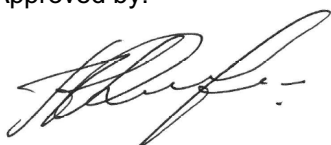


<b>Name:</b>	<b>11-Keto Flunisolide</b>
<b>Lot#:</b>	GR-14-289
<b>Test Date:</b>	06/03/2020 (re-test date: 06/03/2025)
<b>CAS No.:</b>	1997-76-8
<b>MF:</b>	C <sub>24</sub> H <sub>29</sub> FO <sub>6</sub>
<b>MW:</b>	432.48
<b>Appearance:</b>	White Solid
<b>Purity:</b>	96.5% by HPLC
<b><sup>1</sup>H-NMR:</b>	Conforms
<b>MS-ESI (+)</b>	Conforms (shows peaks at m/z = 433.42 [M+H] <sup>+</sup> , 455.35 [M+Na] <sup>+</sup> )
<b>Storage</b>	Store at 0-8°C in a dry place away from direct sunlight

Approved by:

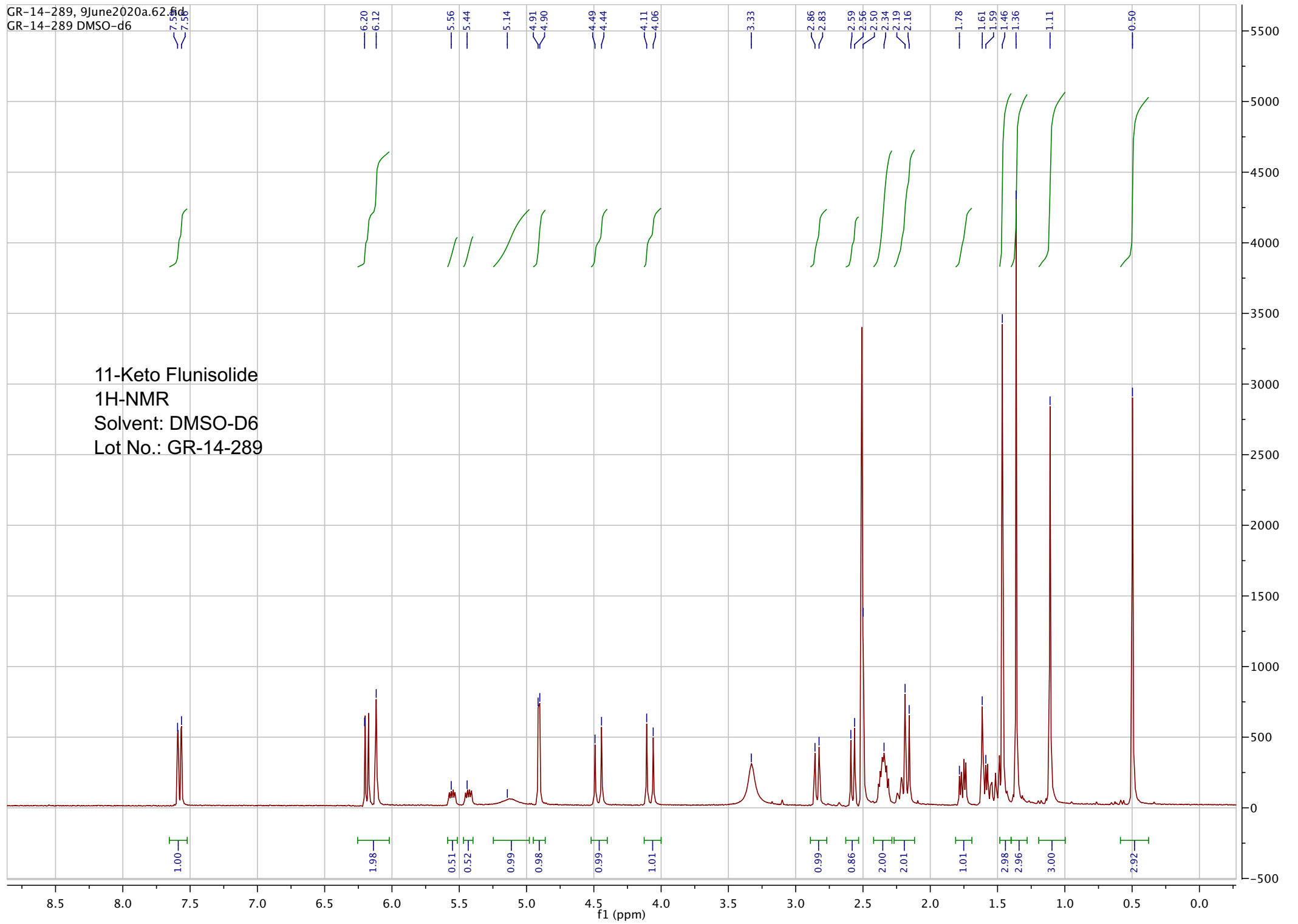
Date: 06/09/2020



Viorica Rusu, QC/QA Manager

GR-14-289, 9June2020a.62.fid  
GR-14-289 DMSO-d6

11-Keto Flunisolide  
1H-NMR  
Solvent: DMSO-D6  
Lot No.: GR-14-289

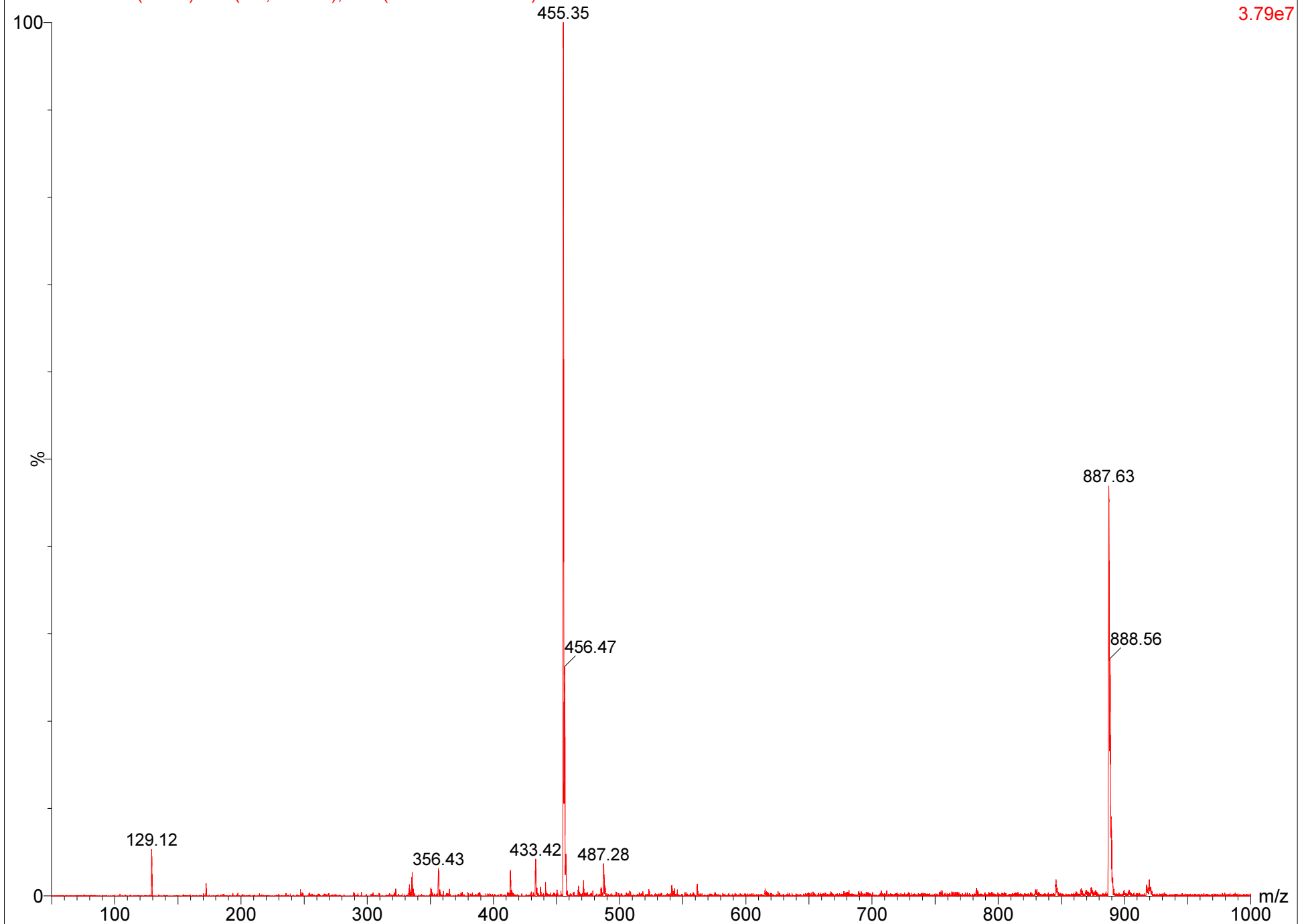


GR-14-289

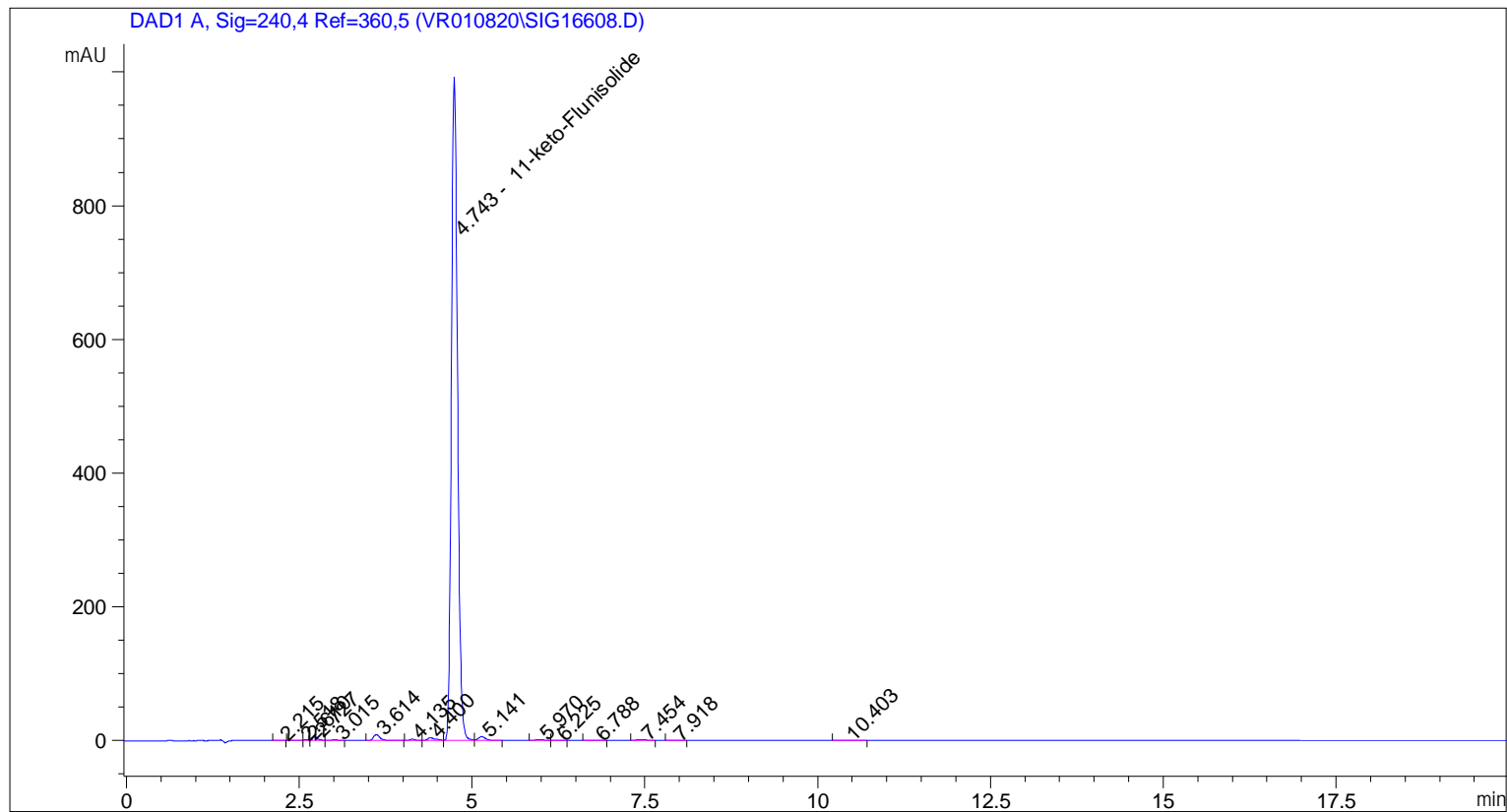
09-Jun-2020 12:46:58

GR-14-289 18 (1.179) Sm (Mn, 3x0.00); Cm (16:25-1:11x1.500)

1: Scan ES+  
3.79e7



=====  
Acq. Operator : vrusu  
Acq. Instrument : Instrument 1 Location : Vial 7  
Injection Date : 6/3/2020 3:36:53 PM Inj Volume : 5.0 µl  
Acq. Method : C:\CHEM32\1\METHODS\VR060320\_289.M  
Last changed : 6/3/2020 3:35:49 PM by vrusu  
Analysis Method : C:\CHEM32\1\METHODS\VR060320\_289PM.M  
Last changed : 6/3/2020 3:55:33 PM by vrusu



=====  
Area Percent Report  
=====

Sorted By : Signal  
Calib. Data Modified : 6/3/2020 3:55:08 PM  
Multiplier: : 1.0000  
Dilution: : 1.0000  
Use Multiplier & Dilution Factor with ISTDs

Signal 1: DAD1 A, Sig=240,4 Ref=360,5

Peak #	RetTime [min]	Type	Width [min]	Area [mAU*s]	Area %	Name
1	2.215	BB	0.0682	2.61067	0.0412	?
2	2.518	BV	0.0936	2.96716	0.0469	?
3	2.610	VV	0.0653	6.29129	0.0993	?
4	2.727	VB	0.0722	29.62609	0.4678	?
5	3.015	BB	0.0889	6.79069	0.1072	?
6	3.614	BB	0.1021	58.81948	0.9288	?
7	4.135	BB	0.0867	10.67686	0.1686	?
8	4.400	BV	0.1113	32.25758	0.5094	?

Sample Name: GR-14-289

Peak #	RetTime [min]	Type	Width [min]	Area [mAU*s]	Area %	Name
9	4.743	VV	0.0957	6113.47607	96.5349	11-keto-Flunisolide
10	5.141	VB	0.1081	41.02095	0.6477	?
11	5.970	BV	0.1461	8.88180	0.1402	?
12	6.225	VB	0.1157	1.94813	0.0308	?
13	6.788	BB	0.1357	1.54209	0.0244	?
14	7.454	BB	0.1367	10.08224	0.1592	?
15	7.918	BB	0.1118	3.15205	0.0498	?
16	10.403	BB	0.1509	2.77405	0.0438	?

Totals : 6332.91721

=====  
\*\*\* End of Report \*\*\*