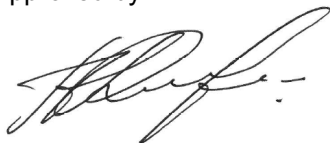


Name:	Hydroxy Bezafibrate-D6
Lot#:	GR-14-273
Test Date:	05/25/2020 (re-test date: 05/25/2025)
CAS No.:	NA
MF:	C ₁₉ H ₁₄ D ₆ ClNO ₅
MW:	383.76
Appearance:	White Solid
Purity:	97.3% by HPLC; 99.1% atom D
¹H-NMR:	Conforms
MS-ESI (-)	Conforms (shows peaks at m/z = 382.40 [M-H] ⁻ ; exhibits the expected isotope pattern for mono-chloro compounds)
Storage	Store at 0-8°C in a dry place away from direct sunlight

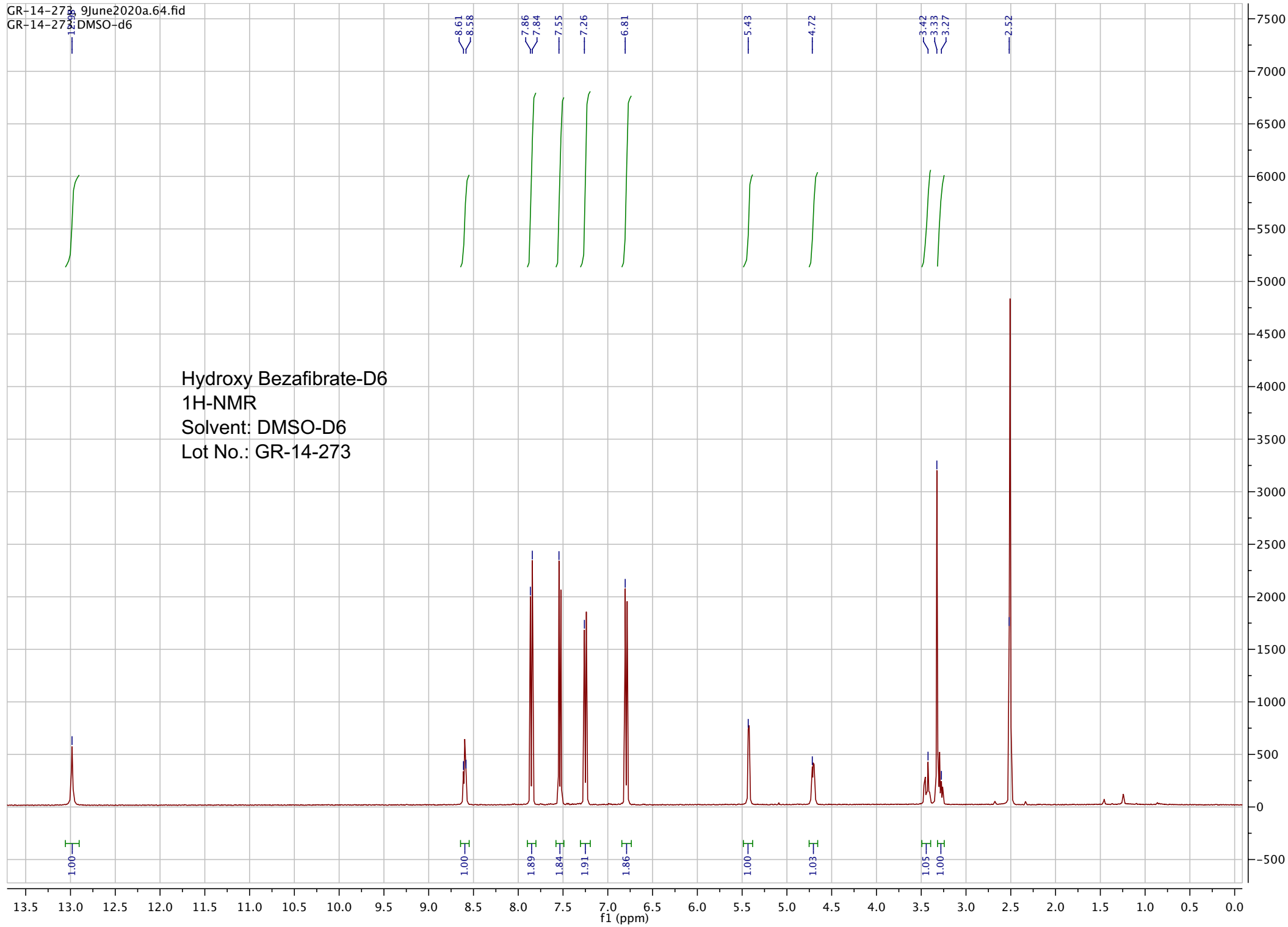
Approved by:

Date: 06/09/2020



Viorica Rusu, QC/QA Manager

Hydroxy Bezafibrate-D6
1H-NMR
Solvent: DMSO-D6
Lot No.: GR-14-273

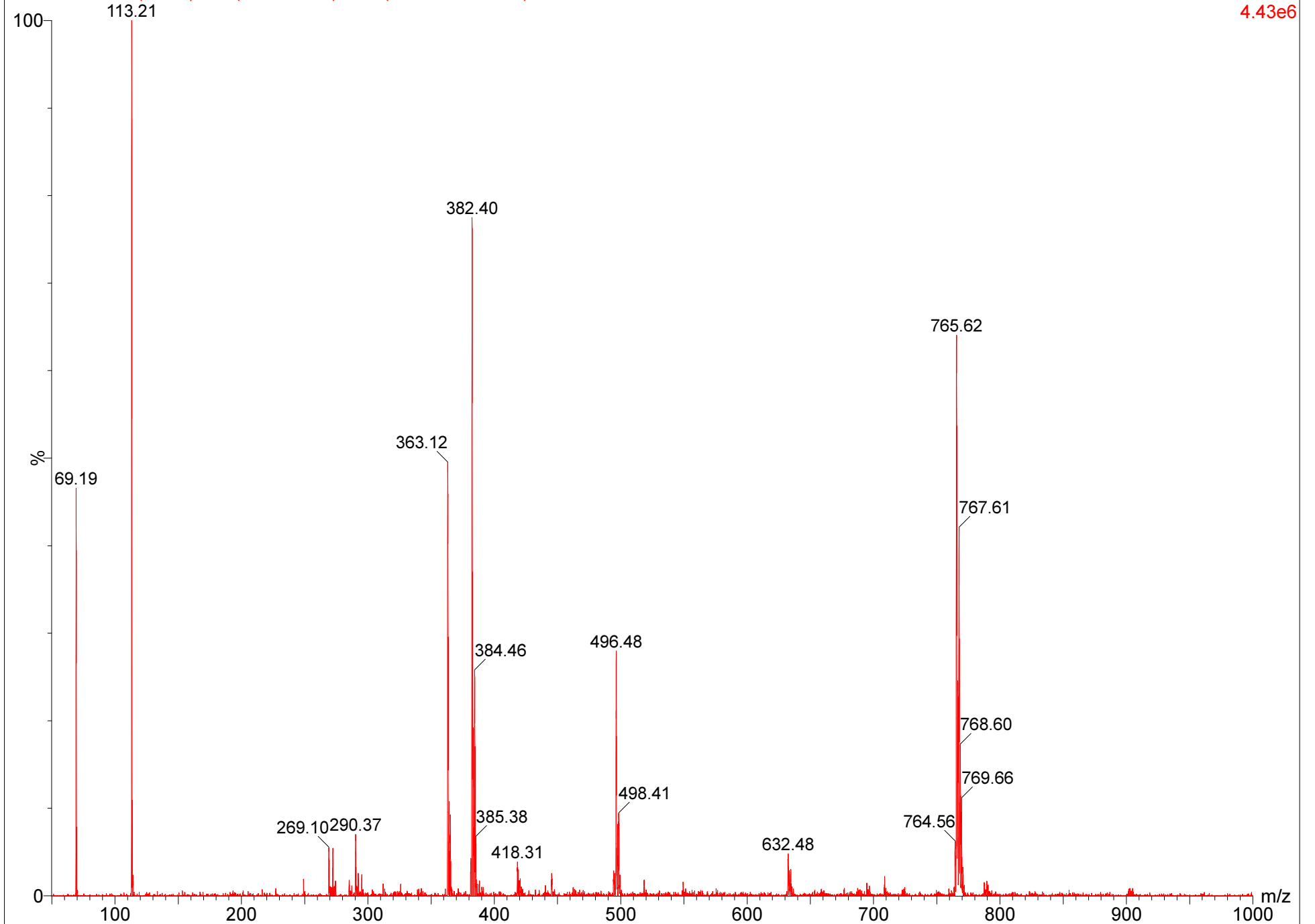


GR-14-273

09-Jun-2020 12:38:45

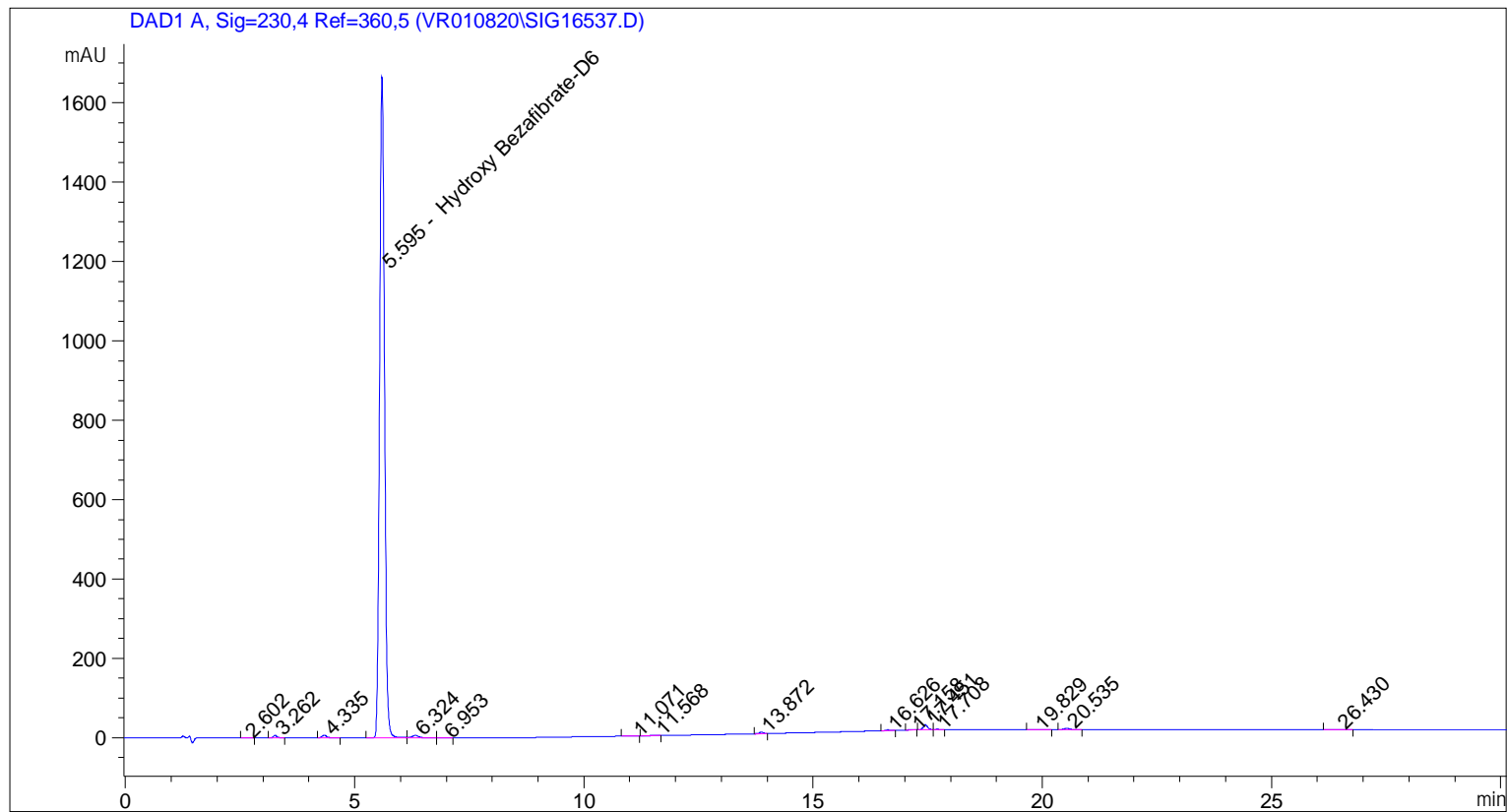
GR-14-273 17 (1.146) Sm (Mn, 3x0.00); Cm (13:21-1:7x1.500)

2: Scan ES-
4.43e6



```

=====
Acq. Operator   : vrusu
Acq. Instrument : Instrument 1                Location : Vial 45
Injection Date  : 5/25/2020 1:07:25 PM
                                           Inj Volume : 10.0 µl
Acq. Method    : C:\CHEM32\1\METHODS\VR052520_273.M
Last changed   : 5/25/2020 1:06:26 PM by vrusu
Analysis Method : C:\CHEM32\1\METHODS\VR052520_273PM.M
Last changed   : 5/25/2020 3:00:05 PM by vrusu
  
```



=====
 Area Percent Report
 =====

```

Sorted By           :      Signal
Calib. Data Modified :      5/25/2020 2:57:36 PM
Multiplier:         :      1.0000
Dilution:           :      1.0000
Use Multiplier & Dilution Factor with ISTDs
  
```

Signal 1: DAD1 A, Sig=230,4 Ref=360,5

Peak #	RetTime [min]	Type	Width [min]	Area [mAU*s]	Area %	Name
1	2.602	BB	0.0905	1.85127	0.0147	?
2	3.262	BB	0.0807	32.62978	0.2588	?
3	4.335	BB	0.1091	44.79427	0.3552	?
4	5.595	BV	0.1138	1.22651e4	97.2620	Hydroxy Bezafibrate-D6
5	6.324	VV	0.1618	62.68365	0.4971	?
6	6.953	VB	0.1533	3.63138	0.0288	?
7	11.071	BB	0.1603	8.28511	0.0657	?
8	11.568	BB	0.1272	6.91860	0.0549	?

Sample Name: GR-14-273

Peak #	RetTime [min]	Type	Width [min]	Area [mAU*s]	Area %	Name
9	13.872	BB	0.0972	23.23286	0.1842	?
10	16.626	BB	0.1068	12.92471	0.1025	?
11	17.158	BB	0.1065	9.03191	0.0716	?
12	17.451	BV	0.1010	81.98708	0.6502	?
13	17.708	VB	0.0954	7.25318	0.0575	?
14	19.829	BB	0.1684	8.03364	0.0637	?
15	20.535	BB	0.1421	29.63494	0.2350	?
16	26.430	BB	0.1934	12.38275	0.0982	?

Totals : 1.26104e4

=====
*** End of Report ***