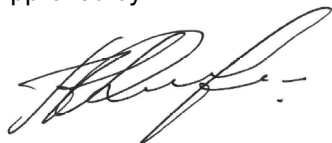


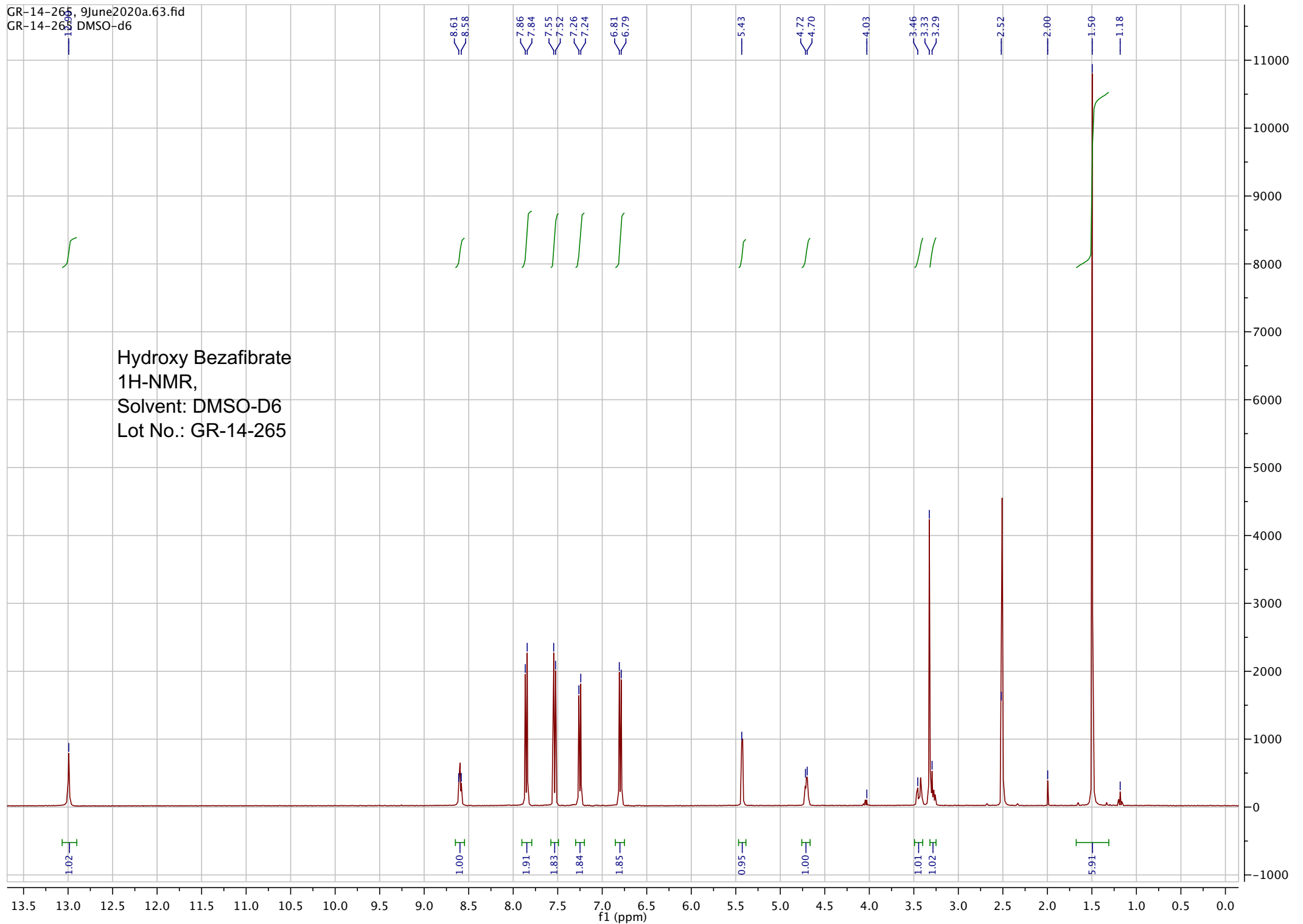
Name:	Hydroxy Bezafibrate
Lot#:	GR-14-265
Test Date:	05/25/2020 (re-test date: 05/25/2025)
CAS No.:	NA
MF:	C ₁₉ H ₂₀ ClNO ₅
MW:	377.82
Appearance:	White Solid
Purity:	97.4% by HPLC
¹H-NMR:	Conforms (shows a trace of EtOAc)
MS-ESI (-)	Conforms (shows peaks at m/z = 376.44 [M-H] ⁻ ; exhibits the expected isotope pattern for mono-chloro compounds)
Storage	Store at 0-8°C in a dry place away from direct sunlight

Approved by:

Date: 06/09/2020



Viorica Rusu, QC/QA Manager

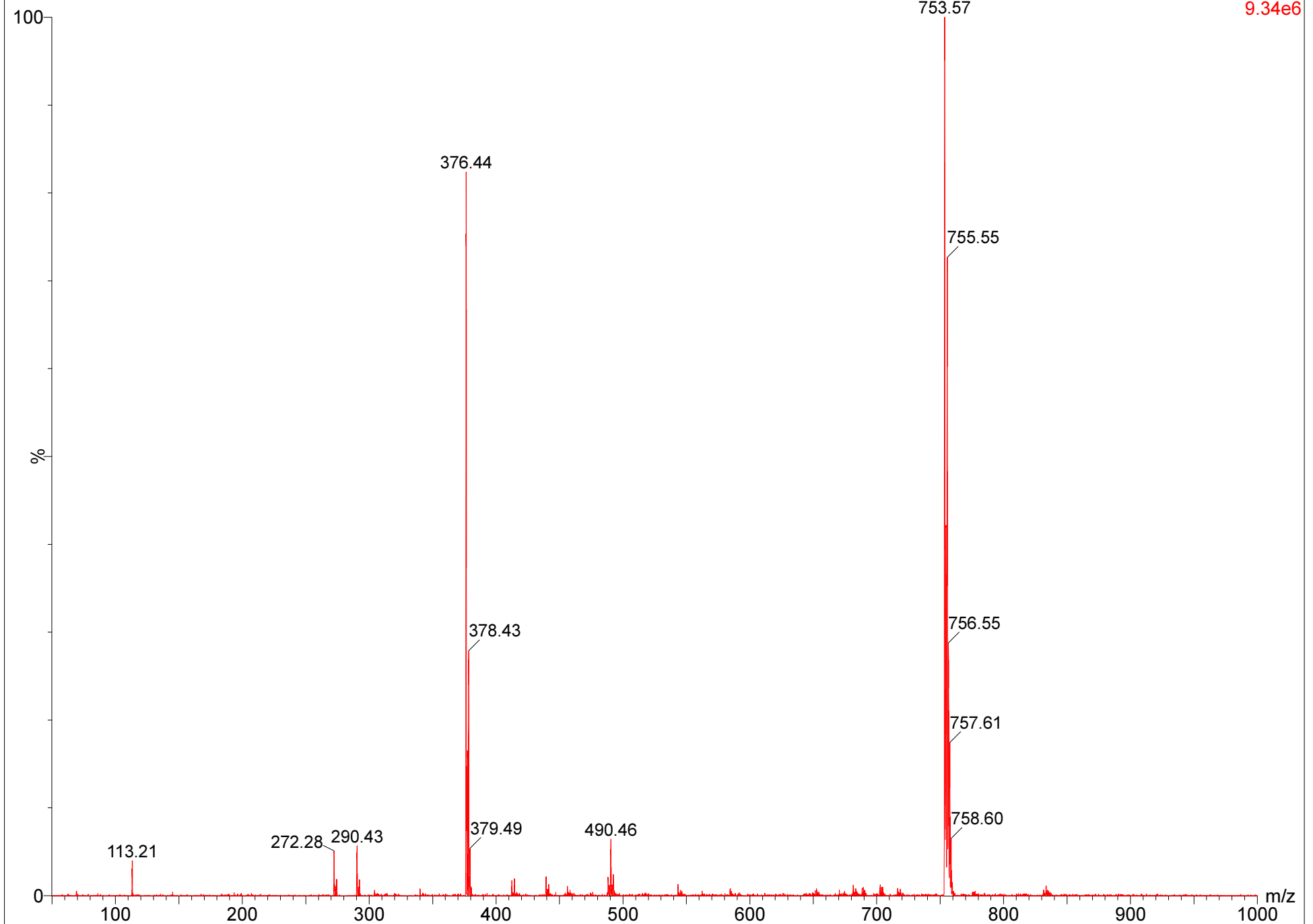


GR-14-265

09-Jun-2020 12:34:38

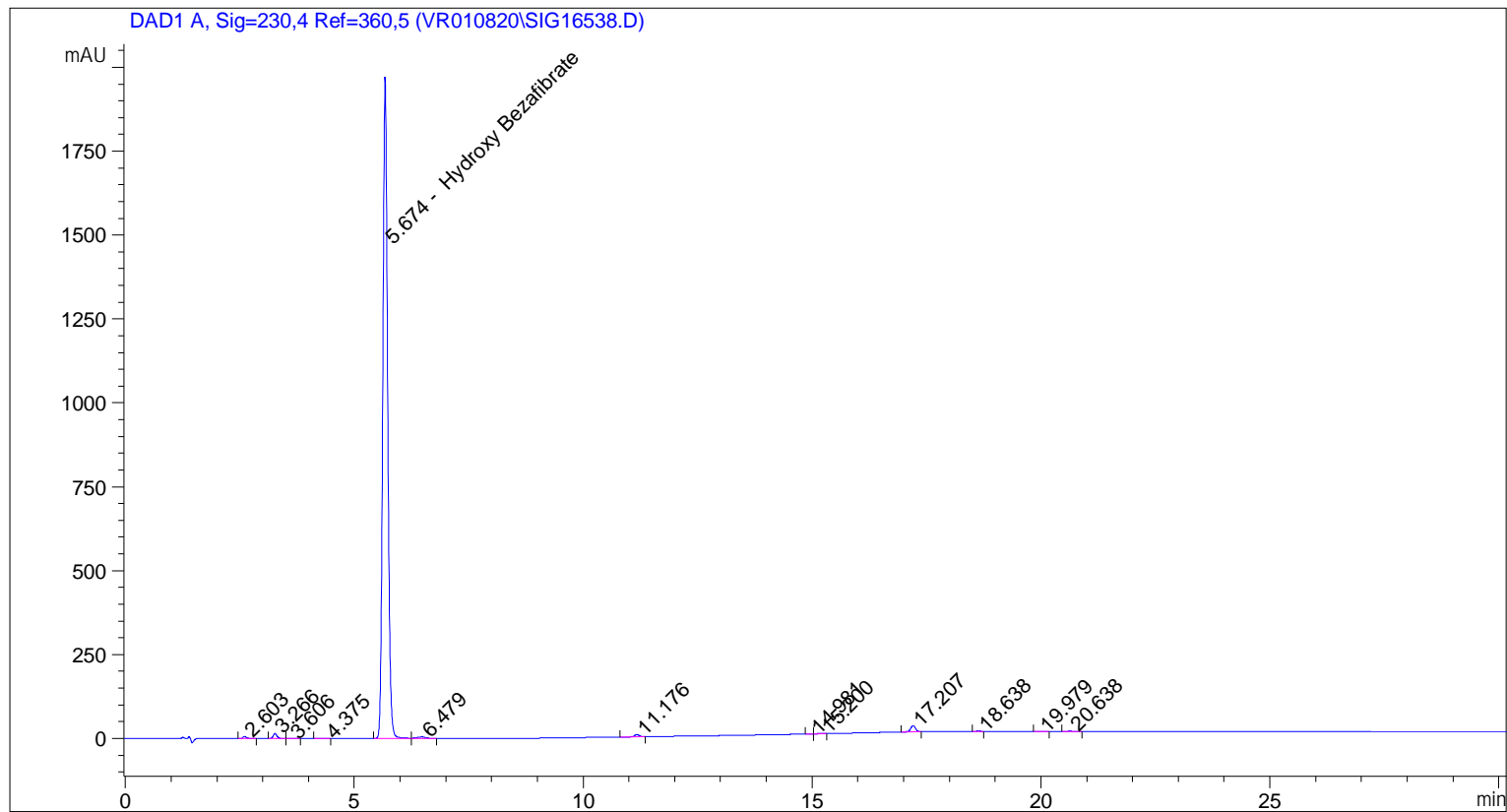
GR-14-265 16 (1.078) Sm (Mn, 3x0.00); Cm (13:19-1:8x1.500)

2: Scan ES-
9.34e6



```

=====
Acq. Operator   : vrusu
Acq. Instrument : Instrument 1                Location : Vial 46
Injection Date  : 5/25/2020 1:47:09 PM
                                           Inj Volume : 10.0 µl
Acq. Method     : C:\CHEM32\1\METHODS\VR052520_265.M
Last changed    : 5/25/2020 1:42:53 PM by vrusu
Analysis Method : C:\CHEM32\1\METHODS\VR052520_265PM.M
Last changed    : 5/25/2020 2:54:49 PM by vrusu
  
```



=====
 Area Percent Report
 =====

```

Sorted By           :      Signal
Calib. Data Modified :      5/25/2020 2:54:18 PM
Multiplier:         :      1.0000
Dilution:           :      1.0000
Use Multiplier & Dilution Factor with ISTDs
  
```

Signal 1: DAD1 A, Sig=230,4 Ref=360,5

Peak #	RetTime [min]	Type	Width [min]	Area [mAU*s]	Area %	Name
1	2.603	BB	0.0741	30.56717	0.2009	?
2	3.266	VB	0.0834	80.83593	0.5314	?
3	3.606	BB	0.1138	2.56858	0.0169	?
4	4.375	BB	0.1585	2.91710	0.0192	?
5	5.674	BV	0.1177	1.48228e4	97.4334	Hydroxy Bezafibrate
6	6.479	VB	0.1740	55.77841	0.3666	?
7	11.176	BB	0.1214	51.88728	0.3411	?
8	14.981	BV	0.0903	1.85484	0.0122	?

Sample Name: GR-14-265

Peak #	RetTime [min]	Type	Width [min]	Area [mAU*s]	Area %	Name
9	15.200	VB	0.0976	11.15240	0.0733	?
10	17.207	BB	0.1087	127.34842	0.8371	?
11	18.638	BB	0.0981	6.63777	0.0436	?
12	19.979	BB	0.1355	6.82650	0.0449	?
13	20.638	BB	0.1343	12.08616	0.0794	?

Totals : 1.52132e4

=====
*** End of Report ***