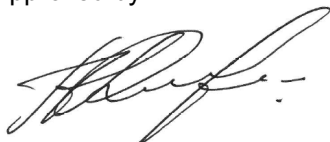


Name:	Flunisolide-17-Carboxylic Acid
Lot#:	GR-14-293
Test Date:	06/05/2020 (re-test date: 06/05/2025)
CAS No.:	75575-02-9
MF:	C ₂₃ H ₂₉ FO ₆
MW:	420.47
Appearance:	White Solid
Purity:	98.2% by HPLC
¹H-NMR:	Conforms
MS-ESI (-)	Conforms (shows peak at m/z = 419.19 [M-H] ⁻)
Storage	Store at 0-8°C in a dry place away from direct sunlight

Approved by:

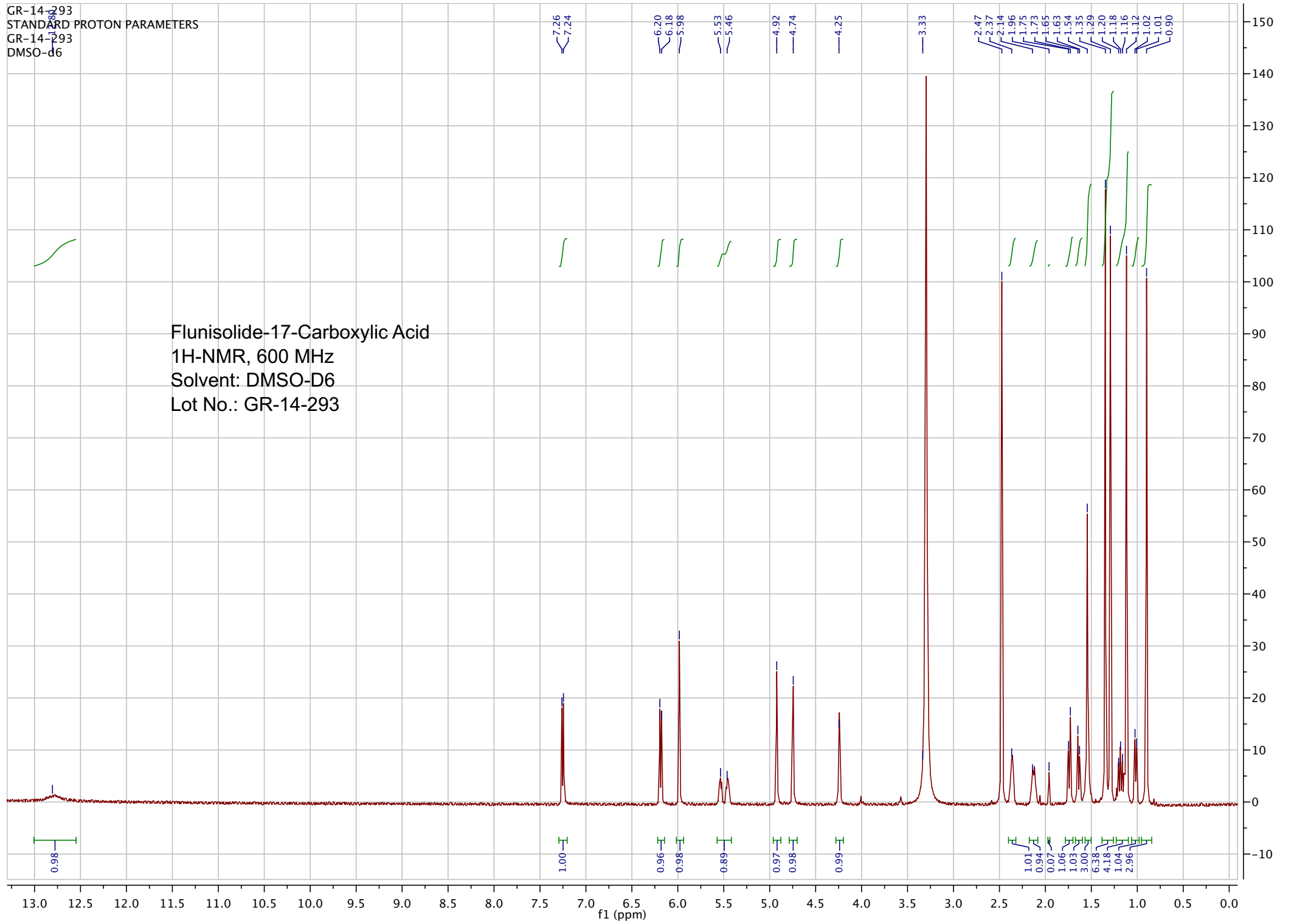
Date: 07/22/2020



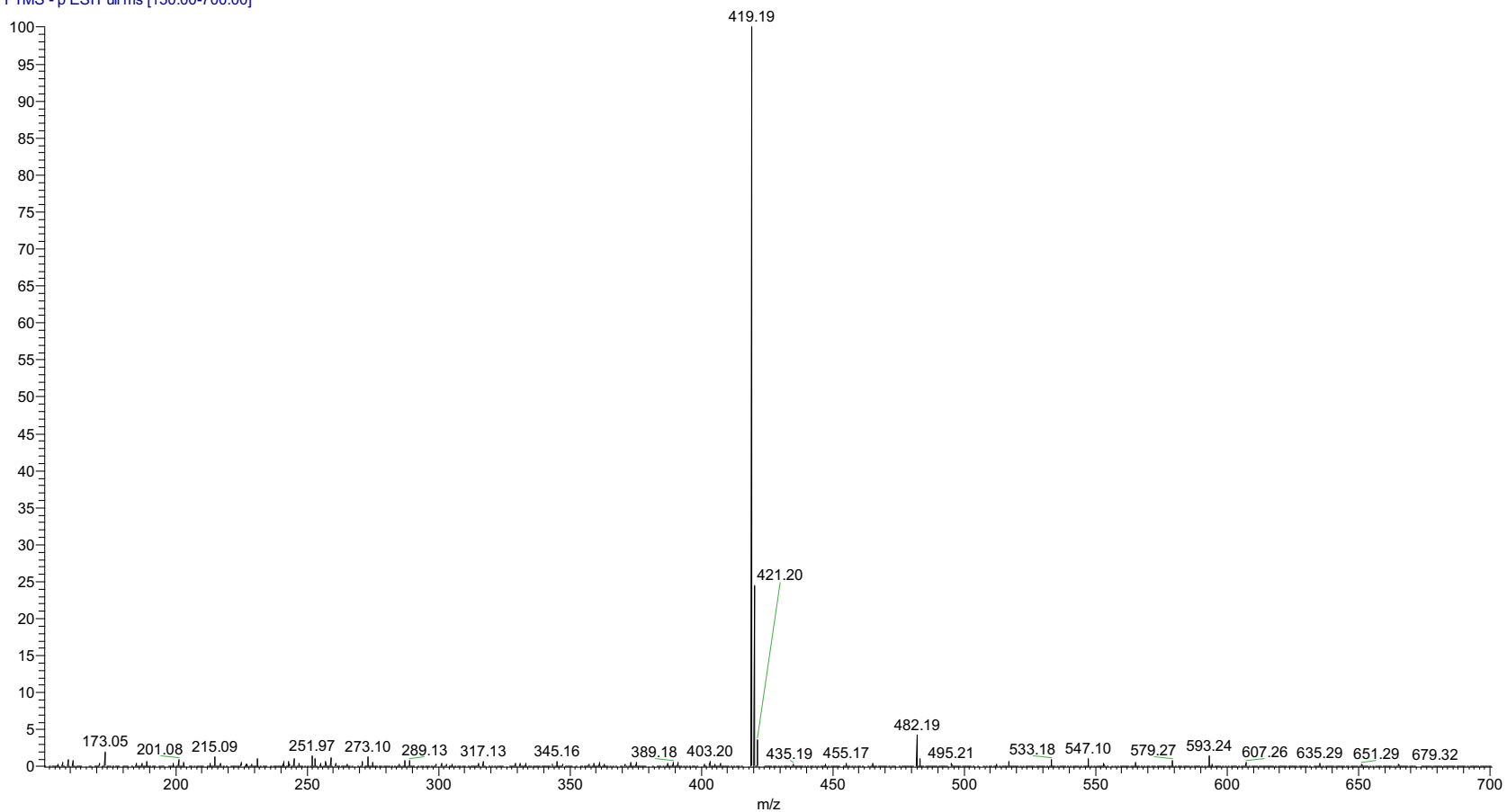
Viorica Rusu, QC/QA Manager

GR-14-293
STANDARD PROTON PARAMETERS
GR-14-293
DMSO-d6

Flunisolide-17-Carboxylic Acid
1H-NMR, 600 MHz
Solvent: DMSO-D6
Lot No.: GR-14-293



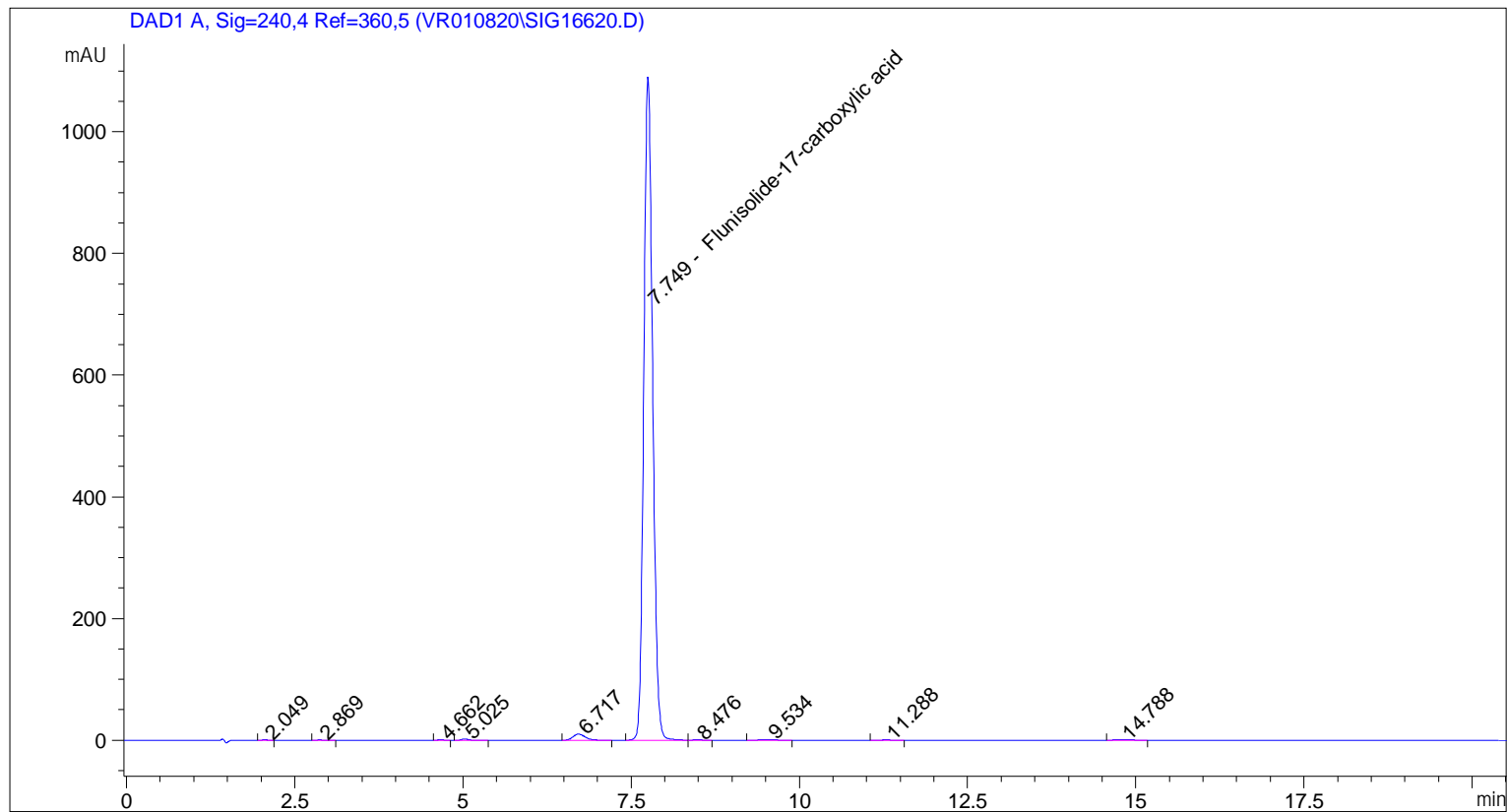
pp_2020_015_GR14293_neg_001 #775-777 RT: 2.61-2.63 AV: 3 N :7
T: FTMS - p ESI Full ms [150.00-700.00]



ESI-MS spectrum for sample GR-14-293. Shows monoisotopic [M-H]- mass.

```

=====
Acq. Operator   : vrusu
Acq. Instrument : Instrument 1                Location : Vial 14
Injection Date  : 6/5/2020 7:59:17 AM
                                           Inj Volume : 7.0 µl
Acq. Method     : C:\CHEM32\1\METHODS\VR060520_293.M
Last changed    : 6/5/2020 7:58:12 AM by vrusu
Analysis Method : C:\CHEM32\1\METHODS\VR060520_293PM.M
Last changed    : 6/5/2020 8:29:34 AM by vrusu
  
```



=====
 Area Percent Report
 =====

```

Sorted By           :      Signal
Calib. Data Modified :      6/5/2020 8:29:07 AM
Multiplier:         :      1.0000
Dilution:           :      1.0000
Use Multiplier & Dilution Factor with ISTDs
  
```

Signal 1: DAD1 A, Sig=240,4 Ref=360,5

Peak #	RetTime [min]	Type	Width [min]	Area [mAU*s]	Area %	Name
1	2.049	BB	0.0716	3.37744	0.0333	?
2	2.869	BB	0.0886	2.68278	0.0265	?
3	4.662	VB	0.0977	3.34957	0.0331	?
4	5.025	BB	0.1067	14.27182	0.1409	?
5	6.717	BB	0.1927	125.16651	1.2356	?
6	7.749	BV	0.1405	9948.55957	98.2097	Flunisolide-17-carboxylic acid
7	8.476	VB	0.1585	4.60981	0.0455	?
8	9.534	BB	0.1967	17.13371	0.1691	?

Sample Name: GR-14-293

Peak #	RetTime [min]	Type	Width [min]	Area [mAU*s]	Area %	Name
9	11.288	BB	0.1712	3.68262	0.0364	?
10	14.788	BB	0.1884	7.07645	0.0699	?

Totals : 1.01299e4

=====
*** End of Report ***