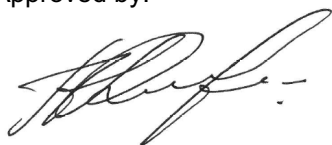


Name:	Flunisolide Acetate
Lot#:	GR-14-281
Test Date:	06/03/2020 (re-test date: 06/03/2025)
CAS No.:	4533-89-5
MF:	C ₂₆ H ₃₃ FO ₇
MW:	476.53
Appearance:	White Solid
Purity:	99.5% by HPLC
¹H-NMR:	Conforms (shows a trace of DMF)
MS-ESI (+)	Conforms (shows peak at m/z = 477.23 [M+H] ⁺)
Storage	Store at 0-8°C in a dry place away from direct sunlight

Approved by:

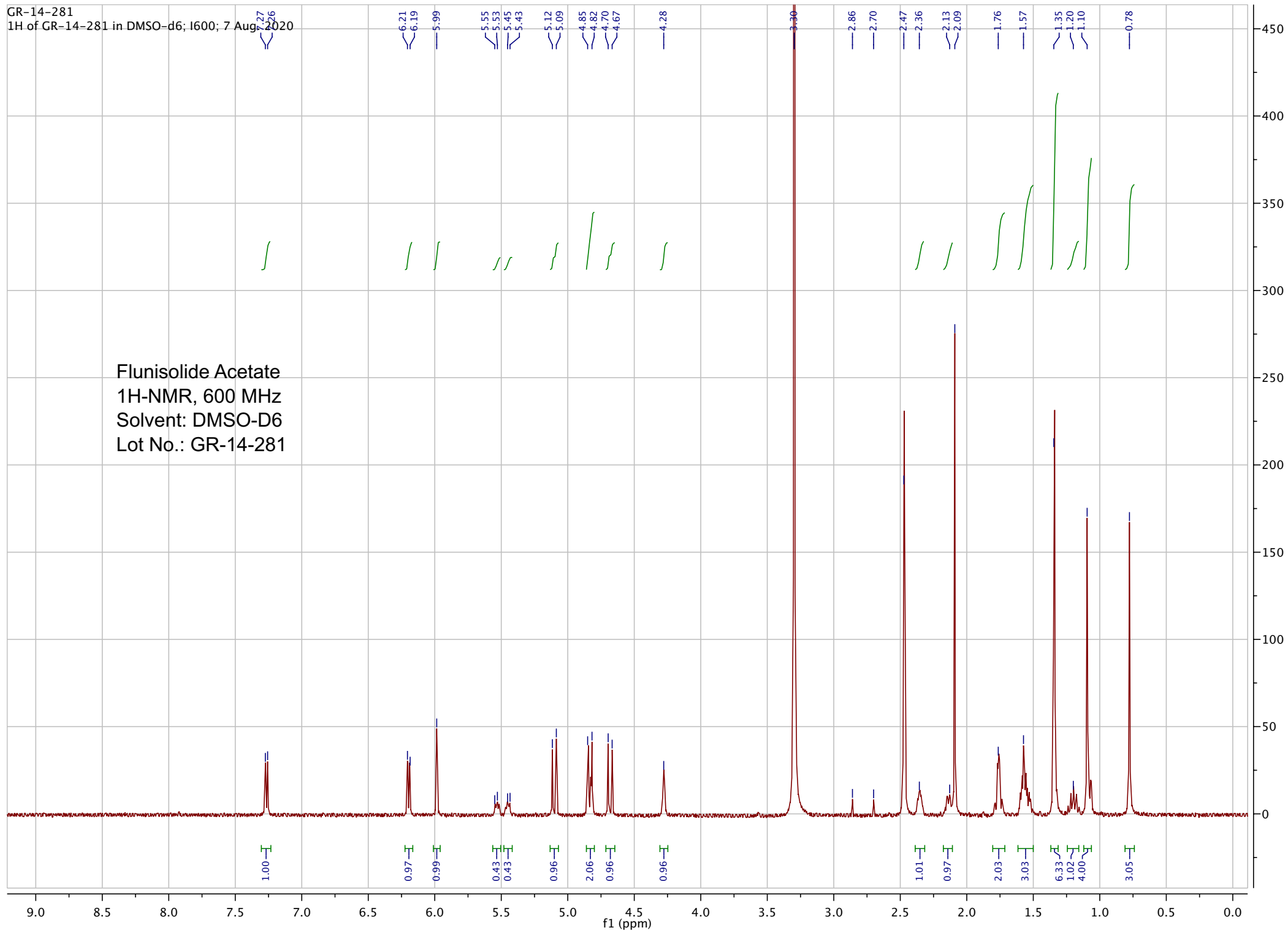
Date: 08/11/2020



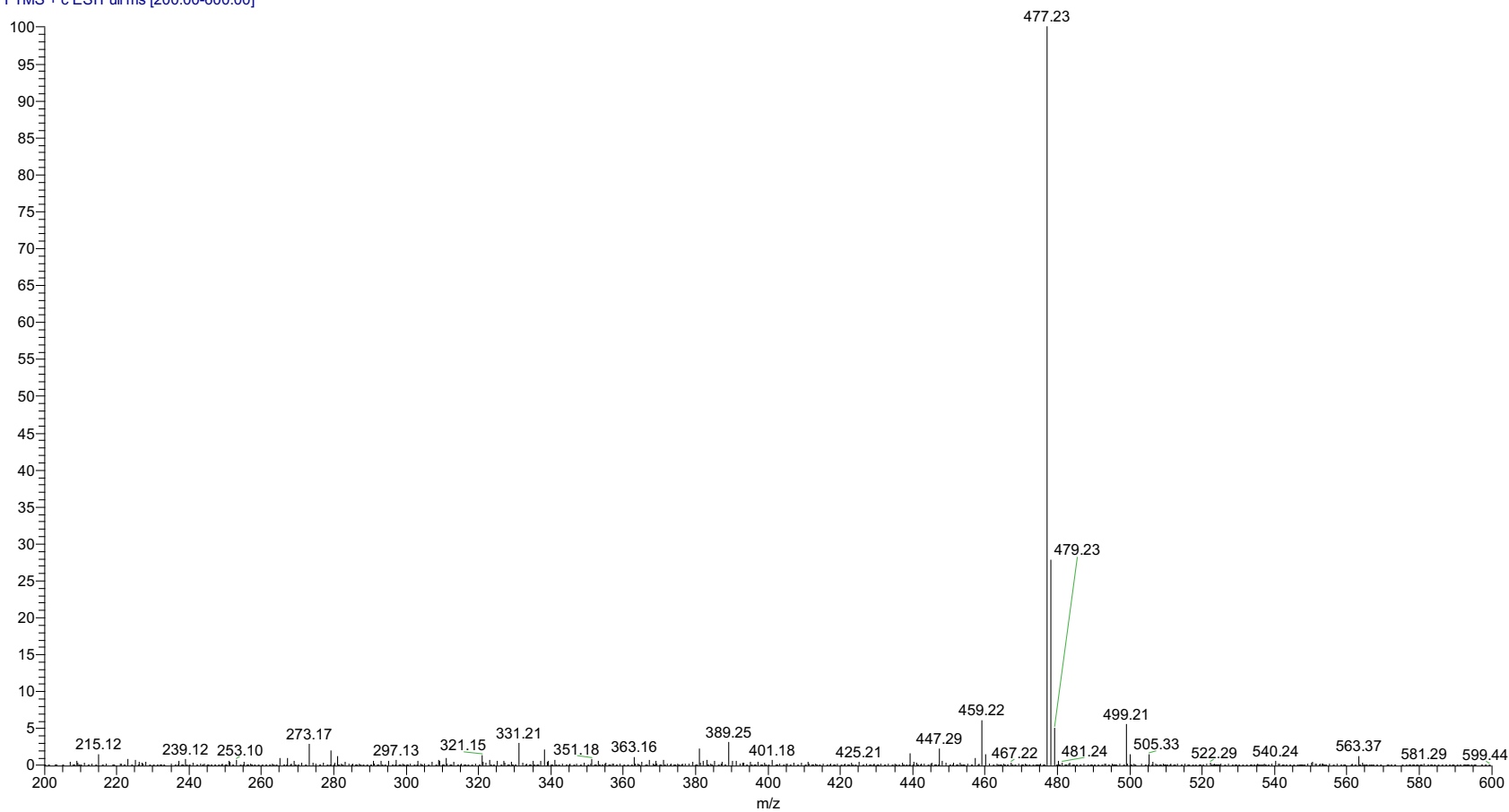
Viorica Rusu, QC/QA Manager

GR-14-281
1H of GR-14-281 in DMSO-d6; 1600; 7 Aug. 2020

Flunisolide Acetate
1H-NMR, 600 MHz
Solvent: DMSO-D6
Lot No.: GR-14-281



pp_2020_018_GR_14_281_001 #431 RT: 1.74 AV: 1 NL: 4.46E7
T: FTMS + c ESI Full ms [200.00-600.00]

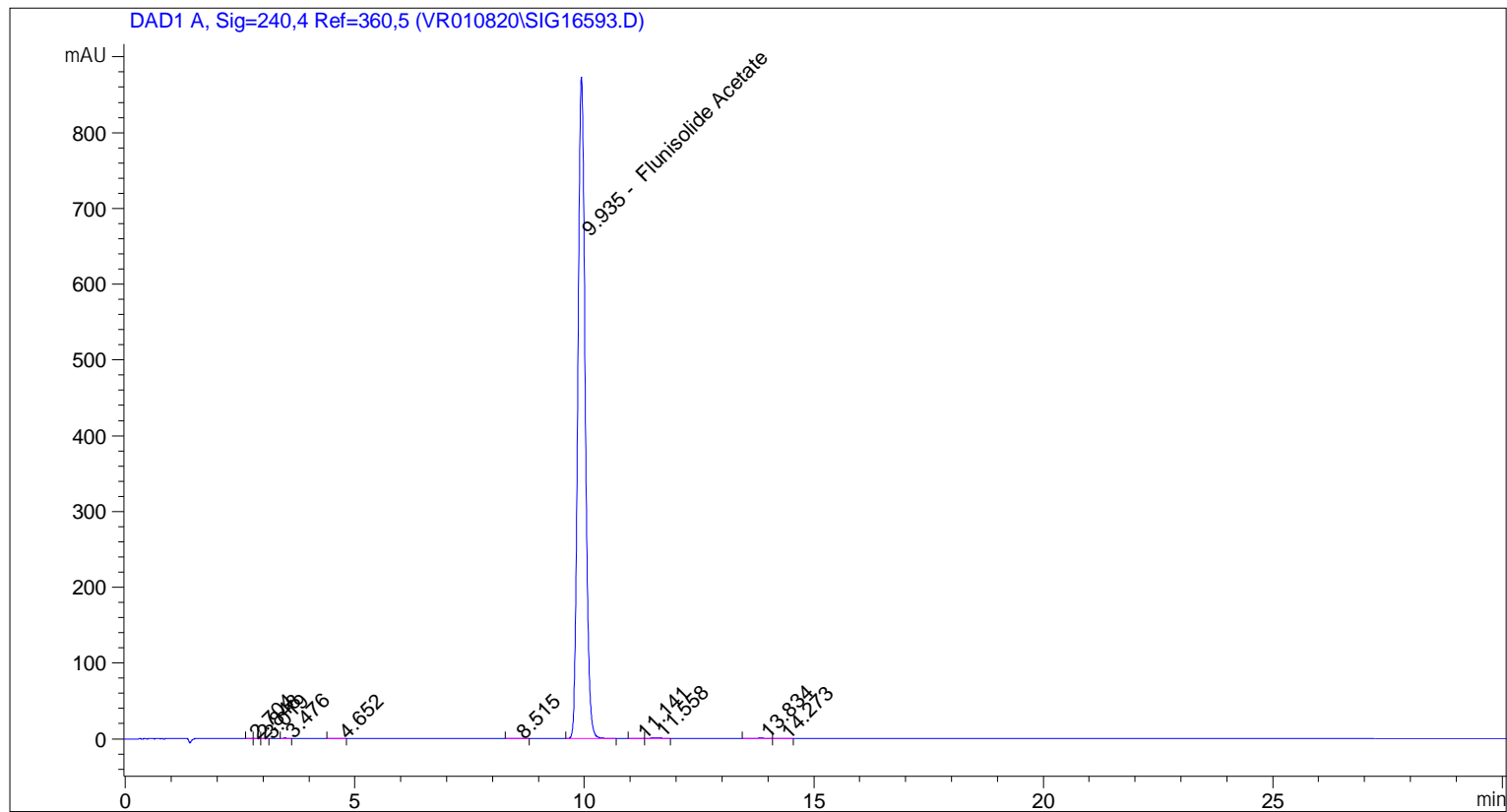


ESI-MS spectrum for sample GR-14-281. Shows monoisotopic [M+H]⁺ mass.

```

=====
Acq. Operator   : vrusu
Acq. Instrument : Instrument 1                Location : Vial 1
Injection Date  : 6/3/2020 8:02:32 AM
                                           Inj Volume : 10.0 µl

Acq. Method    : C:\CHEM32\1\METHODS\VR060320_281.M
Last changed   : 6/3/2020 8:01:16 AM by vrusu
Analysis Method: C:\CHEM32\1\METHODS\VR060320_281PM.M
Last changed   : 6/3/2020 9:13:21 AM by vrusu
  
```



Area Percent Report

```

Sorted By           : Signal
Calib. Data Modified : 6/3/2020 9:12:56 AM
Multiplier:         : 1.0000
Dilution:           : 1.0000
Use Multiplier & Dilution Factor with ISTDs
  
```

Signal 1: DAD1 A, Sig=240,4 Ref=360,5

Peak #	RetTime [min]	Type	Width [min]	Area [mAU*s]	Area %	Name
1	2.704	BV	0.0807	1.88742	0.0194	?
2	2.848	VV	0.0726	2.65454	0.0273	?
3	3.019	VB	0.0715	3.00641	0.0310	?
4	3.476	BB	0.0791	4.08351	0.0420	?
5	4.652	BB	0.1074	4.56243	0.0470	?
6	8.515	BB	0.1875	5.53967	0.0570	?
7	9.935	BV	0.1711	9660.81934	99.4661	Flunisolide Acetate
8	11.141	BV	0.1423	3.51035	0.0361	?

Sample Name: GR-14-281

Peak #	RetTime [min]	Type	Width [min]	Area [mAU*s]	Area %	Name
9	11.558	VB	0.1876	15.54235	0.1600	?
10	13.834	BV	0.2405	8.40756	0.0866	?
11	14.273	VB	0.1805	2.66650	0.0275	?

Totals : 9712.68008

=====
*** End of Report ***