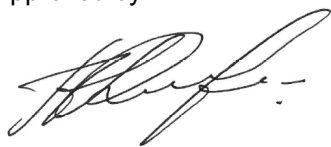


<b>Name:</b>	<b>cis-4-Amino-N-(1-carbethoxy-3-methoxy-4-piperidinyl)-5-chloro-2-methoxybenzamide</b> (Cisapride Benzamide Carbethoxy; CQ RC 3)
<b>Lot#:</b>	GR-15-095
<b>Test Date:</b>	09/10/2020 (re-test date: 09/10/2025)
<b>CAS No.:</b>	351003-35-5
<b>MF:</b>	C <sub>17</sub> H <sub>24</sub> ClN <sub>3</sub> O <sub>5</sub>
<b>MW:</b>	385.84
<b>Appearance:</b>	White solid
<b>Purity:</b>	99.0% by HPLC (average of two sample preparations)
<b><sup>1</sup>H-NMR:</b>	Conforms (shows a trace of ACN)
<b>MS-ESI (+)</b>	Conforms (shows peaks at m/z = 386.15 and 388.15 [M+H] <sup>+</sup> ; exhibits the expected isotope pattern for mono-chloro compounds)
<b>Storage</b>	Long term store at 0 - 5° C in a dry place away from direct sunlight

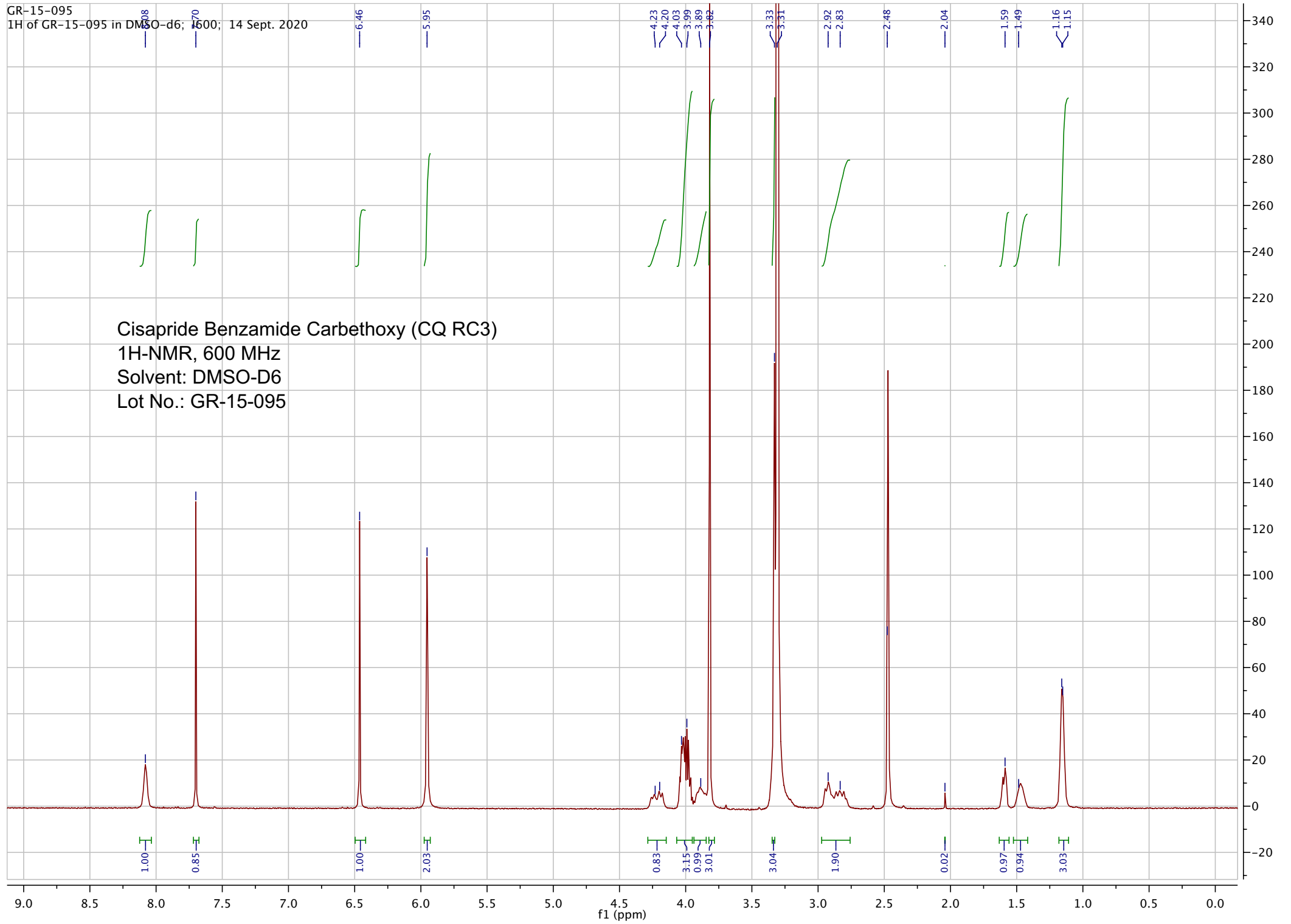
Approved by:

Date: 09/15/2020

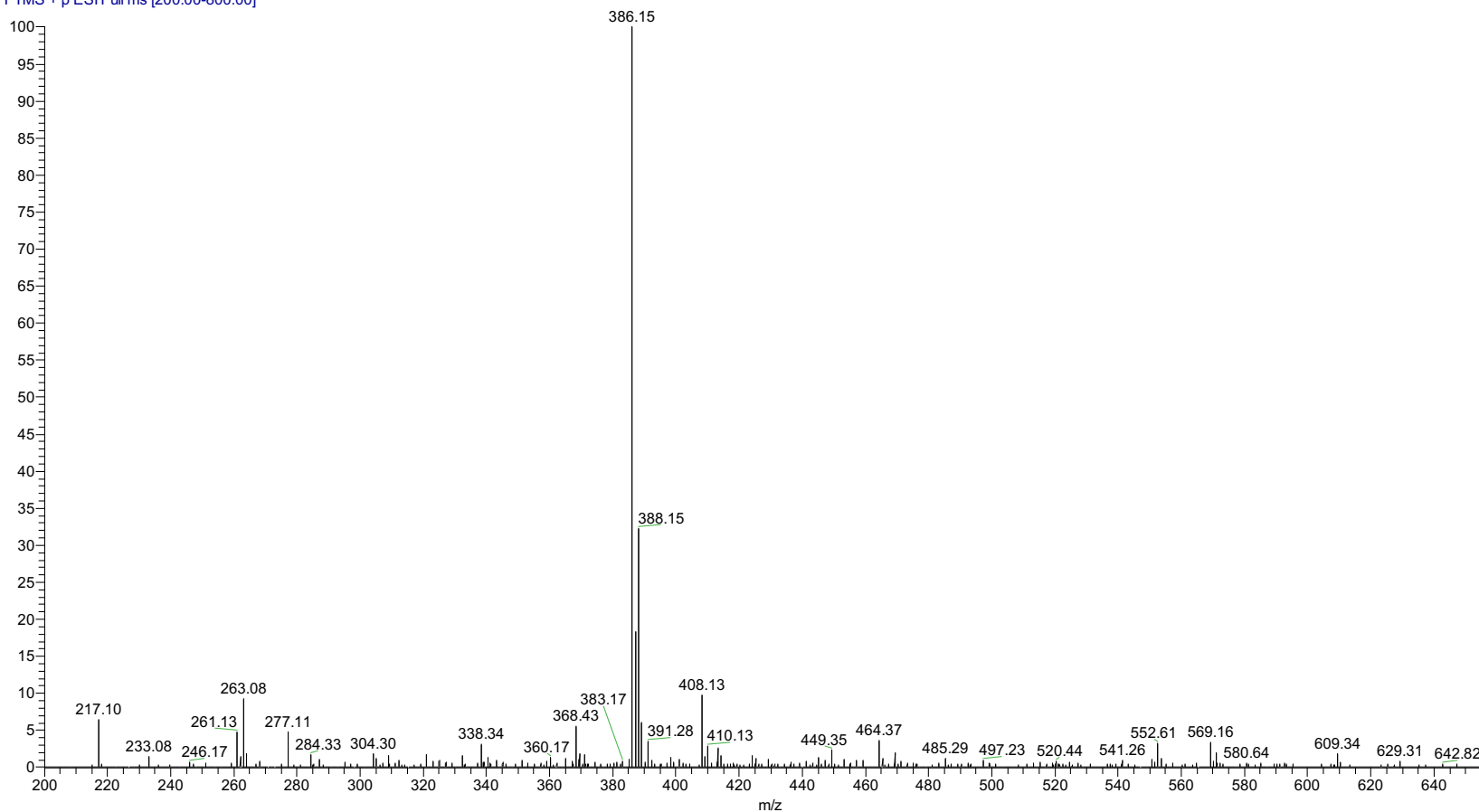


Viorica Rusu, QC/QA Manager

GR-15-095  
1H of GR-15-095 in DMSO-d6; 1600; 14 Sept. 2020



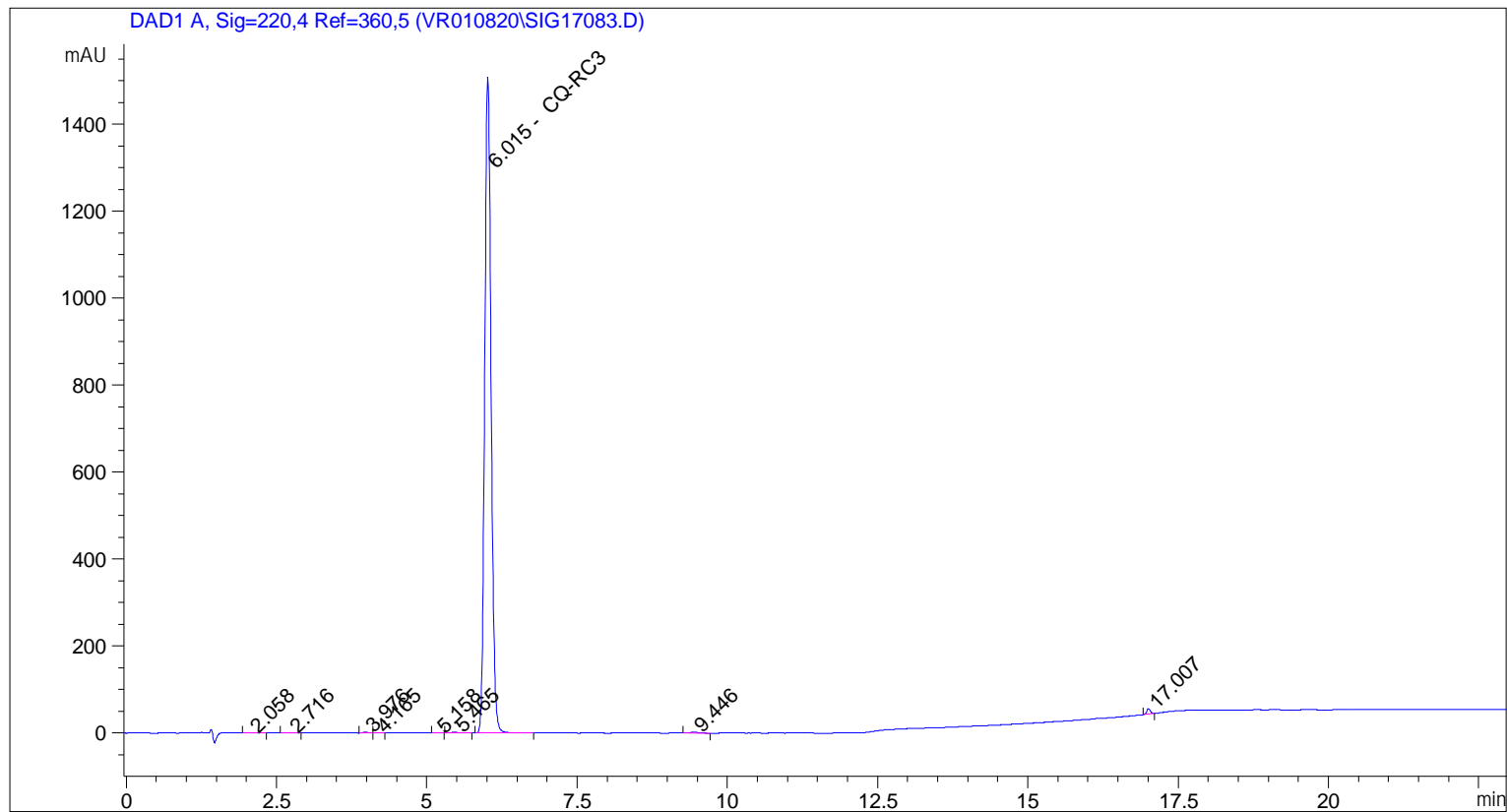
pp\_2020\_024\_GR\_15\_095\_001#1046 RT: 3.26 AV: 1 NL: 1.50E5  
T: FTMS + p ESIFull ms [200.00-800.00]



ESI-MS spectrum for sample GR-15-095. Shows monoisotopic  $[M+H]^+$  mass.

```

=====
Acq. Operator   : vrusu
Acq. Instrument : Instrument 1                Location : Vial 91
Injection Date  : 9/10/2020 1:32:14 PM
                                           Inj Volume : 5.0 µl
Acq. Method     : C:\CHEM32\1\METHODS\VR_091020_095.M
Last changed    : 9/10/2020 1:27:22 PM by vrusu
Analysis Method : C:\CHEM32\1\METHODS\VR091020_095PM.M
Last changed    : 9/10/2020 2:01:14 PM by vrusu
  
```



=====  
 Area Percent Report  
 =====

```

Sorted By      :      Signal
Calib. Data Modified :      9/10/2020 2:00:51 PM
Multiplier:    :      1.0000
Dilution:      :      1.0000
Use Multiplier & Dilution Factor with ISTDs
  
```

Signal 1: DAD1 A, Sig=220,4 Ref=360,5

Peak #	RetTime [min]	Type	Width [min]	Area [mAU*s]	Area %	Name
1	2.058	BB	0.1074	8.24203	0.0727	?
2	2.716	BB	0.1198	3.18108	0.0281	?
3	3.976	BV	0.0873	13.33597	0.1176	?
4	4.165	VB	0.0940	2.32486	0.0205	?
5	5.158	BB	0.0880	3.28112	0.0289	?
6	5.465	BB	0.1105	15.86576	0.1399	?
7	6.015	BB	0.1147	1.12201e4	98.9642	CQ-RC3
8	9.446	BB	0.1767	19.31019	0.1703	?

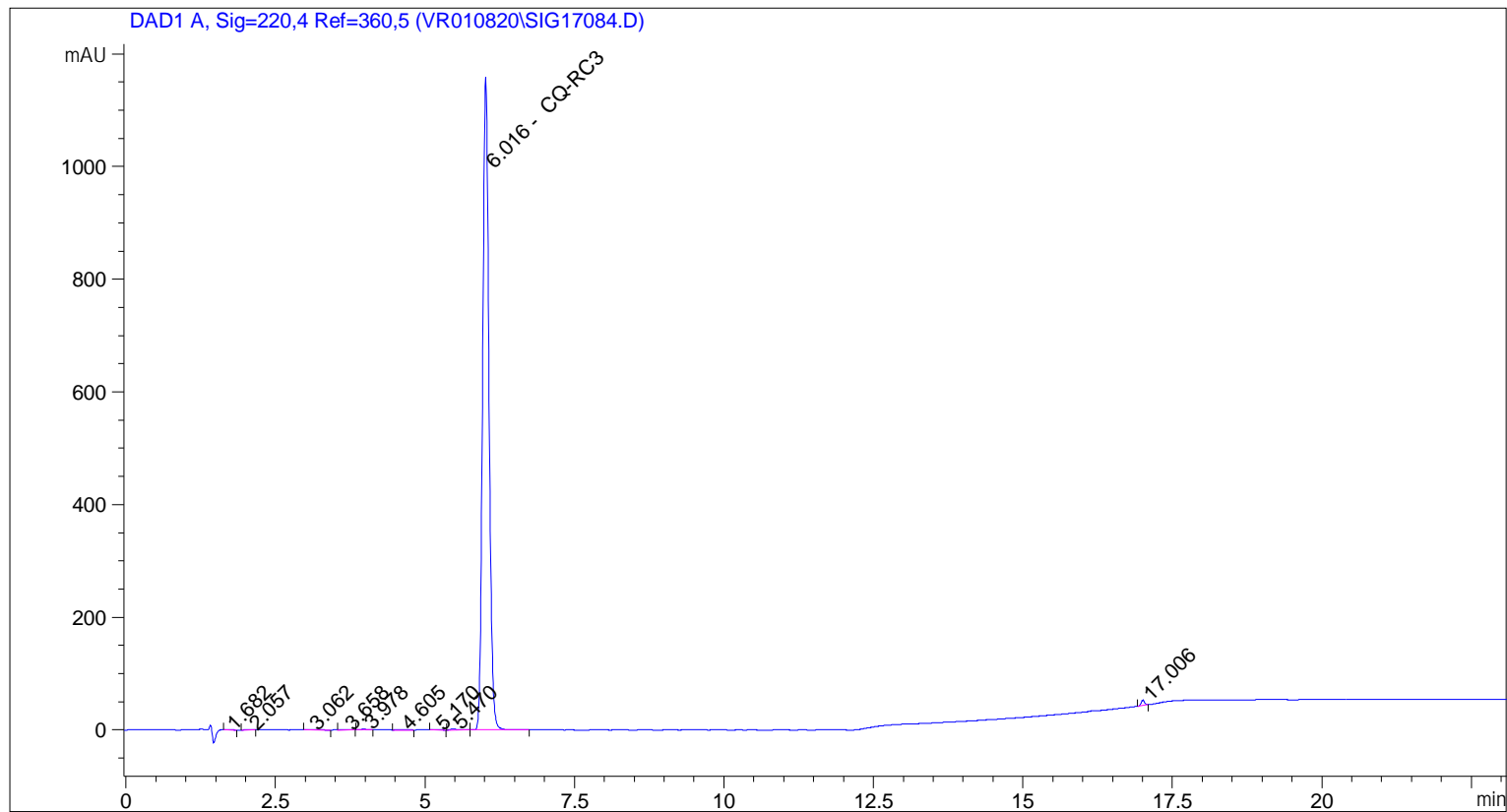
Sample Name: GR-15-095

Peak #	RetTime [min]	Type	Width [min]	Area [mAU*s]	Area %	Name
9	17.007	BB	0.0636	51.88874	0.4577	?

Totals : 1.13376e4

=====  
\*\*\* End of Report \*\*\*

=====  
Acq. Operator : vrusu  
Acq. Instrument : Instrument 1 Location : Vial 92  
Injection Date : 9/10/2020 2:02:48 PM Inj Volume : 5.0 µl  
Acq. Method : C:\CHEM32\1\METHODS\VR\_091020\_095.M  
Last changed : 9/10/2020 2:02:01 PM by vrusu  
Analysis Method : C:\CHEM32\1\METHODS\VR091020\_095PM.M  
Last changed : 9/10/2020 2:01:14 PM by vrusu



=====  
Area Percent Report  
=====

Sorted By : Signal  
Calib. Data Modified : 9/10/2020 2:00:51 PM  
Multiplier: : 1.0000  
Dilution: : 1.0000  
Use Multiplier & Dilution Factor with ISTDs

Signal 1: DAD1 A, Sig=220,4 Ref=360,5

Peak #	RetTime [min]	Type	Width [min]	Area [mAU*s]	Area %	Name
1	1.682	BB	0.0902	2.44522	0.0284	?
2	2.057	BB	0.0731	4.47532	0.0519	?
3	3.062	BB	0.1341	5.51987	0.0640	?
4	3.658	VB	0.1417	2.86864	0.0333	?
5	3.978	BV	0.0816	9.38575	0.1088	?
6	4.605	BB	0.1553	5.08482	0.0590	?
7	5.170	BB	0.1108	3.56445	0.0413	?
8	5.470	BB	0.1132	15.12952	0.1754	?

Sample Name: GR-15-095

Peak #	RetTime [min]	Type	Width [min]	Area [mAU*s]	Area %	Name
9	6.016	BB	0.1139	8537.87109	99.0021	CQ-RC3
10	17.006	BB	0.0628	37.58120	0.4358	?

Totals : 8623.92587

=====  
\*\*\* End of Report \*\*\*