

Name: 6,7-Dehydro Ethynyl Estradiol
Lot#: GR-15-115
Test Date: 09/23/2020 (re-test date: 09/23/2025)
CAS No.: 67703-68-8
MF: C₂₀H₂₂O₂
MW: 294.40
Appearance: Off-white solid
Purity: 97.9% by HPLC (average of two sample preparations)
¹H-NMR: Conforms
MS-ESI (+) Conforms (shows peak at m/z = 295.17 [M+H]⁺)
Storage Long term store at 0 - 5° C in a dry place away from direct sunlight

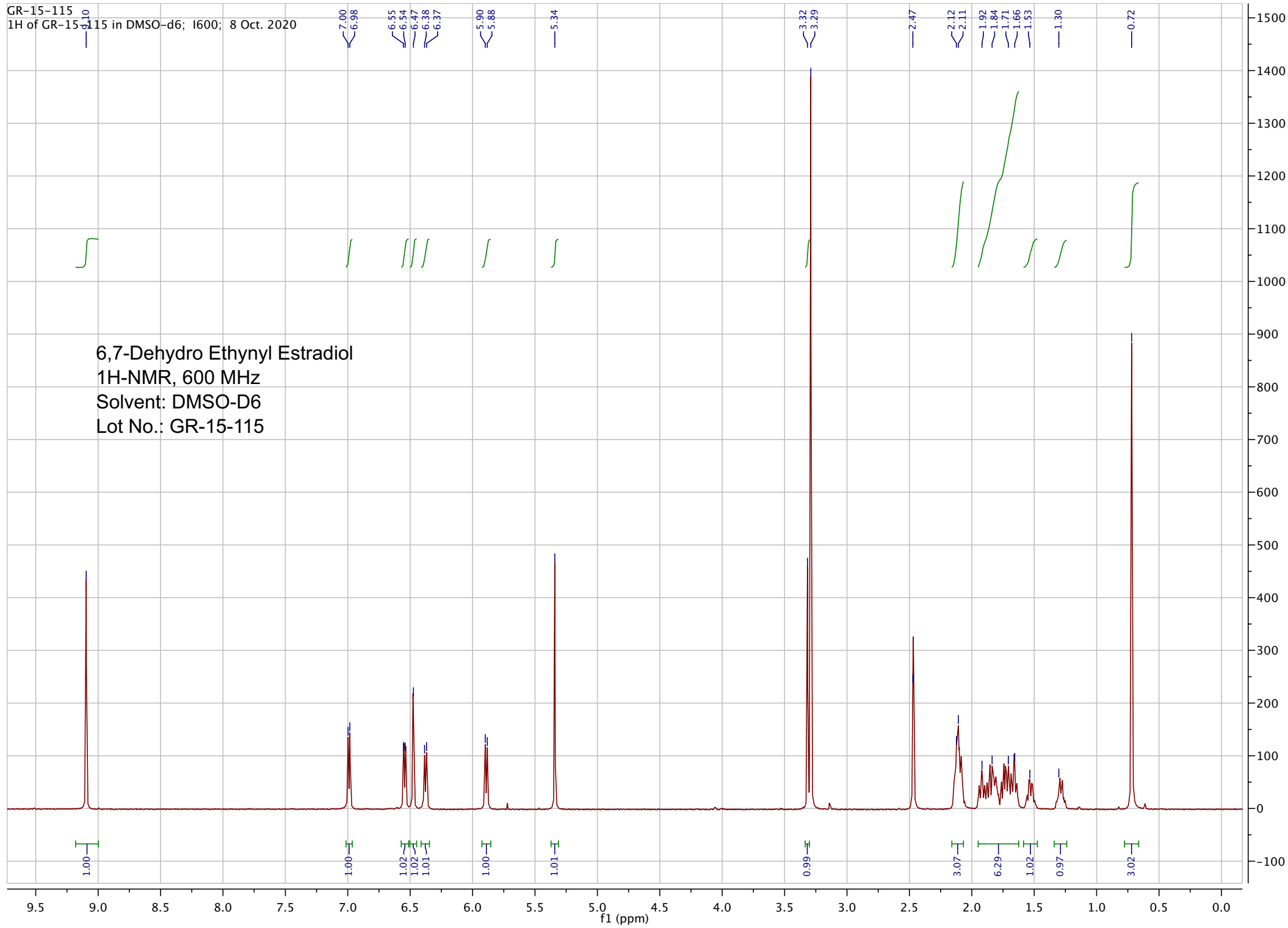
Approved by:

Date: 10/08/2020

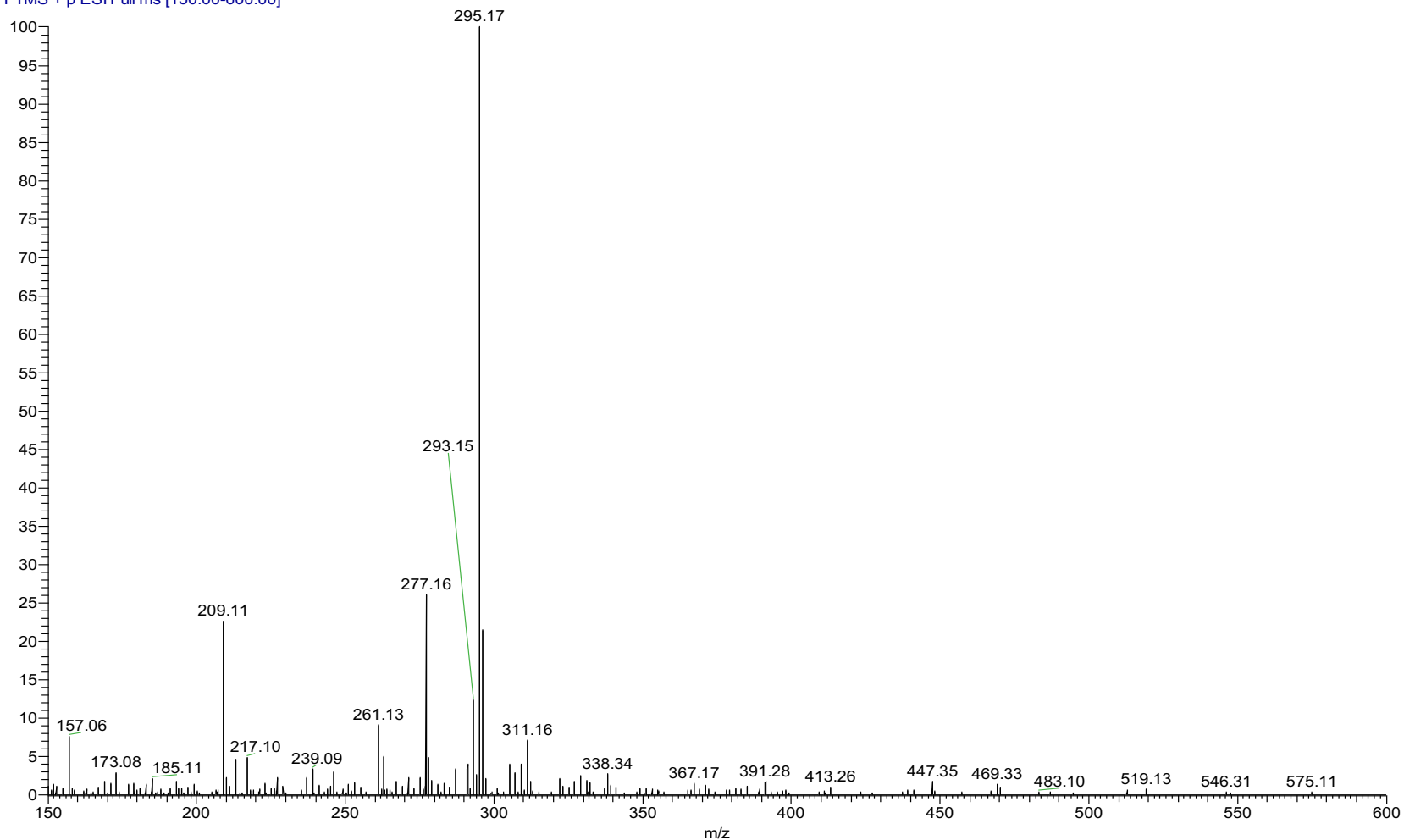


Viorica Rusu, QC/QA Manager

GR-15-115
1H of GR-15-115 in DMSO-d6; I600; 8 Oct. 2020



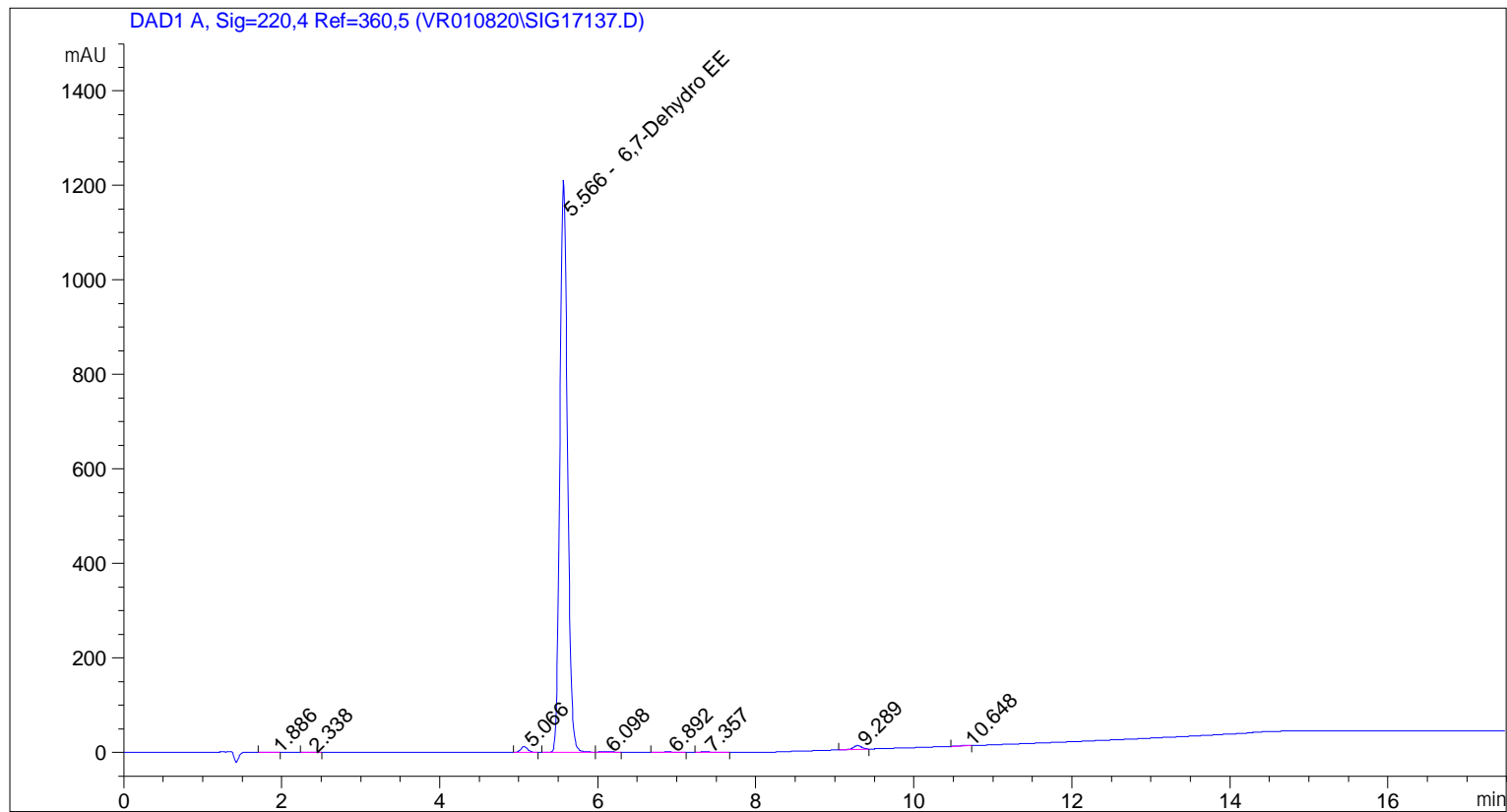
pp_2020_027_GR_15_115_pos_002 #1019 RT: 4.92 AV: 1 NL: 6.04
T: FTMS + p ESI Full ms [150.00-600.00]



ESI-MS spectrum for sample GR-15-115. Shows monoisotopic [M+H]⁺ mass.

```

=====
Acq. Operator   : vrusu
Acq. Instrument : Instrument 1                Location : Vial 31
Injection Date  : 9/23/2020 2:16:28 PM
                                           Inj Volume : 5.0 µl
Acq. Method    : C:\CHEM32\1\METHODS\VR_092320_115.M
Last changed   : 9/23/2020 2:02:03 PM by vrusu
Analysis Method: C:\CHEM32\1\METHODS\VR092320_115PM.M
Last changed   : 9/23/2020 2:43:59 PM by vrusu
  
```



=====
 Area Percent Report
 =====

```

Sorted By      : Signal
Calib. Data Modified : 9/23/2020 2:14:06 PM
Multiplier:    : 1.0000
Dilution:     : 1.0000
Use Multiplier & Dilution Factor with ISTDs
  
```

Signal 1: DAD1 A, Sig=220,4 Ref=360,5

Peak #	RetTime [min]	Type	Width [min]	Area [mAU*s]	Area %	Name
1	1.886	BB	0.0848	3.27207	0.0394	?
2	2.338	BB	0.0753	3.21465	0.0387	?
3	5.066	VB	0.0953	76.96020	0.9256	?
4	5.566	BV	0.1043	8135.83789	97.8524	6,7-Dehydro EE
5	6.098	VB	0.1453	14.94651	0.1798	?
6	6.892	BB	0.1238	7.90462	0.0951	?
7	7.357	BB	0.1252	9.50197	0.1143	?
8	9.289	BB	0.1107	56.20314	0.6760	?

Sample Name: GR-15-115

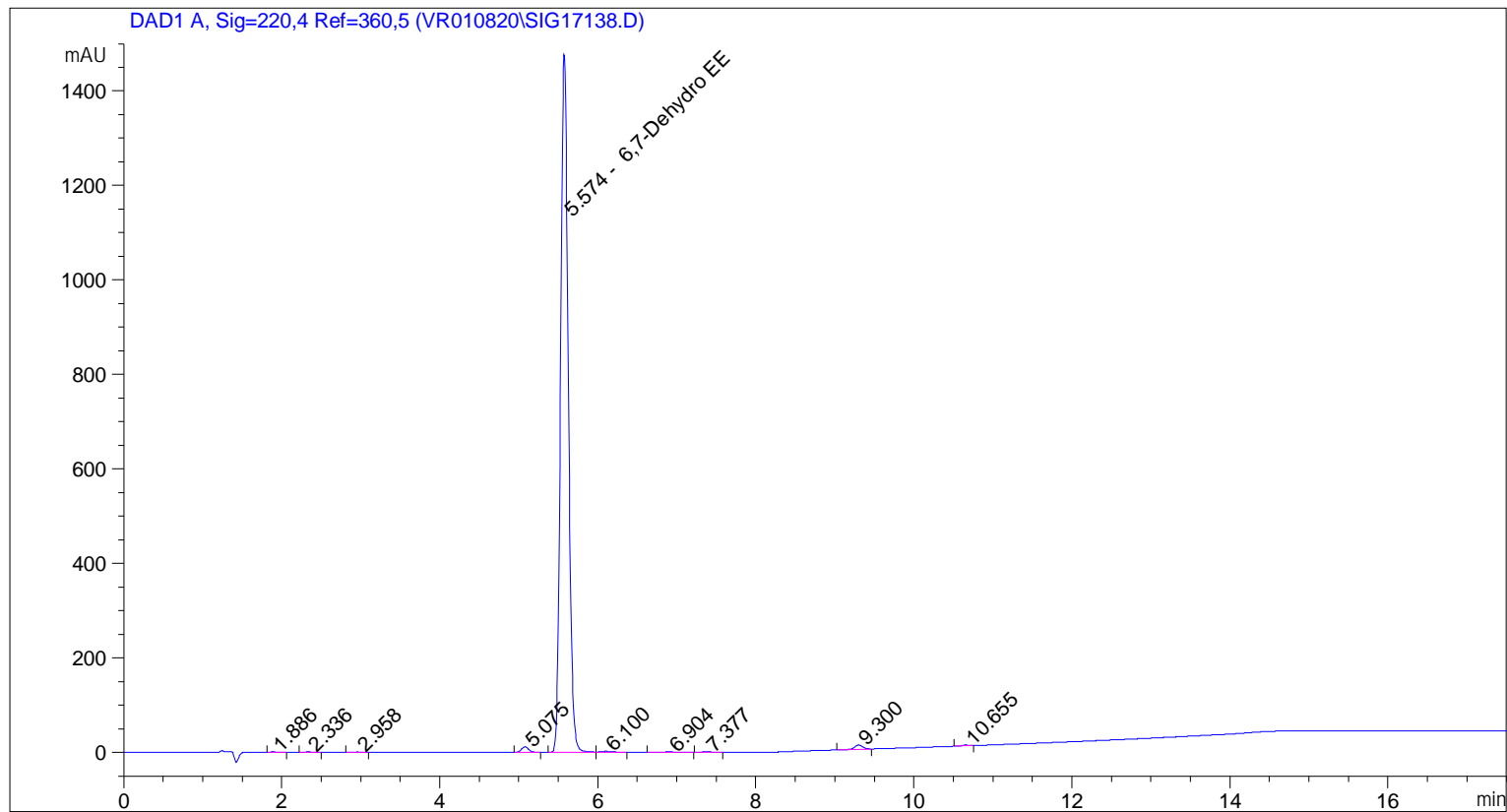
Peak #	RetTime [min]	Type	Width [min]	Area [mAU*s]	Area %	Name
9	10.648	BB	0.0798	6.55890	0.0789	?

Totals : 8314.39994

=====
*** End of Report ***

```

=====
Acq. Operator   : vrusu
Acq. Instrument : Instrument 1                Location : Vial 32
Injection Date  : 9/23/2020 2:45:37 PM
                                           Inj Volume : 5.0 µl
Acq. Method     : C:\CHEM32\1\METHODS\VR_092320_115.M
Last changed    : 9/23/2020 2:44:35 PM by vrusu
Analysis Method : C:\CHEM32\1\METHODS\VR092320_115PM.M
Last changed    : 9/23/2020 3:07:10 PM by vrusu
  
```



=====
 Area Percent Report
 =====

```

Sorted By           :      Signal
Calib. Data Modified :      9/23/2020 2:14:06 PM
Multiplier:         :      1.0000
Dilution:           :      1.0000
Use Multiplier & Dilution Factor with ISTDs
  
```

Signal 1: DAD1 A, Sig=220,4 Ref=360,5

Peak #	RetTime [min]	Type	Width [min]	Area [mAU*s]	Area %	Name
1	1.886	BV	0.0889	5.00506	0.0490	?
2	2.336	BV	0.0772	4.78987	0.0469	?
3	2.958	BB	0.0755	3.76105	0.0368	?
4	5.075	VB	0.0970	73.03643	0.7155	?
5	5.574	BV	0.1069	1.00080e4	98.0367	6,7-Dehydro EE
6	6.100	VB	0.1434	18.98509	0.1860	?
7	6.904	BB	0.1555	10.01682	0.0981	?
8	7.377	BB	0.1280	9.89674	0.0969	?

Sample Name: GR-15-115

Peak #	RetTime [min]	Type	Width [min]	Area [mAU*s]	Area %	Name
9	9.300	BB	0.1125	66.10667	0.6476	?
10	10.655	BB	0.0848	8.81980	0.0864	?

Totals : 1.02084e4

=====
*** End of Report ***