

Name:	Clofentezine Metabolite 2
Lot#:	GR-14-247
Test Date:	05/13/2020 (re-test date: 05/13/2025)
CAS No.:	107573-62-6
MF:	C ₁₄ H ₈ Cl ₂ N ₄ O
MW:	319.15
Appearance:	Light crimson solid
Purity:	97.2% by HPLC
¹H-NMR:	Conforms
MS-ESI (+)	Conforms (shows peaks at m/z = 319.01, 320.01, 321.01 & 322.01 [M+H] ⁺ exhibits the expected isotope pattern for dichloro-compounds)
Storage	Long term store at 0 - 5° C in a dry place away from direct sunlight

Approved by:

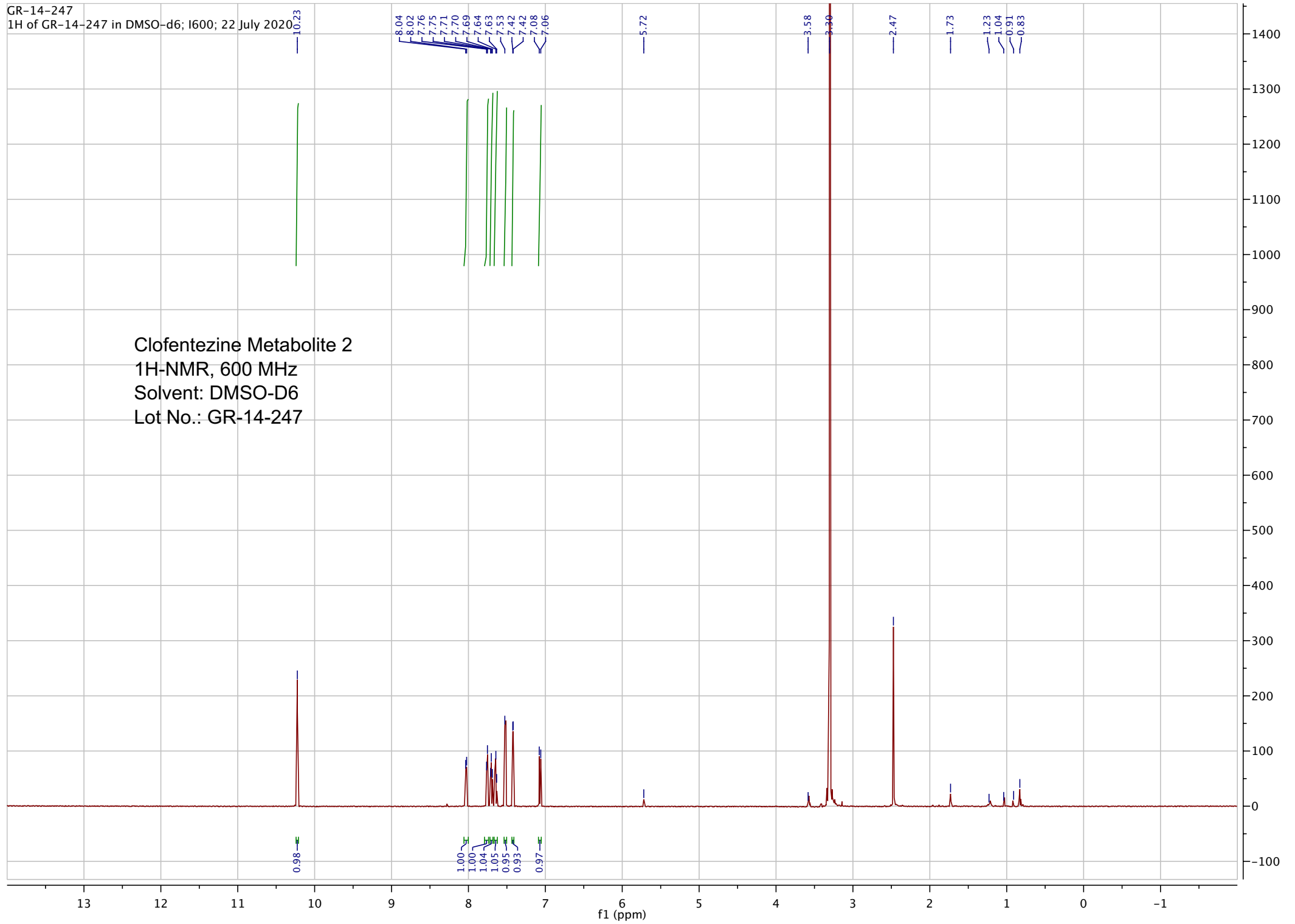
Date: 05/20/2020



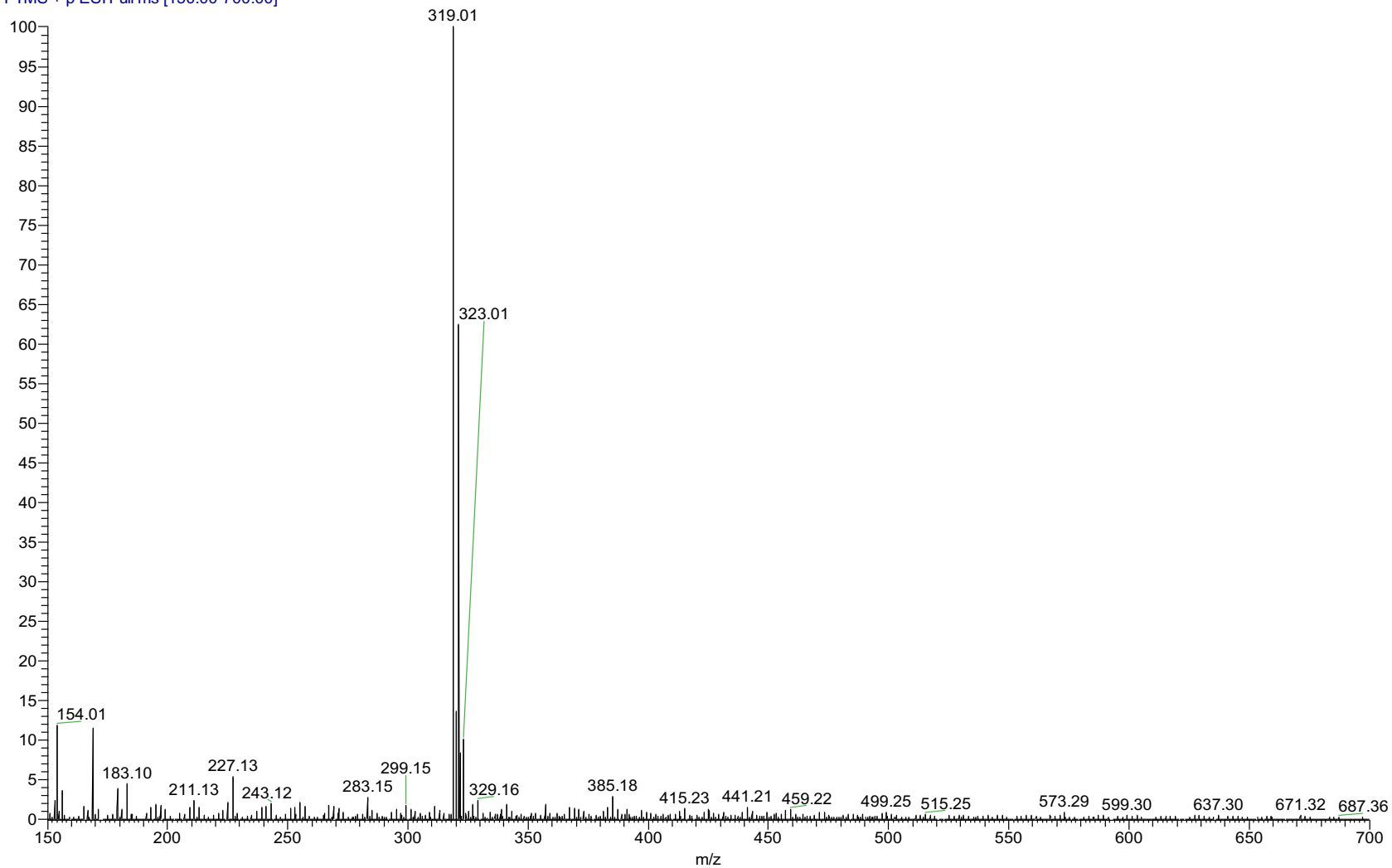
Viorica Rusu, QC/QA Manager

GR-14-247
1H of GR-14-247 in DMSO-d6; 1600; 22 July 2020

Clofentezine Metabolite 2
1H-NMR, 600 MHz
Solvent: DMSO-D6
Lot No.: GR-14-247

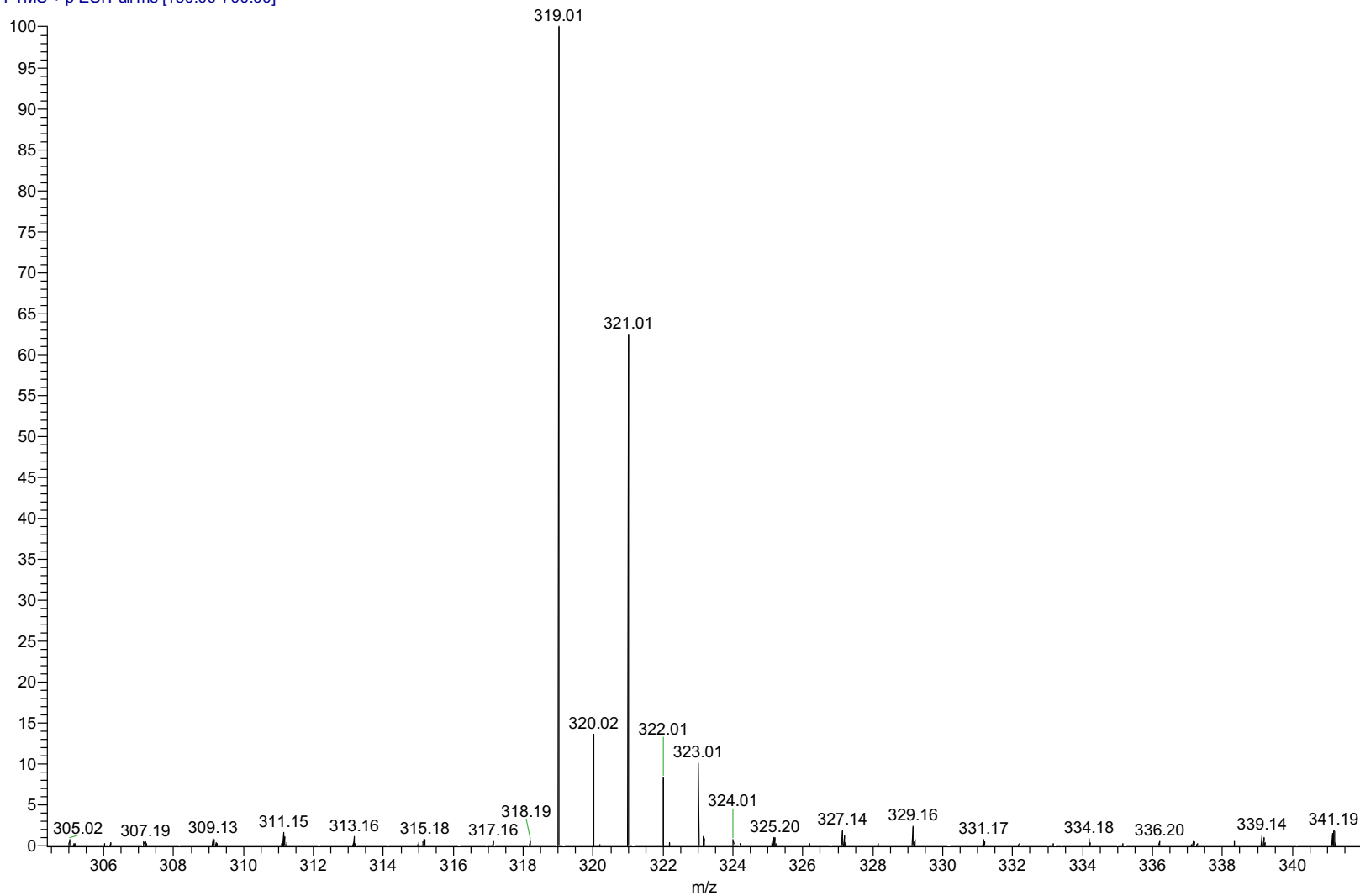


pp_2020_016_GR14247_002 #266 RT: 1.91 AV: 1 NL: 2.30E7
T: FTMS + p ESI Full ms [150.00-700.00]



ESI-MS spectrum for sample GR-14-247. Shows monoisotopic [M+H]⁺ mass.

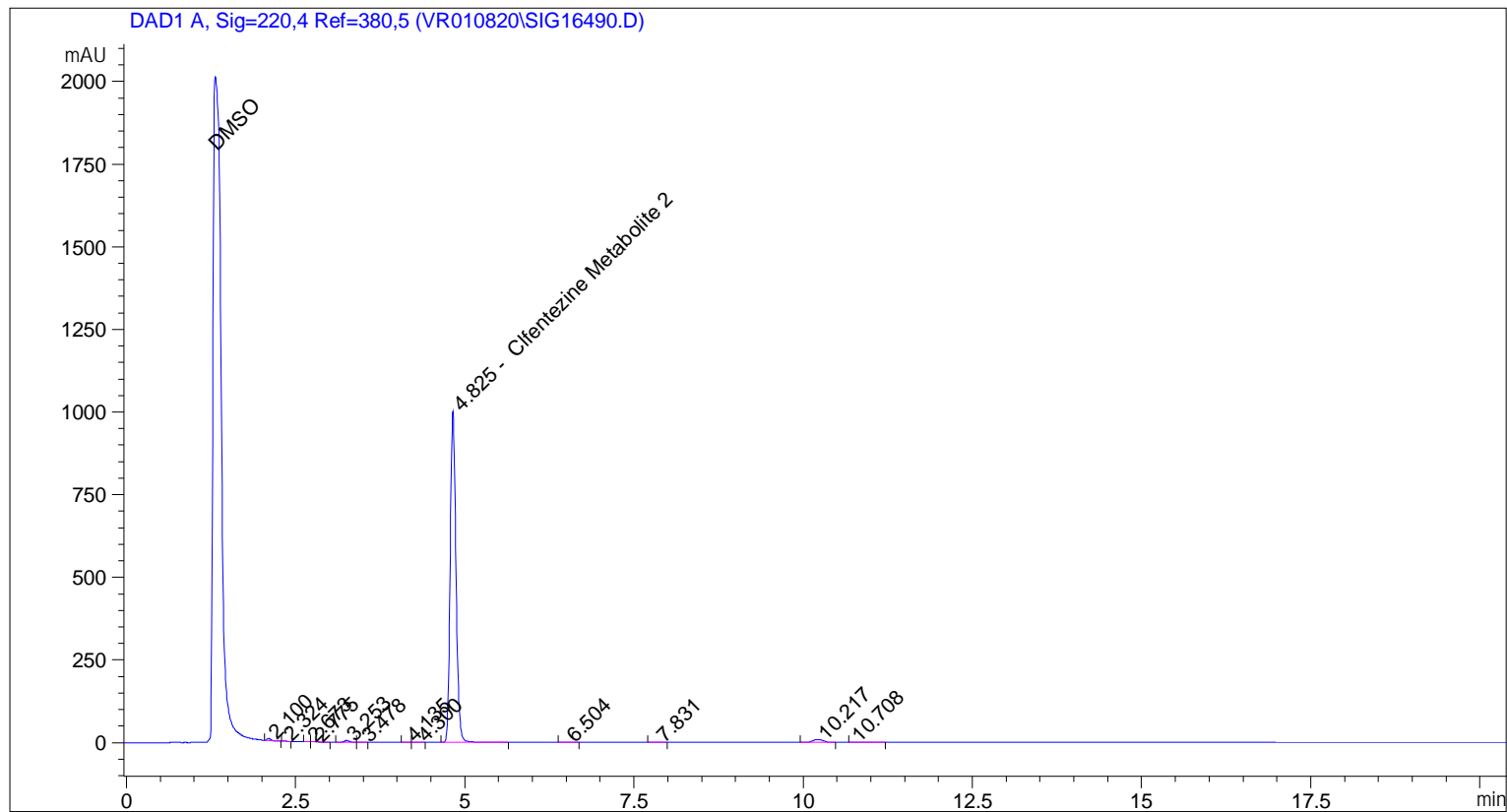
pp_2020_016_GR14247_002 #266 RT: 1.91 AV: 1 NL: 2.30E7
T: FTMS + p ESI Full ms [150.00-700.00]



Expansion of above.

```

=====
Acq. Operator   : vrusu
Acq. Instrument : Instrument 1                Location : Vial 6
Injection Date  : 5/13/2020 12:58:20 PM
                                           Inj Volume : 10.0 µl
Acq. Method    : C:\CHEM32\1\METHODS\VR051320_247.M
Last changed   : 5/13/2020 12:51:08 PM by vrusu
Analysis Method : C:\CHEM32\1\METHODS\VR051320_247PM.M
Last changed   : 5/13/2020 1:21:03 PM by vrusu
  
```



=====
 Area Percent Report
 =====

```

Sorted By      :      Signal
Calib. Data Modified :      5/13/2020 1:20:41 PM
Multiplier:    :      1.0000
Dilution:     :      1.0000
Use Multiplier & Dilution Factor with ISTDs
  
```

Signal 1: DAD1 A, Sig=220,4 Ref=380,5

Peak #	RetTime [min]	Type	Width [min]	Area [mAU*s]	Area %	Name
1	2.100	BB	0.0616	25.03633	0.4100	?
2	2.324	BB	0.0630	1.71120	0.0280	?
3	2.673	BV	0.0574	1.66959	0.0273	?
4	2.775	VB	0.0726	5.17263	0.0847	?
5	3.253	BV	0.0761	23.45973	0.3842	?
6	3.478	VB	0.0828	2.62620	0.0430	?
7	4.135	BV	0.0752	1.59726	0.0262	?
8	4.300	VB	0.0828	2.94585	0.0482	?

Sample Name: GR-14-247

Peak #	RetTime [min]	Type	Width [min]	Area [mAU*s]	Area %	Name
9	4.825	BB	0.0911	5935.21533	97.1974	Clfentezine Metabolite 2
10	6.504	BB	0.0906	2.82883	0.0463	?
11	7.831	BB	0.1132	5.09586	0.0835	?
12	10.217	BV	0.1672	97.27565	1.5930	?
13	10.708	VB	0.5247	1.71931	0.0282	?

Totals : 6106.35378

=====
*** End of Report ***