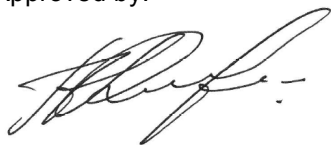


**Name:** 4',4''-O,O-Dimethylcurcumin-D6  
**Lot#:** GR-13-215  
**Test Date:** 07/18/2019 (re-test date: 07/18/2024)  
**CAS No.:** 52328-98-0 (unlabelled), 160096-59-3 (unlabelled)  
**MF:** C<sub>23</sub>H<sub>18</sub>D<sub>6</sub>O<sub>6</sub>  
**MW:** 402.48  
**Appearance:** Yellow Solid  
**Purity:** 99.2% by HPLC;  
**<sup>1</sup>H-NMR:** Conforms  
**MS-ESI (+)** Conforms (shows peaks at m/z = 403.18 [M+H]<sup>+</sup>, 425.17 [M+Na]<sup>+</sup>)

Approved by:

Date: 07/24/2019



Viorica Rusu, QC/QA Manager

7.58  
7.55  
7.33  
7.25  
7.24  
6.99  
6.98  
6.80

3.81  
3.79

3.31

2.48

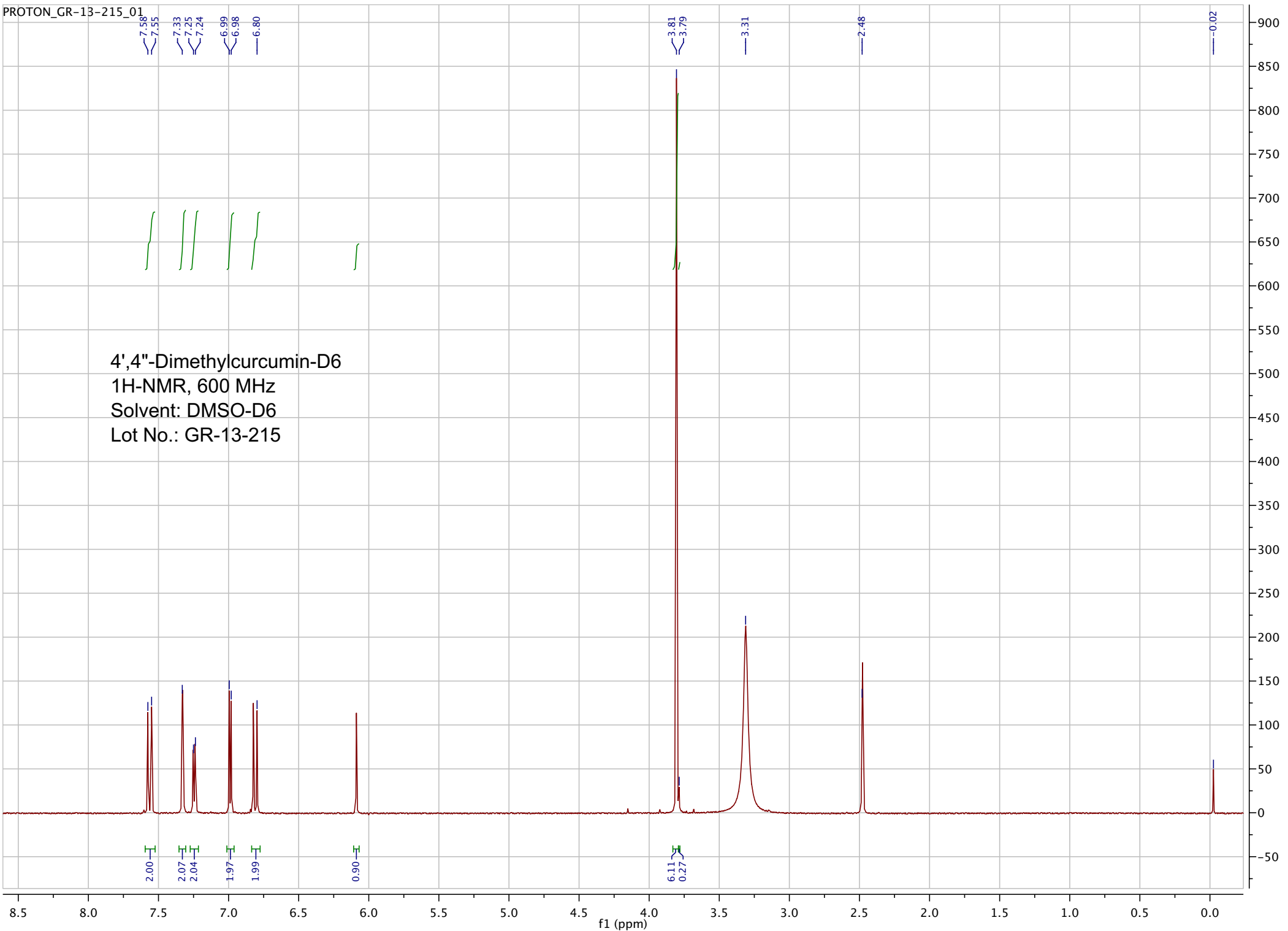
-0.02

4',4''-Dimethylcurcumin-D6  
1H-NMR, 600 MHz  
Solvent: DMSO-D6  
Lot No.: GR-13-215

2.00  
2.07  
2.04  
1.97  
1.99

0.90

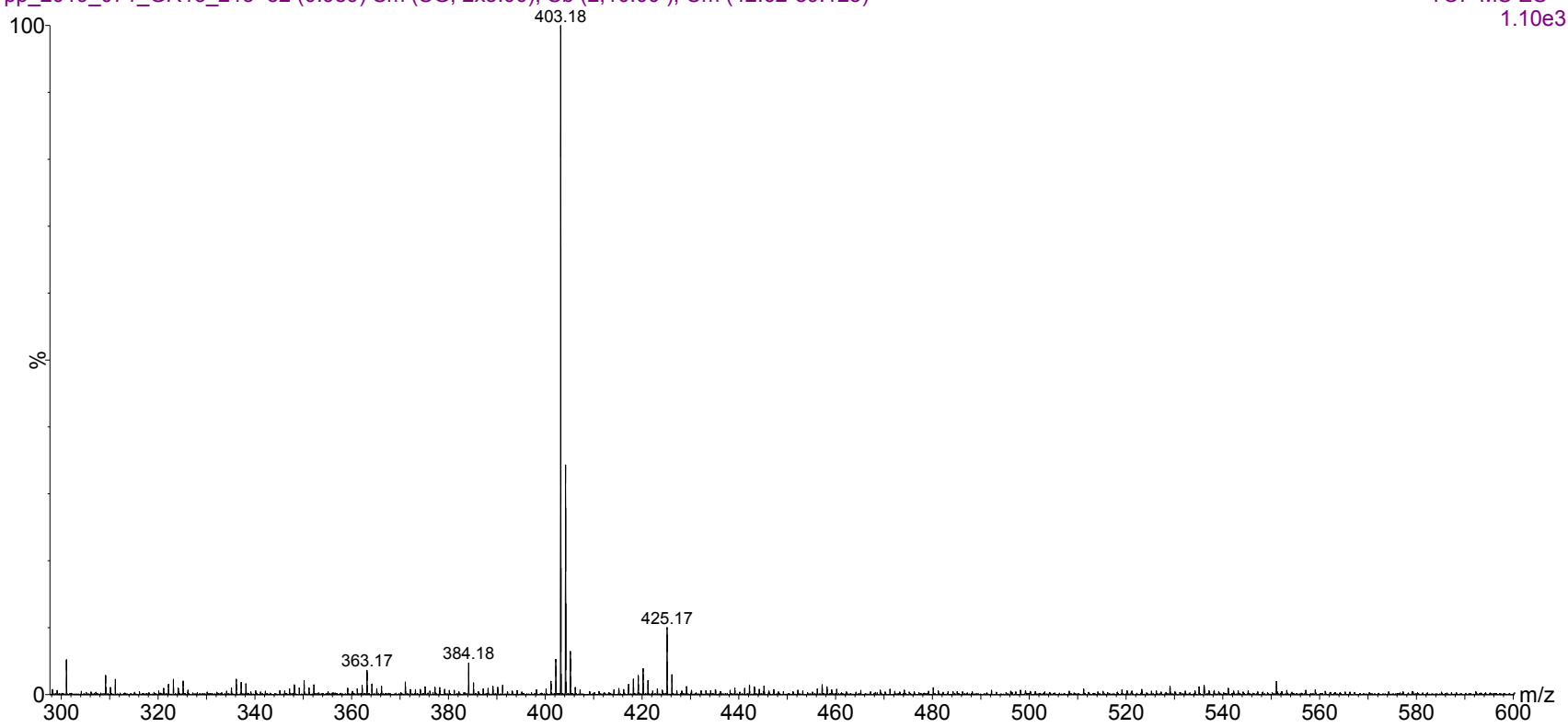
6.11  
0.27



11-Jul-2019, 12:21:20

TOF MS ES+  
1.10e3

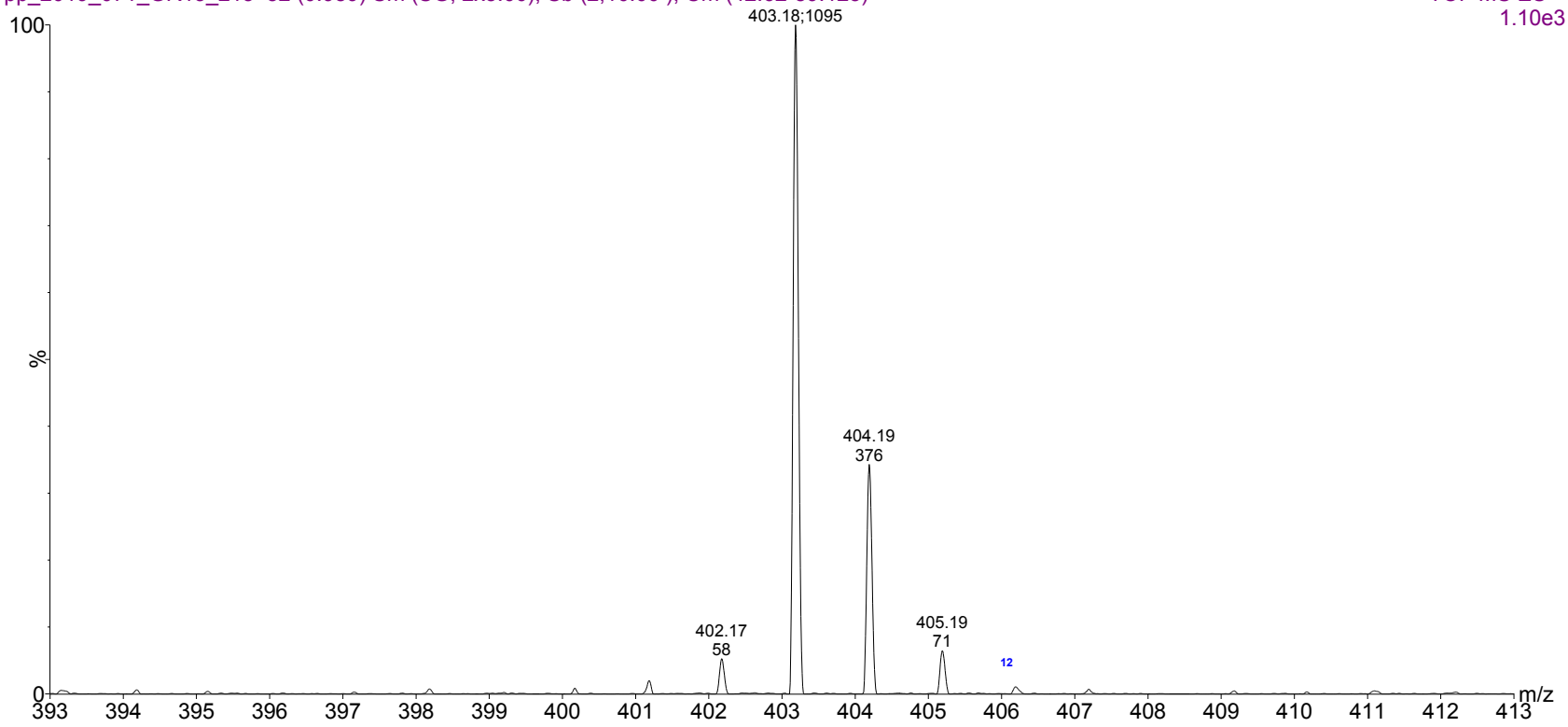
pp\_2019\_071\_GR13\_215 52 (0.989) Sm (SG, 2x5.00); Sb (2,10.00 ); Cm (42:62-89:125)



ESI-MS spectrum for sample GR-13-215. Shows monoisotopic  $[M+H]^+$  mass.

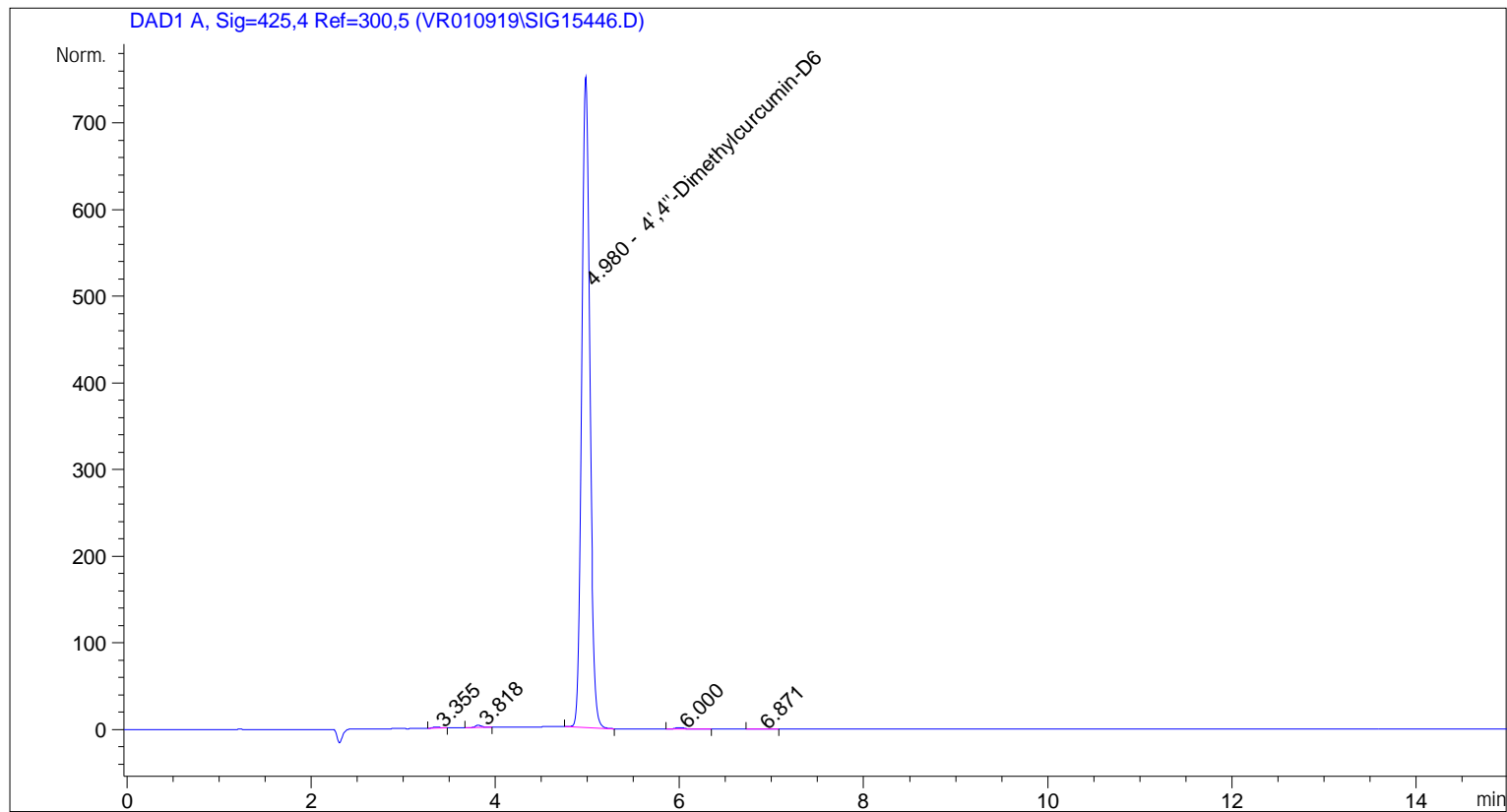
11-Jul-2019, 12:21:20  
TOF MS ES+  
1.10e3

pp\_2019\_071\_GR13\_215 52 (0.989) Sm (SG, 2x5.00); Sb (2,10.00 ); Cm (42:62-89:125)



Expansion of above showing intensity.

=====  
Acq. Operator : vrusu  
Acq. Instrument : Instrument 1 Location : Vial 56  
Injection Date : 7/18/2019 12:32:55 PM Inj Volume : 3.0 µl  
Acq. Method : C:\CHEM32\1\METHODS\VR071819\_215.M  
Last changed : 7/18/2019 12:31:28 PM by vrusu  
Analysis Method : C:\CHEM32\1\METHODS\VR071819\_215PM.M  
Last changed : 7/18/2019 12:52:31 PM by vrusu



=====  
Area Percent Report  
=====

Sorted By : Signal  
Calib. Data Modified : 7/18/2019 12:49:38 PM  
Multiplier: : 1.0000  
Dilution: : 1.0000  
Use Multiplier & Dilution Factor with ISTDs

Signal 1: DAD1 A, Sig=425,4 Ref=300,5

Peak #	RetTime [min]	Type	Width [min]	Area [mAU*s]	Area %	Name
1	3.355	BB	0.0812	6.81443	0.1468	?
2	3.818	BB	0.0780	13.88388	0.2991	?
3	4.980	BB	0.0954	4602.46826	99.1632	4',4''-Dimethylcurcumin-D6
4	6.000	BB	0.1094	14.55345	0.3136	?
5	6.871	BB	0.1250	3.58443	0.0772	?

Totals : 4641.30446

=====

\*\*\* End of Report \*\*\*