

Name:	Salmeterol-D3
Lot#:	GR-7-007
Test Date:	07/02/2020 (re-test date: 07/02/2025)
CAS No.:	497063-94-2
MF:	C ₂₅ H ₃₄ D ₃ NO ₄
MW:	418.58
Appearance:	Off-White Solid
Purity:	97.9% by HPLC; >98% atom D
¹H-NMR:	Conforms
MS-ESI (+)	Conforms (shows peak at m/z = 419.39 [M+H] ⁺)
Storage	Store at 0-8°C in a dry place away from direct sunlight

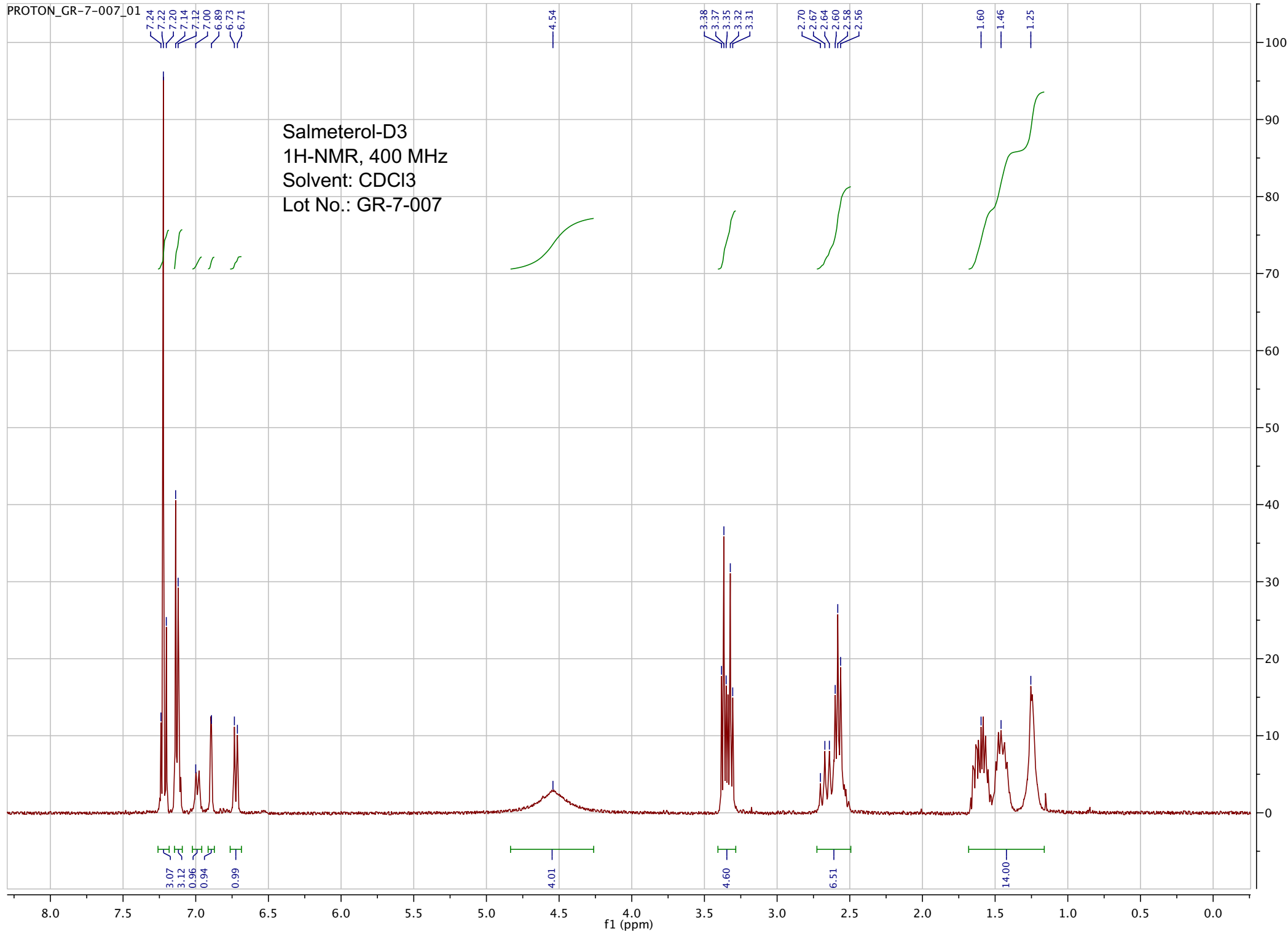
Approved by:

Date: 07/02/2020



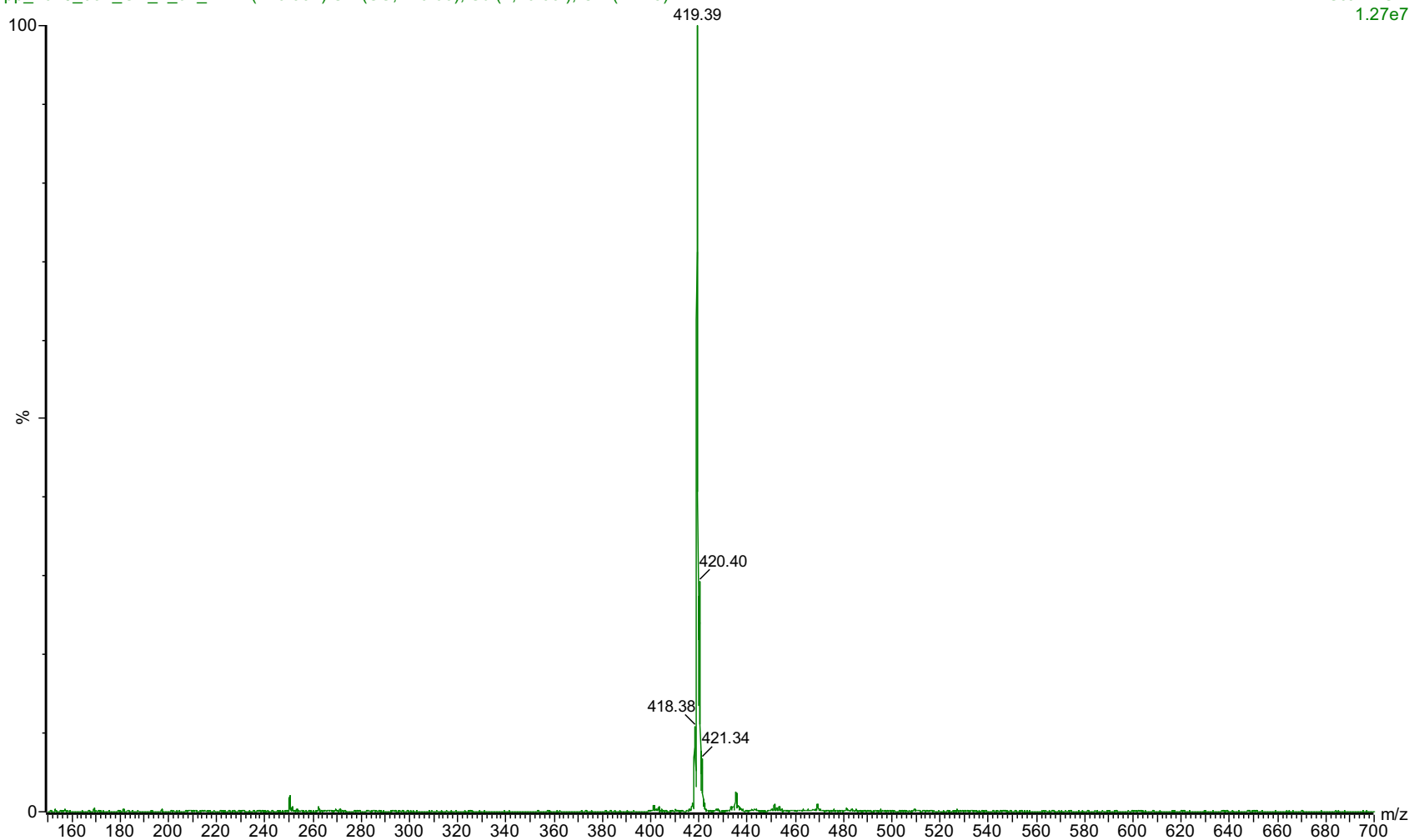
Viorica Rusu, QC/QA Manager

Salmeterol-D3
1H-NMR, 400 MHz
Solvent: CDCl3
Lot No.: GR-7-007



pp_2020_097_GR_7_07_1 17 (0.994) Sm (SG, 2x0.60); Sb (2,10.00); Cm (17:18)

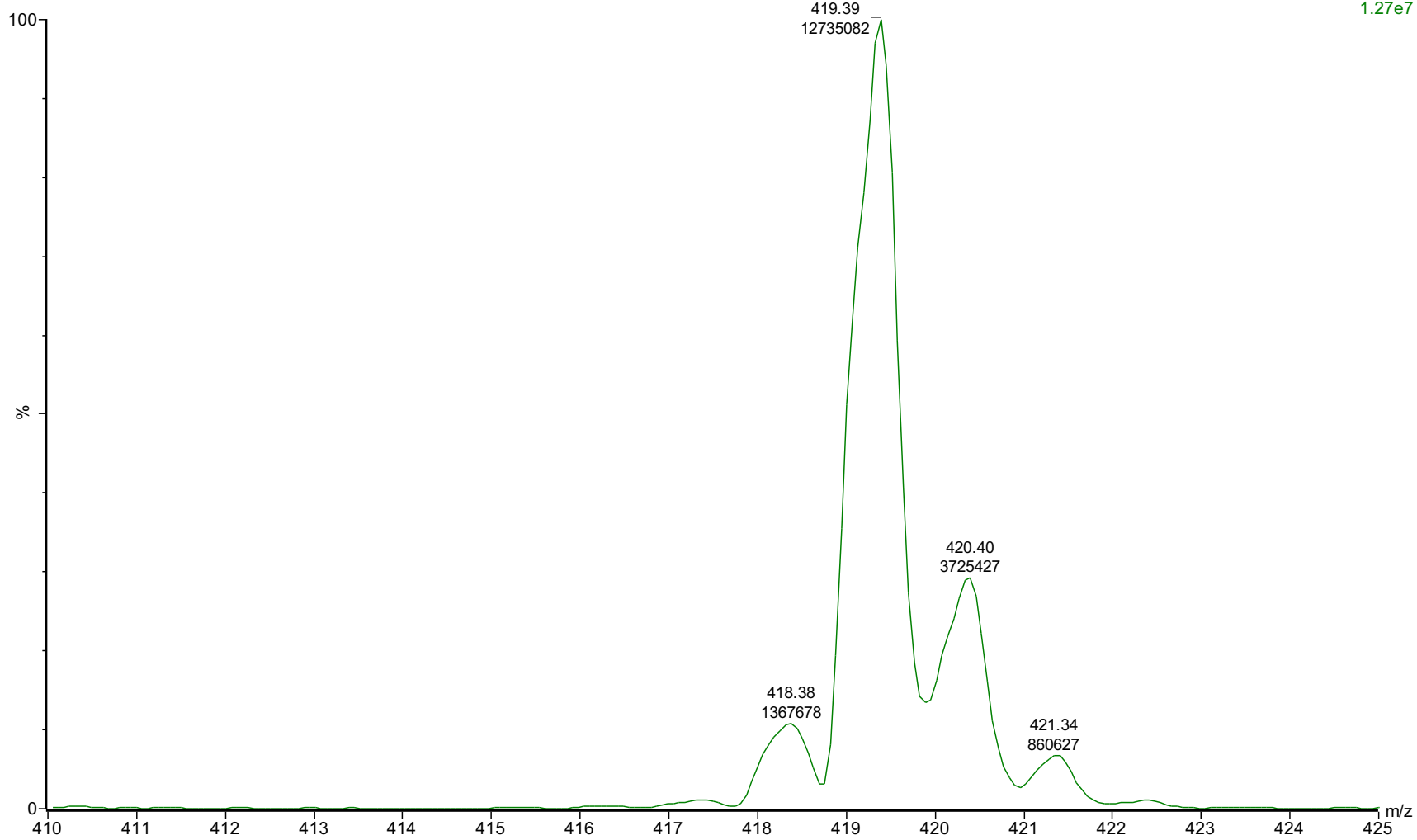
1: Scan ES+
1.27e7



ESI-MS spectrum for sample GR-7-007. Shows monoisotopic [M+H]⁺ mass.

pp_2020_097_GR_7_07_1 17 (0.994) Sm (SG, 2x0.60); Sb (2,10.00); Cm (17:18)

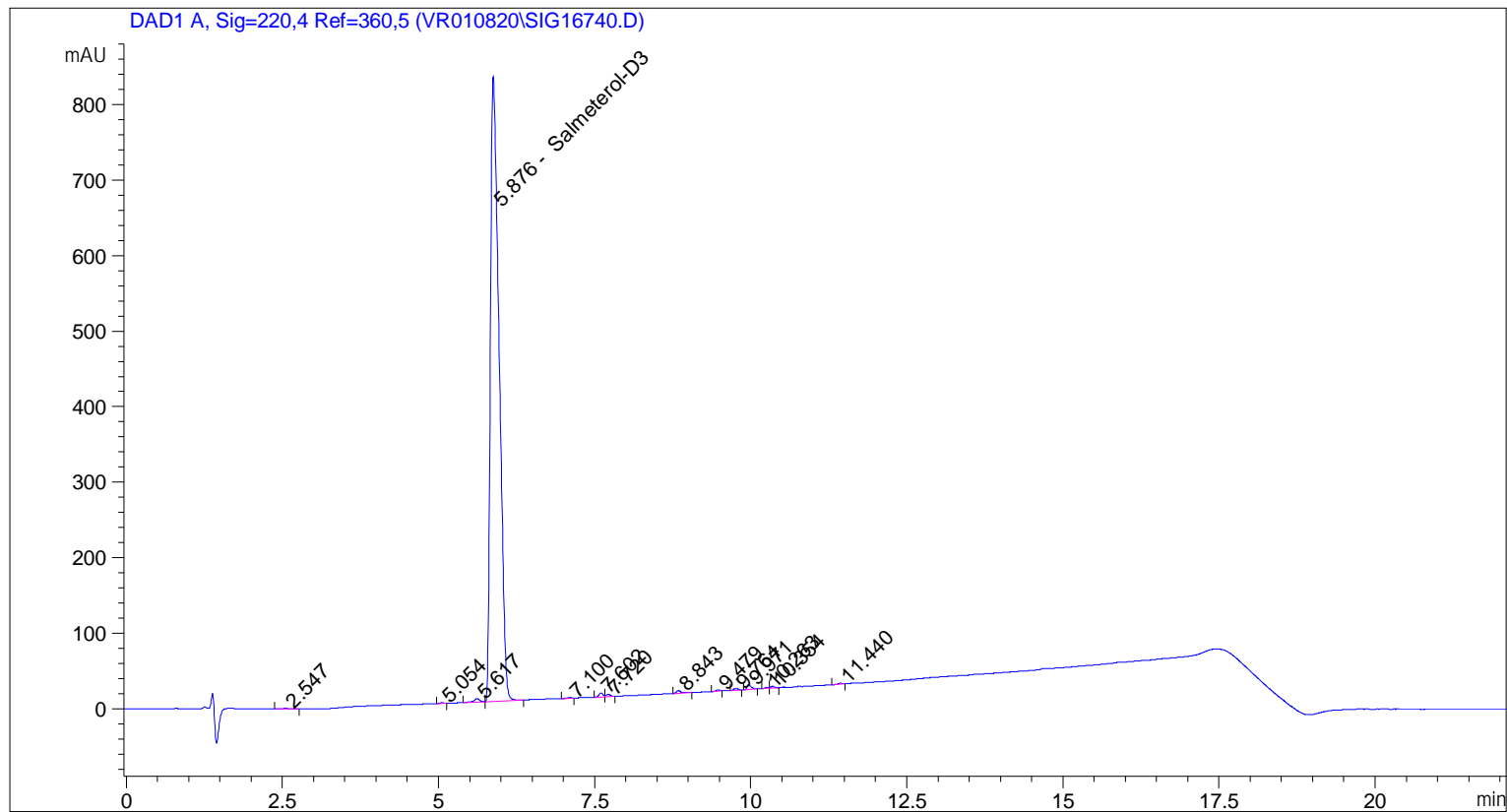
1: Scan ES+
1.27e7



Expansion of above showing peak intensities. (as requested)

```

=====
Acq. Operator   : vrusu
Acq. Instrument : Instrument 1                Location : Vial 19
Injection Date  : 7/2/2020 9:07:50 AM
                                           Inj Volume : 10.0 µl
Acq. Method     : C:\CHEM32\1\METHODS\VR070220_007.M
Last changed    : 7/2/2020 9:06:48 AM by vrusu
Analysis Method : C:\CHEM32\1\METHODS\VR070220_007PM.M
Last changed    : 7/2/2020 10:10:44 AM by vrusu
  
```



=====
 Area Percent Report
 =====

```

Sorted By           :      Signal
Calib. Data Modified :      7/2/2020 10:10:25 AM
Multiplier:         :      1.0000
Dilution:           :      1.0000
Use Multiplier & Dilution Factor with ISTDs
  
```

Signal 1: DAD1 A, Sig=220,4 Ref=360,5

Peak #	RetTime [min]	Type	Width [min]	Area [mAU*s]	Area %	Name
1	2.547	BB	0.1134	5.58244	0.0687	?
2	5.054	BB	0.0781	3.95349	0.0486	?
3	5.617	BV	0.0878	30.08988	0.3700	?
4	5.876	VB	0.1503	7957.00830	97.8545	Salmeterol-D3
5	7.100	BB	0.0678	3.80597	0.0468	?
6	7.602	BV	0.0667	24.14738	0.2970	?
7	7.720	VB	0.0697	14.04152	0.1727	?
8	8.843	BB	0.0815	19.72649	0.2426	?

Sample Name: GR-7-007

Peak #	RetTime [min]	Type	Width [min]	Area [mAU*s]	Area %	Name
9	9.479	BB	0.0594	6.36065	0.0782	?
10	9.764	BB	0.0769	12.09580	0.1488	?
11	9.971	BB	0.0703	31.50297	0.3874	?
12	10.263	BV	0.0588	6.39417	0.0786	?
13	10.354	VB	0.0694	11.11643	0.1367	?
14	11.440	BB	0.0698	5.64372	0.0694	?

Totals : 8131.46921

=====
*** End of Report ***