

<b>Name:</b>	<b>18-Methyl Ethynyl Estradiol</b>
<b>Lot#:</b>	GR-7-285
<b>Test Date:</b>	11/16/2020 (re-test date: 11/16/2025)
<b>CAS No.:</b>	14012-72-7
<b>MF:</b>	C <sub>21</sub> H <sub>26</sub> O <sub>2</sub>
<b>MW:</b>	310.43
<b>Appearance:</b>	White solid
<b>Purity:</b>	96.5% by HPLC (average of two sample preparations)
<b><sup>1</sup>H-NMR:</b>	Conforms (contains a trace of EtOAc)
<b>MS-ESI (+)</b>	Conforms (shows peaks at m/z = 311.18 [M+H] <sup>+</sup> and 293.13 [M-H <sub>2</sub> O+H] <sup>+</sup> )
<b>Storage</b>	Store at -18°C in a dry place away from direct sunlight

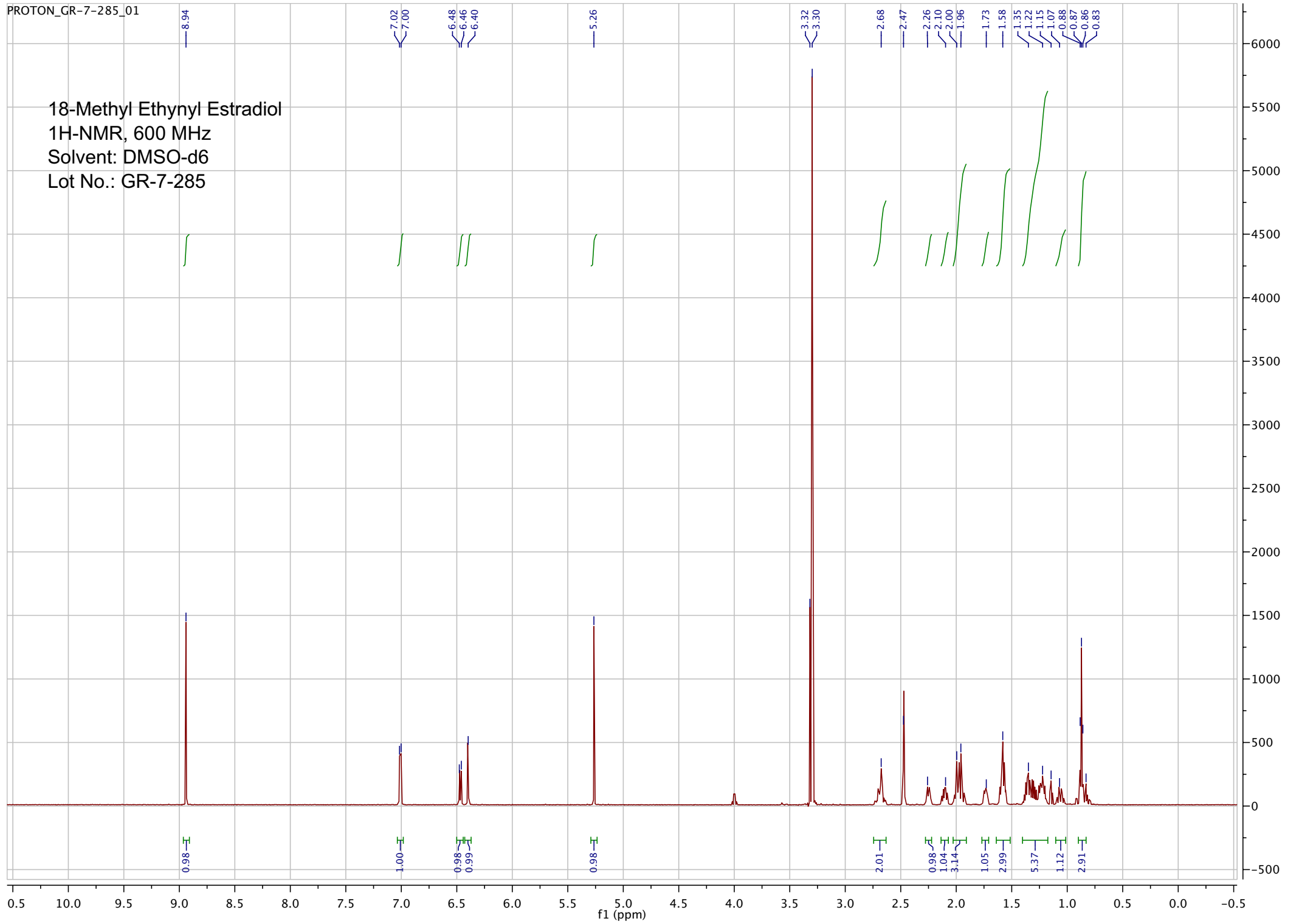
Approved by:

Date: 11/16/2020



Viorica Rusu, QC/QA Manager

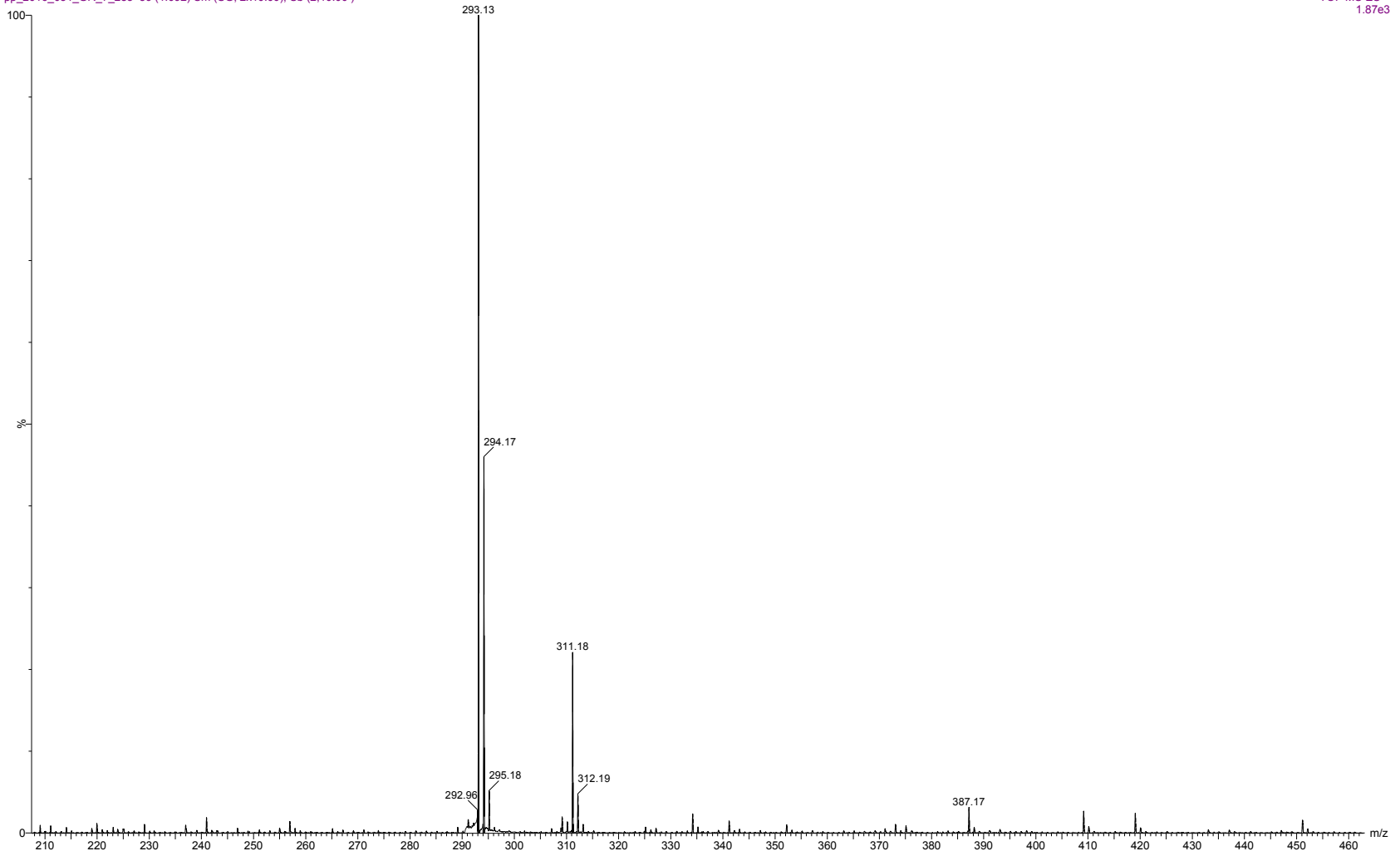
18-Methyl Ethynyl Estradiol  
1H-NMR, 600 MHz  
Solvent: DMSO-d6  
Lot No.: GR-7-285



pp\_2016\_051\_GR\_7\_285 59 (1.092) Sm (SG, 2x10.00); Sb (2,10.00 )

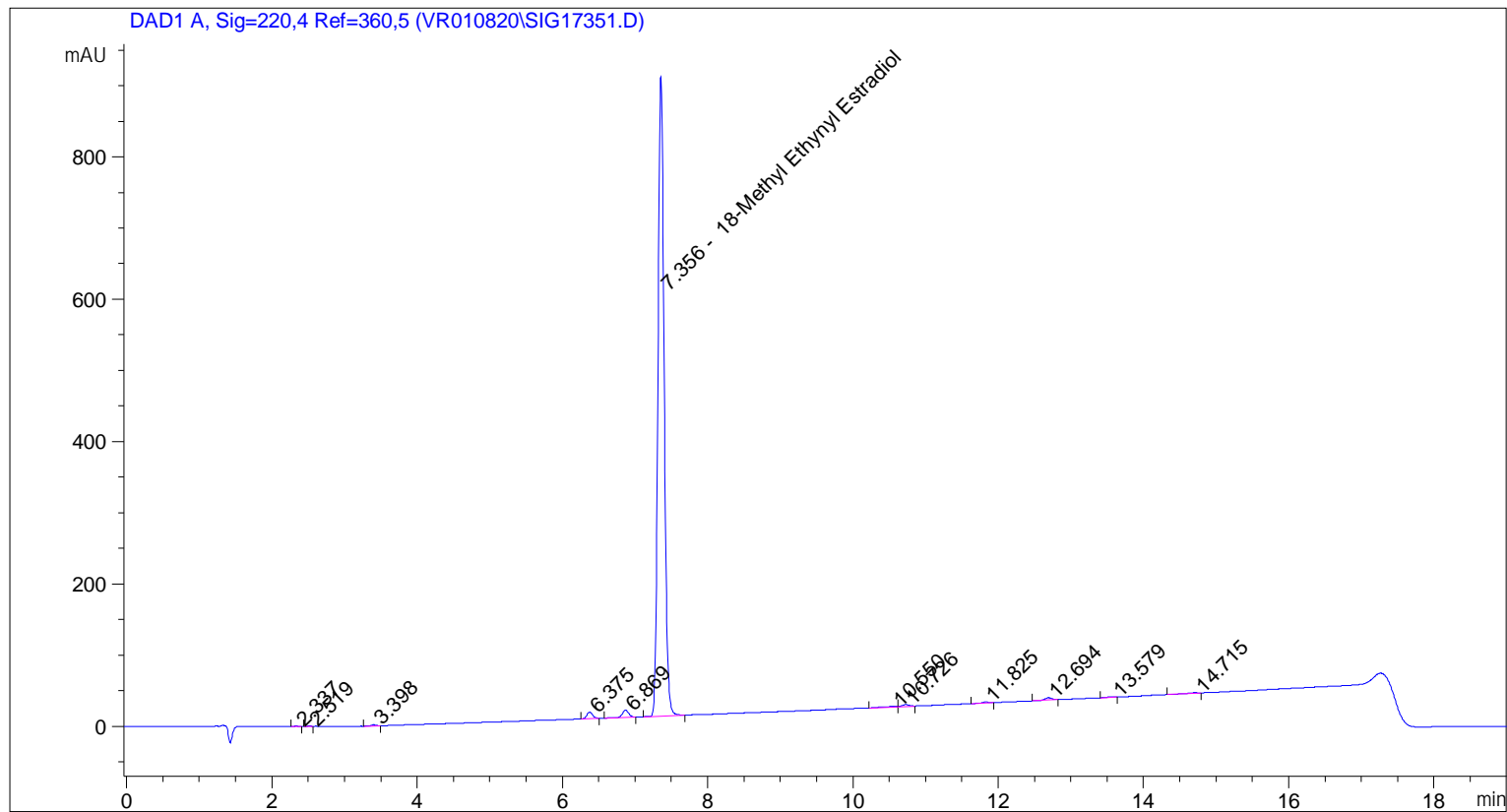
7.0000000

25-May-2016, 16:35:42  
TOF MS ES+  
1.87e3



```

=====
Acq. Operator   : vrusu
Acq. Instrument : Instrument 1                Location : Vial 45
Injection Date  : 11/16/2020 9:06:07 AM
                                           Inj Volume : 5.0 µl
Acq. Method     : C:\CHEM32\1\METHODS\VR111620_285.M
Last changed    : 11/16/2020 9:04:59 AM by vrusu
Analysis Method  : C:\CHEM32\1\METHODS\VR111620_285PM.M
Last changed     : 11/16/2020 9:30:19 AM by vrusu
  
```



Area Percent Report

```

Sorted By           : Signal
Calib. Data Modified : 11/16/2020 9:29:56 AM
Multiplier:         : 1.0000
Dilution:           : 1.0000
Use Multiplier & Dilution Factor with ISTDs
  
```

Signal 1: DAD1 A, Sig=220,4 Ref=360,5

Peak #	RetTime [min]	Type	Width [min]	Area [mAU*s]	Area %	Name
1	2.337	BB	0.0652	1.99261	0.0365	?
2	2.519	BB	0.0628	1.21530	0.0222	?
3	3.398	BB	0.0759	7.54557	0.1381	?
4	6.375	BB	0.0857	49.27566	0.9018	?
5	6.869	BB	0.0897	61.06363	1.1176	?
6	7.356	BB	0.0923	5271.91943	96.4861	18-Methyl Ethynyl Estradiol
7	10.550	BV	0.1557	12.32967	0.2257	?
8	10.726	VB	0.1024	17.35331	0.3176	?

Sample Name: GR-7-285

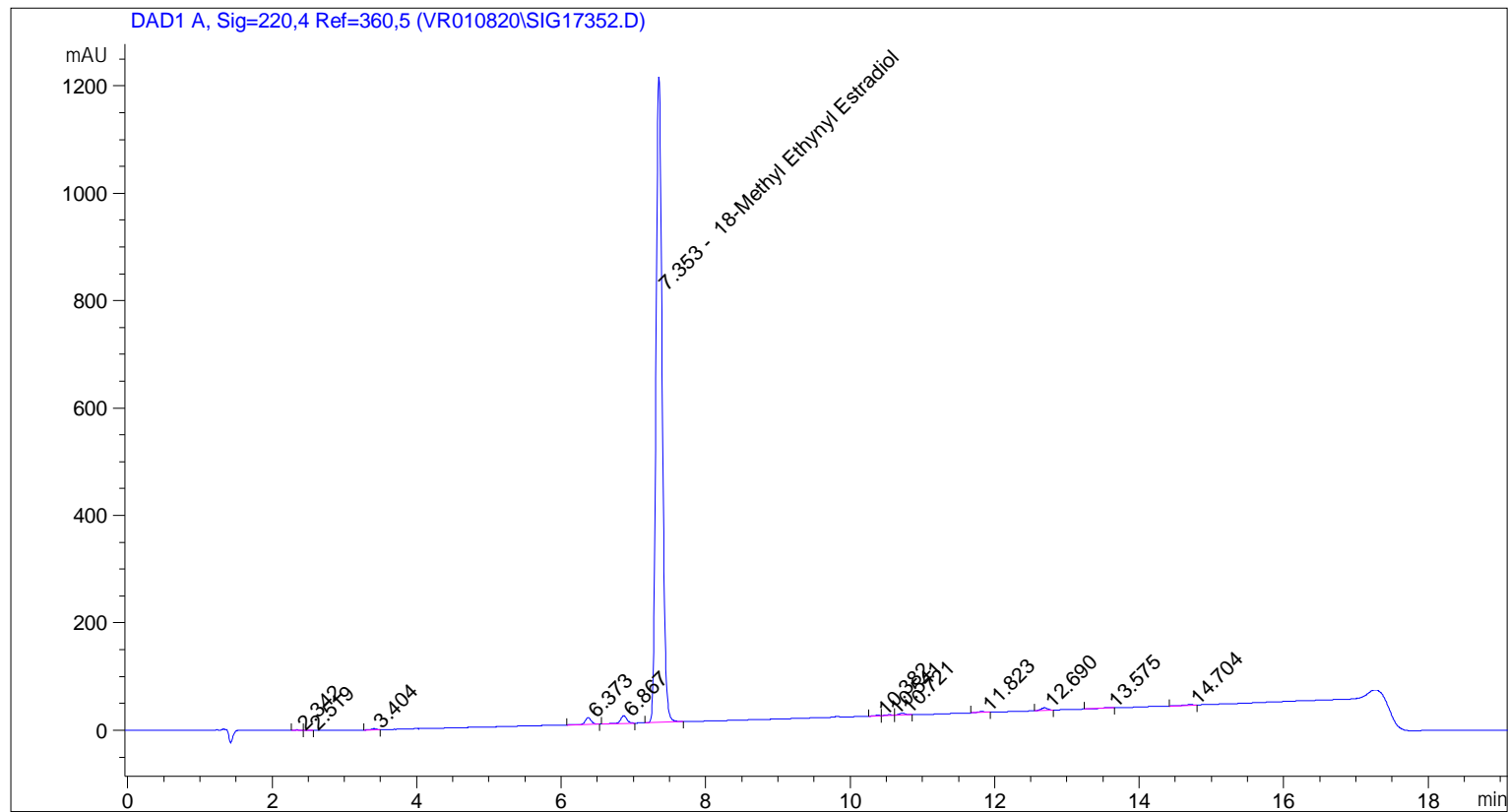
Peak #	RetTime [min]	Type	Width [min]	Area [mAU*s]	Area %	Name
9	11.825	BB	0.1013	8.55099	0.1565	?
10	12.694	BB	0.1021	21.67568	0.3967	?
11	13.579	BB	0.0950	4.81336	0.0881	?
12	14.715	BBA	0.1307	6.18270	0.1132	?

Totals : 5463.91791

=====  
\*\*\* End of Report \*\*\*

```

=====
Acq. Operator   : vrusu
Acq. Instrument : Instrument 1                Location : Vial 46
Injection Date  : 11/16/2020 9:27:26 AM
                                           Inj Volume : 5.0 µl
Acq. Method     : C:\CHEM32\1\METHODS\VR111620_285.M
Last changed    : 11/16/2020 9:26:29 AM by vrusu
Analysis Method : C:\CHEM32\1\METHODS\VR111620_285PM.M
Last changed    : 11/16/2020 9:30:19 AM by vrusu
  
```



=====  
 Area Percent Report  
 =====

```

Sorted By           :      Signal
Calib. Data Modified :      11/16/2020 9:29:56 AM
Multiplier:         :      1.0000
Dilution:           :      1.0000
Use Multiplier & Dilution Factor with ISTDs
  
```

Signal 1: DAD1 A, Sig=220,4 Ref=360,5

Peak #	RetTime [min]	Type	Width [min]	Area [mAU*s]	Area %	Name
1	2.342	BB	0.0661	2.48370	0.0336	?
2	2.519	BB	0.0610	1.29519	0.0175	?
3	3.404	BB	0.0731	9.31502	0.1259	?
4	6.373	BB	0.0870	69.72649	0.9427	?
5	6.867	BB	0.0897	83.99243	1.1355	?
6	7.353	BB	0.0932	7134.04834	96.4486	18-Methyl Ethynyl Estradiol
7	10.382	BV	0.0856	5.33793	0.0722	?
8	10.541	VV	0.0969	9.38605	0.1269	?

Sample Name: GR-7-285 spl 2

Peak #	RetTime [min]	Type	Width [min]	Area [mAU*s]	Area %	Name
9	10.721	VB	0.0990	22.47423	0.3038	?
10	11.823	BB	0.1028	12.29738	0.1663	?
11	12.690	BB	0.0988	30.16122	0.4078	?
12	13.575	BB	0.1016	8.00635	0.1082	?
13	14.704	BBA	0.1137	8.21490	0.1111	?

Totals : 7396.73923

=====

\*\*\* End of Report \*\*\*