

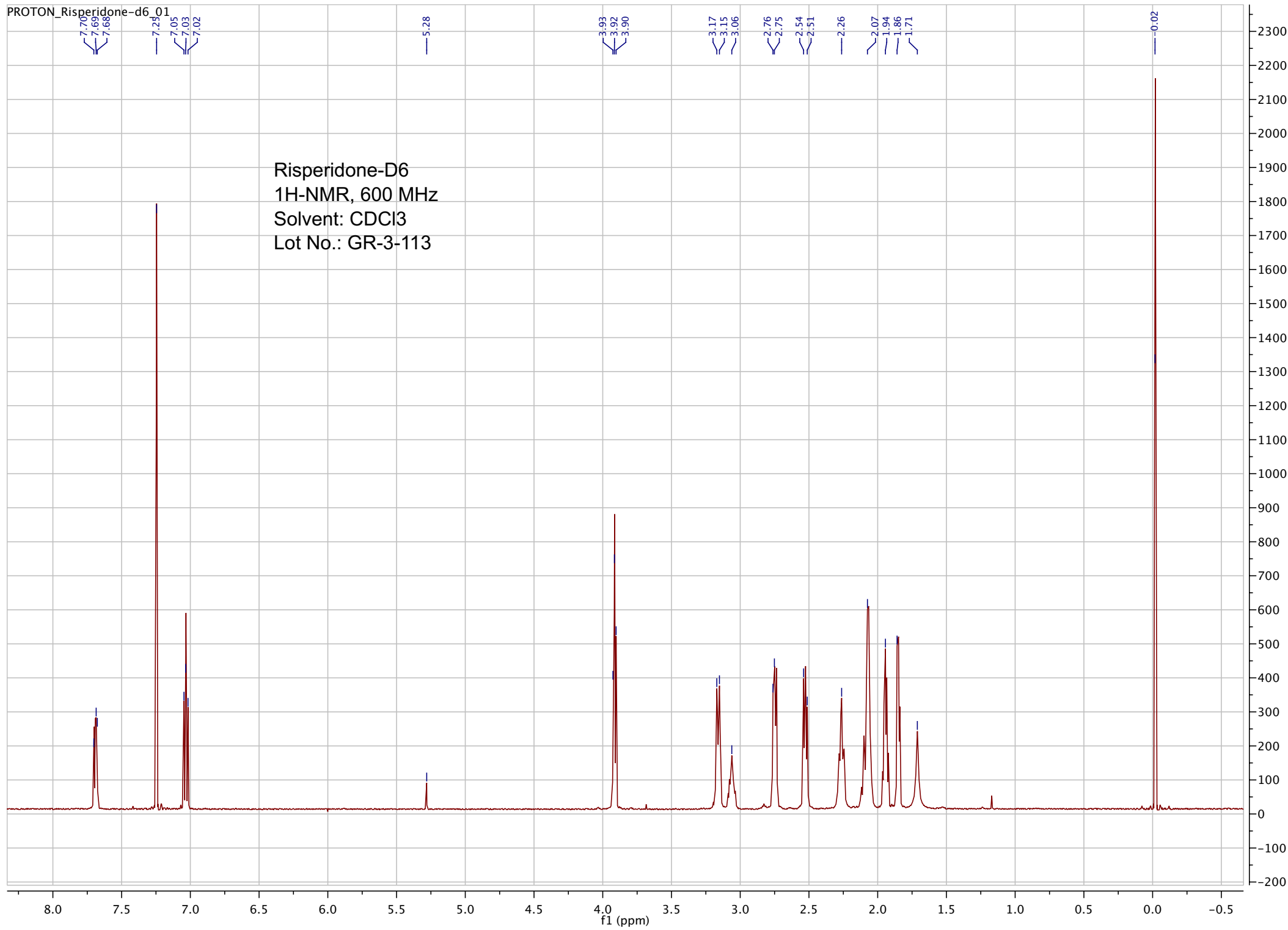
<b>Name:</b>	<b>Risperidone-D6</b>
<b>Lot#:</b>	GR-3-113
<b>Test Date:</b>	03/04/2020 (re-test date: 03/04/2025)
<b>CAS No.:</b>	106266-06-2 (unlabeled)
<b>MF:</b>	C <sub>23</sub> H <sub>21</sub> D <sub>6</sub> FN <sub>4</sub> O <sub>2</sub>
<b>MW:</b>	416.53
<b>Appearance:</b>	Off-white Solid
<b>Purity:</b>	99.9% by HPLC; >98% atom D
<b><sup>1</sup>H-NMR:</b>	Conforms
<b>MS-ESI (+)</b>	Conforms (shows peak at m/z = 417.26 [M+H] <sup>+</sup> )
<b>Storage</b>	Long term store at - 20° C in a dry place away from direct sunlight

Approved by:

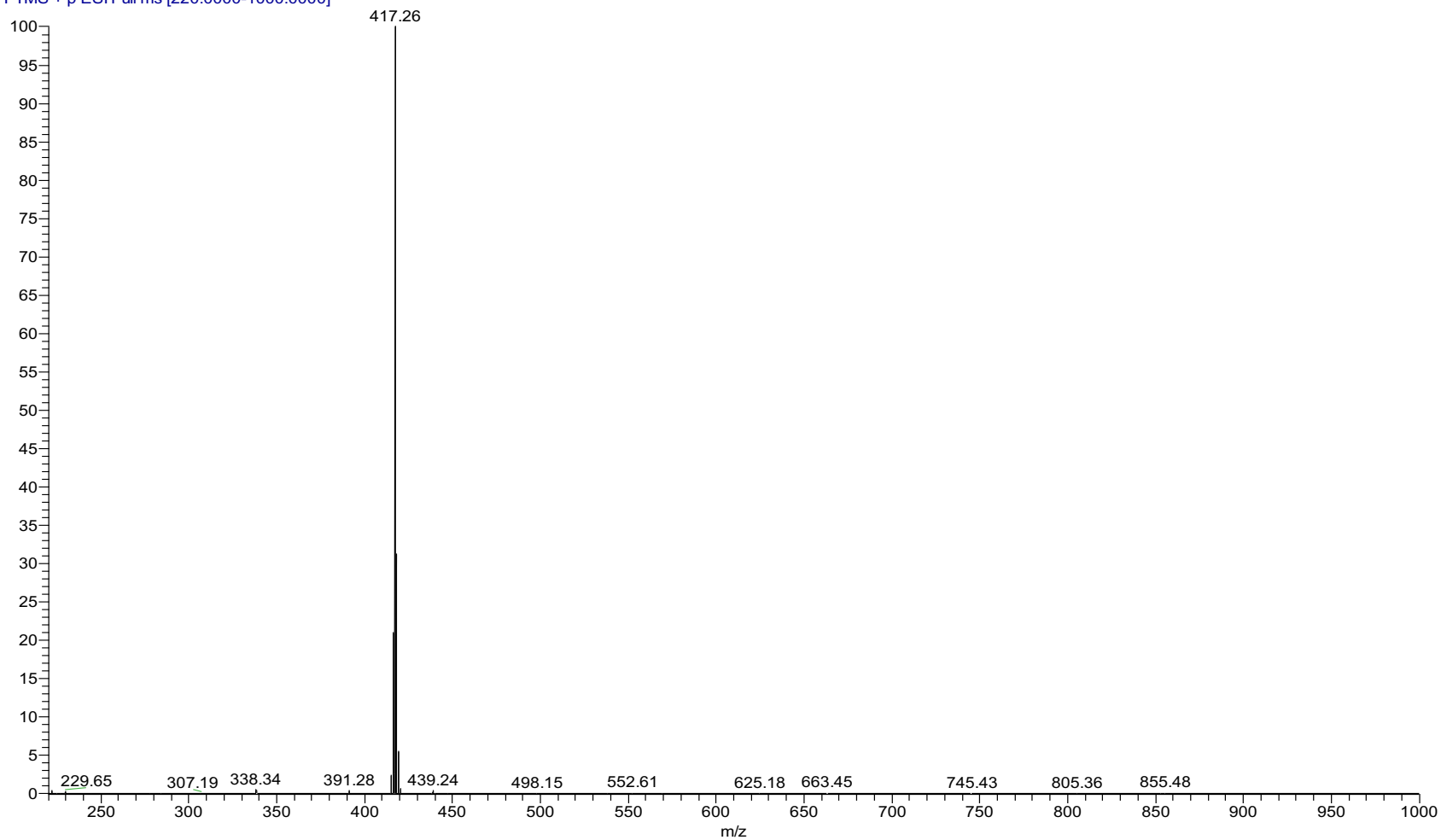
Date: 03/04/2020



Viorica Rusu, QC/QA Manager

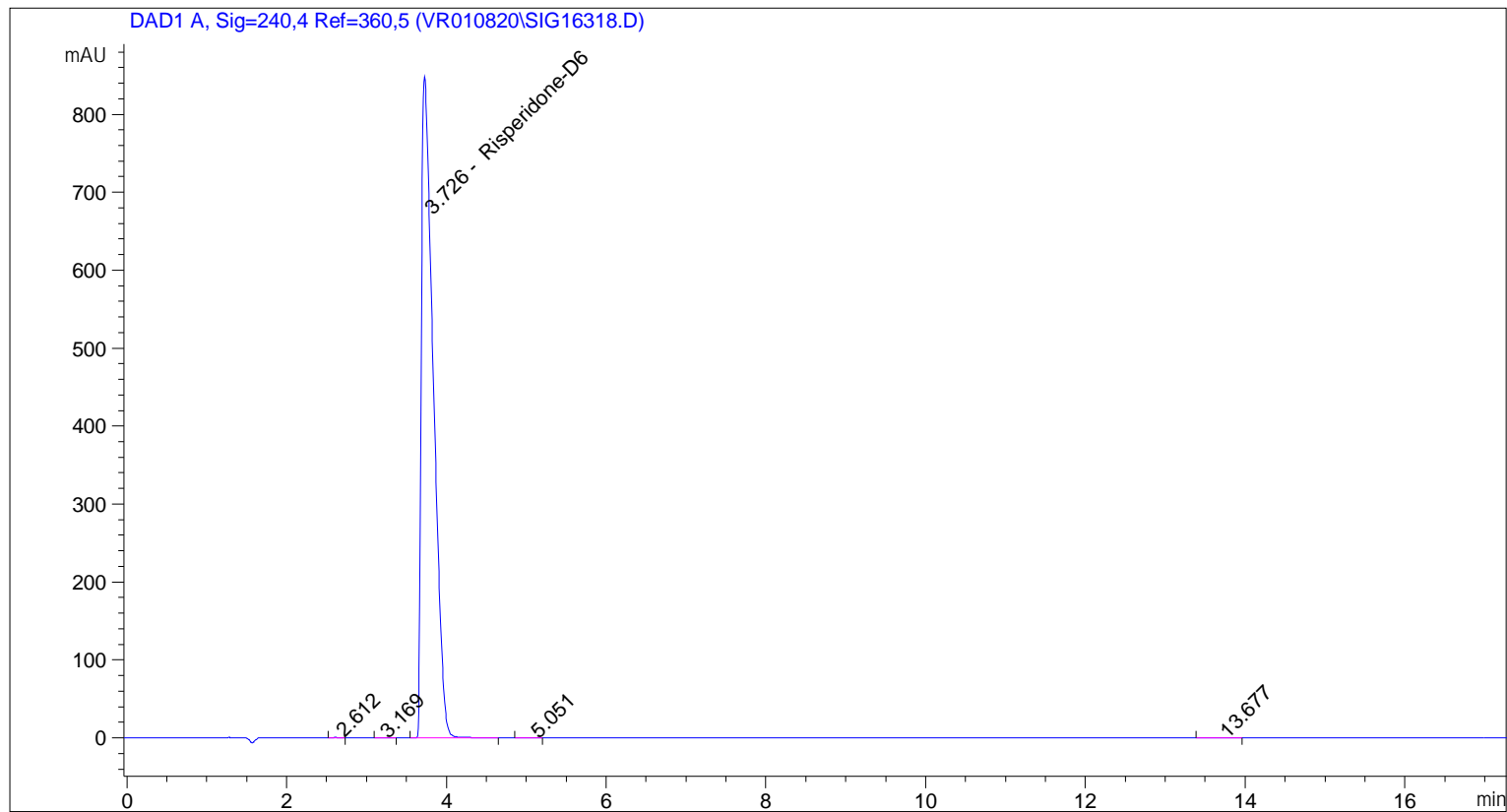


pp\_2021\_002\_GR\_3\_113\_1 #2185 RT: 4.91 AV: 1 NL: 8.67E8  
T: FTMS + p ESI Full ms [220.0000-1000.0000]



ESI-MS spectrum for sample GR-3-113. Shows monoisotopic  $[M+H]^+$  mass.

=====  
Acq. Operator : vrusu  
Acq. Instrument : Instrument 1 Location : Vial 49  
Injection Date : 3/4/2020 7:18:45 AM Inj Volume : 20.0 µl  
Acq. Method : C:\CHEM32\1\METHODS\VR030420\_113.M  
Last changed : 3/4/2020 7:16:57 AM by vrusu  
Analysis Method : C:\CHEM32\1\METHODS\VR030420\_113PM.M  
Last changed : 3/4/2020 12:32:06 PM by vrusu



=====  
Area Percent Report  
=====

Sorted By : Signal  
Calib. Data Modified : 3/4/2020 12:29:57 PM  
Multiplier: : 1.0000  
Dilution: : 1.0000  
Use Multiplier & Dilution Factor with ISTDs

Signal 1: DAD1 A, Sig=240,4 Ref=360,5

Peak #	RetTime [min]	Type	Width [min]	Area [mAU*s]	Area %	Name
1	2.612	BB	0.1061	2.98691	0.0338	?
2	3.169	BV	0.1166	1.37697	0.0156	?
3	3.726	BV	0.1593	8816.92090	99.8668	Risperidone-D6
4	5.051	BB	0.1111	1.24693	0.0141	?
5	13.677	BB	0.2350	6.14910	0.0696	?

Totals : 8828.68080

=====

\*\*\* End of Report \*\*\*