

Name: 7 α -Thio Spironolactone
Lot#: GR-15-197
Test Date: 02/01/2021 (re-test date: 02/01/2025)
CAS No.: 38753-76-6
MF: C₂₂H₃₀O₃S
MW: 374.54
Appearance: Off-white solid
Purity: 96.6% by HPLC (average of two sample preparations)
¹H-NMR: Conforms (contains a trace of MeOH)
MS-ESI (+) Conforms (shows peak at m/z = 375.26 [M+H]⁺)
Storage Store at -18°C in a dry place away from direct sunlight

Approved by:

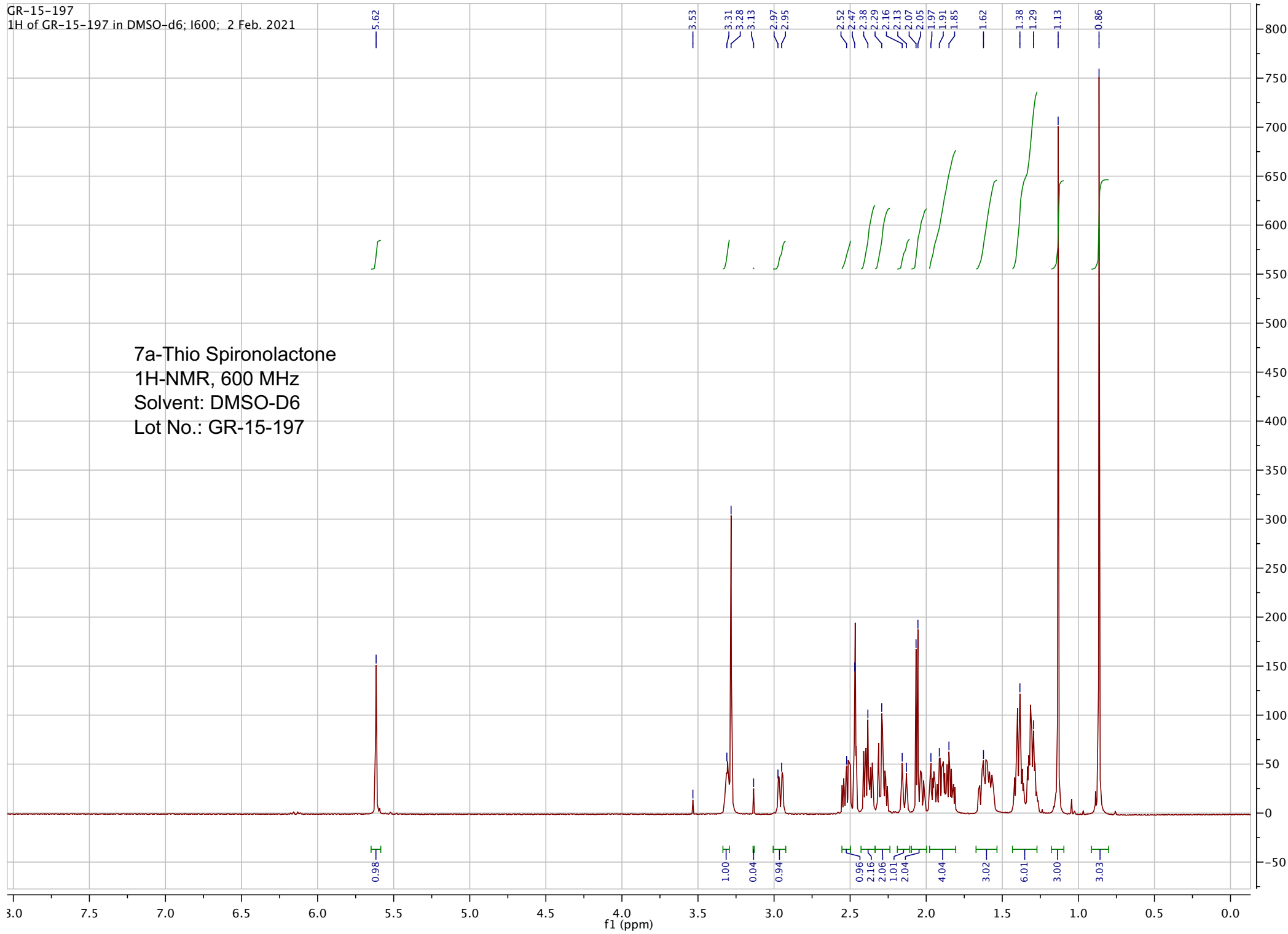
Date: 02/02/2021



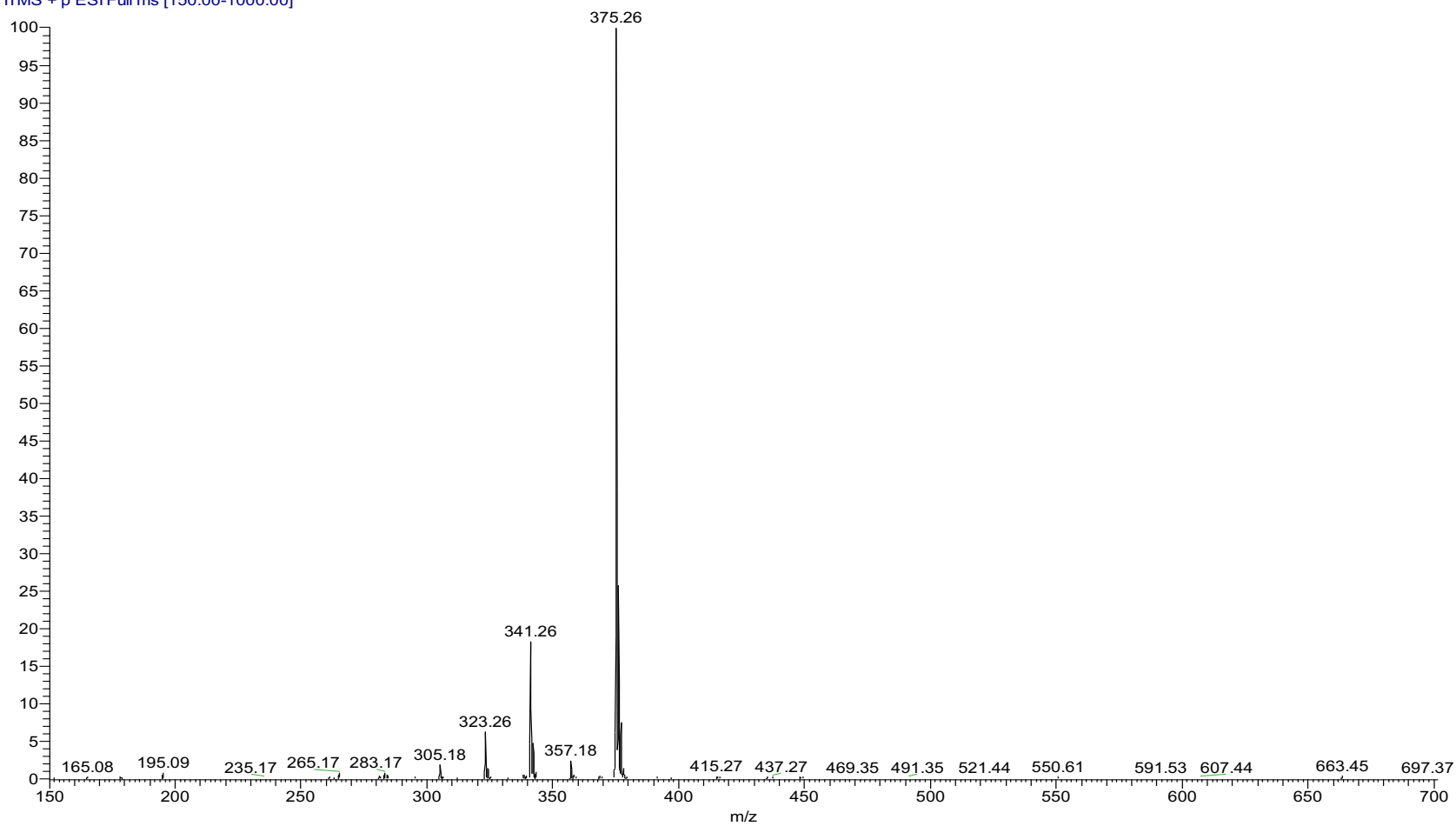
Viorica Rusu, QC/QA Manager

GR-15-197
1H of GR-15-197 in DMSO-d6; I600; 2 Feb. 2021

7a-Thio Spironolactone
1H-NMR, 600 MHz
Solvent: DMSO-D6
Lot No.: GR-15-197



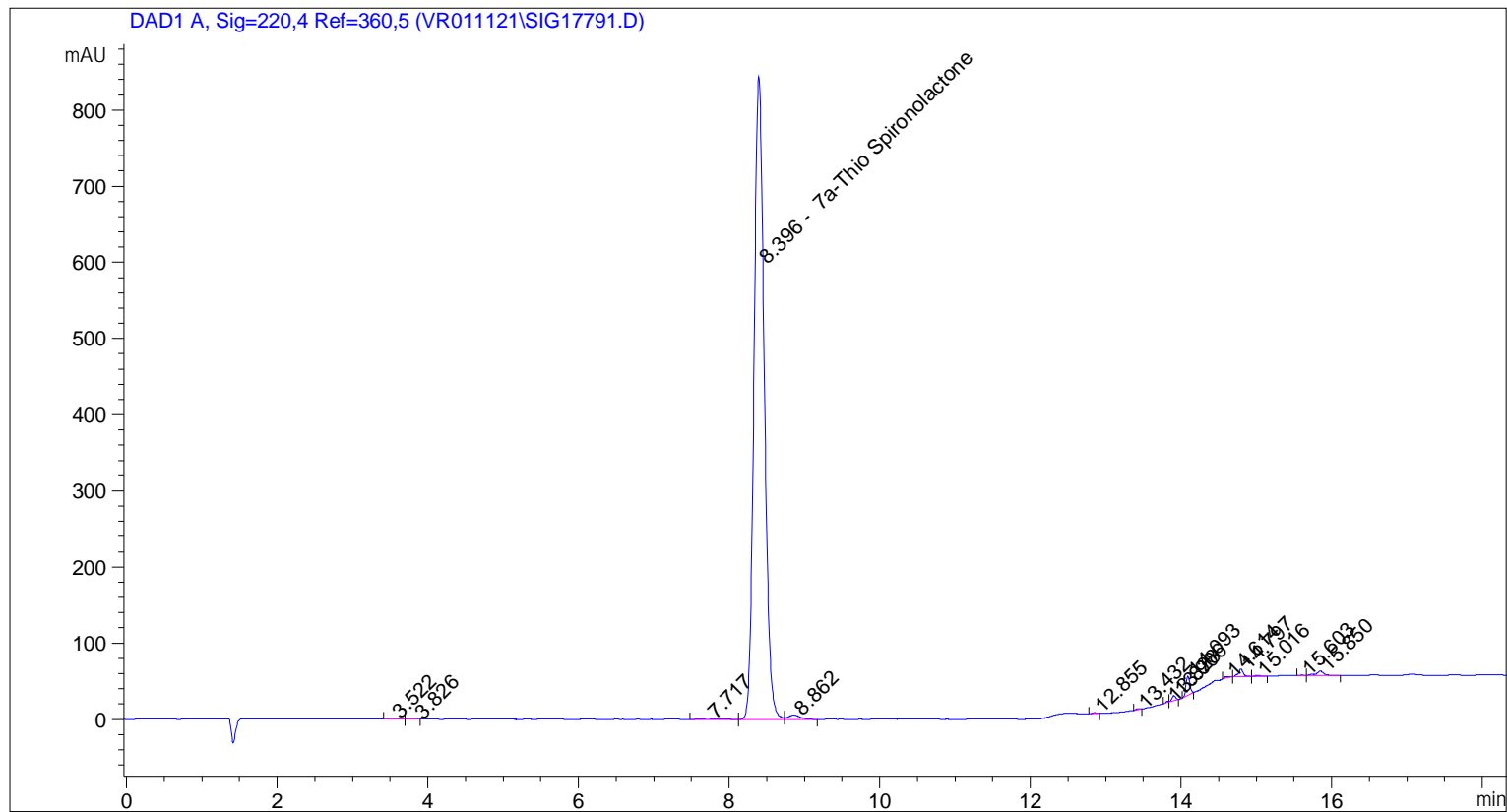
pp_2021_005_GR_15_197_001#1132 RT: 2.61 AV: 1 NL: 1.08E7
T: ITMS + p ESI Full ms [150.00-1000.00]



ESI-MS spectrum for sample GR-15-197. Shows monoisotopic $[M+H]^+$ mass.

```

=====
Acq. Operator   : vrusu
Acq. Instrument : Instrument 1                Location : Vial 19
Injection Date  : 2/1/2021 3:13:05 PM
                                           Inj Volume : 8.0 µl
Acq. Method     : C:\CHEM32\1\METHODS\VR020121_197.M
Last changed    : 2/1/2021 3:09:03 PM by vrusu
Analysis Method : C:\CHEM32\1\METHODS\VR020221_197PM.M
Last changed    : 2/2/2021 9:58:00 AM by vrusu
  
```



=====
 Area Percent Report
 =====

```

Sorted By           :      Signal
Calib. Data Modified :      2/2/2021 9:57:30 AM
Multiplier:         :      1.0000
Dilution:           :      1.0000
Use Multiplier & Dilution Factor with ISTDs
  
```

Signal 1: DAD1 A, Sig=220,4 Ref=360,5

Peak #	RetTime [min]	Type	Width [min]	Area [mAU*s]	Area %	Name
1	3.522	BB	0.0865	4.88827	0.0588	?
2	3.826	BB	0.0818	2.43964	0.0293	?
3	7.717	BB	0.1705	12.94361	0.1556	?
4	8.396	BV	0.1488	8010.13574	96.2990	7a-Thio Spironolactone
5	8.862	VB	0.1662	59.74710	0.7183	?
6	12.855	BB	0.0645	4.13795	0.0497	?
7	13.432	BB	0.0561	4.30081	0.0517	?
8	13.828	BV	0.0483	4.52933	0.0545	?

Sample Name: GR-15-197

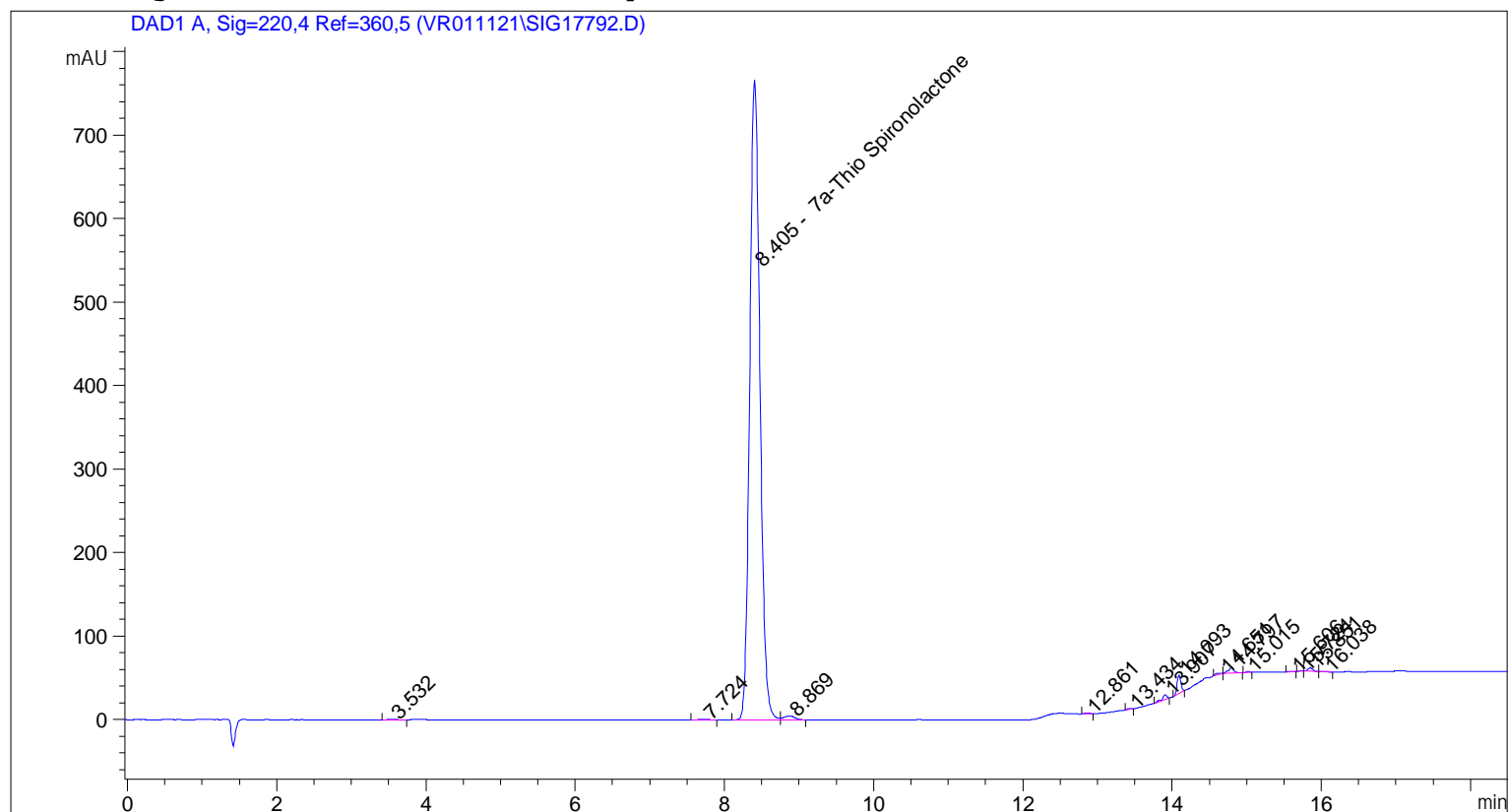
Peak #	RetTime [min]	Type	Width [min]	Area [mAU*s]	Area %	Name
9	13.906	VB	0.0554	22.50877	0.2706	?
10	14.093	BB	0.0547	89.16069	1.0719	?
11	14.614	BB	0.0725	9.09546	0.1093	?
12	14.797	BB	0.0678	46.53303	0.5594	?
13	15.016	BB	0.0613	5.64790	0.0679	?
14	15.603	BB	0.0551	1.56269	0.0188	?
15	15.850	BB	0.1025	40.35177	0.4851	?

Totals : 8317.98275

=====
*** End of Report ***

```

=====
Acq. Operator   : vrusu
Acq. Instrument : Instrument 1                Location : Vial 20
Injection Date  : 2/1/2021 3:38:36 PM
                                           Inj Volume : 8.0 µl
Acq. Method     : C:\CHEM32\1\METHODS\VR020121_197.M
Last changed    : 2/1/2021 3:33:20 PM by vrusu
Analysis Method : C:\CHEM32\1\METHODS\VR020221_197PM.M
Last changed    : 2/2/2021 9:58:00 AM by vrusu
  
```



=====
 Area Percent Report
 =====

```

Sorted By           :      Signal
Calib. Data Modified :      2/2/2021 9:57:30 AM
Multiplier:         :      1.0000
Dilution:           :      1.0000
Use Multiplier & Dilution Factor with ISTDs
  
```

Signal 1: DAD1 A, Sig=220,4 Ref=360,5

Peak #	RetTime [min]	Type	Width [min]	Area [mAU*s]	Area %	Name
1	3.532	BB	0.0916	5.61438	0.0747	?
2	7.724	BB	0.1182	8.74724	0.1165	?
3	8.405	BV	0.1465	7267.46533	96.7583	7a-Thio Spironolactone
4	8.869	VB	0.1536	47.24226	0.6290	?
5	12.861	BB	0.0670	3.32255	0.0442	?
6	13.434	BB	0.0545	3.85410	0.0513	?
7	13.907	BB	0.0617	23.35731	0.3110	?
8	14.093	BB	0.0545	76.46181	1.0180	?

Sample Name: GR-15-197 spl-2

Peak #	RetTime [min]	Type	Width [min]	Area [mAU*s]	Area %	Name
9	14.651	BB	0.1081	7.78686	0.1037	?
10	14.797	BB	0.0733	36.77665	0.4896	?
11	15.015	BB	0.0544	4.23708	0.0564	?
12	15.606	BB	0.0651	1.67333	0.0223	?
13	15.724	BB	0.0519	1.65076	0.0220	?
14	15.851	BB	0.0756	20.09218	0.2675	?
15	16.038	BB	0.0803	2.66369	0.0355	?

Totals : 7510.94555

=====
*** End of Report ***