

<b>Name:</b>	<b>Gestodene-3-methyldienol ether</b>
<b>Lot#:</b>	GR-16-029
<b>Test Date:</b>	05/24/2021 (re-test date: 05/24/2026)
<b>CAS No.:</b>	NA
<b>MF:</b>	C <sub>22</sub> H <sub>28</sub> O <sub>2</sub>
<b>MW:</b>	324.46
<b>Appearance:</b>	Pale yellow solid
<b>Purity:</b>	99.5% by HPLC (average of two sample preparations)
<b><sup>1</sup>H-NMR:</b>	Conforms (shows a trace of ACN)
<b>MS-ESI (+)</b>	Conforms (shows peak at m/z = 325.24 [M+H] <sup>+</sup> )
<b>Storage</b>	Store at -18°C in a dry place away from direct sunlight

Approved by:

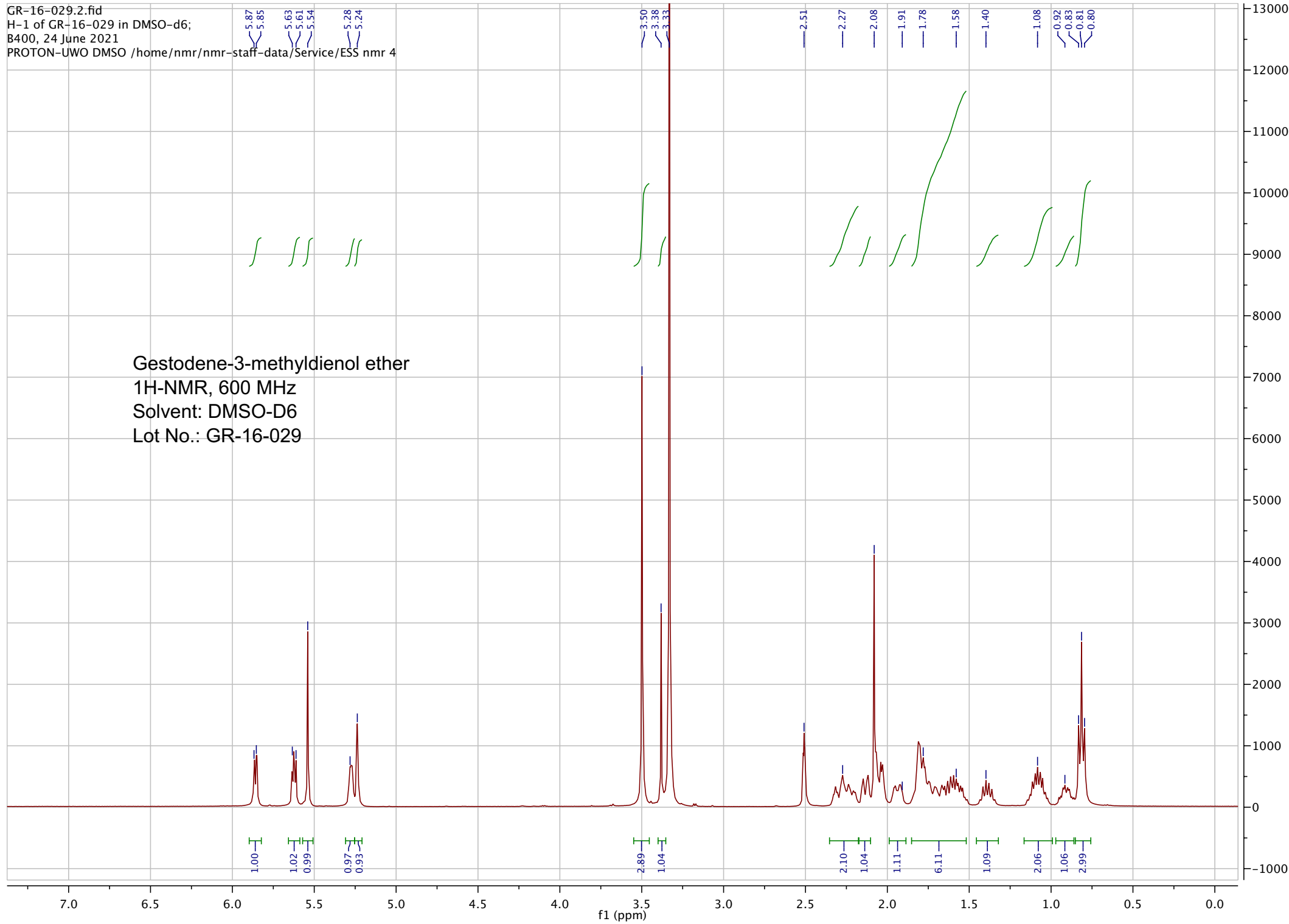
Date: 06/22/2021



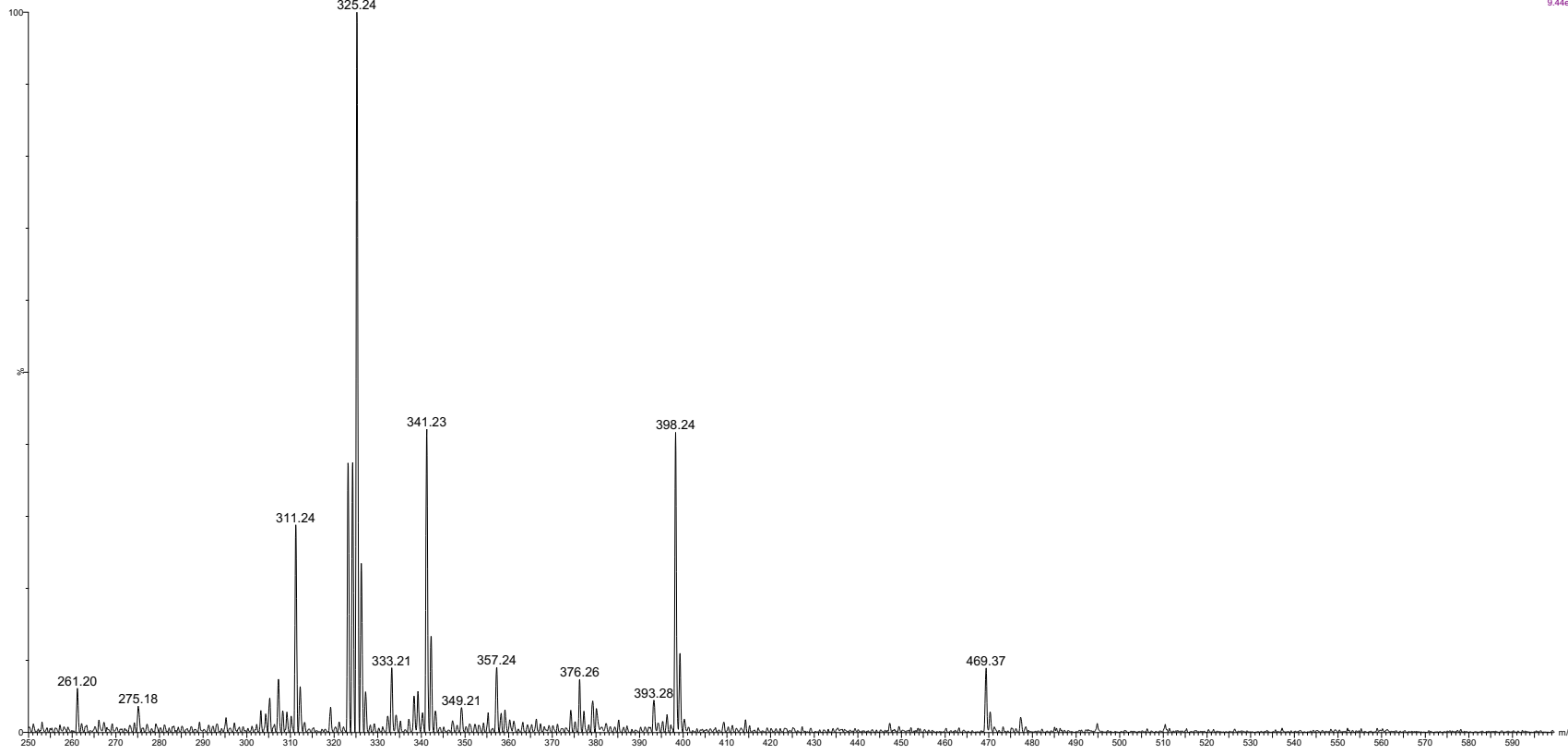
Viorica Rusu, QC/QA Manager

GR-16-029.2.fid  
H-1 of GR-16-029 in DMSO-d6;  
B400, 24 June 2021  
PROTON-UWO DMSO /home/nmr/nmr-staff-data/Service/ESS nmr 4

Gestodene-3-methyldienol ether  
1H-NMR, 600 MHz  
Solvent: DMSO-D6  
Lot No.: GR-16-029

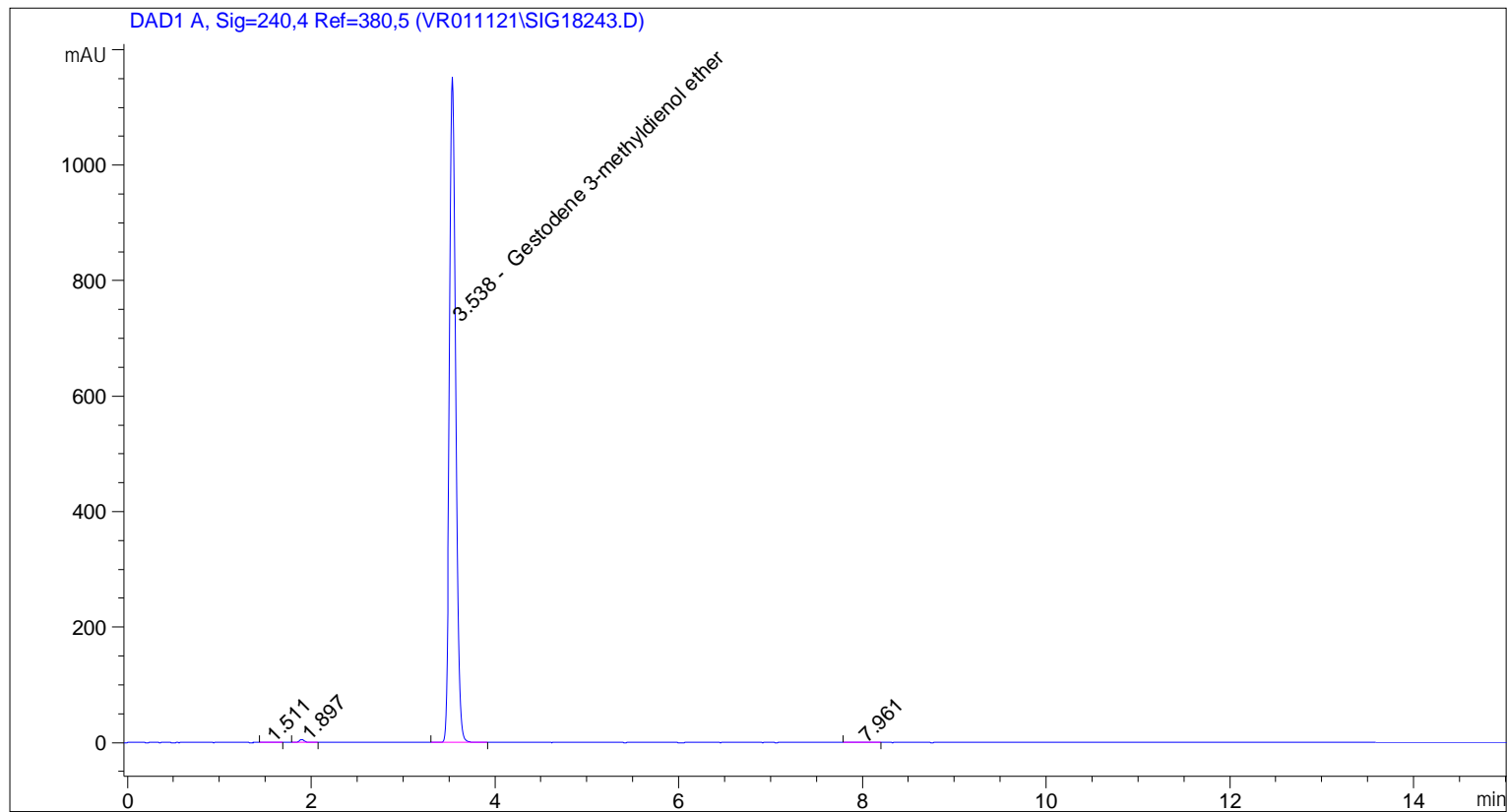


pp\_2021\_019\_GR\_16\_029\_1 16 (0.802) Sm (SG, 2x0.50); Sb (2,10.00); Cm (13.21)



ESI-MS spectrum for sample GR-16-029. Shows monoisotopic [M+H]<sup>+</sup> mass.

=====  
Acq. Operator : vrusu  
Acq. Instrument : Instrument 1 Location : Vial 18  
Injection Date : 5/24/2021 12:44:58 PM Inj Volume : 4.0 µl  
Acq. Method : C:\CHEM32\1\METHODS\VR052421\_029.M  
Last changed : 5/24/2021 12:44:19 PM by vrusu  
Analysis Method : C:\CHEM32\1\METHODS\VR052421\_029PM.M  
Last changed : 5/24/2021 1:22:44 PM by vrusu



=====  
Area Percent Report  
=====

Sorted By : Signal  
Calib. Data Modified : 5/24/2021 1:22:17 PM  
Multiplier: : 1.0000  
Dilution: : 1.0000  
Use Multiplier & Dilution Factor with ISTDs

Signal 1: DAD1 A, Sig=240,4 Ref=380,5

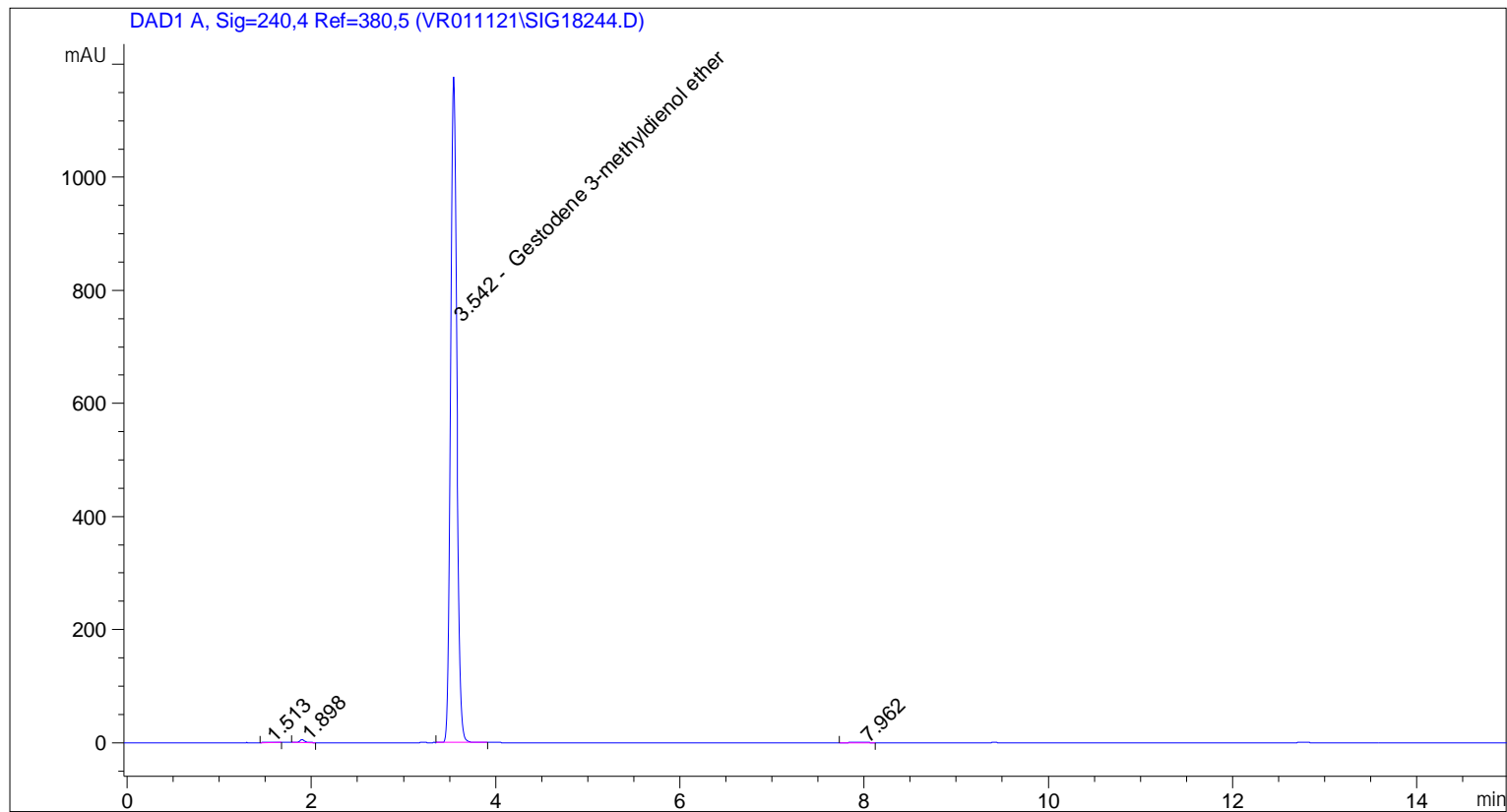
Peak #	RetTime [min]	Type	Width [min]	Area [mAU*s]	Area %	Name
1	1.511	BB	0.0688	2.82192	0.0507	?
2	1.897	BB	0.0601	20.03384	0.3601	?
3	3.538	BB	0.0740	5536.36328	99.5036	Gestodene 3-methyldienol ether
4	7.961	BB	0.1329	4.76221	0.0856	?

Totals : 5563.98125

=====

\*\*\* End of Report \*\*\*

=====  
Acq. Operator : vrusu  
Acq. Instrument : Instrument 1 Location : Vial 19  
Injection Date : 5/24/2021 1:01:39 PM Inj Volume : 4.0 µl  
Acq. Method : C:\CHEM32\1\METHODS\VR052421\_029.M  
Last changed : 5/24/2021 1:01:01 PM by vrusu  
Analysis Method : C:\CHEM32\1\METHODS\VR052421\_029PM.M  
Last changed : 5/24/2021 1:22:44 PM by vrusu



=====  
Area Percent Report  
=====

Sorted By : Signal  
Calib. Data Modified : 5/24/2021 1:22:17 PM  
Multiplier: : 1.0000  
Dilution: : 1.0000  
Use Multiplier & Dilution Factor with ISTDs

Signal 1: DAD1 A, Sig=240,4 Ref=380,5

Peak #	RetTime [min]	Type	Width [min]	Area [mAU*s]	Area %	Name
1	1.513	BB	0.0705	2.81444	0.0496	?
2	1.898	BB	0.0592	19.64703	0.3463	?
3	3.542	BB	0.0739	5645.99463	99.5236	Gestodene 3-methyldienol ether
4	7.962	BB	0.1272	4.56282	0.0804	?

Totals : 5673.01891

=====

\*\*\* End of Report \*\*\*