

Name: Gestodene Related Compound 10
Lot#: GR-16-067
Test Date: 07/22/2021 (re-test date: 07/22/2026)
CAS No.: 932388-88-0
MF: C₂₁H₂₆O₂
MW: 310.40
Appearance: Dark Yellow Solid
Purity: 98.8% by HPLC (average of two sample preparations)
¹H-NMR: Conforms (contains a trace of EtOAc)
MS-ESI (+) Conforms (shows peaks at m/z = 311.20 [M+H]⁺)
Storage Store at -18°C in a dry place away from direct sunlight

Approved by:

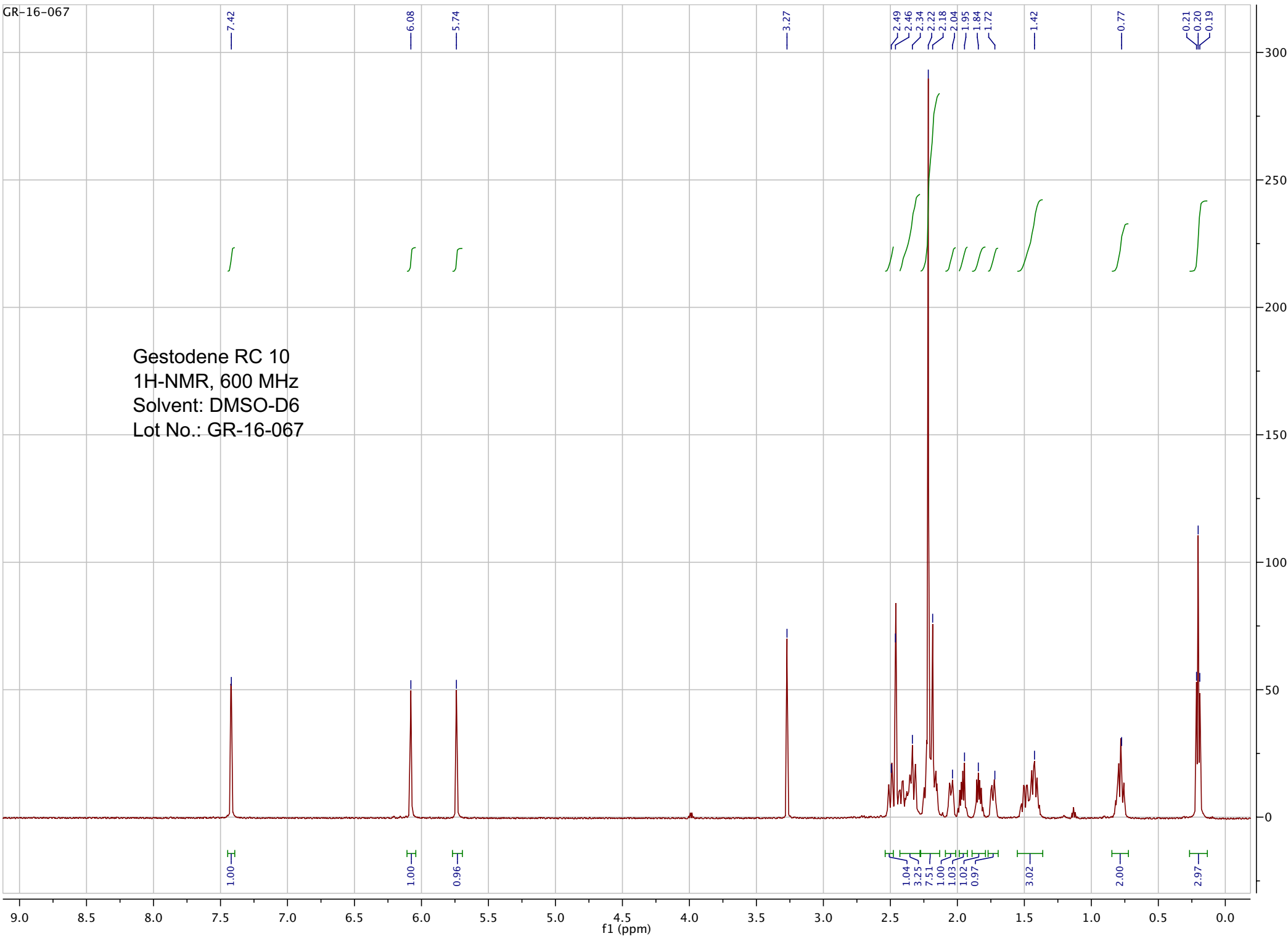
Date: 07/27/2021



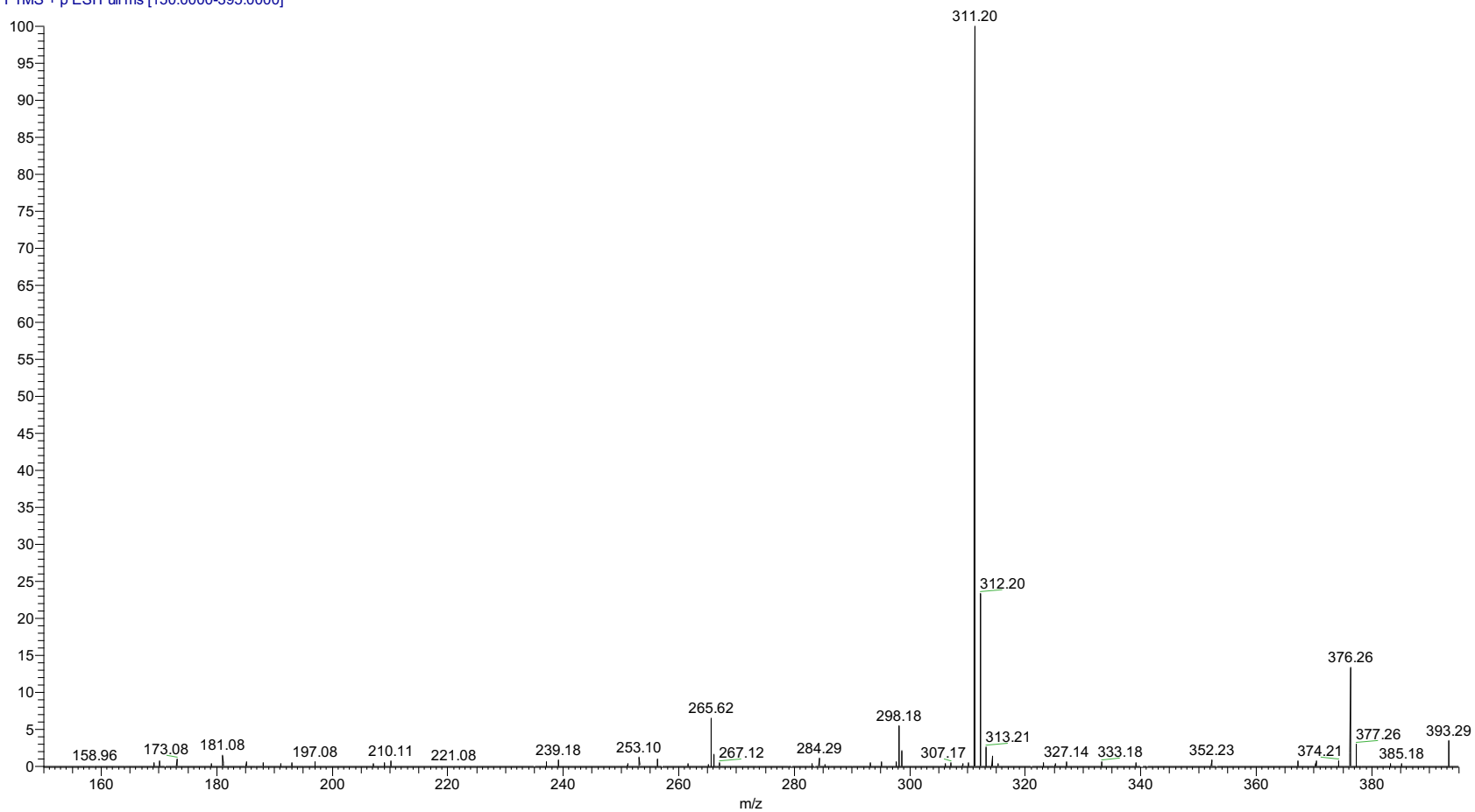
Viorica Rusu, QC/QA Manager

GR-16-067

Gestodene RC 10
1H-NMR, 600 MHz
Solvent: DMSO-D6
Lot No.: GR-16-067



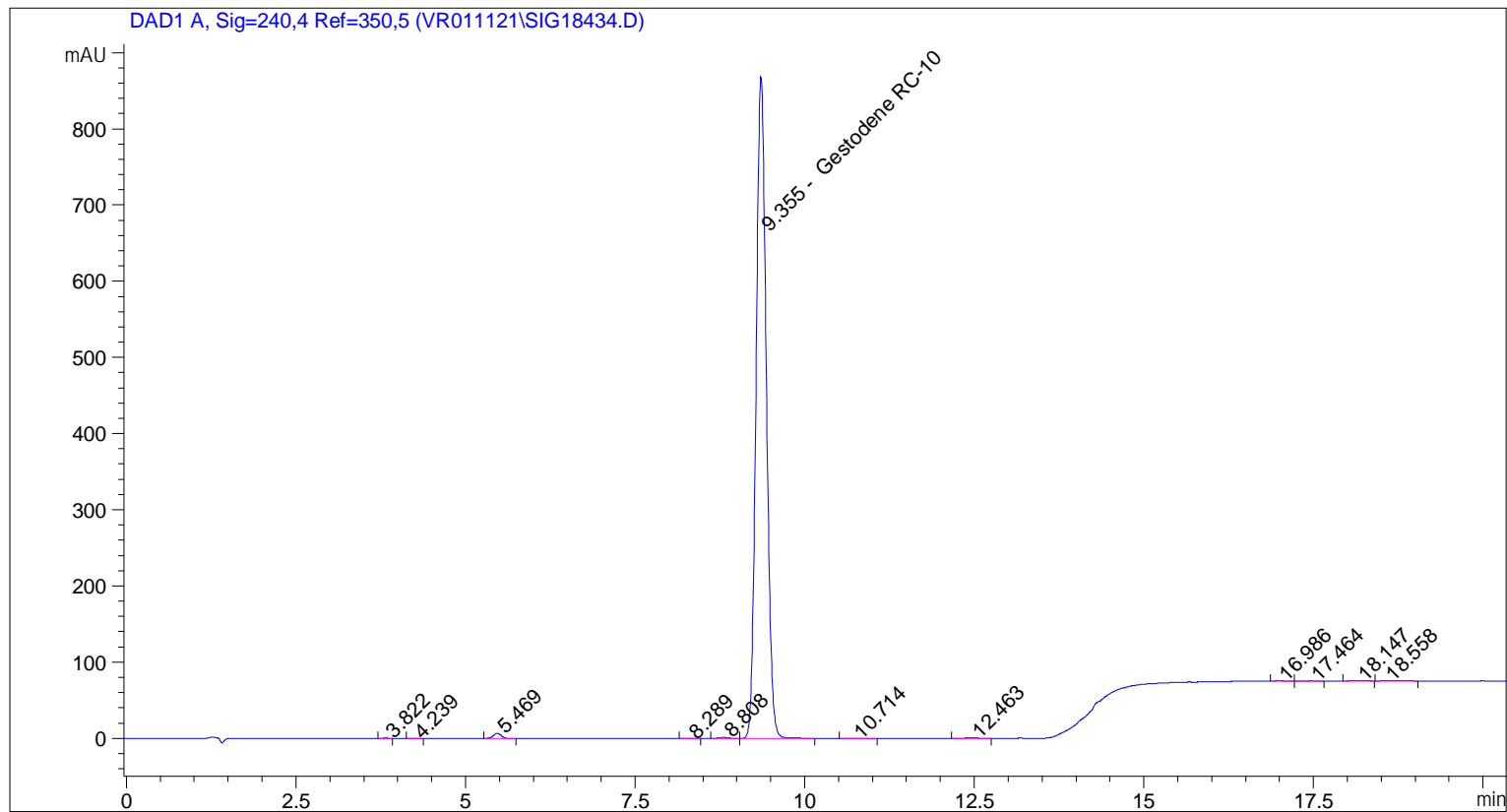
pp_2021_027_GR_16_067_1 #700 RT: 1.57 AV: 1 NL: 8.74E8
T: FTMS + p ESI Full ms [150.0000-395.0000]



ESI-MS spectrum for sample GR-16-067. Shows monoisotopic $[M+H]^+$ mass.

```

=====
Acq. Operator   : vrusu
Acq. Instrument : Instrument 1                Location : Vial 82
Injection Date  : 7/22/2021 2:19:44 PM
                                           Inj Volume : 10.0 µl
Acq. Method    : C:\CHEM32\1\METHODS\VR072221_067.M
Last changed   : 7/22/2021 2:18:31 PM by vrusu
Analysis Method: C:\CHEM32\1\METHODS\VR072221_067PM.M
Last changed   : 7/22/2021 4:00:39 PM by vrusu
  
```



=====
 Area Percent Report
 =====

```

Sorted By      :      Signal
Calib. Data Modified :      7/22/2021 3:59:16 PM
Multiplier:    :      1.0000
Dilution:     :      1.0000
Use Multiplier & Dilution Factor with ISTDs
  
```

Signal 1: DAD1 A, Sig=240,4 Ref=350,5

Peak #	RetTime [min]	Type	Width [min]	Area [mAU*s]	Area %	Name
1	3.822	BB	0.0890	3.00388	0.0324	?
2	4.239	BB	0.1130	3.81642	0.0412	?
3	5.469	BB	0.1240	54.30393	0.5862	?
4	8.289	BB	0.1287	2.82173	0.0305	?
5	8.808	BB	0.1568	13.56764	0.1465	?
6	9.355	BB	0.1628	9143.10352	98.6966	Gestodene RC-10
7	10.714	BB	0.1654	3.48825	0.0377	?
8	12.463	BB	0.1832	9.44319	0.1019	?

Sample Name: GR-16-067

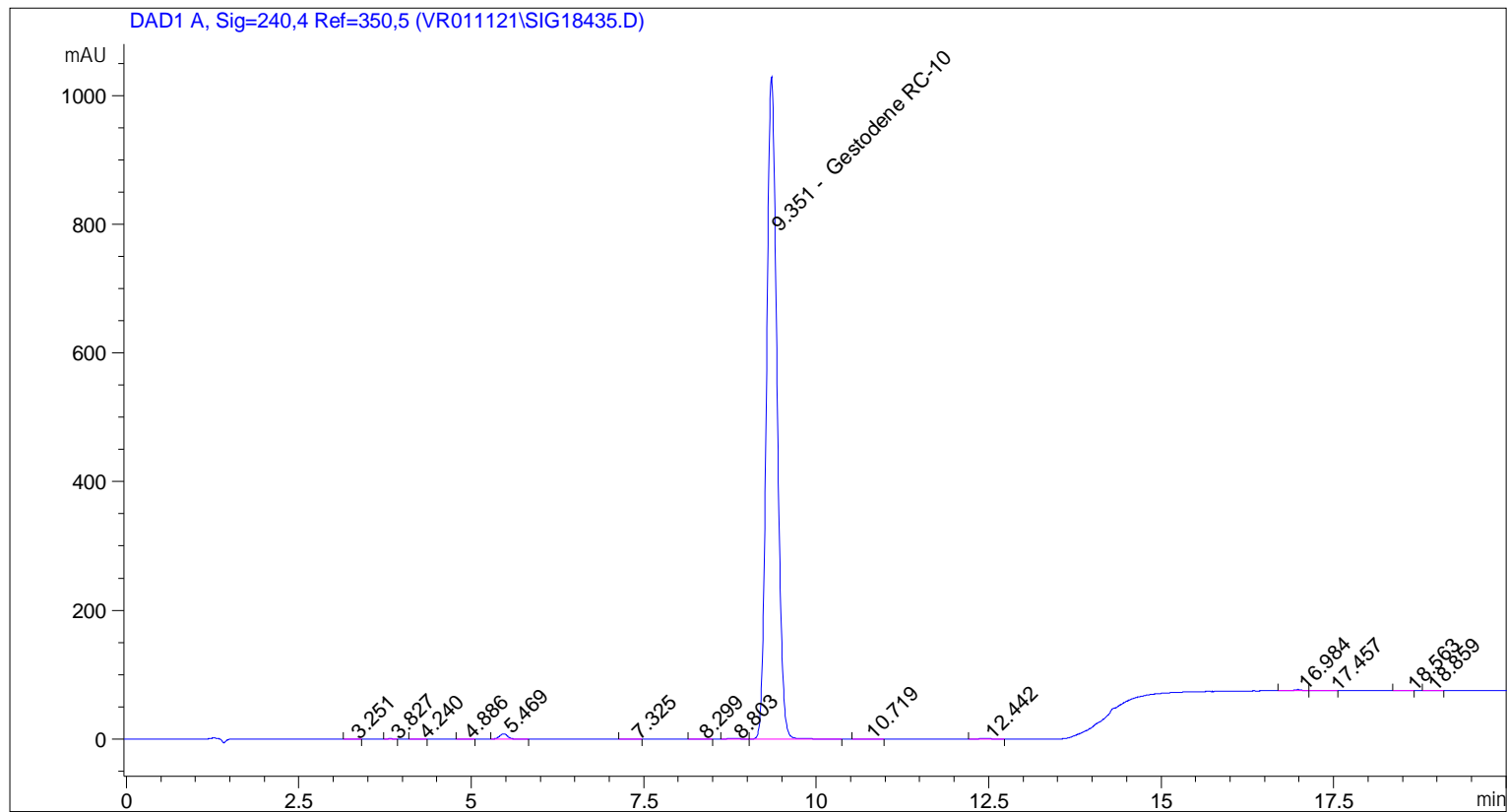
Peak #	RetTime [min]	Type	Width [min]	Area [mAU*s]	Area %	Name
9	16.986	BV	0.1061	10.29324	0.1111	?
10	17.464	VB	0.1475	4.57747	0.0494	?
11	18.147	BB	0.2031	6.88660	0.0743	?
12	18.558	BB	0.2769	8.54588	0.0922	?

Totals : 9263.85174

=====
*** End of Report ***

```

=====
Acq. Operator   : vrusu
Acq. Instrument : Instrument 1                Location : Vial 83
Injection Date  : 7/22/2021 2:44:06 PM
                                           Inj Volume : 10.0 µl
Acq. Method     : C:\CHEM32\1\METHODS\VR072221_067.M
Last changed    : 7/22/2021 2:42:51 PM by vrusu
Analysis Method : C:\CHEM32\1\METHODS\VR072221_067PM.M
Last changed    : 7/22/2021 4:00:39 PM by vrusu
  
```



=====
 Area Percent Report
 =====

```

Sorted By           :      Signal
Calib. Data Modified :      7/22/2021 3:59:16 PM
Multiplier:         :      1.0000
Dilution:           :      1.0000
Use Multiplier & Dilution Factor with ISTDs
  
```

Signal 1: DAD1 A, Sig=240,4 Ref=350,5

Peak #	RetTime [min]	Type	Width [min]	Area [mAU*s]	Area %	Name
1	3.251	BB	0.0826	1.62678	0.0148	?
2	3.827	BB	0.0789	3.07617	0.0279	?
3	4.240	BB	0.1239	4.24910	0.0386	?
4	4.886	BB	0.0916	2.03800	0.0185	?
5	5.469	BB	0.1241	67.01641	0.6088	?
6	7.325	BB	0.1388	2.49290	0.0226	?
7	8.299	BB	0.1204	2.97451	0.0270	?
8	8.803	BB	0.1551	15.05852	0.1368	?

Sample Name: GR-16-067 spl-2

Peak #	RetTime [min]	Type	Width [min]	Area [mAU*s]	Area %	Name
9	9.351	BB	0.1652	1.08725e4	98.7686	Gestodene RC-10
10	10.719	BB	0.1564	3.38294	0.0307	?
11	12.442	BB	0.1761	10.04181	0.0912	?
12	16.984	BB	0.1140	15.18335	0.1379	?
13	17.457	BB	0.1223	4.15985	0.0378	?
14	18.563	BV	0.1184	2.73823	0.0249	?
15	18.859	BB	0.0902	1.51863	0.0138	?

Totals : 1.10080e4

=====
*** End of Report ***