

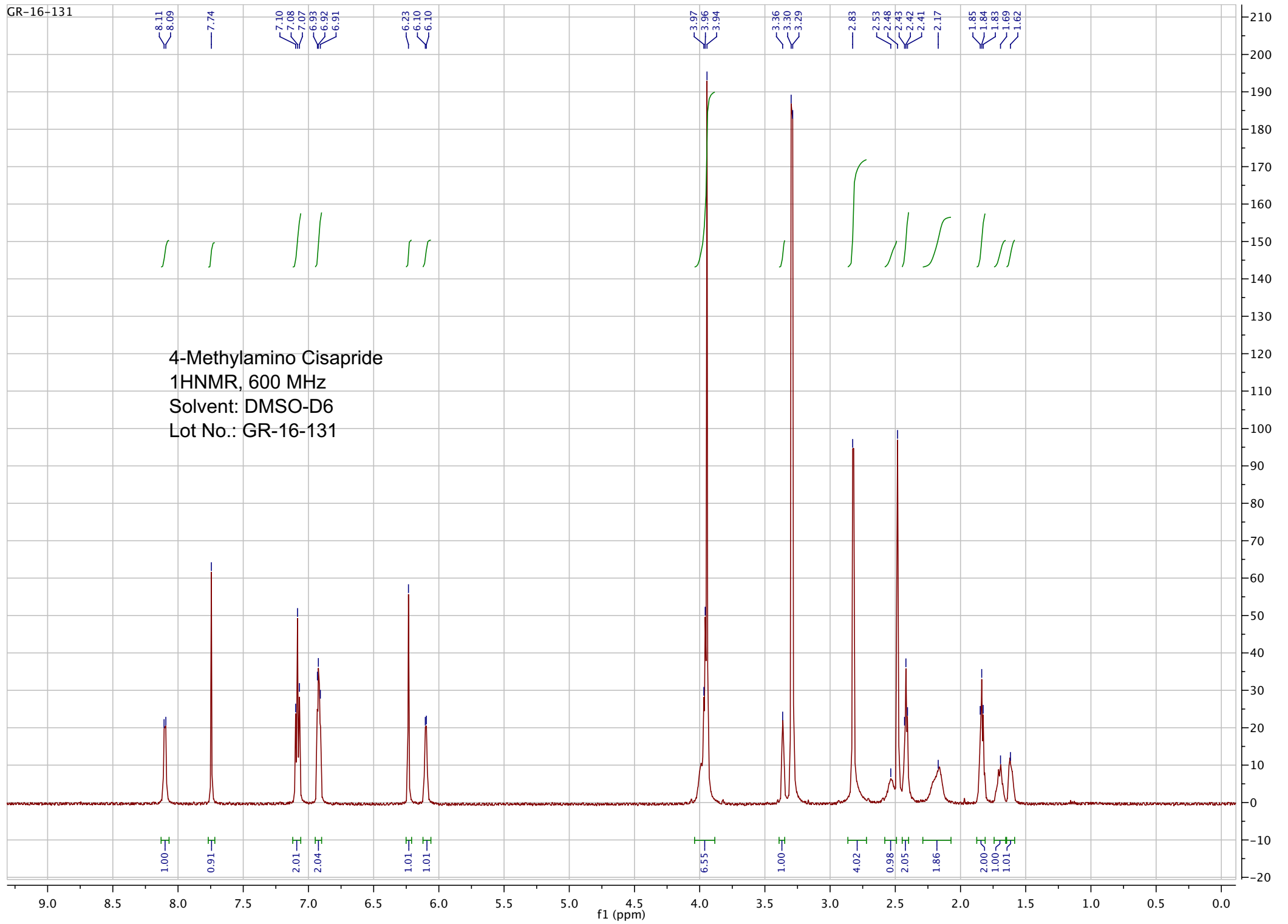
<b>Name:</b>	<b>4-Methylamino Cisapride</b>
<b>Lot#:</b>	GR-16-131
<b>Test Date:</b>	09/07/2021 (re-test date: 09/07/2026)
<b>CAS No.:</b>	NA
<b>MF:</b>	C <sub>24</sub> H <sub>31</sub> ClFN <sub>3</sub> O <sub>4</sub>
<b>MW:</b>	479.97
<b>Appearance:</b>	White solid
<b>Purity:</b>	99.3% by HPLC
<b><sup>1</sup>H-NMR:</b>	Conforms
<b>MS-ESI (+)</b>	Conforms (shows peak at m/z = 480.16 [M+H] <sup>+</sup> shows the expected pattern for mono-chloro compounds)
<b>Storage</b>	Store at 0-8°C in a dry place away from direct sunlight

Approved by:

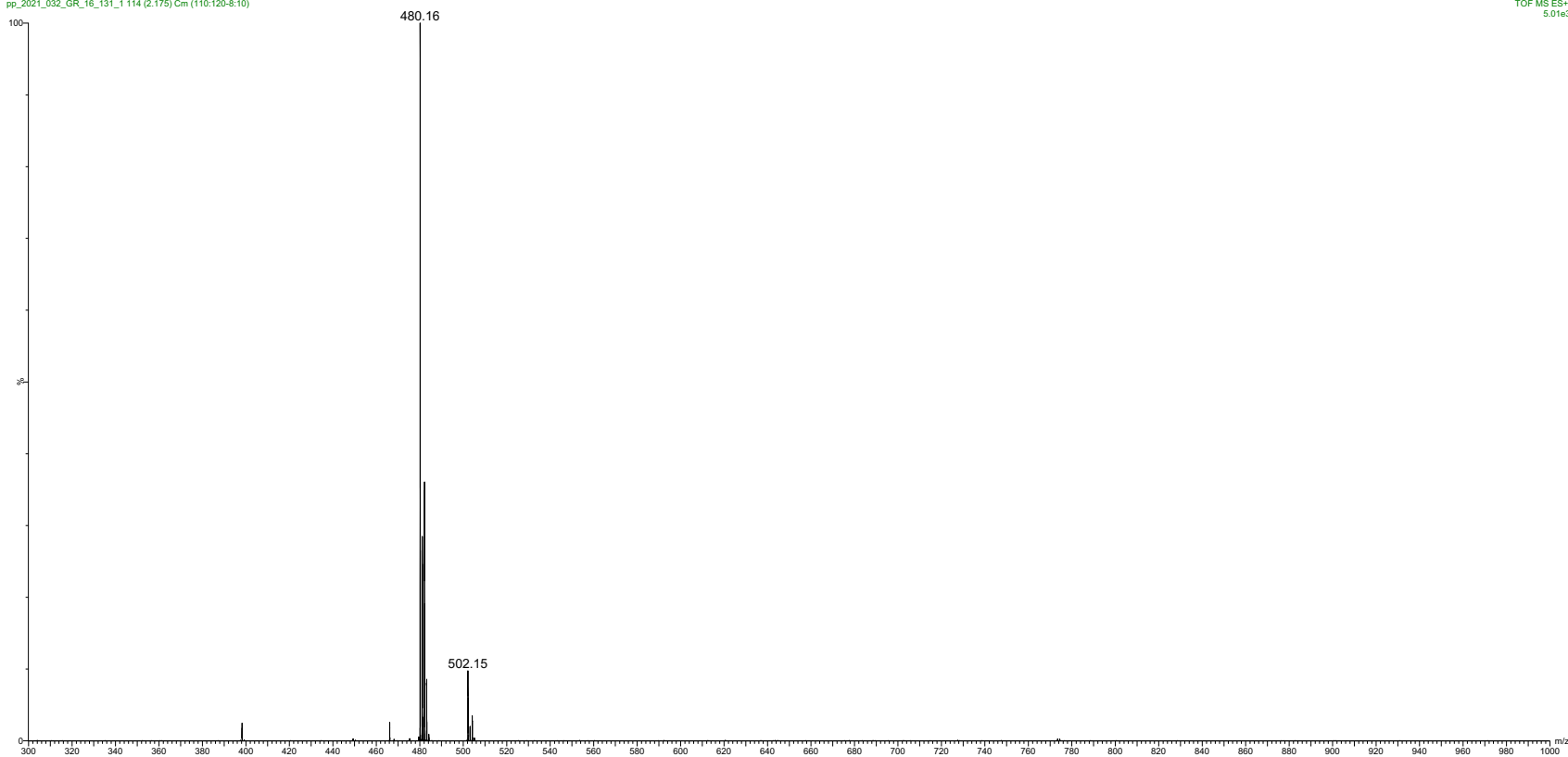
Date: 09/08/2021



Viorica Rusu, QC/QA Manager

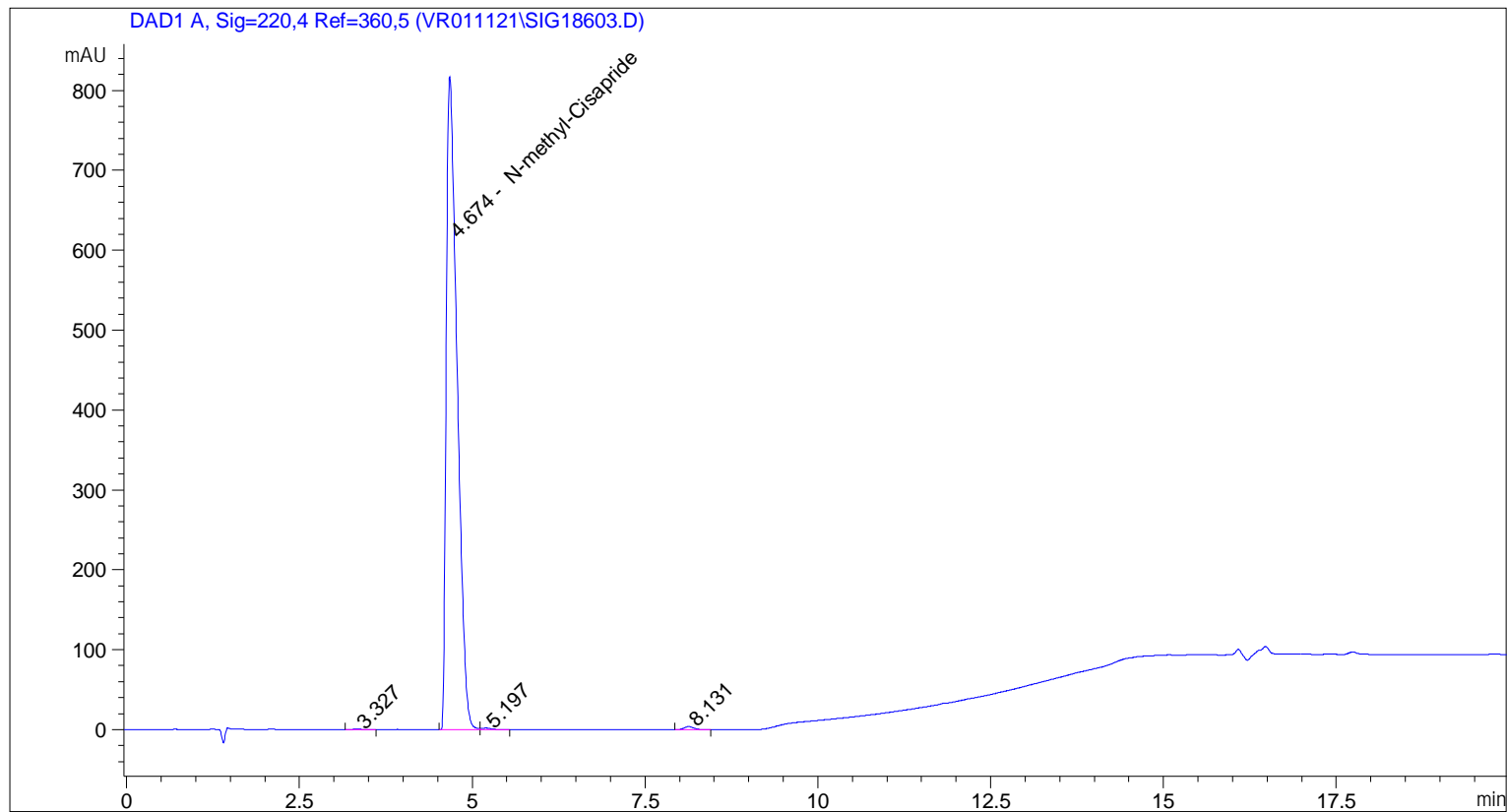


pp\_2021\_032\_GR\_16\_131\_1 114 (2.175) Cm (110:120-8:10)



ESI-MS spectrum for sample GR-16-131. Shows monoisotopic  $[M+H]^+$  mass.

=====  
Acq. Operator : vrusu  
Acq. Instrument : Instrument 1 Location : Vial 5  
Injection Date : 9/7/2021 1:32:54 PM Inj Volume : 5.0 µl  
Acq. Method : C:\CHEM32\1\METHODS\VR090721\_131.M  
Last changed : 9/7/2021 1:31:54 PM by vrusu  
Analysis Method : C:\CHEM32\1\METHODS\VR\_090721\_131PM.M  
Last changed : 9/7/2021 2:30:35 PM by vrusu



=====  
Area Percent Report  
=====

Sorted By : Signal  
Calib. Data Modified : 9/7/2021 2:23:50 PM  
Multiplier: : 1.0000  
Dilution: : 1.0000  
Use Multiplier & Dilution Factor with ISTDs

Signal 1: DAD1 A, Sig=220,4 Ref=360,5

Peak #	RetTime [min]	Type	Width [min]	Area [mAU*s]	Area %	Name
1	3.327	BB	0.1117	8.07220	0.0896	?
2	4.674	BV	0.1696	8940.06152	99.2670	N-methyl-Cisapride
3	5.197	VB	0.1460	19.29818	0.2143	?
4	8.131	BB	0.1485	38.64269	0.4291	?

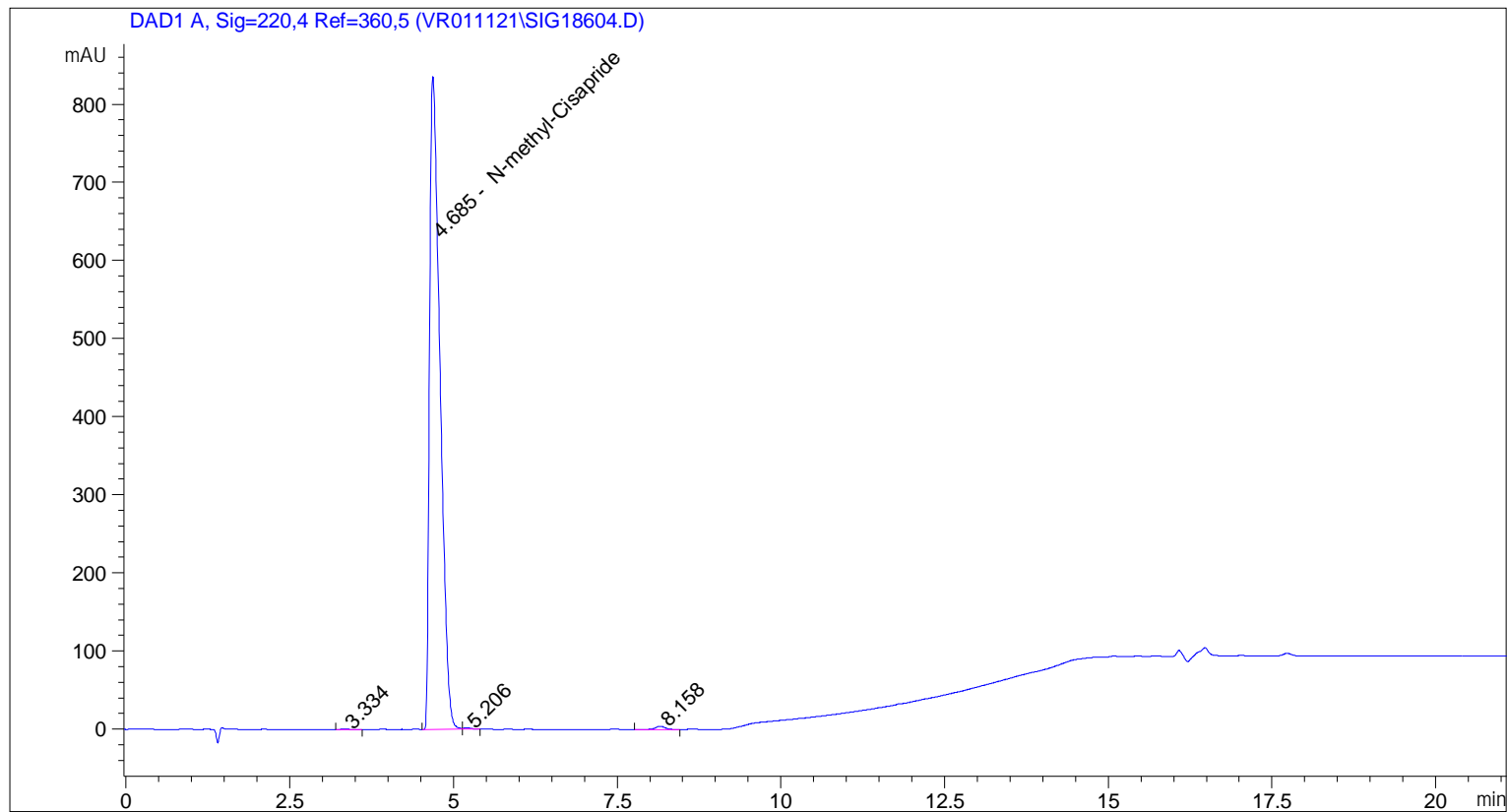
Totals : 9006.07459

=====

\*\*\* End of Report \*\*\*

```

=====
Acq. Operator   : vrusu
Acq. Instrument : Instrument 1                Location : Vial 6
Injection Date  : 9/7/2021 2:00:40 PM
                                           Inj Volume : 5.0 µl
Acq. Method     : C:\CHEM32\1\METHODS\VR090721_131.M
Last changed    : 9/7/2021 1:59:39 PM by vrusu
Analysis Method : C:\CHEM32\1\METHODS\VR_090721_131PM.M
Last changed    : 9/7/2021 2:30:35 PM by vrusu
  
```



=====  
 Area Percent Report  
 =====

```

Sorted By           :      Signal
Calib. Data Modified :      9/7/2021 2:23:50 PM
Multiplier:         :      1.0000
Dilution:           :      1.0000
Use Multiplier & Dilution Factor with ISTDs
  
```

Signal 1: DAD1 A, Sig=220,4 Ref=360,5

Peak #	RetTime [min]	Type	Width [min]	Area [mAU*s]	Area %	Name
1	3.334	BB	0.0859	3.50475	0.0375	?
2	4.685	VV	0.1717	9291.22656	99.3304	N-methyl-Cisapride
3	5.206	VB	0.1287	15.82362	0.1692	?
4	8.158	BB	0.1565	43.30514	0.4630	?

Totals : 9353.86007

=====

\*\*\* End of Report \*\*\*