

Name:	21-Methoxy Flunisolide
Lot#:	GR-16-239
Test Date:	11/24/2021 (re-test date: 11/24/2026)
CAS No.:	NA
MF:	C ₂₅ H ₃₃ FO ₇
MW:	464.52
Appearance:	White solid
Purity:	99.7% by HPLC (average of two sample preparations)
¹H-NMR:	Conforms shows a 4:1 mixture of diastereomers (contains ~one molecule of MeOH as solvate)
MS-ESI (+)	Conforms (shows peaks at m/z = 465.18 [M+H] ⁺ , 487.18 [M+Na] ⁺)
Storage	Store at -18°C in a dry place away from direct sunlight

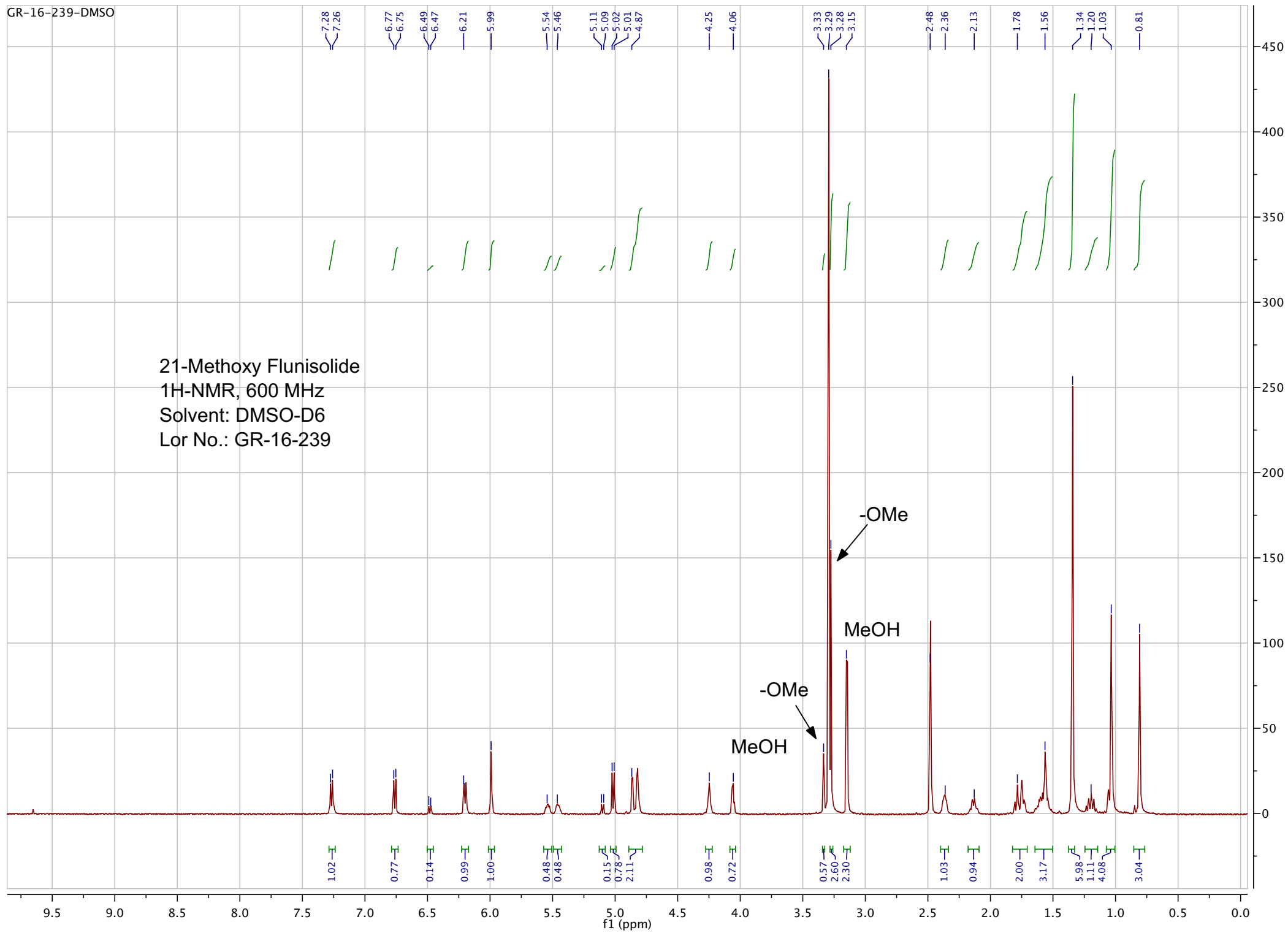
Approved by:

Date: 11/25/2021

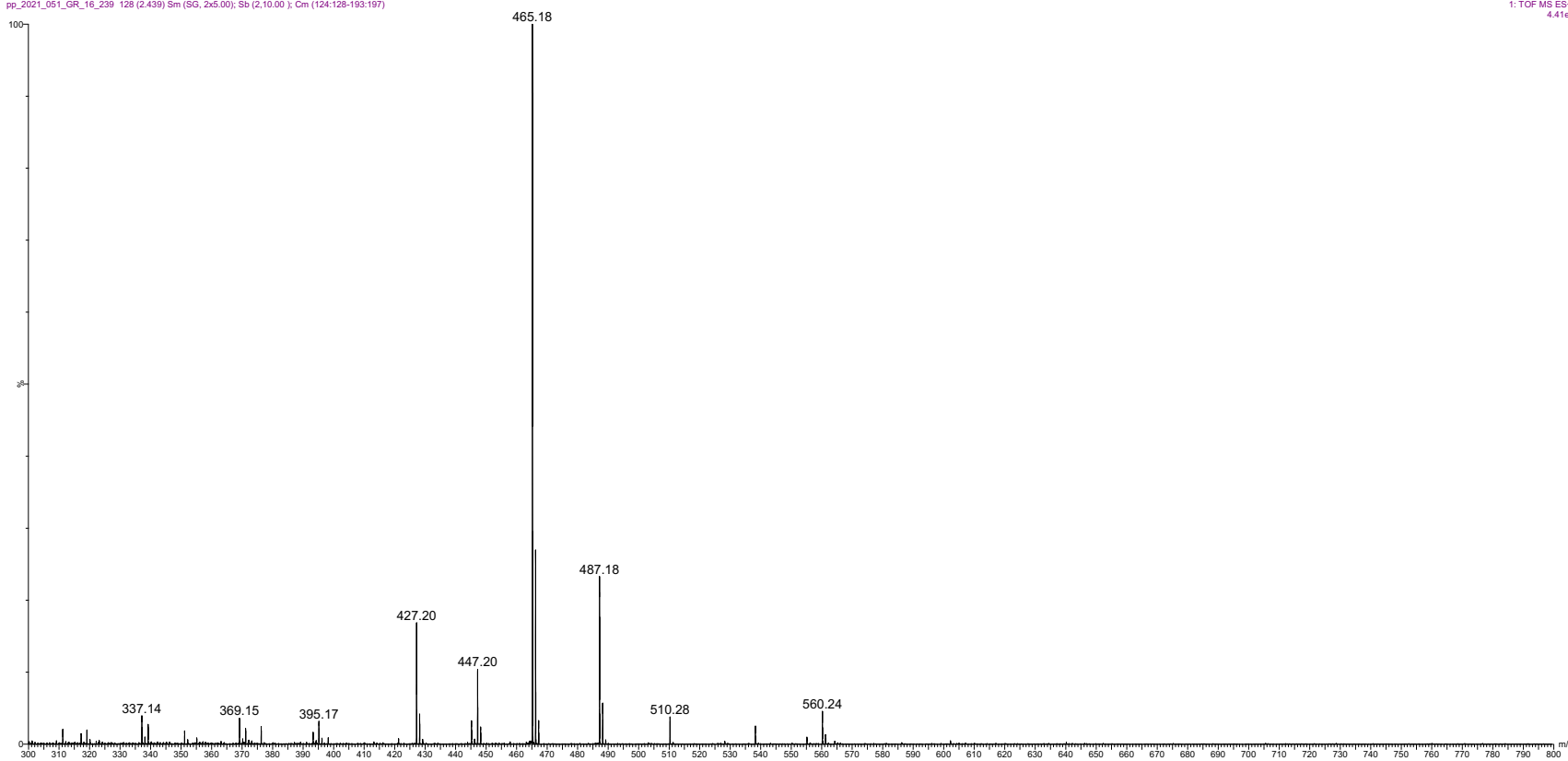


Viorica Rusu, QC/QA Manager

21-Methoxy Flunisolid
1H-NMR, 600 MHz
Solvent: DMSO-D6
Lor No.: GR-16-239

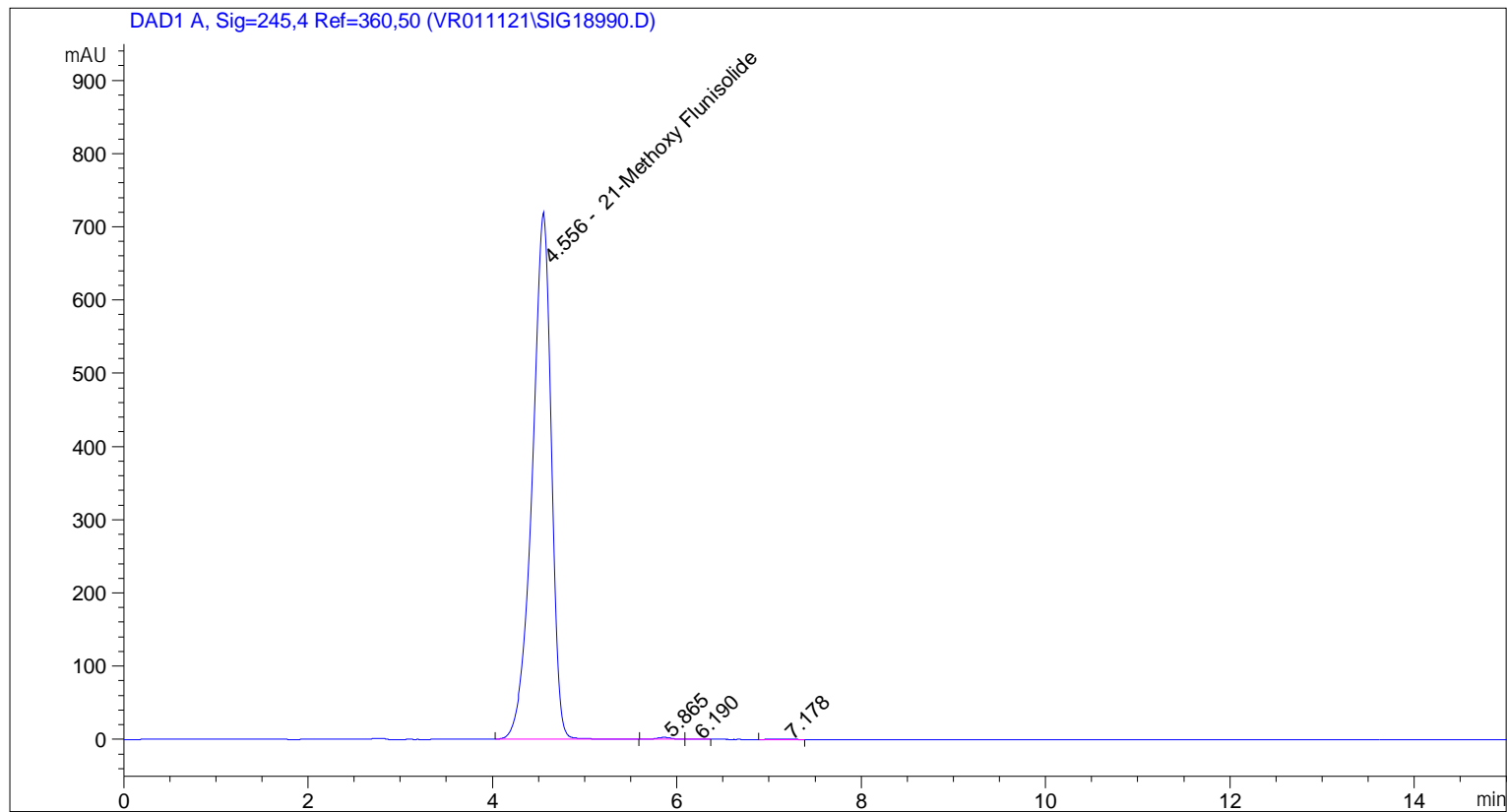


pp_2021_051_GR_16_239 128 (2.439) Sm (SG, 2x5.00); Sb (2,10.00); Cm (124:128-193:197)



ESI-MS spectrum for sample GR-16-239. Shows monoisotopic $[M+H]^+$ mass. Sample dissolved in 100% methanol and run in 100% methanol.

=====
Acq. Operator : vrusu
Acq. Instrument : Instrument 1 Location : Vial 89
Injection Date : 11/24/2021 12:42:15 PM Inj Volume : 10.0 µl
Acq. Method : C:\CHEM32\1\METHODS\VR112421_239.M
Last changed : 11/24/2021 12:41:05 PM by vrusu
Analysis Method : C:\CHEM32\1\METHODS\VR112421_239PM.M
Last changed : 11/24/2021 1:40:31 PM by vrusu



=====
Area Percent Report
=====

Sorted By : Signal
Calib. Data Modified : 11/24/2021 1:39:51 PM
Multiplier: : 1.0000
Dilution: : 1.0000
Use Multiplier & Dilution Factor with ISTDs

Signal 1: DAD1 A, Sig=245,4 Ref=360,50

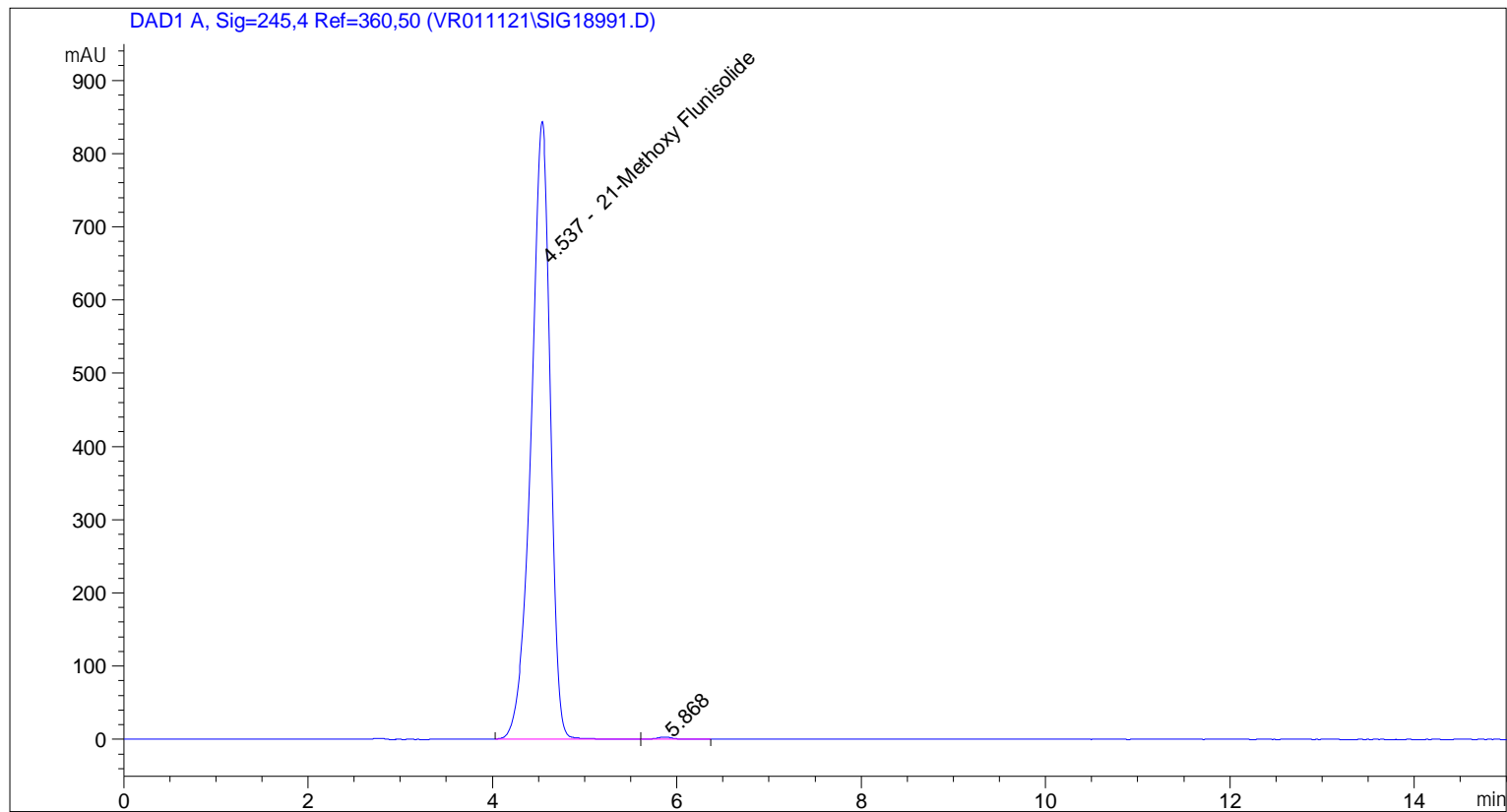
Peak #	RetTime [min]	Type	Width [min]	Area [mAU*s]	Area %	Name
1	4.556	BB	0.2175	1.03264e4	99.6912	21-Methoxy Flunisolide
2	5.865	BV	0.1670	29.03304	0.2803	?
3	6.190	VB	0.1303	1.80402	0.0174	?
4	7.178	BB	0.2043	1.15414	0.0111	?

Totals : 1.03584e4

=====

*** End of Report ***

=====
Acq. Operator : vrusu
Acq. Instrument : Instrument 1 Location : Vial 90
Injection Date : 11/24/2021 1:00:16 PM Inj Volume : 10.0 µl
Acq. Method : C:\CHEM32\1\METHODS\VR112421_239.M
Last changed : 11/24/2021 12:59:06 PM by vrusu
Analysis Method : C:\CHEM32\1\METHODS\VR112421_239PM.M
Last changed : 11/24/2021 1:40:31 PM by vrusu



=====
Area Percent Report
=====

Sorted By : Signal
Calib. Data Modified : 11/24/2021 1:39:51 PM
Multiplier: : 1.0000
Dilution: : 1.0000
Use Multiplier & Dilution Factor with ISTDs

Signal 1: DAD1 A, Sig=245,4 Ref=360,50

Peak #	RetTime [min]	Type	Width [min]	Area [mAU*s]	Area %	Name
1	4.537	BV	0.2181	1.21560e4	99.7119	21-Methoxy Flunisolide
2	5.868	VB	0.1759	35.12014	0.2881	?

Totals : 1.21911e4

=====
*** End of Report ***