

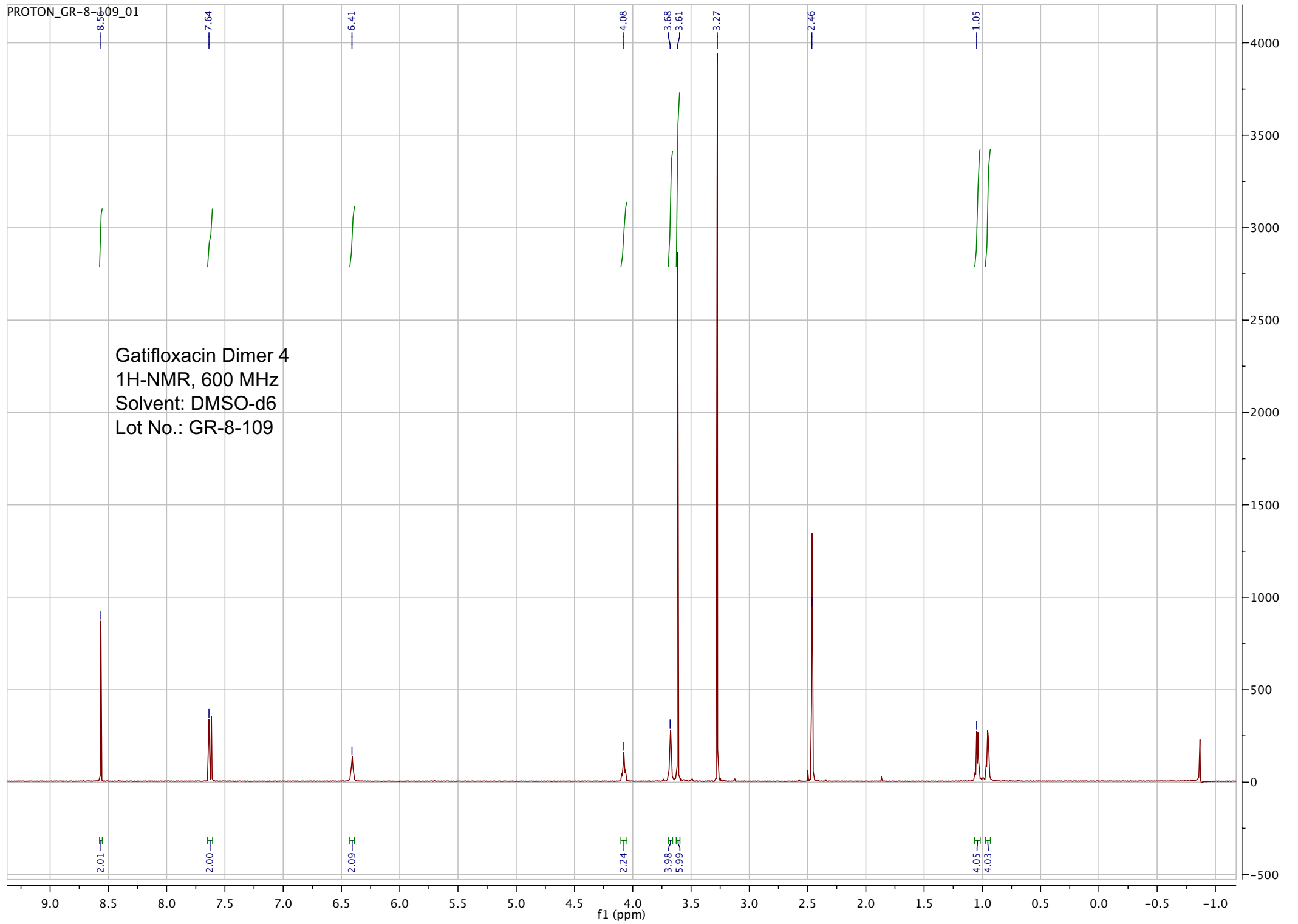
Name:	Gatifloxacin Dimer 4
Lot#:	GR-8-109
Test Date:	02/25/2021 (re-test date: 02/25/2026)
CAS No.:	1497338-53-0
MF:	C ₃₀ H ₂₈ F ₂ N ₄ O ₈
MW:	610.57
Appearance:	Yellow solid
Purity:	98.7% by HPLC (average of two sample preparations)
¹H-NMR:	Conforms
MS-ESI (+)	Conforms (shows peak at m/z = 611.15 [M+H] ⁺)
Storage	Store at 0-5°C in a dry place away from direct sunlight

Approved by:

Date: 02/25/2021



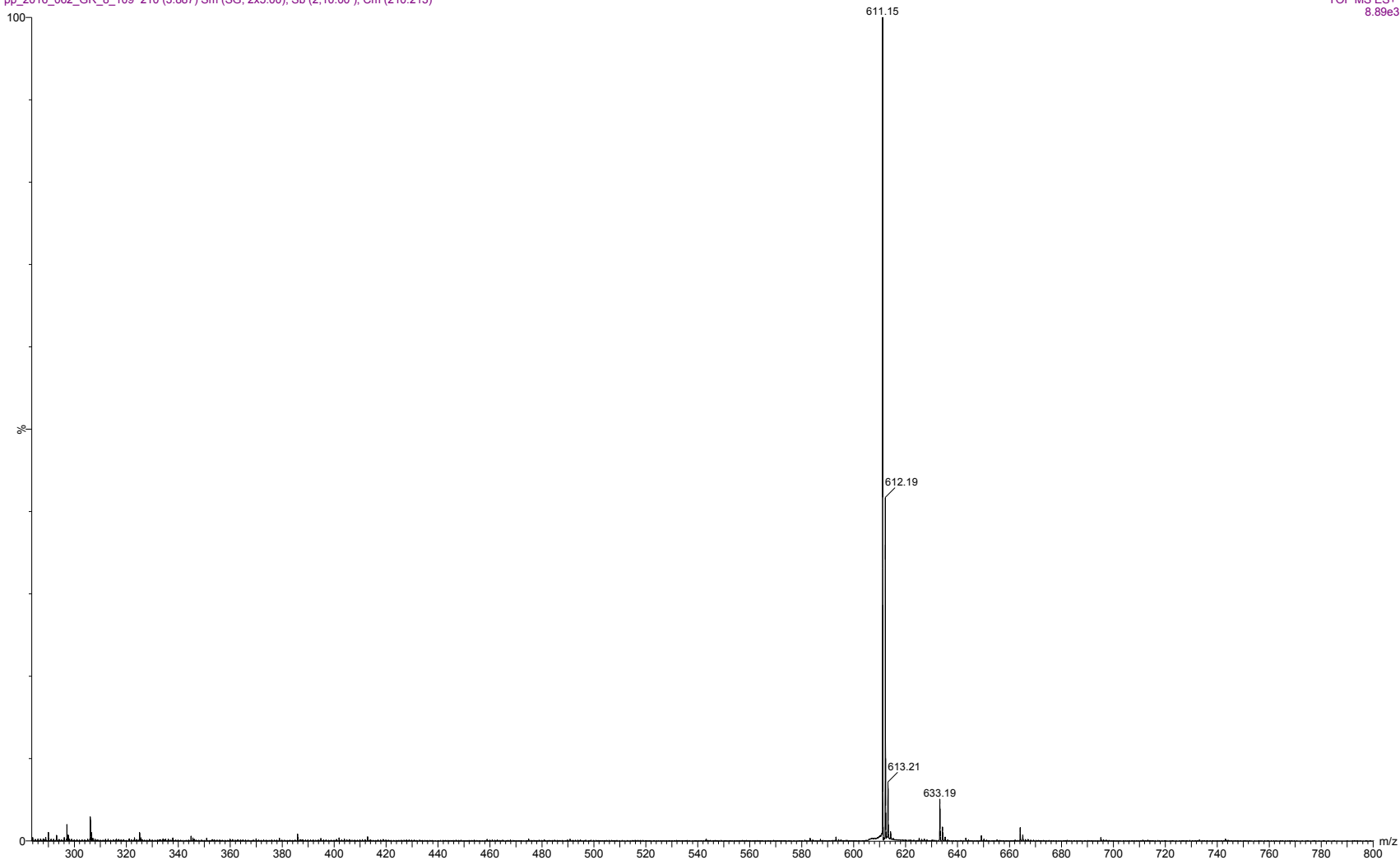
Viorica Rusu, QC/QA Manager



pp_2016_062_GR_8_109 210 (3.887) Sm (SG, 2x5.00); Sb (2,10.00); Cm (210:213)

7.0000000

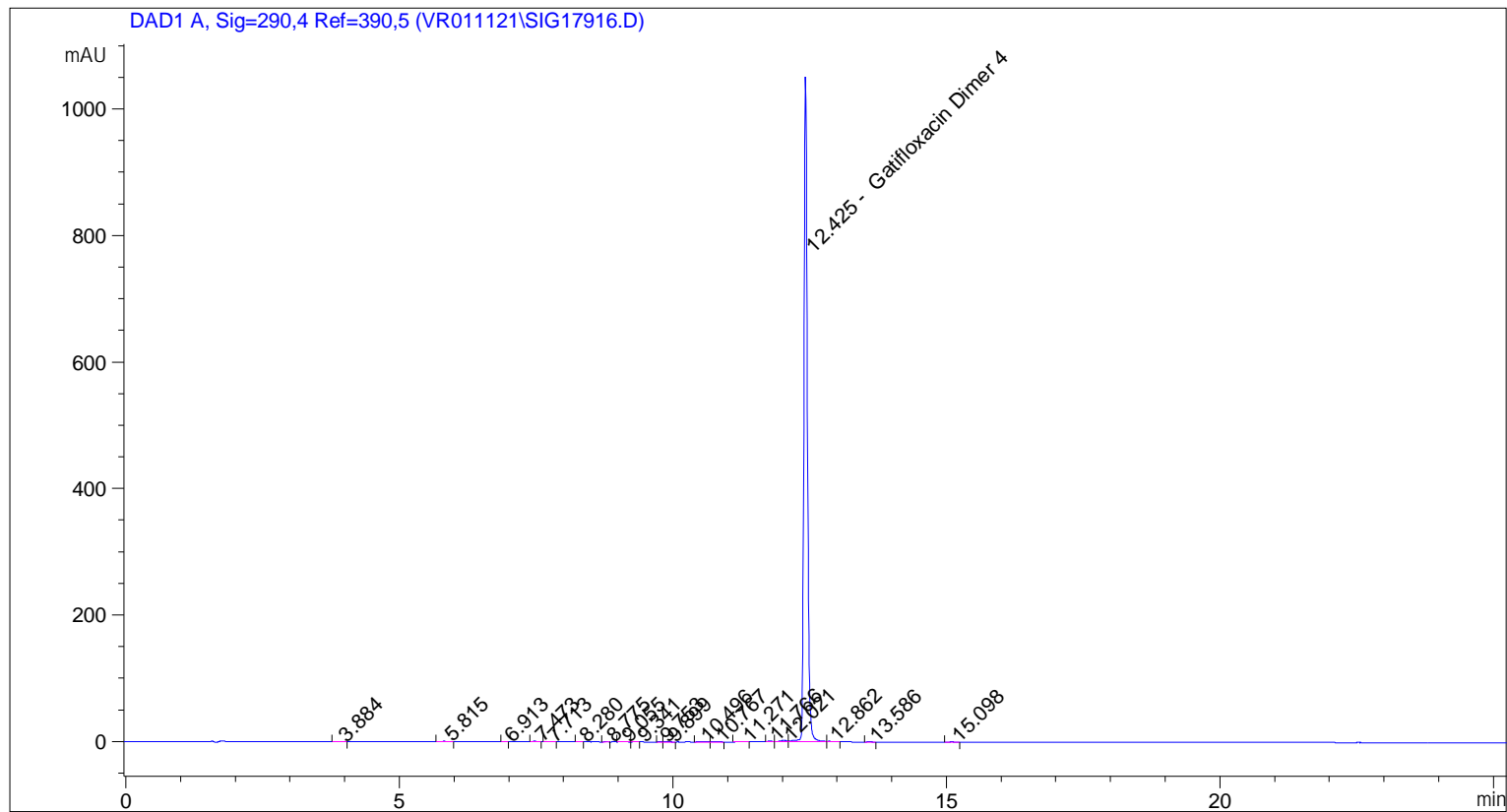
05-Jul-2016, 11:56:00
TOF MS ES+
8.89e3



ESI-MS spectrum for sample GR-8-109. Shows monoisotopic [M+H]⁺ mass.

```

=====
Acq. Operator   : vrusu
Acq. Instrument : Instrument 1                Location : Vial 15
Injection Date  : 2/25/2021 2:20:33 PM
                                           Inj Volume : 7.0 µl
Acq. Method     : C:\CHEM32\1\METHODS\VR022521_109.M
Last changed    : 2/25/2021 2:15:30 PM by vrusu
Analysis Method : C:\CHEM32\1\METHODS\VR022521_109PM.M
Last changed    : 2/25/2021 3:27:58 PM by vrusu
  
```



=====
 Area Percent Report
 =====

```

Sorted By           :      Signal
Calib. Data Modified :      2/25/2021 3:25:53 PM
Multiplier:         :      1.0000
Dilution:           :      1.0000
Use Multiplier & Dilution Factor with ISTDs
  
```

Signal 1: DAD1 A, Sig=290,4 Ref=390,5

Peak #	RetTime [min]	Type	Width [min]	Area [mAU*s]	Area %	Name
1	3.884	BB	0.0997	1.54476	0.0330	?
2	5.815	BB	0.0897	4.53453	0.0968	?
3	6.913	BB	0.0557	6.62994e-1	0.0142	?
4	7.473	BB	0.0748	4.82243	0.1030	?
5	7.713	BB	0.0686	1.77822	0.0380	?
6	8.280	BB	0.0602	9.29928e-1	0.0199	?
7	8.775	BB	0.0571	5.65720e-1	0.0121	?
8	9.055	BB	0.0763	1.36585	0.0292	?

Sample Name: GR-8-109

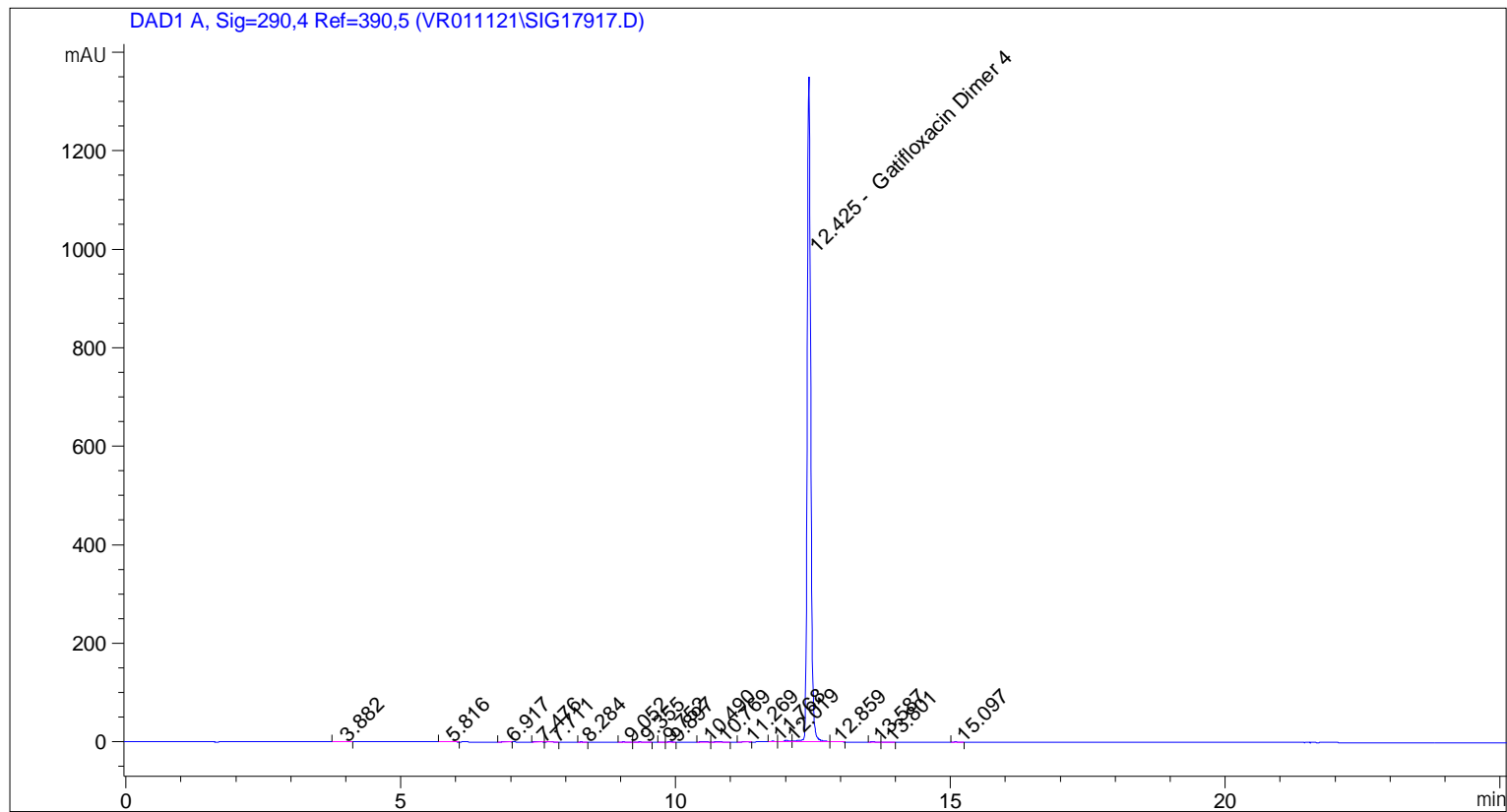
Peak #	RetTime [min]	Type	Width [min]	Area [mAU*s]	Area %	Name
9	9.341	BB	0.0550	4.94462e-1	0.0106	?
10	9.753	BV	0.0594	6.98776e-1	0.0149	?
11	9.899	VB	0.0835	2.57705	0.0550	?
12	10.496	BV	0.1232	4.78894	0.1023	?
13	10.767	VB	0.1006	4.49937	0.0961	?
14	11.271	BB	0.0678	2.82664	0.0604	?
15	11.766	BB	0.0683	3.12174	0.0667	?
16	12.021	BV	0.0955	13.06736	0.2790	?
17	12.425	VV	0.0673	4623.38916	98.7190	Gatifloxacin Dimer 4
18	12.862	VB	0.0867	4.98826	0.1065	?
19	13.586	BB	0.0778	3.27158	0.0699	?
20	15.098	BB	0.0718	3.45440	0.0738	?

Totals : 4683.38219

=====
*** End of Report ***

```

=====
Acq. Operator   : vrusu
Acq. Instrument : Instrument 1                Location : Vial 16
Injection Date  : 2/25/2021 2:54:00 PM
                                           Inj Volume : 7.0 µl
Acq. Method     : C:\CHEM32\1\METHODS\VR022521_109.M
Last changed    : 2/25/2021 2:53:10 PM by vrusu
Analysis Method : C:\CHEM32\1\METHODS\VR022521_109PM.M
Last changed    : 2/25/2021 3:27:58 PM by vrusu
  
```



```

=====
                          Area Percent Report
=====
  
```

```

Sorted By           :      Signal
Calib. Data Modified :      2/25/2021 3:25:53 PM
Multiplier:         :      1.0000
Dilution:           :      1.0000
Use Multiplier & Dilution Factor with ISTDs
  
```

Signal 1: DAD1 A, Sig=290,4 Ref=390,5

Peak #	RetTime [min]	Type	Width [min]	Area [mAU*s]	Area %	Name
1	3.882	BB	0.1014	2.11611	0.0352	?
2	5.816	BB	0.0939	5.56517	0.0925	?
3	6.917	BB	0.0623	4.43976	0.0738	?
4	7.476	BB	0.0826	6.55797	0.1090	?
5	7.711	BB	0.0744	2.78482	0.0463	?
6	8.284	BB	0.0667	9.73988e-1	0.0162	?
7	9.052	BV	0.0830	1.74407	0.0290	?
8	9.355	VB	0.1075	2.72466	0.0453	?

Sample Name: GR-8-109 spl-2

Peak #	RetTime [min]	Type	Width [min]	Area [mAU*s]	Area %	Name
9	9.752	BV	0.0625	9.70486e-1	0.0161	?
10	9.897	VB	0.0719	3.11143	0.0517	?
11	10.490	BV	0.1191	5.22356	0.0868	?
12	10.769	VB	0.1153	5.77288	0.0960	?
13	11.269	BB	0.0742	3.93119	0.0653	?
14	11.768	BB	0.0651	3.37551	0.0561	?
15	12.019	BV	0.0966	15.93001	0.2648	?
16	12.425	VV	0.0693	5934.66211	98.6478	Gatifloxacin Dimer 4
17	12.859	VB	0.0992	6.47650	0.1077	?
18	13.587	BV	0.0761	4.46556	0.0742	?
19	13.801	VB	0.0852	1.03523	0.0172	?
20	15.097	BB	0.0734	4.14877	0.0690	?

Totals : 6016.00978

=====
*** End of Report ***