

Name:	(±)-Baclofen-d4 (4-chlorophenyl-d4)
Lot#:	GR-16-261
Test Date:	12/13/2021 (re-test date: 12/13/2026)
CAS No.:	1189938-30-4
MF:	C ₁₀ H ₈ D ₄ ClNO ₂
MW:	217.68
Appearance:	White solid
Purity:	99.6% by HPLC (average of two sample preparations)
¹H-NMR:	Conforms
MS-ESI (-)	Conforms (shows peaks at m/z = 217.34 & 219.32 [M+H] ⁺ ; exhibits the expected pattern for mono-chloro compounds)
Storage	Store at -18°C in a dry place away from direct sunlight

Approved by:

Date: 12/15/2021

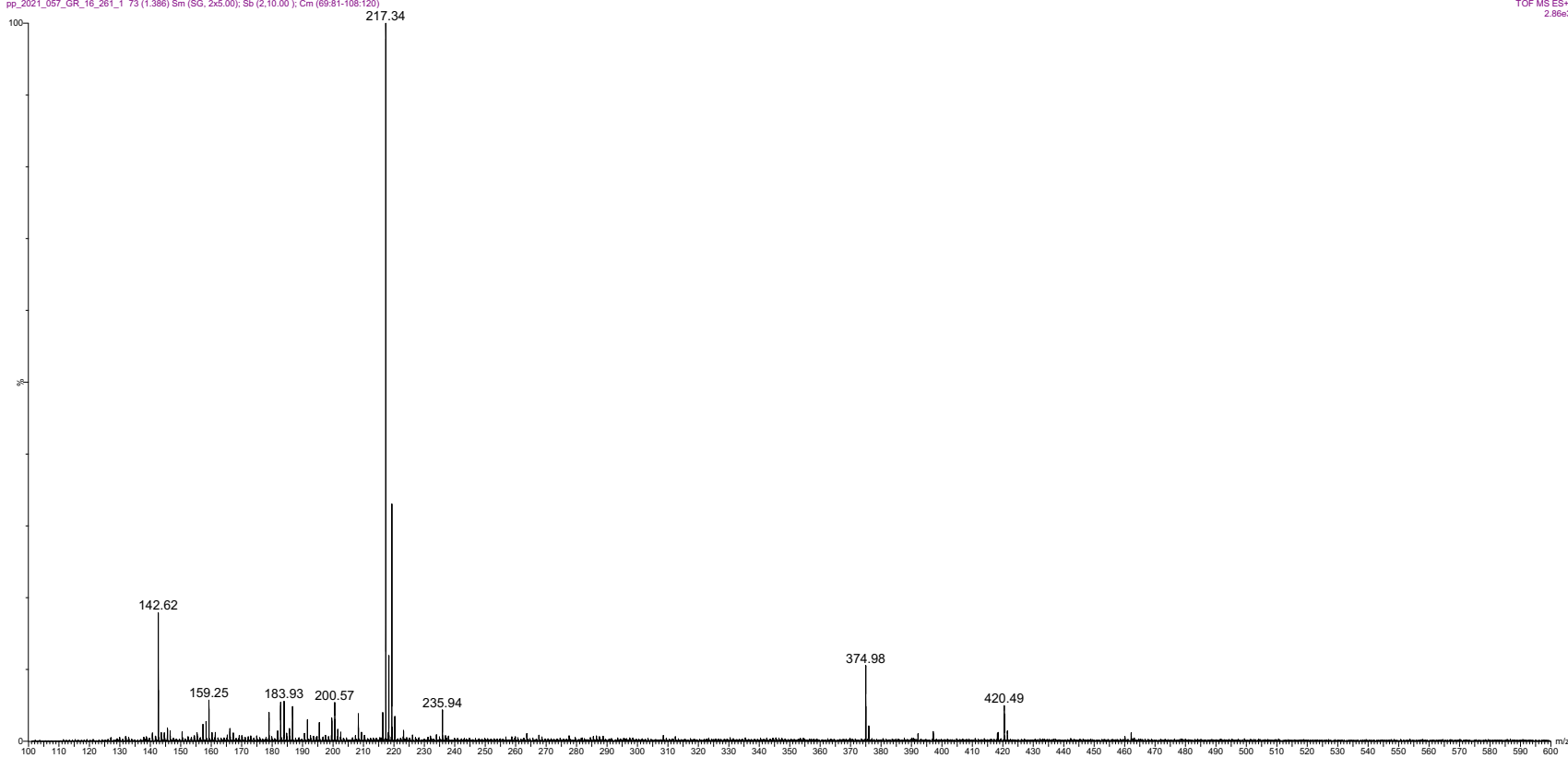


Viorica Rusu, QC/QA Manager

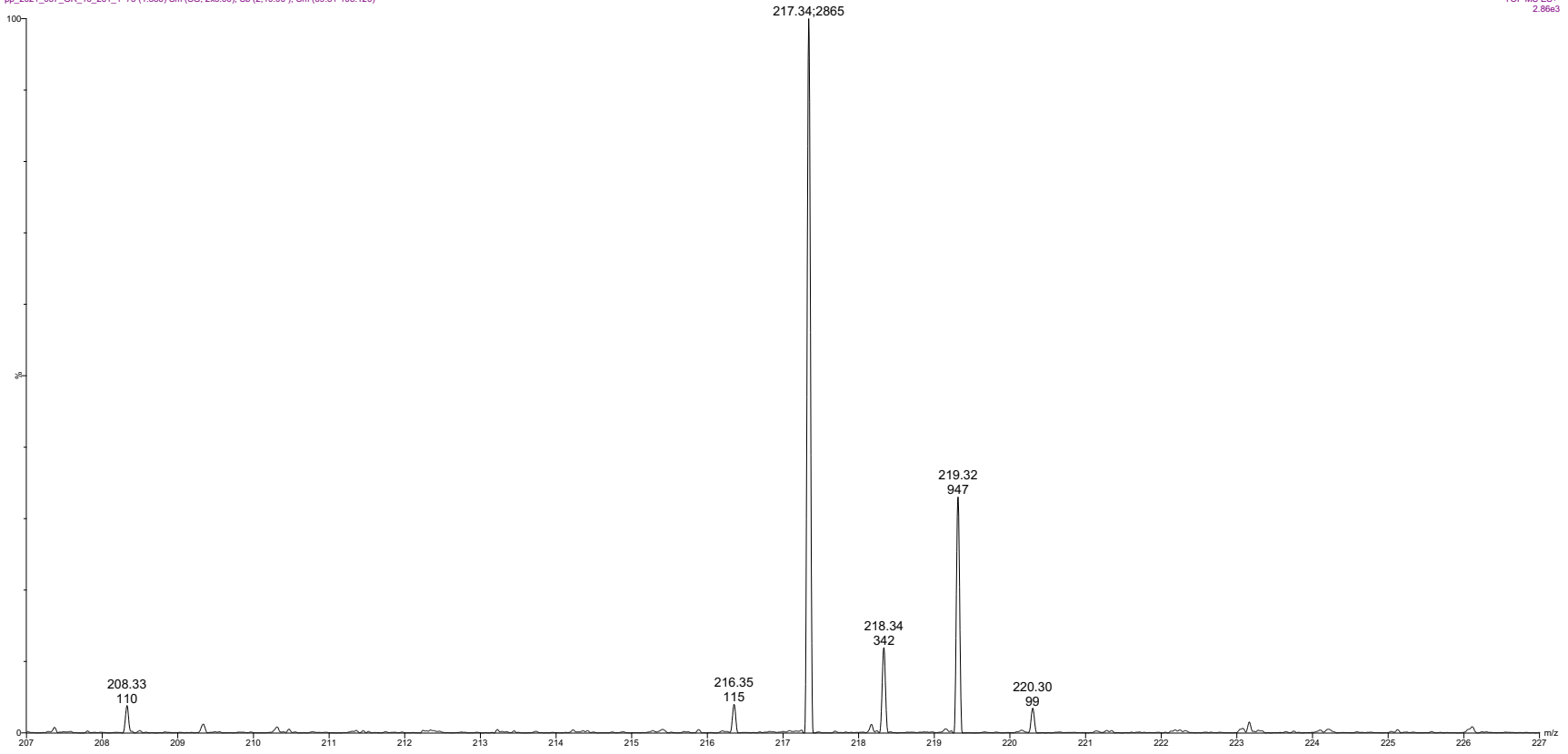
(+/-)-Baclofen-D4 (4-Chlorophenyl-D4)
1H-NMR, 600 MHz
Solvent: D2O
Lot No.: GR-16-261



pp_2021_057_GR_16_261_1 73 (1.386) Sm (SG, 2x5.00); Sb (2,10.00); Cm (69:81-108:120)

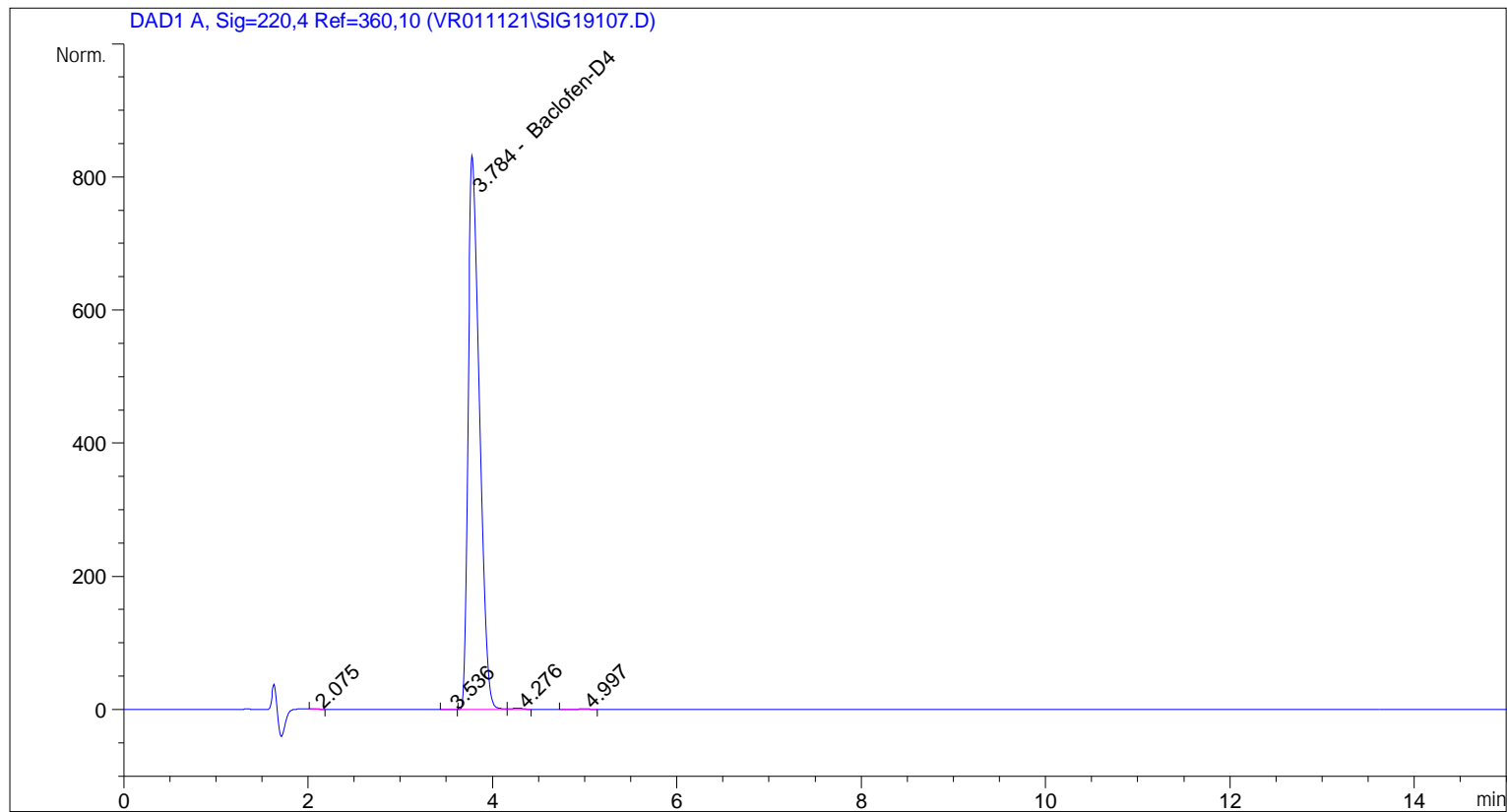


ESI-MS spectrum for sample GR-16-261. Shows monoisotopic $[M+H]^+$ mass.



Expansion of above showing intensity labels.

=====
Acq. Operator : vrusu
Acq. Instrument : Instrument 1 Location : Vial 89
Injection Date : 12/13/2021 8:28:22 AM Inj Volume : 5.0 µl
Acq. Method : C:\CHEM32\1\METHODS\VR121321_261.M
Last changed : 12/13/2021 8:27:35 AM by vrusu
Analysis Method : C:\CHEM32\1\METHODS\VR121321_261PM.M
Last changed : 12/13/2021 9:47:39 AM by vrusu



=====
Area Percent Report
=====

Sorted By : Signal
Calib. Data Modified : 12/13/2021 9:47:18 AM
Multiplier: : 1.0000
Dilution: : 1.0000
Use Multiplier & Dilution Factor with ISTDs

Signal 1: DAD1 A, Sig=220,4 Ref=360,10

Peak #	RetTime [min]	Type	Width [min]	Area [mAU*s]	Area %	Name
1	2.075	BB	0.0817	3.16563	0.0442	?
2	3.536	BB	0.0807	1.79300	0.0250	?
3	3.784	BV	0.1341	7141.63574	99.6120	Baclofen-D4
4	4.276	VB	0.1307	15.11929	0.2109	?
5	4.997	BB	0.1308	7.74196	0.1080	?

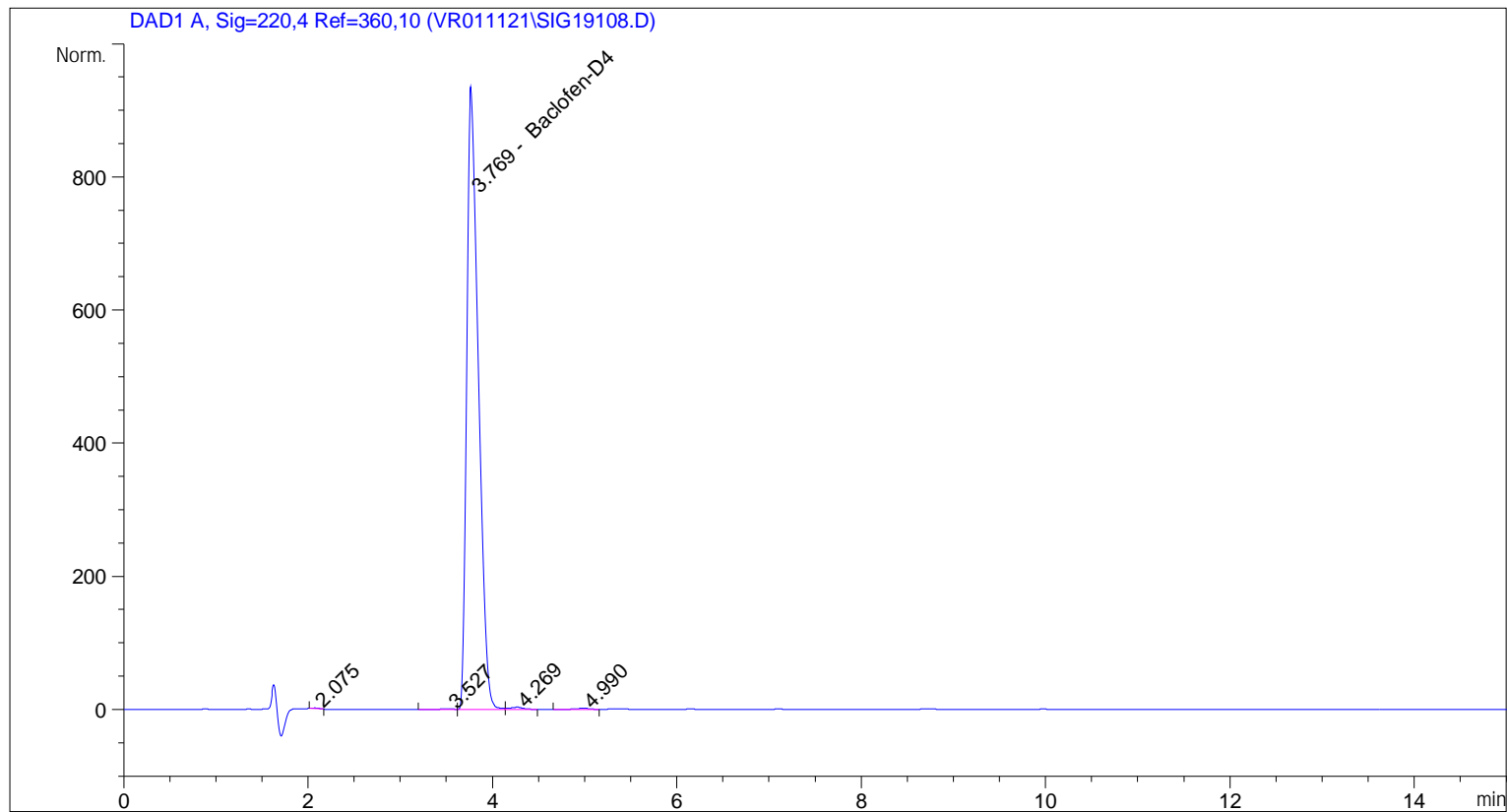
Totals : 7169.45563

=====

*** End of Report ***

```

=====
Acq. Operator   : vrusu
Acq. Instrument : Instrument 1                Location : Vial 90
Injection Date  : 12/13/2021 8:51:55 AM
                                           Inj Volume : 5.0 µl
Acq. Method    : C:\CHEM32\1\METHODS\VR121321_261.M
Last changed   : 12/13/2021 8:51:10 AM by vrusu
Analysis Method : C:\CHEM32\1\METHODS\VR121321_261PM.M
Last changed   : 12/13/2021 9:47:39 AM by vrusu
  
```



=====
 Area Percent Report
 =====

```

Sorted By      : Signal
Calib. Data Modified : 12/13/2021 9:47:18 AM
Multiplier:    : 1.0000
Dilution:     : 1.0000
Use Multiplier & Dilution Factor with ISTDs
  
```

Signal 1: DAD1 A, Sig=220,4 Ref=360,10

Peak #	RetTime [min]	Type	Width [min]	Area [mAU*s]	Area %	Name
1	2.075	BB	0.0801	5.77641	0.0690	?
2	3.527	BV	0.1321	8.42113	0.1006	?
3	3.769	VV	0.1378	8316.39746	99.3044	Baclofen-D4
4	4.269	VB	0.1430	29.61728	0.3537	?
5	4.990	BB	0.1377	14.43760	0.1724	?

Totals : 8374.64987

=====

*** End of Report ***