

Name: Eplerenone Carboxylic Acid
Lot#: GR-9-037
Test Date: 04/15/2021 (re-test date: 04/15/2026)
CAS No.: NA
MF: C₂₃H₂₈O₆
MW: 400.19
Appearance: Pale yellow solid
Purity: 96.8% by HPLC (average of two sample preparations)
¹H-NMR: Conforms (contains a trace of EtOAc)
MS-ESI (-) Conforms (shows peak at m/z = 399.20 [M-H]⁻)
Storage Store at -18°C in a dry place away from direct sunlight

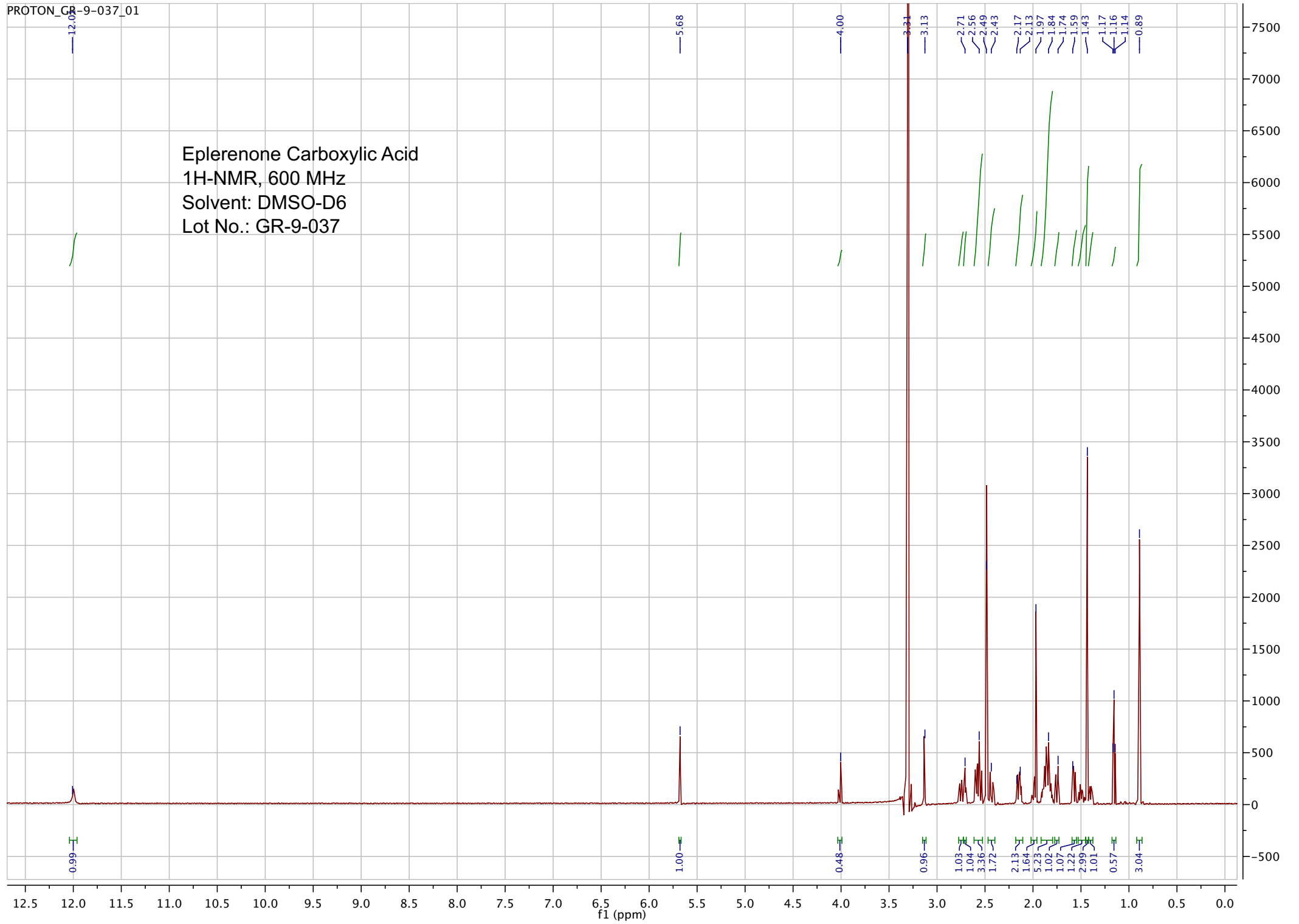
Approved by:

Date: 04/15/2021



Viorica Rusu, QC/QA Manager

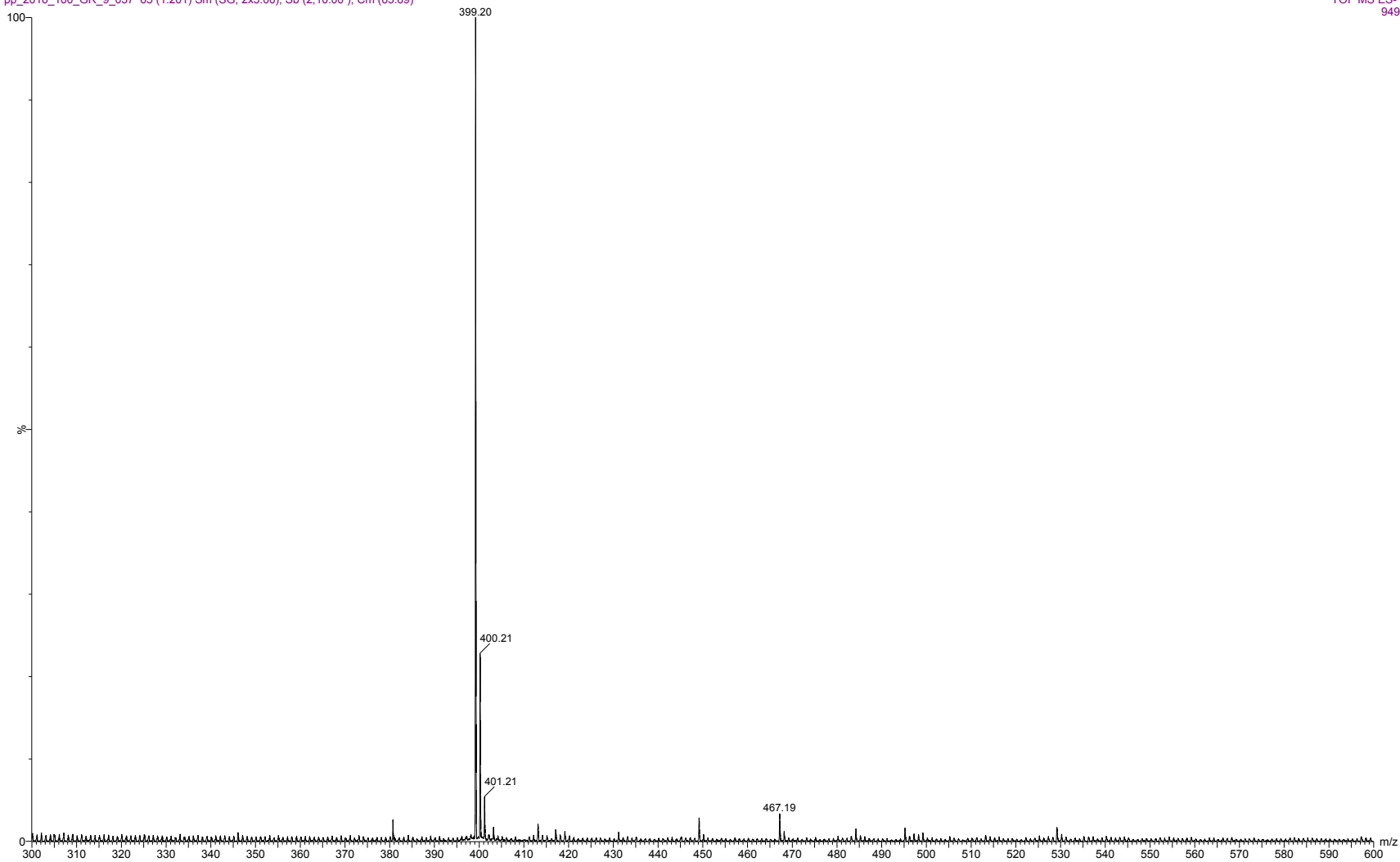
Eplerenone Carboxylic Acid
1H-NMR, 600 MHz
Solvent: DMSO-D6
Lot No.: GR-9-037



pp_2016_100_GR_9_037 65 (1.201) Sm (SG, 2x5.00); Sb (2,10.00); Cm (65:69)

7.00000000

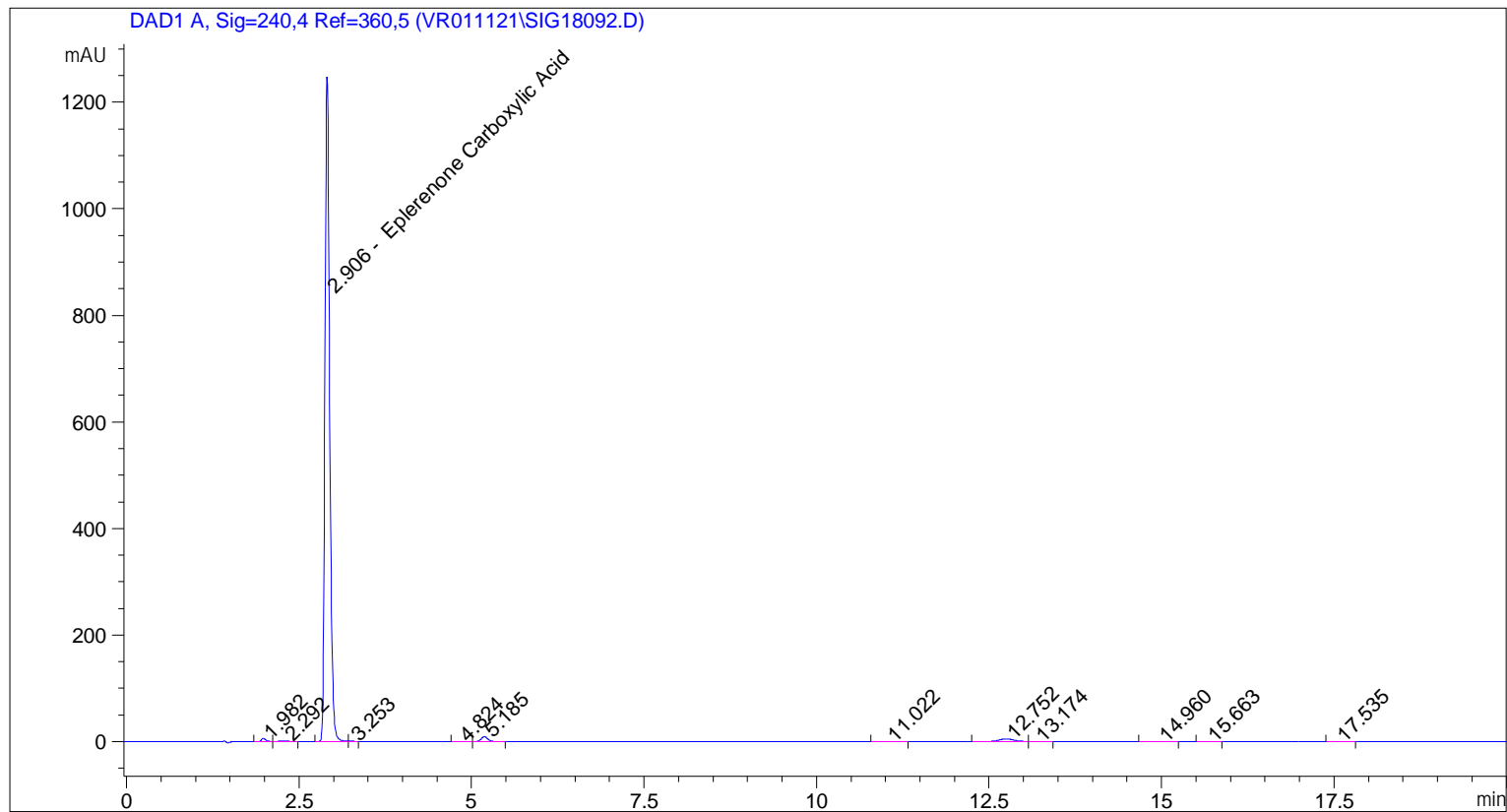
04-Oct-2016, 11:18:21
TOF MS ES-
949



ESI-MS spectrum for sample GR-9-037 (negative ion mode). Shows monoisotopic $[M+H]^+$ mass.

```

=====
Acq. Operator   : vrusu
Acq. Instrument : Instrument 1                Location : Vial 89
Injection Date  : 4/15/2021 1:47:08 PM
                                           Inj Volume : 4.0 µl
Acq. Method     : C:\CHEM32\1\METHODS\VR041521_037.M
Last changed    : 4/15/2021 1:46:15 PM by vrusu
Analysis Method : C:\CHEM32\1\METHODS\VR041521_037PM.M
Last changed    : 4/15/2021 3:19:17 PM by vrusu
  
```



=====
 Area Percent Report
 =====

```

Sorted By           :      Signal
Calib. Data Modified :      4/15/2021 3:18:07 PM
Multiplier:         :      1.0000
Dilution:           :      1.0000
Use Multiplier & Dilution Factor with ISTDs
  
```

Signal 1: DAD1 A, Sig=240,4 Ref=360,5

Peak #	RetTime [min]	Type	Width [min]	Area [mAU*s]	Area %	Name
1	1.982	BV	0.0674	26.51422	0.4314	?
2	2.292	VB	0.1067	10.96962	0.1785	?
3	2.906	BV	0.0736	5952.37500	96.8403	Eplerenone Carboxylic Acid
4	3.253	VB	0.0760	3.21703	0.0523	?
5	4.824	VV	0.1063	3.52318	0.0573	?
6	5.185	VB	0.1034	61.01051	0.9926	?
7	11.022	BB	0.1799	2.97492	0.0484	?
8	12.752	BV	0.2315	74.20434	1.2072	?

Sample Name: GR-9-037

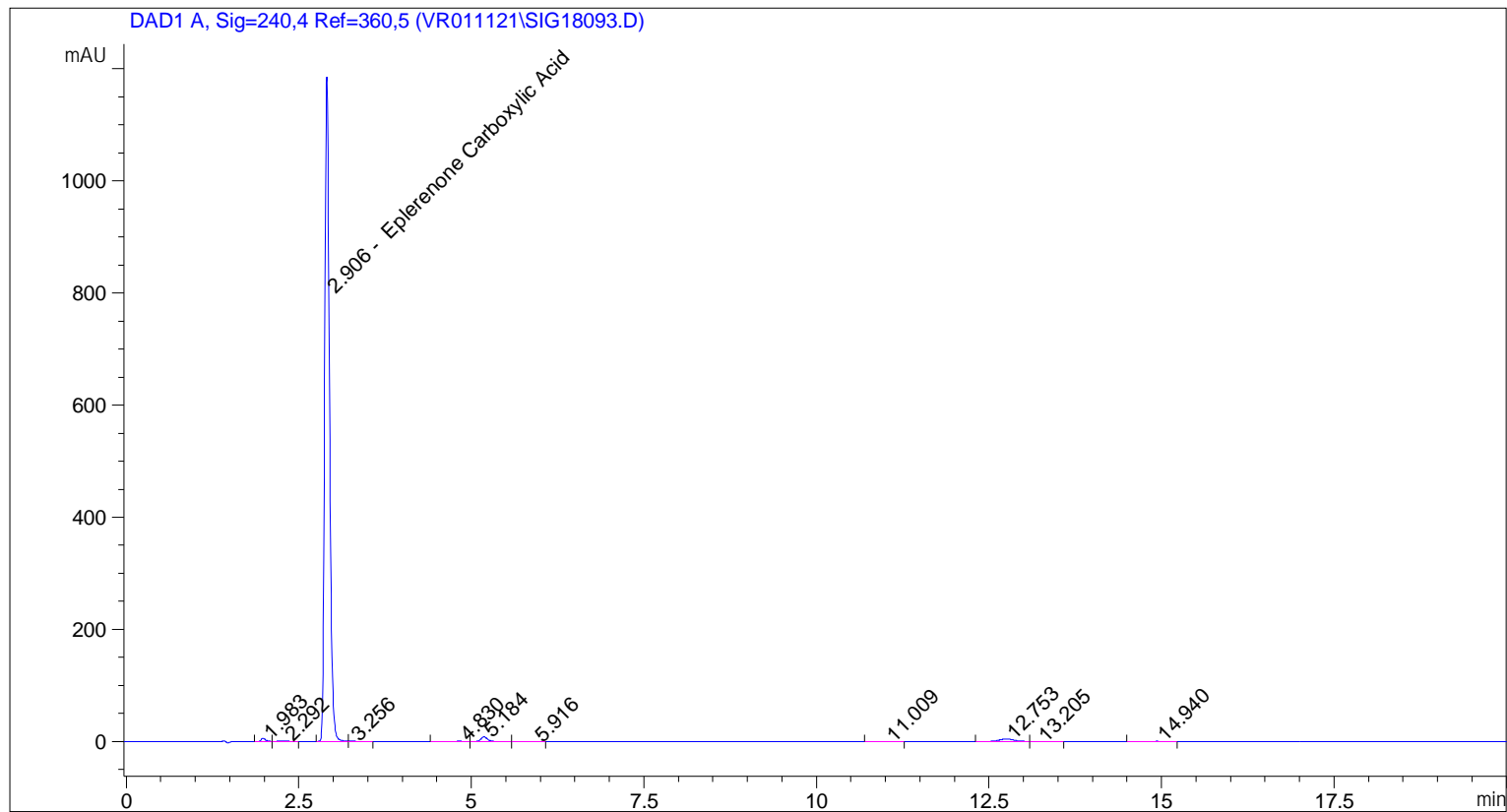
Peak #	RetTime [min]	Type	Width [min]	Area [mAU*s]	Area %	Name
9	13.174	VB	0.1674	3.13625	0.0510	?
10	14.960	BB	0.2132	4.94048	0.0804	?
11	15.663	BB	0.1757	1.85852	0.0302	?
12	17.535	BB	0.1785	1.86453	0.0303	?

Totals : 6146.58859

=====
*** End of Report ***

```

=====
Acq. Operator   : vrusu
Acq. Instrument : Instrument 1                Location : Vial 90
Injection Date  : 4/15/2021 2:11:52 PM
                                           Inj Volume : 4.0 µl
Acq. Method     : C:\CHEM32\1\METHODS\VR041521_037.M
Last changed    : 4/15/2021 2:11:01 PM by vrusu
Analysis Method : C:\CHEM32\1\METHODS\VR041521_037PM.M
Last changed    : 4/15/2021 3:19:17 PM by vrusu
  
```



=====
 Area Percent Report
 =====

```

Sorted By           :      Signal
Calib. Data Modified :      4/15/2021 3:18:07 PM
Multiplier:         :      1.0000
Dilution:           :      1.0000
Use Multiplier & Dilution Factor with ISTDs
  
```

Signal 1: DAD1 A, Sig=240,4 Ref=360,5

Peak #	RetTime [min]	Type	Width [min]	Area [mAU*s]	Area %	Name
1	1.983	BV	0.0643	24.75727	0.4240	?
2	2.292	VB	0.1053	9.28432	0.1590	?
3	2.906	BV	0.0736	5655.42383	96.8589	Eplerenone Carboxylic Acid
4	3.256	VB	0.0992	4.52754	0.0775	?
5	4.830	BV	0.1750	6.28512	0.1076	?
6	5.184	VV	0.1049	57.61452	0.9867	?
7	5.916	VV	0.1865	2.43738	0.0417	?
8	11.009	BV	0.1948	3.97254	0.0680	?

Sample Name: GR-9-037 spl-2

Peak #	RetTime [min]	Type	Width [min]	Area [mAU*s]	Area %	Name
9	12.753	BV	0.2357	65.64846	1.1243	?
10	13.205	VB	0.1861	3.60899	0.0618	?
11	14.940	BB	0.2095	5.26772	0.0902	?

Totals : 5838.82769

=====
*** End of Report ***