

Name:	Cabotegravir-D3
Lot#:	GR-17-031
Test Date:	02/07/2022 (re-test date: 02/07/2027)
CAS No.:	1051375-10-0 (unlabelled)
MF:	C ₁₉ H ₁₄ D ₃ F ₂ N ₃ O ₅
MW:	408.37
Appearance:	Off-White solid
Purity:	99.8% by HPLC (average of two sample preparations); >98% atom D
¹H-NMR:	Conforms
MS-ESI (+)	Conforms (shows peak at m/z = 409.11 [M+H] ⁺)
Storage	Store at -18°C in a dry place away from direct sunlight

Approved by:

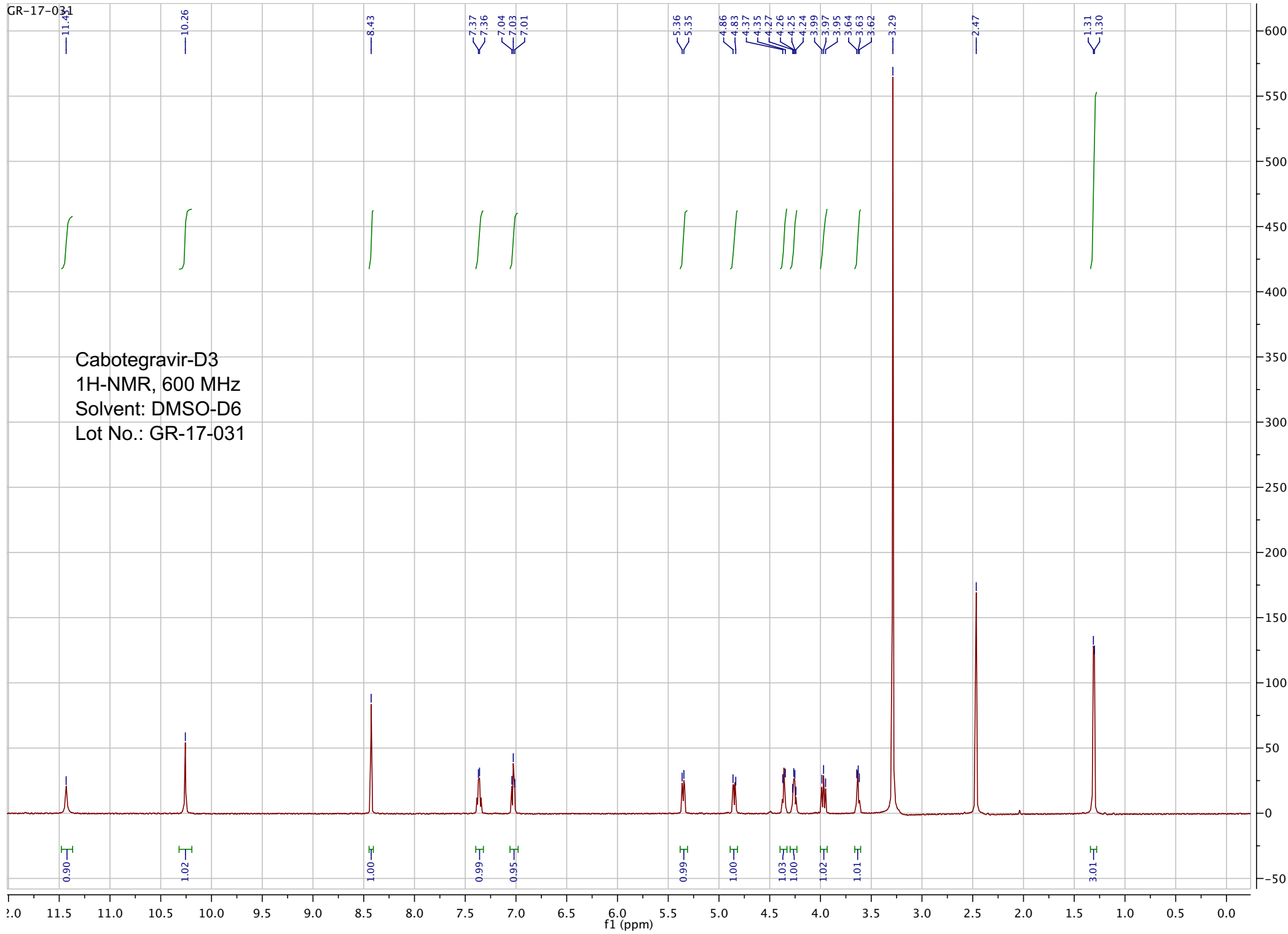
Date: 02/07/2022



Viorica Rusu, QC/QA Manager

GR-17-031

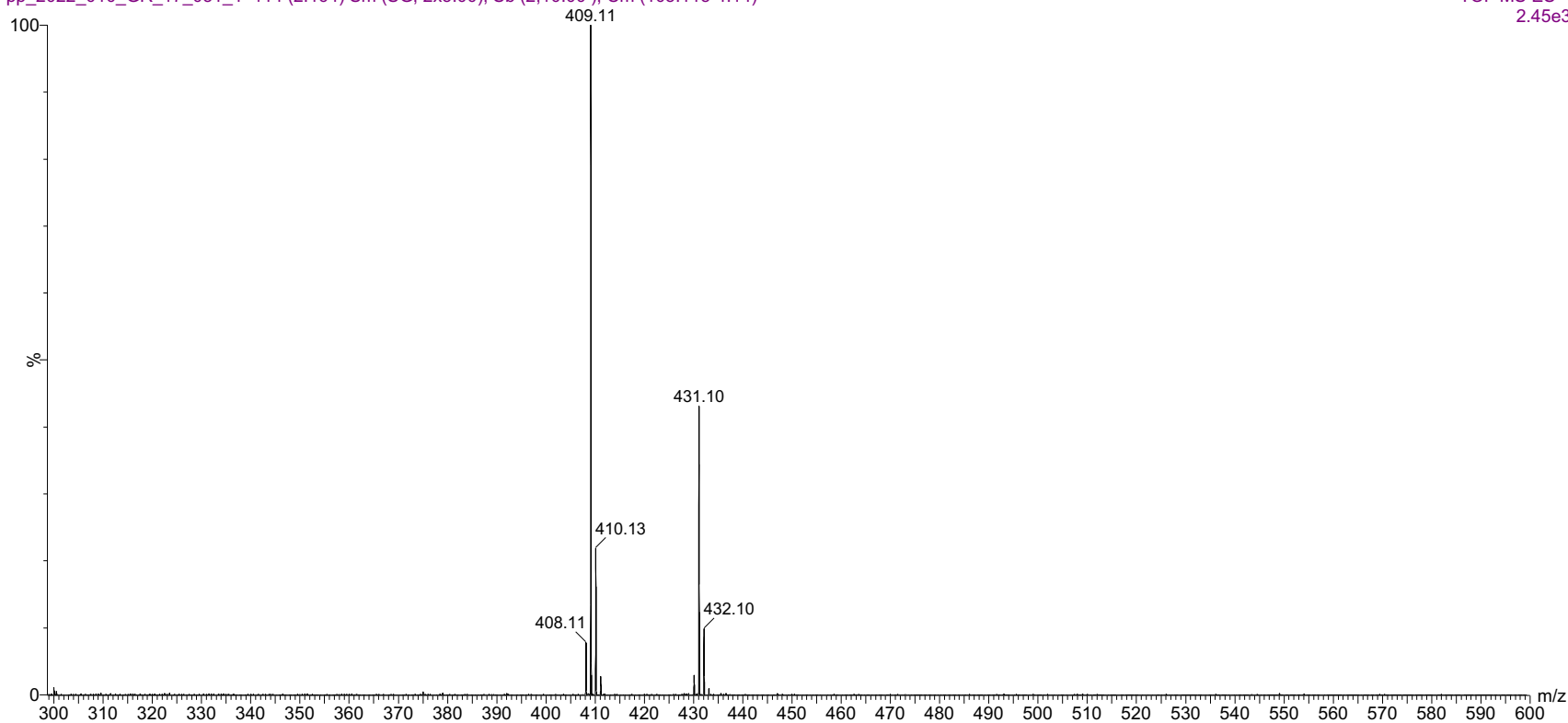
Cabotegravir-D3
1H-NMR, 600 MHz
Solvent: DMSO-D6
Lot No.: GR-17-031



04-Feb-2022, 17:30:41

TOF MS ES+
2.45e3

pp_2022_010_GR_17_031_1 114 (2.164) Sm (SG, 2x5.00); Sb (2,10.00); Cm (105:115-4:14)

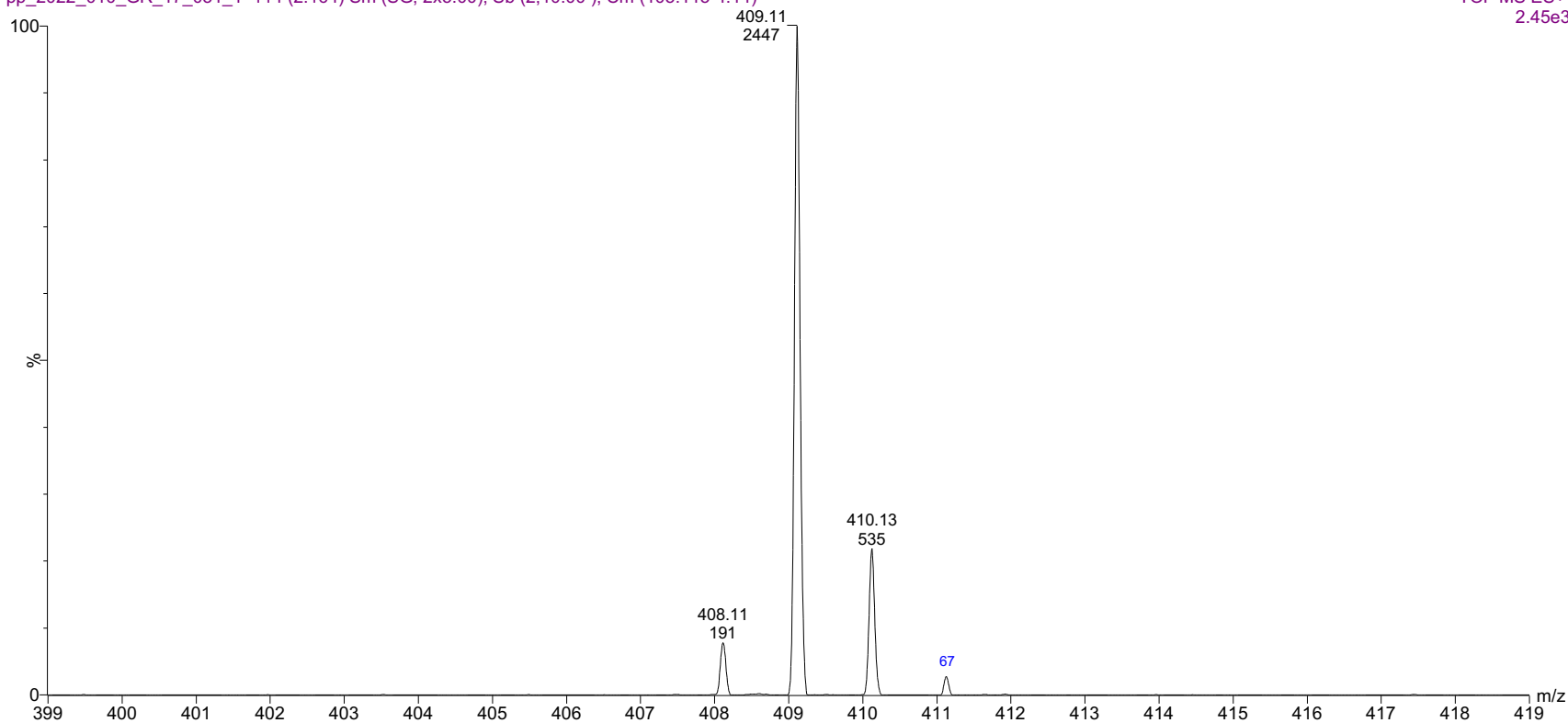


ESI-MS spectrum for sample GR-17-031. Shows monoisotopic [M+H]⁺ mass.

04-Feb-2022, 17:30:41

TOF MS ES+
2.45e3

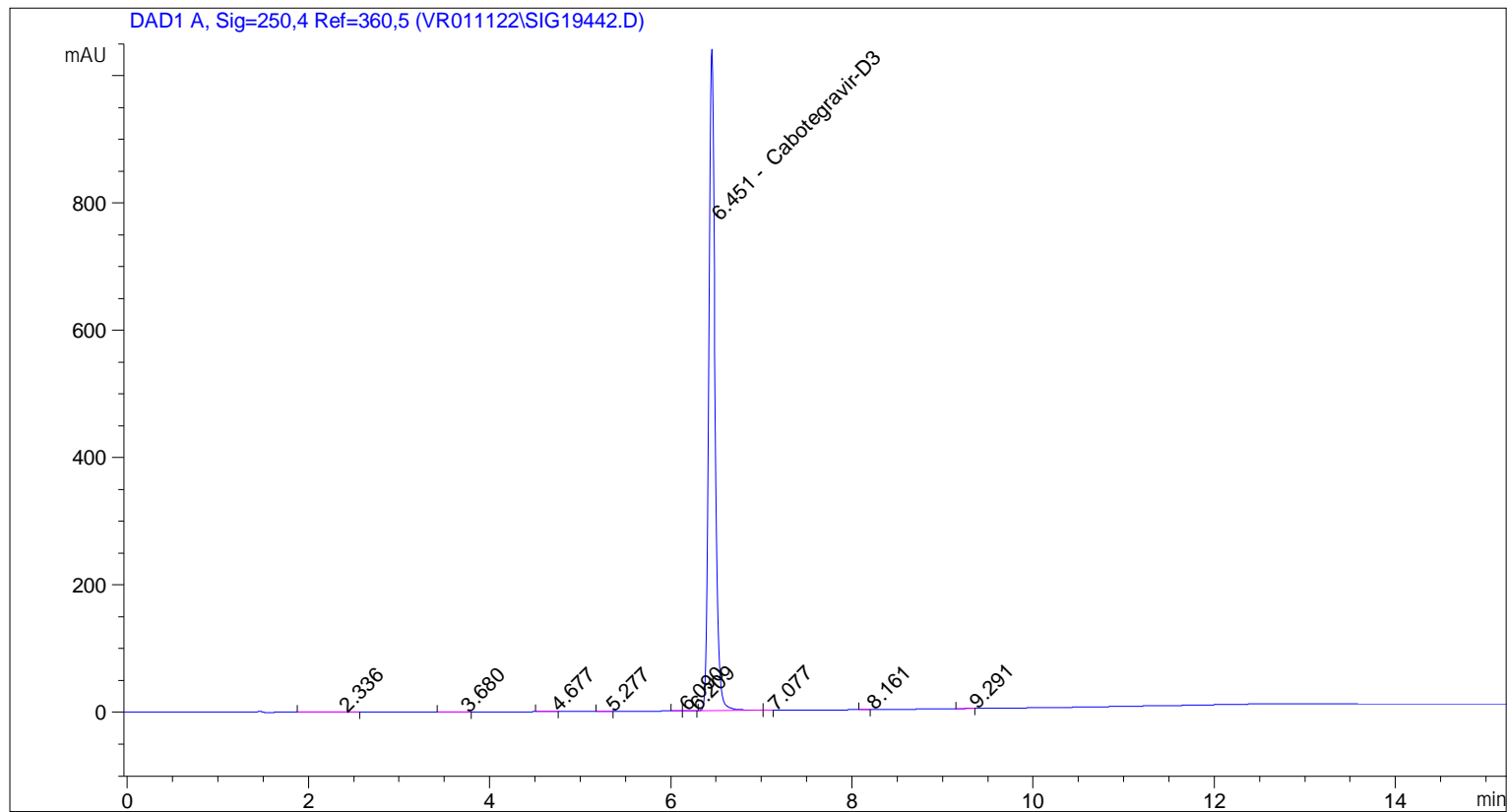
pp_2022_010_GR_17_031_1 114 (2.164) Sm (SG, 2x5.00); Sb (2,10.00); Cm (105:115-4:14)



Expansion of above showing intensity lables.

```

=====
Acq. Operator   : vrusu
Acq. Instrument : Instrument 1                Location : Vial 73
Injection Date  : 2/7/2022 12:44:09 PM
                                           Inj Volume : 10.0 µl
Acq. Method     : C:\CHEM32\1\METHODS\VR020722_031.M
Last changed    : 2/7/2022 12:42:43 PM by vrusu
Analysis Method : C:\CHEM32\1\METHODS\VR020722_031PM.M
Last changed    : 2/7/2022 1:30:27 PM by vrusu
  
```



=====
 Area Percent Report
 =====

```

Sorted By           :      Signal
Calib. Data Modified :      2/7/2022 1:28:12 PM
Multiplier:         :      1.0000
Dilution:           :      1.0000
Use Multiplier & Dilution Factor with ISTDs
  
```

Signal 1: DAD1 A, Sig=250,4 Ref=360,5

Peak #	RetTime [min]	Type	Width [min]	Area [mAU*s]	Area %	Name
1	2.336	BB	0.1764	1.64675	0.0329	?
2	3.680	BB	0.1254	1.79237	0.0358	?
3	4.677	BB	0.0873	1.04597	0.0209	?
4	5.277	BB	0.0747	1.19223	0.0238	?
5	6.090	BV	0.0676	6.70560e-1	0.0134	?
6	6.209	VB	0.0658	2.45623	0.0491	?
7	6.451	BV	0.0740	4989.36377	99.7769	Cabotegravir-D3
8	7.077	VB	0.0783	4.99334e-1	9.986e-3	?

Sample Name: GR-17-031

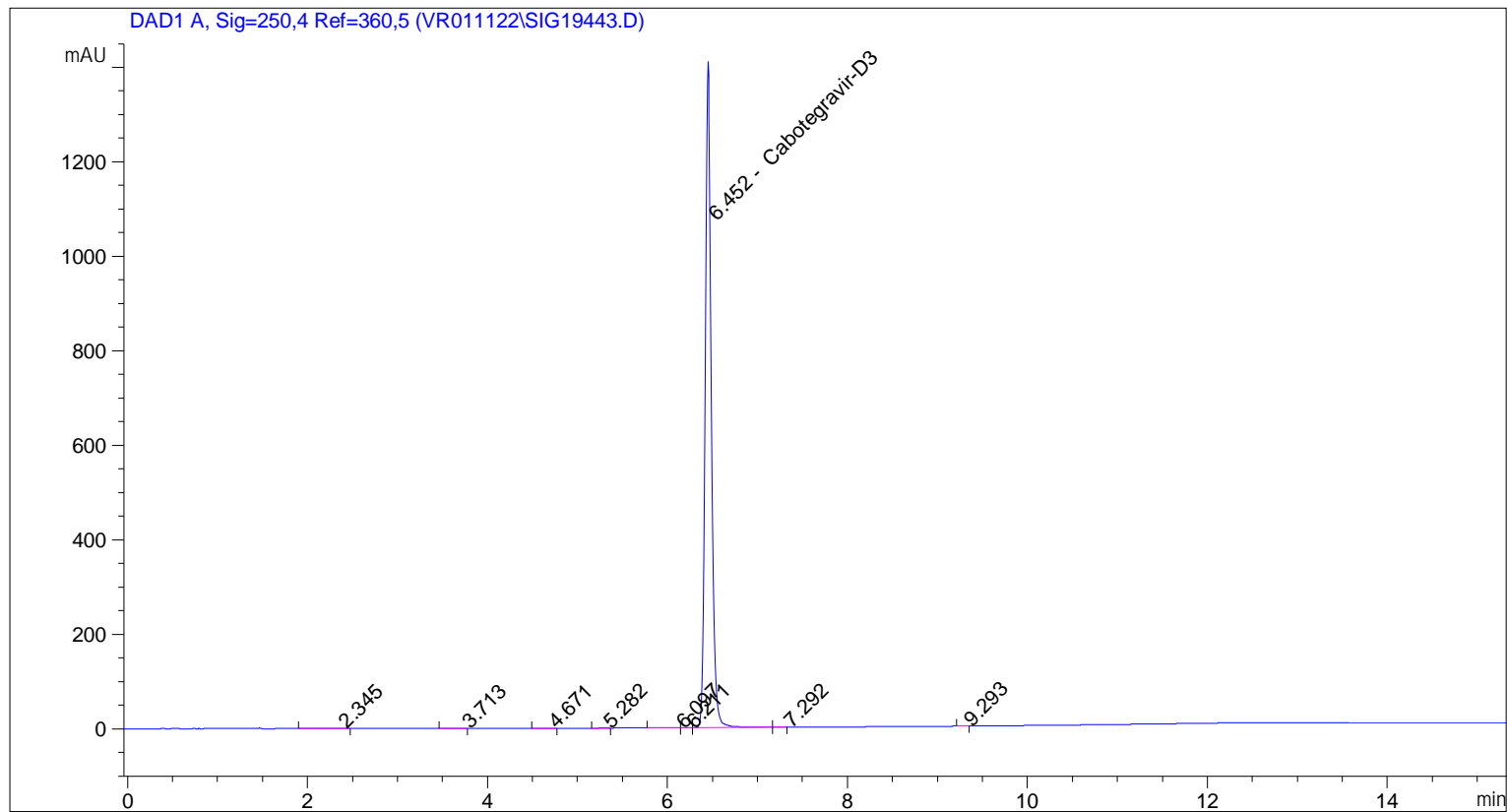
Peak #	RetTime [min]	Type	Width [min]	Area [mAU*s]	Area %	Name
9	8.161	BB	0.0798	3.74827e-1	7.496e-3	?
10	9.291	BB	0.0606	1.47939	0.0296	?

Totals : 5000.52143

=====
*** End of Report ***

```

=====
Acq. Operator   : vrusu
Acq. Instrument : Instrument 1                Location : Vial 74
Injection Date  : 2/7/2022 1:05:33 PM
                                           Inj Volume : 10.0 µl
Acq. Method     : C:\CHEM32\1\METHODS\VR020722_031.M
Last changed    : 2/7/2022 1:00:19 PM by vrusu
Analysis Method : C:\CHEM32\1\METHODS\VR020722_031PM.M
Last changed    : 2/7/2022 1:31:26 PM by vrusu
  
```



=====
 Area Percent Report
 =====

```

Sorted By           :      Signal
Calib. Data Modified :      2/7/2022 1:28:12 PM
Multiplier:         :      1.0000
Dilution:           :      1.0000
Use Multiplier & Dilution Factor with ISTDs
  
```

Signal 1: DAD1 A, Sig=250,4 Ref=360,5

Peak #	RetTime [min]	Type	Width [min]	Area [mAU*s]	Area %	Name
1	2.345	BB	0.1590	2.14062	0.0315	?
2	3.713	BB	0.1336	8.72622e-1	0.0128	?
3	4.671	BB	0.0963	8.99525e-1	0.0132	?
4	5.282	BB	0.0776	1.62349	0.0239	?
5	6.097	BV	0.1120	2.66611	0.0392	?
6	6.211	VV	0.0827	2.48717	0.0366	?
7	6.452	VV	0.0741	6781.03174	99.8151	Cabotegravir-D3
8	7.292	VB	0.1555	7.35228e-1	0.0108	?

Sample Name: GR-17-031 spl-2

Peak #	RetTime [min]	Type	Width [min]	Area [mAU*s]	Area %	Name
9	9.293	BB	0.0609	1.13789	0.0167	?

Totals : 6793.59440

=====
*** End of Report ***