

<b>Name:</b>	<b>Dolutegravir-D3</b>
<b>Lot#:</b>	GR-17-029
<b>Test Date:</b>	02/07/2022 (re-test date: 02/07/2027)
<b>CAS No.:</b>	1051375-16-6 ( <i>unlabeled</i> )
<b>MF:</b>	C <sub>20</sub> H <sub>16</sub> D <sub>3</sub> F <sub>2</sub> N <sub>3</sub> O <sub>5</sub>
<b>MW:</b>	422.40
<b>Appearance:</b>	Off-White solid
<b>Purity:</b>	99.7% by HPLC (average of two sample preparations); >98% atom D
<b><sup>1</sup>H-NMR:</b>	Conforms
<b>MS-ESI (+)</b>	Conforms (shows peaks at m/z = 423.13 [M+H] <sup>+</sup> )
<b>Storage</b>	Store at -18°C in a dry place away from direct sunlight

Approved by:

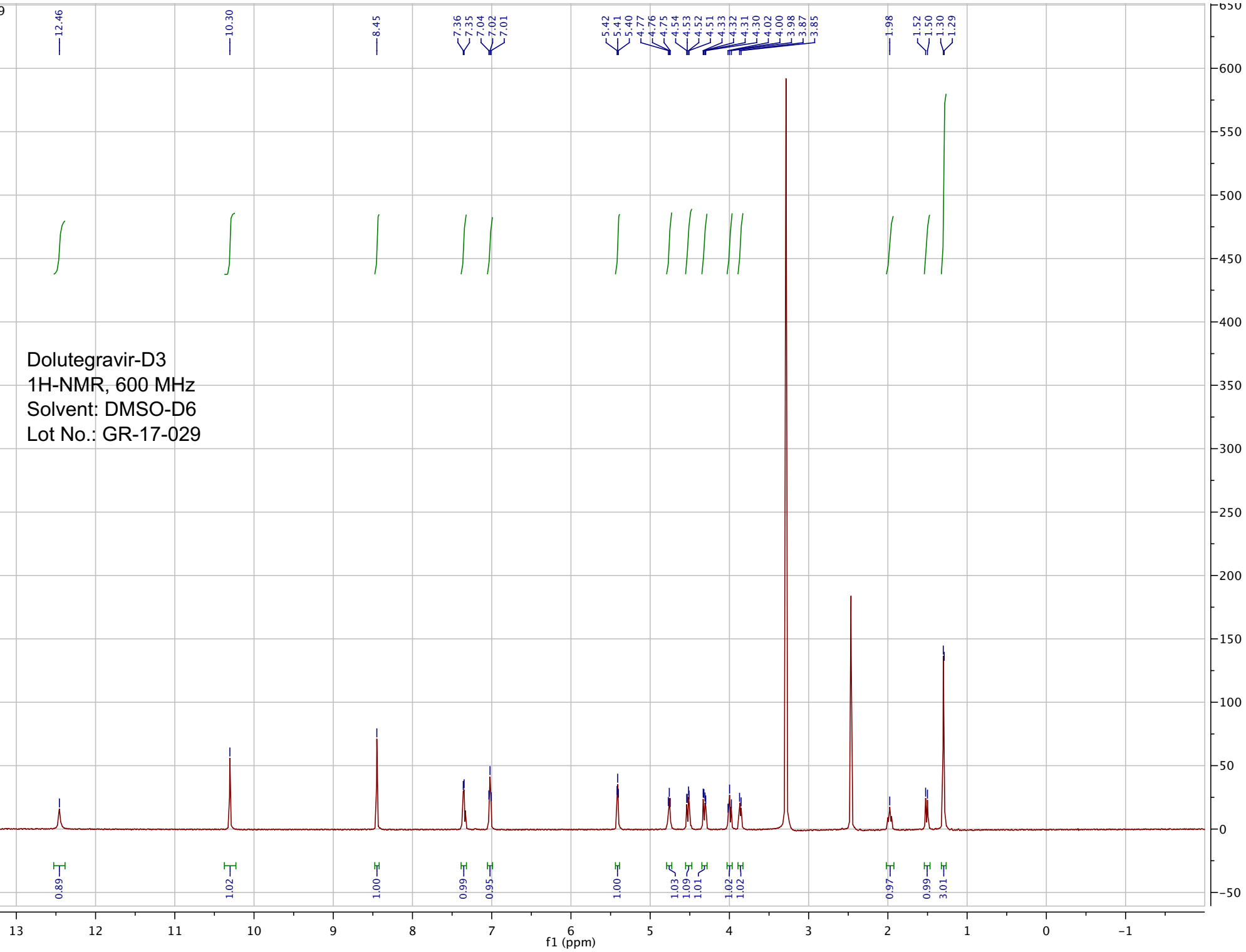
Date: 02/07/2022



Viorica Rusu, QC/QA Manager

GR-17-029

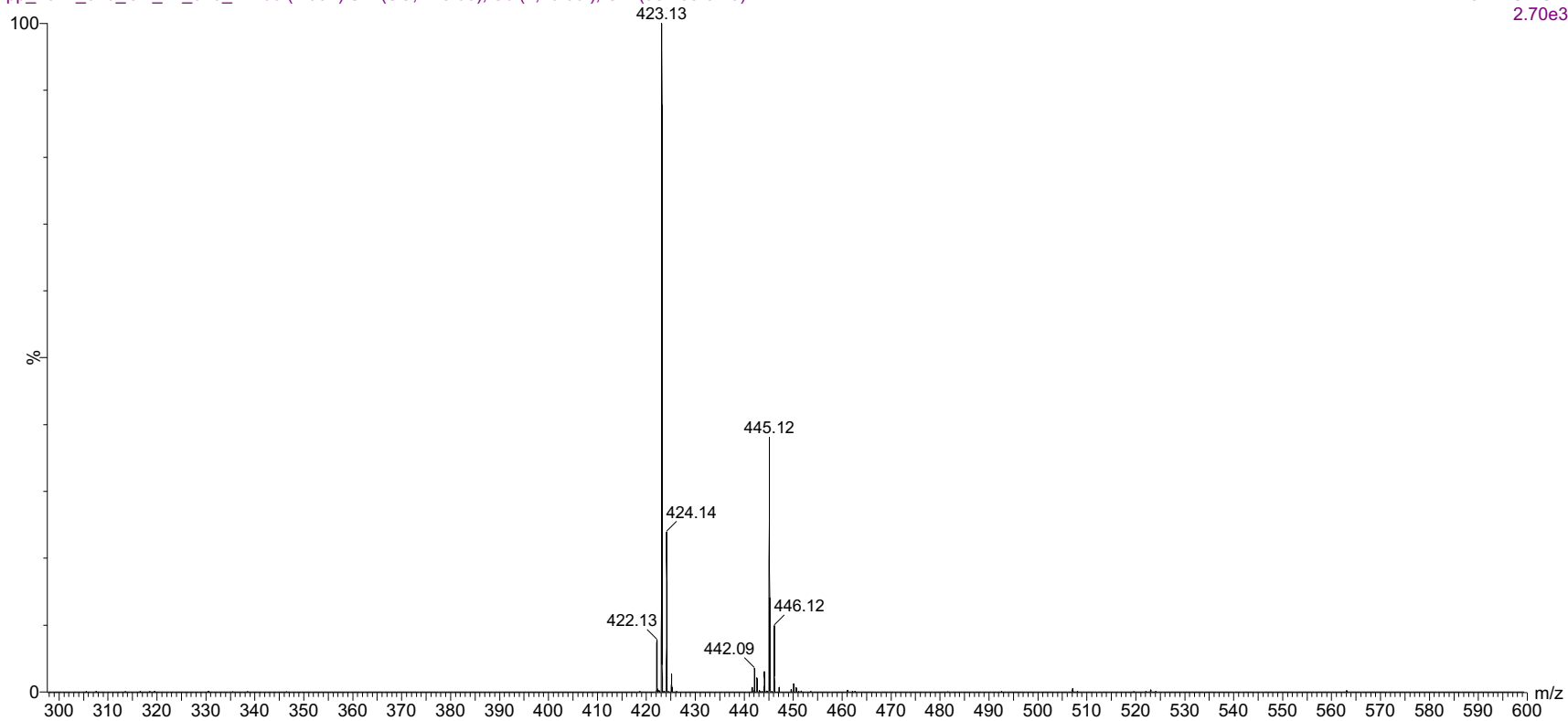
Dolutegravir-D3  
1H-NMR, 600 MHz  
Solvent: DMSO-D6  
Lot No.: GR-17-029



04-Feb-2022, 17:04:30

TOF MS ES+  
2.70e3

pp\_2022\_010\_GR\_17\_029\_1 105 (1.991) Sm (SG, 2x5.00); Sb (2,10.00 ); Cm (98:108-8:18)

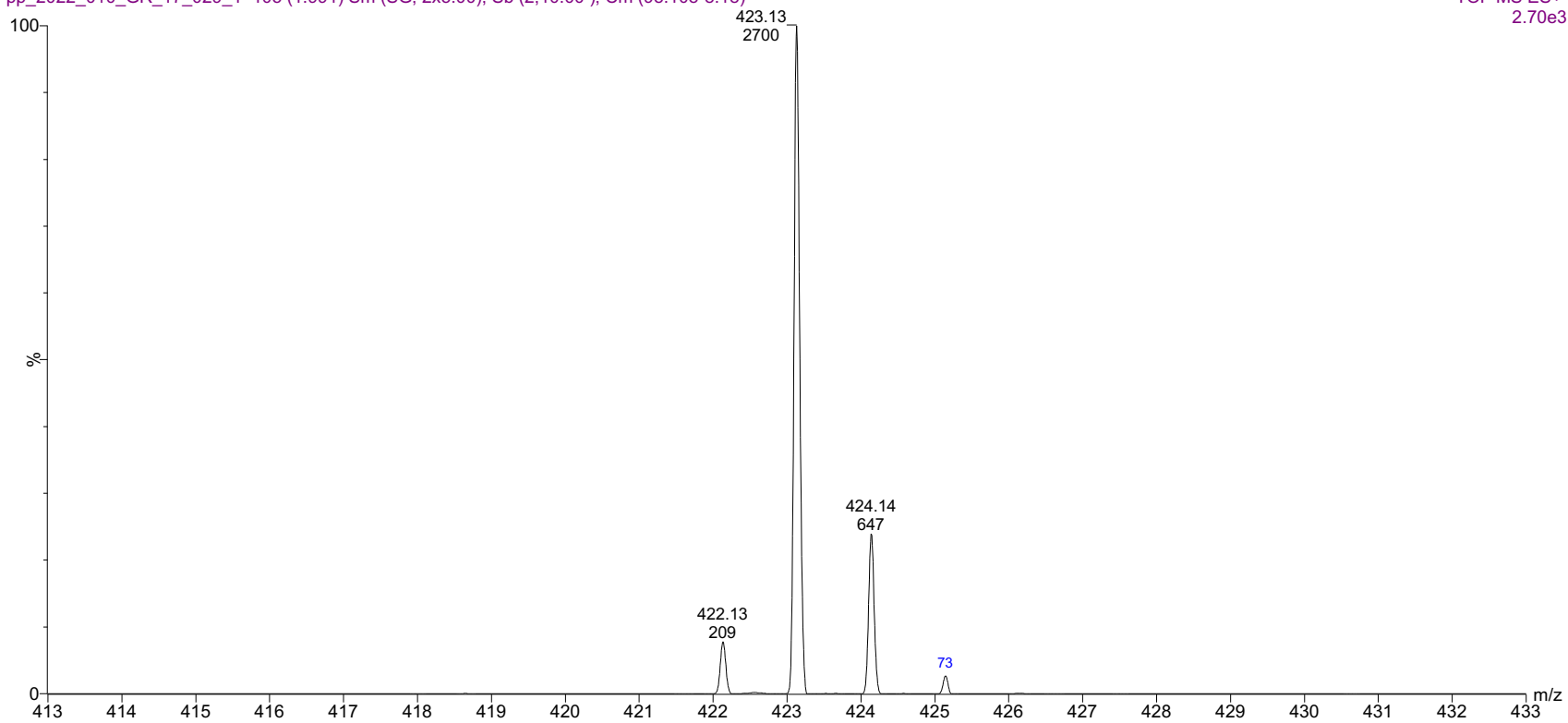


ESI-MS spectrum for sample GR-17-029. Shows monoisotopic [M+H]<sup>+</sup> mass.

04-Feb-2022, 17:04:30

TOF MS ES+  
2.70e3

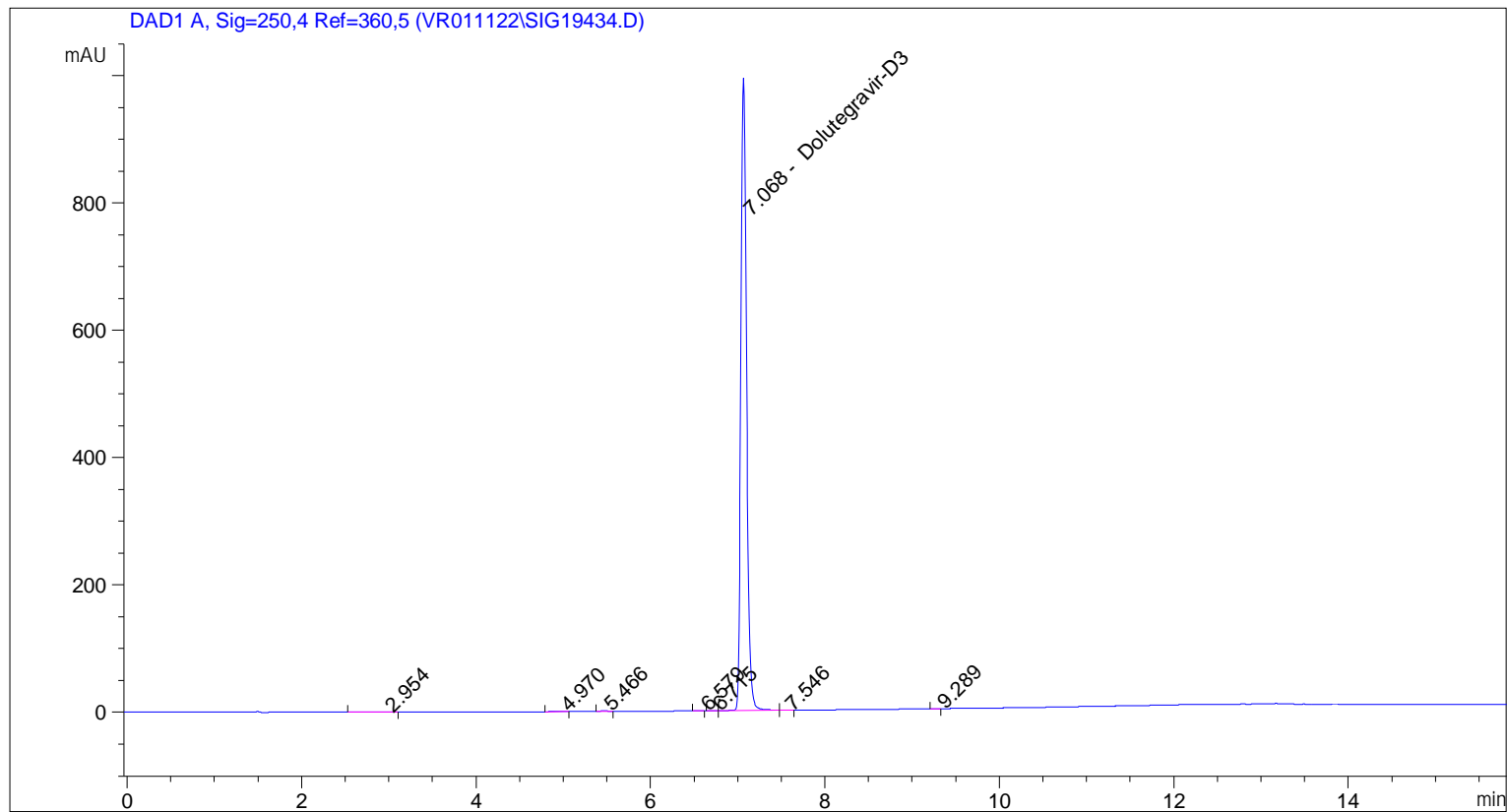
pp\_2022\_010\_GR\_17\_029\_1 105 (1.991) Sm (SG, 2x5.00); Sb (2,10.00 ); Cm (98:108-8:18)



Expansion of above showing intensity labels.

```

=====
Acq. Operator   : vrusu
Acq. Instrument : Instrument 1                Location : Vial 70
Injection Date  : 2/7/2022 8:30:10 AM
                                           Inj Volume : 5.0 µl
Acq. Method     : C:\CHEM32\1\METHODS\VR020722_029.M
Last changed    : 2/7/2022 8:29:17 AM by vrusu
Analysis Method : C:\CHEM32\1\METHODS\VR020722_029PM.M
Last changed    : 2/7/2022 9:19:16 AM by vrusu
  
```



Area Percent Report

```

Sorted By           :      Signal
Calib. Data Modified :      2/7/2022 8:54:04 AM
Multiplier:         :      1.0000
Dilution:           :      1.0000
Use Multiplier & Dilution Factor with ISTDs
  
```

Signal 1: DAD1 A, Sig=250,4 Ref=360,5

Peak #	RetTime [min]	Type	Width [min]	Area [mAU*s]	Area %	Name
1	2.954	BB	0.1642	1.92178	0.0427	?
2	4.970	BB	0.0879	1.72760	0.0384	?
3	5.466	BB	0.0698	6.18963	0.1376	?
4	6.579	BB	0.1118	6.31765e-1	0.0140	?
5	6.715	BV	0.0691	8.55682e-1	0.0190	?
6	7.068	VV	0.0707	4484.27393	99.6938	Dolutegravir-D3
7	7.546	VB	0.0834	1.96709	0.0437	?
8	9.289	BB	0.0624	4.77512e-1	0.0106	?

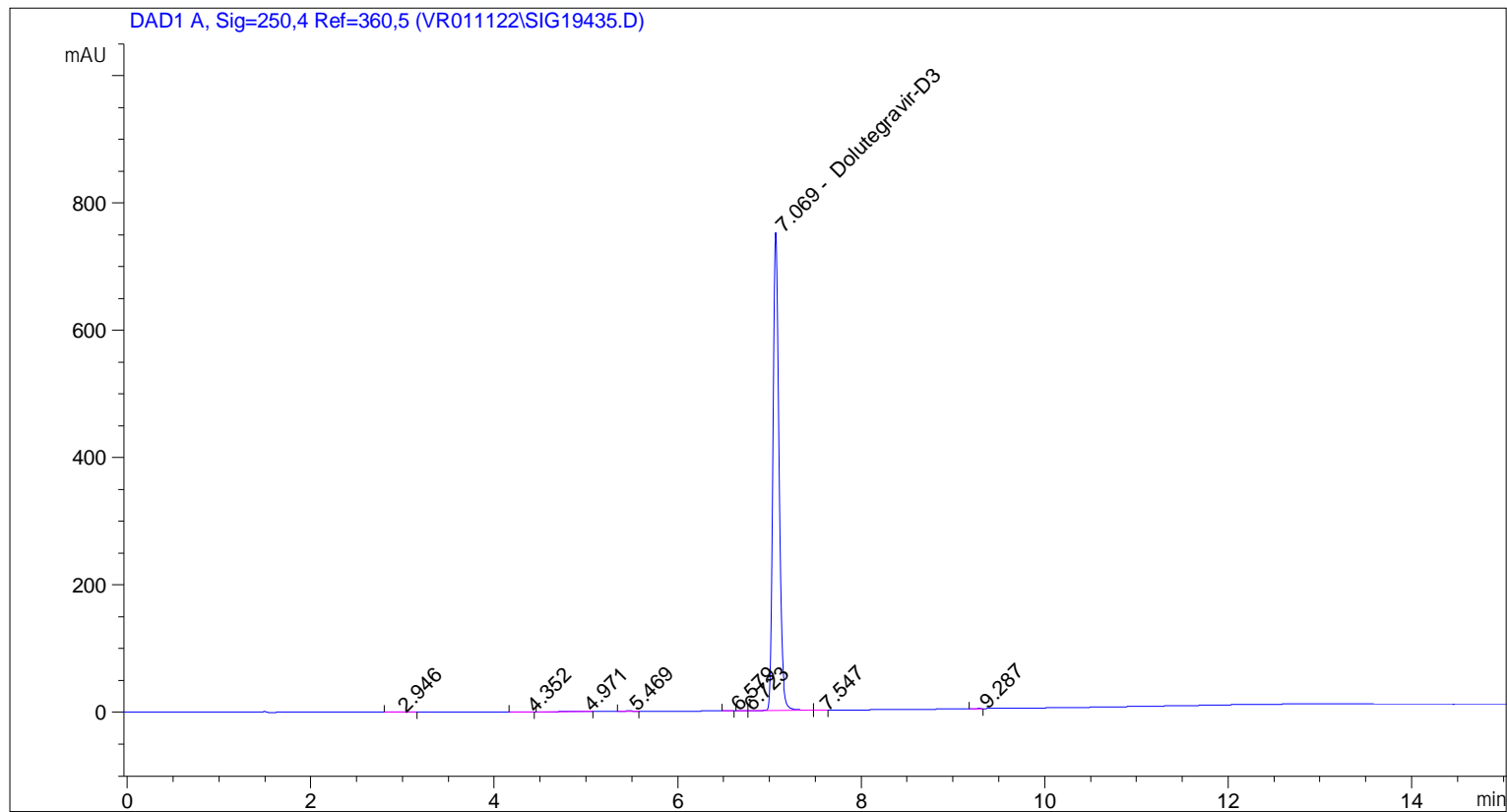
Sample Name: GR-17-029

Peak #	RetTime [min]	Type	Width [min]	Area [mAU*s]	Area %	Name
Totals :				4498.04499		

=====  
\*\*\* End of Report \*\*\*

```

=====
Acq. Operator   : vrusu
Acq. Instrument : Instrument 1                Location : Vial 71
Injection Date  : 2/7/2022 8:51:06 AM
                                           Inj Volume : 5.0 µl
Acq. Method     : C:\CHEM32\1\METHODS\VR020722_029.M
Last changed    : 2/7/2022 8:50:11 AM by vrusu
Analysis Method  : C:\CHEM32\1\METHODS\VR020722_029PM.M
Last changed    : 2/7/2022 9:19:16 AM by vrusu
  
```



Area Percent Report

```

Sorted By           :      Signal
Calib. Data Modified :      2/7/2022 8:54:04 AM
Multiplier:         :      1.0000
Dilution:           :      1.0000
Use Multiplier & Dilution Factor with ISTDs
  
```

Signal 1: DAD1 A, Sig=250,4 Ref=360,5

Peak #	RetTime [min]	Type	Width [min]	Area [mAU*s]	Area %	Name
1	2.946	BB	0.1321	9.92680e-1	0.0291	?
2	4.352	BB	0.0867	6.66962e-1	0.0195	?
3	4.971	BB	0.1102	2.00734	0.0588	?
4	5.469	BB	0.0699	4.73020	0.1387	?
5	6.579	BB	0.0945	4.89086e-1	0.0143	?
6	6.723	BV	0.0677	6.36476e-1	0.0187	?
7	7.069	VV	0.0708	3399.54834	99.6475	Dolutegravir-D3
8	7.547	VB	0.0787	1.74238	0.0511	?

Sample Name: GR-17-029 spl-2

Peak #	RetTime [min]	Type	Width [min]	Area [mAU*s]	Area %	Name
9	9.287	BB	0.0637	7.61310e-1	0.0223	?

Totals : 3411.57477

=====  
\*\*\* End of Report \*\*\*