

<b>Name:</b>	<b>Omeprazole Sulfide-D3</b>
<b>Lot#:</b>	GR-9-133
<b>Test Date:</b>	03/17/2022 (re-test date: 03/17/2027)
<b>CAS No.:</b>	922730-98-1
<b>MF:</b>	C <sub>17</sub> H <sub>16</sub> D <sub>3</sub> N <sub>3</sub> O <sub>2</sub> S
<b>MW:</b>	332.44
<b>Appearance:</b>	Pale yellow solid
<b>Purity:</b>	98.6% by HPLC (average of two sample preparations); 99% atom D
<b><sup>1</sup>H-NMR:</b>	Conforms
<b>MS-ESI (+)</b>	Conforms (shows peak at m/z = 333.14 [M+H] <sup>+</sup> )
<b>Storage</b>	Long term store at - 18° C in a dry place away from direct sunlight

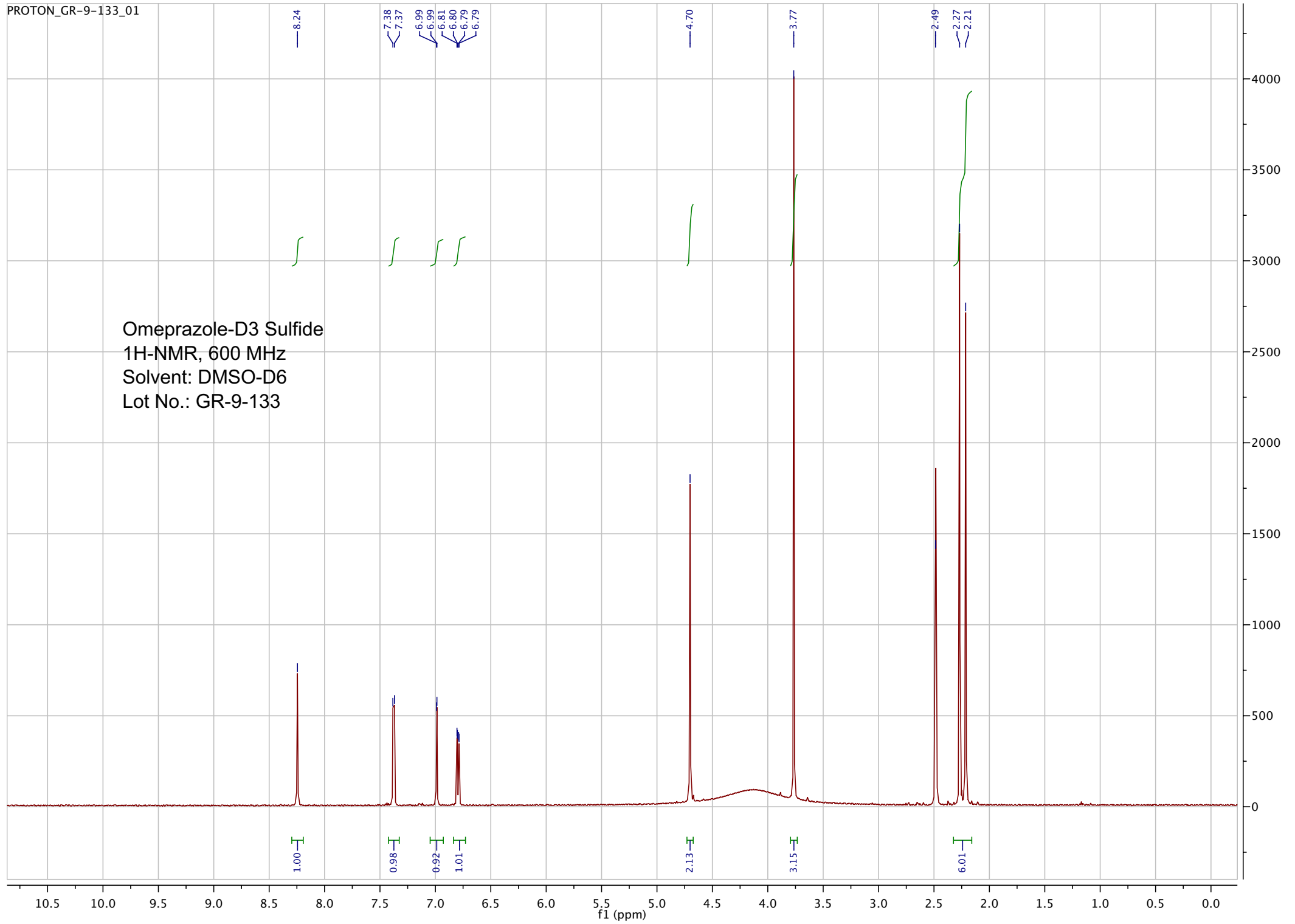
Approved by:

Date: 03/17/2022



Viorica Rusu, QC/QA Manager

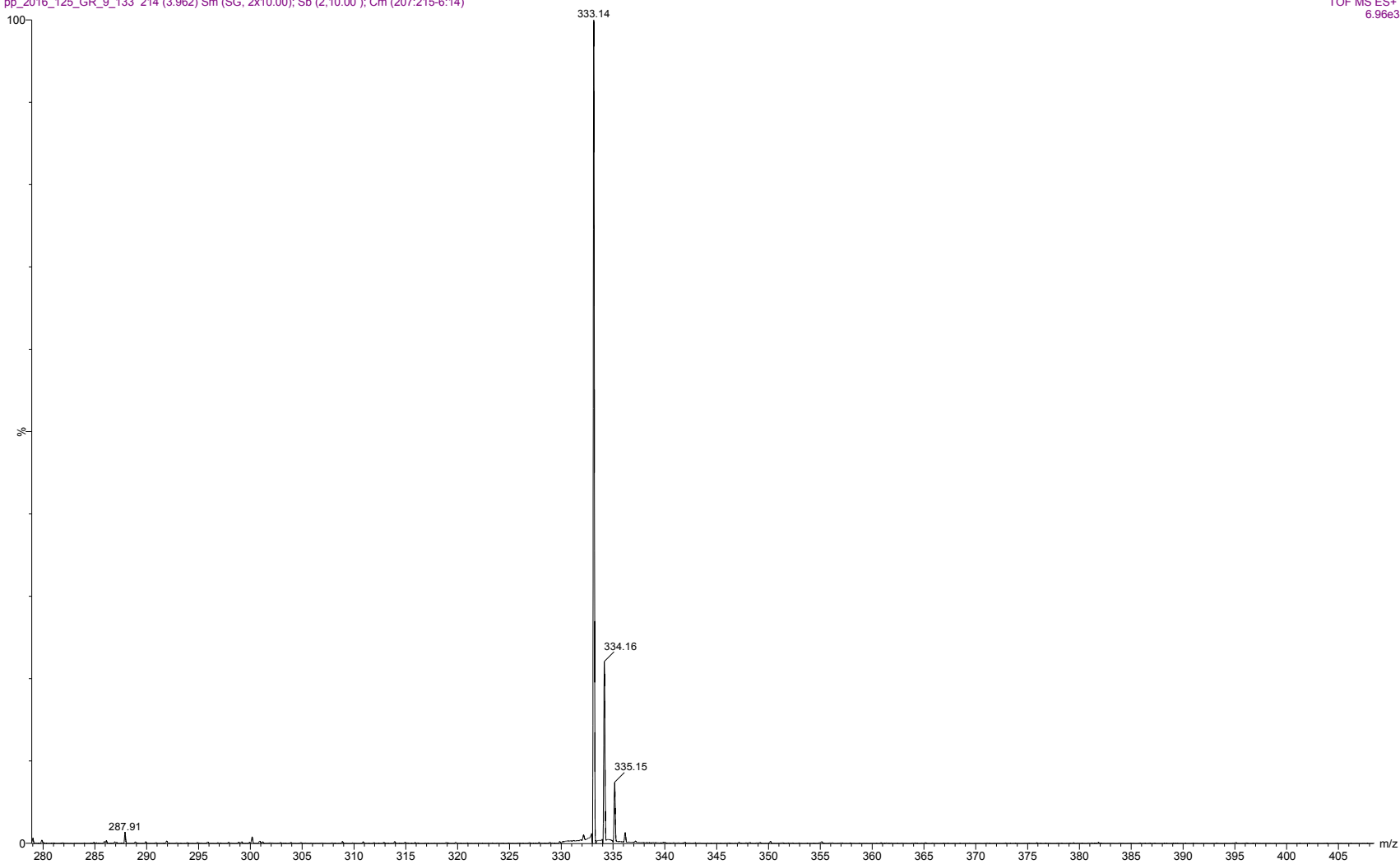
Omeprazole-D3 Sulfide  
1H-NMR, 600 MHz  
Solvent: DMSO-D6  
Lot No.: GR-9-133



pp\_2016\_125\_GR\_9\_133 214 (3.962) Sm (SG, 2x10.00); Sb (2,10.00 ); Cm (207:215-6:14)

7.0000000

17-Nov-2016, 18:29:16  
TOF MS ES+  
6.96e3

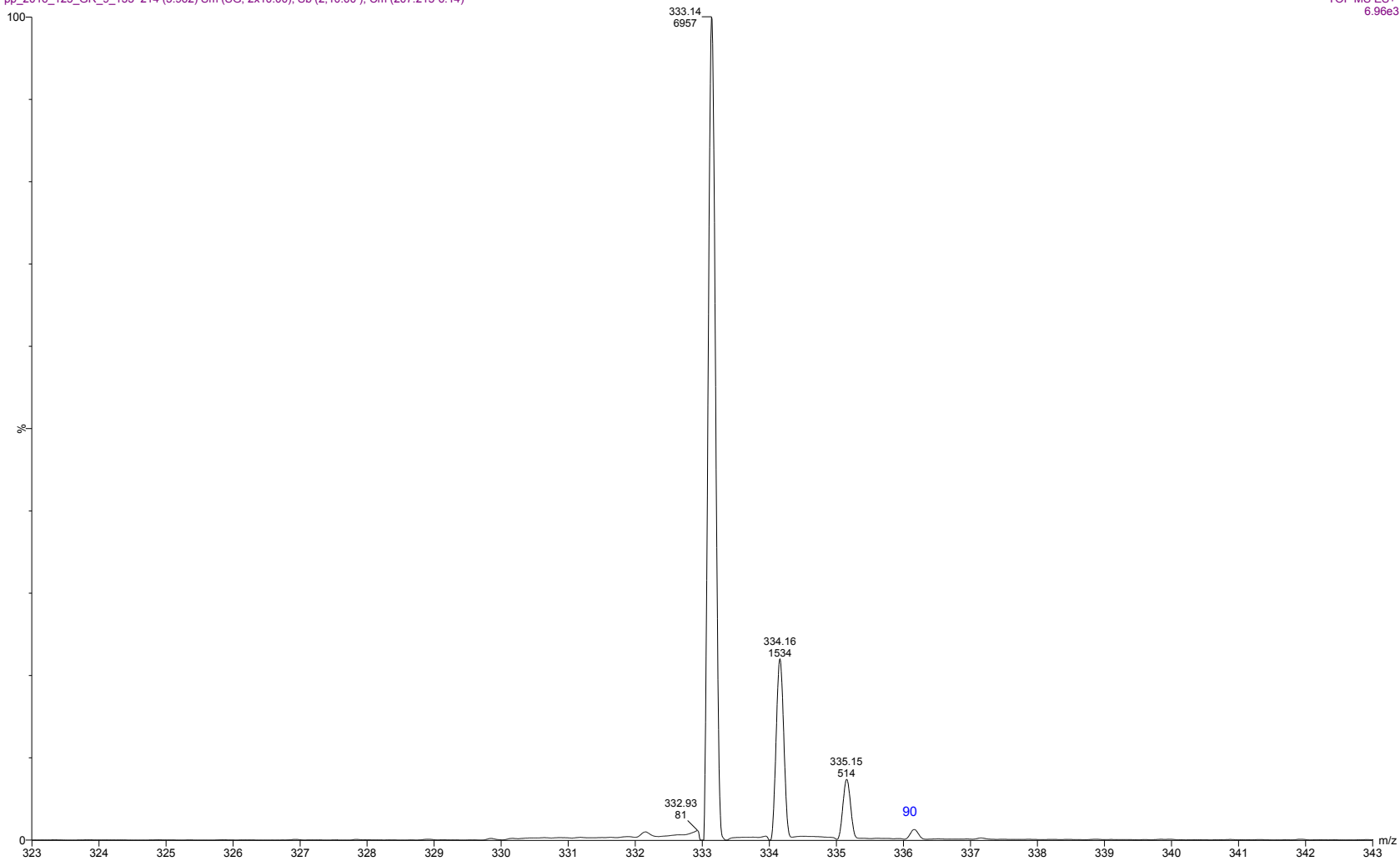


ESI-MS spectrum for sample GR-9-133. Shows monoisotopic [M+H]<sup>+</sup> mass.

pp\_2016\_125\_GR\_9\_133 214 (3.962) Sm (SG, 2x10.00); Sb (2,10.00 ); Cm (207:215-6:14)

7.0000000

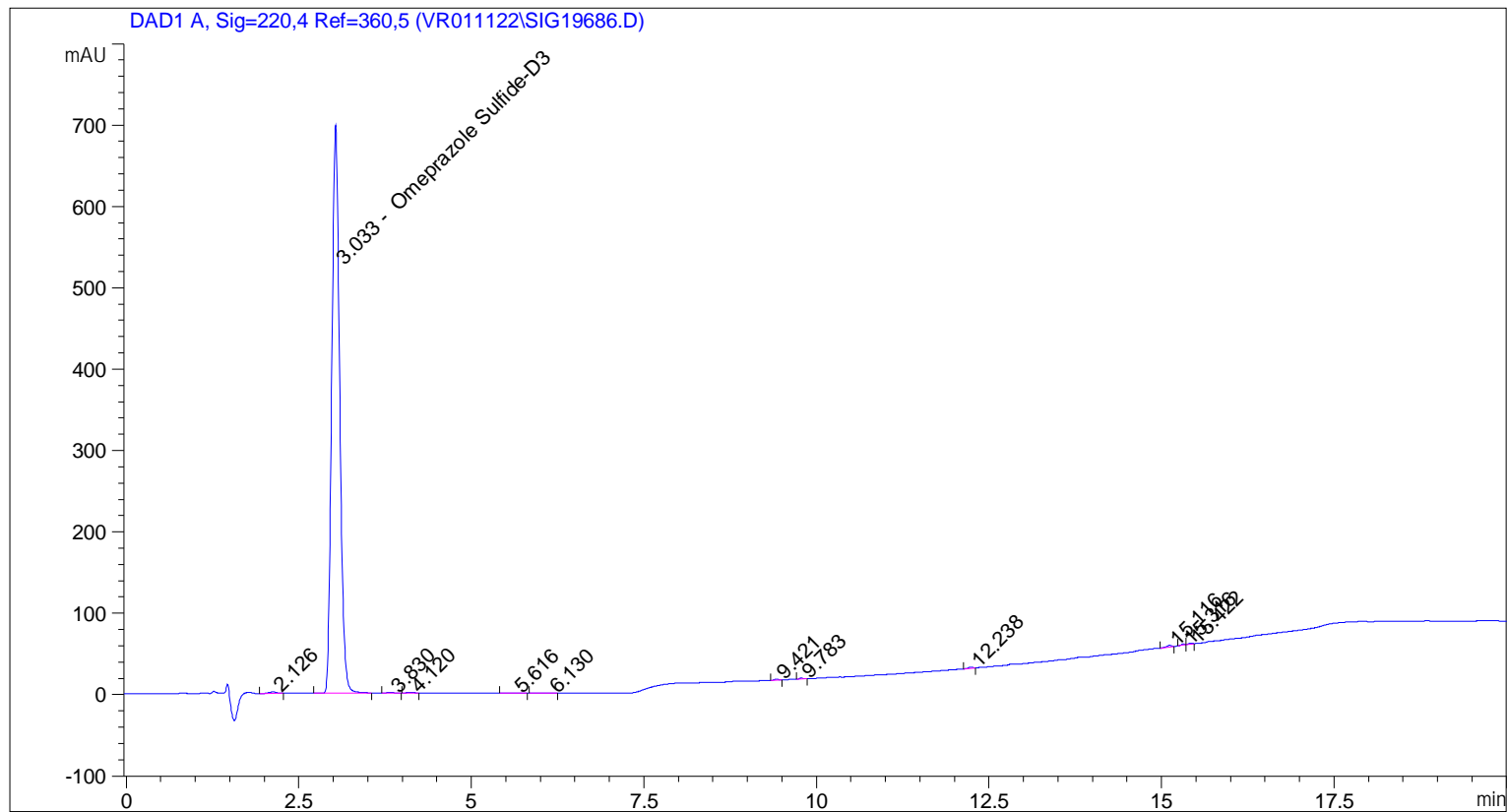
17-Nov-2016, 18:29:16  
TOF MS ES+  
6.96e3



Expansion of above with intensity labels.

```

=====
Acq. Operator   : vrusu
Acq. Instrument : Instrument 1                Location : Vial 76
Injection Date  : 3/17/2022 2:15:41 PM
                                           Inj Volume : 15.0 µl
Acq. Method     : C:\CHEM32\1\METHODS\VR031722_133.M
Last changed    : 3/17/2022 2:13:21 PM by vrusu
Analysis Method : C:\CHEM32\1\METHODS\VR031722_133PM.M
Last changed    : 3/17/2022 3:28:11 PM by vrusu
  
```



=====  
 Area Percent Report  
 =====

```

Sorted By           :      Signal
Calib. Data Modified :      3/17/2022 3:27:29 PM
Multiplier:         :      1.0000
Dilution:           :      1.0000
Use Multiplier & Dilution Factor with ISTDs
  
```

Signal 1: DAD1 A, Sig=220,4 Ref=360,5

Peak #	RetTime [min]	Type	Width [min]	Area [mAU*s]	Area %	Name
1	2.126	BB	0.1355	16.36748	0.2880	?
2	3.033	BB	0.1238	5612.89355	98.7782	Omeprazole Sulfide-D3
3	3.830	BB	0.1243	4.02813	0.0709	?
4	4.120	BB	0.1061	6.60329	0.1162	?
5	5.616	BB	0.1446	4.84699	0.0853	?
6	6.130	BB	0.1699	3.34952	0.0589	?
7	9.421	BB	0.0634	4.92010	0.0866	?
8	9.783	BB	0.0625	4.77846	0.0841	?

Sample Name: GR-9-133

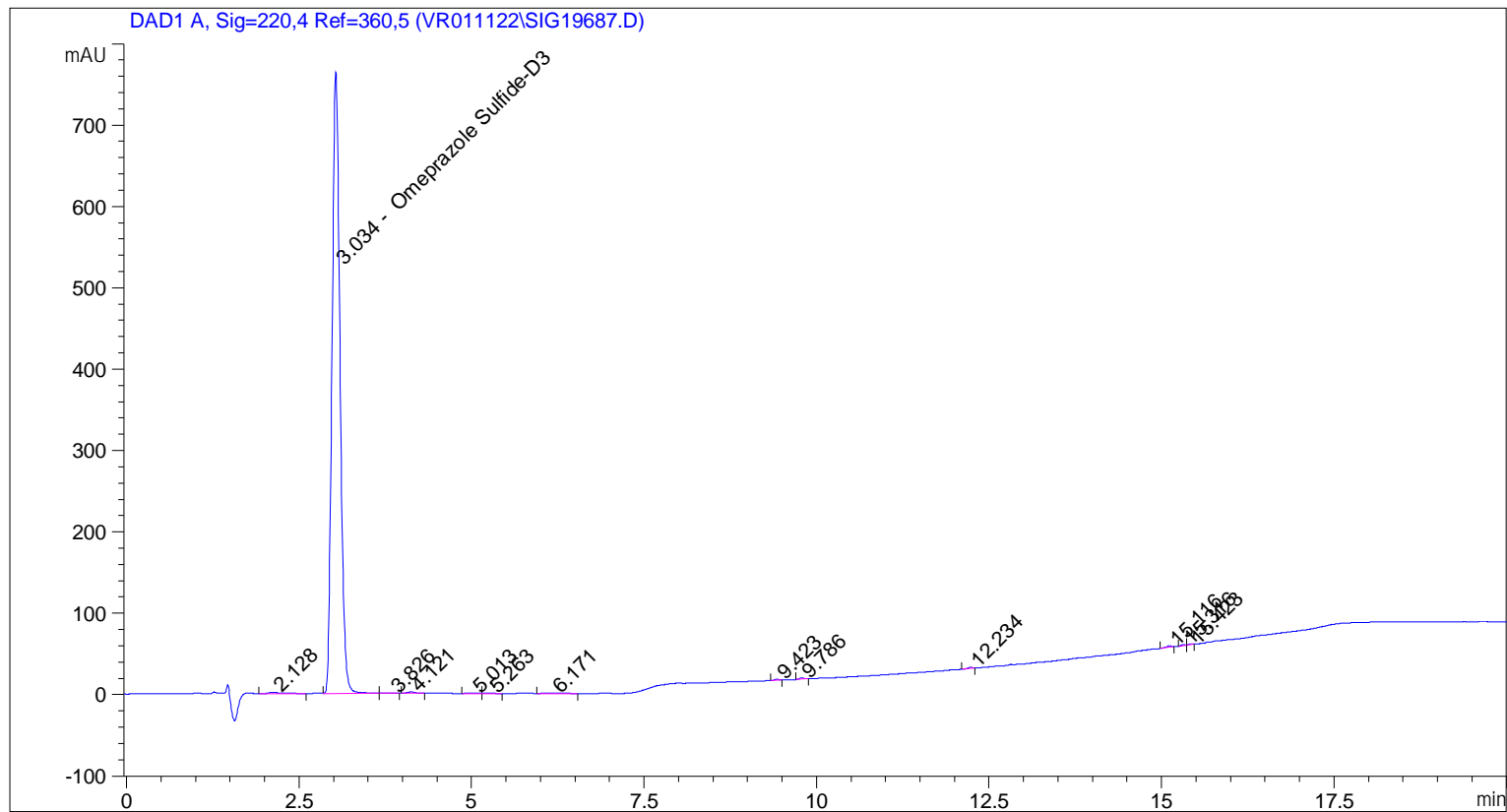
Peak #	RetTime [min]	Type	Width [min]	Area [mAU*s]	Area %	Name
9	12.238	BB	0.0688	5.34262	0.0940	?
10	15.116	BB	0.0722	9.09771	0.1601	?
11	15.316	BV	0.0582	5.14871	0.0906	?
12	15.422	VB	0.0591	4.94620	0.0870	?

Totals : 5682.32277

=====  
\*\*\* End of Report \*\*\*

```

=====
Acq. Operator   : vrusu
Acq. Instrument : Instrument 1                Location : Vial 77
Injection Date  : 3/17/2022 2:40:33 PM
                                           Inj Volume : 15.0 µl
Acq. Method    : C:\CHEM32\1\METHODS\VR031722_133.M
Last changed   : 3/17/2022 2:39:12 PM by vrusu
Analysis Method : C:\CHEM32\1\METHODS\VR031722_133PM.M
Last changed   : 3/17/2022 3:28:11 PM by vrusu
  
```



Area Percent Report

```

Sorted By      : Signal
Calib. Data Modified : 3/17/2022 3:27:29 PM
Multiplier:    : 1.0000
Dilution:     : 1.0000
Use Multiplier & Dilution Factor with ISTDs
  
```

Signal 1: DAD1 A, Sig=220,4 Ref=360,5

Peak #	RetTime [min]	Type	Width [min]	Area [mAU*s]	Area %	Name
1	2.128	BB	0.1823	25.99678	0.4155	?
2	3.034	VB	0.1220	6157.82422	98.4191	Omeprazole Sulfide-D3
3	3.826	BB	0.1197	4.25568	0.0680	?
4	4.121	BB	0.1282	13.18422	0.2107	?
5	5.013	BV	0.1452	4.70113	0.0751	?
6	5.263	VB	0.1244	3.34578	0.0535	?
7	6.171	BB	0.2222	11.76660	0.1881	?
8	9.423	BB	0.0635	5.22132	0.0835	?

Sample Name: GR-9-133 spl-2

Peak #	RetTime [min]	Type	Width [min]	Area [mAU*s]	Area %	Name
9	9.786	BB	0.0682	7.39642	0.1182	?
10	12.234	BB	0.0676	5.42613	0.0867	?
11	15.116	BB	0.0782	9.27214	0.1482	?
12	15.316	BV	0.0560	4.46597	0.0714	?
13	15.423	VB	0.0543	3.88276	0.0621	?

Totals : 6256.73915

=====  
\*\*\* End of Report \*\*\*