

**Name:** 2-(Cyclohexylcarbonyl-D11)-1,2,3,6,7,11b-hexahydro-4H-pyrazino[2,1-a]isoquinolin-4-one  
(Praziquantel-D11)

**Lot#:** GR-4-067-1

**Test Date:** 01/20/2022 (re-test date: 01/20/2027)

**CAS No.:** 55268-74-1 (unlabelled)

**MF:** C<sub>19</sub>H<sub>13</sub>D<sub>11</sub>N<sub>2</sub>O<sub>2</sub>

**MW:** 323.41

**Appearance:** White solid

**Purity:** 98.7% by HPLC (average of two sample preparations); >98% atom D

**<sup>1</sup>H-NMR:** Conforms (shows a mixture of rotamers)

**MS-ESI (+)** Conforms (shows peak at m/z = 324.32 [M+H]<sup>+</sup>)

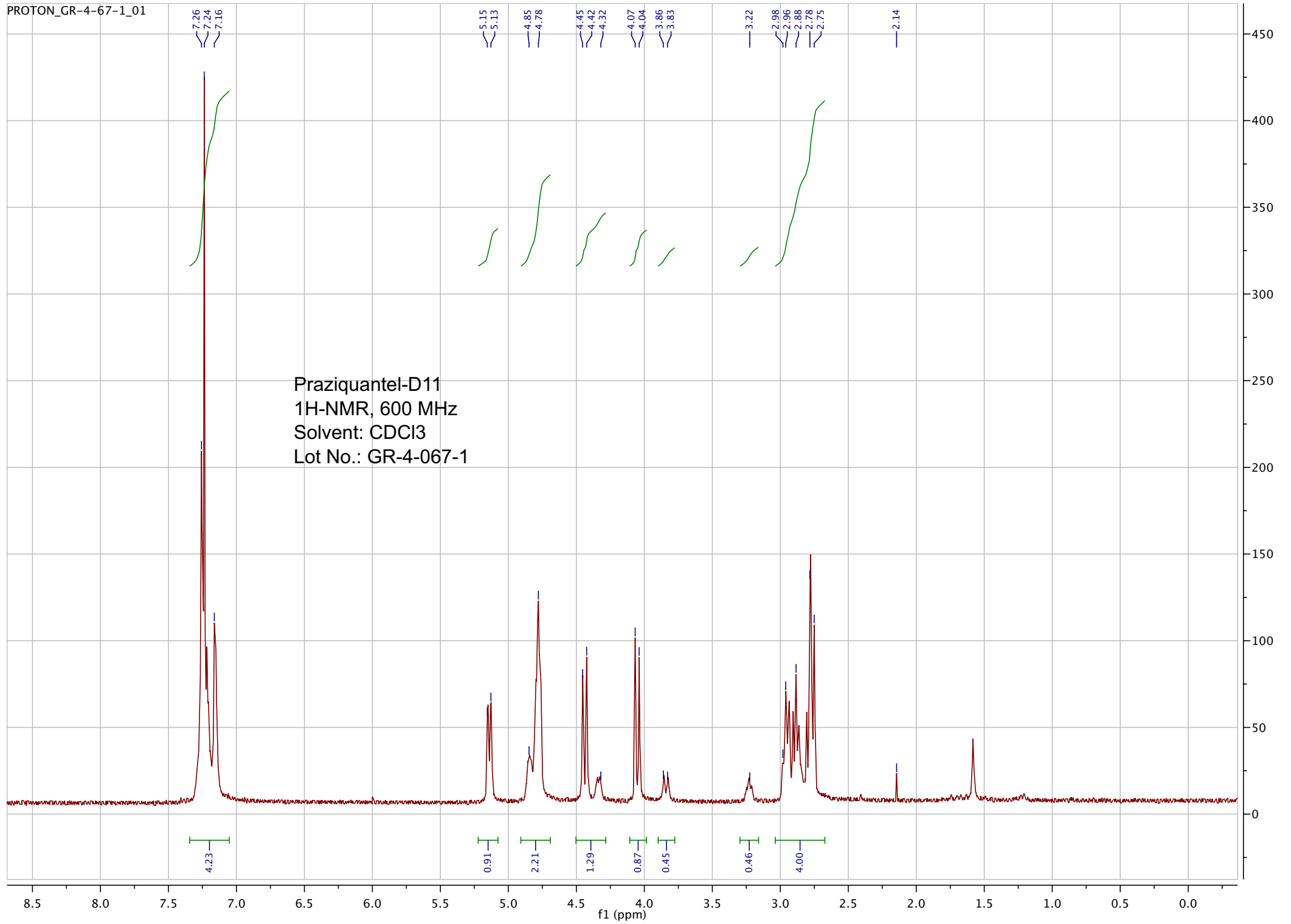
**Storage** Store at -18°C in a dry place away from direct sunlight

Approved by:

Date: 01/21/2022



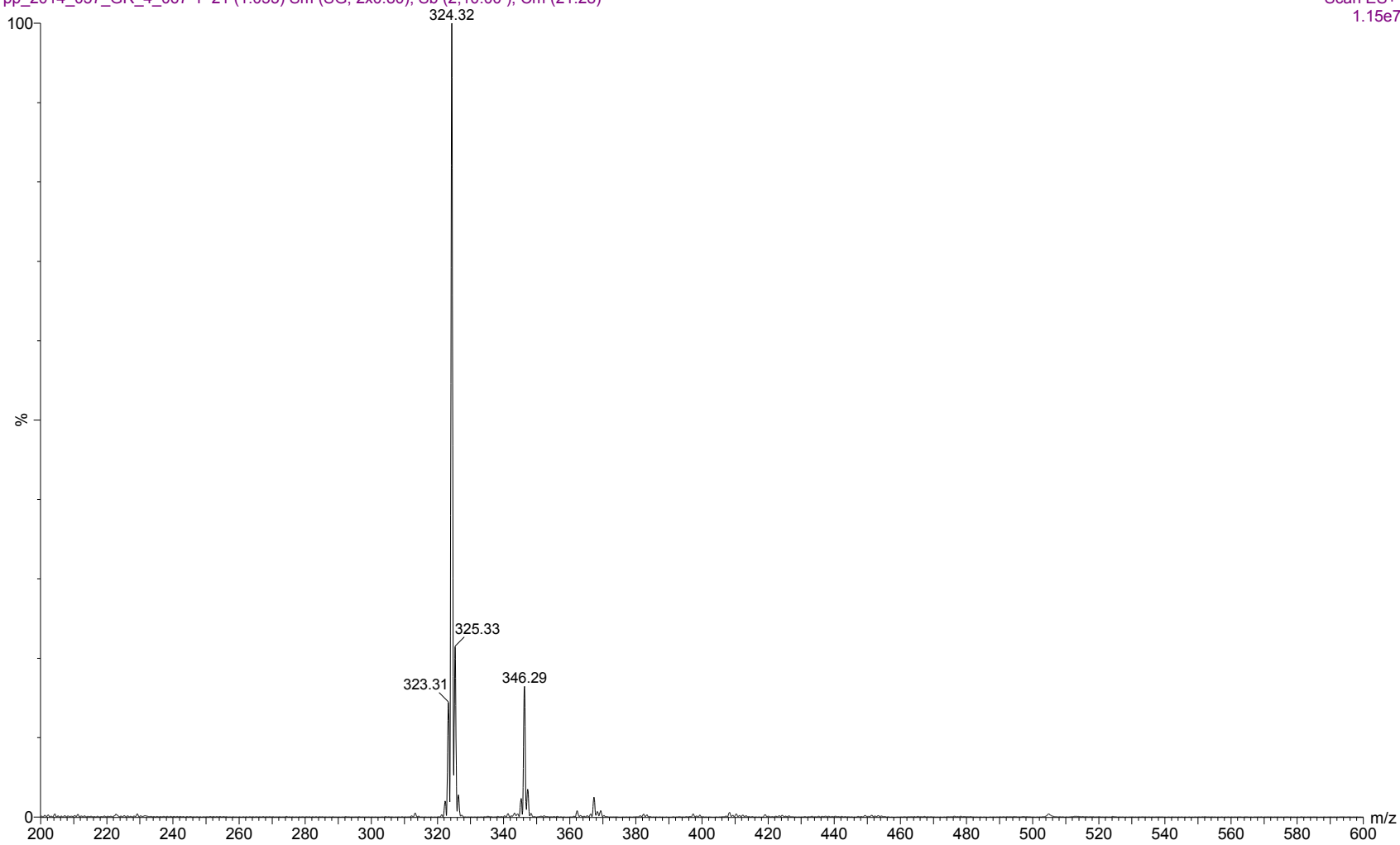
Viorica Rusu, QC/QA Manager



27-Oct-2016, 11:17:07

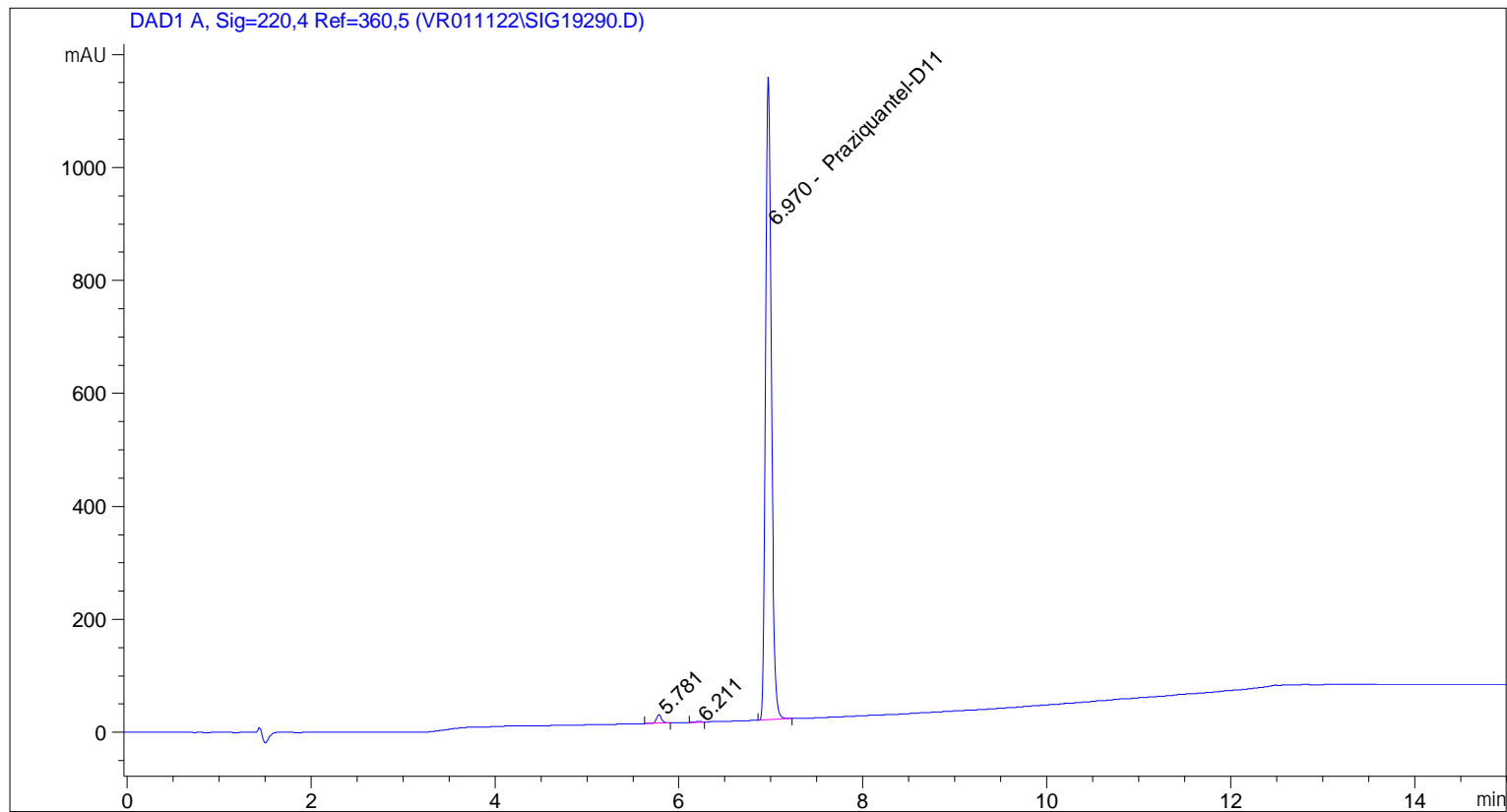
Scan ES+  
1.15e7

pp\_2014\_057\_GR\_4\_067-1 21 (1.053) Sm (SG, 2x0.80); Sb (2,10.00); Cm (21:28)



ESI-MS spectrum for sample GR-4-067-1. Shows monoisotopic [M+H]<sup>+</sup> mass.

=====  
Acq. Operator : vrusu  
Acq. Instrument : Instrument 1 Location : Vial 13  
Injection Date : 1/20/2022 9:21:18 AM Inj Volume : 5.0 µl  
Acq. Method : C:\CHEM32\1\METHODS\VR012022\_067.M  
Last changed : 1/20/2022 9:20:15 AM by vrusu  
Analysis Method : C:\CHEM32\1\METHODS\VR012022\_067PM.M  
Last changed : 1/20/2022 12:42:42 PM by vrusu



=====  
Area Percent Report  
=====

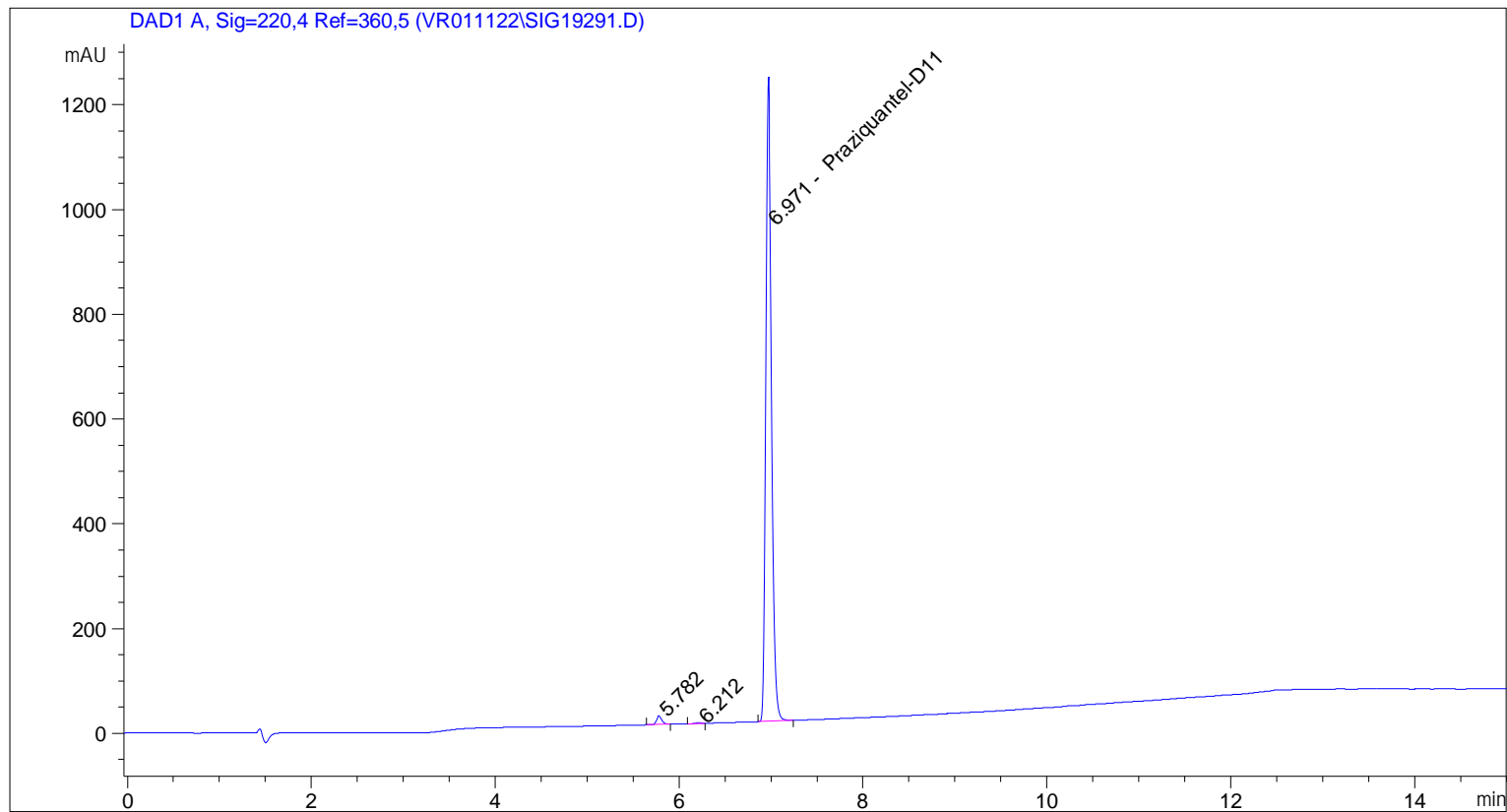
Sorted By : Signal  
Calib. Data Modified : 1/20/2022 12:41:39 PM  
Multiplier: : 1.0000  
Dilution: : 1.0000  
Use Multiplier & Dilution Factor with ISTDs

Signal 1: DAD1 A, Sig=220,4 Ref=360,5

Peak #	RetTime [min]	Type	Width [min]	Area [mAU*s]	Area %	Name
1	5.781	BB	0.0639	61.37565	1.2025	?
2	6.211	BB	0.0624	4.30914	0.0844	?
3	6.970	BB	0.0696	5038.26855	98.7131	Praziquantel-D11

Totals : 5103.95335

=====  
Acq. Operator : vrusu  
Acq. Instrument : Instrument 1 Location : Vial 14  
Injection Date : 1/20/2022 9:43:20 AM Inj Volume : 5.0 µl  
Acq. Method : C:\CHEM32\1\METHODS\VR012022\_067.M  
Last changed : 1/20/2022 9:42:24 AM by vrusu  
Analysis Method : C:\CHEM32\1\METHODS\VR012022\_067PM.M  
Last changed : 1/20/2022 12:42:42 PM by vrusu



=====  
Area Percent Report  
=====

Sorted By : Signal  
Calib. Data Modified : 1/20/2022 12:41:39 PM  
Multiplier: : 1.0000  
Dilution: : 1.0000  
Use Multiplier & Dilution Factor with ISTDs

Signal 1: DAD1 A, Sig=220,4 Ref=360,5

Peak #	RetTime [min]	Type	Width [min]	Area [mAU*s]	Area %	Name
1	5.782	BB	0.0639	67.88544	1.2200	?
2	6.212	BB	0.0630	5.10701	0.0918	?
3	6.971	BB	0.0700	5491.54248	98.6883	Praziquantel-D11

Totals : 5564.53493