

Name:	9α-Bromo Desonide-21-Acetate
Lot#:	GR-17-113
Test Date:	04/01/2022 (re-test date: 04/01/2027)
CAS No.:	5016-80-8
MF:	C ₂₆ H ₃₃ BrO ₇
MW:	537.45
Appearance:	Off-White Solid
Purity:	97.4% by HPLC (average of two sample preparations)
¹H-NMR:	Conforms (shows some THF)
MS-ESI (+)	Conforms (shows peaks at m/z = 519.1&521.1 [M-H ₂ O+H] ⁺ , 537.1&539.1 [M+H] ⁺ , 559.1&561.1 [M+Na] ⁺ , exhibits the expected isotope pattern for mono-bromo compounds)
Storage	Store at -18°C in a dry place away from direct sunlight

Approved by:

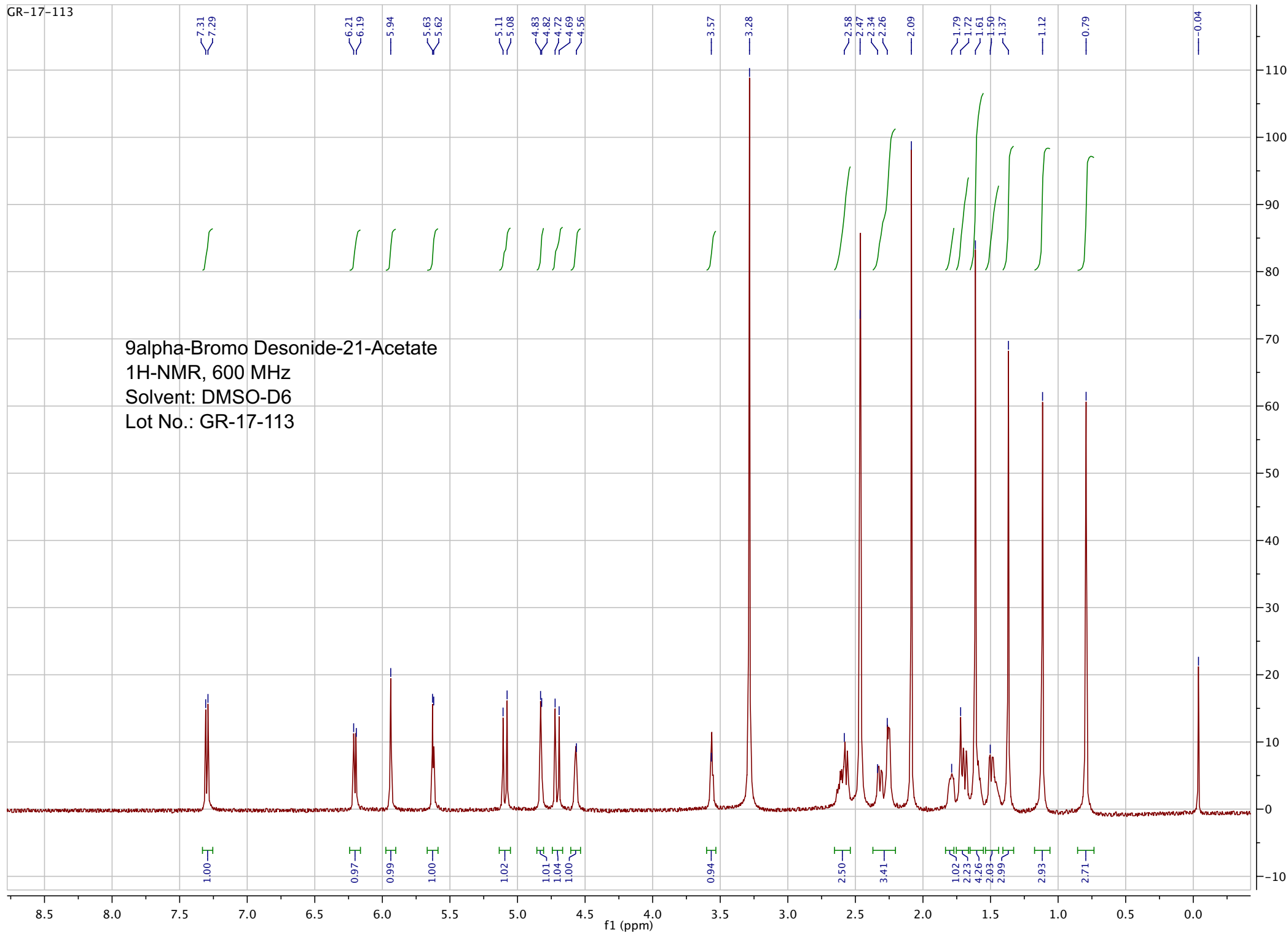
Date: 04/05/2022



Viorica Rusu, QC/QA Manager

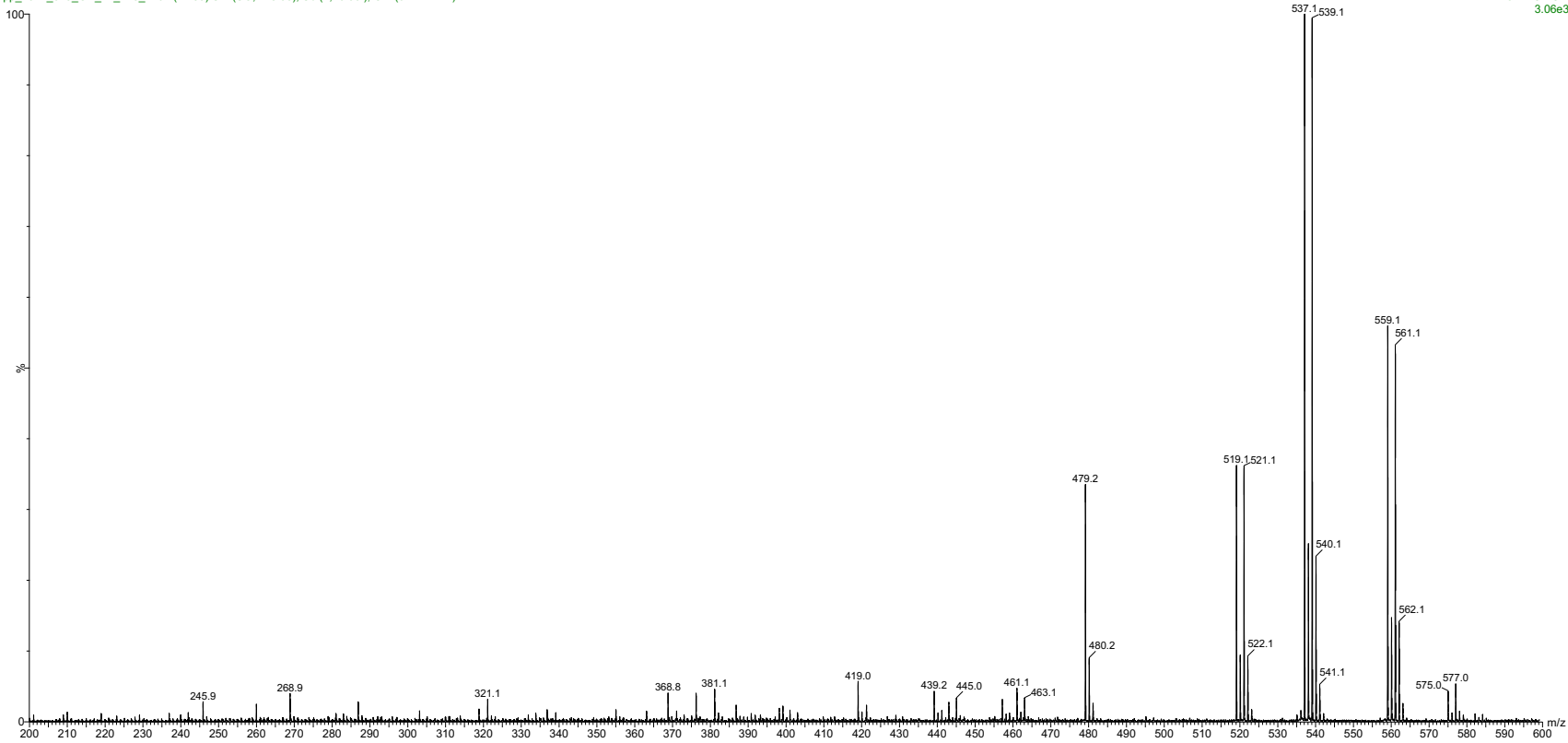
GR-17-113

9alpha-Bromo Desonide-21-Acetate
1H-NMR, 600 MHz
Solvent: DMSO-D6
Lot No.: GR-17-113



04-Apr-2022, 14:01:11
TOF MS ES+
3.06e3

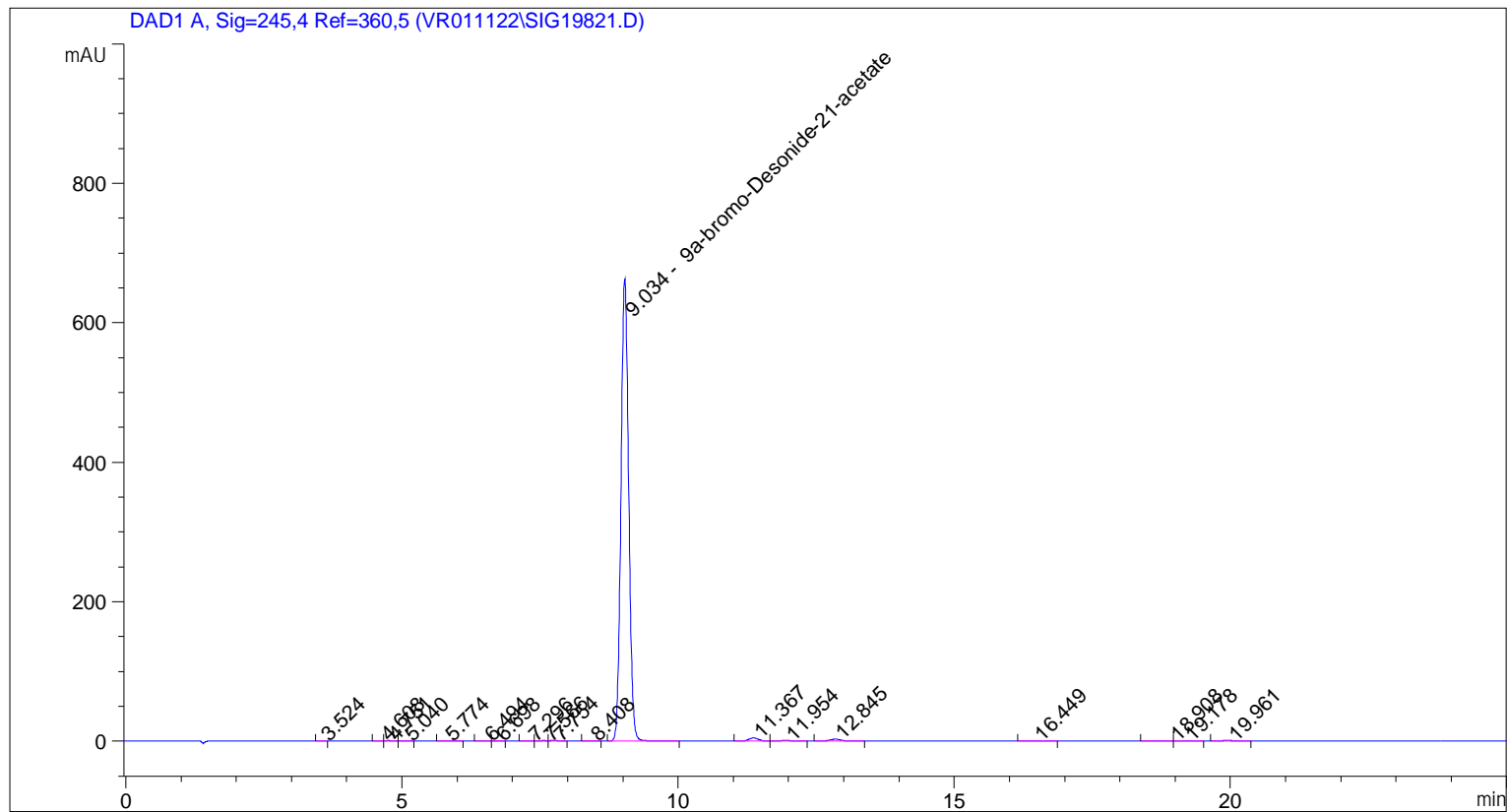
pp_2022_025_GR_17_113_1 62 (1.180) Sm (SG, 2x5.00); Sb (2,10.00); Cm (62:72-7:17)



ESI-MS spectrum for sample GR-17-113. Shows monoisotopic $[M+H]^+$ mass.

```

=====
Acq. Operator   : vrusu
Acq. Instrument : Instrument 1                Location : Vial 66
Injection Date  : 4/1/2022 2:04:01 PM
                                           Inj Volume : 10.0 µl
Acq. Method     : C:\CHEM32\1\METHODS\VR040122_113.M
Last changed    : 4/1/2022 2:02:57 PM by vrusu
Analysis Method : C:\CHEM32\1\METHODS\VR040122_113PM.M
Last changed    : 4/1/2022 2:36:39 PM by vrusu
  
```



=====
 Area Percent Report
 =====

```

Sorted By           :      Signal
Calib. Data Modified :      4/1/2022 2:33:04 PM
Multiplier:         :      1.0000
Dilution:           :      1.0000
Use Multiplier & Dilution Factor with ISTDs
  
```

Signal 1: DAD1 A, Sig=245,4 Ref=360,5

Peak #	RetTime [min]	Type	Width [min]	Area [mAU*s]	Area %	Name
1	3.524	BV	0.0755	2.09879	0.0318	?
2	4.608	BV	0.0856	2.42962	0.0368	?
3	4.751	VV	0.0974	4.57826	0.0694	?
4	5.040	VB	0.1072	1.23654	0.0187	?
5	5.774	BB	0.1333	2.78349	0.0422	?
6	6.494	BV	0.1382	2.61466	0.0396	?
7	6.698	VB	0.1090	1.01998	0.0155	?
8	7.296	BV	0.1124	9.31481e-1	0.0141	?

Sample Name: GR-17-113 spl-1

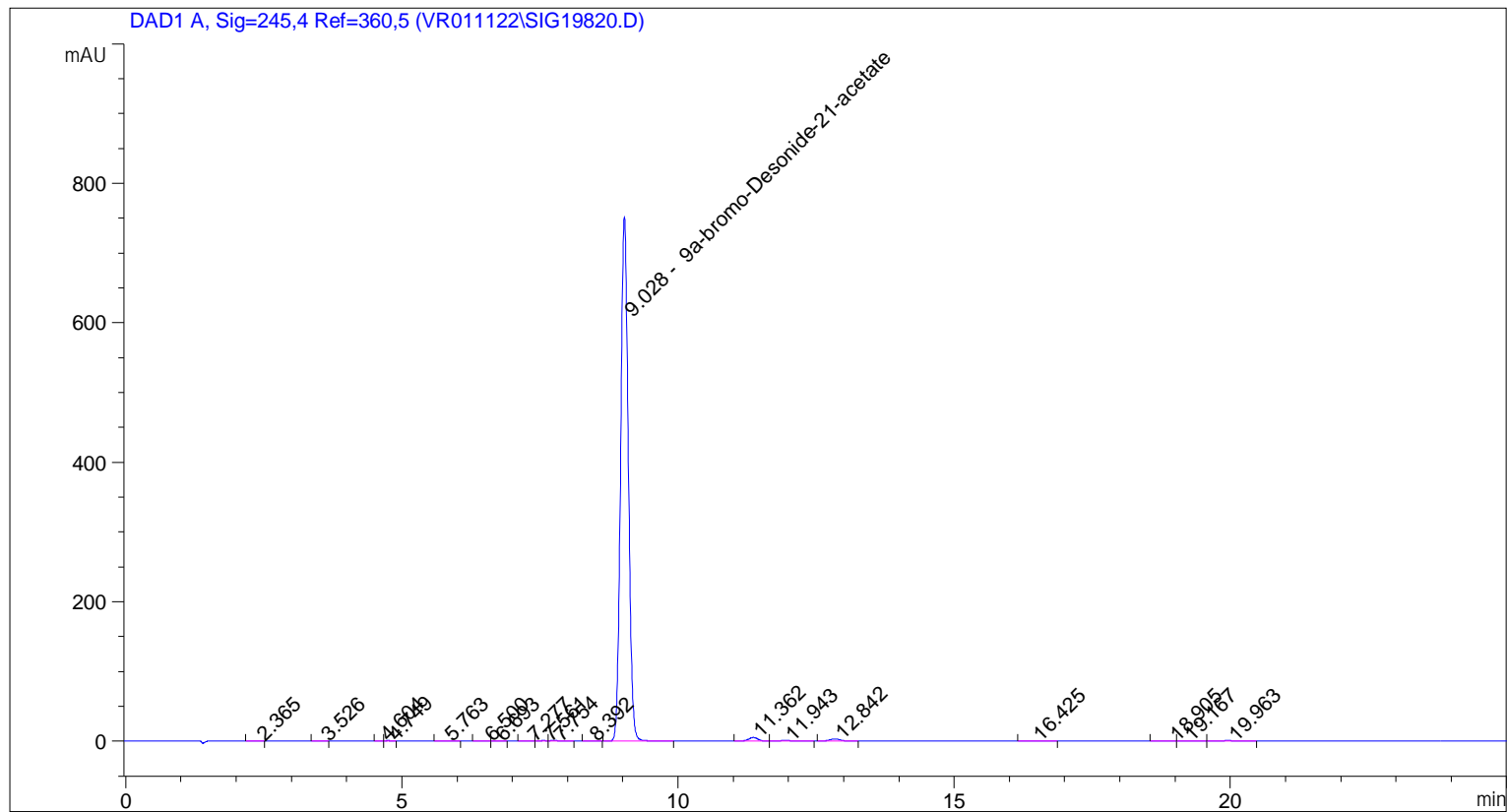
Peak #	RetTime [min]	Type	Width [min]	Area [mAU*s]	Area %	Name
9	7.566	VV	0.1252	5.71896	0.0867	?
10	7.754	VB	0.1315	9.42889	0.1430	?
11	8.408	BB	0.1176	9.02001e-1	0.0137	?
12	9.034	BB	0.1511	6423.62988	97.3971	9a-bromo-Desonide-21-acetate
13	11.367	BB	0.1843	54.32534	0.8237	?
14	11.954	BB	0.1943	10.72741	0.1627	?
15	12.845	BB	0.2076	36.83480	0.5585	?
16	16.449	BB	0.2288	6.30264	0.0956	?
17	18.908	BV	0.2038	6.99212	0.1060	?
18	19.178	VV	0.2782	9.68027	0.1468	?
19	19.961	BB	0.2455	13.06076	0.1980	?

Totals : 6595.29591

=====
*** End of Report ***

```

=====
Acq. Operator   : vrusu
Acq. Instrument : Instrument 1                Location : Vial 65
Injection Date  : 4/1/2022 1:33:13 PM
                                           Inj Volume : 10.0 µl
Acq. Method    : C:\CHEM32\1\METHODS\VR040122_113.M
Last changed   : 4/1/2022 1:32:12 PM by vrusu
Analysis Method: C:\CHEM32\1\METHODS\VR040122_113PM.M
Last changed   : 4/1/2022 2:34:25 PM by vrusu
  
```



Area Percent Report

```

Sorted By           : Signal
Calib. Data Modified : 4/1/2022 2:33:04 PM
Multiplier:         : 1.0000
Dilution:           : 1.0000
Use Multiplier & Dilution Factor with ISTDs
  
```

Signal 1: DAD1 A, Sig=245,4 Ref=360,5

Peak #	RetTime [min]	Type	Width [min]	Area [mAU*s]	Area %	Name
1	2.365	BV	0.1234	1.00783	0.0135	?
2	3.526	BB	0.0772	2.99892	0.0401	?
3	4.604	BV	0.0822	2.60961	0.0349	?
4	4.749	VB	0.0939	4.87271	0.0652	?
5	5.763	BB	0.1254	3.38306	0.0453	?
6	6.500	BV	0.1359	3.41375	0.0457	?
7	6.693	VB	0.1068	1.30120	0.0174	?
8	7.277	BV	0.1173	1.36937	0.0183	?

Sample Name: GR-17-113 spl-2

Peak #	RetTime [min]	Type	Width [min]	Area [mAU*s]	Area %	Name
9	7.561	VV	0.1224	6.32228	0.0846	?
10	7.754	VB	0.1338	11.13296	0.1490	?
11	8.392	BB	0.1210	1.07746	0.0144	?
12	9.028	BB	0.1509	7272.91357	97.3265	9a-bromo-Desonide-21-acetate
13	11.362	BV	0.1851	62.15718	0.8318	?
14	11.943	VB	0.1991	14.88042	0.1991	?
15	12.842	BB	0.2145	41.80918	0.5595	?
16	16.425	BB	0.1999	7.07582	0.0947	?
17	18.905	VV	0.2304	9.66946	0.1294	?
18	19.167	VB	0.2381	9.48653	0.1269	?
19	19.963	BB	0.2559	15.21606	0.2036	?

Totals : 7472.69739

=====
*** End of Report ***