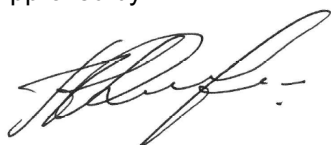


<b>Name:</b>	<b>9α-Bromo Desonide</b>
<b>Lot#:</b>	GR-17-115
<b>Test Date:</b>	04/04/2022 (re-test date: 04/04/2027)
<b>CAS No.:</b>	39672-77-0
<b>MF:</b>	C <sub>24</sub> H <sub>31</sub> BrO <sub>6</sub>
<b>MW:</b>	495.40
<b>Appearance:</b>	Off-White Solid
<b>Purity:</b>	97.1% by HPLC (average of two sample preparations)
<b><sup>1</sup>H-NMR:</b>	Conforms (shows a trace of THF)
<b>MS-ESI (+)</b>	Conforms (shows peaks at m/z = 477.1&479.1 [M-H <sub>2</sub> O+H] <sup>+</sup> , 495.1&497.1 [M+H] <sup>+</sup> , 517.1&519.1 [M+Na] <sup>+</sup> , exhibits the expected isotope pattern for mono-bromo compounds)
<b>Storage</b>	Store at -18°C in a dry place away from direct sunlight

Approved by:

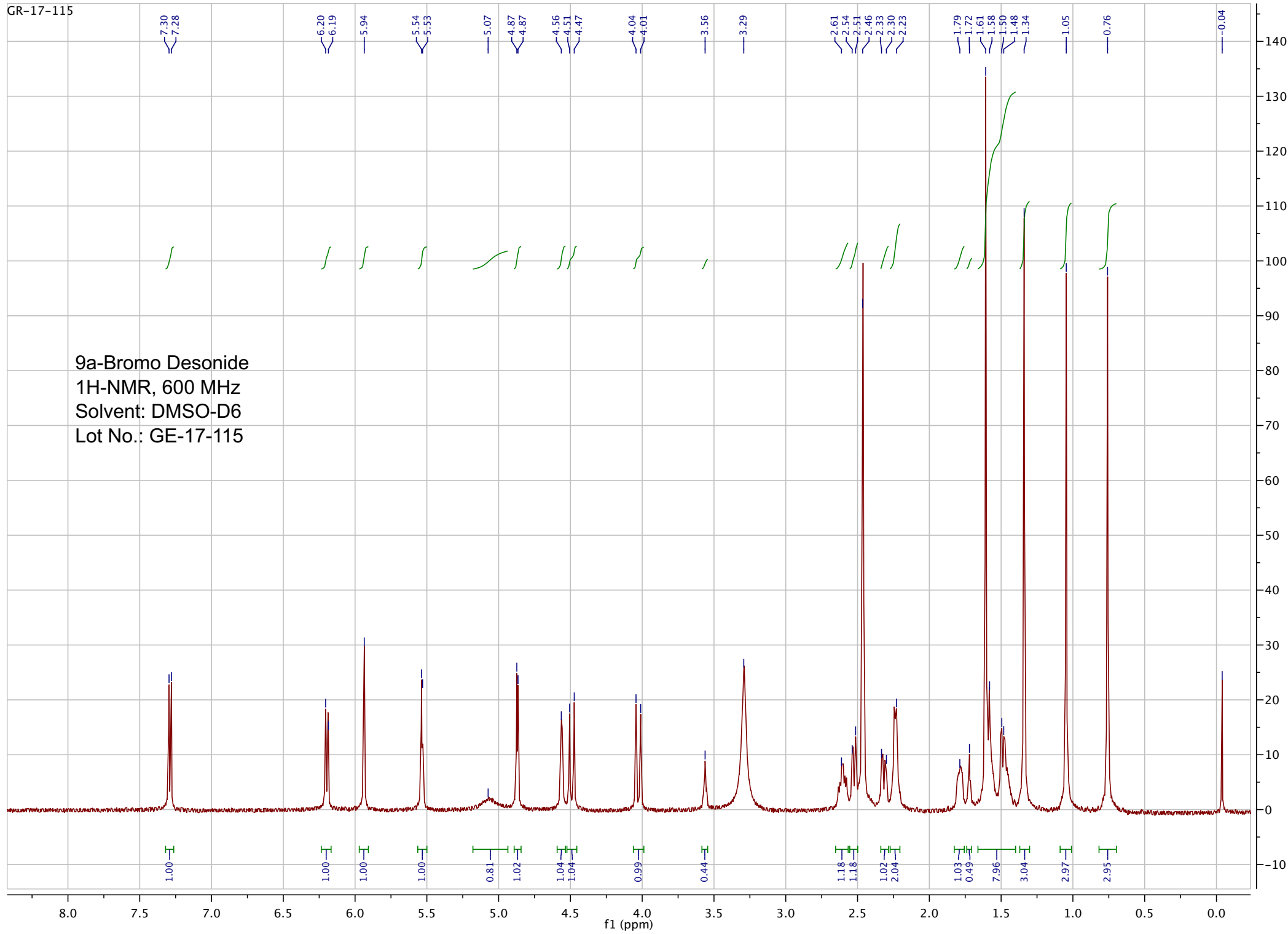
Date: 04/05/2022



Viorica Rusu, QC/QA Manager

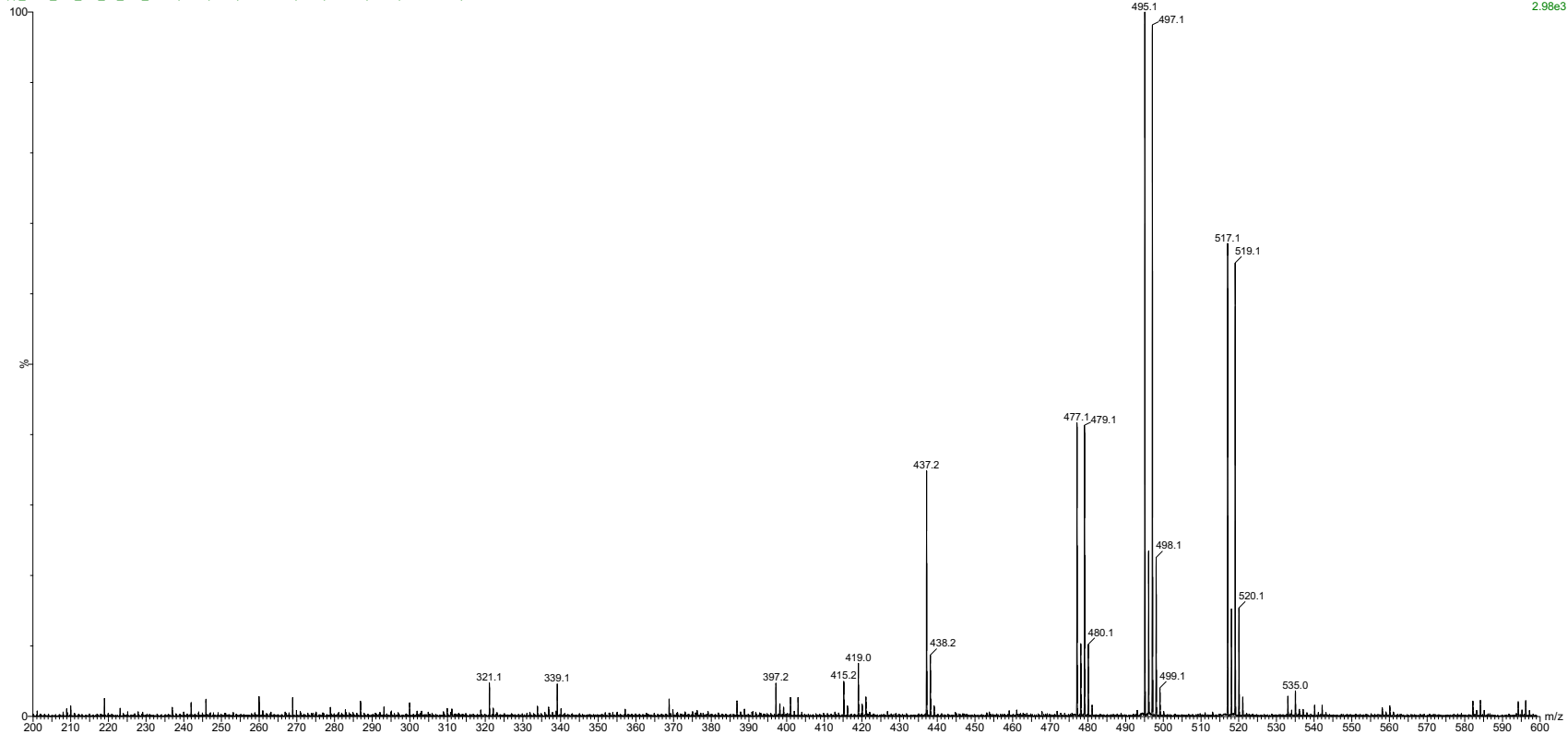
GR-17-115

9a-Bromo Desonide  
1H-NMR, 600 MHz  
Solvent: DMSO-D6  
Lot No.: GE-17-115



04-Apr-2022, 14:26:11  
TOF MS ES+  
2.98e3

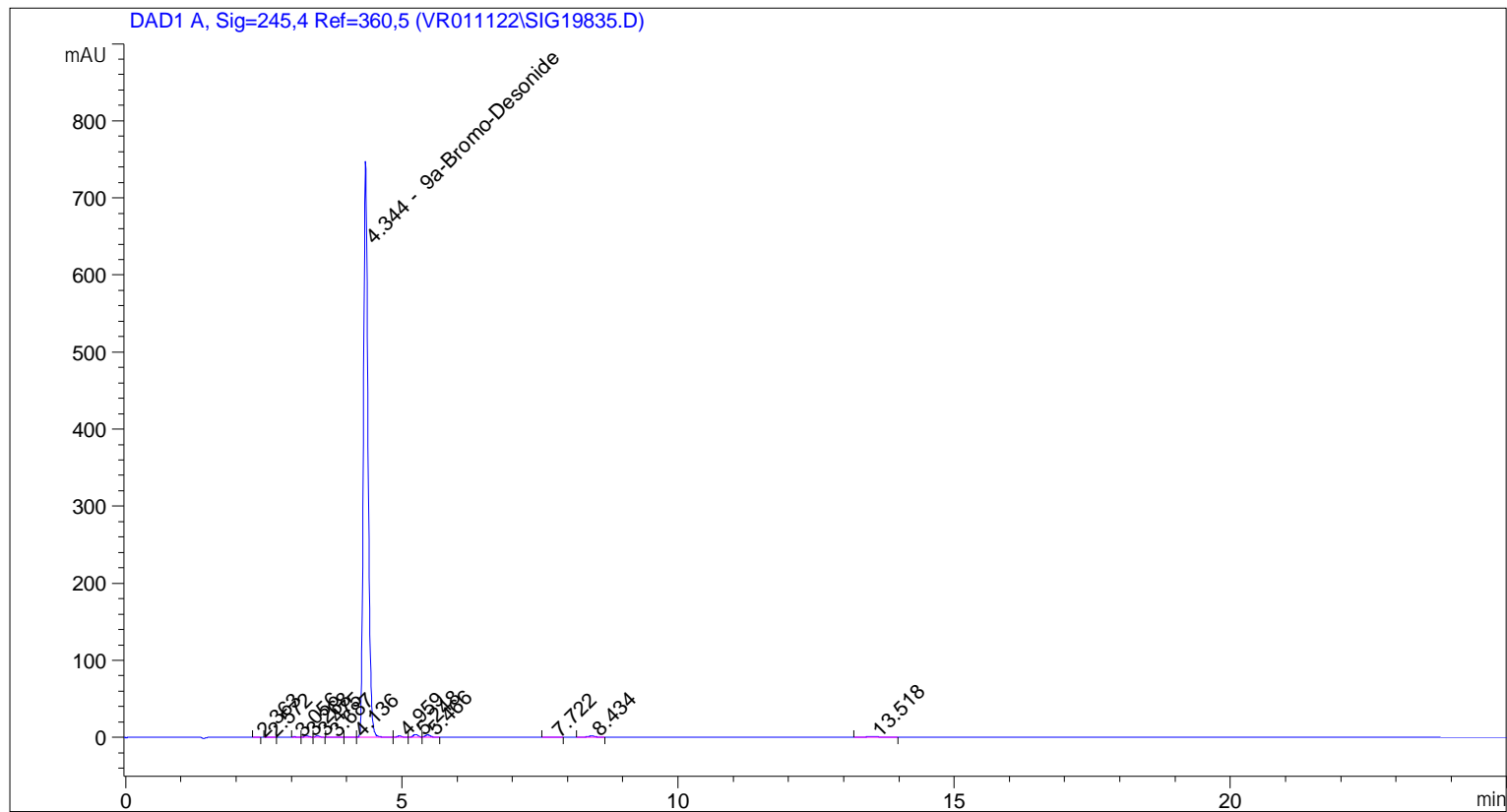
pp\_2022\_025\_GR\_17\_115\_1 76 (1.445) Sm (SG, 2x5.00); Sb (2,10.00); Cm (75:85-15:25)



ESI-MS spectrum for sample GR-17-115. Shows monoisotopic [M+H]<sup>+</sup> mass.

```

=====
Acq. Operator   : vrusu
Acq. Instrument : Instrument 1                Location : Vial 77
Injection Date  : 4/4/2022 2:32:26 PM
                                           Inj Volume : 5.0 µl
Acq. Method     : C:\CHEM32\1\METHODS\VR040422_115.M
Last changed    : 4/4/2022 2:31:31 PM by vrusu
Analysis Method  : C:\CHEM32\1\METHODS\VR040522_115PM.M
Last changed    : 4/5/2022 7:49:10 AM by vrusu
  
```



=====  
 Area Percent Report  
 =====

```

Sorted By       : Signal
Calib. Data Modified : 4/5/2022 7:47:34 AM
Multiplier:     : 1.0000
Dilution:       : 1.0000
Use Multiplier & Dilution Factor with ISTDs
  
```

Signal 1: DAD1 A, Sig=245,4 Ref=360,5

Peak #	RetTime [min]	Type	Width [min]	Area [mAU*s]	Area %	Name
1	2.363	VV	0.0749	1.56269	0.0351	?
2	2.572	VB	0.0723	2.28241	0.0513	?
3	3.056	VB	0.0710	3.35092	0.0754	?
4	3.268	BV	0.0954	11.80164	0.2654	?
5	3.475	VB	0.0809	10.29505	0.2315	?
6	3.687	BB	0.0865	1.30971	0.0295	?
7	4.136	BV	0.0824	2.26930	0.0510	?
8	4.344	VB	0.0894	4320.71045	97.1709	9a-Bromo-Desonide

Sample Name: GR-17-115 spl-1

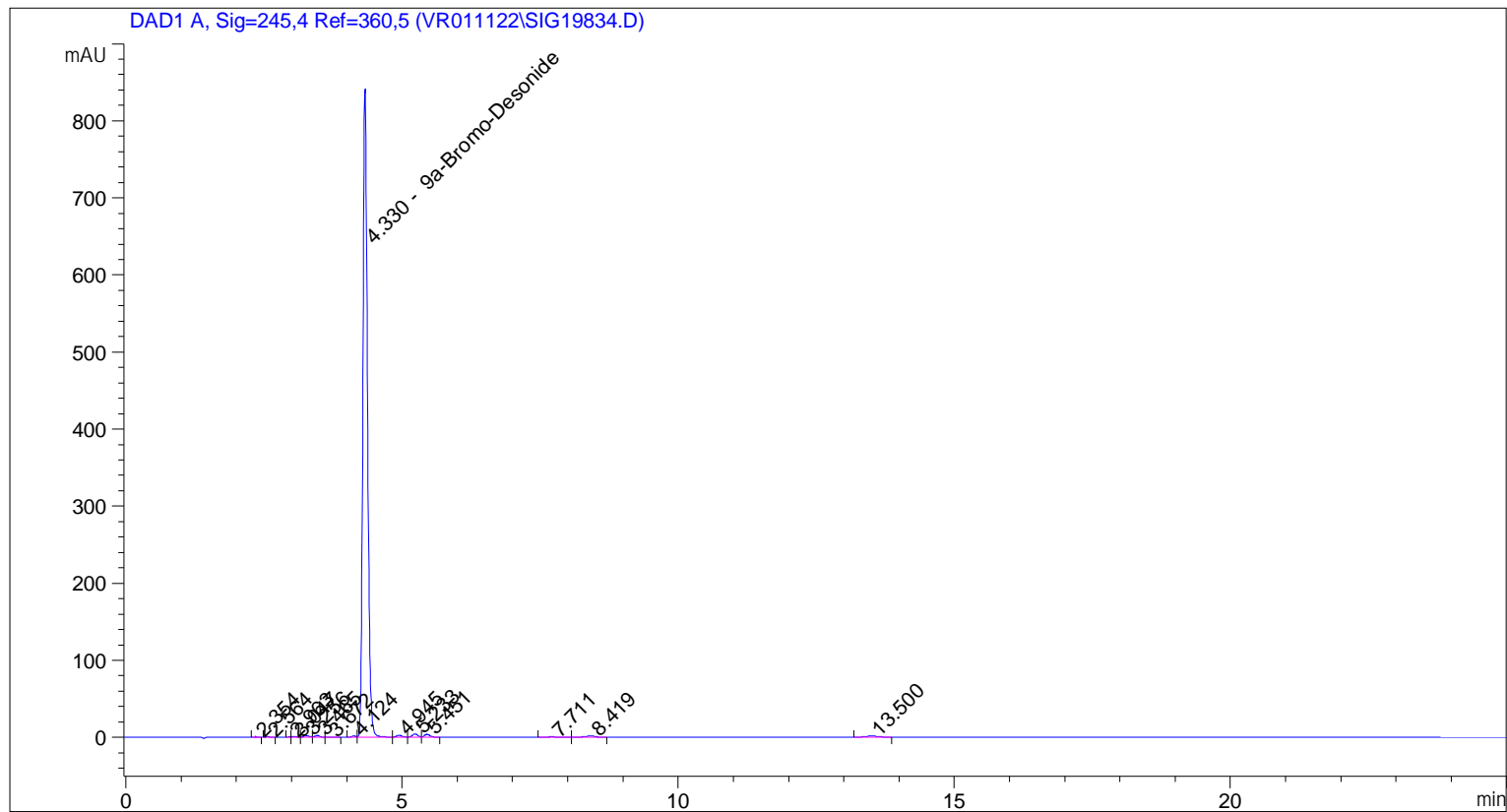
Peak #	RetTime [min]	Type	Width [min]	Area [mAU*s]	Area %	Name
9	4.959	BB	0.0929	9.47512	0.2131	?
10	5.248	BV	0.0969	23.19124	0.5216	?
11	5.466	VB	0.1018	21.11503	0.4749	?
12	7.722	BB	0.1319	2.76143	0.0621	?
13	8.434	BB	0.1589	17.85831	0.4016	?
14	13.518	BB	0.2265	18.52398	0.4166	?

Totals : 4446.50729

=====  
\*\*\* End of Report \*\*\*

```

=====
Acq. Operator   : vrusu
Acq. Instrument : Instrument 1                Location : Vial 76
Injection Date  : 4/4/2022 2:04:54 PM
                                           Inj Volume : 5.0 µl
Acq. Method    : C:\CHEM32\1\METHODS\VR040422_115.M
Last changed   : 4/4/2022 2:03:44 PM by vrusu
Analysis Method: C:\CHEM32\1\METHODS\VR040522_115PM.M
Last changed   : 4/5/2022 7:49:10 AM by vrusu
  
```



=====  
 Area Percent Report  
 =====

```

Sorted By           :      Signal
Calib. Data Modified :      4/5/2022 7:47:34 AM
Multiplier:         :      1.0000
Dilution:           :      1.0000
Use Multiplier & Dilution Factor with ISTDs
  
```

Signal 1: DAD1 A, Sig=245,4 Ref=360,5

Peak #	RetTime [min]	Type	Width [min]	Area [mAU*s]	Area %	Name
1	2.354	VB	0.0678	1.27642	0.0255	?
2	2.564	BB	0.0670	1.83792	0.0367	?
3	2.963	BV	0.0510	1.08215	0.0216	?
4	3.047	VB	0.0706	3.98663	0.0795	?
5	3.256	BV	0.0963	13.49142	0.2691	?
6	3.465	VV	0.0819	11.69234	0.2332	?
7	3.672	VB	0.0928	1.52897	0.0305	?
8	4.124	BV	0.0808	7.44713	0.1485	?

Sample Name: GR-17-115 spl-2

Peak #	RetTime [min]	Type	Width [min]	Area [mAU*s]	Area %	Name
9	4.330	VB	0.0874	4864.59961	97.0243	9a-Bromo-Desonide
10	4.945	BB	0.0935	13.33628	0.2660	?
11	5.233	BV	0.0967	26.06411	0.5198	?
12	5.451	VB	0.1040	23.60354	0.4708	?
13	7.711	BB	0.1484	4.36296	0.0870	?
14	8.419	BB	0.1684	17.49249	0.3489	?
15	13.500	BB	0.2144	21.99402	0.4387	?

Totals : 5013.79599

=====  
\*\*\* End of Report \*\*\*