

Name:	9α-Bromo Flunisolide-21-Acetate
Lot#:	GR-17-167
Test Date:	06/22/2022 (re-test date: 06/22/2027)
CAS No.:	NA
MF:	C ₂₆ H ₃₂ BrFO ₇
MW:	555.43
Appearance:	White Solid
Purity:	96.4% by HPLC (average of two sample preparations)
¹H-NMR:	Conforms
MS-ESI (+)	Conforms (shows peaks at m/z = 537.1&539.1 [M-H ₂ O+H] ⁺ , 555.1&557.1 [M+H] ⁺ , 577.1&579.1 [M+Na] ⁺ , exhibits the expected isotope pattern for mono-bromo compounds)
Storage	Store at -18°C in a dry place away from direct sunlight

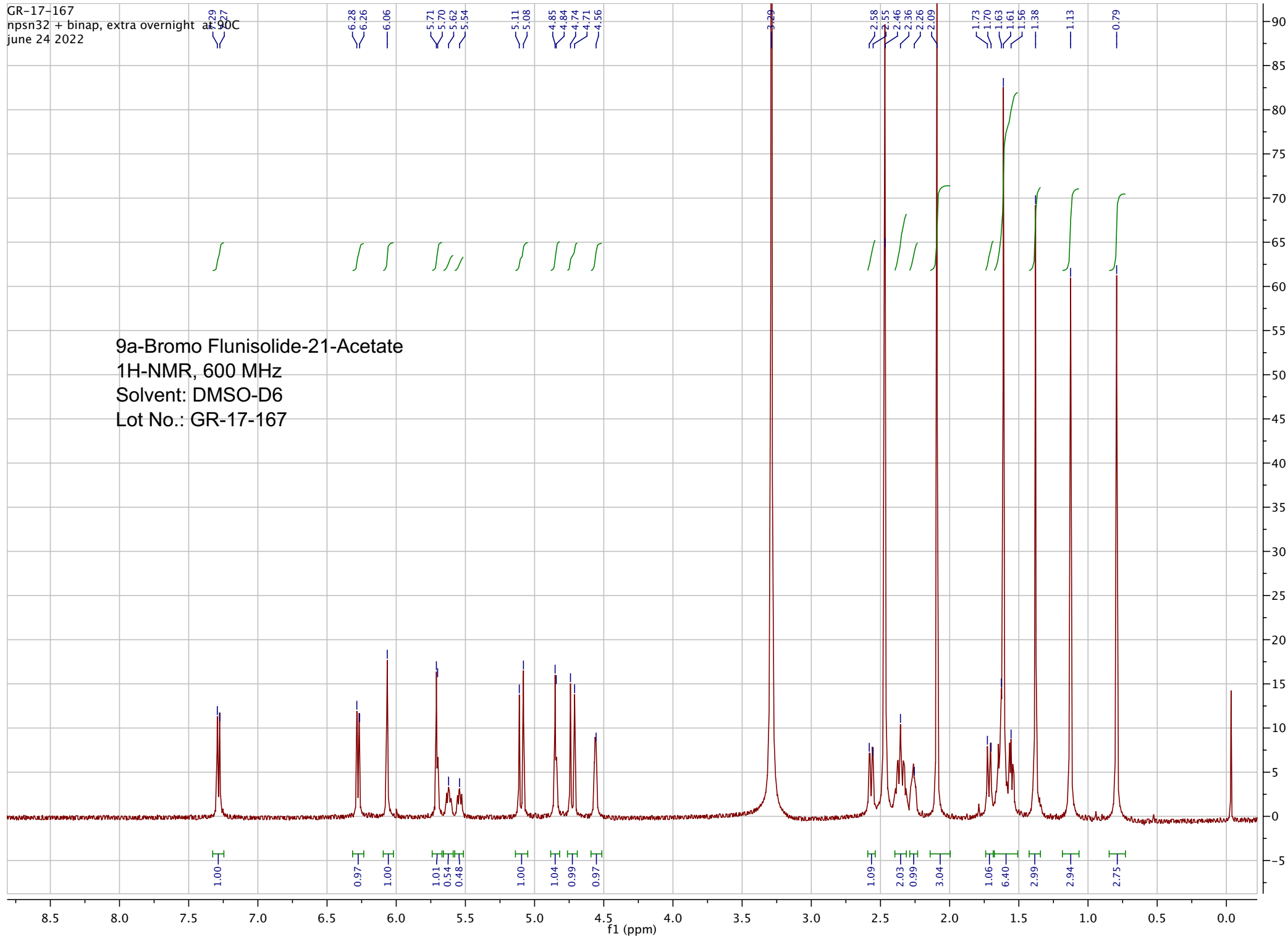
Approved by:

Date: 06/24/2022

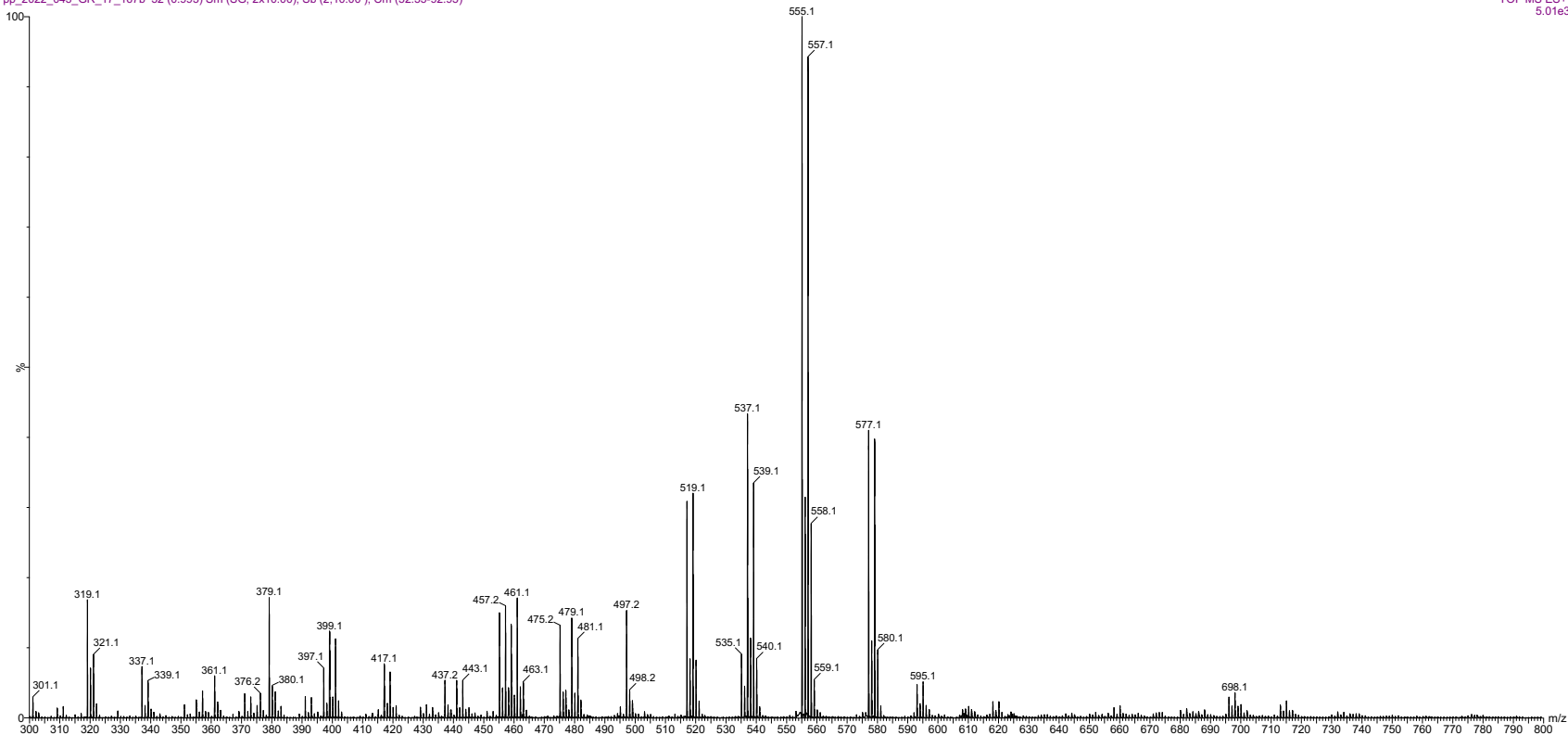


Viorica Rusu, QC/QA Manager

GR-17-167
npsn32 + binap, extra overnight at 90C
june 24 2022



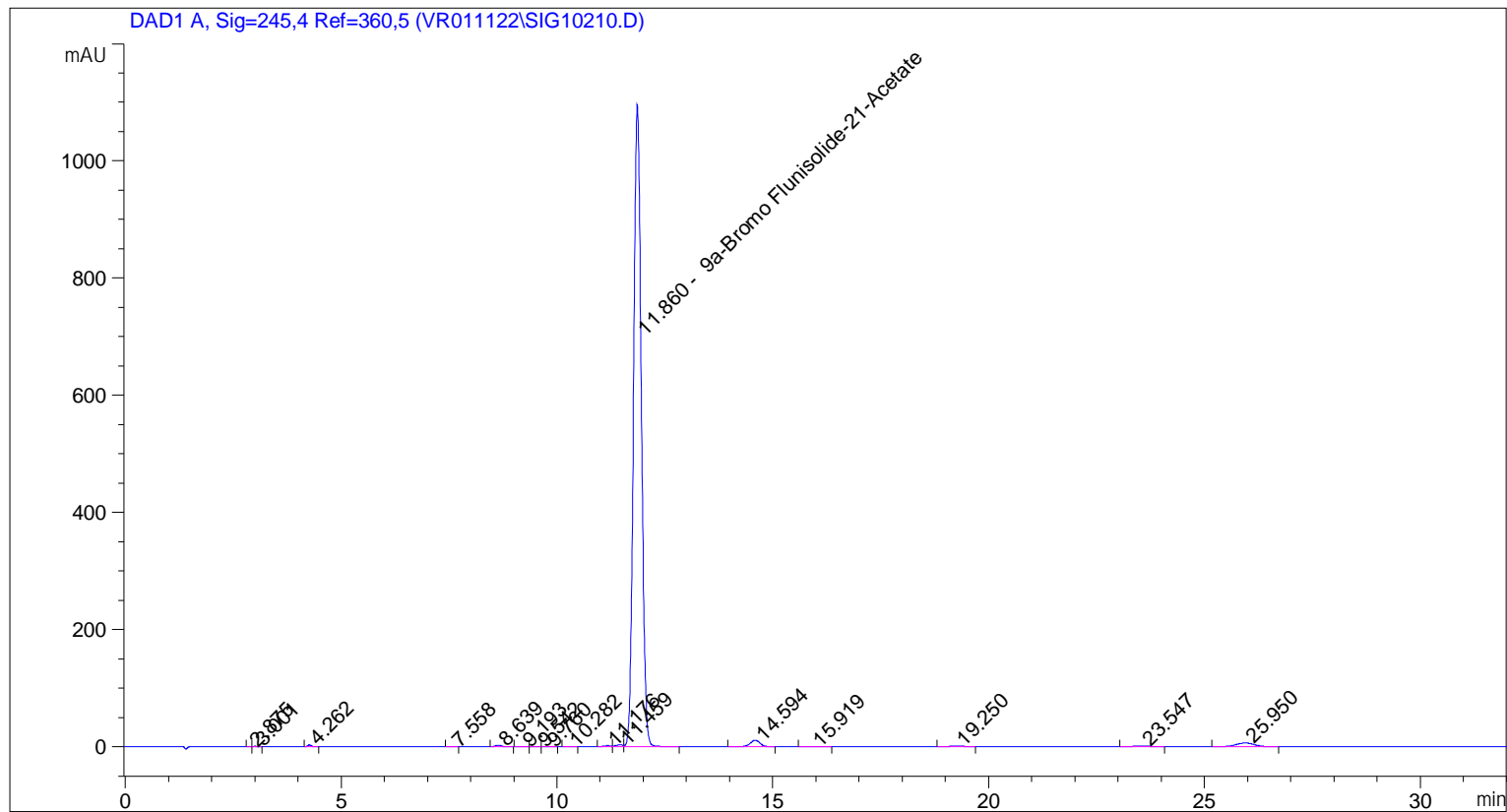
pp_2022_045_GR_17_167b 52 (0.993) Sm (SG, 2x10.00); Sb (2,10.00); Cm (52:55-92:95)



ESI-MS spectrum for sample GR-17-167. Shows monoisotopic $[M+H]^+$ mass.

```

=====
Acq. Operator   : vrusu
Acq. Instrument : Instrument 1                Location : Vial 78
Injection Date  : 6/22/2022 8:20:31 AM
                                           Inj Volume : 15.0 µl
Acq. Method     : C:\CHEM32\1\METHODS\VR062222_167.M
Last changed    : 6/22/2022 8:19:13 AM by vrusu
Analysis Method : C:\CHEM32\1\METHODS\VR062222_167PM.M
Last changed    : 6/22/2022 9:18:42 AM by vrusu
  
```



Area Percent Report

```

Sorted By           : Signal
Calib. Data Modified : 6/22/2022 9:16:43 AM
Multiplier:         : 1.0000
Dilution:           : 1.0000
Use Multiplier & Dilution Factor with ISTDs
  
```

Signal 1: DAD1 A, Sig=245,4 Ref=360,5

Peak #	RetTime [min]	Type	Width [min]	Area [mAU*s]	Area %	Name
1	2.875	BV	0.0766	1.44712	0.0102	?
2	3.001	VB	0.0793	3.30450	0.0232	?
3	4.262	BB	0.0855	16.98218	0.1195	?
4	7.558	BB	0.1090	2.01494	0.0142	?
5	8.639	BB	0.1455	22.35701	0.1573	?
6	9.193	BB	0.1410	3.56284	0.0251	?
7	9.542	BB	0.1093	8.09069e-1	5.692e-3	?
8	9.760	BB	0.1243	1.95971	0.0138	?

Sample Name: GR-17-167

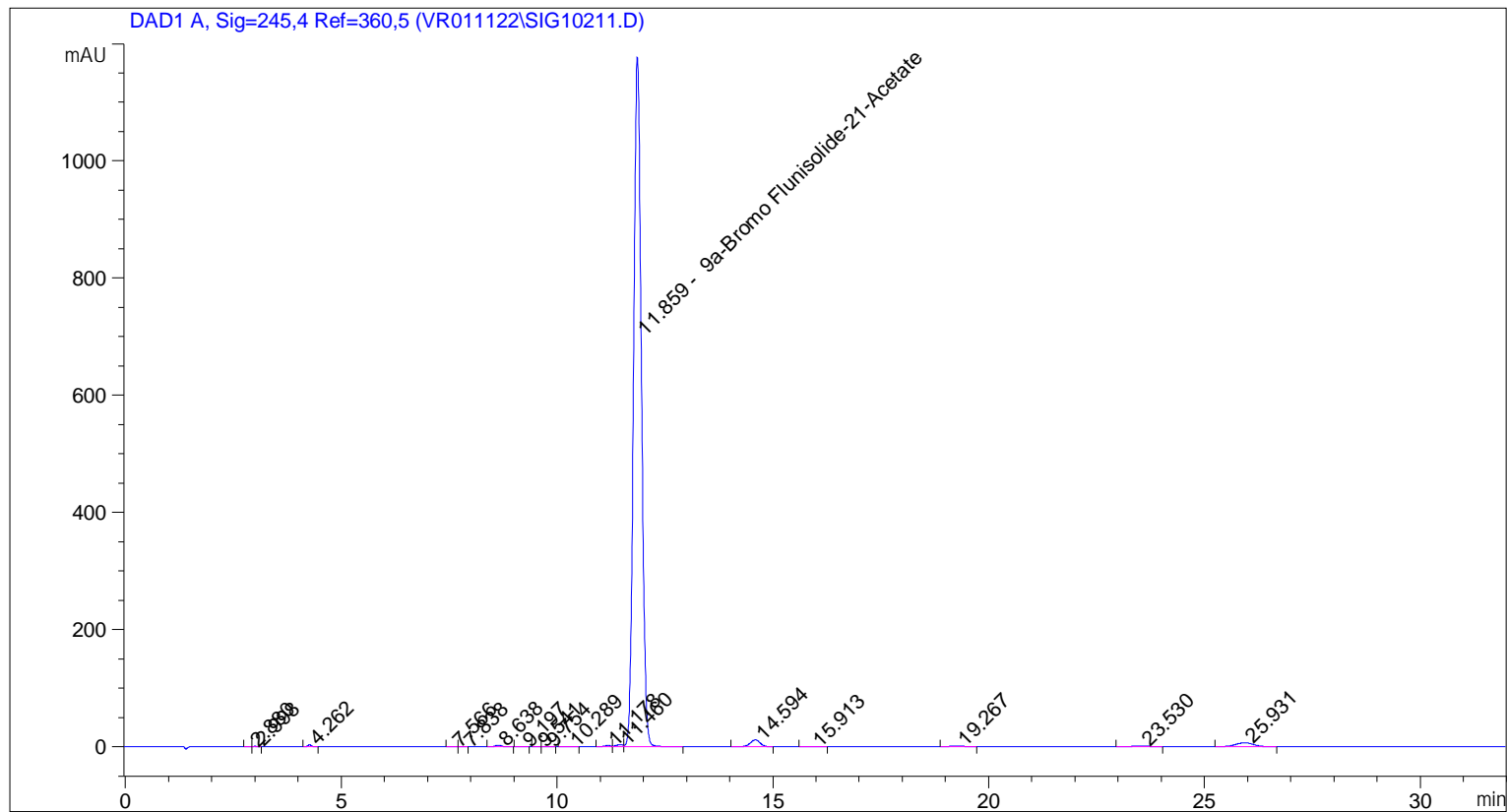
Peak #	RetTime [min]	Type	Width [min]	Area [mAU*s]	Area %	Name
9	10.282	BB	0.1303	2.31934	0.0163	?
10	11.176	BV	0.1823	19.38029	0.1363	?
11	11.459	VV	0.1706	35.73037	0.2514	?
12	11.860	VB	0.1937	1.36911e4	96.3161	9a-Bromo Flunisolide-21-Acetate
13	14.594	BB	0.2491	171.74113	1.2082	?
14	15.919	BB	0.2885	5.24244	0.0369	?
15	19.250	BB	0.2633	23.01035	0.1619	?
16	23.547	BB	0.3207	26.88522	0.1891	?
17	25.950	VB	0.4264	186.91121	1.3149	?

Totals : 1.42147e4

=====
*** End of Report ***

```

=====
Acq. Operator   : vrusu
Acq. Instrument : Instrument 1                Location : Vial 79
Injection Date  : 6/22/2022 8:56:20 AM
                                           Inj Volume : 15.0 µl
Acq. Method     : C:\CHEM32\1\METHODS\VR062222_167.M
Last changed    : 6/22/2022 8:55:04 AM by vrusu
Analysis Method  : C:\CHEM32\1\METHODS\VR062222_167PM.M
Last changed    : 6/22/2022 9:18:42 AM by vrusu
  
```



=====
 Area Percent Report
 =====

```

Sorted By           :      Signal
Calib. Data Modified :      6/22/2022 9:16:43 AM
Multiplier:         :      1.0000
Dilution:           :      1.0000
Use Multiplier & Dilution Factor with ISTDs
  
```

Signal 1: DAD1 A, Sig=245,4 Ref=360,5

Peak #	RetTime [min]	Type	Width [min]	Area [mAU*s]	Area %	Name
1	2.880	BV	0.0767	1.89911	0.0124	?
2	2.998	VB	0.0807	3.68084	0.0241	?
3	4.262	BB	0.0877	18.29046	0.1197	?
4	7.566	BB	0.1057	2.04008	0.0133	?
5	7.838	BB	0.0840	7.49302e-1	4.902e-3	?
6	8.638	BB	0.1446	23.86713	0.1562	?
7	9.197	BB	0.1373	3.76747	0.0246	?
8	9.541	BB	0.0879	6.14567e-1	4.021e-3	?

Sample Name: GR-17-167 spl-2

Peak #	RetTime [min]	Type	Width [min]	Area [mAU*s]	Area %	Name
9	9.754	BB	0.1317	1.96381	0.0128	?
10	10.289	BB	0.1406	2.62412	0.0172	?
11	11.178	BV	0.1723	21.20473	0.1387	?
12	11.460	VV	0.1681	38.18268	0.2498	?
13	11.859	VB	0.1940	1.47355e4	96.4074	9a-Bromo Flunisolide-21-Acetate
14	14.594	BB	0.2480	181.32568	1.1863	?
15	15.913	BB	0.2453	4.40102	0.0288	?
16	19.267	BB	0.2573	23.13747	0.1514	?
17	23.530	BB	0.3288	28.92420	0.1892	?
18	25.931	BB	0.4323	192.44147	1.2591	?

Totals : 1.52846e4

=====
*** End of Report ***