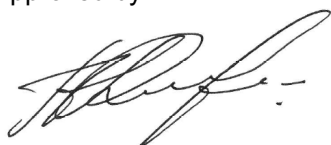


<b>Name:</b>	Flunisolide-9β,11β-epoxide
<b>Lot#:</b>	GR-17-173
<b>Test Date:</b>	06/22/2022 (re-test date: 06/22/2027)
<b>CAS No.:</b>	NA
<b>MF:</b>	C <sub>24</sub> H <sub>29</sub> FO <sub>6</sub>
<b>MW:</b>	432.48
<b>Appearance:</b>	Off-White Solid
<b>Purity:</b>	97.7% by HPLC (average of two sample preparations)
<b><sup>1</sup>H-NMR:</b>	Conforms (shows a trace of EtOAc)
<b>MS-ESI (+)</b>	Conforms (shows peaks at m/z = 413.1 [M-HF+H] <sup>+</sup> , 433.2 [M+H] <sup>+</sup> )
<b>Storage</b>	Store at -18°C in a dry place away from direct sunlight

Approved by:

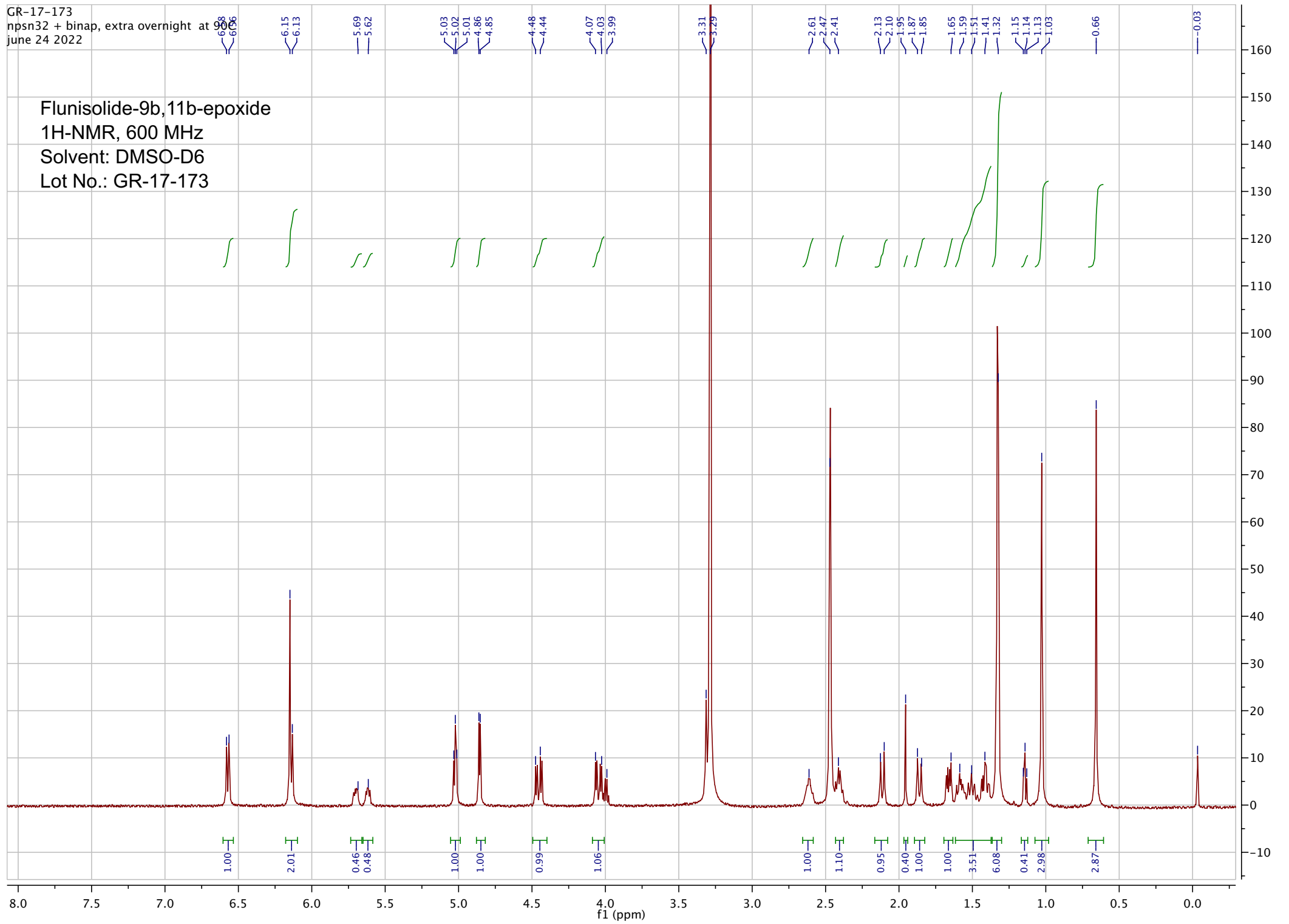
Date: 06/24/2022



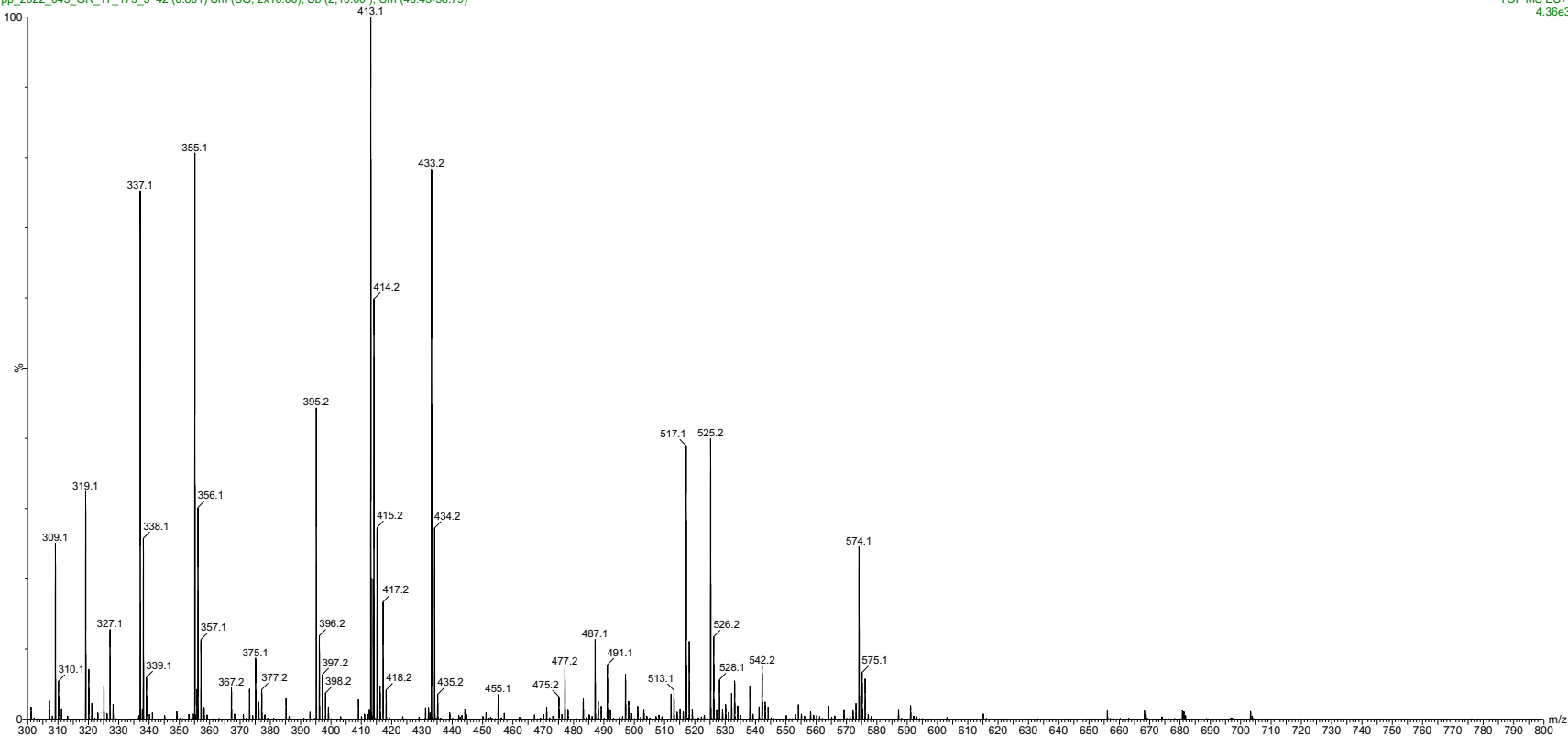
Viorica Rusu, QC/QA Manager

GR-17-173  
npsn32 + binap, extra overnight at 900  
june 24 2022

Flunisolid-9b,11b-epoxide  
1H-NMR, 600 MHz  
Solvent: DMSO-D6  
Lot No.: GR-17-173



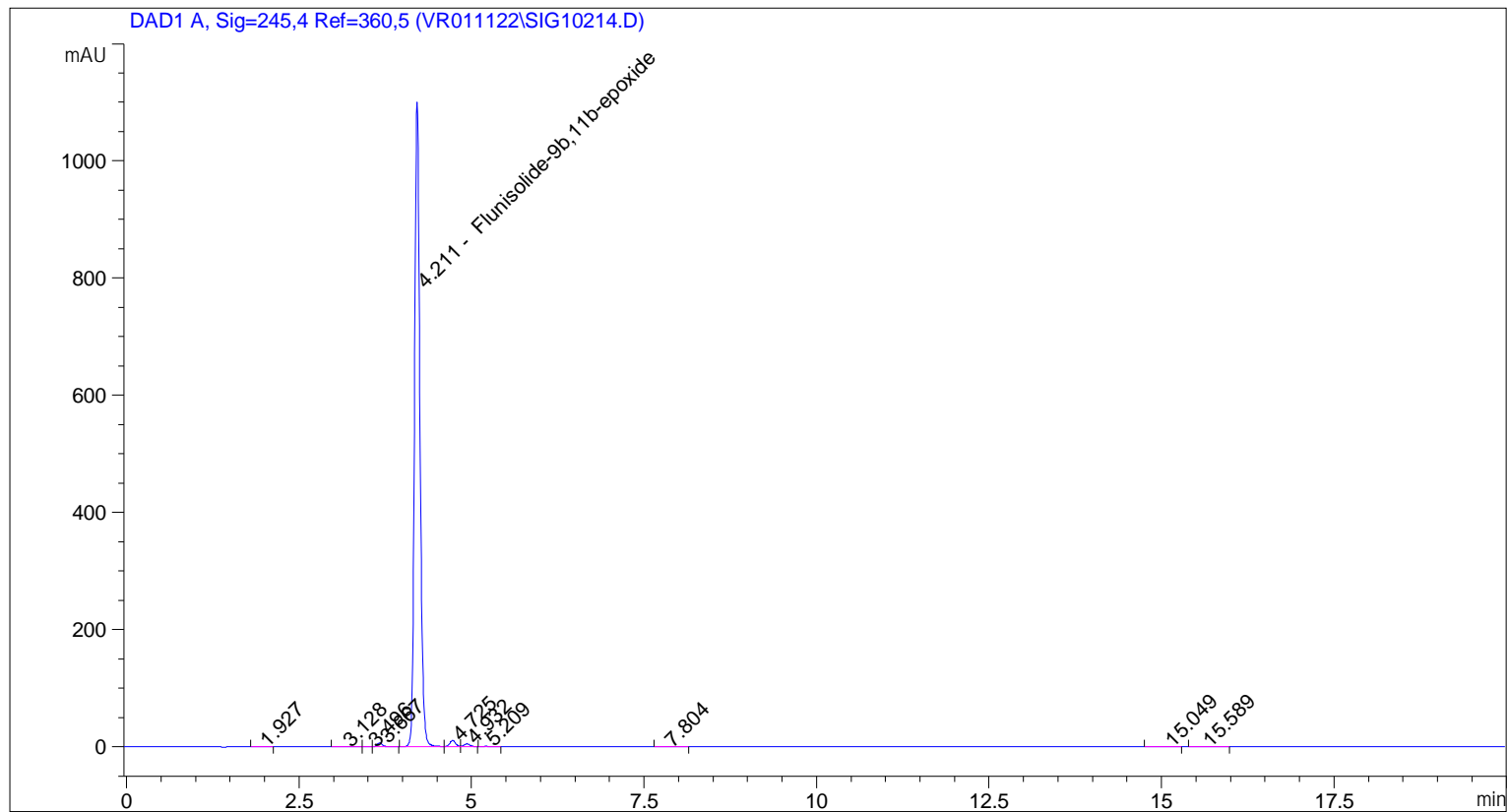
pp\_2022\_045\_GR\_17\_173\_3 42 (0.801) Sm (SG, 2x10.00); Sb (2,10.00); Cm (40:43-58:79)



ESI-MS spectrum for sample GR-17-173. Shows monoisotopic  $[M+H]^+$  mass.

```

=====
Acq. Operator   : vrusu
Acq. Instrument : Instrument 1                Location : Vial 81
Injection Date  : 6/22/2022 1:01:46 PM
                                           Inj Volume : 5.0 µl
Acq. Method    : C:\CHEM32\1\METHODS\VR062222_173.M
Last changed   : 6/22/2022 1:00:41 PM by vrusu
Analysis Method: C:\CHEM32\1\METHODS\VR062222_173PM.M
Last changed   : 6/22/2022 2:09:42 PM by vrusu
  
```



Area Percent Report

```

Sorted By      : Signal
Calib. Data Modified : 6/22/2022 2:07:51 PM
Multiplier:    : 1.0000
Dilution:      : 1.0000
Use Multiplier & Dilution Factor with ISTDs
  
```

Signal 1: DAD1 A, Sig=245,4 Ref=360,5

Peak #	RetTime [min]	Type	Width [min]	Area [mAU*s]	Area %	Name
1	1.927	BB	0.0731	1.00327	0.0163	?
2	3.128	BB	0.1225	3.66248	0.0596	?
3	3.496	BV	0.0713	1.20684	0.0197	?
4	3.667	VB	0.0775	33.37150	0.5434	?
5	4.211	BB	0.0857	6001.83838	97.7324	Flunisolide-9b,11b-epoxide
6	4.725	BV	0.0879	57.42907	0.9352	?
7	4.932	VB	0.0911	27.50718	0.4479	?
8	5.209	BB	0.1340	4.27794	0.0697	?

Sample Name: GR-17-173

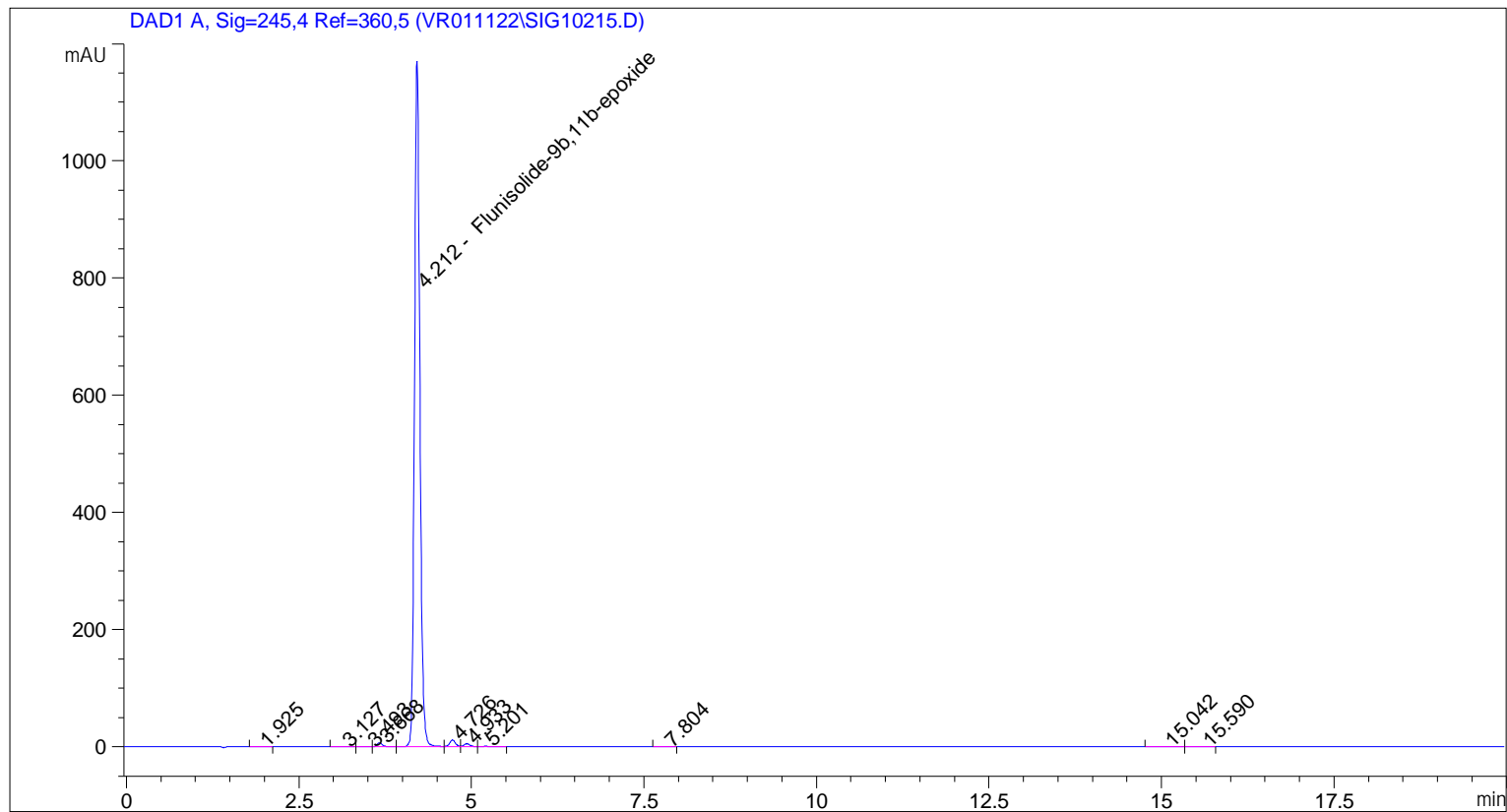
Peak #	RetTime [min]	Type	Width [min]	Area [mAU*s]	Area %	Name
9	7.804	BB	0.1543	2.57412	0.0419	?
10	15.049	BB	0.1945	6.11782	0.0996	?
11	15.589	BB	0.1546	2.10342	0.0343	?

Totals : 6141.09202

=====  
\*\*\* End of Report \*\*\*

```

=====
Acq. Operator   : vrusu
Acq. Instrument : Instrument 1                Location : Vial 82
Injection Date  : 6/22/2022 1:26:07 PM
                                           Inj Volume : 5.0 µl
Acq. Method    : C:\CHEM32\1\METHODS\VR062222_173.M
Last changed   : 6/22/2022 1:25:06 PM by vrusu
Analysis Method: C:\CHEM32\1\METHODS\VR062222_173PM.M
Last changed   : 6/22/2022 2:09:42 PM by vrusu
  
```



Area Percent Report

```

Sorted By      : Signal
Calib. Data Modified : 6/22/2022 2:07:51 PM
Multiplier:    : 1.0000
Dilution:     : 1.0000
Use Multiplier & Dilution Factor with ISTDs
  
```

Signal 1: DAD1 A, Sig=245,4 Ref=360,5

Peak #	RetTime [min]	Type	Width [min]	Area [mAU*s]	Area %	Name
1	1.925	BB	0.0865	1.21260	0.0185	?
2	3.127	BV	0.1031	3.01792	0.0461	?
3	3.493	VV	0.0860	1.37988	0.0211	?
4	3.668	VB	0.0778	35.56687	0.5435	?
5	4.212	BB	0.0836	6393.59668	97.7048	Flunisolide-9b,11b-epoxide
6	4.726	BV	0.0881	63.28044	0.9670	?
7	4.933	VB	0.0904	27.73190	0.4238	?
8	5.201	BB	0.1330	4.27907	0.0654	?

Sample Name: GR-17-173 spl-2

Peak #	RetTime [min]	Type	Width [min]	Area [mAU*s]	Area %	Name
9	7.804	BB	0.1329	2.63722	0.0403	?
10	15.042	BV	0.2162	7.54413	0.1153	?
11	15.590	VB	0.1914	3.54348	0.0542	?

Totals : 6543.79019

=====  
\*\*\* End of Report \*\*\*