

Name: 7α-Methylthio Spironolactone
Lot#: VR-2-143
Test Date: 02/16/2022 (re-test date: 02/16/2027)
CAS No.: 38753-77-4
MF: C₂₃H₃₂O₃S
MW: 388.56
Appearance: White solid
Purity: 98.8% by HPLC (average of two sample preparations)
¹H-NMR: Conforms
MS-ESI (+) Conforms (shows peak at m/z=389.17 [M+H]⁺)
Storage Store at 0-5°C in a dry place away from direct sunlight

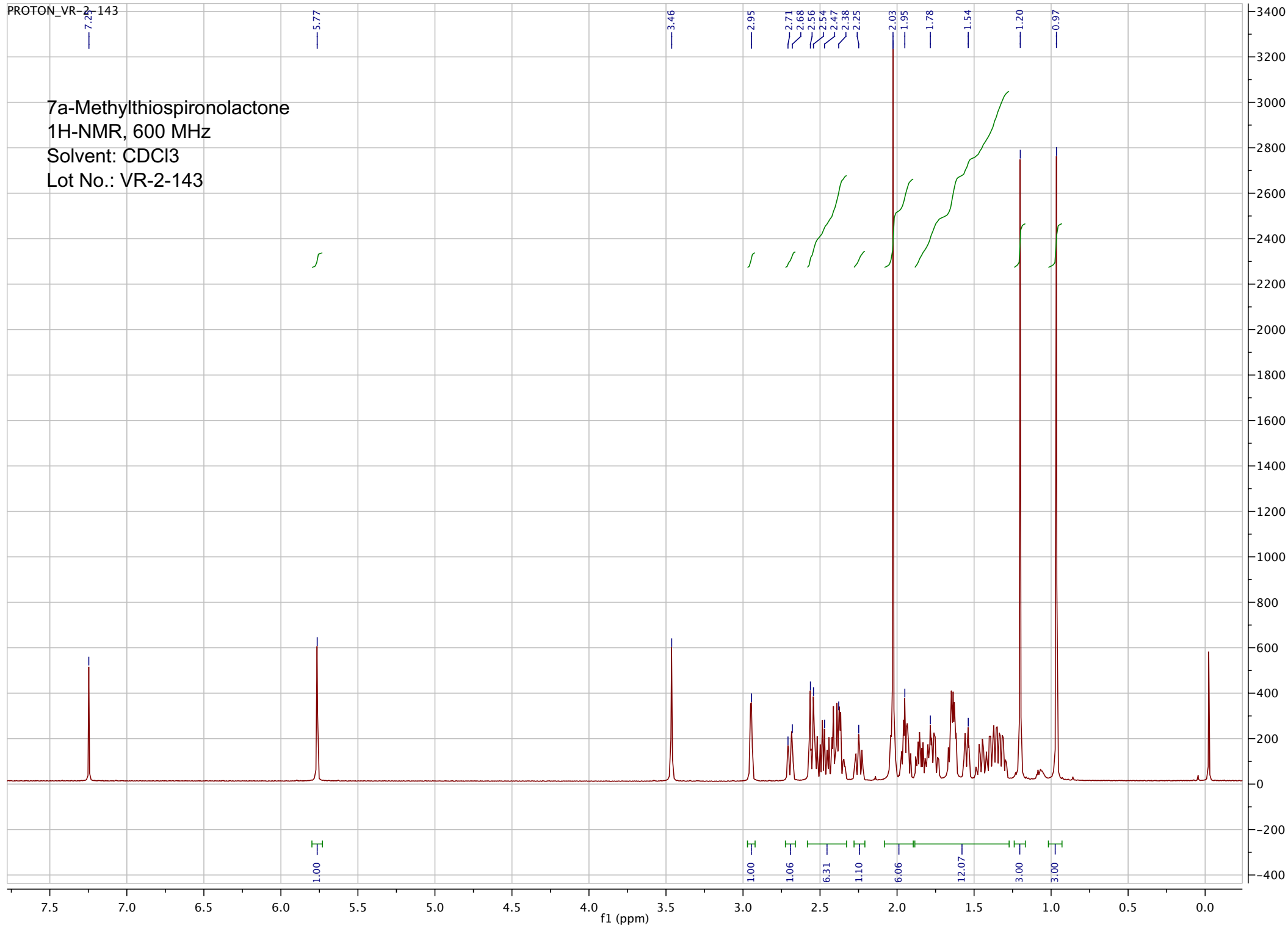
Approved by:

Date: 02/18/2022



Viorica Rusu, QC/QA Manager

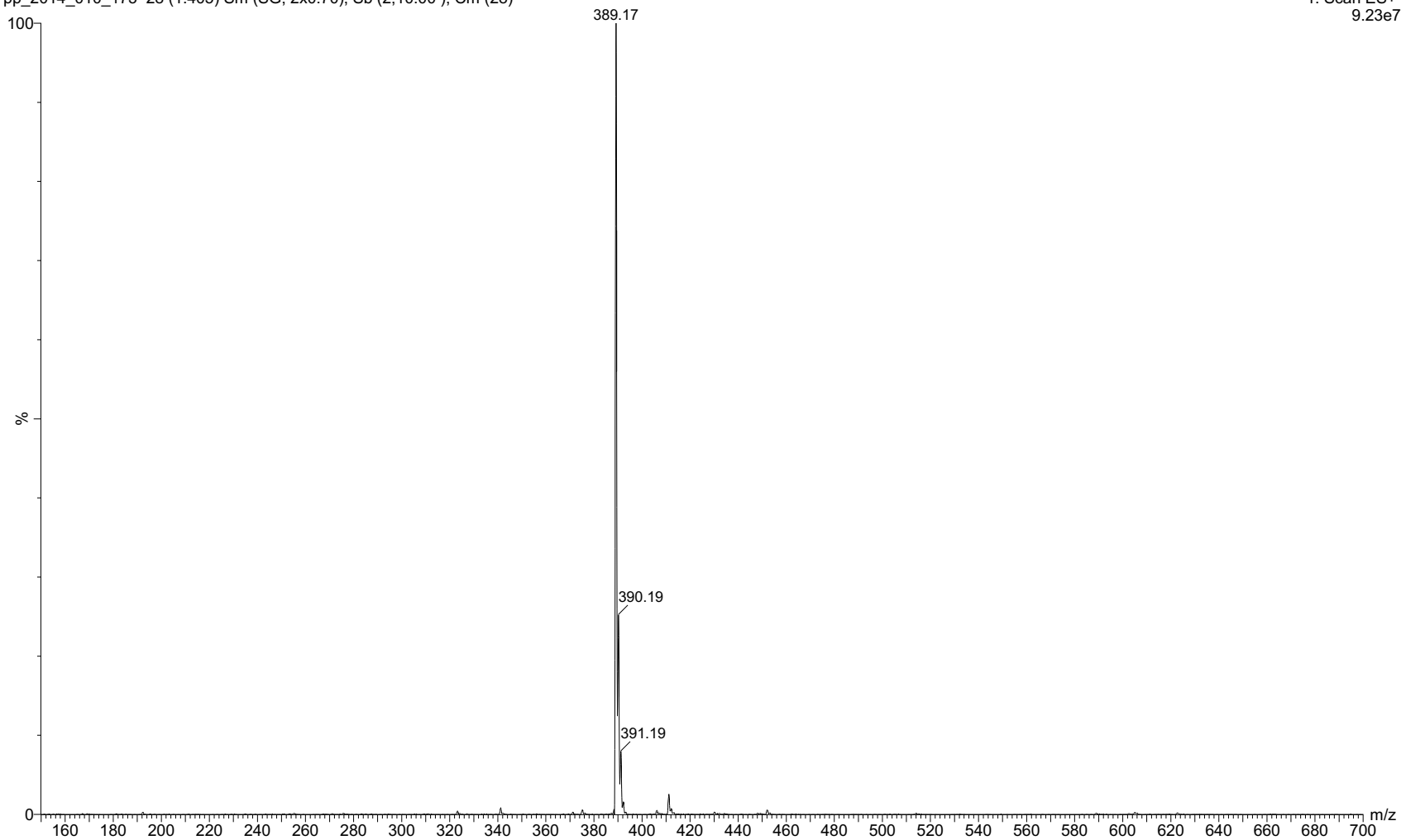
7a-Methylthiospironolactone
1H-NMR, 600 MHz
Solvent: CDCl3
Lot No.: VR-2-143



12-Feb-2014, 15:03:15

1: Scan ES+
9.23e7

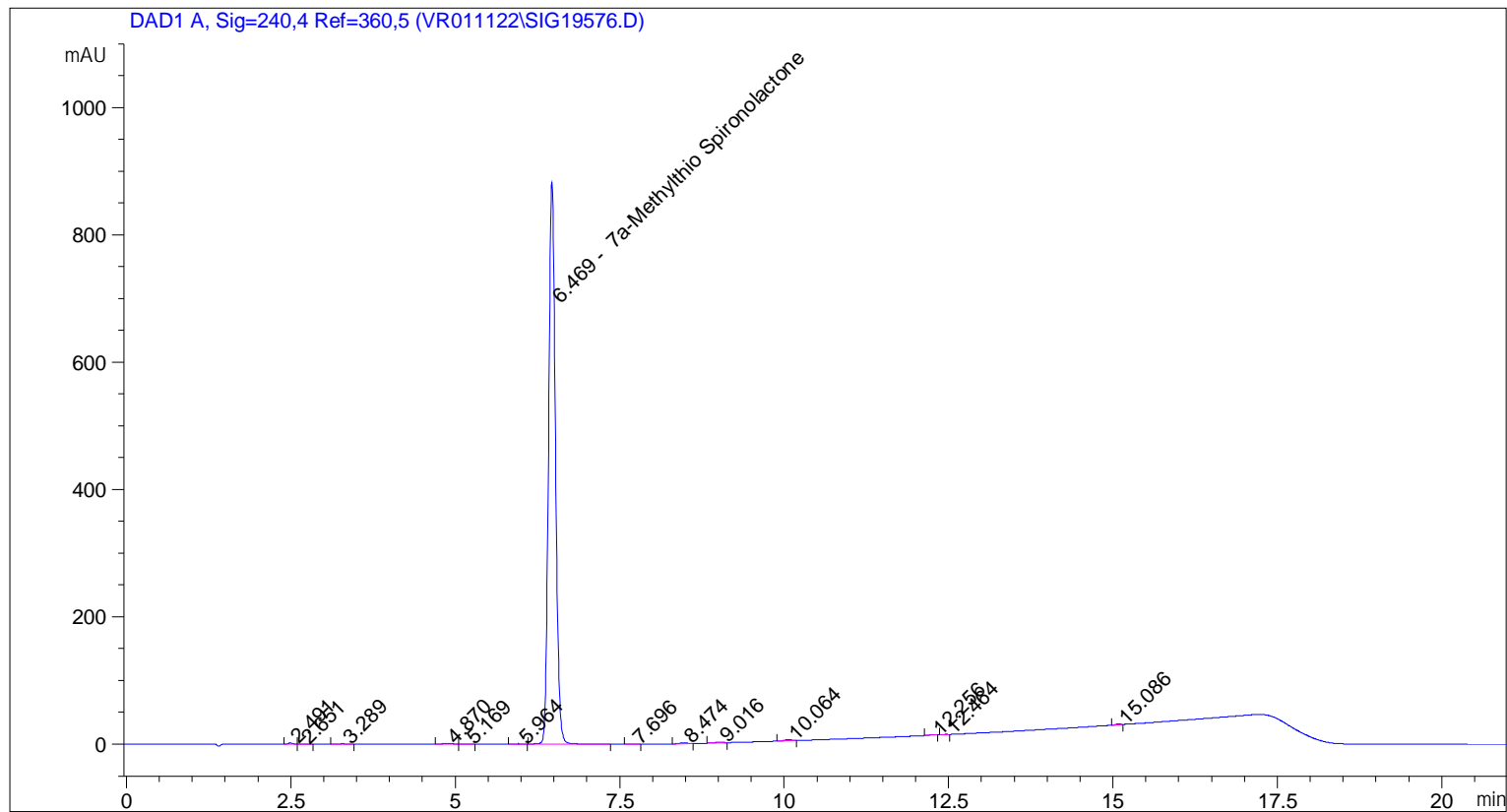
pp_2014_010_173 28 (1.405) Sm (SG, 2x0.70); Sb (2,10.00); Cm (28)



ESI-MS data for VR-2-143. Shows monoisotopic [M+H]⁺ mass.

```

=====
Acq. Operator   : vrusu
Acq. Instrument : Instrument 1                Location : Vial 40
Injection Date  : 2/16/2022 1:57:34 PM
                                           Inj Volume : 5.0 µl
Acq. Method    : C:\CHEM32\1\METHODS\VR021622_143.M
Last changed   : 2/16/2022 1:56:43 PM by vrusu
Analysis Method: C:\CHEM32\1\METHODS\VR021622_143PM.M
Last changed   : 2/16/2022 2:41:36 PM by vrusu
  
```



=====
 Area Percent Report
 =====

```

Sorted By           : Signal
Calib. Data Modified : 2/16/2022 2:41:30 PM
Multiplier          : 1.0000
Dilution            : 1.0000
Use Multiplier & Dilution Factor with ISTDs
  
```

Signal 1: DAD1 A, Sig=240,4 Ref=360,5

Peak #	RetTime [min]	Type	Width [min]	Area [mAU*s]	Area %	Name
1	2.491	BV	0.0639	7.82059	0.1205	?
2	2.651	VB	0.0810	9.18171e-1	0.0142	?
3	3.289	BB	0.0979	2.95353	0.0455	?
4	4.870	BV	0.1305	9.68801	0.1493	?
5	5.169	VB	0.0911	1.14097	0.0176	?
6	5.964	BB	0.0982	1.00546	0.0155	?
7	6.469	BB	0.1129	6420.19482	98.9486	7a-Methylthio Spironolactone
8	7.696	BB	0.0790	6.22177e-1	9.589e-3	?

Sample Name: VR-2-143

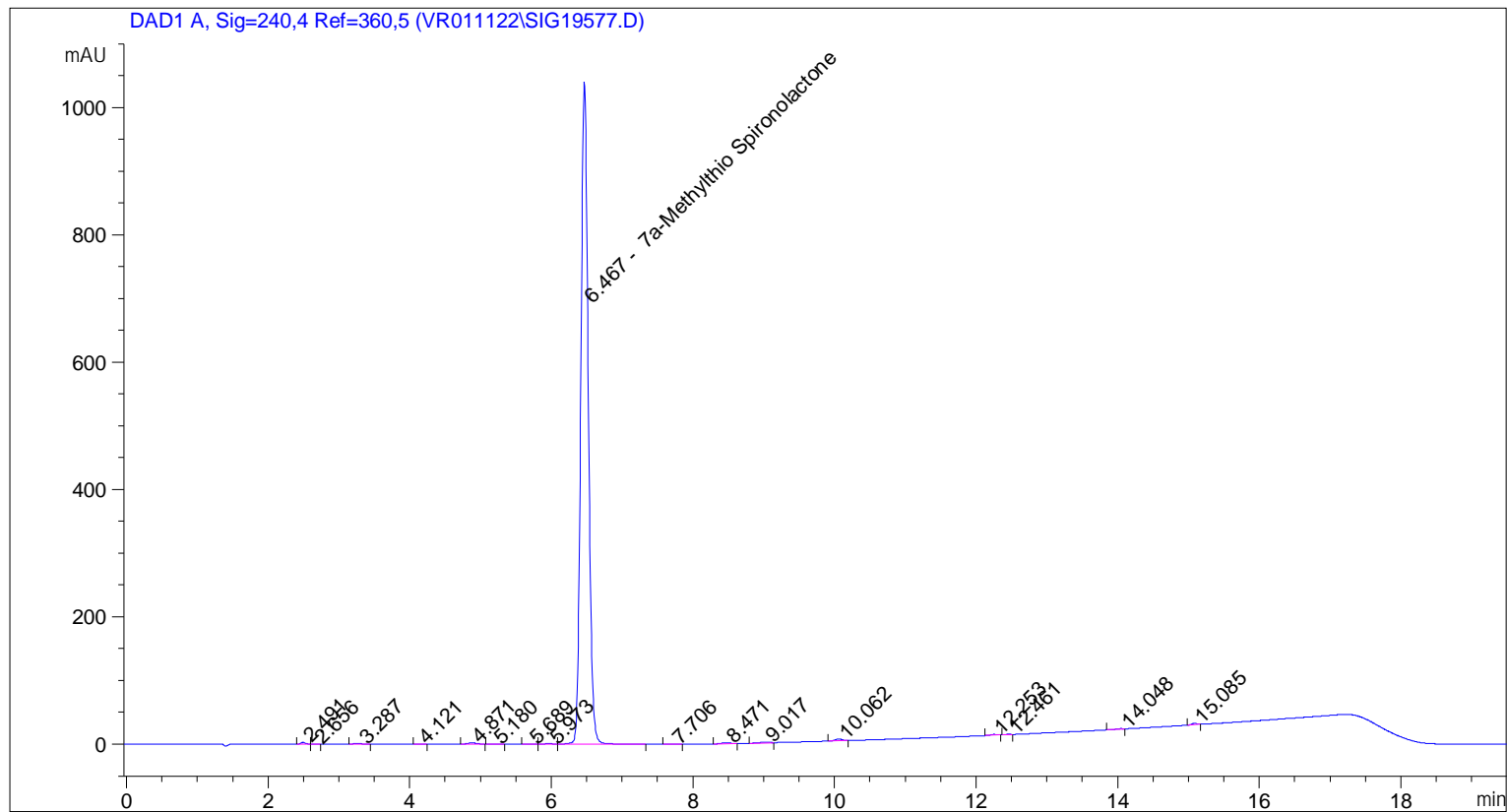
Peak #	RetTime [min]	Type	Width [min]	Area [mAU*s]	Area %	Name
9	8.474	BB	0.1335	11.68816	0.1801	?
10	9.016	BB	0.1174	7.52244	0.1159	?
11	10.064	BB	0.1071	13.32915	0.2054	?
12	12.256	BB	0.0879	4.71482	0.0727	?
13	12.464	BB	0.0775	1.77867	0.0274	?
14	15.086	BB	0.0760	5.03576	0.0776	?

Totals : 6488.41271

=====
*** End of Report ***

```

=====
Acq. Operator   : vrusu
Acq. Instrument : Instrument 1                Location : Vial 41
Injection Date  : 2/16/2022 2:20:21 PM
                                           Inj Volume : 5.0 µl
Acq. Method     : C:\CHEM32\1\METHODS\VR021622_143.M
Last changed    : 2/16/2022 2:19:33 PM by vrusu
Analysis Method : C:\CHEM32\1\METHODS\VR021622_143PM.M
Last changed    : 2/16/2022 2:41:36 PM by vrusu
  
```



=====
 Area Percent Report
 =====

```

Sorted By           :      Signal
Calib. Data Modified :      2/16/2022 2:41:30 PM
Multiplier:         :      1.0000
Dilution:           :      1.0000
Use Multiplier & Dilution Factor with ISTDs
  
```

Signal 1: DAD1 A, Sig=240,4 Ref=360,5

Peak #	RetTime [min]	Type	Width [min]	Area [mAU*s]	Area %	Name
1	2.491	VV	0.0648	11.18104	0.1451	?
2	2.656	VB	0.0688	7.94261e-1	0.0103	?
3	3.287	BB	0.1029	4.58241	0.0595	?
4	4.121	BB	0.0741	8.58688e-1	0.0111	?
5	4.871	BB	0.1329	15.34853	0.1991	?
6	5.180	BV	0.1017	1.29878	0.0169	?
7	5.689	BV	0.1247	1.17906	0.0153	?
8	5.973	VV	0.1449	3.98622	0.0517	?

Sample Name: VR-2-143 spl-2

Peak #	RetTime [min]	Type	Width [min]	Area [mAU*s]	Area %	Name
9	6.467	VB	0.1132	7597.64551	98.5772	7a-Methylthio Spironolactone
10	7.706	BB	0.1149	1.08987	0.0141	?
11	8.471	BB	0.1305	15.04491	0.1952	?
12	9.017	BB	0.1198	10.63042	0.1379	?
13	10.062	BB	0.1093	19.99096	0.2594	?
14	12.253	BB	0.0863	7.85656	0.1019	?
15	12.461	BB	0.0813	2.55696	0.0332	?
16	14.048	BB	0.0897	3.14742	0.0408	?
17	15.085	BB	0.0800	10.11384	0.1312	?

Totals : 7707.30543

=====
*** End of Report ***