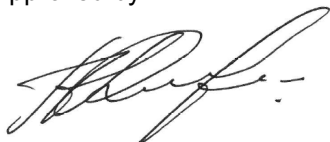


<b>Name:</b>	<b>Sildenafil-D3</b>
<b>Lot#:</b>	GR-10-147
<b>Test Date:</b>	04/07/2022 (re-test date: 04/07/2027)
<b>CAS No.:</b>	1126745-90-1
<b>MF:</b>	C <sub>22</sub> H <sub>27</sub> D <sub>3</sub> N <sub>6</sub> O <sub>4</sub> S
<b>MW:</b>	477.60
<b>Appearance:</b>	Off-white solid
<b>Purity:</b>	97.7% by HPLC (average of two sample preparations); 99% atom D
<b><sup>1</sup>H-NMR:</b>	Conforms
<b>MS-ESI (+)</b>	Conforms (shows peak at m/z = 478.36 [M+H] <sup>+</sup> )
<b>Storage</b>	Store at 0-5°C in a dry place away from direct sunlight

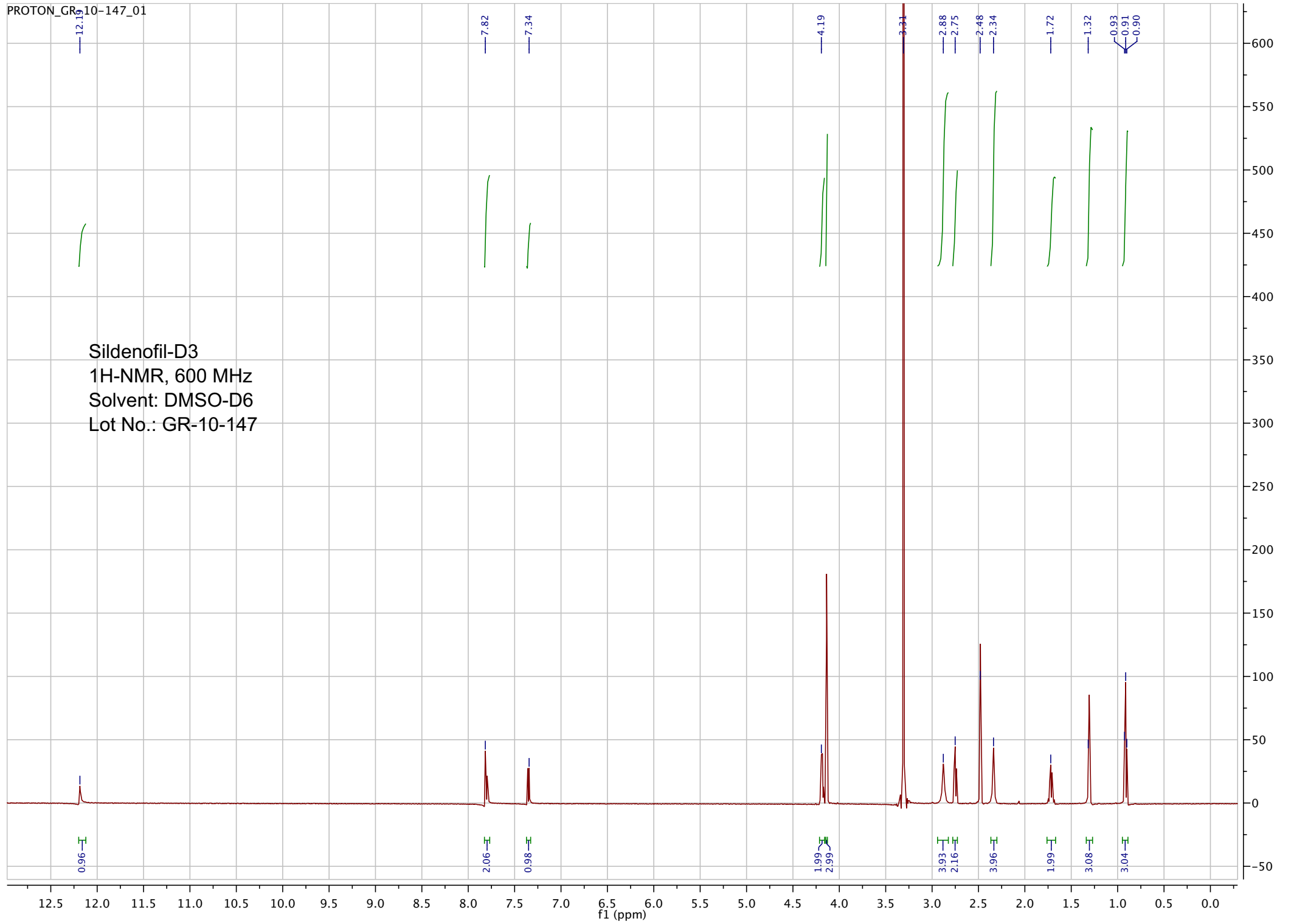
Approved by:

Date: 04/07/2022



Viorica Rusu, QC/QA Manager

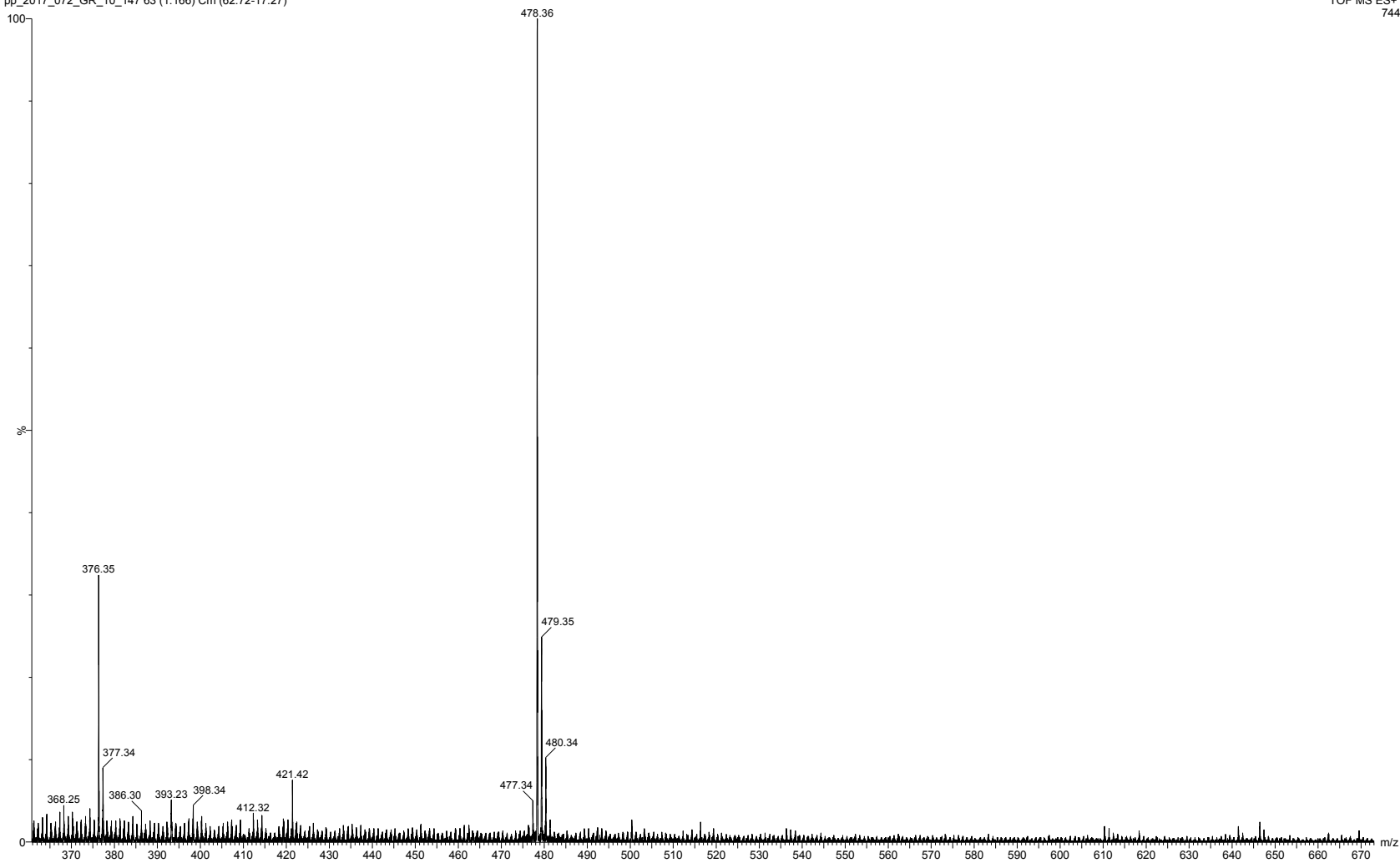
Sildenafil-D3  
1H-NMR, 600 MHz  
Solvent: DMSO-D6  
Lot No.: GR-10-147



pp\_2017\_072\_GR\_10\_147 63 (1.166) Cm (62:72-17:27)

7.0000000

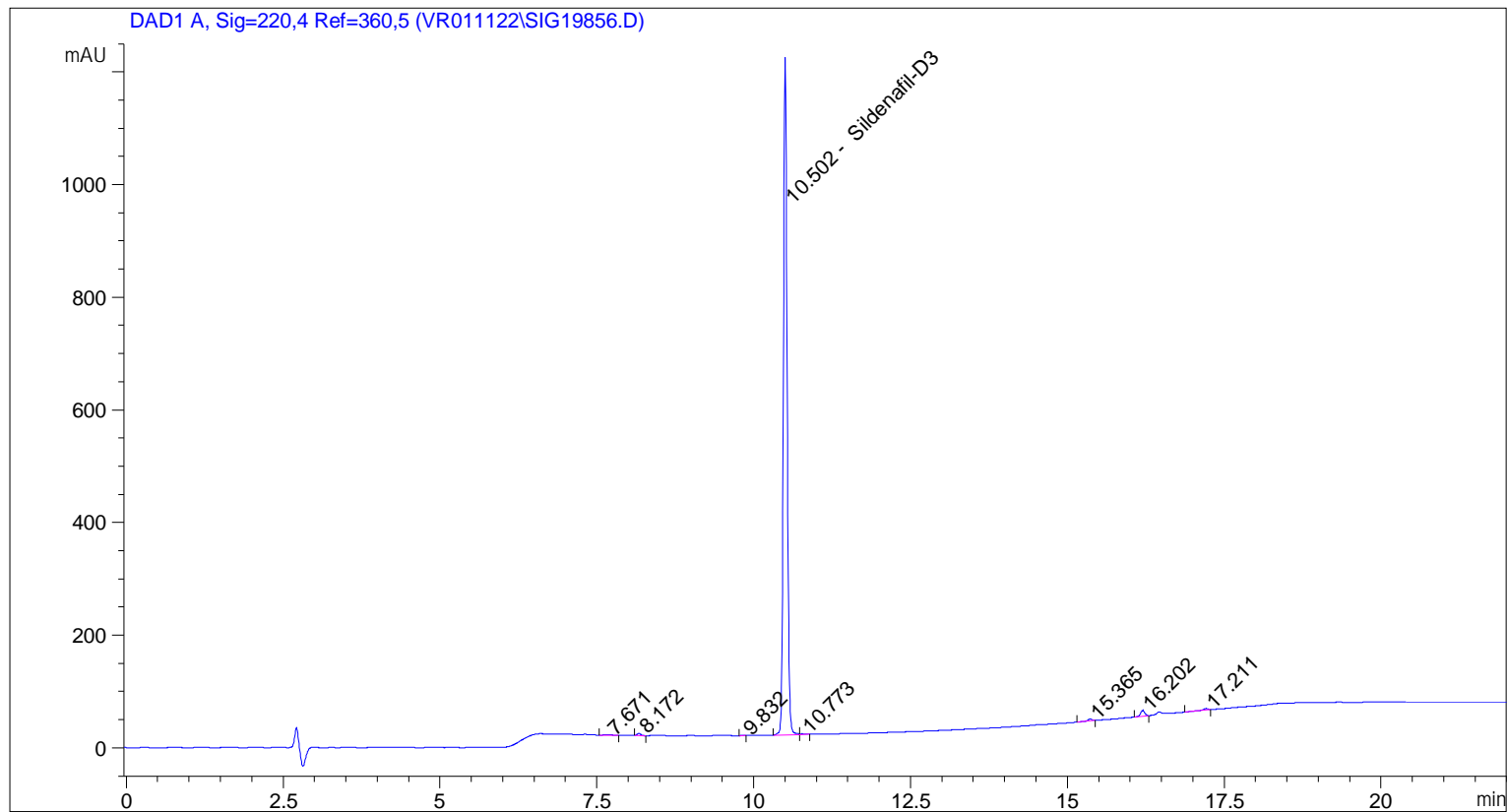
TOF MS ES+  
744



ESI-MS spectrum for sample GR-10-147. Shows monoisotopic  $[M+H]^+$  mass.

```

=====
Acq. Operator   : vrusu
Acq. Instrument : Instrument 1                Location : Vial 89
Injection Date  : 4/7/2022 8:34:09 AM
                                           Inj Volume : 5.0 µl
Acq. Method     : C:\CHEM32\1\METHODS\VR040722_147.M
Last changed    : 4/7/2022 8:33:02 AM by vrusu
Analysis Method : C:\CHEM32\1\METHODS\VR040722_147PM.M
Last changed    : 4/7/2022 1:48:26 PM by vrusu
  
```



=====  
 Area Percent Report  
 =====

```

Sorted By           :      Signal
Calib. Data Modified :      4/7/2022 1:46:43 PM
Multiplier:         :      1.0000
Dilution:           :      1.0000
Use Multiplier & Dilution Factor with ISTDs
  
```

Signal 1: DAD1 A, Sig=220,4 Ref=360,5

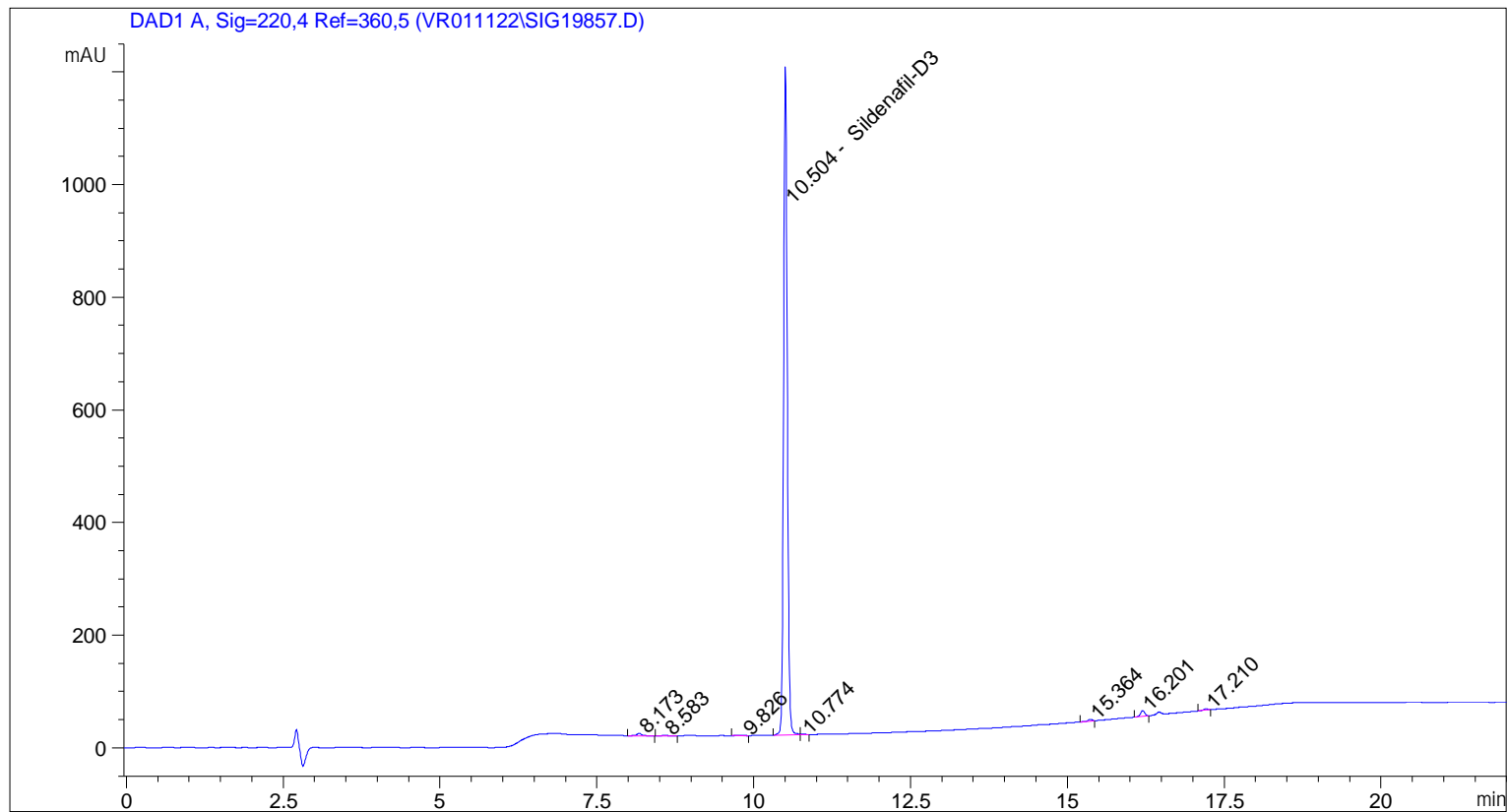
Peak #	RetTime [min]	Type	Width [min]	Area [mAU*s]	Area %	Name
1	7.671	BB	0.1407	10.37502	0.2047	?
2	8.172	BB	0.0596	14.07108	0.2776	?
3	9.832	BB	0.0532	2.13148	0.0421	?
4	10.502	BV	0.0638	4954.83838	97.7670	Sildenafil-D3
5	10.773	VB	0.0677	6.44501	0.1272	?
6	15.365	BB	0.0686	15.47645	0.3054	?
7	16.202	BB	0.0721	48.33820	0.9538	?
8	17.211	BB	0.0880	16.33237	0.3223	?

Sample Name: GR-10-147

Peak #	RetTime [min]	Type	Width [min]	Area [mAU*s]	Area %	Name
Totals :				5068.00800		

=====  
\*\*\* End of Report \*\*\*

=====  
Acq. Operator : vrusu  
Acq. Instrument : Instrument 1 Location : Vial 90  
Injection Date : 4/7/2022 9:04:59 AM Inj Volume : 5.0 µl  
Acq. Method : C:\CHEM32\1\METHODS\VR040722\_147.M  
Last changed : 4/7/2022 9:04:04 AM by vrusu  
Analysis Method : C:\CHEM32\1\METHODS\VR040722\_147PM.M  
Last changed : 4/7/2022 1:48:26 PM by vrusu



=====  
Area Percent Report  
=====

Sorted By : Signal  
Calib. Data Modified : 4/7/2022 1:46:43 PM  
Multiplier: : 1.0000  
Dilution: : 1.0000  
Use Multiplier & Dilution Factor with ISTDs

Signal 1: DAD1 A, Sig=220,4 Ref=360,5

Peak #	RetTime [min]	Type	Width [min]	Area [mAU*s]	Area %	Name
1	8.173	BB	0.0857	27.21567	0.5470	?
2	8.583	BB	0.1316	8.77285	0.1763	?
3	9.826	BB	0.0780	4.18367	0.0841	?
4	10.504	BV	0.0618	4858.18799	97.6483	Sildenafil-D3
5	10.774	VB	0.0639	5.70934	0.1148	?
6	15.364	BB	0.0675	13.00175	0.2613	?
7	16.201	BB	0.0696	46.47679	0.9342	?
8	17.210	BB	0.0729	11.64000	0.2340	?

Sample Name: GR-10-147 spl-2

Peak #	RetTime [min]	Type	Width [min]	Area [mAU*s]	Area %	Name
Totals :				4975.18807		

=====  
\*\*\* End of Report \*\*\*