

Name: *syn/anti-Norgestimate-2,2,4,6,6,10-D6*

Lot#: GR-3-149

Test Date: 03/05/2020 (re-test date: 03/05/2025)

CAS No.: 1263194-12-2

MF: C₂₃H₂₅D₆NO₃

MW: 375.54

Appearance: White Solid

Purity: 98.0% by HPLC (sum of *syn*- and *anti*- isomers); >98% atom D

¹H-NMR: Conforms

MS-ESI (+) Conforms (shows peak at m/z = 376.27 [M+H]⁺, corresponding to the D6 form)

Storage Store at 0-5°C in a dry place away from direct sunlight

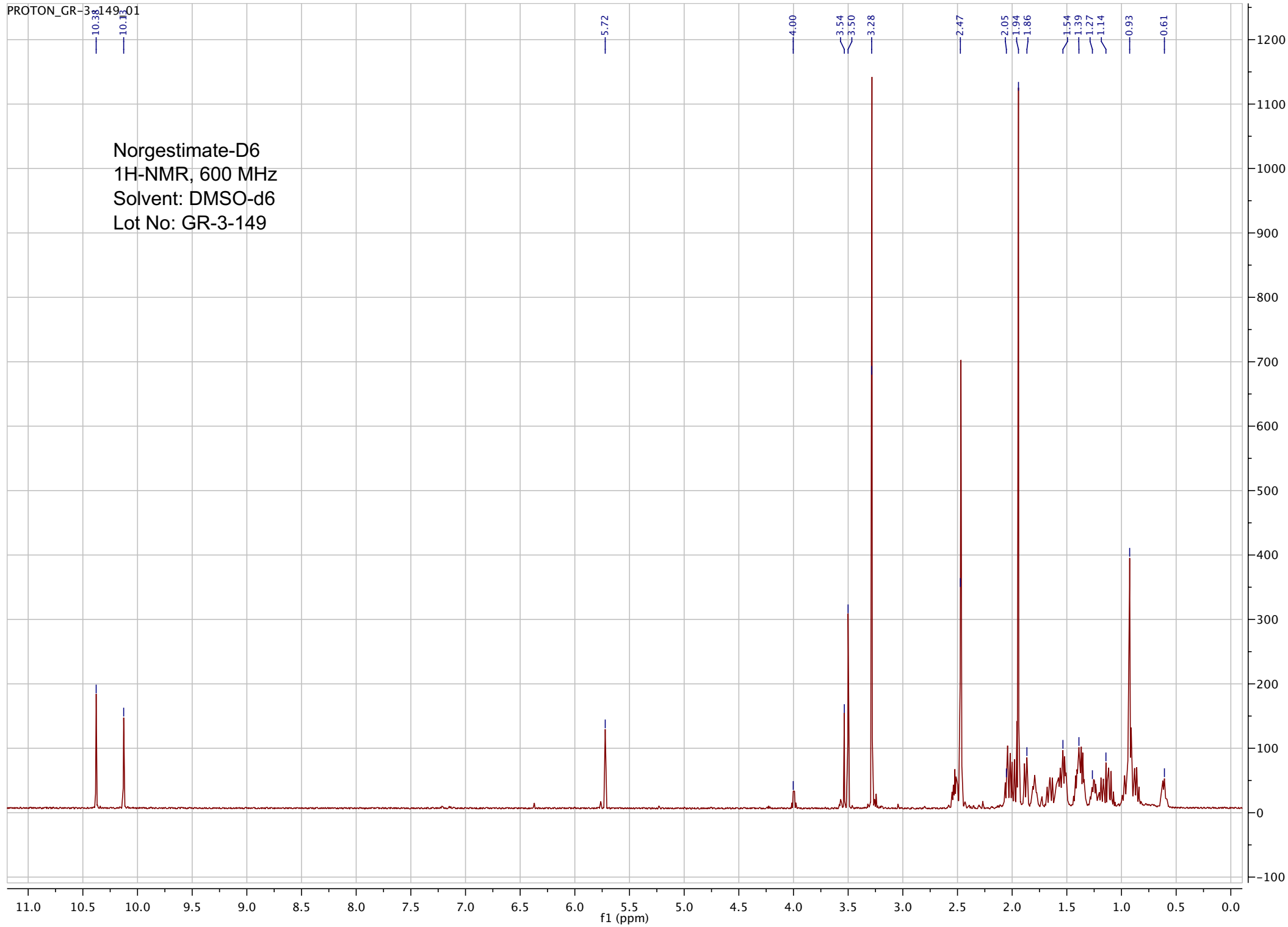
Approved by:

Date: 03/05/2020

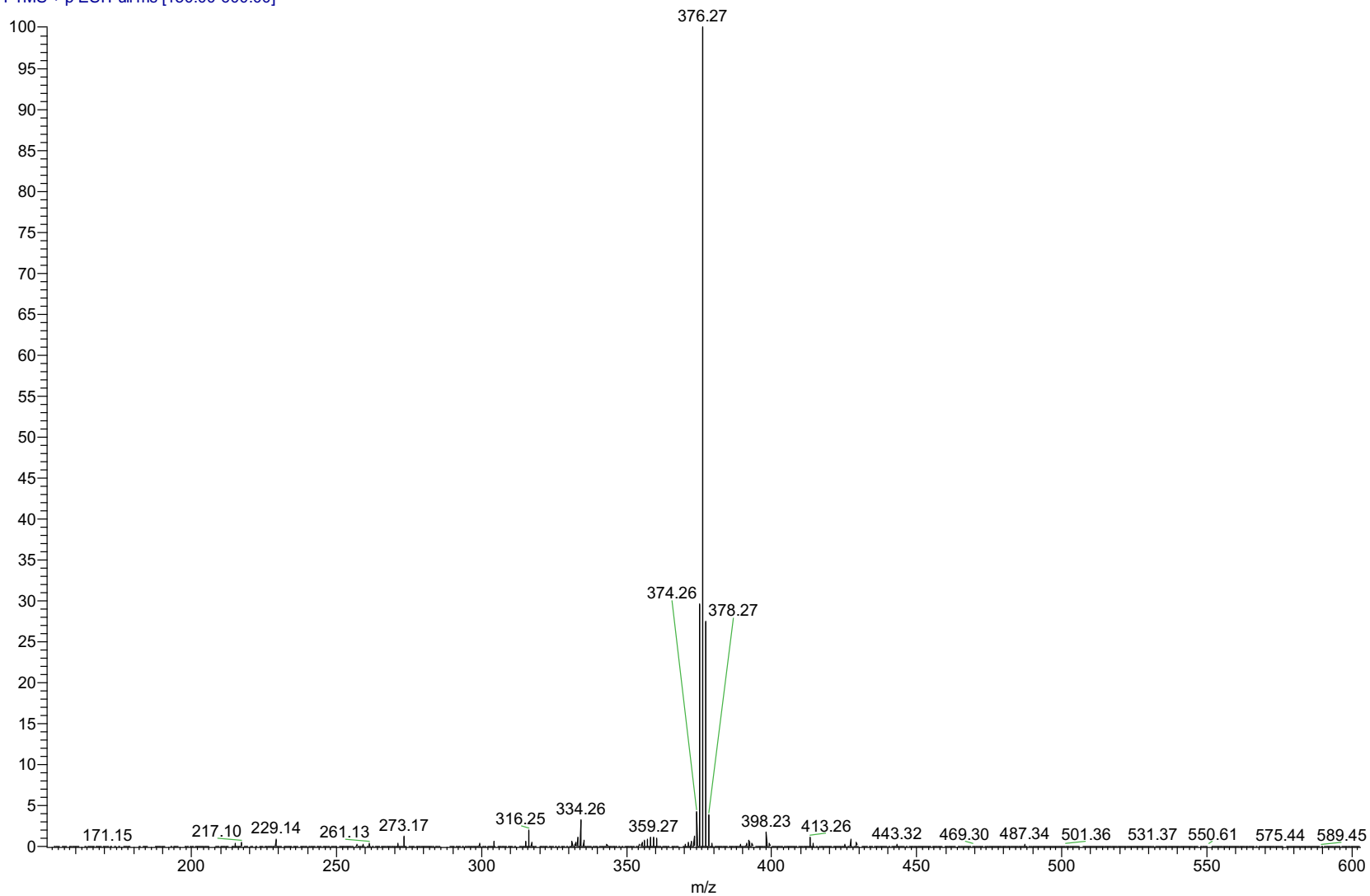


Viorica Rusu, QC/QA Manager

Norgestimate-D6
1H-NMR, 600 MHz
Solvent: DMSO-d6
Lot No: GR-3-149

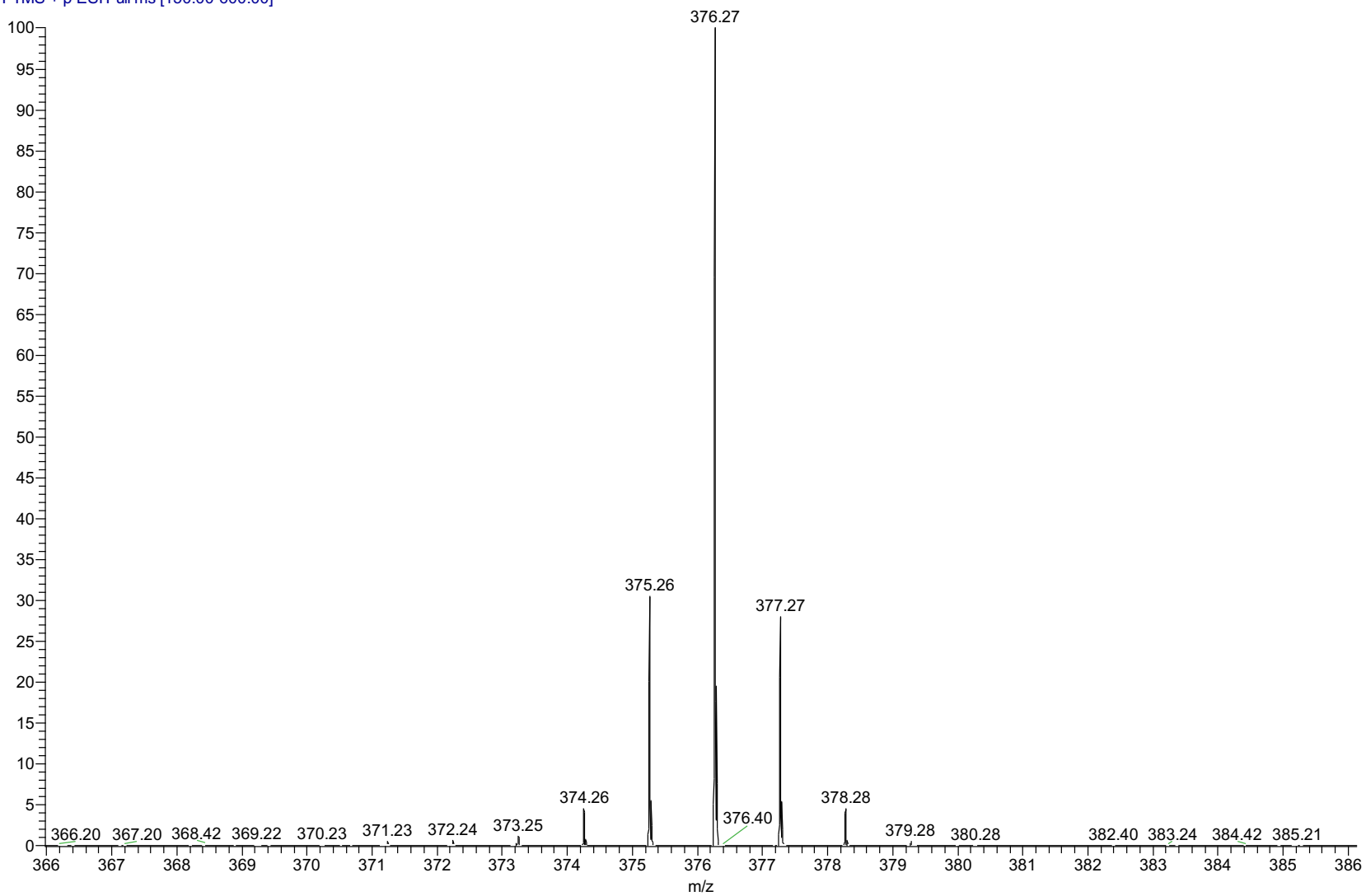


pp_2023_011_GR_3_149 #697-712 RT: 2.19-2.24 AV: 16 NL: 1.56E
T: FTMS + p ESI Full ms [150.00-600.00]



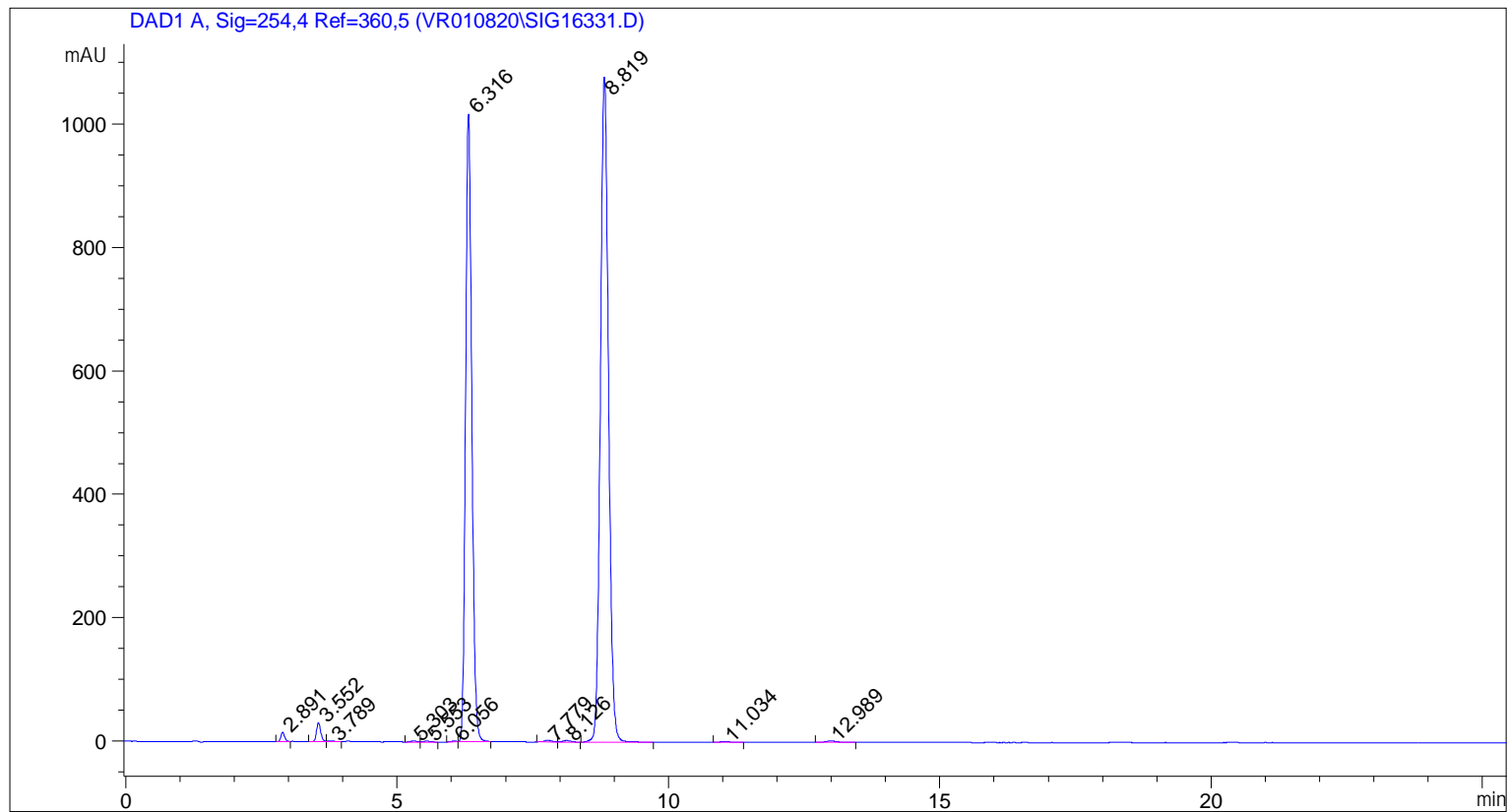
ESI-MS data for sample GR-3-149. Shows monoisotopic [M+H]⁺ mass.

pp_2023_011_GR_3_149 #624-651 RT: 1.96-2.04 AV: 28 NL: 1.77E
T: FTMS + p ESI Full ms [150.00-600.00]



```

=====
Acq. Operator   : vrusu
Acq. Instrument : Instrument 1                Location : Vial 58
Injection Date  : 3/5/2020 9:14:39 AM
                                           Inj Volume : 20.0 µl
Acq. Method     : C:\CHEM32\1\METHODS\VR030520_149.M
Last changed    : 3/5/2020 9:13:25 AM by vrusu
Analysis Method : C:\CHEM32\1\METHODS\VR030520_149PM.M
Last changed    : 3/5/2020 9:54:58 AM by vrusu
  
```



=====
 Area Percent Report
 =====

```

Sorted By      :      Signal
Multiplier:    :      1.0000
Dilution:      :      1.0000
Use Multiplier & Dilution Factor with ISTDs
  
```

Signal 1: DAD1 A, Sig=254,4 Ref=360,5

Peak #	RetTime [min]	Type	Width [min]	Area [mAU*s]	Height [mAU]	Area %
1	2.891	BV	0.0736	73.70362	15.46105	0.3733
2	3.552	BV	0.0826	168.38458	31.37576	0.8529
3	3.789	VV	0.1183	13.28292	1.54557	0.0673
4	5.303	BV	0.1176	12.45551	1.62215	0.0631
5	5.553	VB	0.1252	12.11661	1.42571	0.0614
6	6.056	BV	0.0999	8.09924	1.27826	0.0410
7	6.316	VB	0.1232	8128.79541	1017.93579	41.1737
8	7.779	BV	0.1386	25.24649	2.81682	0.1279
9	8.126	VB	0.1530	23.51449	2.42736	0.1191

Sample Name: GR-3-149

Peak #	RetTime [min]	Type	Width [min]	Area [mAU*s]	Height [mAU]	Area %
10	8.819	BB	0.1614	1.12267e4	1079.15625	56.8649
11	11.034	BB	0.1844	14.66150	1.15286	0.0743
12	12.989	BB	0.2335	35.76145	2.35044	0.1811

Totals : 1.97427e4 2158.54802

=====
*** End of Report ***