

<b>Name:</b>	Omeprazole-D3
<b>Lot#:</b>	GR-9-145
<b>Test Date:</b>	11/14/2022 (re-test date: 11/14/2027)
<b>CAS No.:</b>	922731-01-9
<b>MF:</b>	C <sub>17</sub> H <sub>16</sub> D <sub>3</sub> N <sub>3</sub> O <sub>3</sub> S
<b>MW:</b>	348.43
<b>Appearance:</b>	Pale yellow solid
<b>Purity:</b>	98.1% by HPLC (average of two sample preparations); 99% atom D
<b><sup>1</sup>H-NMR:</b>	Conforms
<b>MS-ESI (+)</b>	Conforms (shows peak at m/z = 349.15 [M+H] <sup>+</sup> )
<b>Storage</b>	Long term store at - 18° C in a dry place away from direct sunlight

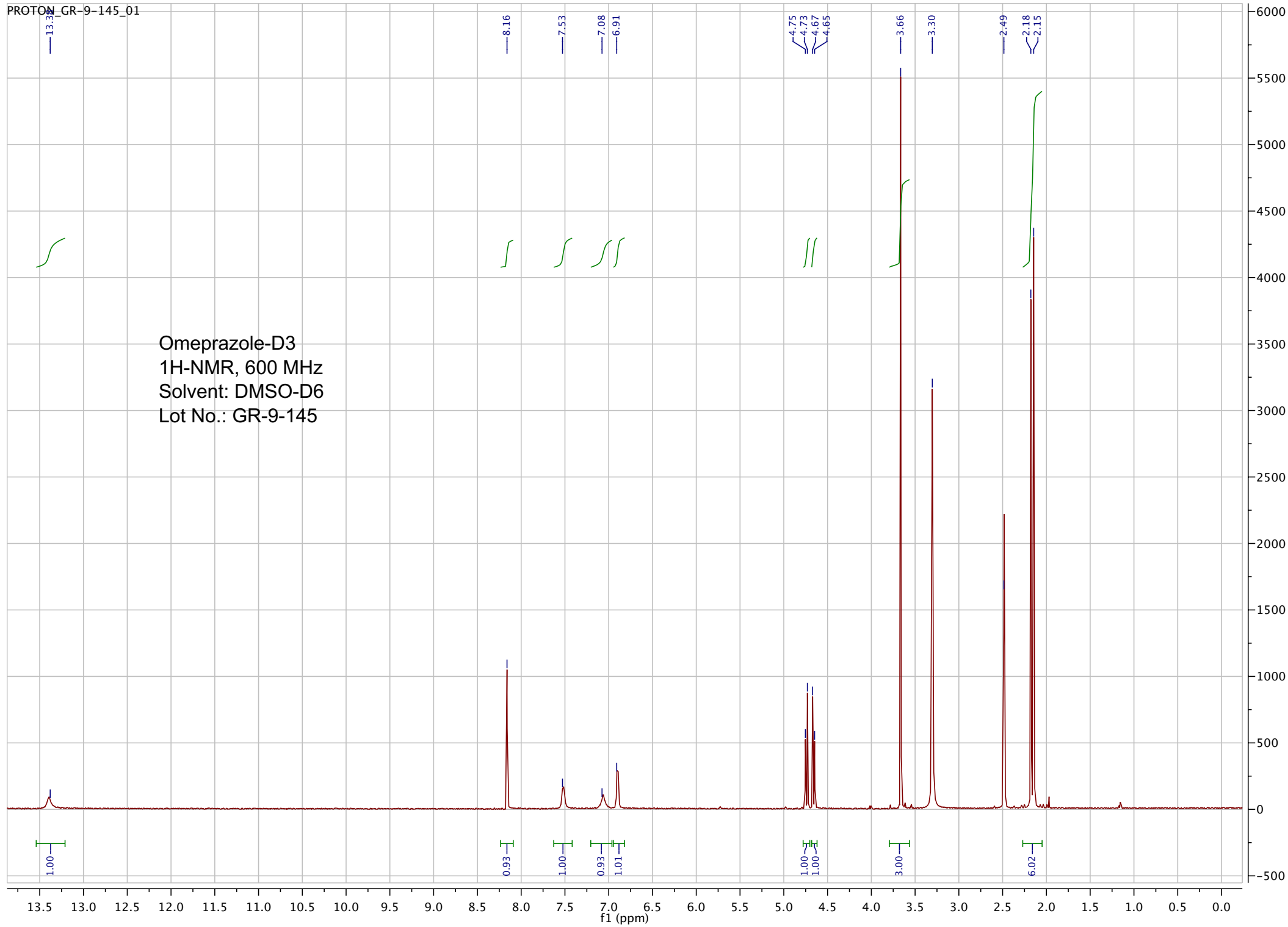
Approved by:

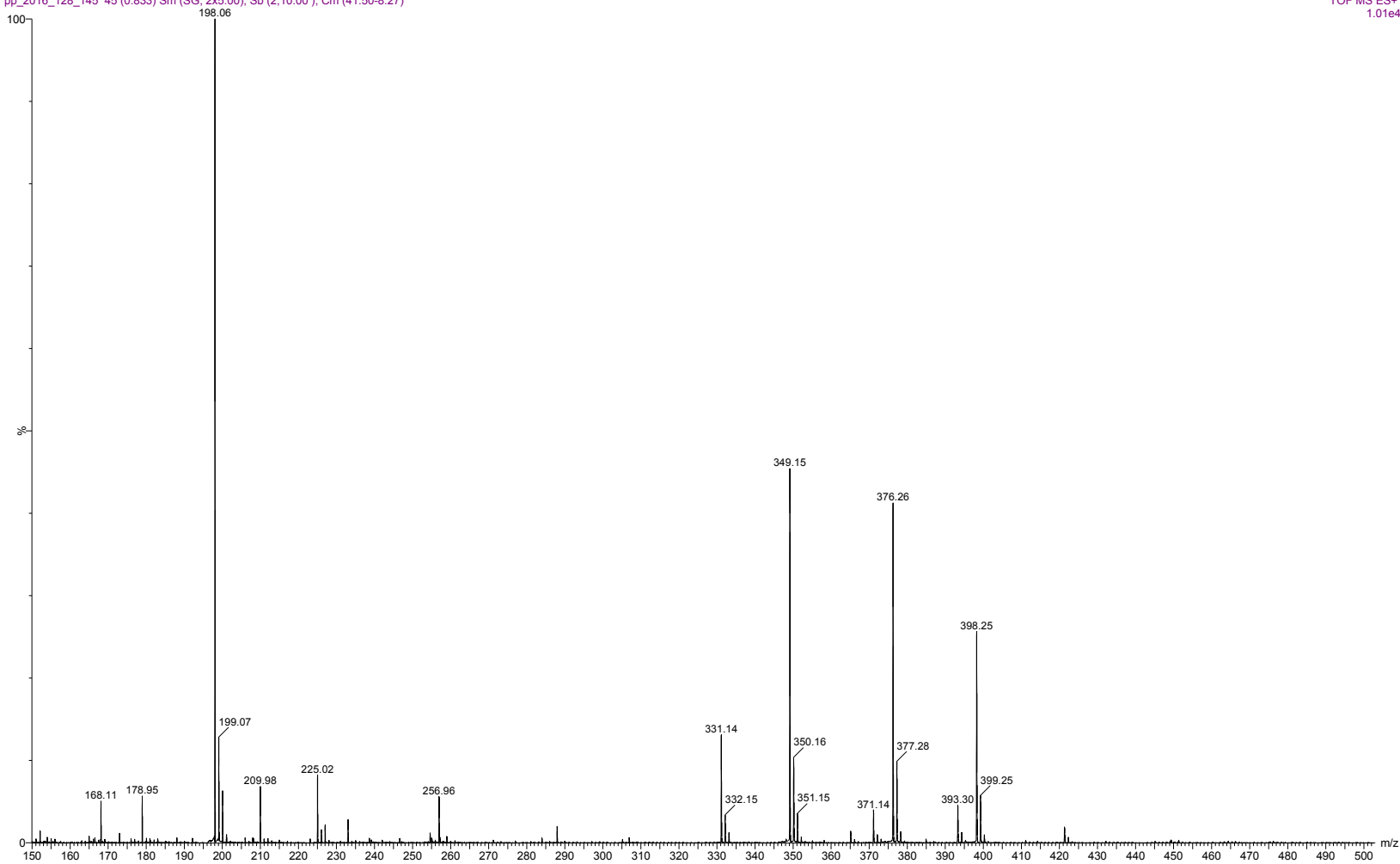
Date: 11/14/2022



Viorica Rusu, QC/QA Manager

Omeprazole-D3  
 1H-NMR, 600 MHz  
 Solvent: DMSO-D6  
 Lot No.: GR-9-145



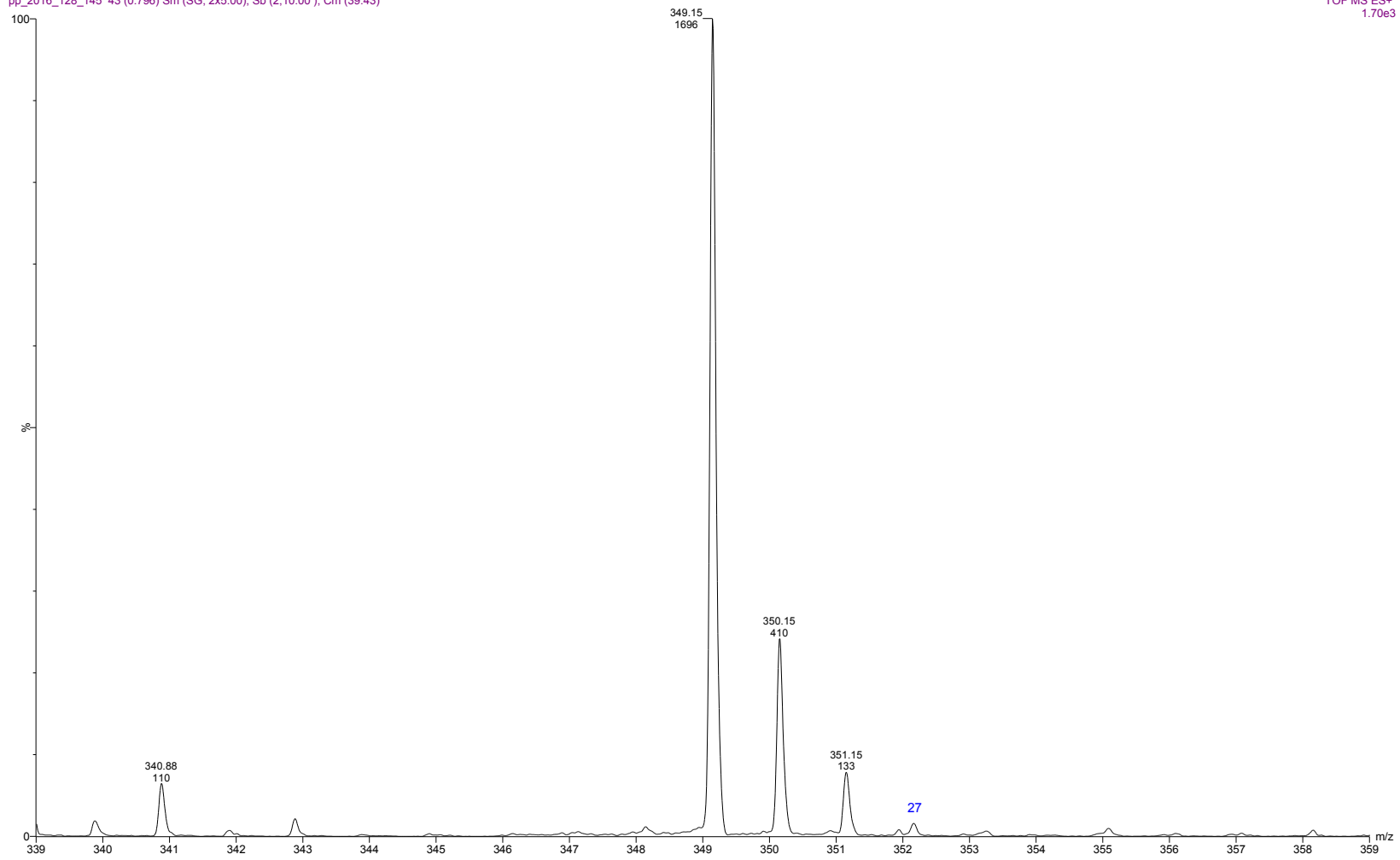


ESI-MS spectrum for sample GR-9-145. Shows monoisotopic  $[M+H]^+$  mass.

pp\_2016\_128\_145 43 (0.796) Sm (SG, 2x5.00); Sb (2,10.00); Cm (39:43)

7.00000000

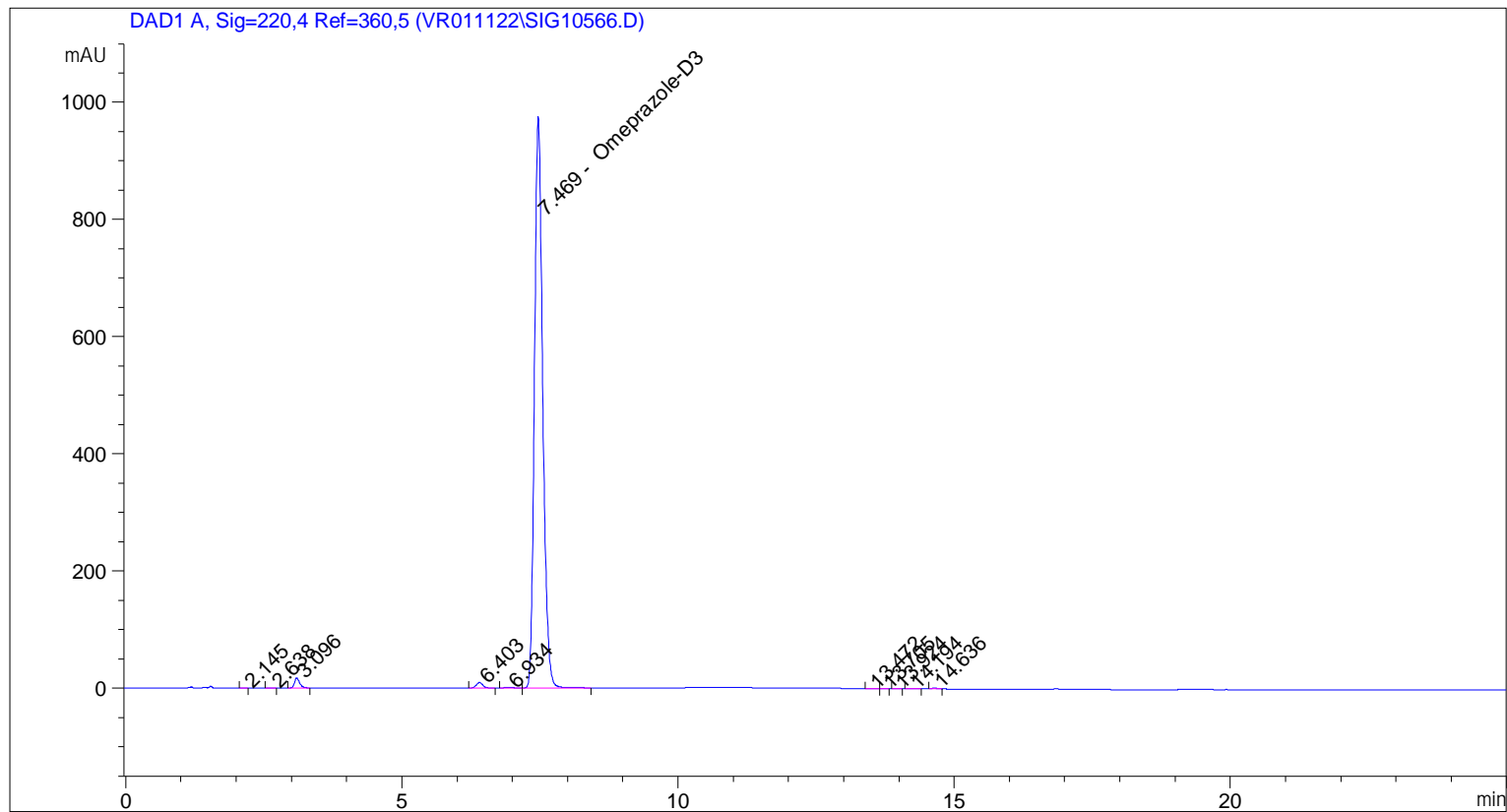
23-Nov-2016, 16:52:37  
TOF MS ES+  
1.70e3



Expansion of above with intensity labels.

```

=====
Acq. Operator   : vrusu
Acq. Instrument : Instrument 1                Location : Vial 5
Injection Date  : 11/11/2022 1:48:20 PM
                                           Inj Volume : 5.0 µl
Acq. Method    : C:\CHEM32\1\METHODS\VR111122_145.M
Last changed   : 11/11/2022 1:47:15 PM by vrusu
Analysis Method: C:\CHEM32\1\METHODS\VR111422_145PM.M
Last changed   : 11/14/2022 12:21:46 PM by vrusu
  
```



=====  
 Area Percent Report  
 =====

```

Sorted By      : Signal
Calib. Data Modified : 11/14/2022 12:21:24 PM
Multiplier:    : 1.0000
Dilution:     : 1.0000
Use Multiplier & Dilution Factor with ISTDs
  
```

Signal 1: DAD1 A, Sig=220,4 Ref=360,5

Peak #	RetTime [min]	Type	Width [min]	Area [mAU*s]	Area %	Name
1	2.145	BB	0.0683	7.18816e-1	6.968e-3	?
2	2.638	BB	0.0827	1.02035	9.892e-3	?
3	3.096	VV	0.0956	106.66930	1.0341	?
4	6.403	BB	0.1201	71.32893	0.6915	?
5	6.934	BB	0.1457	6.82058	0.0661	?
6	7.469	BB	0.1590	1.01145e4	98.0527	Omeprazole-D3
7	13.472	BV	0.0869	1.28858	0.0125	?
8	13.705	VB	0.0605	1.08187	0.0105	?

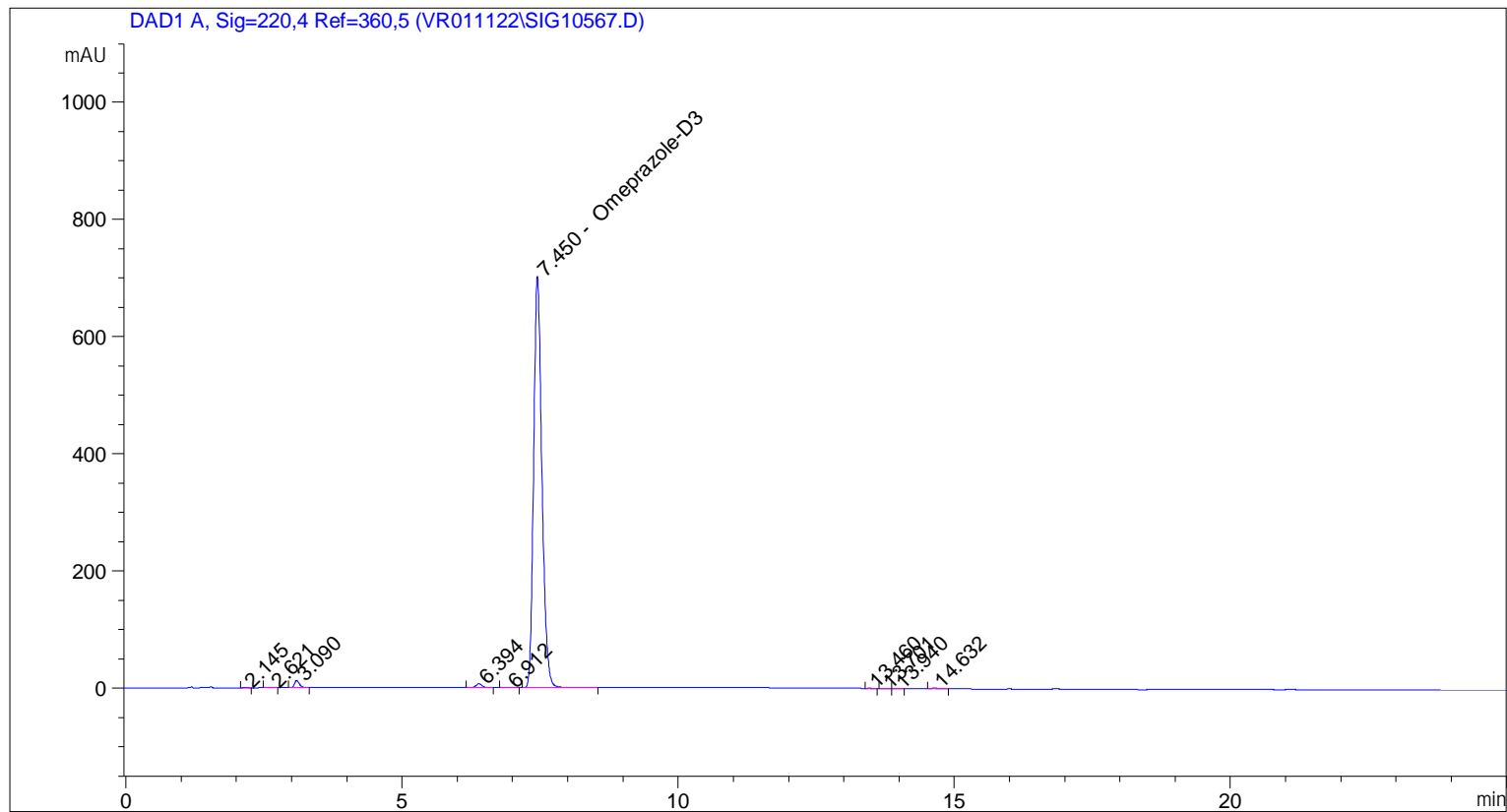
Sample Name: GR-9-145

Peak #	RetTime [min]	Type	Width [min]	Area [mAU*s]	Area %	Name
9	13.924	BB	0.1024	9.07135e-1	8.794e-3	?
10	14.194	BB	0.0891	2.08684	0.0202	?
11	14.636	BB	0.0822	8.95032	0.0868	?

Totals : 1.03154e4

=====  
\*\*\* End of Report \*\*\*

=====  
Acq. Operator : vrusu  
Acq. Instrument : Instrument 1 Location : Vial 6  
Injection Date : 11/11/2022 2:17:58 PM Inj Volume : 5.0 µl  
Acq. Method : C:\CHEM32\1\METHODS\VR111122\_145.M  
Last changed : 11/11/2022 2:16:39 PM by vrusu  
Analysis Method : C:\CHEM32\1\METHODS\VR111422\_145PM.M  
Last changed : 11/14/2022 12:49:15 PM by vrusu



=====  
Area Percent Report  
=====

Sorted By : Signal  
Calib. Data Modified : 11/14/2022 12:21:24 PM  
Multiplier: : 1.0000  
Dilution: : 1.0000  
Use Multiplier & Dilution Factor with ISTDs

Signal 1: DAD1 A, Sig=220,4 Ref=360,5

Peak #	RetTime [min]	Type	Width [min]	Area [mAU*s]	Area %	Name
1	2.145	BV	0.0834	8.79881e-1	0.0118	?
2	2.621	VB	0.0980	9.32625e-1	0.0125	?
3	3.090	VV	0.0949	75.94463	1.0173	?
4	6.394	BB	0.1199	51.91636	0.6954	?
5	6.912	BB	0.1358	4.88720	0.0655	?
6	7.450	BB	0.1576	7321.11768	98.0645	Omeprazole-D3
7	13.460	BB	0.0914	8.06522e-1	0.0108	?
8	13.701	BV	0.0576	7.87514e-1	0.0105	?

Sample Name: GR-9-145 spl-2

Peak #	RetTime [min]	Type	Width [min]	Area [mAU*s]	Area %	Name
9	13.940	VB	0.1132	9.63694e-1	0.0129	?
10	14.632	BB	0.0885	7.38087	0.0989	?

Totals : 7465.61697

=====  
\*\*\* End of Report \*\*\*