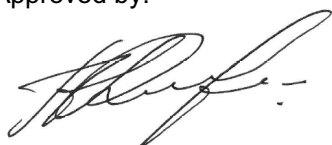


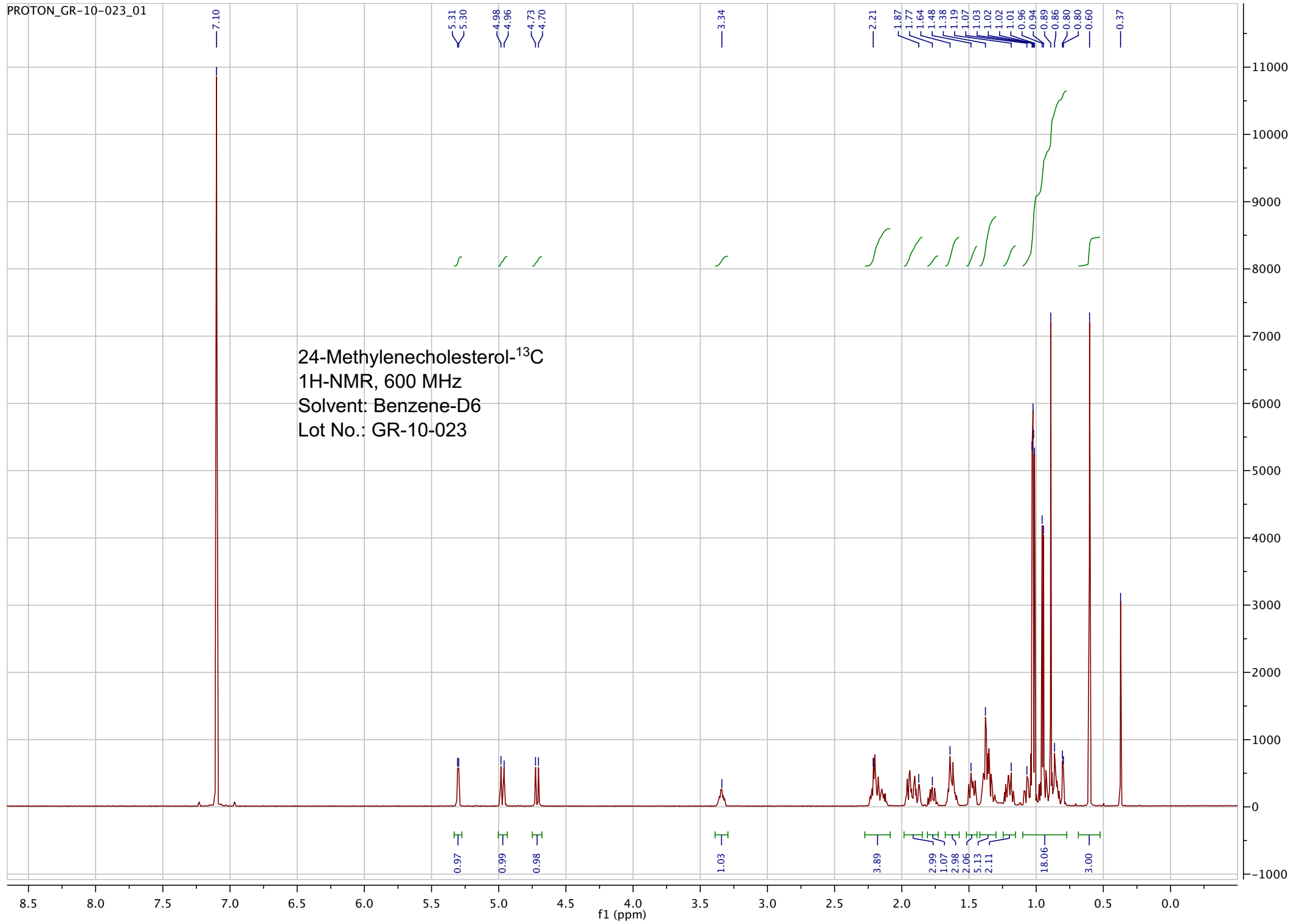
<b>Name:</b>	24-Methylenecholesterol- <sup>13</sup> C
<b>Lot#:</b>	GR-10-023
<b>Test Date:</b>	04/29/2022 (re-test date: 04/29/2027)
<b>CAS No.:</b>	474-63-5 (unlabeled)
<b>MF:</b>	C <sub>27</sub> <sup>13</sup> CH <sub>46</sub> O
<b>MW:</b>	399.67
<b>Appearance:</b>	White solid
<b>Purity:</b>	98.9% by HPLC; 99% atom <sup>13</sup> C
<b><sup>1</sup>H-NMR:</b>	Conforms
<b>MS-ESI (+)</b>	Conforms (shows peak at m/z = 382.69 [M-H <sub>2</sub> O+H] <sup>+</sup> )
<b>Storage</b>	Store at -18°C in a dry place away from direct sunlight

Approved by:

Date: 04/29/2022



Viorica Rusu, QC/QA Manager

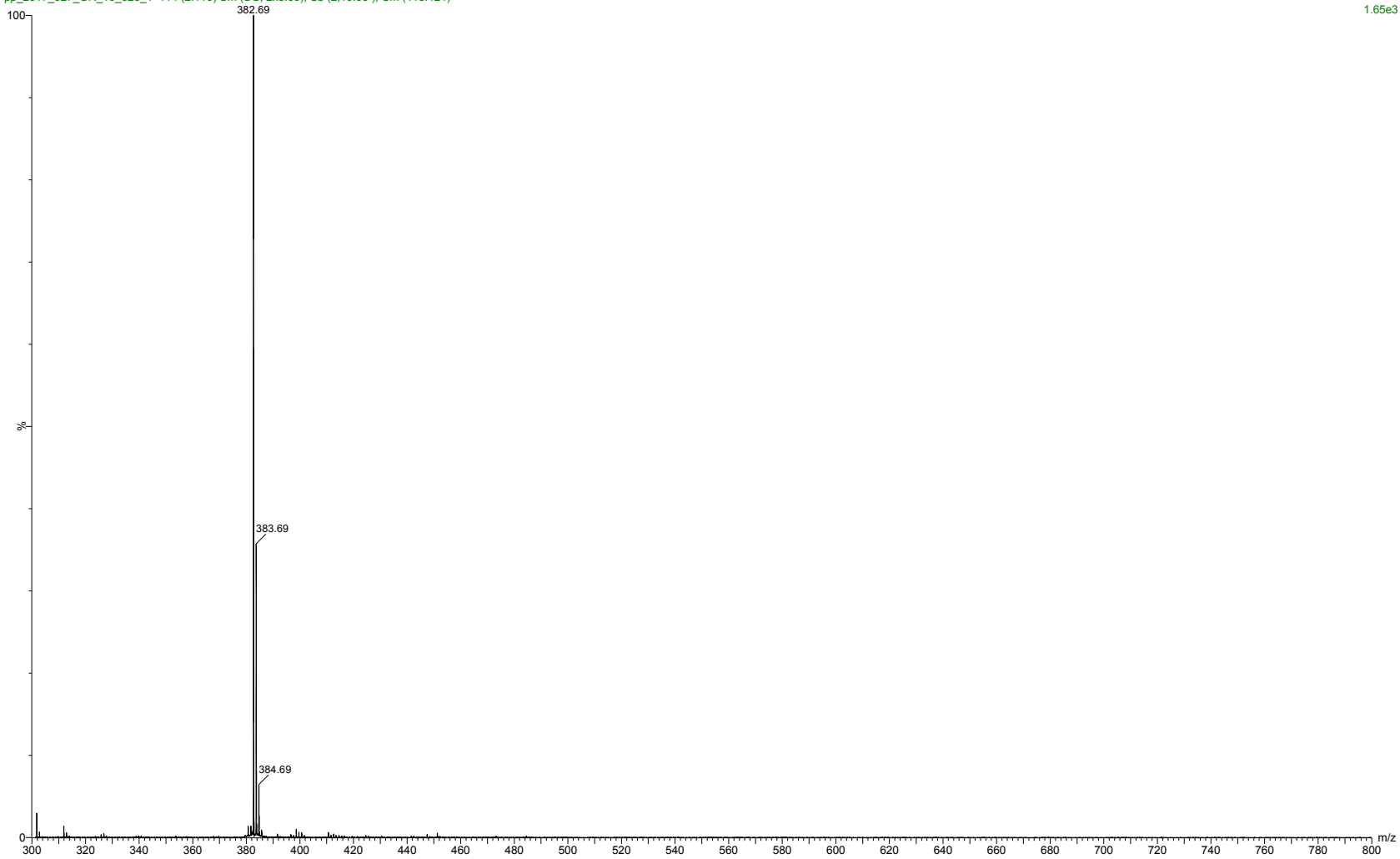


pp\_2017\_027\_GR\_10\_023\_1 114 (2.110) Sm (SG, 2x5.00); Sb (2,10.00 ); Cm (113:121)

7.0000000

1.65e3

1: TOF MS ES+

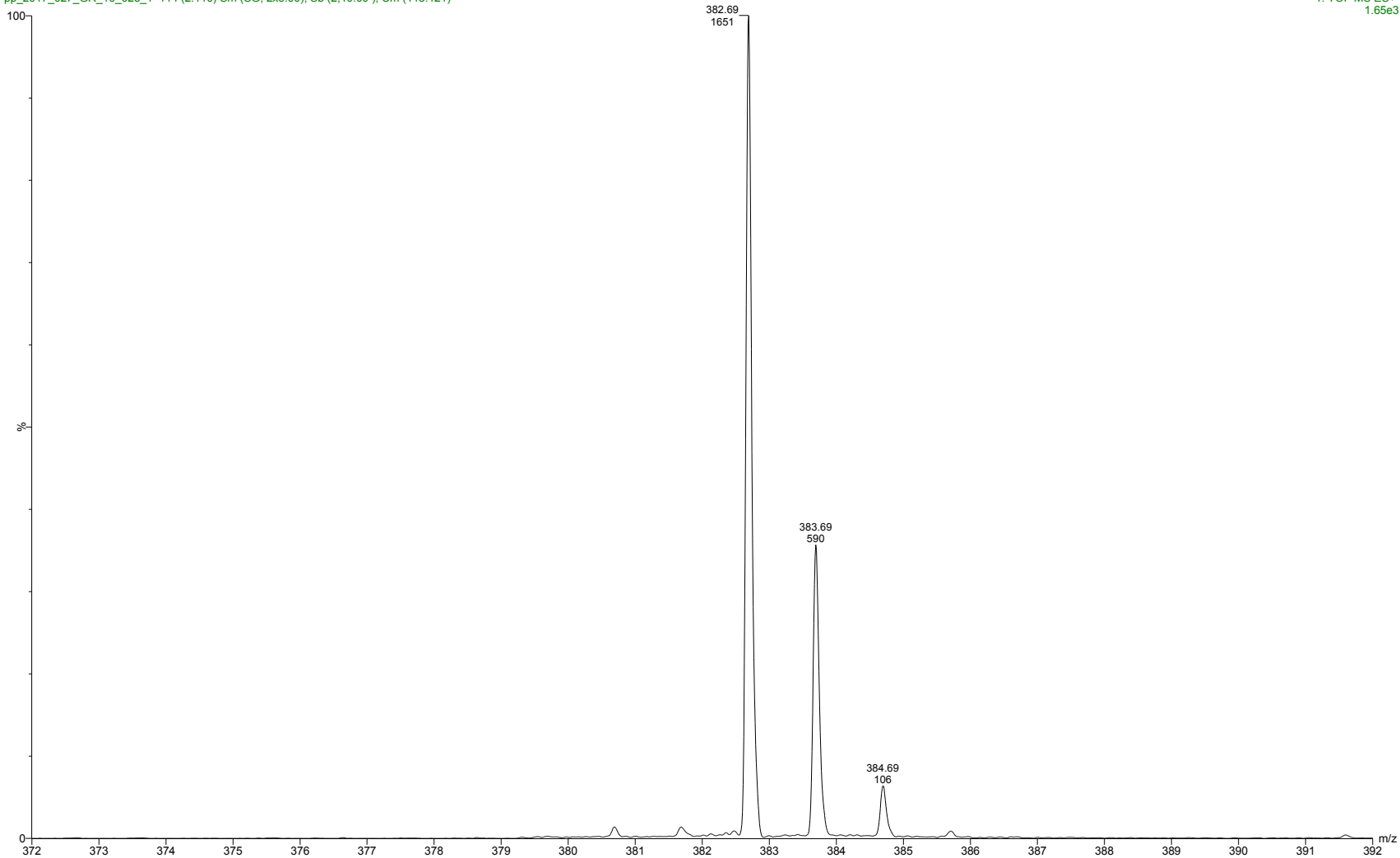


ESI-MS spectra for sample GR-10-023. Shows monoisotopic [M+H]<sup>+</sup> mass.

pp\_2017\_027\_GR\_10\_023\_1 114 (2.110) Sm (SG, 2x5.00); Sb (2,10.00 ); Cm (113:121)

7.0000000

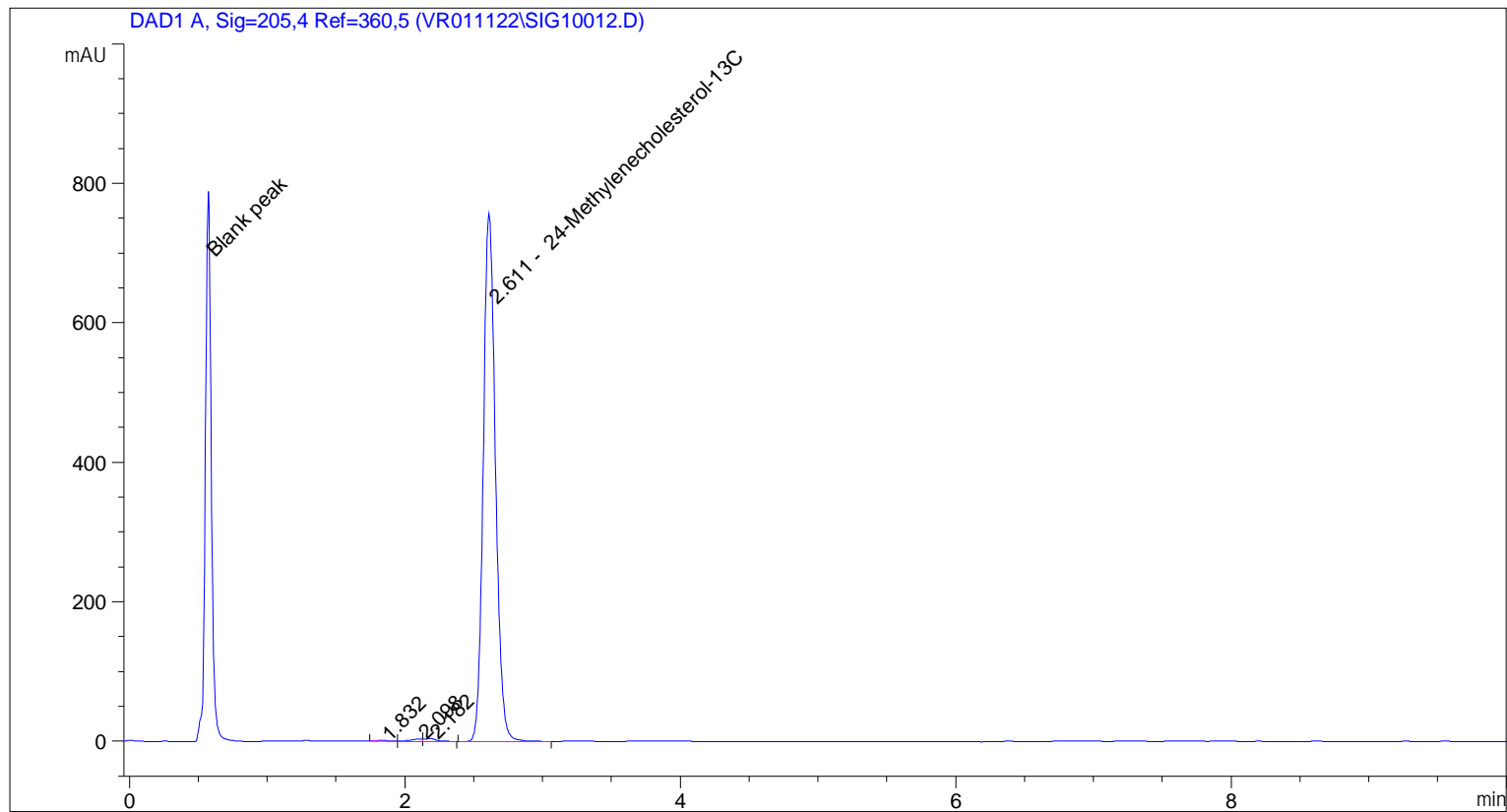
1: TOF MS ES+  
1.65e3



Expansion of above with intensity labels.

```

=====
Acq. Operator   : vrusu
Acq. Instrument : Instrument 1                Location : Vial 18
Injection Date  : 4/28/2022 1:54:21 PM
                                           Inj Volume : 10.0 µl
Acq. Method    : C:\CHEM32\1\METHODS\VR042822_023.M
Last changed   : 4/28/2022 1:53:12 PM by vrusu
Analysis Method: C:\CHEM32\1\METHODS\VR042922_023PM.M
Last changed   : 4/29/2022 1:42:46 PM by vrusu
  
```



=====  
 Area Percent Report  
 =====

```

Sorted By      :      Signal
Calib. Data Modified : 4/29/2022 1:42:31 PM
Multiplier:    :      1.0000
Dilution:     :      1.0000
Use Multiplier & Dilution Factor with ISTDs
  
```

Signal 1: DAD1 A, Sig=205,4 Ref=360,5

Peak #	RetTime [min]	Type	Width [min]	Area [mAU*s]	Area %	Name
1	1.832	BV	0.0809	8.49501	0.1803	?
2	2.098	VV	0.0859	19.69316	0.4179	?
3	2.182	VB	0.0866	25.87086	0.5490	?
4	2.611	BB	0.0938	4658.23633	98.8528	24-Methylenecholesterol-13C

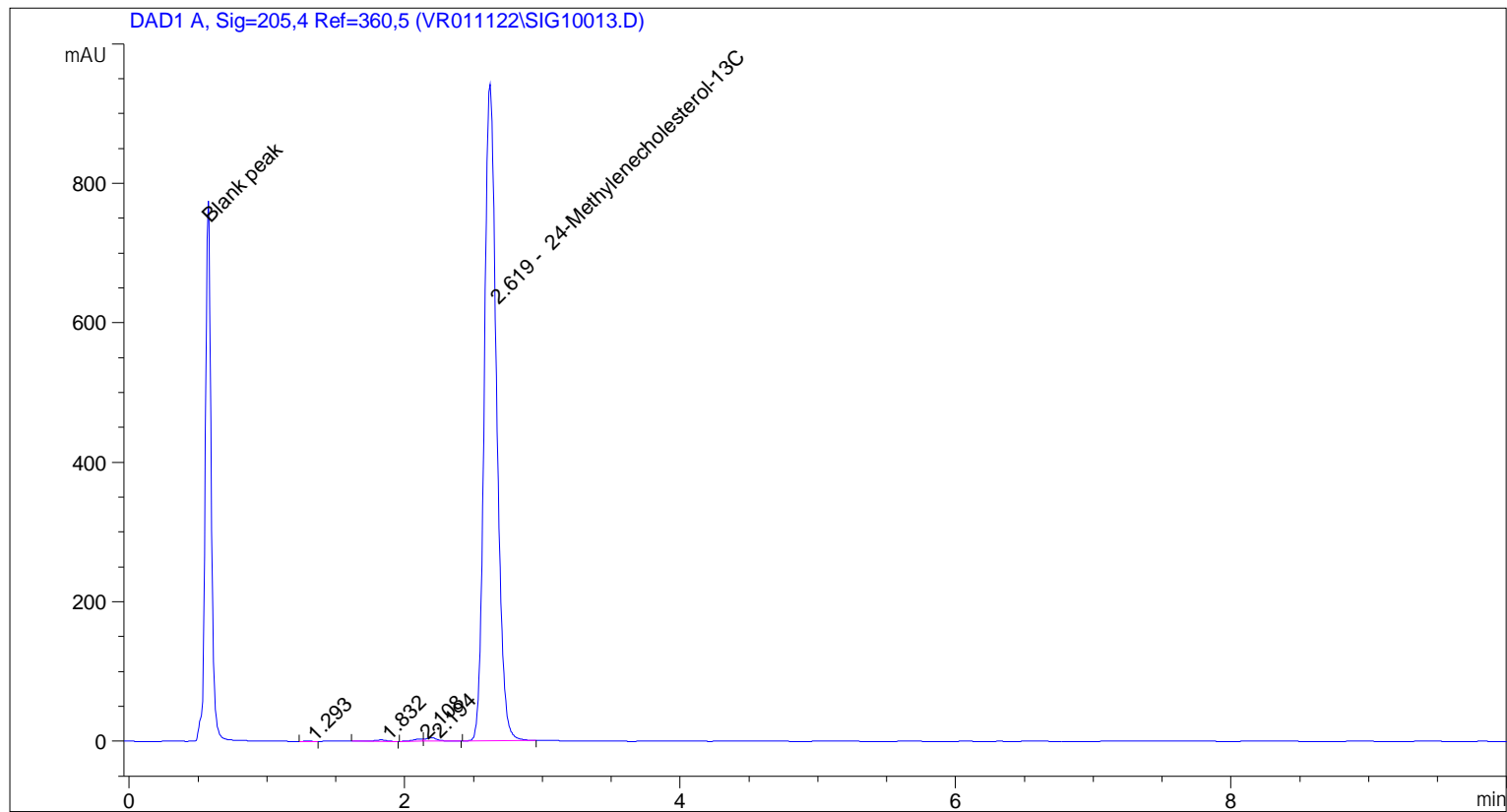
Totals : 4712.29536

=====

\*\*\* End of Report \*\*\*

```

=====
Acq. Operator   : vrusu
Acq. Instrument : Instrument 1                Location : Vial 19
Injection Date  : 4/28/2022 2:06:17 PM
                                           Inj Volume : 10.0 µl
Acq. Method     : C:\CHEM32\1\METHODS\VR042822_023.M
Last changed    : 4/28/2022 2:05:06 PM by vrusu
Analysis Method : C:\CHEM32\1\METHODS\VR042922_023PM.M
Last changed    : 4/29/2022 1:42:46 PM by vrusu
  
```



=====  
 Area Percent Report  
 =====

```

Sorted By           :      Signal
Calib. Data Modified :      4/29/2022 1:42:31 PM
Multiplier:         :      1.0000
Dilution:           :      1.0000
Use Multiplier & Dilution Factor with ISTDs
  
```

Signal 1: DAD1 A, Sig=205,4 Ref=360,5

Peak #	RetTime [min]	Type	Width [min]	Area [mAU*s]	Area %	Name
1	1.293	BB	0.0588	2.27828	0.0385	?
2	1.832	BB	0.1096	15.73713	0.2661	?
3	2.108	BV	0.0735	16.30740	0.2757	?
4	2.194	VB	0.0857	29.65811	0.5015	?
5	2.619	BB	0.0965	5849.86816	98.9181	24-Methylenecholesterol-13C

Totals : 5913.84908

=====

\*\*\* End of Report \*\*\*