

Name:	7α-Methylthio Spironolactone-D3
Lot#:	VR-2-145
Test Date:	02/16/2022 (re-test date: 02/16/2027)
CAS No.:	38753-77-4 (unlabeled)
MF:	C ₂₃ H ₂₉ D ₃ O ₃ S
MW:	391.56
Appearance:	White solid
Purity:	99.0% by HPLC; 99% atom D
¹H-NMR:	Conforms
MS-ESI (+)	Conforms (shows peak at m/z = 392.19[M+H] ⁺)
Storage	Store at -18°C in a dry place away from direct sunlight

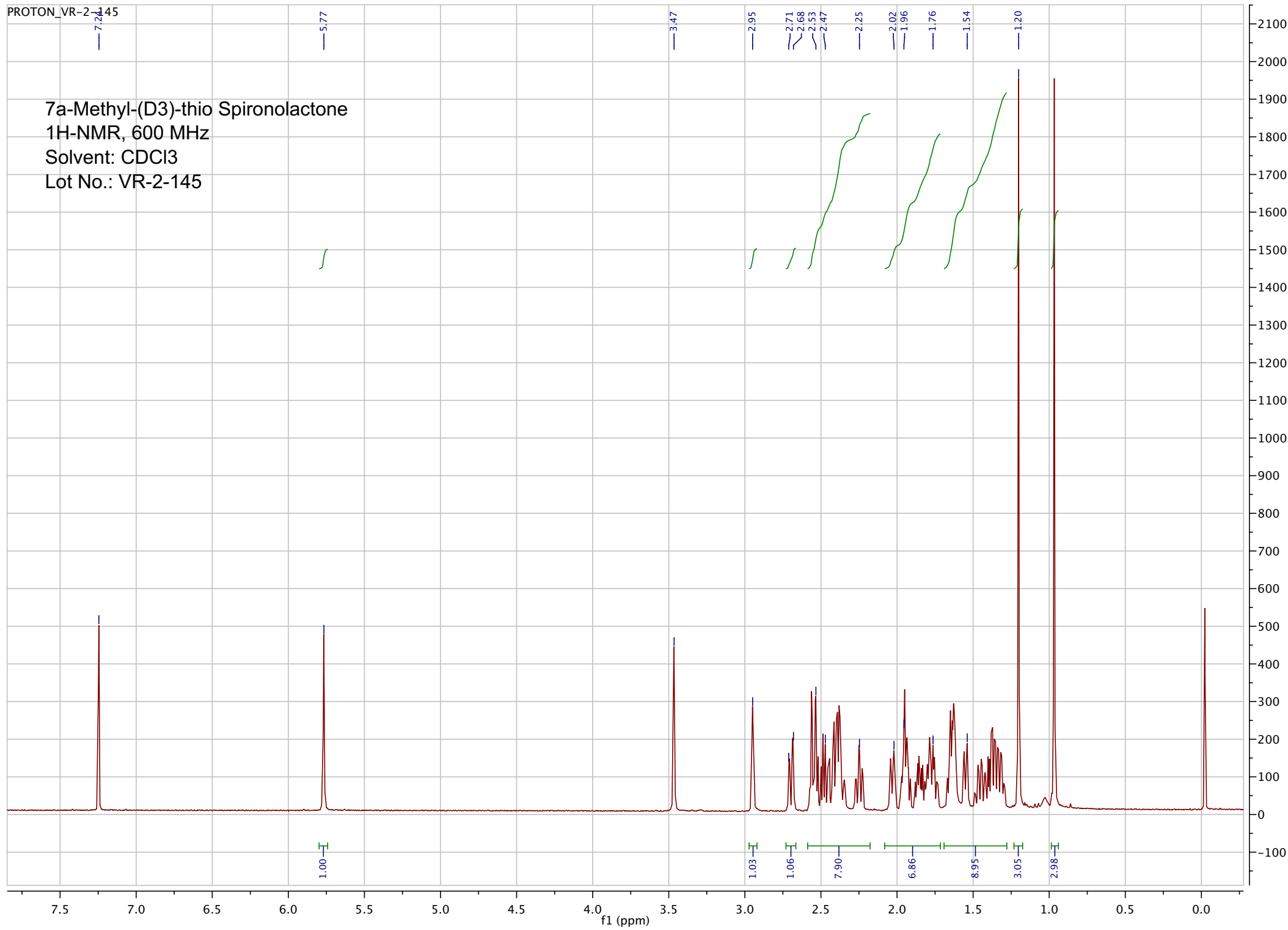
Approved by:

Date: 02/16/2022

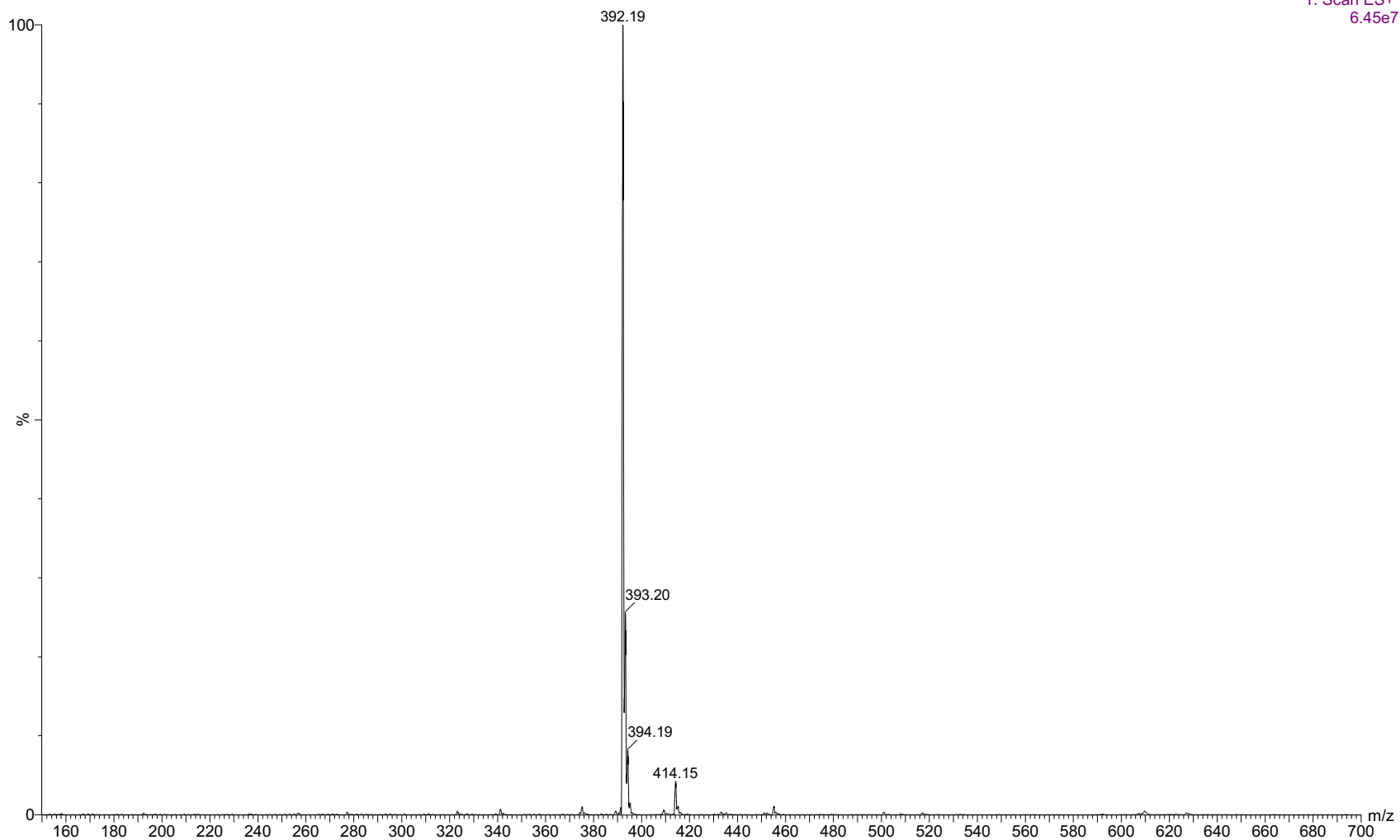


Viorica Rusu, QC/QA Manager

7a-Methyl-(D3)-thio Spironolactone
1H-NMR, 600 MHz
Solvent: CDCl3
Lot No.: VR-2-145



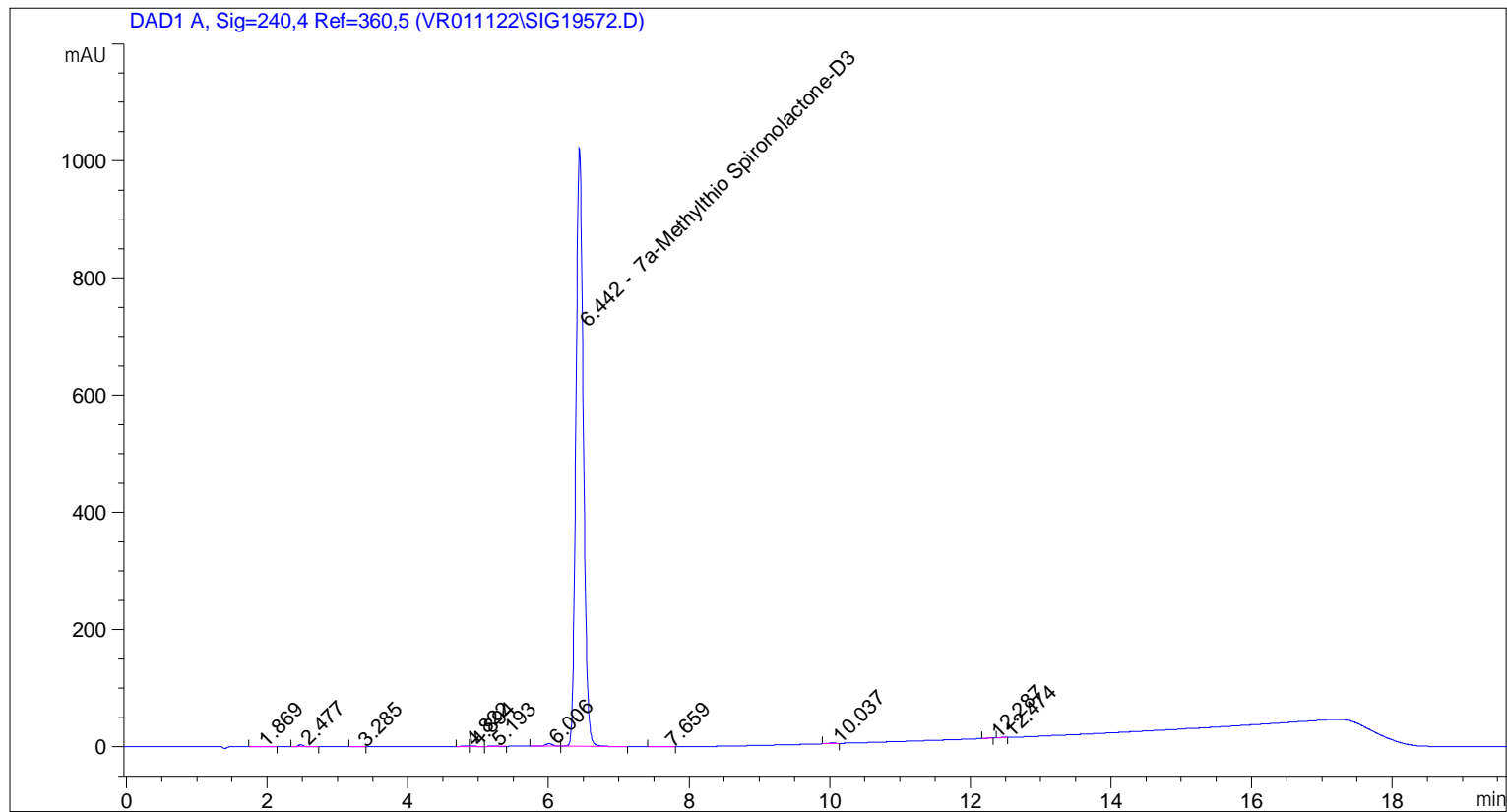
1: Scan ES+
6.45e7



ESI-MS data for VR-2-145. Shows monoisotopic [M+H]⁺ mass.

```

=====
Acq. Operator   : vrusu
Acq. Instrument : Instrument 1                Location : Vial 36
Injection Date  : 2/16/2022 12:28:02 PM
                                           Inj Volume : 5.0 µl
Acq. Method    : C:\CHEM32\1\METHODS\VR021622_145.M
Last changed   : 2/16/2022 12:27:15 PM by vrusu
Analysis Method: C:\CHEM32\1\METHODS\VR021622_145PM.M
Last changed   : 2/16/2022 1:13:01 PM by vrusu
  
```



Area Percent Report

```

Sorted By           : Signal
Calib. Data Modified : 2/16/2022 12:49:57 PM
Multiplier:         : 1.0000
Dilution:           : 1.0000
Use Multiplier & Dilution Factor with ISTDs
  
```

Signal 1: DAD1 A, Sig=240,4 Ref=360,5

Peak #	RetTime [min]	Type	Width [min]	Area [mAU*s]	Area %	Name
1	1.869	BB	0.1237	2.00319	0.0265	?
2	2.477	BB	0.0653	15.24763	0.2016	?
3	3.285	BB	0.0829	7.06978e-1	9.350e-3	?
4	4.822	BV	0.0927	3.73733	0.0494	?
5	4.894	VV	0.0843	2.61381	0.0346	?
6	5.193	VB	0.1017	1.86567	0.0247	?
7	6.006	BV	0.1162	36.10131	0.4774	?
8	6.442	VB	0.1134	7487.51953	99.0222	7a-Methylthio Spironolactone-D3

Sample Name: VR-2-145

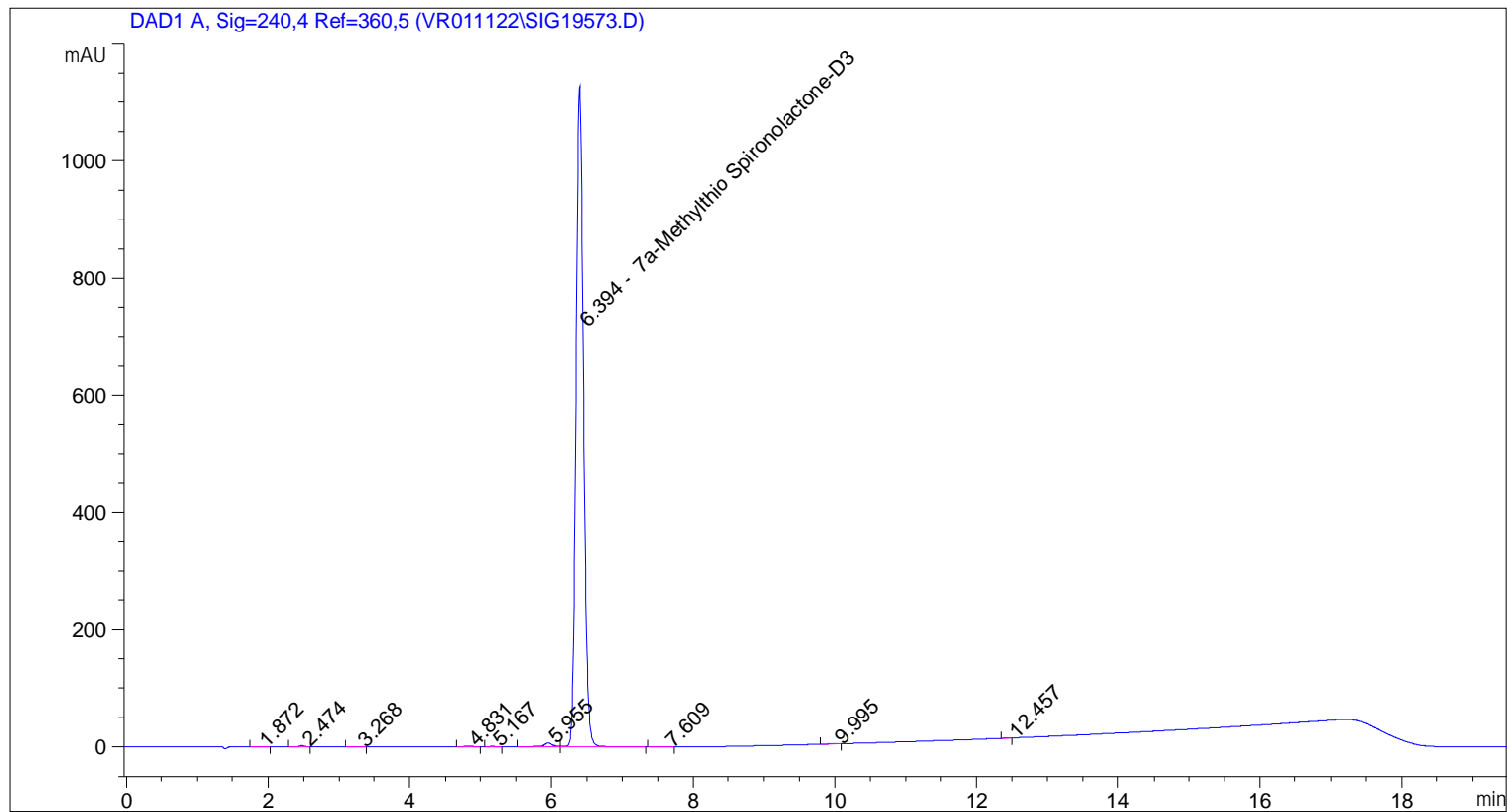
Peak #	RetTime [min]	Type	Width [min]	Area [mAU*s]	Area %	Name
9	7.659	BB	0.1658	2.22173	0.0294	?
10	10.037	BB	0.1045	5.65789	0.0748	?
11	12.287	BB	0.0868	1.38696	0.0183	?
12	12.474	BB	0.0780	2.39217	0.0316	?

Totals : 7561.45420

=====
*** End of Report ***

```

=====
Acq. Operator   : vrusu
Acq. Instrument : Instrument 1                Location : Vial 37
Injection Date  : 2/16/2022 12:49:23 PM
                                           Inj Volume : 5.0 µl
Acq. Method     : C:\CHEM32\1\METHODS\VR021622_145.M
Last changed    : 2/16/2022 12:48:34 PM by vrusu
Analysis Method  : C:\CHEM32\1\METHODS\VR021622_145PM.M
Last changed    : 2/16/2022 1:13:01 PM by vrusu
  
```



=====
 Area Percent Report
 =====

```

Sorted By           :      Signal
Calib. Data Modified :      2/16/2022 12:49:57 PM
Multiplier:         :      1.0000
Dilution:           :      1.0000
Use Multiplier & Dilution Factor with ISTDs
  
```

Signal 1: DAD1 A, Sig=240,4 Ref=360,5

Peak #	RetTime [min]	Type	Width [min]	Area [mAU*s]	Area %	Name
1	1.872	BB	0.1037	1.09421	0.0133	?
2	2.474	BV	0.0656	10.28238	0.1248	?
3	3.268	VB	0.0935	9.55342e-1	0.0116	?
4	4.831	BB	0.1353	4.29301	0.0521	?
5	5.167	BB	0.0961	1.31518	0.0160	?
6	5.955	BV	0.1164	50.19550	0.6092	?
7	6.394	VB	0.1124	8164.15381	99.0789	7a-Methylthio Spironolactone-D3
8	7.609	BB	0.1444	1.38547	0.0168	?

Sample Name: VR-2-145 spl-2

Peak #	RetTime [min]	Type	Width [min]	Area [mAU*s]	Area %	Name
9	9.995	BB	0.1016	4.38541	0.0532	?
10	12.457	BB	0.0754	1.99353	0.0242	?

Totals : 8240.05386

=====
*** End of Report ***