

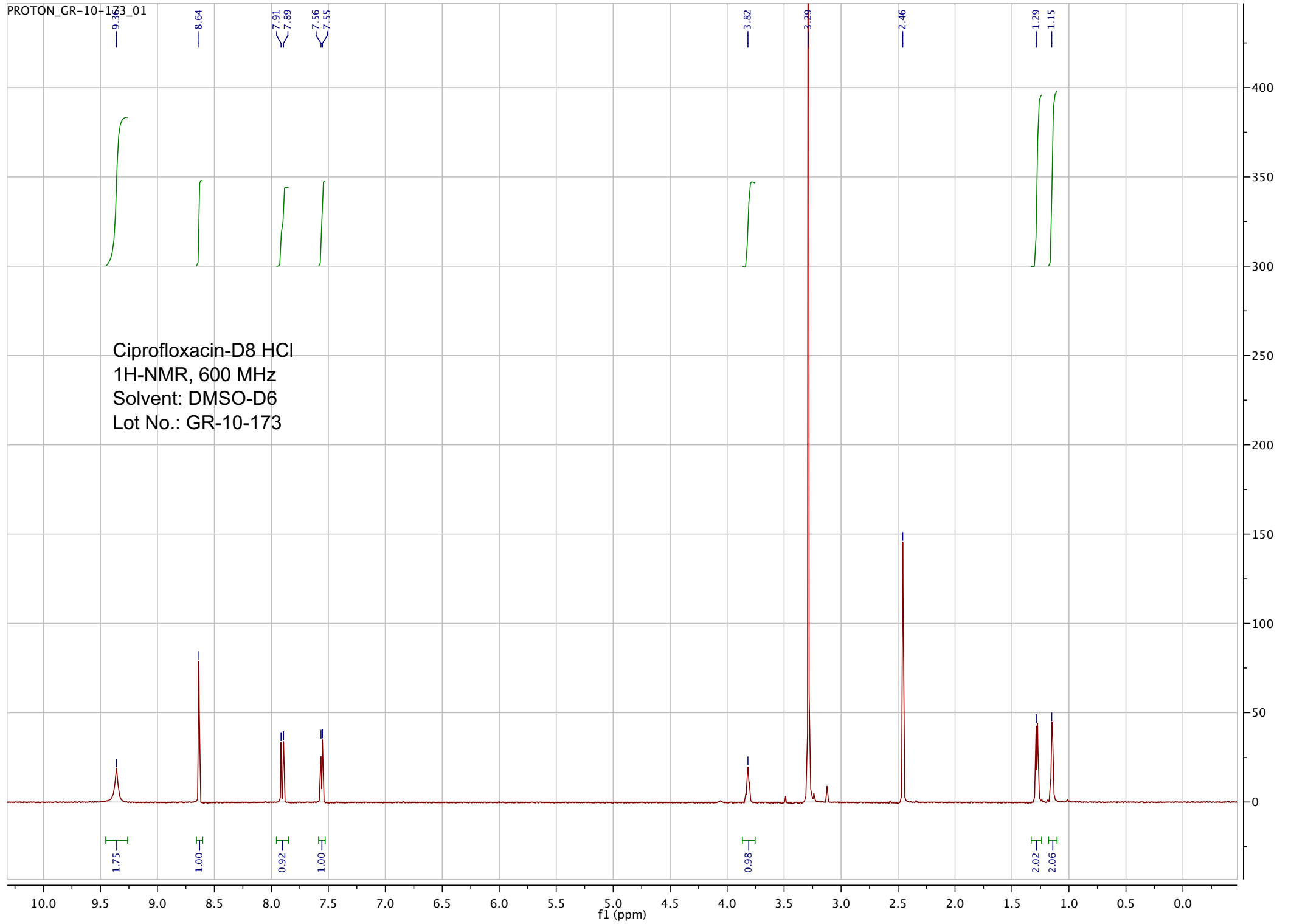
Name:	Ciprofloxacin-D8 Hydrochloride
Lot#:	GR-10-173
Test Date:	04/07/2022 (re-test date: 04/07/2027)
CAS No.:	1216659-54-9
MF:	C ₁₇ H ₁₁ D ₈ ClFN ₃ O ₃
MW:	375.85
Appearance:	Off-White solid
Purity:	99.7% by HPLC (average of two sample preparations); 99% atom D
¹H-NMR:	Conforms
MS-ESI (+)	Conforms (shows peak at m/z = 340.29 [M _(free base) +H] ⁺)
Storage	Store at -18°C in a dry place away from direct sunlight

Approved by:

Date: 04/07/2022



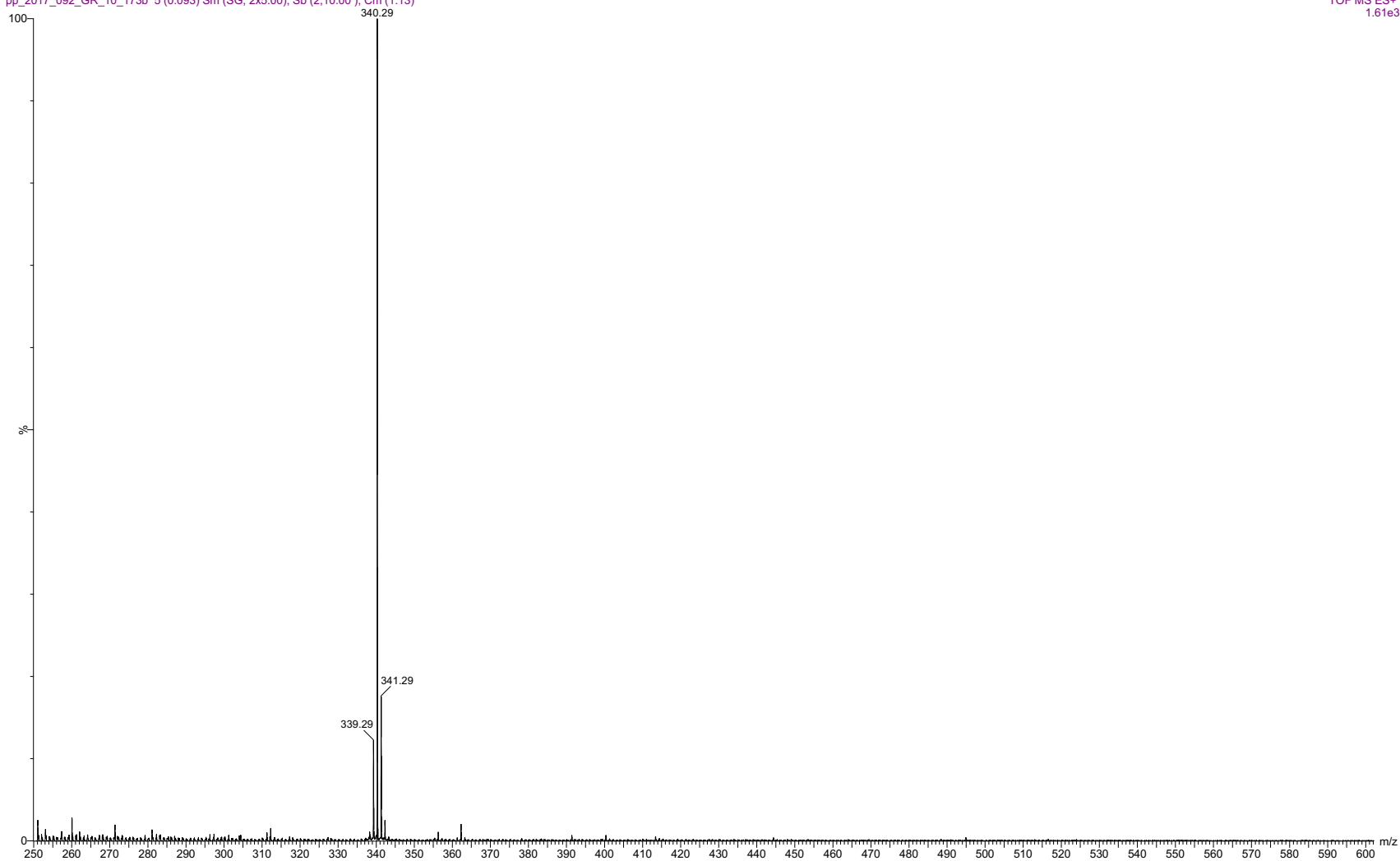
Viorica Rusu, QC/QA Manager



pp_2017_092_GR_10_173b 5 (0.093) Sm (SG, 2x5.00); Sb (2,10.00); Cm (1:13)

7.0000000

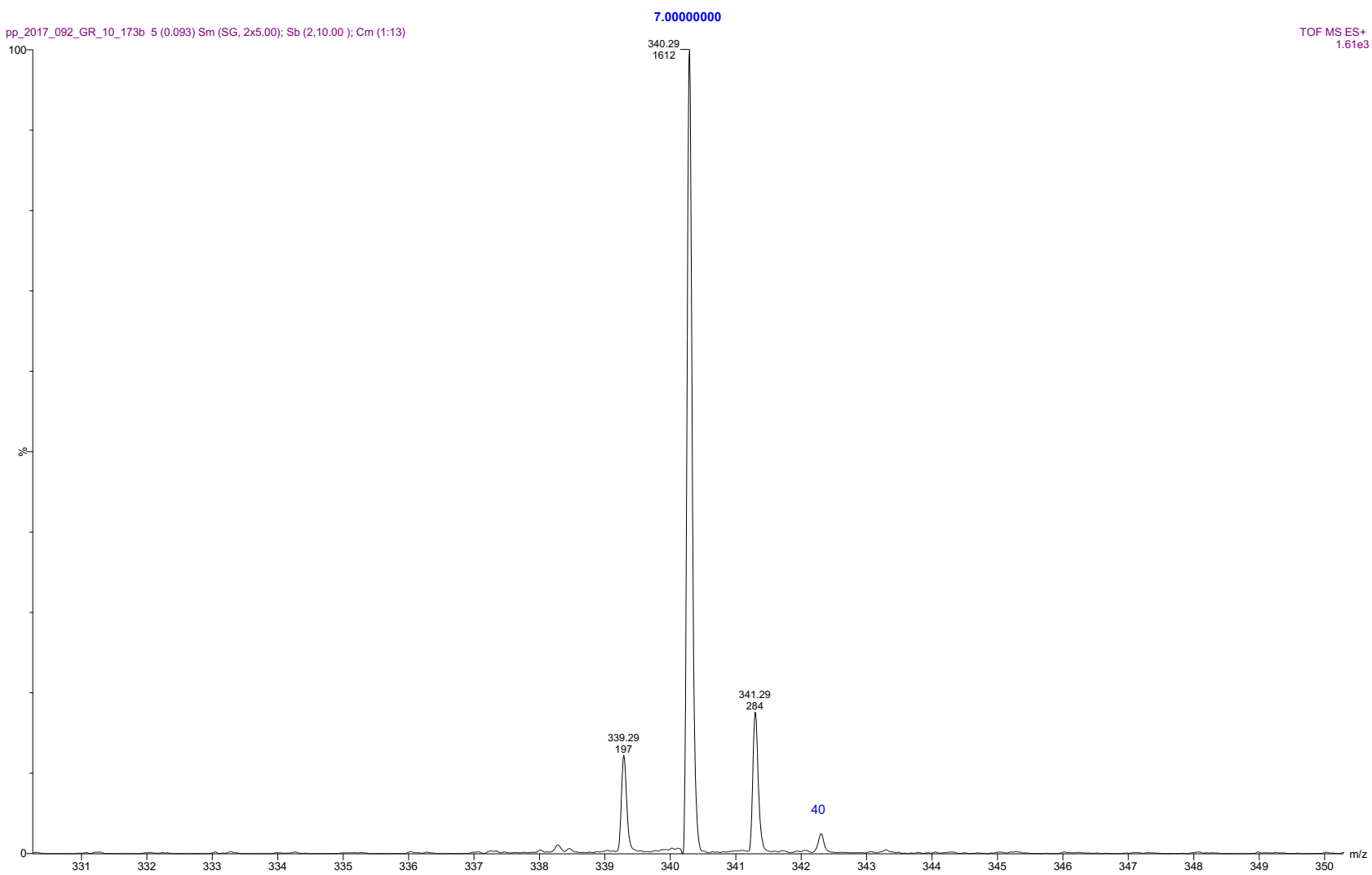
TOF MS ES+
1.61e3



Raw ESI-MS spectrum for sample GR-10-173. Shows monoisotopic [M+H]⁺ mass.

pp_2017_092_GR_10_173b 5 (0.093) Sm (SG, 2x5.00); Sb (2,10.00); Cm (1:13)

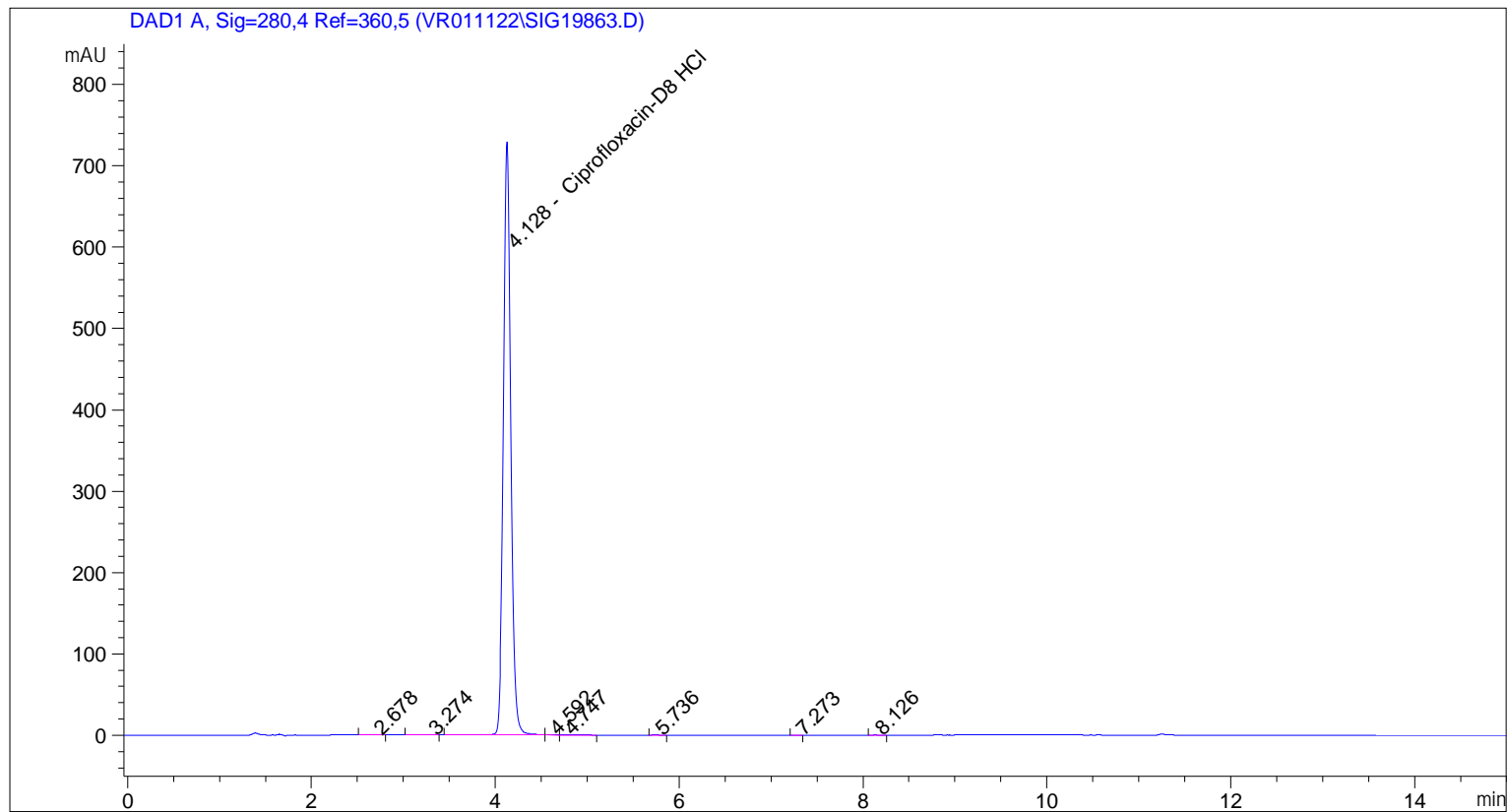
TOF MS ES+
1.61e3



Expansion of above showing intensity labels.

```

=====
Acq. Operator   : vrusu
Acq. Instrument : Instrument 1                Location : Vial 92
Injection Date  : 4/7/2022 12:40:57 PM
                                           Inj Volume : 5.0 µl
Acq. Method     : C:\CHEM32\1\METHODS\VR040722_173.M
Last changed    : 4/7/2022 12:40:03 PM by vrusu
Analysis Method : C:\CHEM32\1\METHODS\VR040722_173PM.M
Last changed    : 4/7/2022 1:34:10 PM by vrusu
  
```



Area Percent Report

```

Sorted By           : Signal
Calib. Data Modified : 4/7/2022 1:33:06 PM
Multiplier          : 1.0000
Dilution            : 1.0000
Use Multiplier & Dilution Factor with ISTDs
  
```

Signal 1: DAD1 A, Sig=280,4 Ref=360,5

Peak #	RetTime [min]	Type	Width [min]	Area [mAU*s]	Area %	Name
1	2.678	BB	0.0996	1.46322	0.0362	?
2	3.274	BB	0.1240	1.44634	0.0357	?
3	4.128	BV	0.0844	4032.95239	99.6836	Ciprofloxacin-D8 HCl
4	4.592	VV	0.0914	4.35323	0.1076	?
5	4.747	VB	0.1181	2.76553	0.0684	?
6	5.736	BB	0.0588	1.89972	0.0470	?
7	7.273	BB	0.0621	3.70216e-1	9.151e-3	?
8	8.126	BB	0.0737	5.02610e-1	0.0124	?

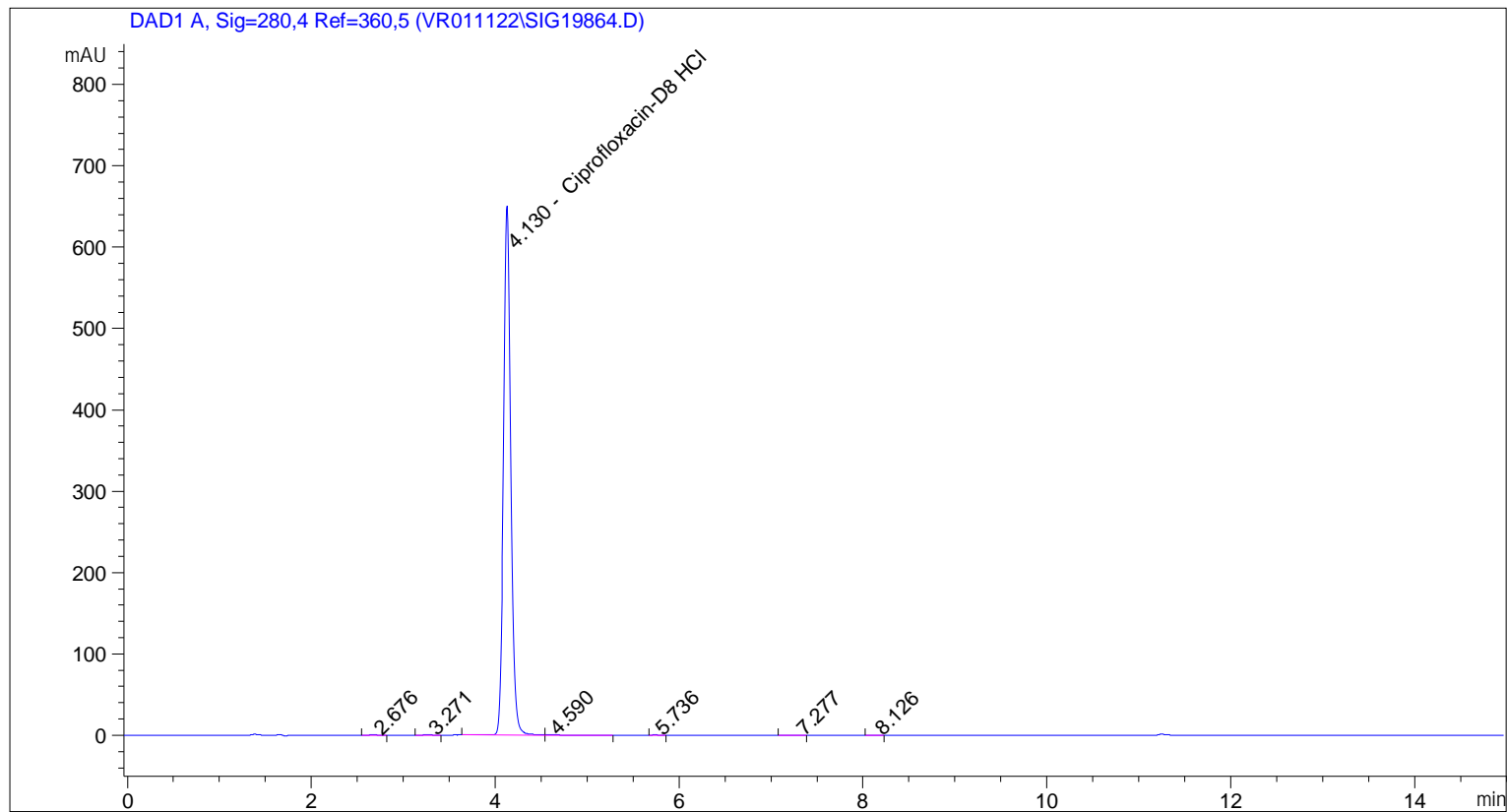
Sample Name: GR-10-173

Peak #	RetTime [min]	Type	Width [min]	Area [mAU*s]	Area %	Name
Totals :				4045.75326		

=====
*** End of Report ***

```

=====
Acq. Operator   : vrusu
Acq. Instrument : Instrument 1                Location : Vial 93
Injection Date  : 4/7/2022 1:02:49 PM
                                           Inj Volume : 5.0 µl
Acq. Method     : C:\CHEM32\1\METHODS\VR040722_173.M
Last changed    : 4/7/2022 1:01:55 PM by vrusu
Analysis Method  : C:\CHEM32\1\METHODS\VR040722_173PM.M
Last changed    : 4/7/2022 1:34:10 PM by vrusu
  
```



=====
 Area Percent Report
 =====

```

Sorted By       : Signal
Calib. Data Modified : 4/7/2022 1:33:06 PM
Multiplier:     : 1.0000
Dilution:       : 1.0000
Use Multiplier & Dilution Factor with ISTDs
  
```

Signal 1: DAD1 A, Sig=280,4 Ref=360,5

Peak #	RetTime [min]	Type	Width [min]	Area [mAU*s]	Area %	Name
1	2.676	BB	0.0994	1.33553	0.0373	?
2	3.271	BB	0.1051	1.00470	0.0281	?
3	4.130	BV	0.0838	3565.43188	99.6915	Ciprofloxacin-D8 HCl
4	4.590	VB	0.1291	5.79271	0.1620	?
5	5.736	BB	0.0593	1.80302	0.0504	?
6	7.277	BB	0.1060	6.99091e-1	0.0195	?
7	8.126	BB	0.0599	3.99828e-1	0.0112	?

Sample Name: GR-10-173 spl-2

Totals : 3576.46675

=====

*** End of Report ***