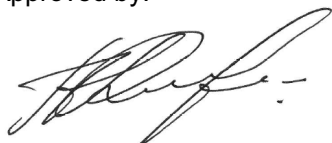


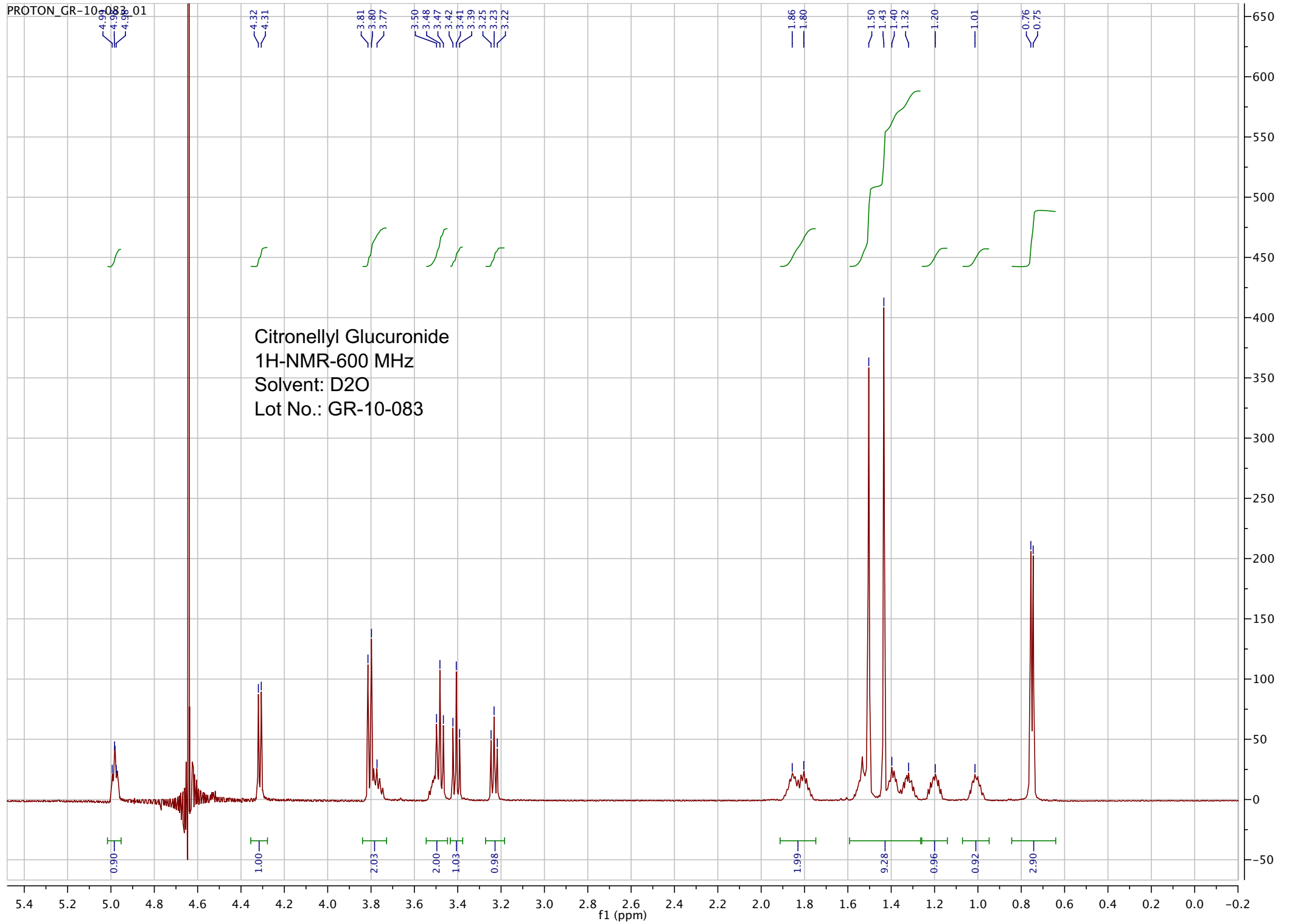
Name:	Citronellyl Glucuronide (Citronellyl β -D-glucopyranosiduronic acid)
Lot#:	GR-10-083
Test Date:	03/25/2022 (re-test date: 03/25/2027)
CAS No.:	NA
MF:	C ₁₆ H ₂₈ O ₇
MW:	332.39
Appearance:	Pink solid
Purity:	95.6% by HPLC (average of two sample preparations)
¹H-NMR:	Conforms
MS-ESI (-)	Conforms (shows peak at m/z = 331.23 [M-H] ⁻)
Storage	Store at -18°C in a dry place away from direct sunlight

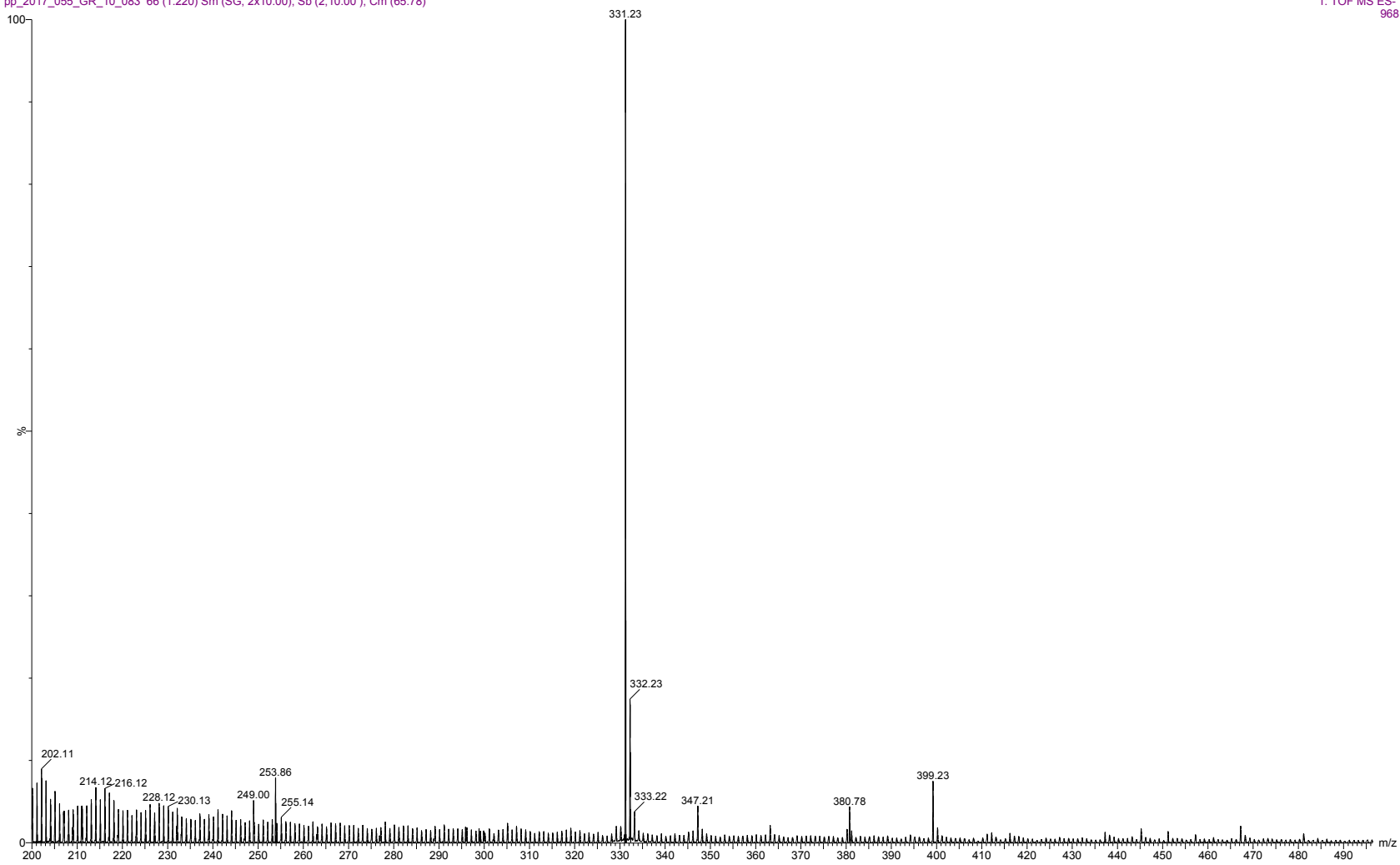
Approved by:

Date: 03/25/2022



Viorica Rusu, QC/QA Manager

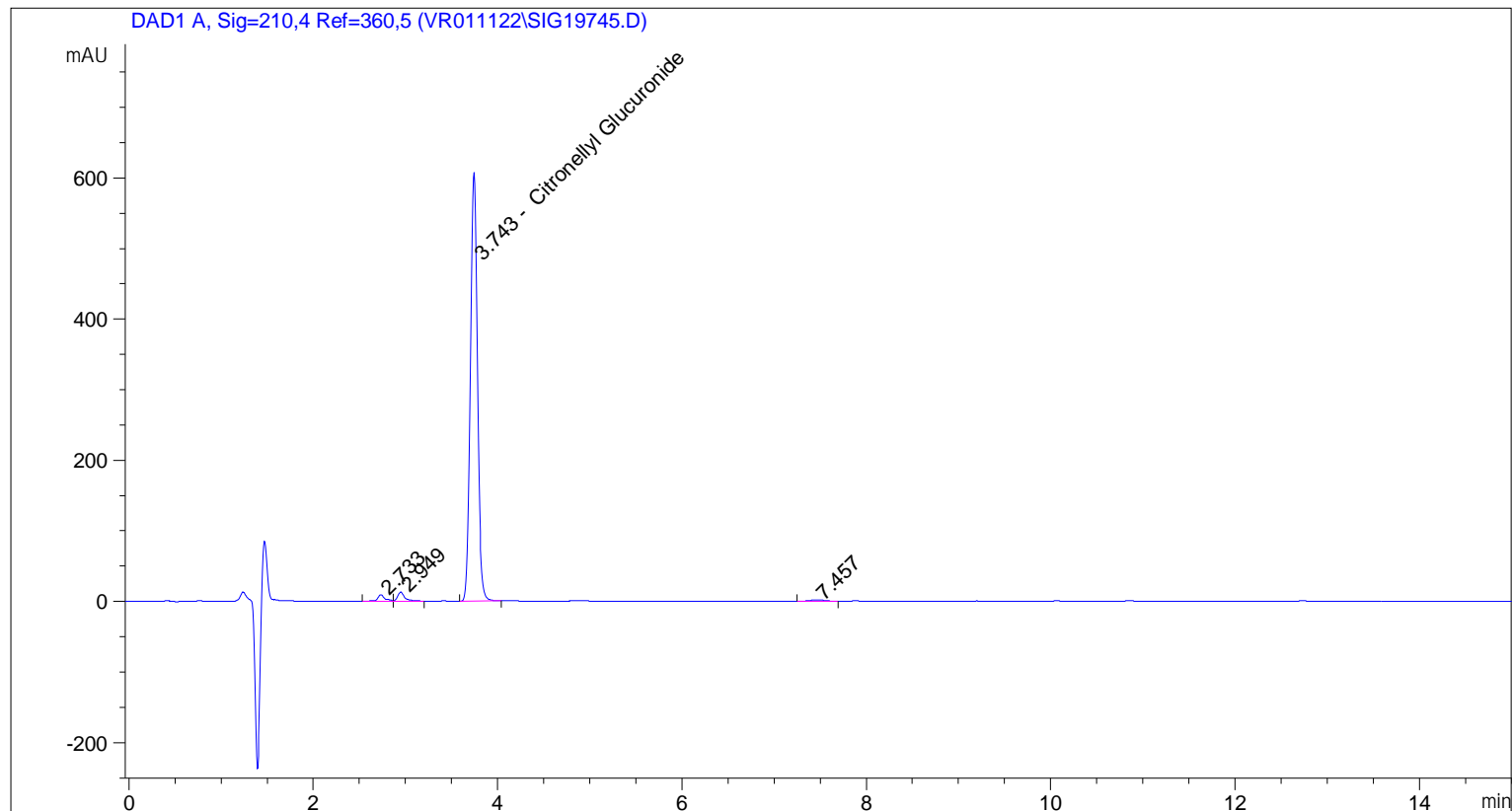




ESI-MS spectrum for sample GR-10-083. Shows monoisotopic [M-H]- mass.

```

=====
Acq. Operator   : vrusu
Acq. Instrument : Instrument 1                Location : Vial 17
Injection Date  : 3/25/2022 2:31:23 PM
                                           Inj Volume : 15.0 µl
Acq. Method     : C:\CHEM32\1\METHODS\VR032522_083.M
Last changed    : 3/25/2022 2:30:07 PM by vrusu
Analysis Method : C:\CHEM32\1\METHODS\VR032522_083PM.M
Last changed    : 3/25/2022 3:04:40 PM by vrusu
  
```



Area Percent Report

```

=====
Sorted By       : Signal
Calib. Data Modified : 3/25/2022 3:04:22 PM
Multiplier:     : 1.0000
Dilution:      : 1.0000
Use Multiplier & Dilution Factor with ISTDs
  
```

Signal 1: DAD1 A, Sig=210,4 Ref=360,5

Peak #	RetTime [min]	Type	Width [min]	Area [mAU*s]	Area %	Name
1	2.733	BV	0.0779	48.92476	1.4649	?
2	2.949	VB	0.0747	64.86214	1.9421	?
3	3.743	BB	0.0814	3200.96338	95.8431	Citronellyl Glucuronide
4	7.457	BB	0.1768	25.04535	0.7499	?

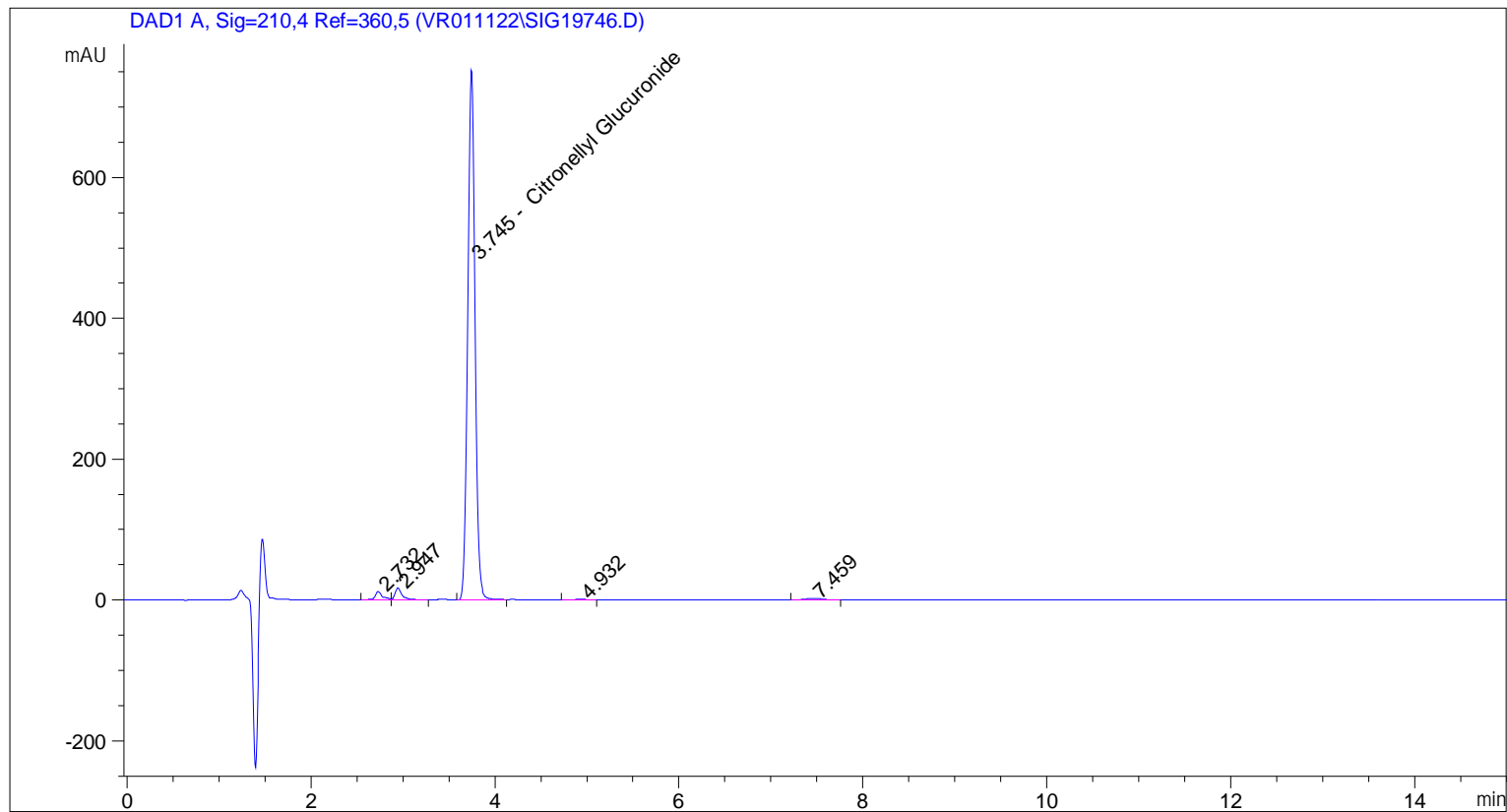
Totals : 3339.79563

=====

*** End of Report ***

```

=====
Acq. Operator   : vrusu
Acq. Instrument : Instrument 1                Location : Vial 18
Injection Date  : 3/25/2022 2:49:59 PM
                                           Inj Volume : 15.0 µl
Acq. Method    : C:\CHEM32\1\METHODS\VR032522_083.M
Last changed   : 3/25/2022 2:48:47 PM by vrusu
Analysis Method : C:\CHEM32\1\METHODS\VR032522_083PM.M
Last changed   : 3/25/2022 3:04:40 PM by vrusu
  
```



=====
 Area Percent Report
 =====

```

Sorted By           :      Signal
Calib. Data Modified :      3/25/2022 3:04:22 PM
Multiplier:         :      1.0000
Dilution:           :      1.0000
Use Multiplier & Dilution Factor with ISTDs
  
```

Signal 1: DAD1 A, Sig=210,4 Ref=360,5

Peak #	RetTime [min]	Type	Width [min]	Area [mAU*s]	Area %	Name
1	2.732	BV	0.0806	67.19349	1.5921	?
2	2.947	VB	0.0775	89.18478	2.1132	?
3	3.745	BB	0.0824	4030.05469	95.4896	Citronellyl Glucuronide
4	4.932	BB	0.1120	8.90248	0.2109	?
5	7.459	BB	0.1753	25.07744	0.5942	?

Totals : 4220.41287

=====

*** End of Report ***