

<b>Name:</b>	<b><i>rac</i>-Clopidogrel-D3 Bisulfate</b>
<b>Lot#:</b>	GR-10-263
<b>Test Date:</b>	04/08/2022 (re-test date: 04/08/2027)
<b>CAS No.:</b>	120202-66-6
<b>MF:</b>	$\text{C}_{16}\text{H}_{15}\text{D}_3\text{ClNO}_6\text{S}_2$
<b>MW:</b>	422.92
<b>Appearance:</b>	Off-White solid
<b>Purity:</b>	99.9% by HPLC; 99% atom D
<b><math>^1\text{H-NMR}</math>:</b>	Conforms (shows 1.4% acetone)
<b>MS-ESI (+)</b>	Conforms (shows peak at $m/z = 325.09, 327.09$ [ $M_{(\text{free base})} + \text{H}$ ] $^+$ , shows the expected isotope pattern for mono-chloro compound)
<b>Storage</b>	Store at $-18^\circ\text{C}$ in a dry place away from direct sunlight

Approved by:

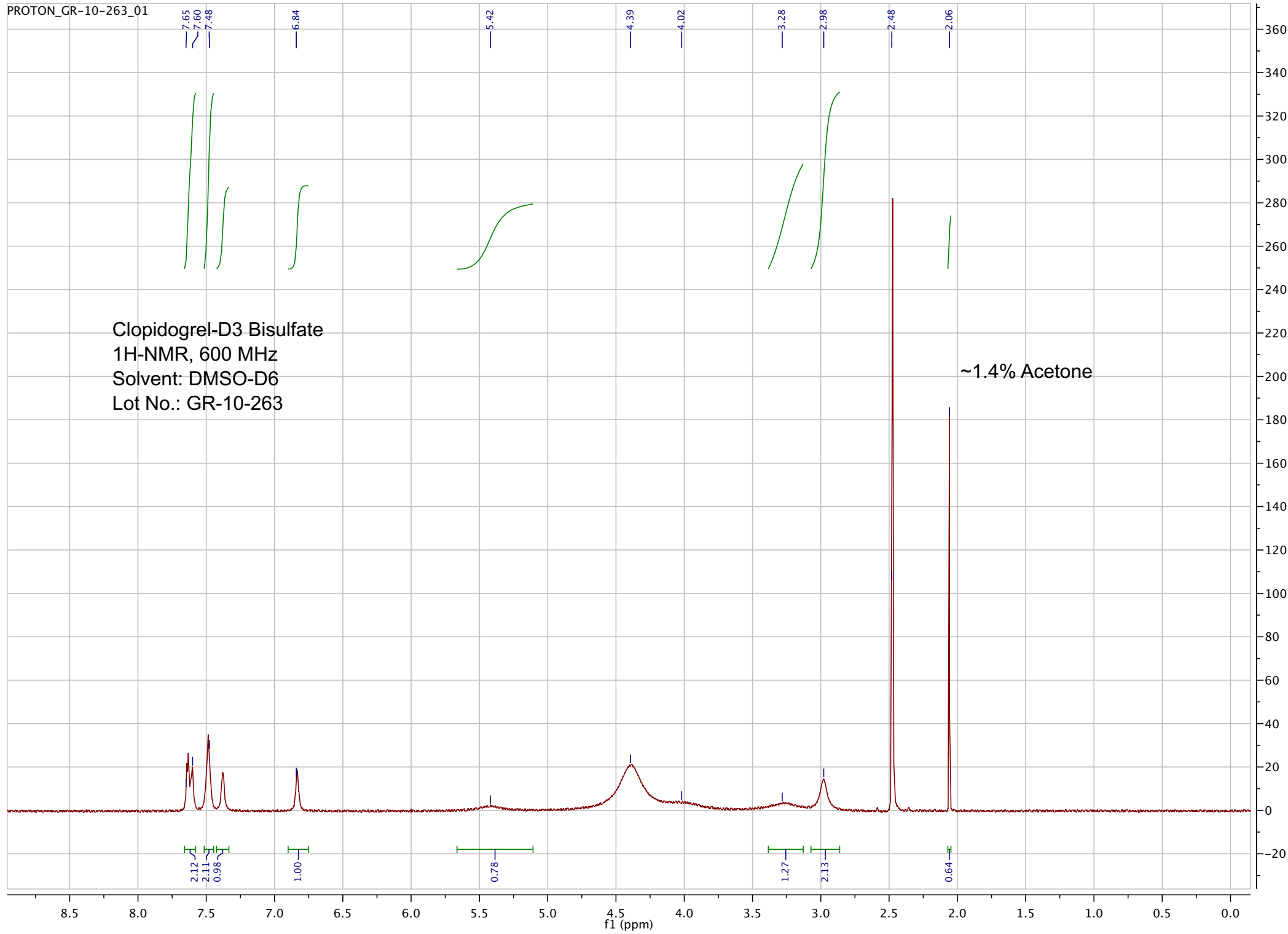
Date: 04/08/2022

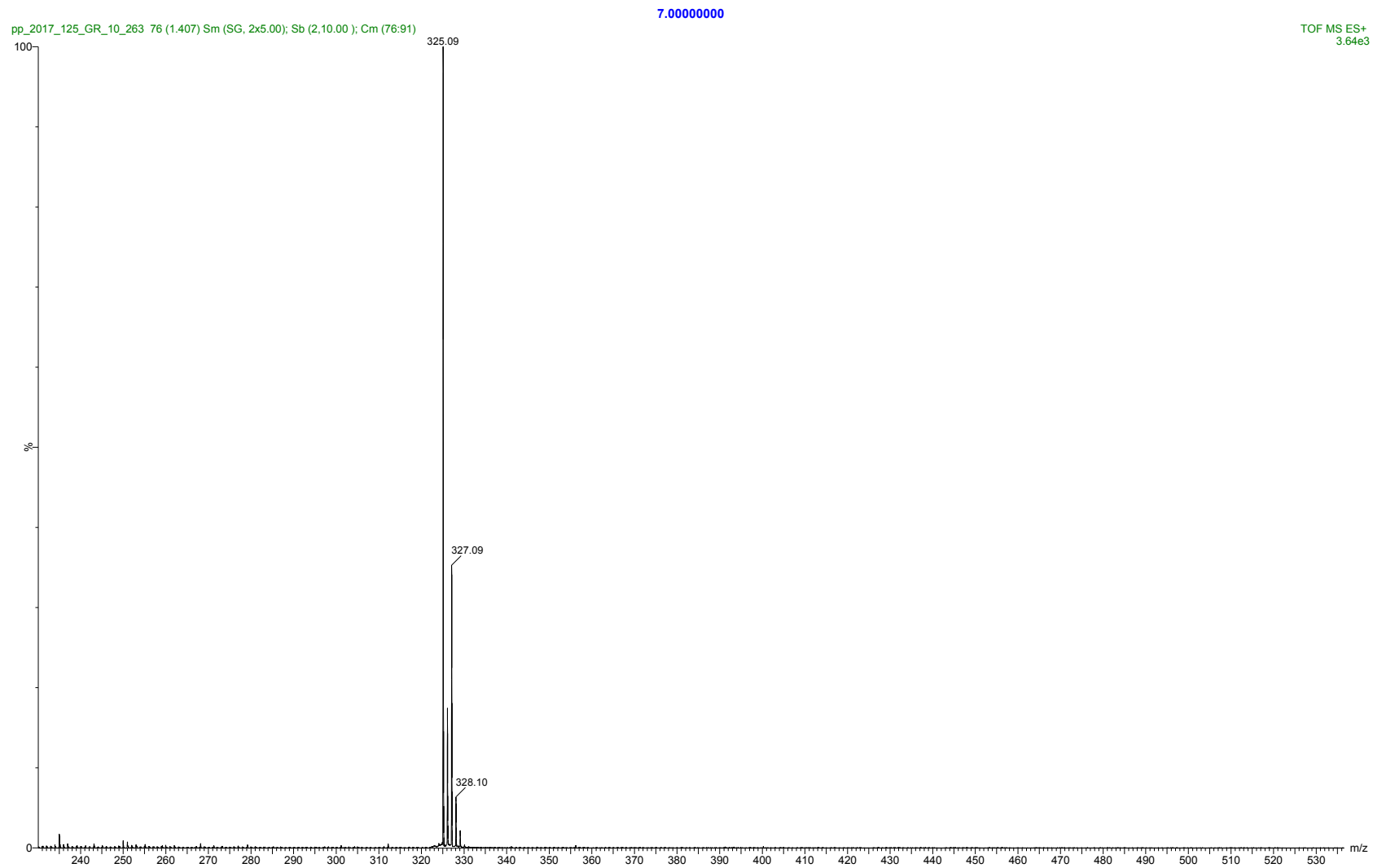


Viorica Rusu, QC/QA Manager

Clopidogrel-D3 Bisulfate  
1H-NMR, 600 MHz  
Solvent: DMSO-D6  
Lot No.: GR-10-263

~1.4% Acetone



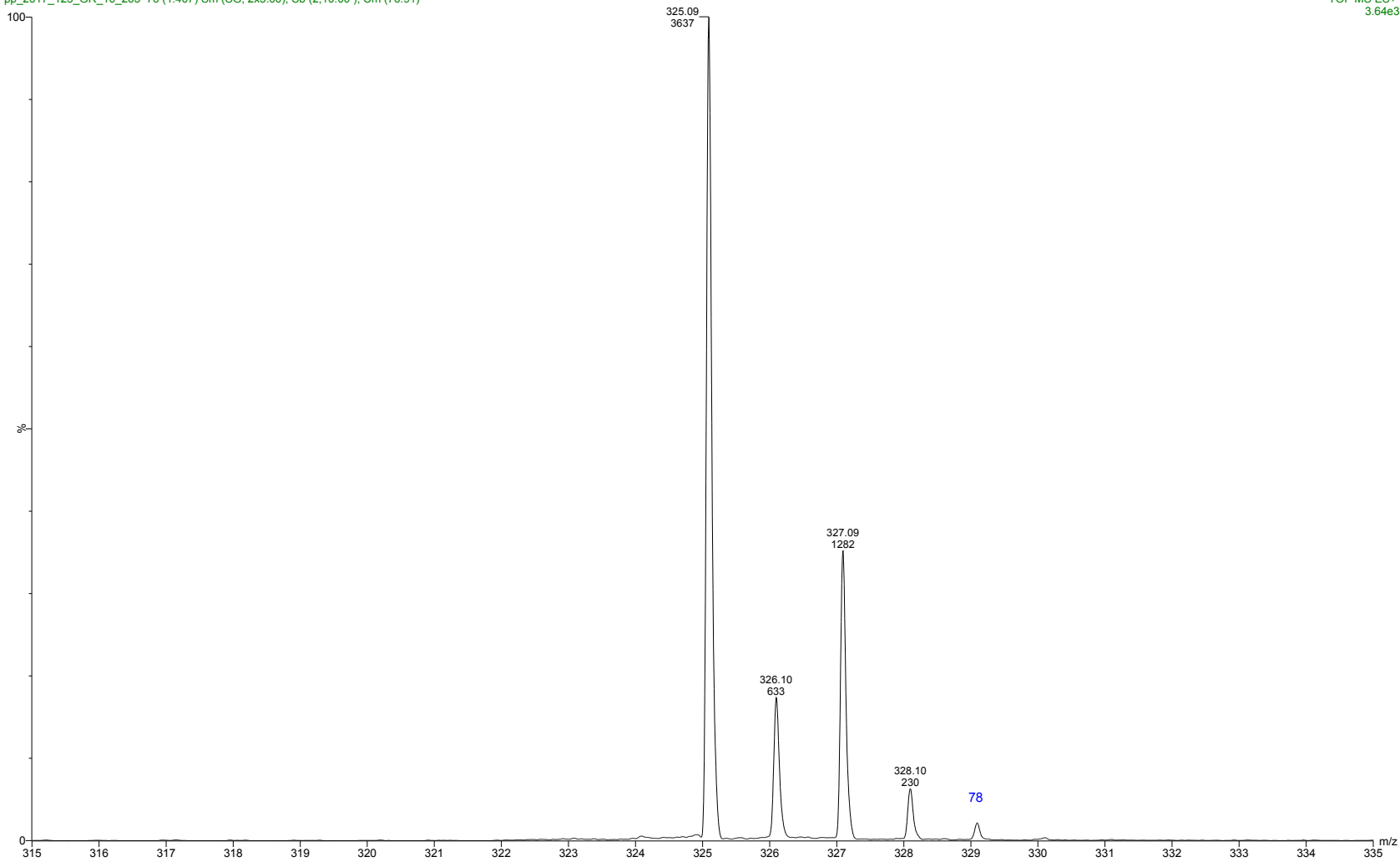


ESI-MS spectrum for sample GR-10-263. Shows monoisotopic  $[M+H]^+$  mass.

pp\_2017\_125\_GR\_10\_263 76 (1.407) Sm (SG, 2x5.00); Sb (2,10.00 ); Cm (76.91)

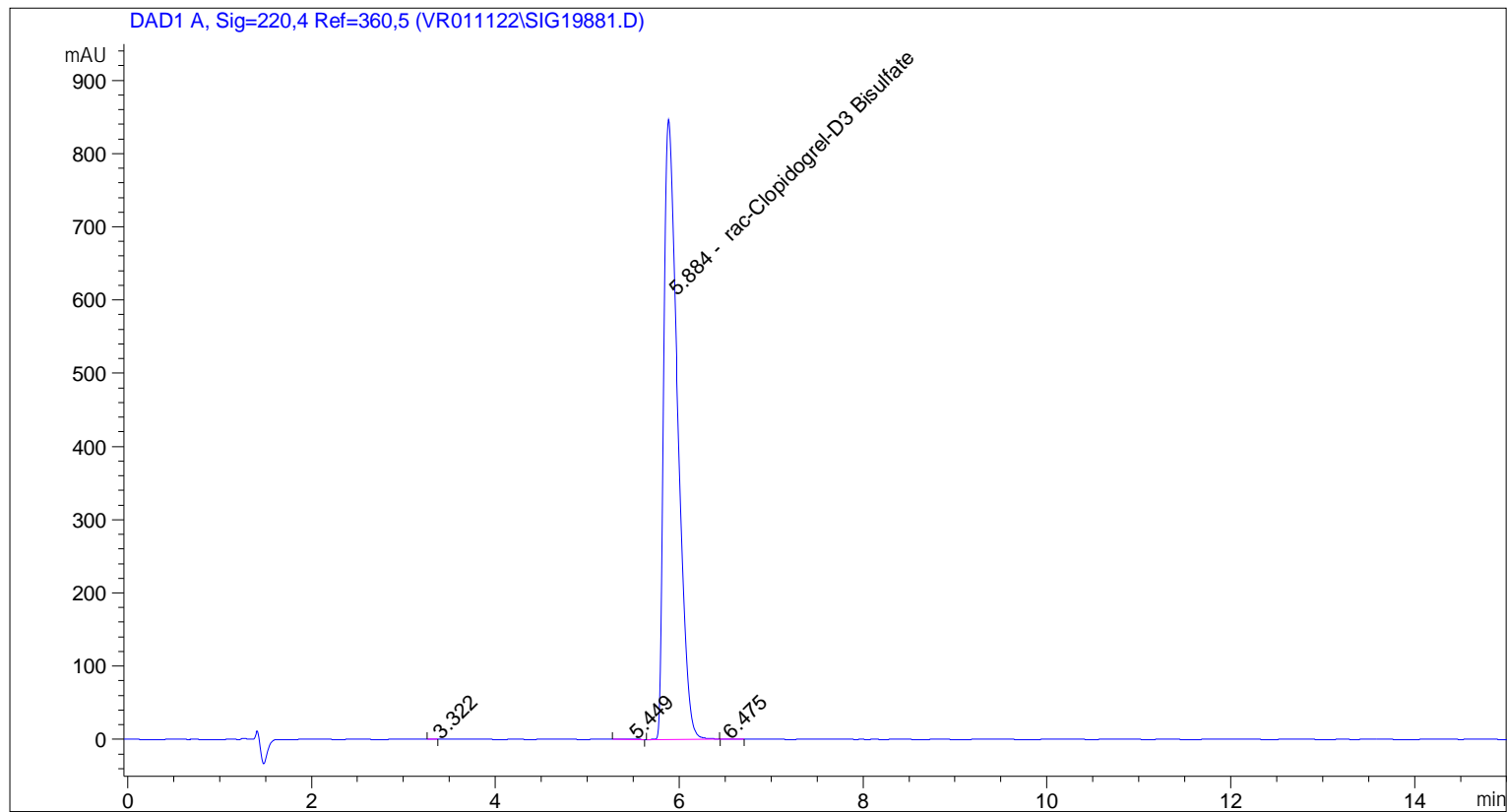
7.00000000

TOF MS ES+  
3.64e3



Expansion of above showing intensity labels.

=====  
Acq. Operator : vrusu  
Acq. Instrument : Instrument 1 Location : Vial 99  
Injection Date : 4/8/2022 1:27:29 PM Inj Volume : 10.0 µl  
Acq. Method : C:\CHEM32\1\METHODS\VR040822\_163.M  
Last changed : 4/8/2022 1:26:24 PM by vrusu  
Analysis Method : C:\CHEM32\1\METHODS\VR041122\_263PM.M  
Last changed : 4/11/2022 8:43:16 AM by vrusu



=====  
Area Percent Report  
=====

Sorted By : Signal  
Calib. Data Modified : 4/11/2022 8:40:03 AM  
Multiplier: : 1.0000  
Dilution: : 1.0000  
Use Multiplier & Dilution Factor with ISTDs

Signal 1: DAD1 A, Sig=220,4 Ref=360,5

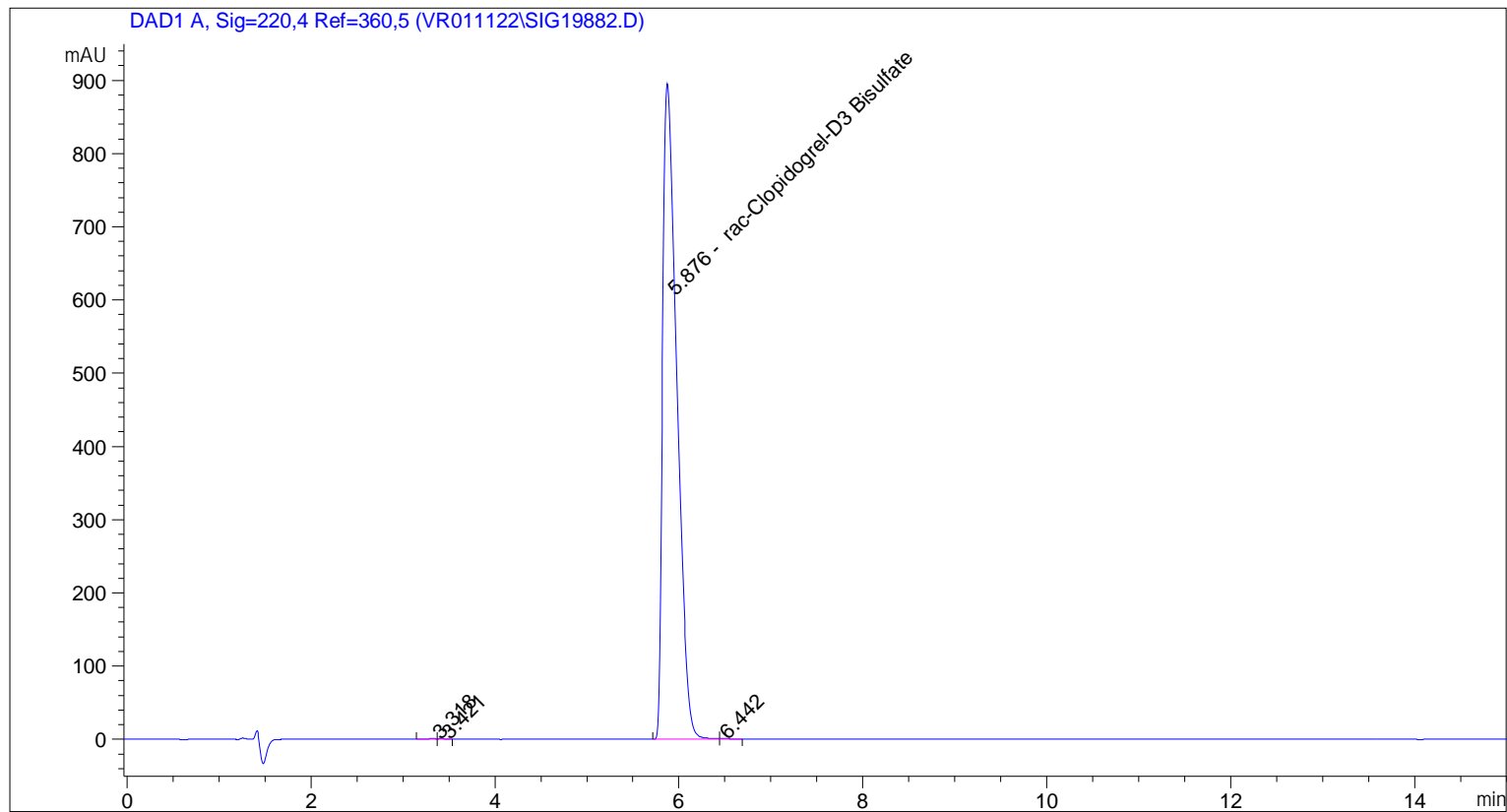
Peak #	RetTime [min]	Type	Width [min]	Area [mAU*s]	Area %	Name
1	3.322	BB	0.0579	1.18201	0.0133	?
2	5.449	BB	0.1304	4.06570	0.0458	?
3	5.884	BF	0.1603	8869.32715	99.8717	rac-Clopidogrel-D3 Bisulfate
4	6.475	VB	0.1202	6.14670	0.0692	?

Totals : 8880.72156

=====

\*\*\* End of Report \*\*\*

=====  
Acq. Operator : vrusu  
Acq. Instrument : Instrument 1 Location : Vial 100  
Injection Date : 4/8/2022 1:45:29 PM Inj Volume : 10.0 µl  
Acq. Method : C:\CHEM32\1\METHODS\VR040822\_163.M  
Last changed : 4/8/2022 1:44:28 PM by vrusu  
Analysis Method : C:\CHEM32\1\METHODS\VR041122\_263PM.M  
Last changed : 4/11/2022 8:43:16 AM by vrusu



=====  
Area Percent Report  
=====

Sorted By : Signal  
Calib. Data Modified : 4/11/2022 8:40:03 AM  
Multiplier: : 1.0000  
Dilution: : 1.0000  
Use Multiplier & Dilution Factor with ISTDs

Signal 1: DAD1 A, Sig=220,4 Ref=360,5

Peak #	RetTime [min]	Type	Width [min]	Area [mAU*s]	Area %	Name
1	3.318	BV	0.1002	5.50114	0.0572	?
2	3.421	VB	0.0779	3.70721	0.0385	?
3	5.876	BF	0.1632	9602.16211	99.8398	rac-Clopidogrel-D3 Bisulfate
4	6.442	VB	0.1301	6.20358	0.0645	?

Totals : 9617.57404

=====

\*\*\* End of Report \*\*\*