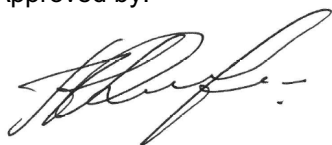


Name:	Ethynyl Estradiol Dimer 1
Lot#:	GR-9-285-1
Test Date:	02/04/2021 (re-test date: 02/04/2026)
CAS No.:	303014-90-6
MF:	C ₄₀ H ₄₆ O ₄
MW:	590.80
Appearance:	White solid
Purity:	94.6% by HPLC (average of two sample preparations)
¹H-NMR:	Conforms
MS-ESI (-)	Conforms (shows peak at m/z = 589.54 [M-H] ⁻)
Storage	Store at 0-5°C in a dry place away from direct sunlight

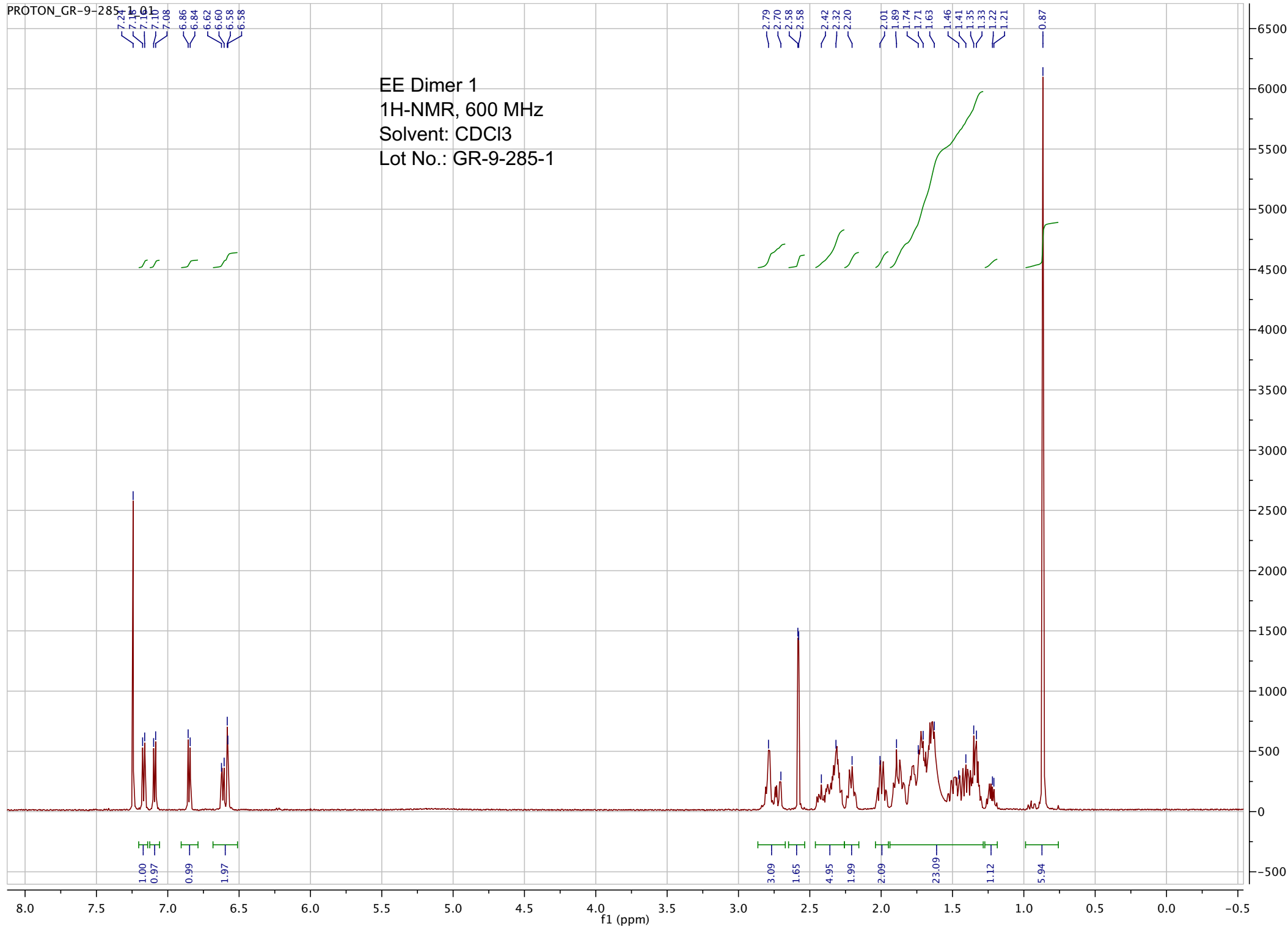
Approved by:

Date: 02/04/2021



Viorica Rusu, QC/QA Manager

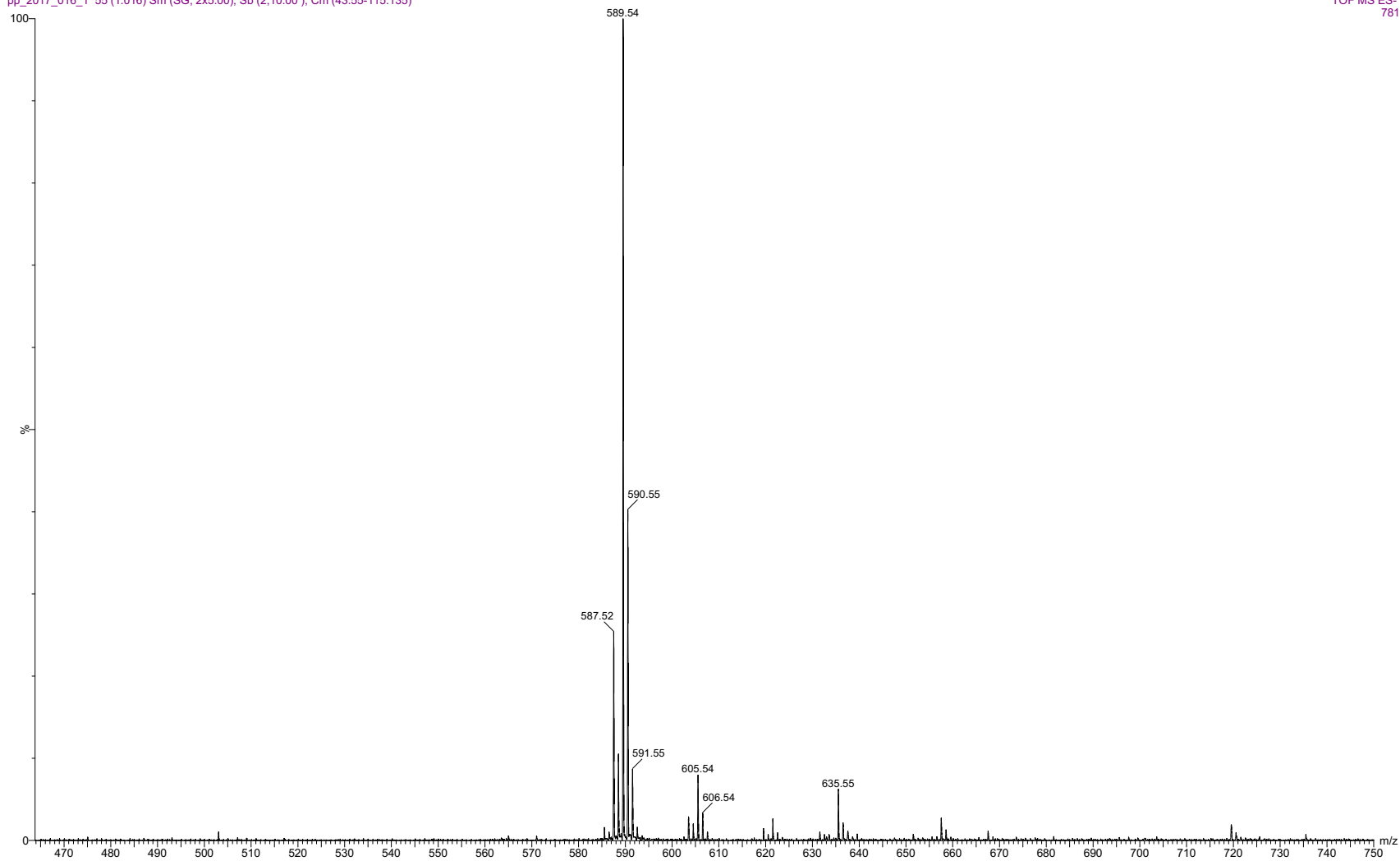
EE Dimer 1
1H-NMR, 600 MHz
Solvent: CDCl3
Lot No.: GR-9-285-1



pp_2017_016_1 55 (1.016) Sm (SG, 2x5.00); Sb (2,10.00); Cm (43:55-115:135)

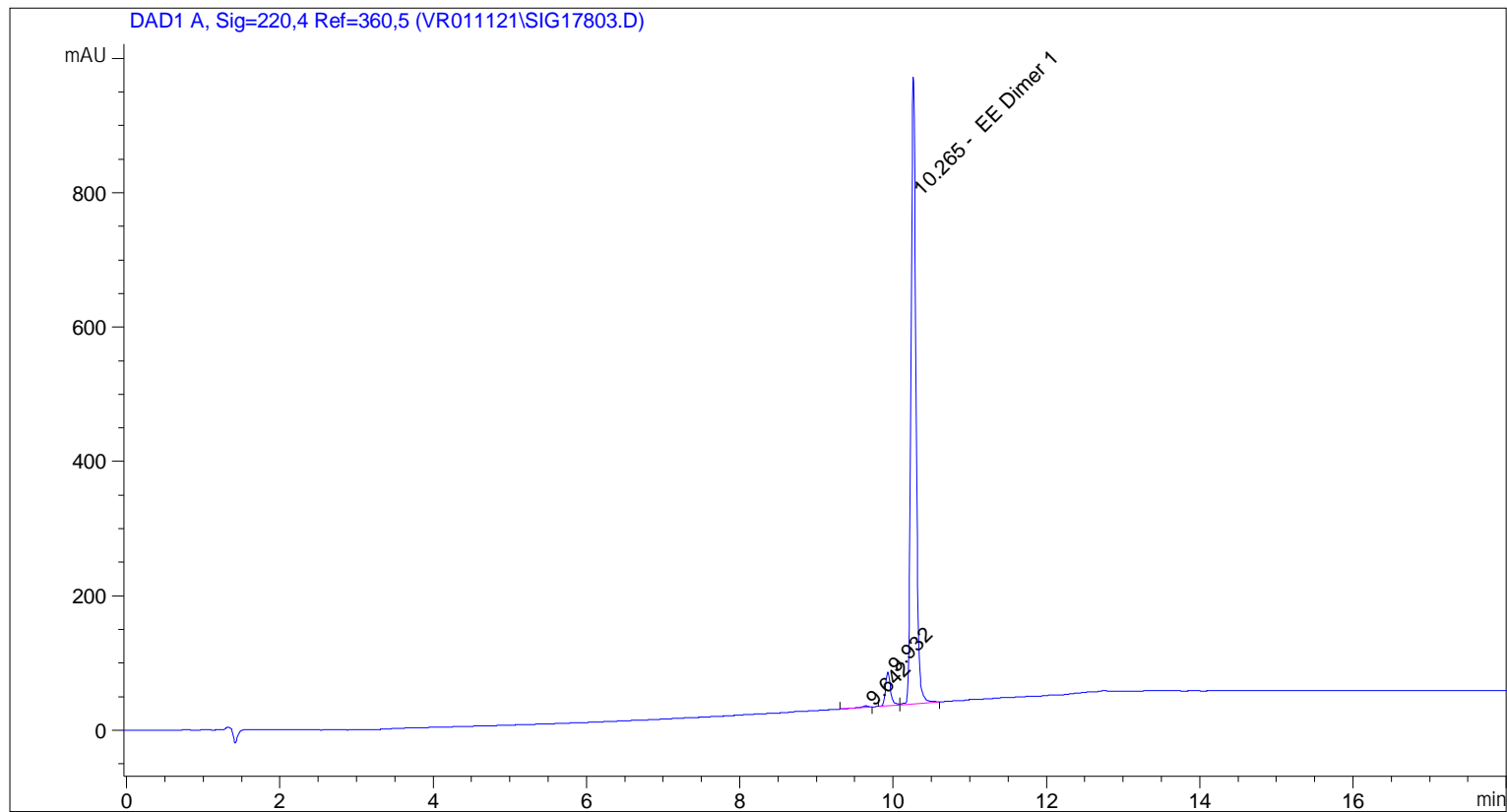
7.0000000

TOF MS ES-
781



ESI-MS spectrum for sample GR-9-285-1. Shows monoisotopic [M-H]- mass.

=====
Acq. Operator : vrusu
Acq. Instrument : Instrument 1 Location : Vial 28
Injection Date : 2/4/2021 8:45:45 AM Inj Volume : 4.0 µl
Acq. Method : C:\CHEM32\1\METHODS\VR020421_285-1.M
Last changed : 2/4/2021 8:44:43 AM by vrusu
Analysis Method : C:\CHEM32\1\METHODS\VR020421_285PM.M
Last changed : 2/4/2021 12:47:33 PM by vrusu



=====
Area Percent Report
=====

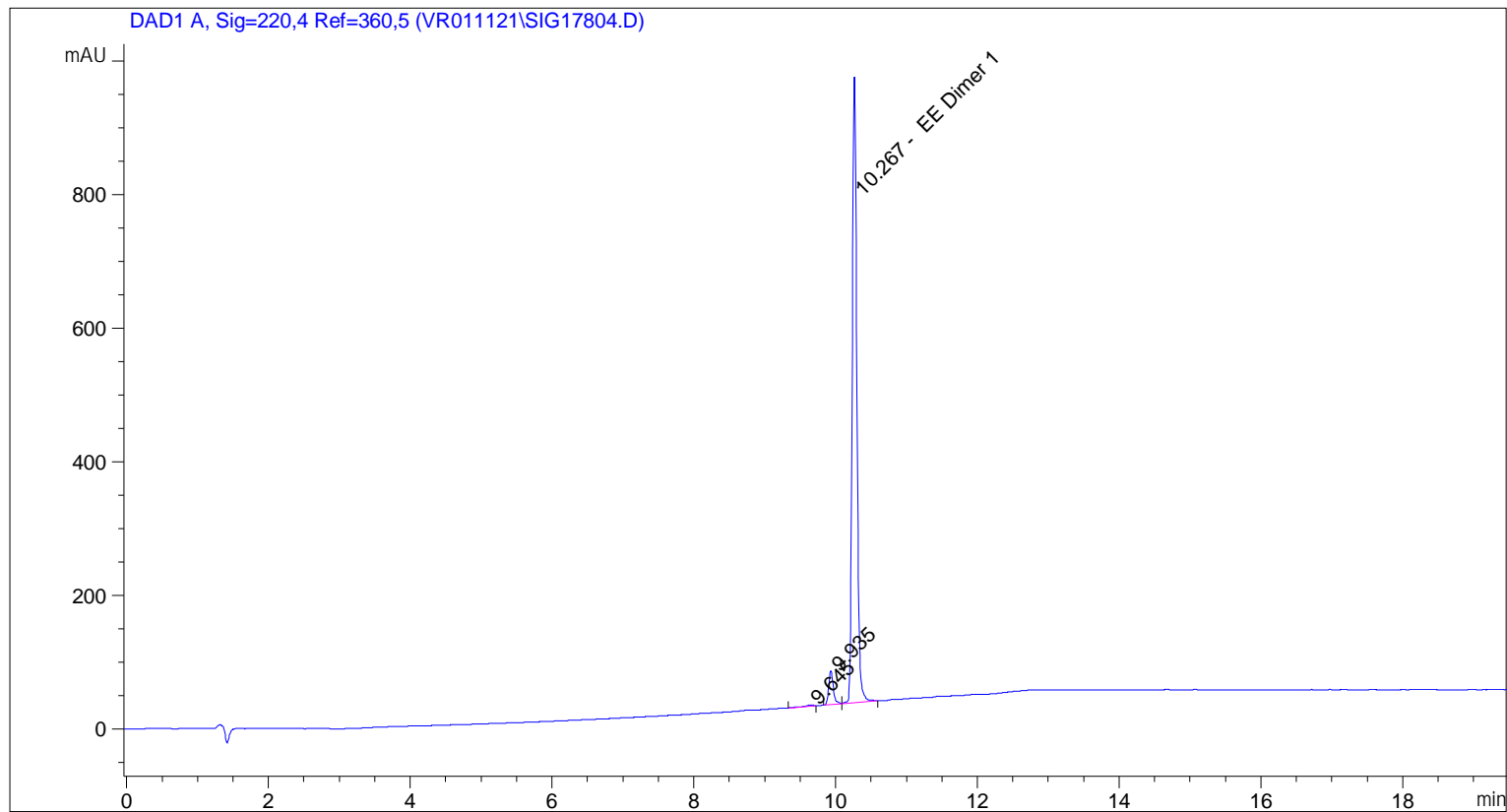
Sorted By : Signal
Calib. Data Modified : 2/4/2021 12:47:25 PM
Multiplier: : 1.0000
Dilution: : 1.0000
Use Multiplier & Dilution Factor with ISTDs

Signal 1: DAD1 A, Sig=220,4 Ref=360,5

Peak #	RetTime [min]	Type	Width [min]	Area [mAU*s]	Area %	Name
1	9.642	BB	0.0834	11.40708	0.2558	?
2	9.932	BV	0.0693	229.62442	5.1485	?
3	10.265	VB	0.0686	4219.01563	94.5958	EE Dimer 1

Totals : 4460.04713

=====
Acq. Operator : vrusu
Acq. Instrument : Instrument 1 Location : Vial 29
Injection Date : 2/4/2021 9:08:32 AM Inj Volume : 4.0 µl
Acq. Method : C:\CHEM32\1\METHODS\VR020421_285-1.M
Last changed : 2/4/2021 9:07:27 AM by vrusu
Analysis Method : C:\CHEM32\1\METHODS\VR020421_285PM.M
Last changed : 2/4/2021 12:47:33 PM by vrusu



=====
Area Percent Report
=====

Sorted By : Signal
Calib. Data Modified : 2/4/2021 12:47:25 PM
Multiplier: : 1.0000
Dilution: : 1.0000
Use Multiplier & Dilution Factor with ISTDs

Signal 1: DAD1 A, Sig=220,4 Ref=360,5

Peak #	RetTime [min]	Type	Width [min]	Area [mAU*s]	Area %	Name
1	9.645	BB	0.0858	11.67831	0.2592	?
2	9.935	BV	0.0692	230.14513	5.1086	?
3	10.267	VB	0.0688	4263.21924	94.6322	EE Dimer 1

Totals : 4505.04268