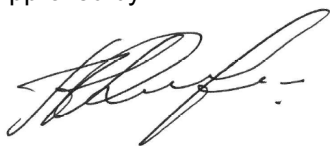


<b>Name:</b>	Fingolimod Phosphate
<b>Lot#:</b>	GR-12-181
<b>Test Date:</b>	01/15/2024 (re-test date: 01/15/2029)
<b>CAS No.:</b>	402615-91-2
<b>MF:</b>	C <sub>19</sub> H <sub>34</sub> NO <sub>5</sub> P
<b>MW:</b>	387.45
<b>Appearance:</b>	Off-White Solid
<b>Purity:</b>	99.3% by HPLC (average of two sample preparations)
<b><sup>1</sup>H-NMR:</b>	Conforms
<b>MS-ESI (-)</b>	Conforms (shows peak at m/z = 386.21 [M-H] <sup>-</sup> )
<b>Storage</b>	Store at 0-5°C in a dry place away from direct sunlight

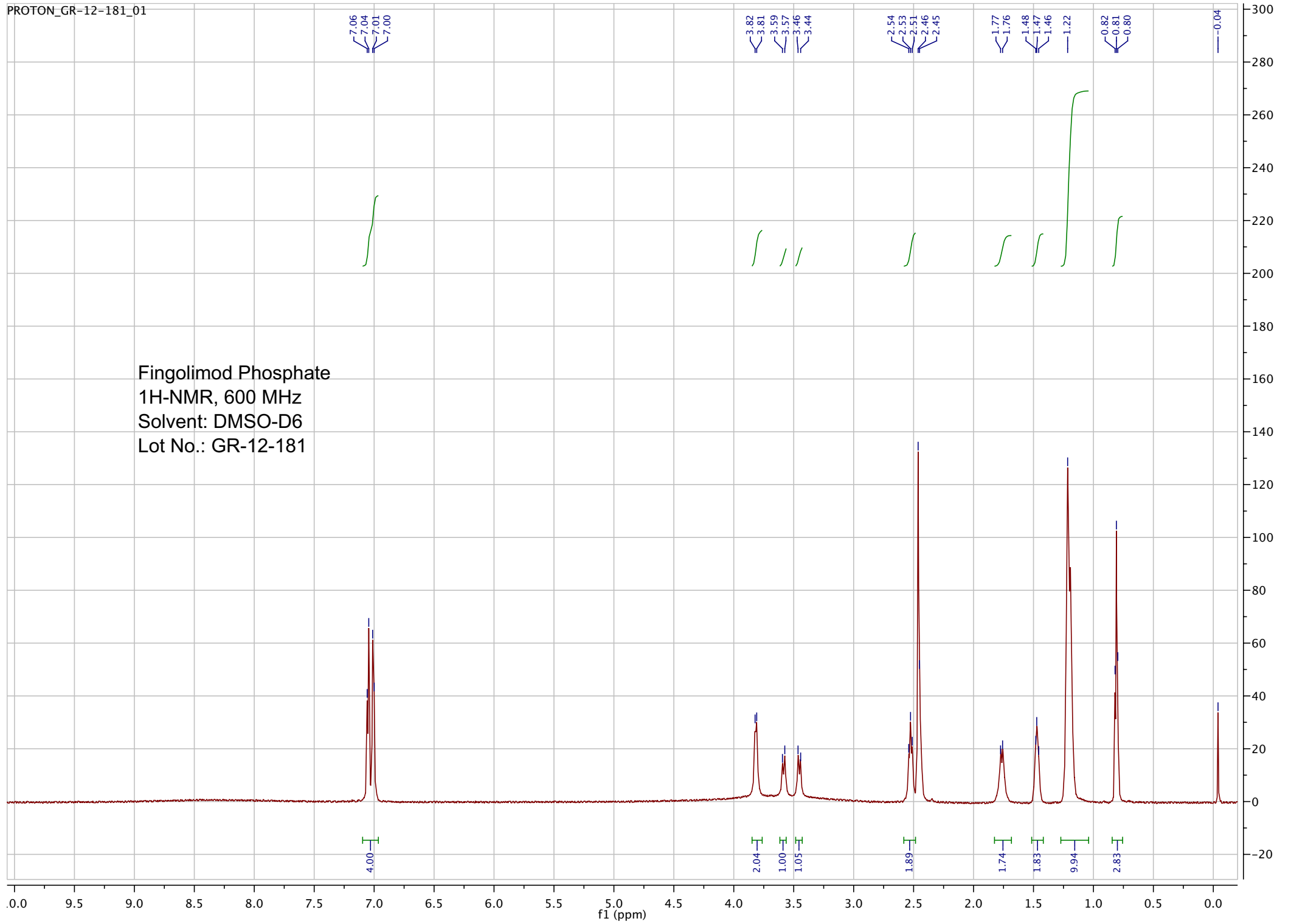
Approved by:

Date: 11/15/2024

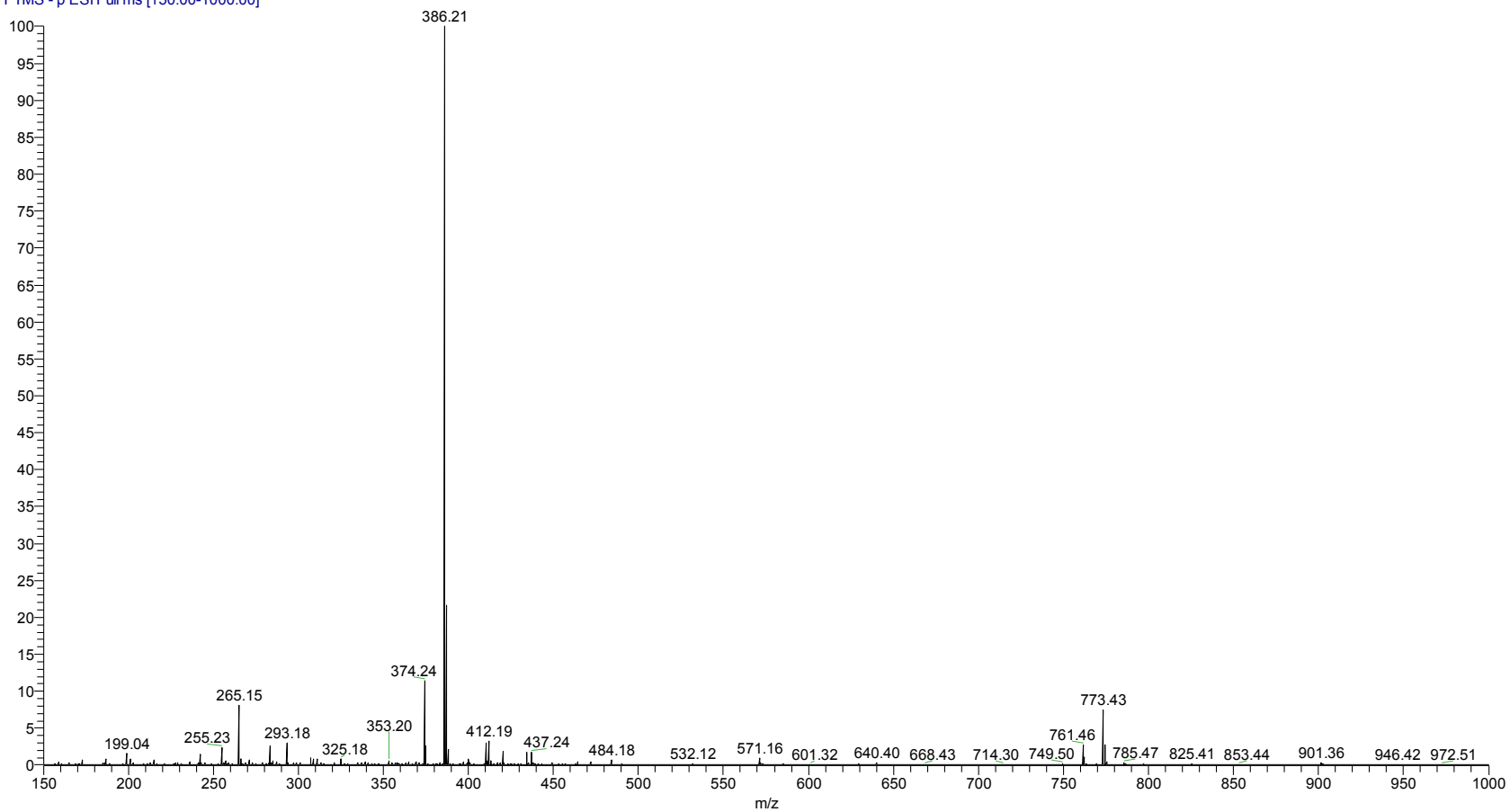


Viorica Rusu, QC/QA Manager

Fingolimod Phosphate  
1H-NMR, 600 MHz  
Solvent: DMSO-D6  
Lot No.: GR-12-181

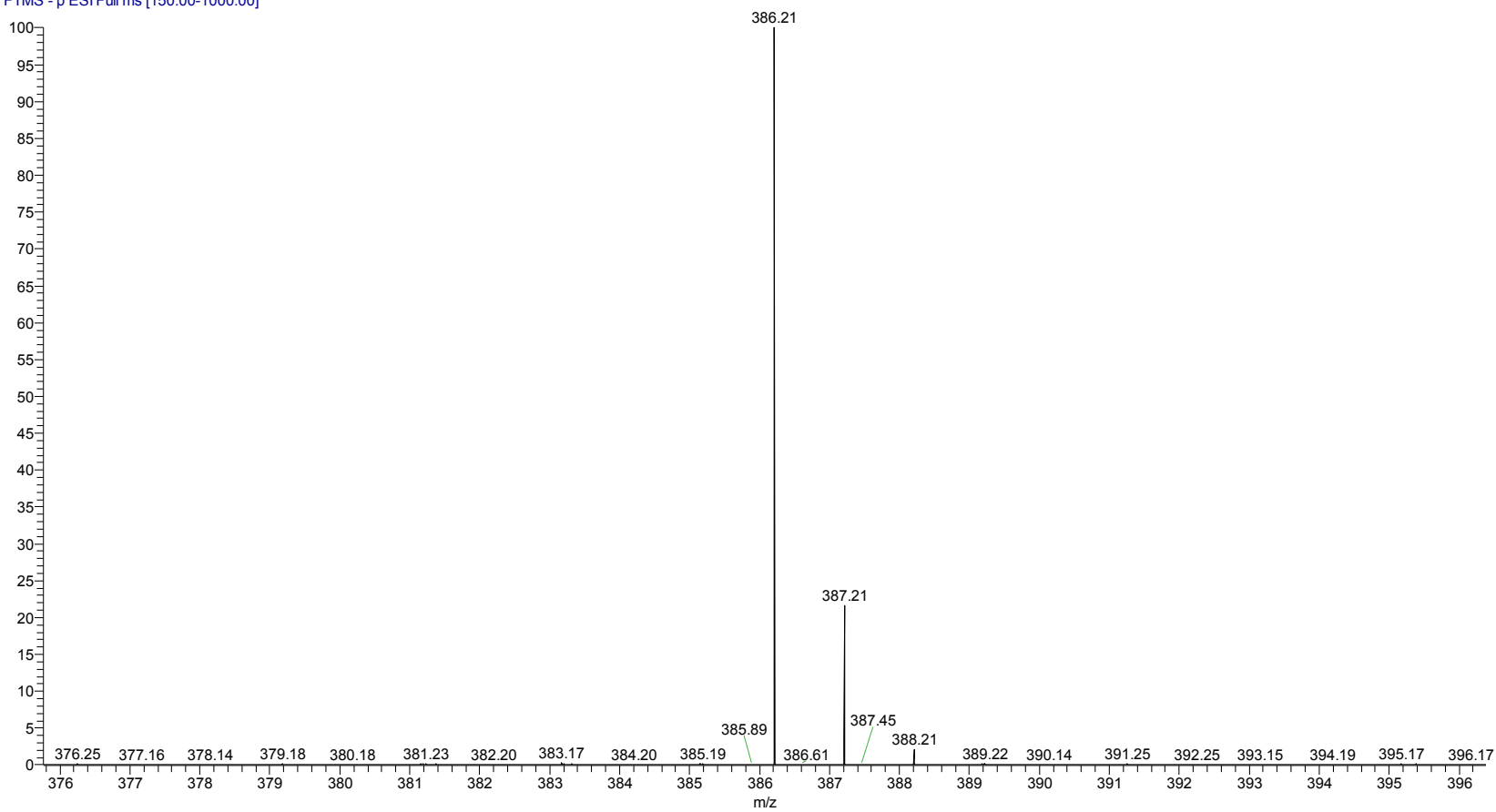


pp\_2018\_128\_GR\_12\_181#330-348 RT: 2.42-2.55 AV: 19 NL: 6.7;  
T: FTMS - p ESI Full ms [150.00-1000.00]



ESI-MS spectrum for sample GR-12-181. Shows monoisotopic [M-H]- mass.

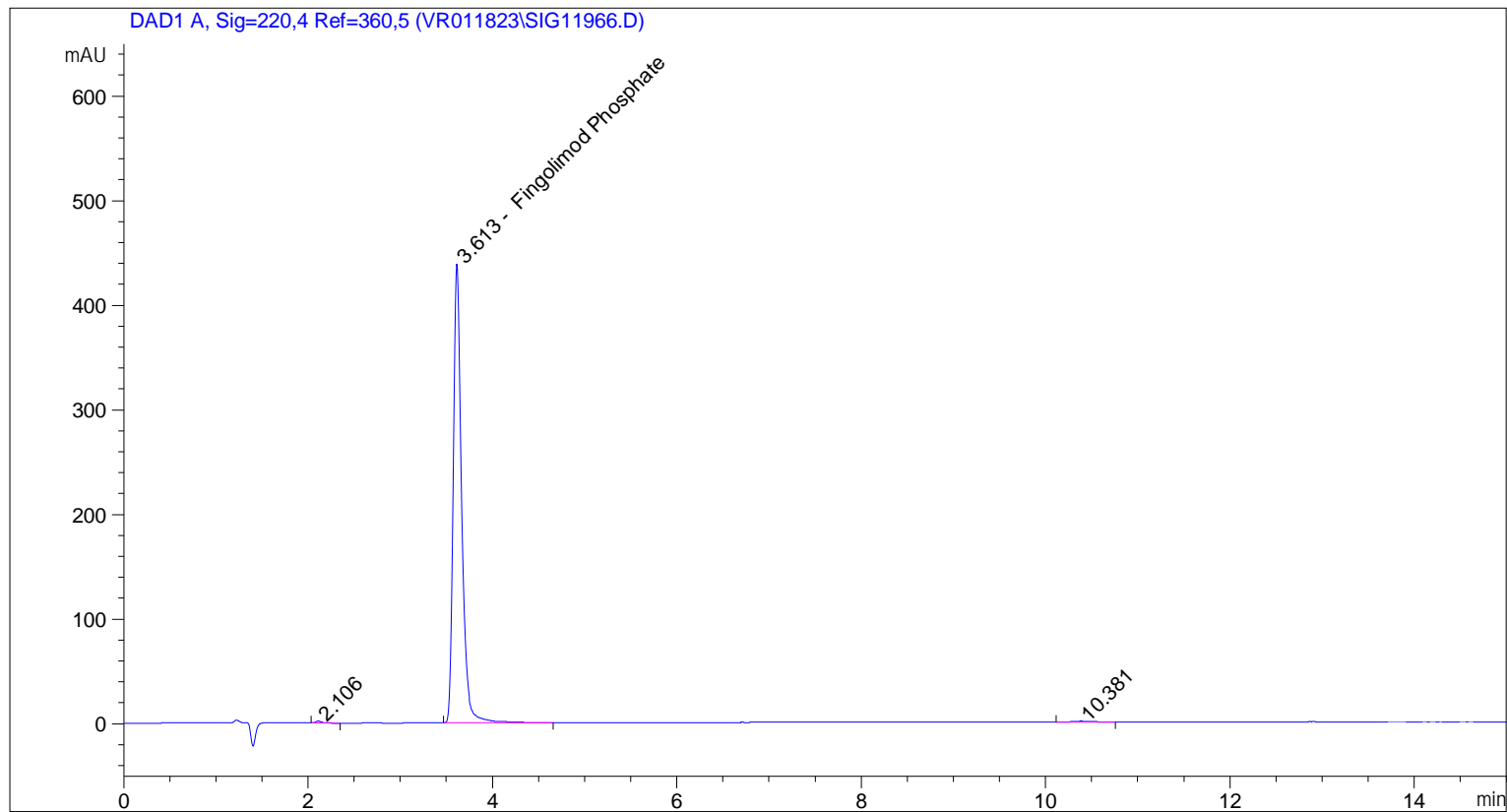
pp\_2018\_128\_GR\_12\_181 #330-348 RT: 2.42-2.55 AV: 19 NL: 6.7;  
T: FTMS - p ESI Full ms [150.00-1000.00]



*Expansion of above (+/- 10 Da from ion of interest).*

m/z	Intensity	Relative
199.04	1137382.4	1.68
242.18	980750.1	1.44
255.23	1627970.5	2.40
265.15	5475256.5	8.07
283.26	1796064.3	2.65
293.18	2130148.5	3.14
374.24	7833502.0	11.54
375.25	1744408.1	2.57
386.21	67888096.0	100.00
387.21	14610243.0	21.52
388.21	1445632.8	2.13
410.22	2018103.4	2.97
412.19	2226570.3	3.28
420.25	1258431.9	1.85
434.27	1146319.8	1.69
437.24	1183052.9	1.74
761.46	1880286.6	2.77
762.46	721521.9	1.06
773.43	5010088.5	7.38
774.43	1851188.3	2.73

=====  
Acq. Operator : vrusu  
Acq. Instrument : Instrument 1 Location : Vial 13  
Injection Date : 1/15/2024 9:58:40 AM Inj Volume : 5.0 µl  
Acq. Method : C:\CHEM32\1\METHODS\VR011524\_181.M  
Last changed : 1/15/2024 9:57:35 AM by vrusu  
Analysis Method : C:\CHEM32\1\METHODS\VR011524\_181PM.M  
Last changed : 1/15/2024 9:51:42 AM by vrusu



=====  
Area Percent Report  
=====

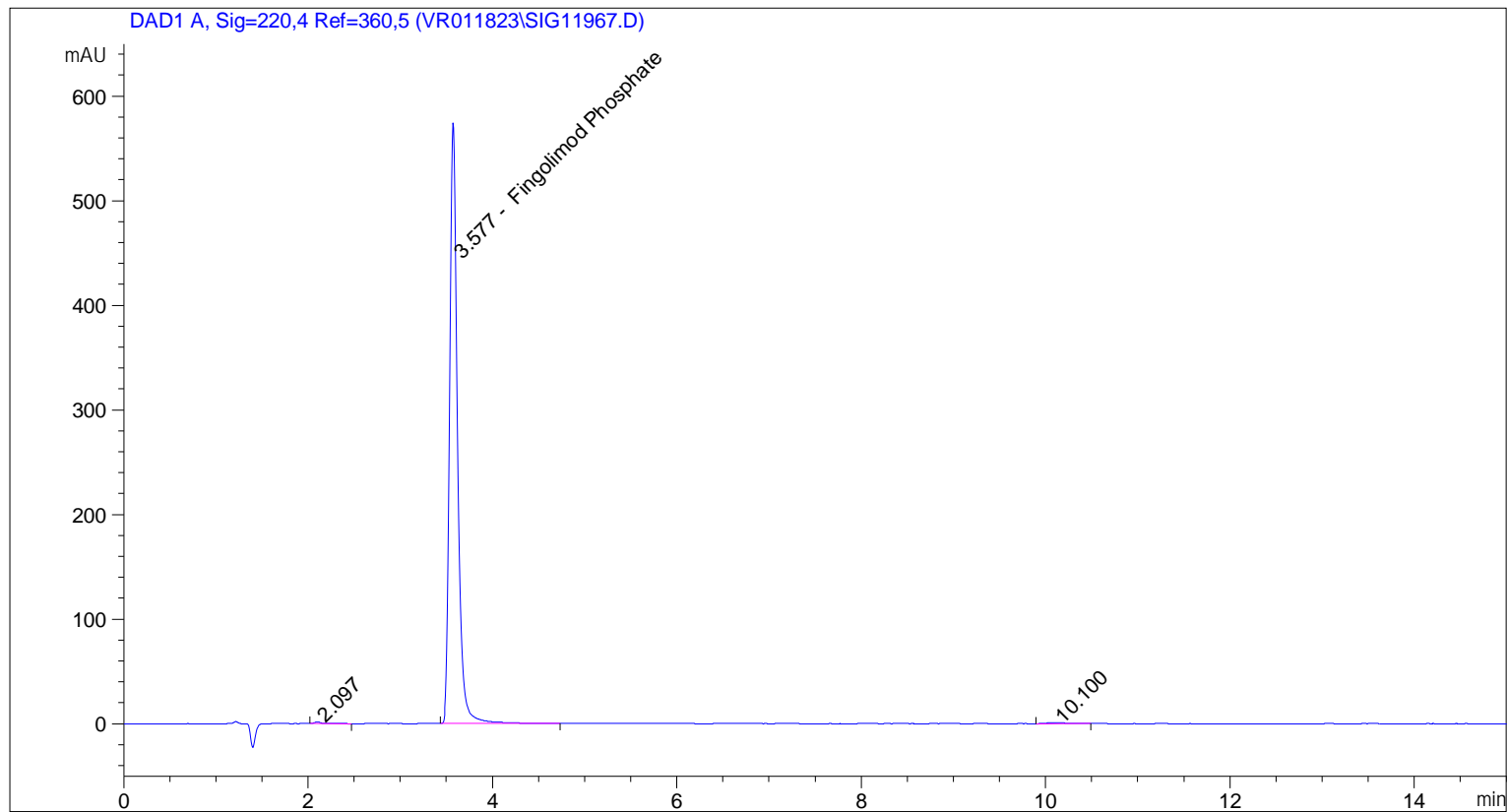
Sorted By : Signal  
Calib. Data Modified : 1/15/2024 9:50:38 AM  
Multiplier: : 1.0000  
Dilution: : 1.0000  
Use Multiplier & Dilution Factor with ISTDs

Signal 1: DAD1 A, Sig=220,4 Ref=360,5

Peak #	RetTime [min]	Type	Width [min]	Area [mAU*s]	Area %	Name
1	2.106	BB	0.0766	8.90923	0.3245	?
2	3.613	BB	0.0923	2723.31958	99.1950	Fingolimod Phosphate
3	10.381	BB	0.1838	13.19019	0.4804	?

Totals : 2745.41900

=====  
Acq. Operator : vrusu  
Acq. Instrument : Instrument 1 Location : Vial 14  
Injection Date : 1/15/2024 10:23:47 AM Inj Volume : 5.0 µl  
Acq. Method : C:\CHEM32\1\METHODS\VR011524\_181.M  
Last changed : 1/15/2024 10:22:47 AM by vrusu  
Analysis Method : C:\CHEM32\1\METHODS\VR011524\_181PM.M  
Last changed : 1/15/2024 9:51:42 AM by vrusu



=====  
Area Percent Report  
=====

Sorted By : Signal  
Calib. Data Modified : 1/15/2024 9:50:38 AM  
Multiplier: : 1.0000  
Dilution: : 1.0000  
Use Multiplier & Dilution Factor with ISTDs

Signal 1: DAD1 A, Sig=220,4 Ref=360,5

Peak #	RetTime [min]	Type	Width [min]	Area [mAU*s]	Area %	Name
1	2.097	BB	0.0793	9.65405	0.2848	?
2	3.577	BB	0.0863	3364.38989	99.2546	Fingolimod Phosphate
3	10.100	BB	0.1747	15.61165	0.4606	?

Totals : 3389.65559