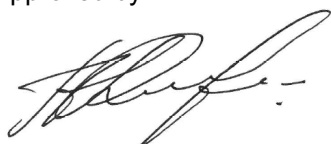


Name:	Lansoprazole Sulfide-D4
Lot#:	GR-9-065
Test Date:	01/13/2022 (re-test date: 01/13/2027)
CAS No.:	1216682-38-0
MF:	C ₁₈ H ₁₀ D ₄ F ₃ N ₃ OS
MW:	357.39
Appearance:	White Solid
Purity:	99.7% by HPLC (average of two sample preparations); 99% atom D
¹H-NMR:	Conforms
MS-ESI (+)	Conforms (shows peak at m/z = 358.16 [M+H] ⁺)
Storage	Store at -18°C in a dry place away from direct sunlight

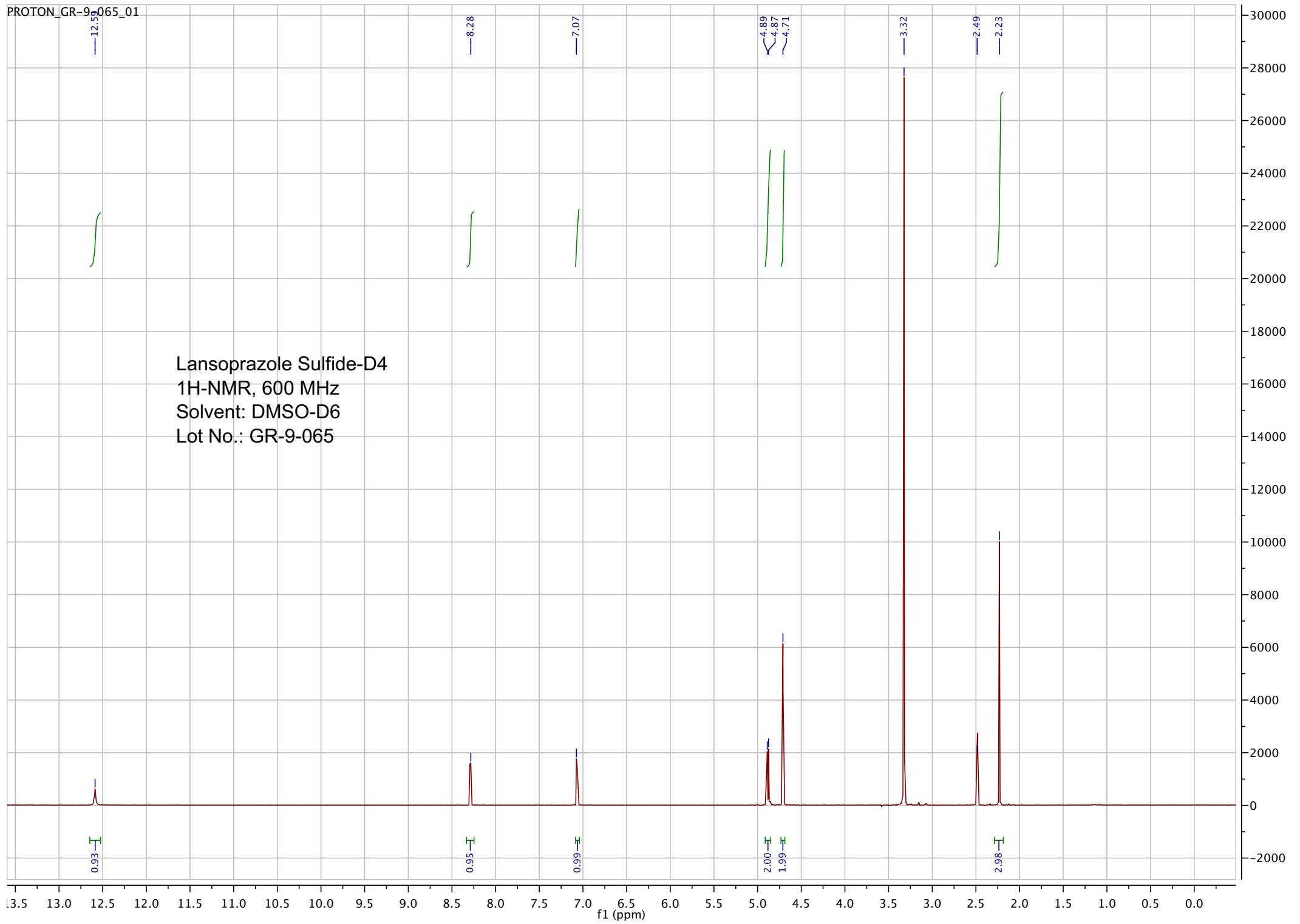
Approved by:

Date: 01/13/2022



Viorica Rusu, QC/QA Manager

Lansoprazole Sulfide-D4
1H-NMR, 600 MHz
Solvent: DMSO-D6
Lot No.: GR-9-065



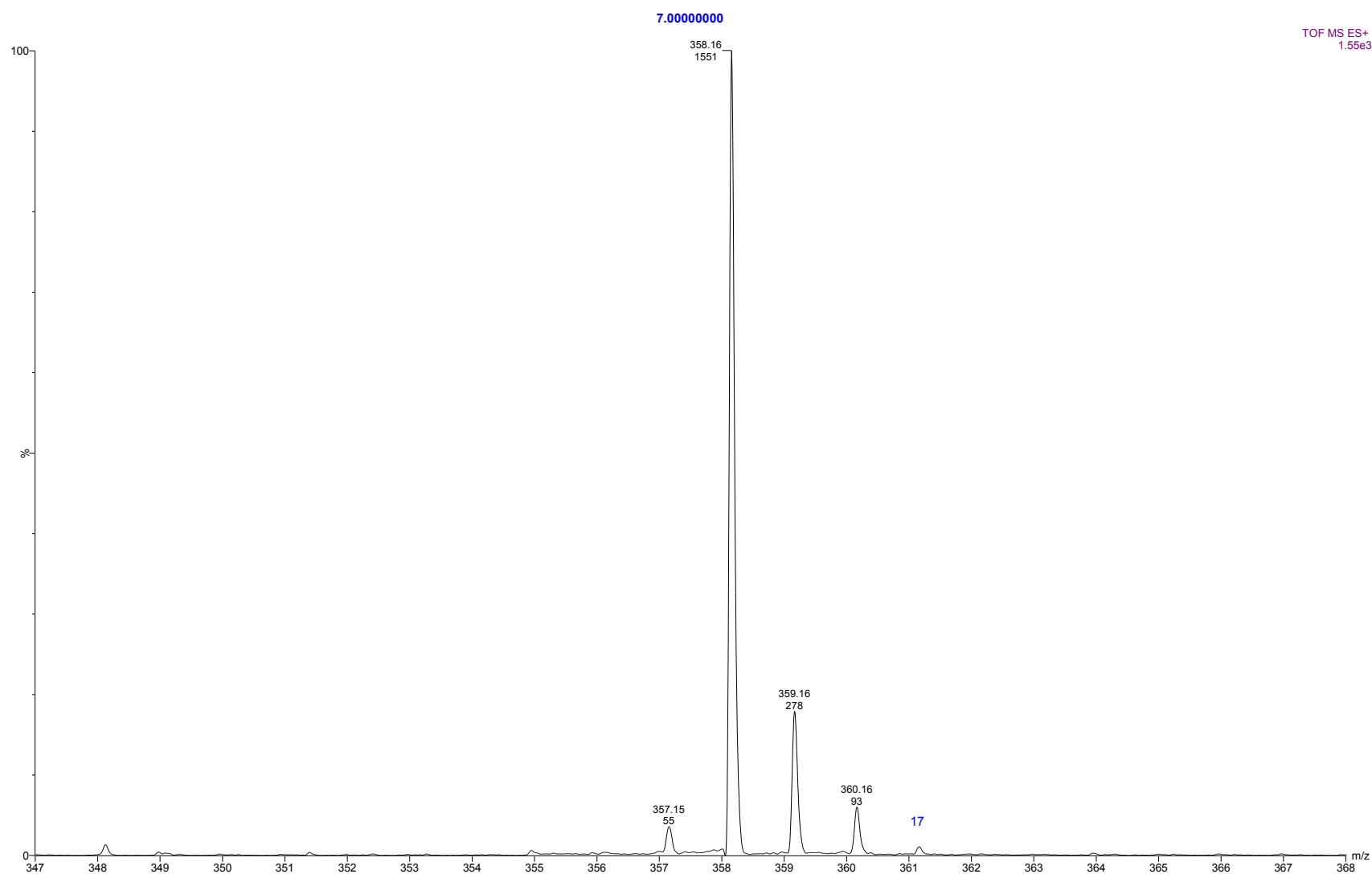
7.0000000

TOF MS ES+
1.55e3



ESI-MS spectrum for sample GR-9-065. Shows monoisotopic [M+H]⁺ mass.

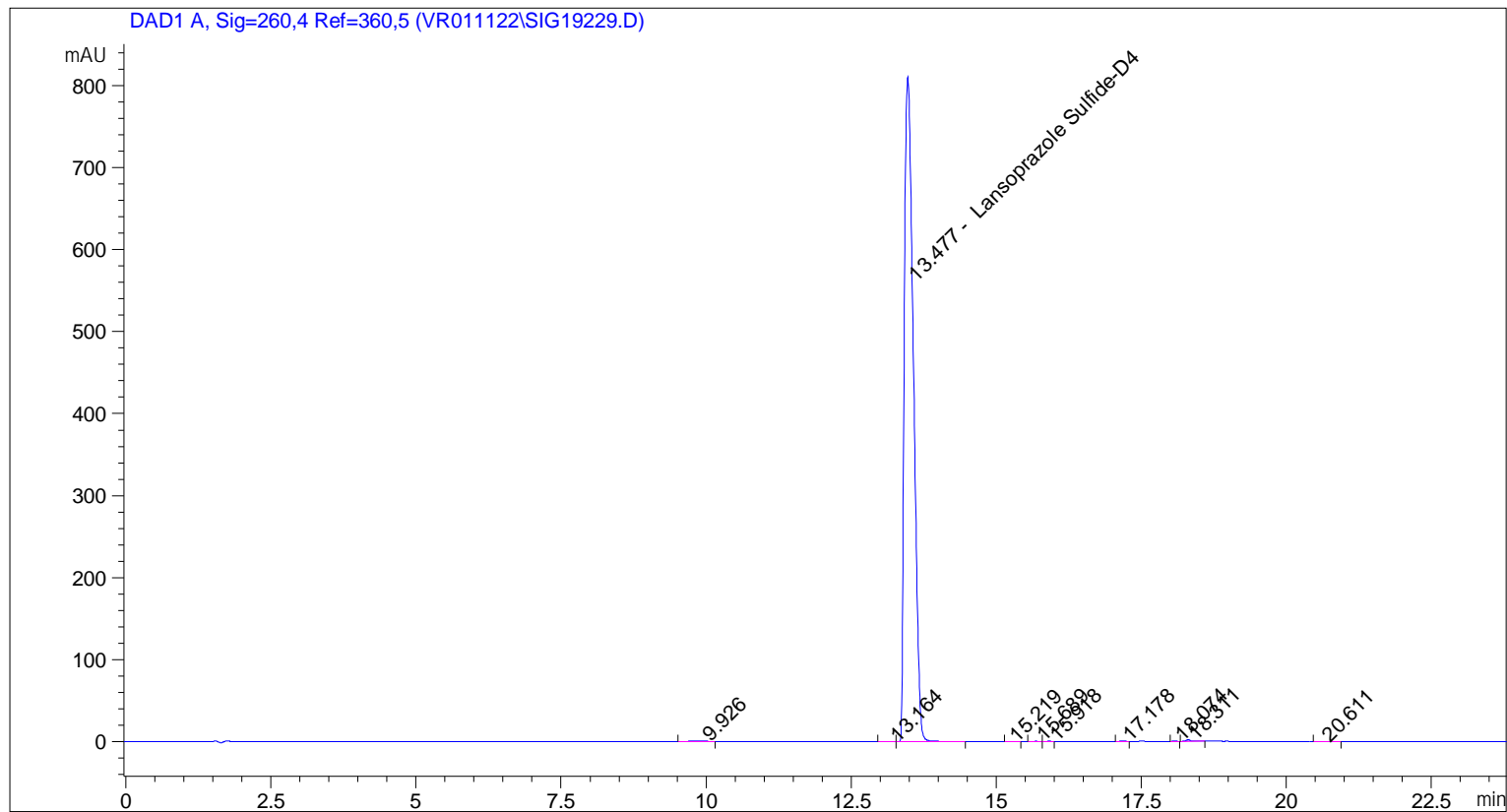
TOF MS ES+
1.55e3



Expansion of above with intensity labels.

```

=====
Acq. Operator   : vrusu
Acq. Instrument : Instrument 1                Location : Vial 87
Injection Date  : 1/13/2022 9:09:49 AM
                                           Inj Volume : 10.0 µl
Acq. Method     : C:\CHEM32\1\METHODS\VR011322_065.M
Last changed    : 1/13/2022 9:08:45 AM by vrusu
Analysis Method  : C:\CHEM32\1\METHODS\VR011322_065PM.M
Last changed    : 1/13/2022 10:12:28 AM by vrusu
  
```



=====
 Area Percent Report
 =====

```

Sorted By           :      Signal
Calib. Data Modified :      1/13/2022 10:12:07 AM
Multiplier:         :      1.0000
Dilution:           :      1.0000
Use Multiplier & Dilution Factor with ISTDs
  
```

Signal 1: DAD1 A, Sig=260,4 Ref=360,5

Peak #	RetTime [min]	Type	Width [min]	Area [mAU*s]	Area %	Name
1	9.926	BB	0.2292	5.89848	0.0662	?
2	13.164	BV	0.1328	1.63607	0.0184	?
3	13.477	VB	0.1779	8884.74805	99.7131	Lansoprazole Sulfide-D4
4	15.219	BB	0.0796	1.08929	0.0122	?
5	15.689	BB	0.0812	1.63956	0.0184	?
6	15.918	BB	0.0743	1.42841	0.0160	?
7	17.178	BB	0.0890	1.10599	0.0124	?
8	18.074	BB	0.0725	8.87871e-1	9.965e-3	?

Sample Name: GR-9-065

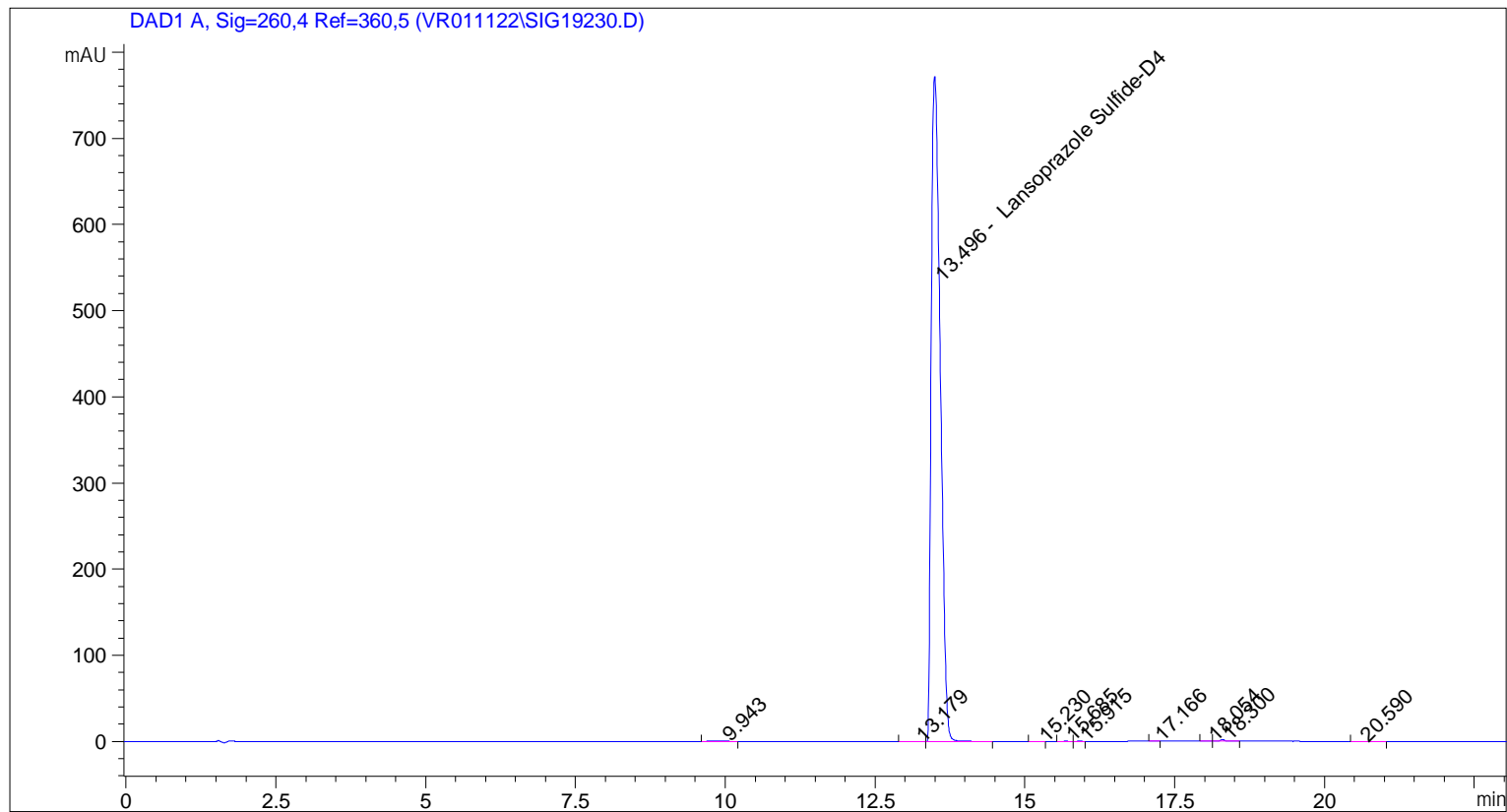
Peak #	RetTime [min]	Type	Width [min]	Area [mAU*s]	Area %	Name
9	18.311	BB	0.0858	10.60238	0.1190	?
10	20.611	BB	0.1143	1.27449	0.0143	?

Totals : 8910.31058

=====
*** End of Report ***

```

=====
Acq. Operator   : vrusu
Acq. Instrument : Instrument 1                Location : Vial 88
Injection Date  : 1/13/2022 9:42:07 AM
                                           Inj Volume : 10.0 µl
Acq. Method     : C:\CHEM32\1\METHODS\VR011322_065.M
Last changed    : 1/13/2022 9:41:00 AM by vrusu
Analysis Method : C:\CHEM32\1\METHODS\VR011322_065PM.M
Last changed    : 1/13/2022 10:12:28 AM by vrusu
  
```



=====
 Area Percent Report
 =====

```

Sorted By       : Signal
Calib. Data Modified : 1/13/2022 10:12:07 AM
Multiplier:     : 1.0000
Dilution:       : 1.0000
Use Multiplier & Dilution Factor with ISTDs
  
```

Signal 1: DAD1 A, Sig=260,4 Ref=360,5

Peak #	RetTime [min]	Type	Width [min]	Area [mAU*s]	Area %	Name
1	9.943	BB	0.2016	4.83084	0.0594	?
2	13.179	BV	0.1867	2.10439	0.0259	?
3	13.496	VB	0.1687	8114.91211	99.7097	Lansoprazole Sulfide-D4
4	15.230	BB	0.0808	9.38797e-1	0.0115	?
5	15.685	BB	0.0804	1.34516	0.0165	?
6	15.915	BB	0.0704	1.33867	0.0164	?
7	17.166	BB	0.0756	9.32349e-1	0.0115	?
8	18.054	BB	0.0812	1.03317	0.0127	?

Sample Name: GR-9-065 spl-2

Peak #	RetTime [min]	Type	Width [min]	Area [mAU*s]	Area %	Name
9	18.300	BB	0.0827	9.19437	0.1130	?
10	20.590	BB	0.1670	1.90544	0.0234	?

Totals : 8138.53530

=====
*** End of Report ***