

Name:	Omeprazole- ¹³ C, ^{D3} Sulfone
Lot#:	GR-9-147-1
Test Date:	01/26/2022 (re-test date: 01/26/2027)
CAS No.:	1261393-28-5
MF:	C ₁₆ ¹³ CH ₁₆ D ₃ N ₃ O ₄ S
MW:	365.43
Appearance:	Off-white solid
Purity:	99.8% by HPLC (average of two sample preparations); 99% atom ¹³ C, 99% atom D
¹H-NMR:	Conforms
MS-ESI (+)	Conforms (shows peak at m/z = 366.16 [M+H] ⁺)
Storage	Long term store at - 18° C in a dry place away from direct sunlight

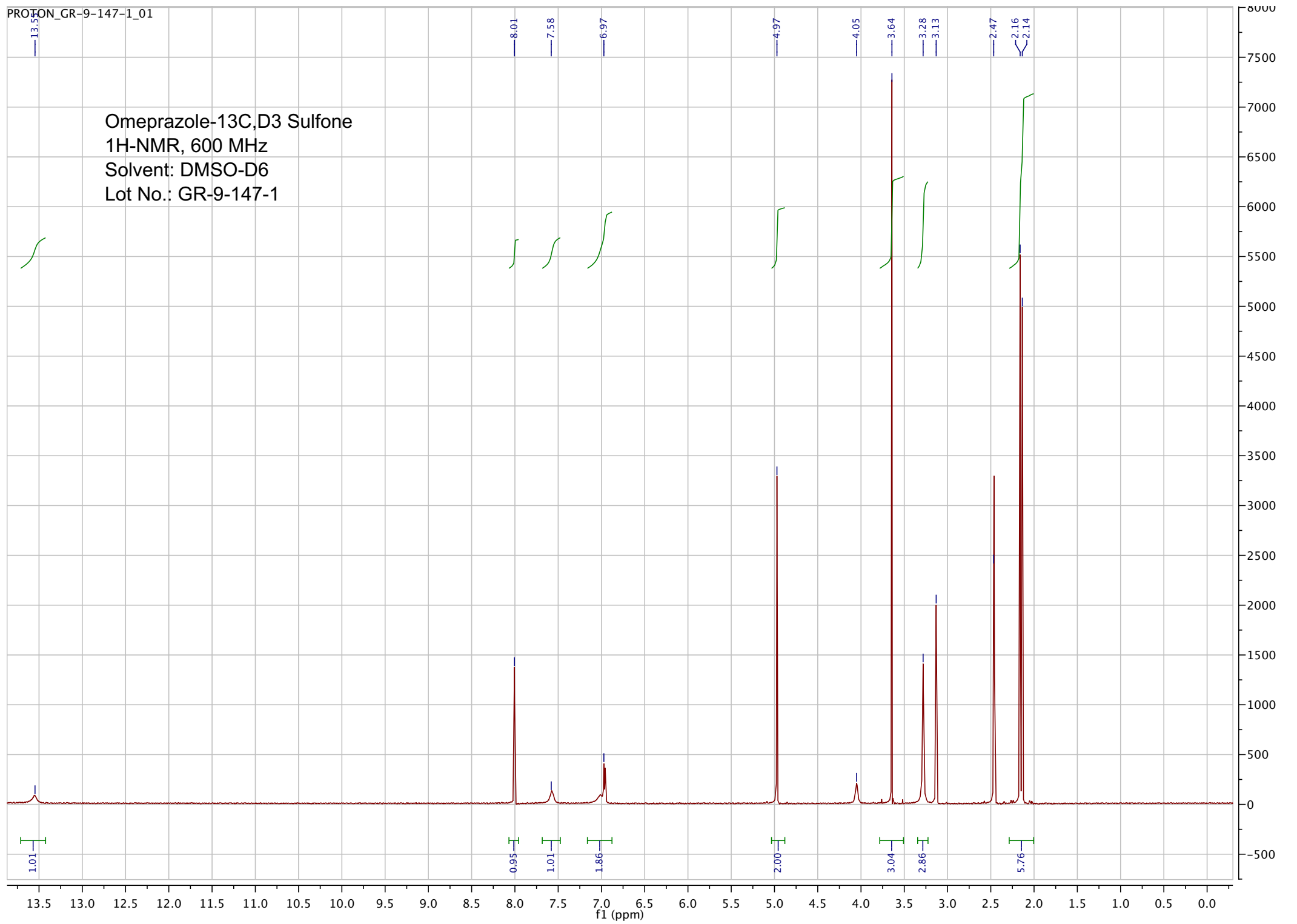
Approved by:

Date: 01/26/2022



Viorica Rusu, QC/QA Manager

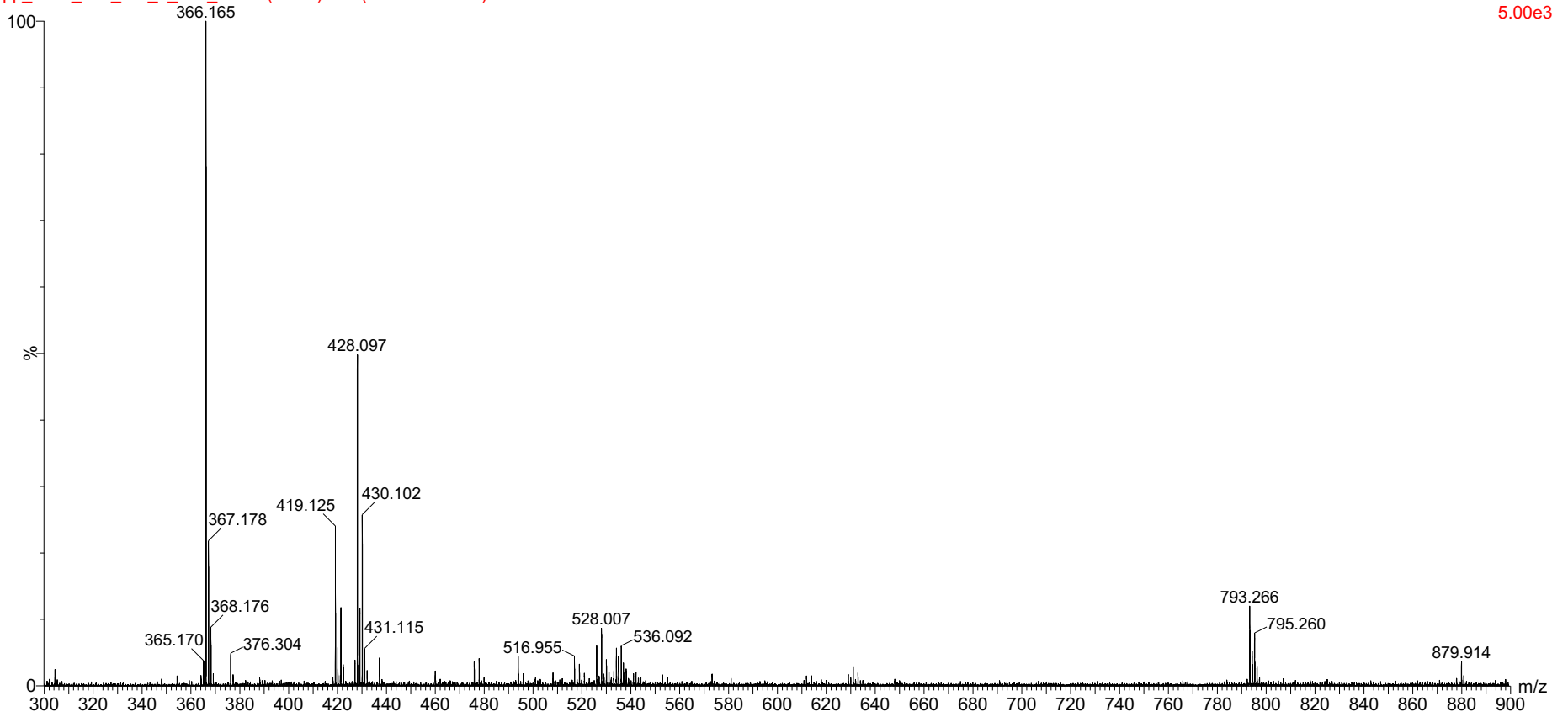
Omeprazole-13C,D3 Sulfone
1H-NMR, 600 MHz
Solvent: DMSO-D6
Lot No.: GR-9-147-1



9.0000000

pp_2016_136_GR_9_147_1 114 (2.162) Cm (109:116-11:18)

TOF MS ES+
5.00e3

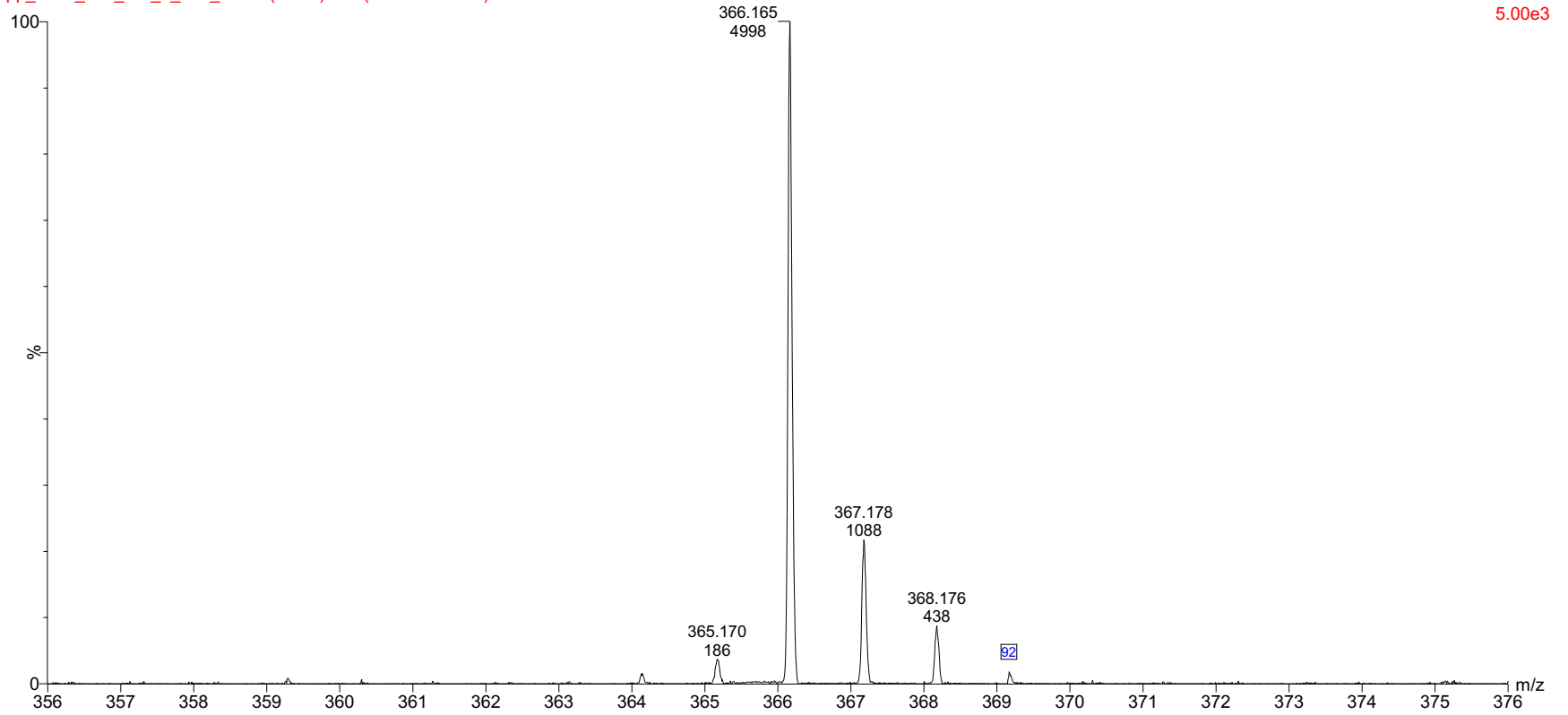


Raw ESI-MS spectrum for sample GR-9-147-1. Shows monoisotopic [M+H]⁺ mass.

pp_2016_136_GR_9_147_1 114 (2.162) Cm (109:116-11:18)

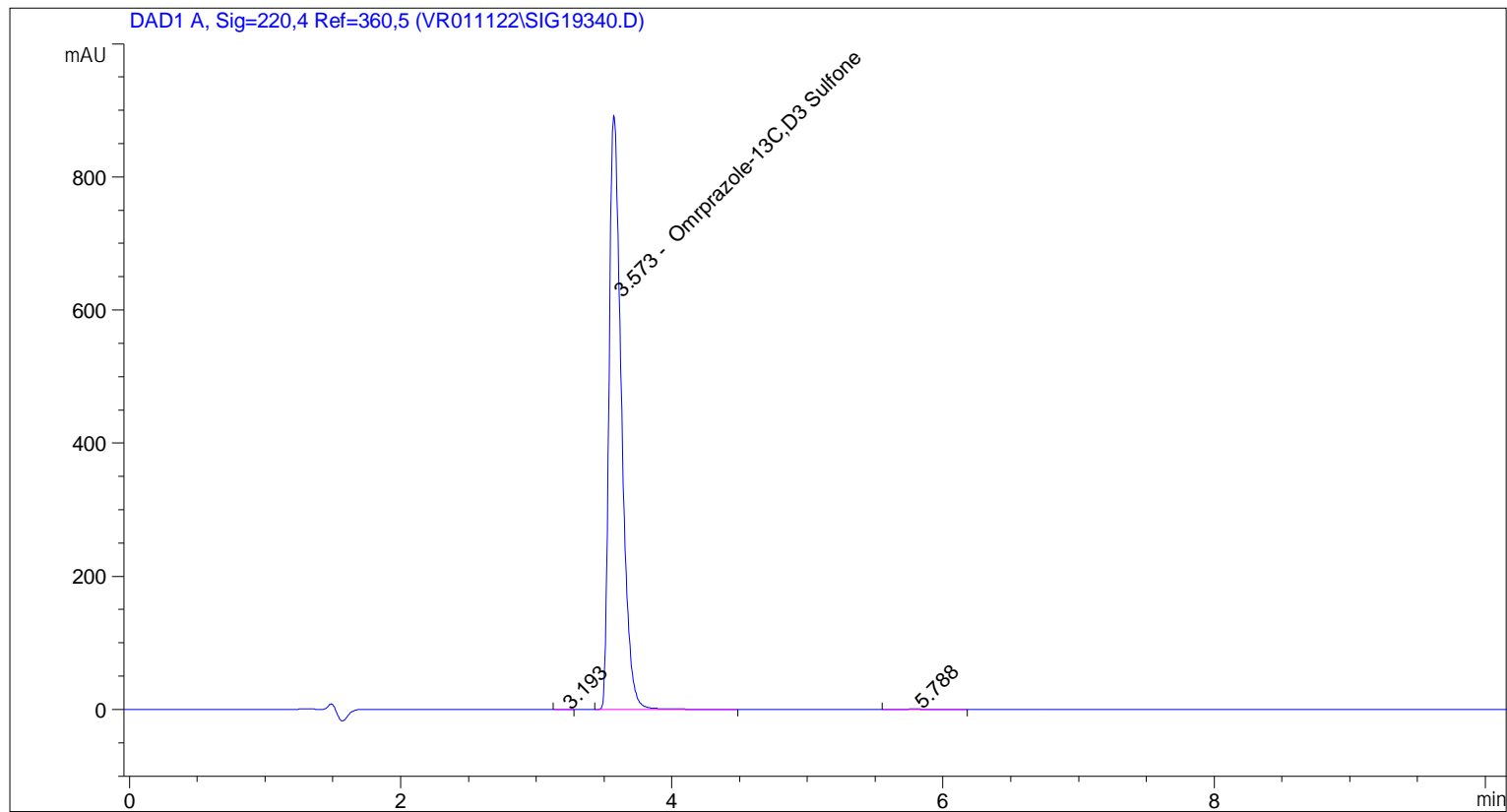
9.00000000

TOF MS ES+
5.00e3



Expansion of above showing intensity labels.

=====
Acq. Operator : vrusu
Acq. Instrument : Instrument 1 Location : Vial 44
Injection Date : 1/26/2022 1:28:32 PM Inj Volume : 5.0 µl
Acq. Method : C:\CHEM32\1\METHODS\VR012622_147.M
Last changed : 1/26/2022 1:27:34 PM by vrusu
Analysis Method : C:\CHEM32\1\METHODS\VR012622_147PM.M
Last changed : 1/26/2022 2:06:52 PM by vrusu



=====
Area Percent Report
=====

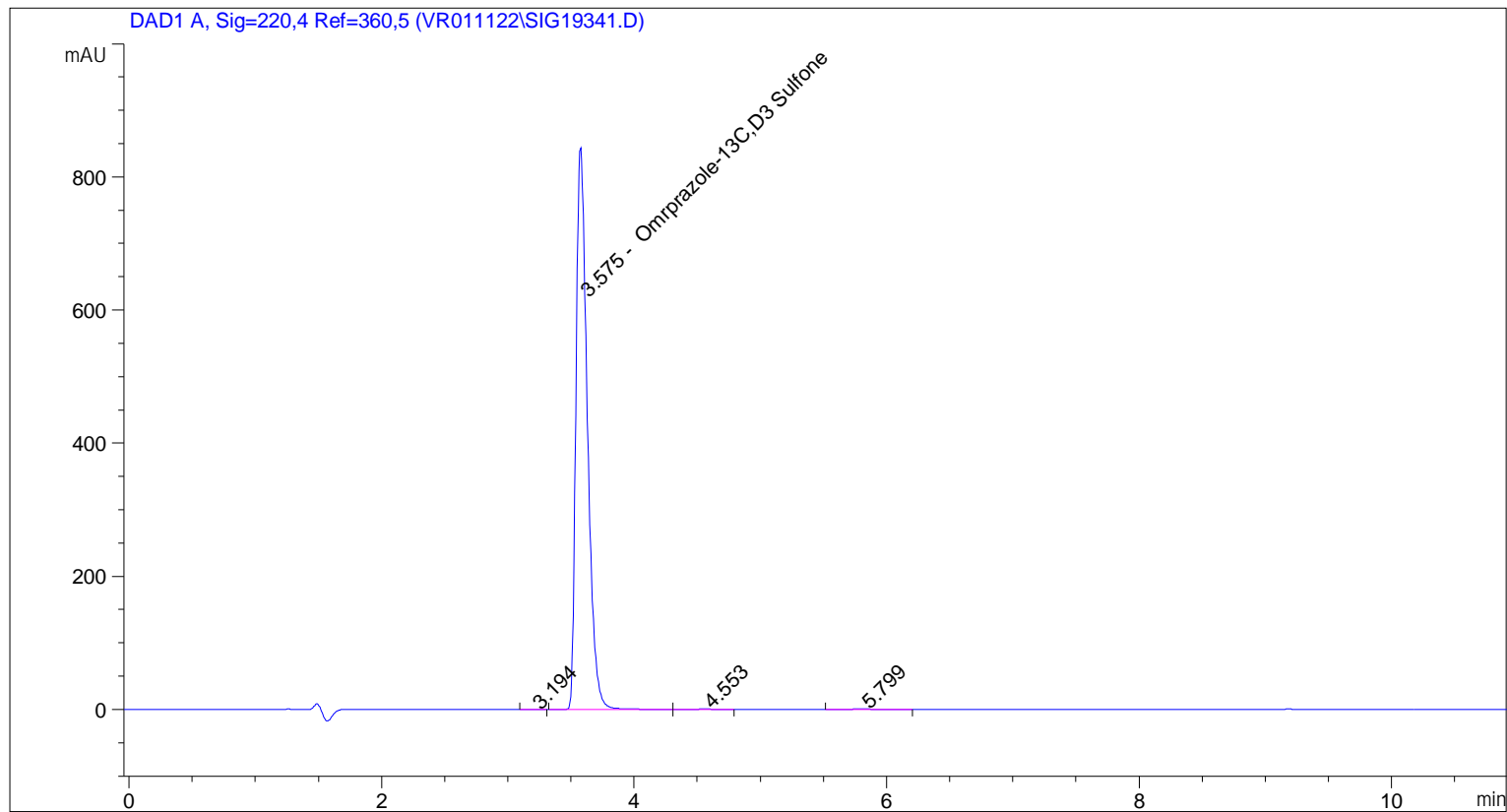
Sorted By : Signal
Calib. Data Modified : 1/26/2022 2:06:23 PM
Multiplier: : 1.0000
Dilution: : 1.0000
Use Multiplier & Dilution Factor with ISTDs

Signal 1: DAD1 A, Sig=220,4 Ref=360,5

Peak #	RetTime [min]	Type	Width [min]	Area [mAU*s]	Area %	Name
1	3.193	BB	0.0681	7.83539e-1	0.0138	?
2	3.573	BB	0.0979	5661.21045	99.8447	Omrprazole-13C,D3 Sulfone
3	5.788	BB	0.1778	8.02448	0.1415	?

Totals : 5670.01846

=====
Acq. Operator : vrusu
Acq. Instrument : Instrument 1 Location : Vial 45
Injection Date : 1/26/2022 1:40:25 PM Inj Volume : 5.0 µl
Acq. Method : C:\CHEM32\1\METHODS\VR012622_147.M
Last changed : 1/26/2022 1:39:31 PM by vrusu
Analysis Method : C:\CHEM32\1\METHODS\VR012622_147PM.M
Last changed : 1/26/2022 2:06:52 PM by vrusu



=====
Area Percent Report
=====

Sorted By : Signal
Calib. Data Modified : 1/26/2022 2:06:23 PM
Multiplier: : 1.0000
Dilution: : 1.0000
Use Multiplier & Dilution Factor with ISTDs

Signal 1: DAD1 A, Sig=220,4 Ref=360,5

Peak #	RetTime [min]	Type	Width [min]	Area [mAU*s]	Area %	Name
1	3.194	BB	0.0850	1.38865	0.0261	?
2	3.575	BB	0.0954	5310.27197	99.6870	Omrprazole-13C,D3 Sulfone
3	4.553	BB	0.1475	5.87854	0.1104	?
4	5.799	BB	0.1771	9.40857	0.1766	?

Totals : 5326.94773

=====

*** End of Report ***