

<b>Name:</b>	<b>Prasugrel-D4 Metabolite (R95913 Mixture of Diastereomers)</b>
<b>Lot#:</b>	GR-8-251
<b>Test Date:</b>	01/13/2022 (re-test date: 01/13/2027)
<b>CAS No.:</b>	150322-38-6 (unlabeled)
<b>MF:</b>	C <sub>18</sub> H <sub>14</sub> D <sub>4</sub> FNO <sub>2</sub> S
<b>MW:</b>	335.44
<b>Appearance:</b>	Beige solid
<b>Purity:</b>	99.6% by HPLC (sum of isomers; average of two sample preparations); 99% atom D
<b><sup>1</sup>H-NMR:</b>	Conforms
<b>MS-ESI (+)</b>	Conforms (shows peak at m/z = 336.15 [M+H] <sup>+</sup> )
<b>Storage</b>	Store at -18°C in a dry place away from direct sunlight

Approved by:

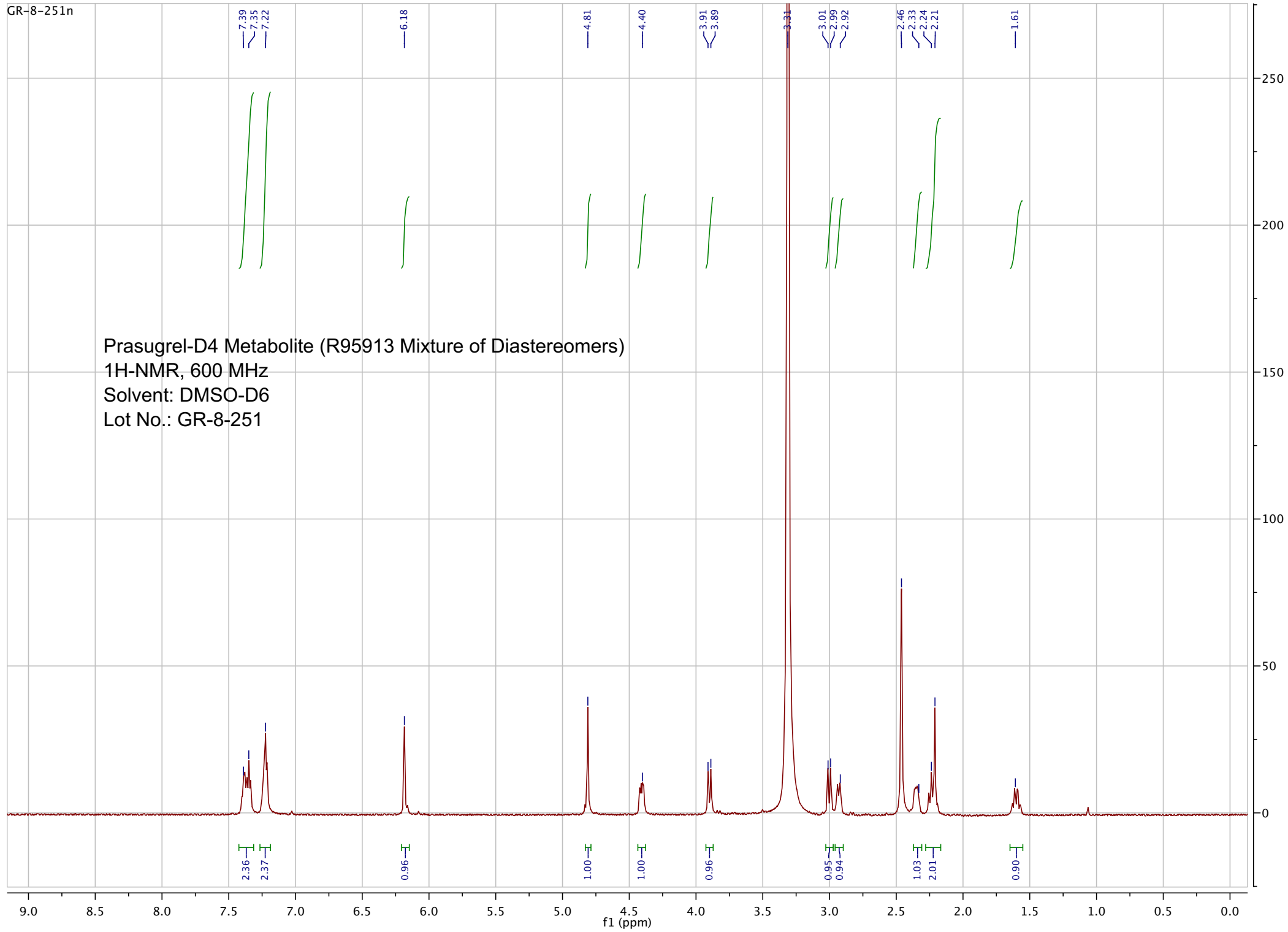
Date: 01/13/2022

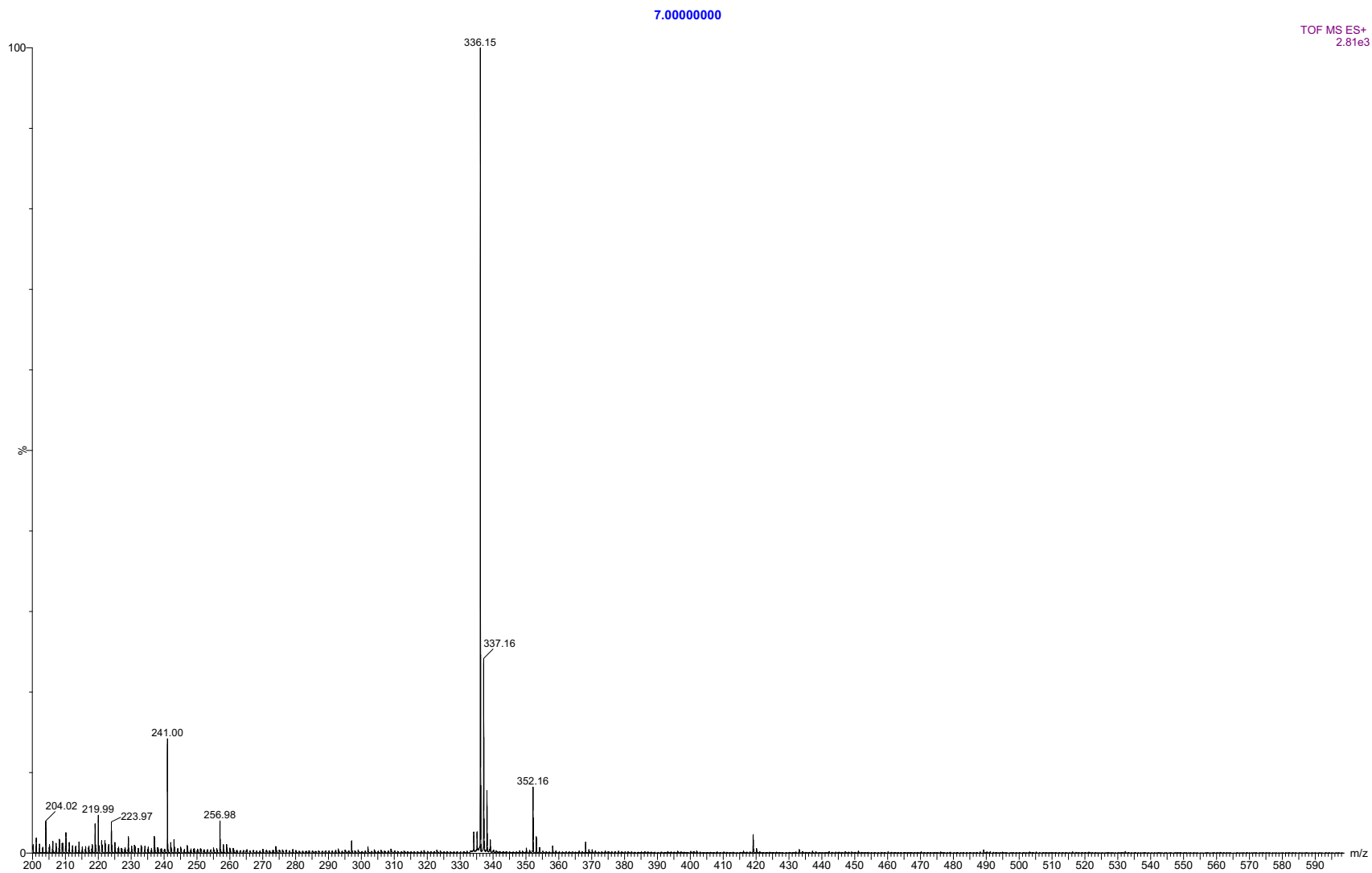


Viorica Rusu, QC/QA Manager

GR-8-251n

Prasugrel-D4 Metabolite (R95913 Mixture of Diastereomers)  
1H-NMR, 600 MHz  
Solvent: DMSO-D6  
Lot No.: GR-8-251

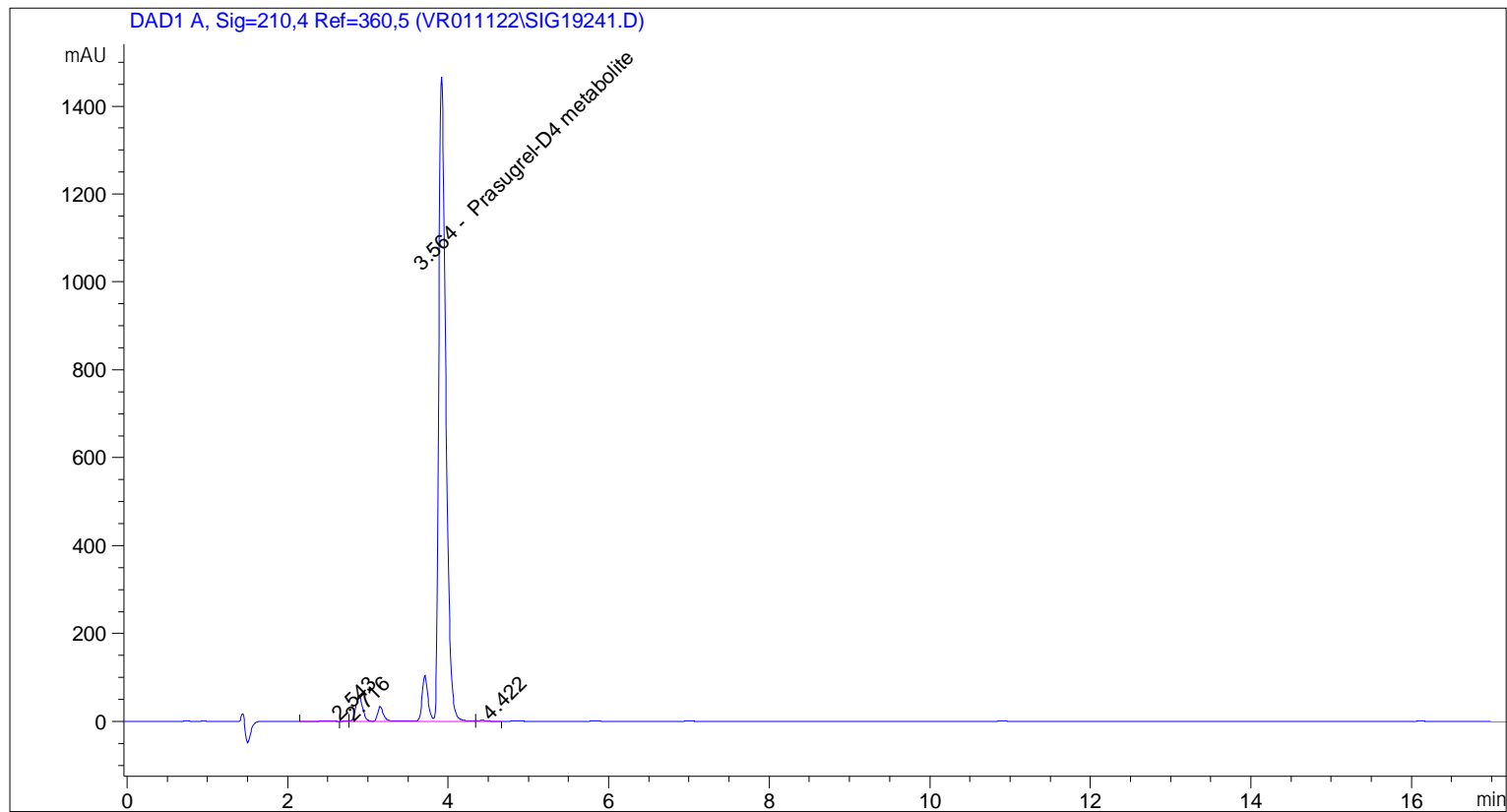




ESI-MS spectrum for sample GR-8-251. Shows monoisotopic [M+H]<sup>+</sup> mass.

```

=====
Acq. Operator   : vrusu
Acq. Instrument : Instrument 1                Location : Vial 95
Injection Date  : 1/13/2022 2:39:36 PM
                                           Inj Volume : 5.0 µl
Acq. Method    : C:\CHEM32\1\METHODS\VR011322_251.M
Last changed   : 1/13/2022 2:38:33 PM by vrusu
Analysis Method : C:\CHEM32\1\METHODS\VR011322_251PM.M
Last changed   : 1/13/2022 3:10:56 PM by vrusu
  
```



=====  
 Area Percent Report  
 =====

```

Sorted By      :      Signal
Calib. Data Modified :      1/13/2022 3:10:38 PM
Multiplier:    :      1.0000
Dilution:     :      1.0000
Use Multiplier & Dilution Factor with ISTDs
  
```

Signal 1: DAD1 A, Sig=210,4 Ref=360,5

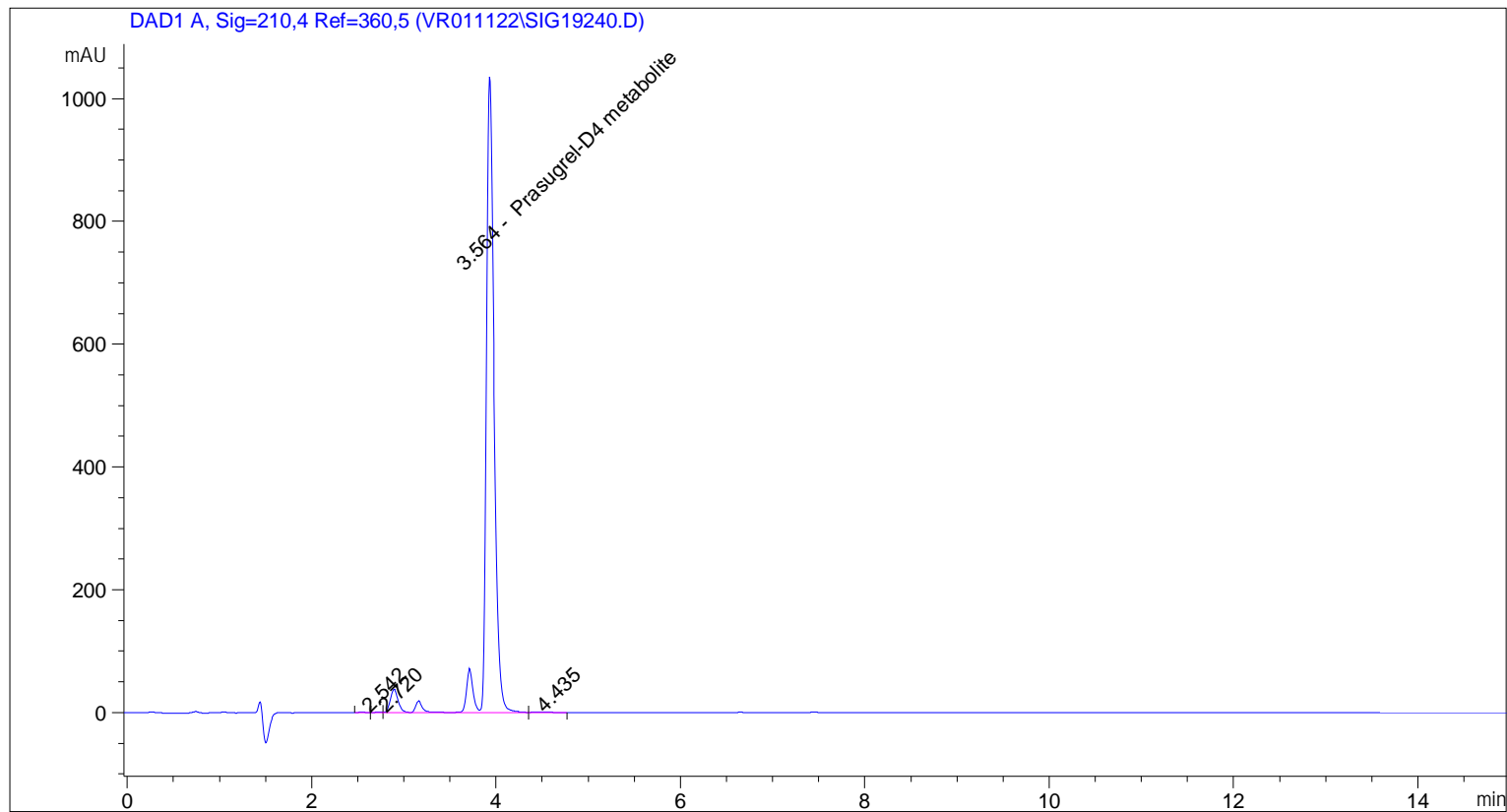
Peak #	RetTime [min]	Type	Width [min]	Area [mAU*s]	Area %	Name
1	2.543	BB	0.1239	17.73768	0.1758	?
2	2.716	BV	0.0692	3.87356	0.0384	?
3	3.564	VVA+	0.1143	1.00517e4	99.6213	Prasugrel-D4 metabolite
4	4.422	VB	0.1073	16.60234	0.1645	?

Totals : 1.00899e4

=====

\*\*\* End of Report \*\*\*

=====  
Acq. Operator : vrusu  
Acq. Instrument : Instrument 1 Location : Vial 94  
Injection Date : 1/13/2022 2:22:51 PM Inj Volume : 5.0 µl  
Acq. Method : C:\CHEM32\1\METHODS\VR011322\_251.M  
Last changed : 1/13/2022 2:21:51 PM by vrusu  
Analysis Method : C:\CHEM32\1\METHODS\VR011322\_251PM.M  
Last changed : 1/13/2022 3:10:56 PM by vrusu



=====  
Area Percent Report  
=====

Sorted By : Signal  
Calib. Data Modified : 1/13/2022 3:10:38 PM  
Multiplier: : 1.0000  
Dilution: : 1.0000  
Use Multiplier & Dilution Factor with ISTDs

Signal 1: DAD1 A, Sig=210,4 Ref=360,5

Peak #	RetTime [min]	Type	Width [min]	Area [mAU*s]	Area %	Name
1	2.542	BB	0.0644	3.22189	0.0477	?
2	2.720	BV	0.0766	4.24896	0.0629	?
3	3.564	VVA+	0.1082	6723.65381	99.5756	Prasugrel-D4 metabolite
4	4.435	VB	0.1614	21.18445	0.3137	?

Totals : 6752.30911

=====

\*\*\* End of Report \*\*\*