

<b>Name:</b>	<b>Spironolactone-D3</b>
<b>Lot#:</b>	VR-2-139
<b>Test Date:</b>	04/08/2022 (re-test date: 04/08/2027)
<b>CAS No.:</b>	52-01-7 (unlabeled)
<b>MF:</b>	C <sub>24</sub> H <sub>29</sub> D <sub>3</sub> O <sub>4</sub> S
<b>MW:</b>	419.57
<b>Appearance:</b>	White solid
<b>Purity:</b>	99.9% by HPLC (average of two sample preparations); 99% atom D
<b><sup>1</sup>H-NMR:</b>	Conforms
<b>MS-ESI (+)</b>	Conforms (shows peaks at m/z = 420.22 [M+H] <sup>+</sup> , 341.27 [M-CD <sub>3</sub> C(O)SH+H] <sup>+</sup> )
<b>Storage</b>	Store at -18°C in a dry place away from direct sunlight

Approved by:

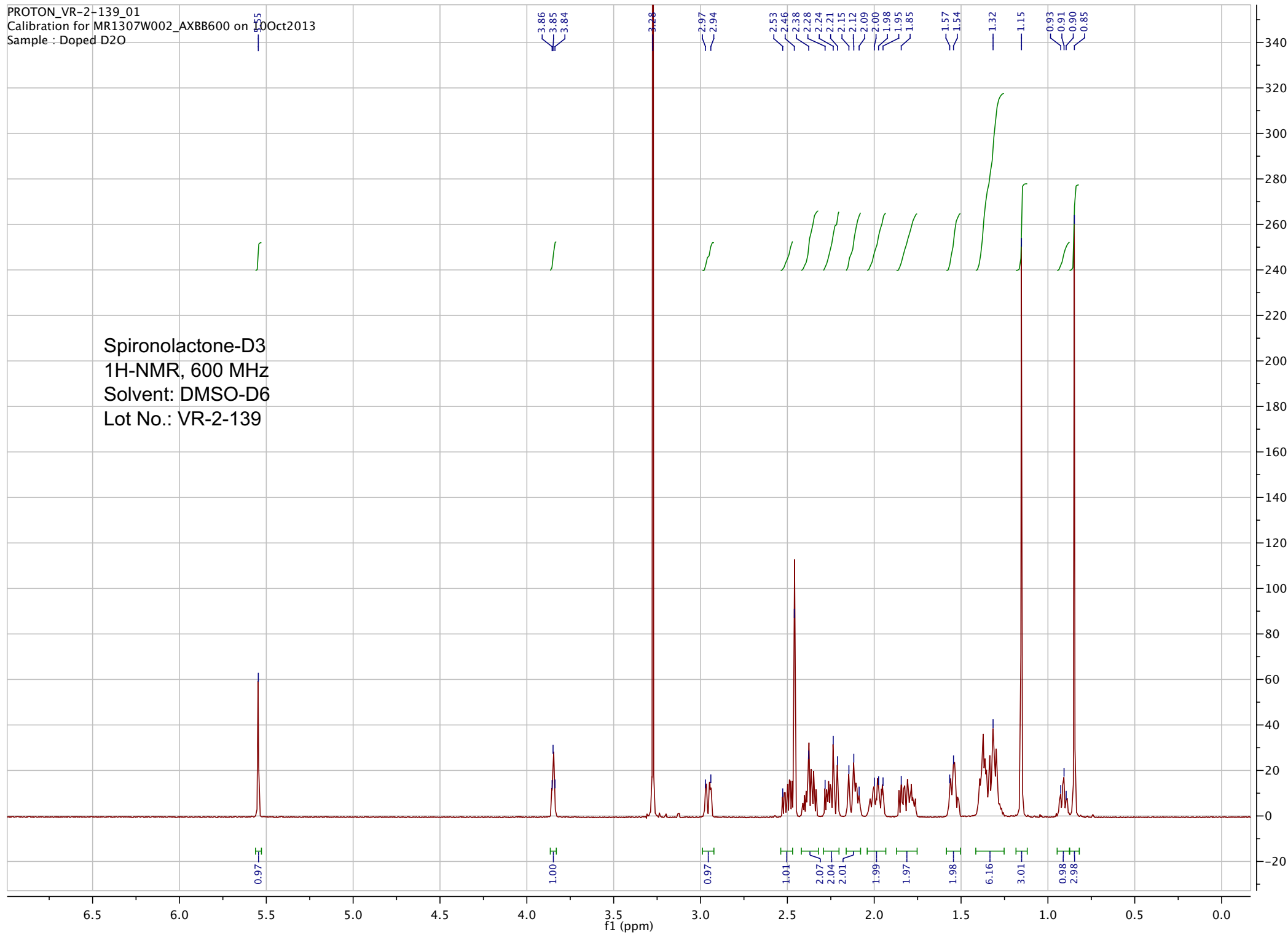
Date: 04/08/2022



Viorica Rusu, QC/QA Manager

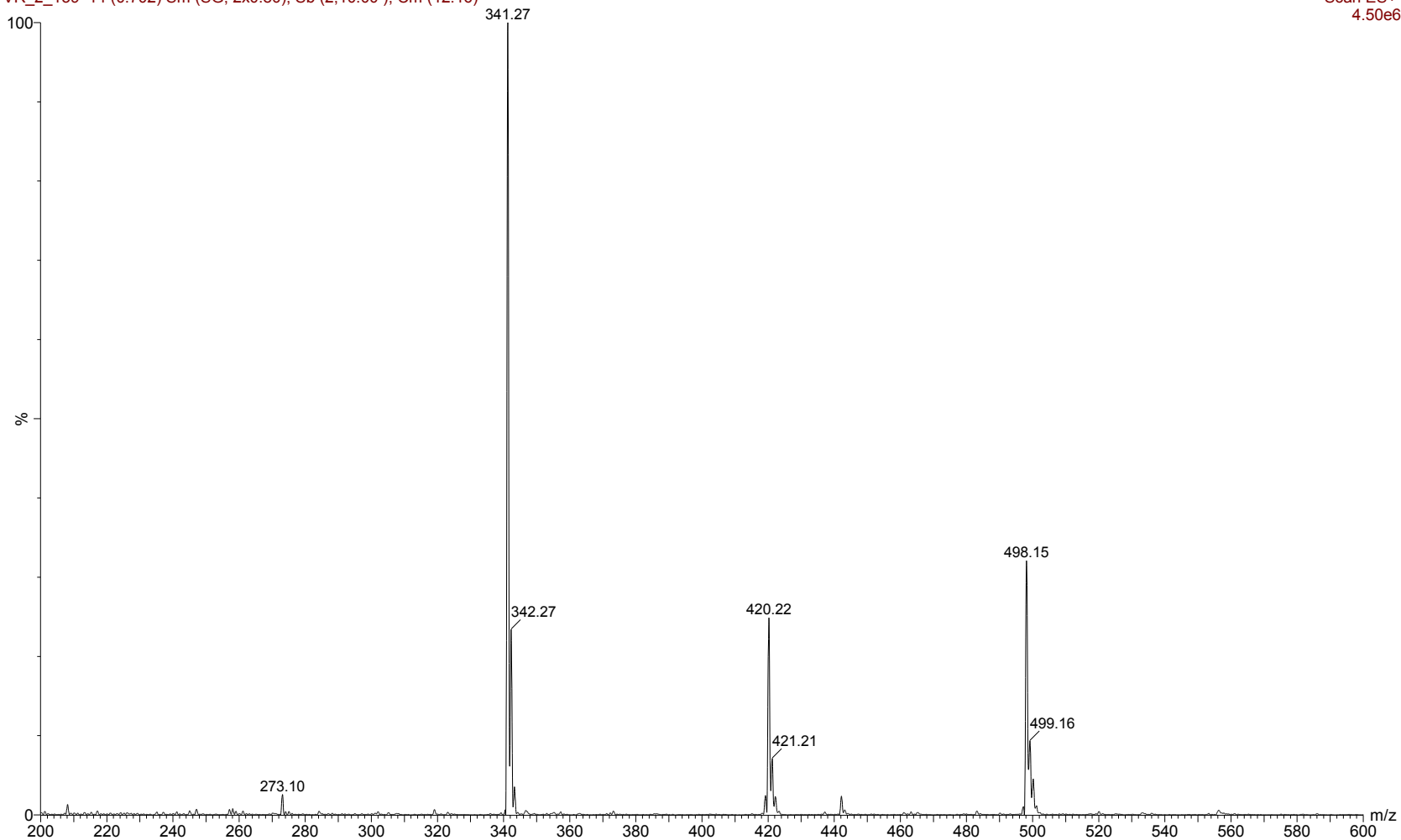
PROTON\_VR-2-139\_01  
Calibration for MR1307W002\_AXBB600 on 10 Oct 2013  
Sample : Doped D2O

Spironolactone-D3  
1H-NMR, 600 MHz  
Solvent: DMSO-D6  
Lot No.: VR-2-139



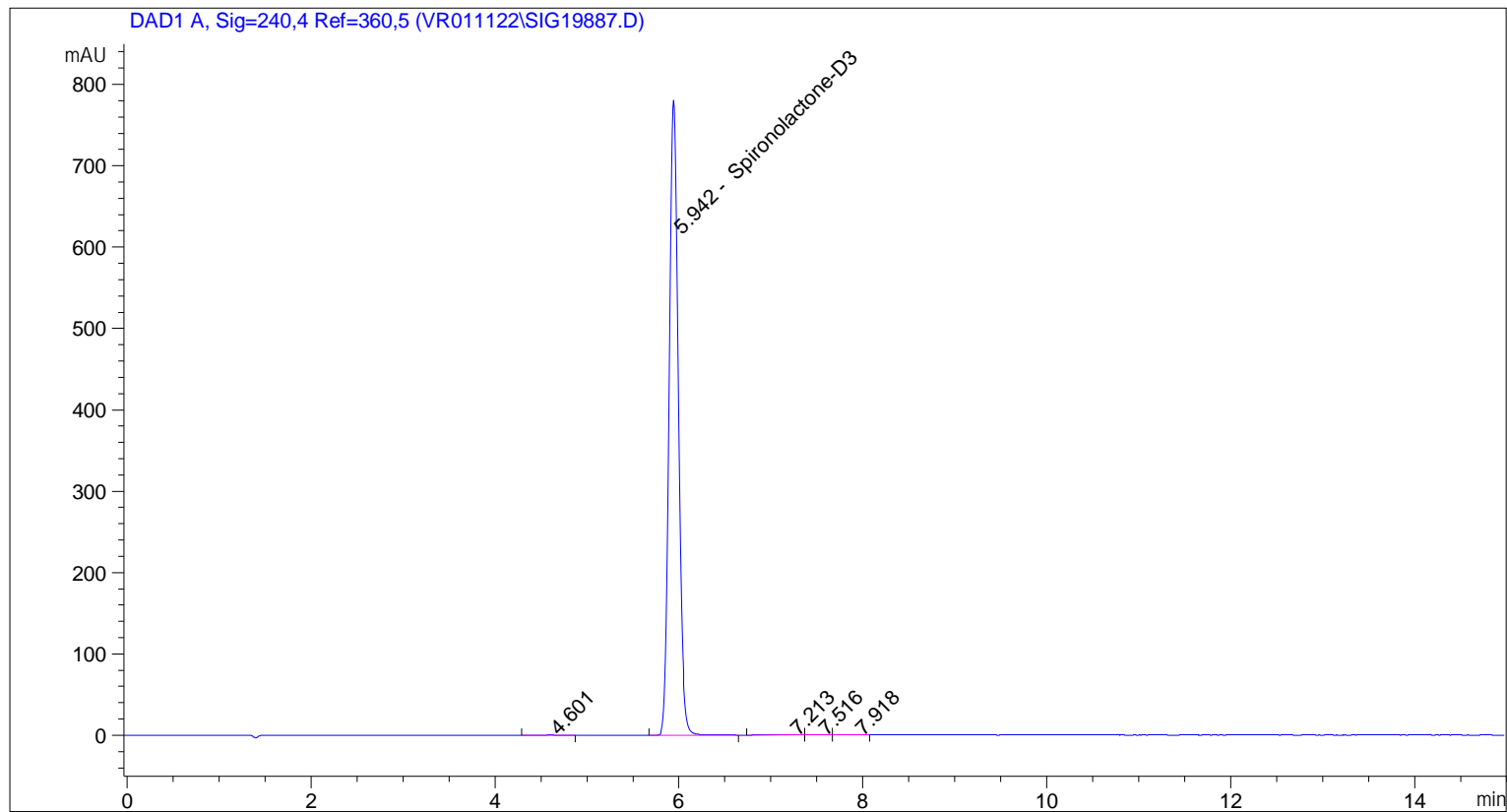
VR\_2\_139 14 (0.702) Sm (SG, 2x0.80); Sb (2,10.00 ); Cm (12:16)

Scan ES+  
4.50e6



ESI-MS spectrum for sample VR-2-139. Shows monoisotopic [M+H]<sup>+</sup> mass.

=====  
Acq. Operator : vrusu  
Acq. Instrument : Instrument 1 Location : Vial 1  
Injection Date : 4/8/2022 3:32:14 PM Inj Volume : 5.0 µl  
Acq. Method : C:\CHEM32\1\METHODS\VR040822\_139.M  
Last changed : 4/8/2022 3:31:21 PM by vrusu  
Analysis Method : C:\CHEM32\1\METHODS\VR041122\_139PM.M  
Last changed : 4/11/2022 8:54:27 AM by vrusu



=====  
Area Percent Report  
=====

Sorted By : Signal  
Calib. Data Modified : 4/11/2022 8:54:09 AM  
Multiplier: : 1.0000  
Dilution: : 1.0000  
Use Multiplier & Dilution Factor with ISTDs

Signal 1: DAD1 A, Sig=240,4 Ref=360,5

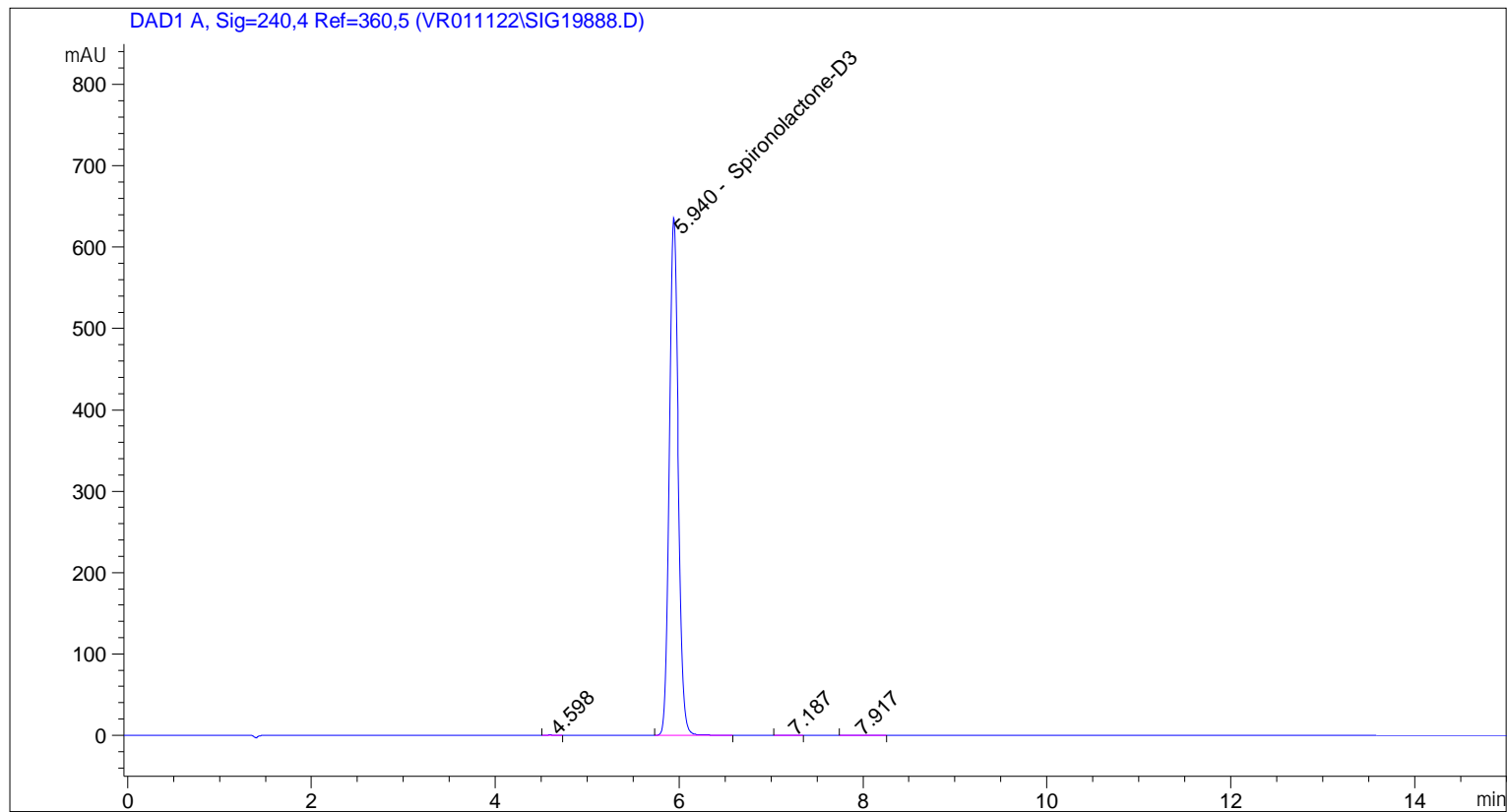
Peak #	RetTime [min]	Type	Width [min]	Area [mAU*s]	Area %	Name
1	4.601	BB	0.1009	3.81374	0.0713	?
2	5.942	BB	0.1058	5338.28857	99.8278	Spironolactone-D3
3	7.213	BV	0.2034	2.80425	0.0524	?
4	7.516	VV	0.1217	8.11368e-1	0.0152	?
5	7.918	VB	0.1400	1.77717	0.0332	?

Totals : 5347.49511

=====

\*\*\* End of Report \*\*\*

=====  
Acq. Operator : vrusu  
Acq. Instrument : Instrument 1 Location : Vial 2  
Injection Date : 4/8/2022 3:49:02 PM Inj Volume : 5.0 µl  
Acq. Method : C:\CHEM32\1\METHODS\VR040822\_139.M  
Last changed : 4/8/2022 3:48:09 PM by vrusu  
Analysis Method : C:\CHEM32\1\METHODS\VR041122\_139PM.M  
Last changed : 4/11/2022 8:54:27 AM by vrusu



=====  
Area Percent Report  
=====

Sorted By : Signal  
Calib. Data Modified : 4/11/2022 8:54:09 AM  
Multiplier: : 1.0000  
Dilution: : 1.0000  
Use Multiplier & Dilution Factor with ISTDs

Signal 1: DAD1 A, Sig=240,4 Ref=360,5

Peak #	RetTime [min]	Type	Width [min]	Area [mAU*s]	Area %	Name
1	4.598	VB	0.0830	2.19946	0.0506	?
2	5.940	BV	0.1056	4343.49023	99.8724	Spirolactone-D3
3	7.187	BB	0.1398	9.46426e-1	0.0218	?
4	7.917	BB	0.1644	2.40134	0.0552	?

Totals : 4349.03745

=====

\*\*\* End of Report \*\*\*