

<b>Name:</b>	<b>Betamethasone-17-Propionate</b>
<b>Lot#:</b>	VR-2-221
<b>Test Date:</b>	02/13/2024 (re-test date: 02/13/2029)
<b>CAS No.:</b>	5534-13-4
<b>MF:</b>	C <sub>25</sub> H <sub>33</sub> FO <sub>6</sub>
<b>MW:</b>	448.52
<b>Appearance:</b>	White Solid
<b>Purity:</b>	99.3% by HPLC (average of two sample preparations)
<b><sup>1</sup>H-NMR:</b>	Conforms
<b>MS-ESI (+)</b>	Conforms (shows peaks at m/z = 429.24 [M-HF+H] <sup>+</sup> , 449.25 [M+H] <sup>+</sup> and 471.23 [M+Na] <sup>+</sup> )
<b>Storage</b>	Store at 0-5°C in a dry place away from direct sunlight

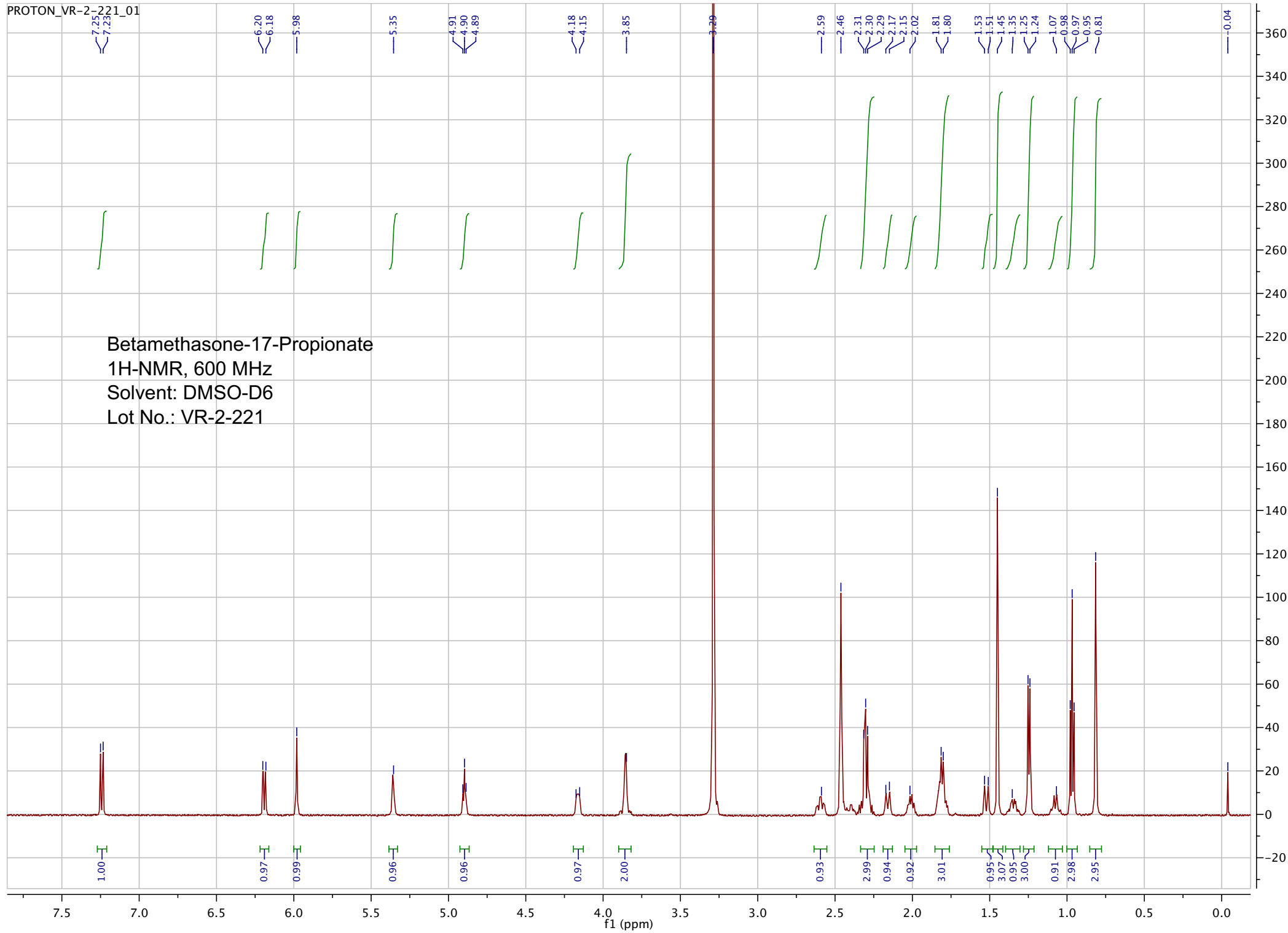
Approved by:

Date: 02/14/2024



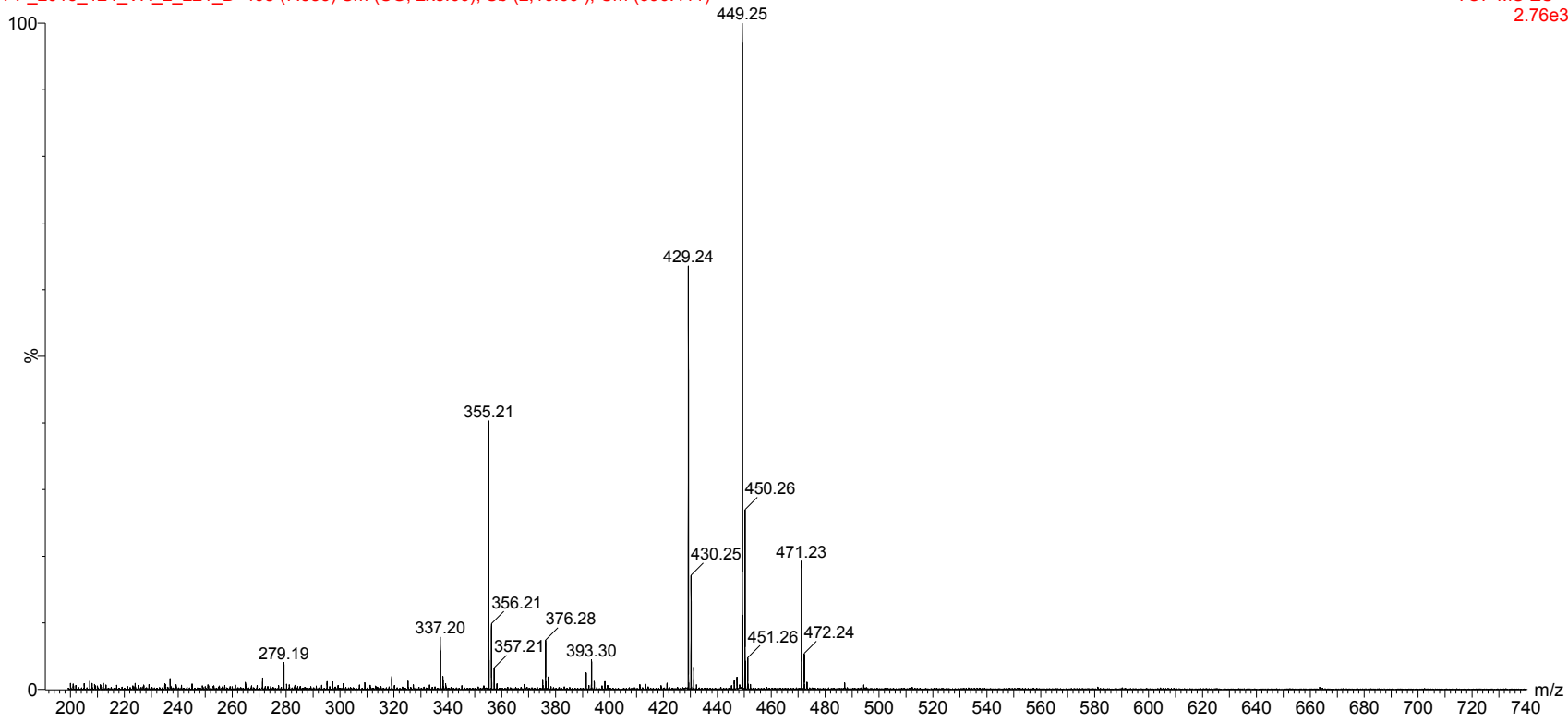
Viorica Rusu, QC/QA Manager

Betamethasone-17-Propionate  
1H-NMR, 600 MHz  
Solvent: DMSO-D6  
Lot No.: VR-2-221



PP\_2018\_124\_VR\_2\_221\_B 408 (7.583) Sm (SG, 2x5.00); Sb (2,10.00 ); Cm (396.411)

TOF MS ES+  
2.76e3



ESI-MS spectrum for sample VR-2-221. Shows monoisotopic  $[M+H]^+$  mass.

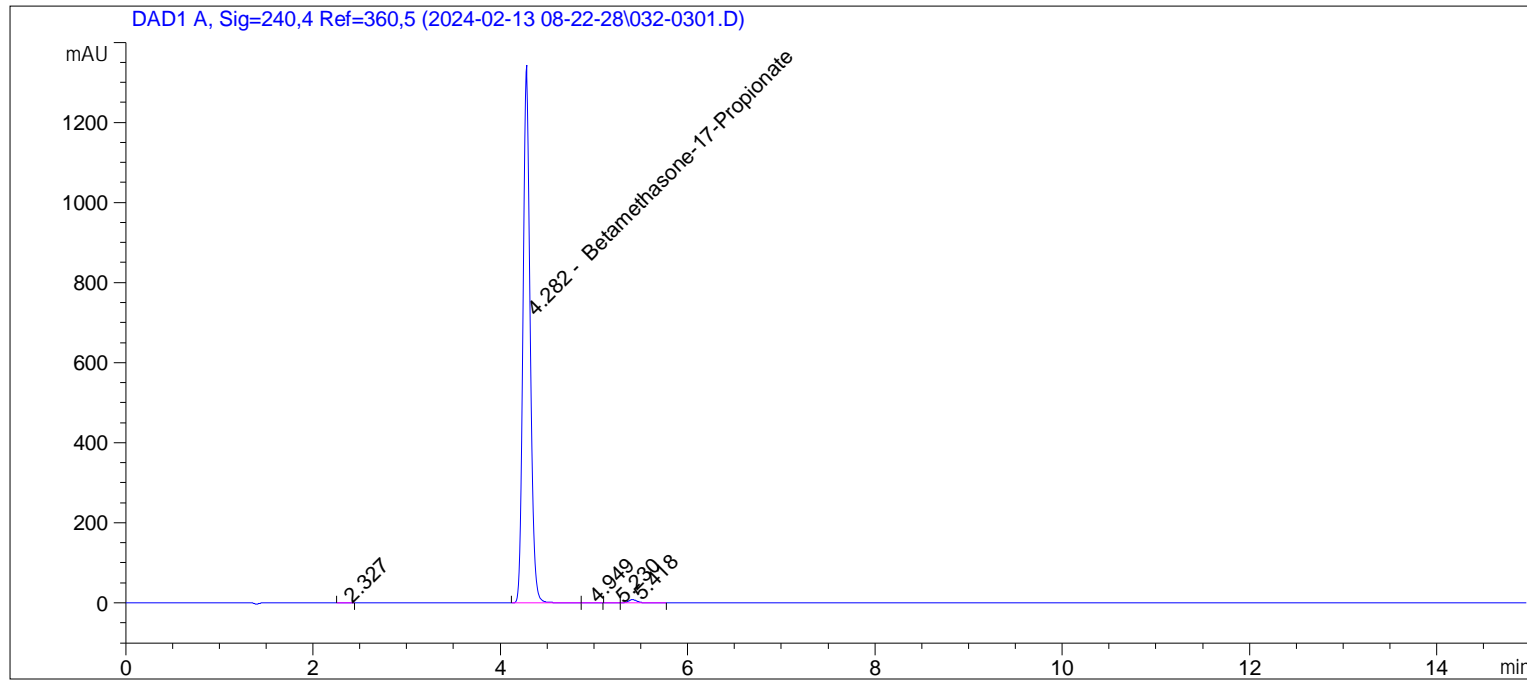
Sample Name: VR-2-221 spl-2

```

=====
Acq. Operator   : vrusu                               Seq. Line :    3
Acq. Instrument : Instrument 1                         Location  : Vial 32
Injection Date  : 2/13/2024 8:56:14 AM                Inj       :    1
                                                    Inj Volume: 5.0 µl

Acq. Method     : C:\CHEM32\1\DATA\2024-02-13 08-22-28\VR021324_221.M
Last changed    : 2/13/2024 8:22:21 AM by vrusu
Analysis Method : C:\CHEM32\1\METHODS\VR021324_221PM.M
Last changed    : 2/13/2024 9:46:33 AM by vrusu
=====

```



```

=====
                          Area Percent Report
=====

```

```

Sorted By           :      Signal
Calib. Data Modified :      2/13/2024 9:45:31 AM
Multiplier:         :      1.0000
Dilution:           :      1.0000
Use Multiplier & Dilution Factor with ISTDs

```

Signal 1: DAD1 A, Sig=240,4 Ref=360,5

Peak #	RetTime [min]	Type	Width [min]	Area [mAU*s]	Area %	Name
1	2.327	BB	0.0705	2.25653	0.0302	?
2	4.282	BV	0.0864	7416.95557	99.2518	Betamethasone-17-Propionate
3	4.949	VB	0.1047	2.61622	0.0350	?
4	5.230	BV	0.0806	1.32700	0.0178	?
5	5.418	VB	0.0980	49.70994	0.6652	?

Totals : 7472.86526

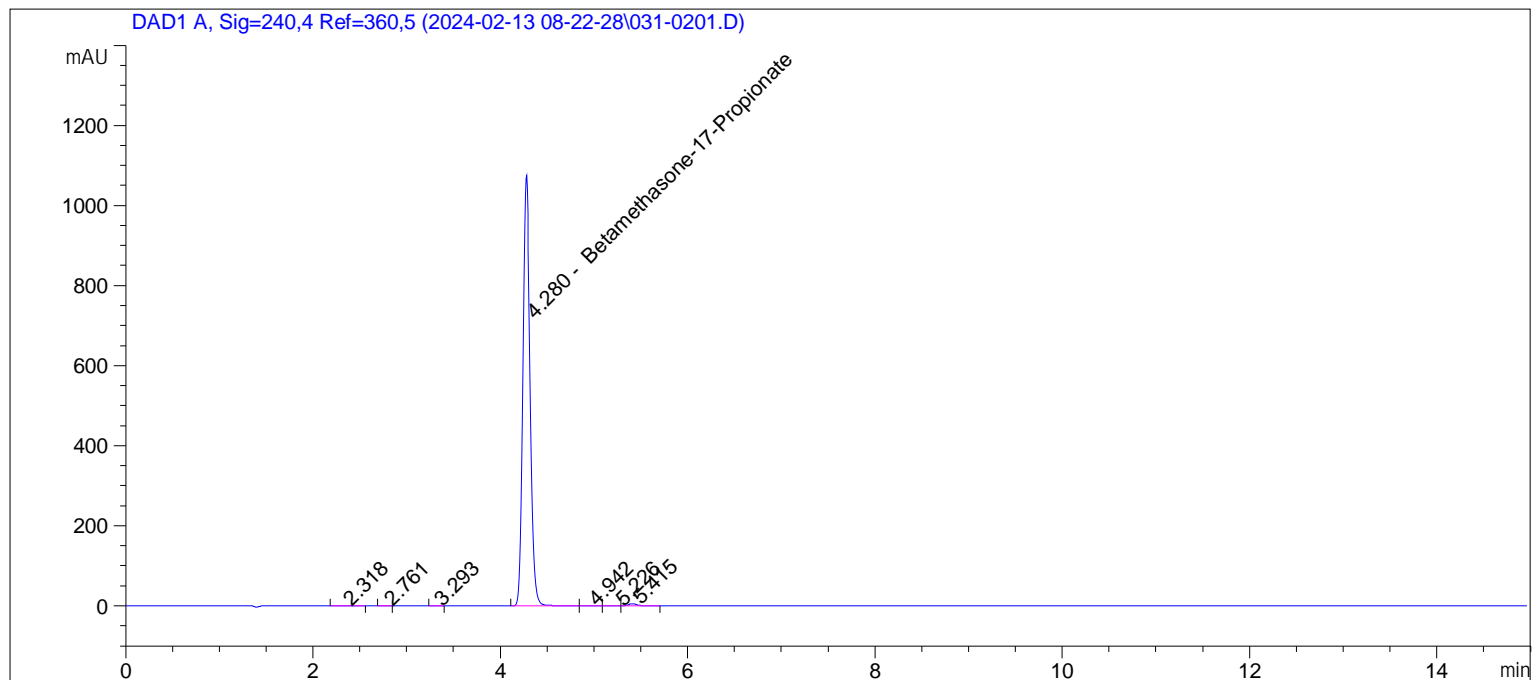
\*\*\* End of Report \*\*\*

Sample Name: VR-2-221

```

=====
Acq. Operator   : vrusu                               Seq. Line :    2
Acq. Instrument : Instrument 1                         Location  : Vial 31
Injection Date  : 2/13/2024 8:39:56 AM                Inj       :    1
                                                    Inj Volume: 5.0 µl

Acq. Method     : C:\CHEM32\1\DATA\2024-02-13 08-22-28\VR021324_221.M
Last changed    : 2/13/2024 8:22:21 AM by vrusu
Analysis Method : C:\CHEM32\1\METHODS\VR021324_221PM.M
Last changed    : 2/13/2024 9:46:33 AM by vrusu
=====
    
```



Area Percent Report

```

Sorted By           :      Signal
Calib. Data Modified :      2/13/2024 9:45:31 AM
Multiplier          :      1.0000
Dilution            :      1.0000
Use Multiplier & Dilution Factor with ISTDs
    
```

Signal 1: DAD1 A, Sig=240,4 Ref=360,5

Peak #	RetTime [min]	Type	Width [min]	Area [mAU*s]	Area %	Name
1	2.318	BB	0.0900	3.40366	0.0575	?
2	2.761	BB	0.0657	6.14738e-1	0.0104	?
3	3.293	BB	0.0610	4.21333e-1	7.115e-3	?
4	4.280	BB	0.0837	5882.85791	99.3405	Betamethasone-17-Propionate
5	4.942	BB	0.0804	1.29208	0.0218	?
6	5.226	BV	0.0872	1.33127	0.0225	?
7	5.415	VB	0.0982	31.99088	0.5402	?

Totals : 5921.91187

Sample Name: VR-2-221

```
=====
Acq. Operator   : vrusu                               Seq. Line :    2
Acq. Instrument : Instrument 1                         Location  : Vial 31
Injection Date  : 2/13/2024 8:39:56 AM                Inj       :    1
                                                    Inj Volume: 5.0 µl
Acq. Method     : C:\CHEM32\1\DATA\2024-02-13 08-22-28\VR021324_221.M
Last changed    : 2/13/2024 8:22:21 AM by vrusu
Analysis Method : C:\CHEM32\1\METHODS\VR021324_221PM.M
Last changed    : 2/13/2024 9:46:33 AM by vrusu
=====
```

```
=====
*** End of Report ***
```