

<b>Name:</b>	<b>Bezafibrate Acyl Glucuronide</b>
<b>Lot#:</b>	GR-15-165
<b>Test Date:</b>	02/05/2024 (re-test date: 02/05/2029)
<b>CAS No.:</b>	72156-77-5
<b>MF:</b>	C <sub>25</sub> H <sub>28</sub> ClNO <sub>10</sub>
<b>MW:</b>	537.95
<b>Appearance:</b>	White solid
<b>Purity:</b>	91.9% by HPLC (average of two sample preparations)
<b><sup>1</sup>H-NMR:</b>	Conforms (contains 2% of ACN)
<b>MS-ESI (-)</b>	Conforms (shows peaks at m/z = 436.13, 438.13 [M-H] <sup>-</sup> ; exhibits the expected isotope pattern for mono-chloro compounds)
<b>Storage</b>	Long term store at -20°C in a dry place away from direct sunlight

Approved by:

Date: 02/07/2024

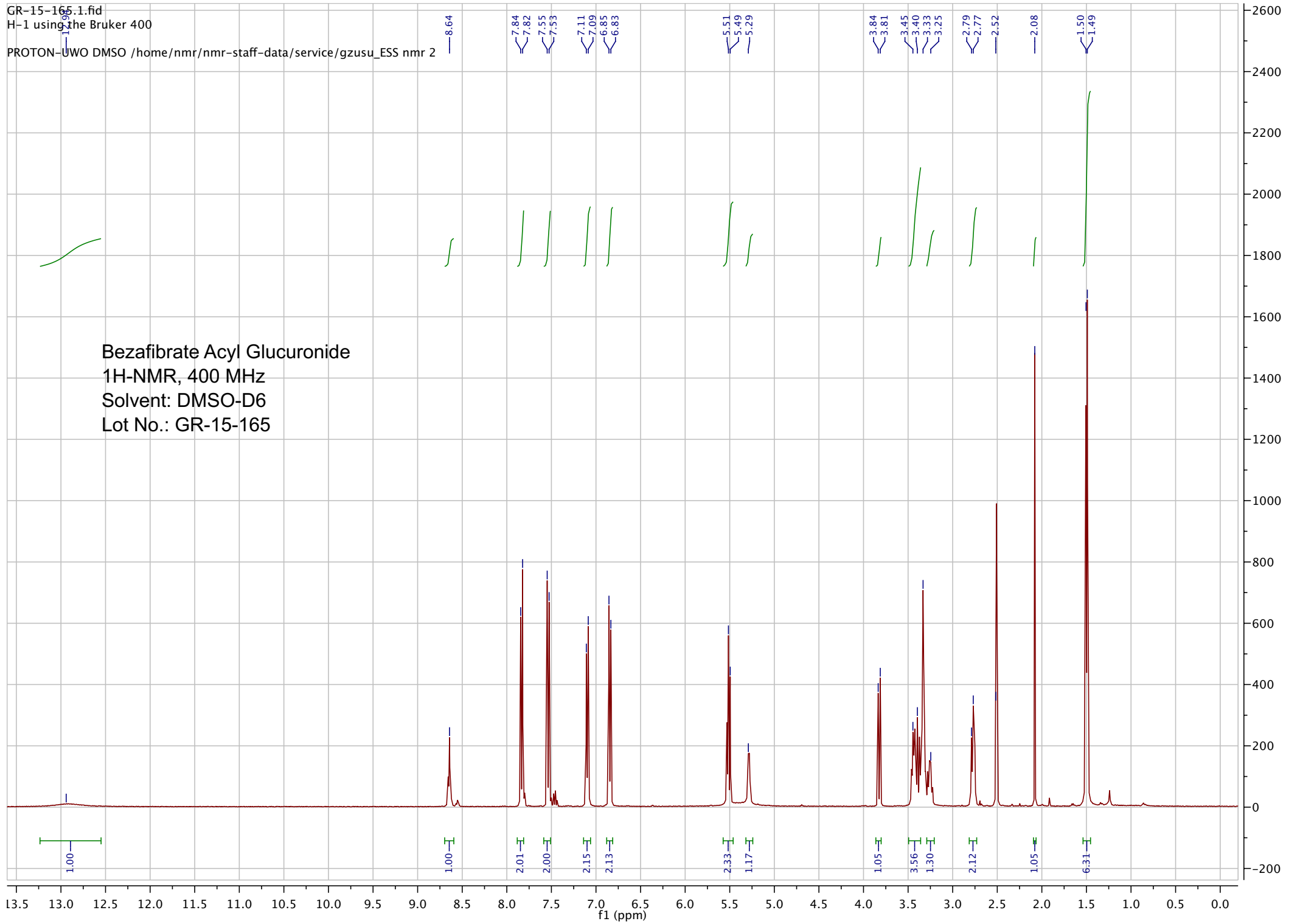


Viorica Rusu, QC/QA Manager

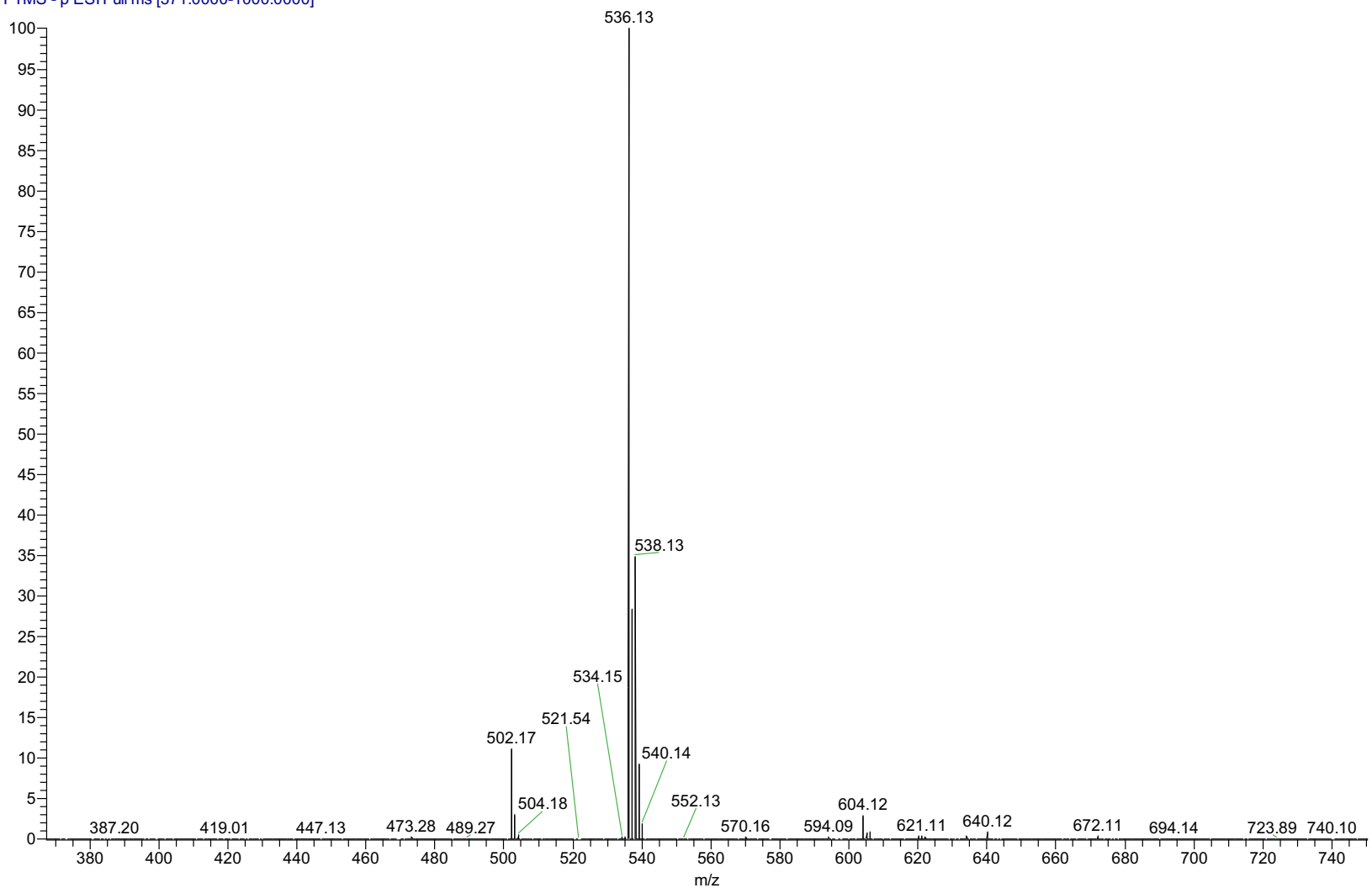
GR-15-165.1.fid  
H-1 using the Bruker 400

PROTON-UWO DMSO /home/nmr/nmr-staff-data/service/gzusu\_ESS nmr 2

Bezafibrate Acyl Glucuronide  
1H-NMR, 400 MHz  
Solvent: DMSO-D6  
Lot No.: GR-15-165



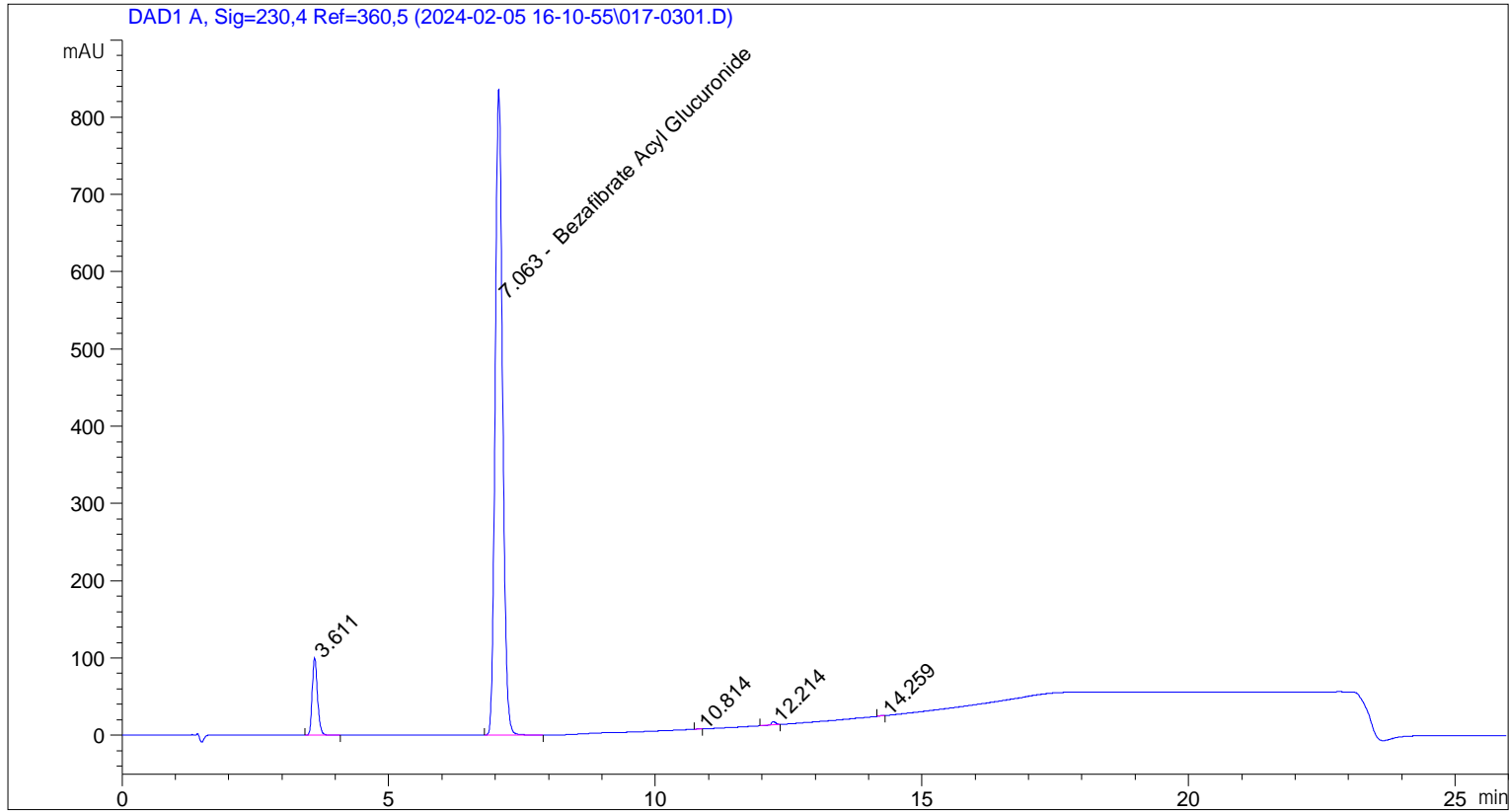
pp\_2021\_001\_GR\_15\_165\_1#1681-1701 RT: 3.77-3.82 AV: 21 NL:  
T: FTMS - p ESI Full ms [371.0000-1000.0000]



ESI-MS spectrum for sample GR-15-165. Shows monoisotopic [M-H]<sup>-</sup> mass.

```
=====
Acq. Operator   : vrusu                               Seq. Line :    3
Acq. Instrument : Instrument 1                         Location  : Vial 17
Injection Date  : 2/5/2024 5:07:03 PM                 Inj       :    1
                                                    Inj Volume: 10.0 µl

Acq. Method     : C:\CHEM32\1\DATA\2024-02-05 16-10-55\VR020524_165.M
Last changed    : 2/5/2024 4:09:26 PM by vrusu
Analysis Method : C:\CHEM32\1\METHODS\VR020624_165_PM.M
Last changed    : 2/6/2024 7:36:49 AM by vrusu
=====
```



=====  
Area Percent Report  
=====

```
Sorted By           :      Signal
Calib. Data Modified :      2/6/2024 7:36:19 AM
Multiplier:         :      1.0000
Dilution:           :      1.0000
Do not use Multiplier & Dilution Factor with ISTDs
```

Signal 1: DAD1 A, Sig=230,4 Ref=360,5

Peak #	RetTime [min]	Type	Width [min]	Area [mAU*s]	Area %	Name
1	7.063	BB	0.1492	8119.82227	91.8709	Bezafibrate Acyl Glucuronide

Totals :                      8119.82227  91.8709

Uncalibrated Peaks:

Sample Name: GR-15-165 spl-2

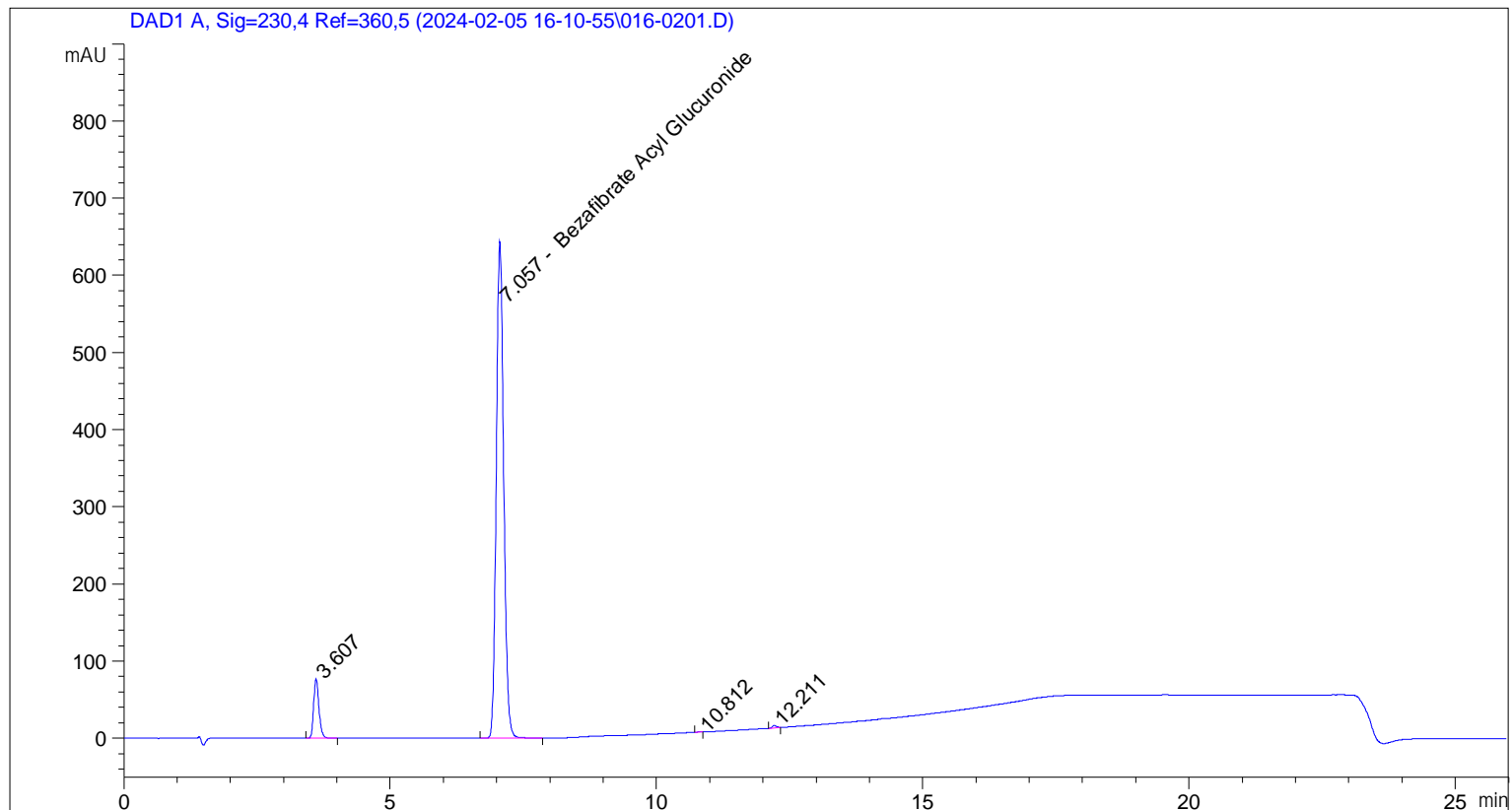
Peak #	RetTime [min]	Type	Width [min]	Area [mAU*s]	Area %	Name
1	3.611	BB	0.1065	689.48309	7.8011	?
2	10.814	BB	0.0672	3.09517	0.0350	?
3	12.214	BB	0.0858	23.21745	0.2627	?
4	14.259	BB	0.0685	2.67951	0.0303	?

Uncalib. totals :                   718.47522   8.1291

=====  
\*\*\* End of Report \*\*\*

```
=====
Acq. Operator   : vrusu                               Seq. Line :    2
Acq. Instrument : Instrument 1                         Location  : Vial 16
Injection Date  : 2/5/2024 4:39:38 PM                Inj       :    1
                                                    Inj Volume: 10.0 µl

Acq. Method     : C:\CHEM32\1\DATA\2024-02-05 16-10-55\VR020524_165.M
Last changed    : 2/5/2024 4:09:26 PM by vrusu
Analysis Method : C:\CHEM32\1\METHODS\VR020624_165_PM.M
Last changed    : 2/6/2024 7:36:49 AM by vrusu
=====
```



=====  
 Area Percent Report  
 =====

```
Sorted By       : Signal
Calib. Data Modified : 2/6/2024 7:36:19 AM
Multiplier:     : 1.0000
Dilution:      : 1.0000
Do not use Multiplier & Dilution Factor with ISTDs
```

Signal 1: DAD1 A, Sig=230,4 Ref=360,5

Peak #	RetTime [min]	Type	Width [min]	Area [mAU*s]	Area %	Name
1	7.057	BB	0.1510	6233.47852	91.9002	Bezafibrate Acyl Glucuronide

Totals : 6233.47852 91.9002

Uncalibrated Peaks:

Sample Name: GR-15-165

Peak #	RetTime [min]	Type	Width [min]	Area [mAU*s]	Area %	Name
1	3.607	BB	0.1065	530.18738	7.8166	?
2	10.812	BB	0.0662	2.38161	0.0351	?
3	12.211	BB	0.0862	16.83020	0.2481	?
Uncalib. totals :				549.39919	8.0998	

=====  
\*\*\* End of Report \*\*\*