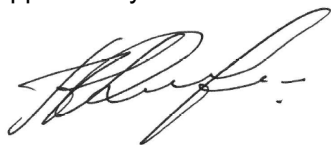


Name:	Glycolithocholic Acid-D4
Lot#:	GR-19-073
Test Date:	02/14/2024 (re-test date: 02/14/2029)
CAS No.:	2044276-16-4
MF:	C ₂₆ H ₃₉ D ₄ NO ₄
MW:	437.65
Appearance:	White solid
Purity:	>97% by NMR; TLC – one spot (eluent 40% acetone in hexanes); 99% atom D
¹H-NMR:	Conforms
MS-ESI (-)	Conforms (shows peak at m/z = 436.34 [M-H] ⁻)
Storage	Store at -18°C in a dry place away from direct sunlight

Approved by:

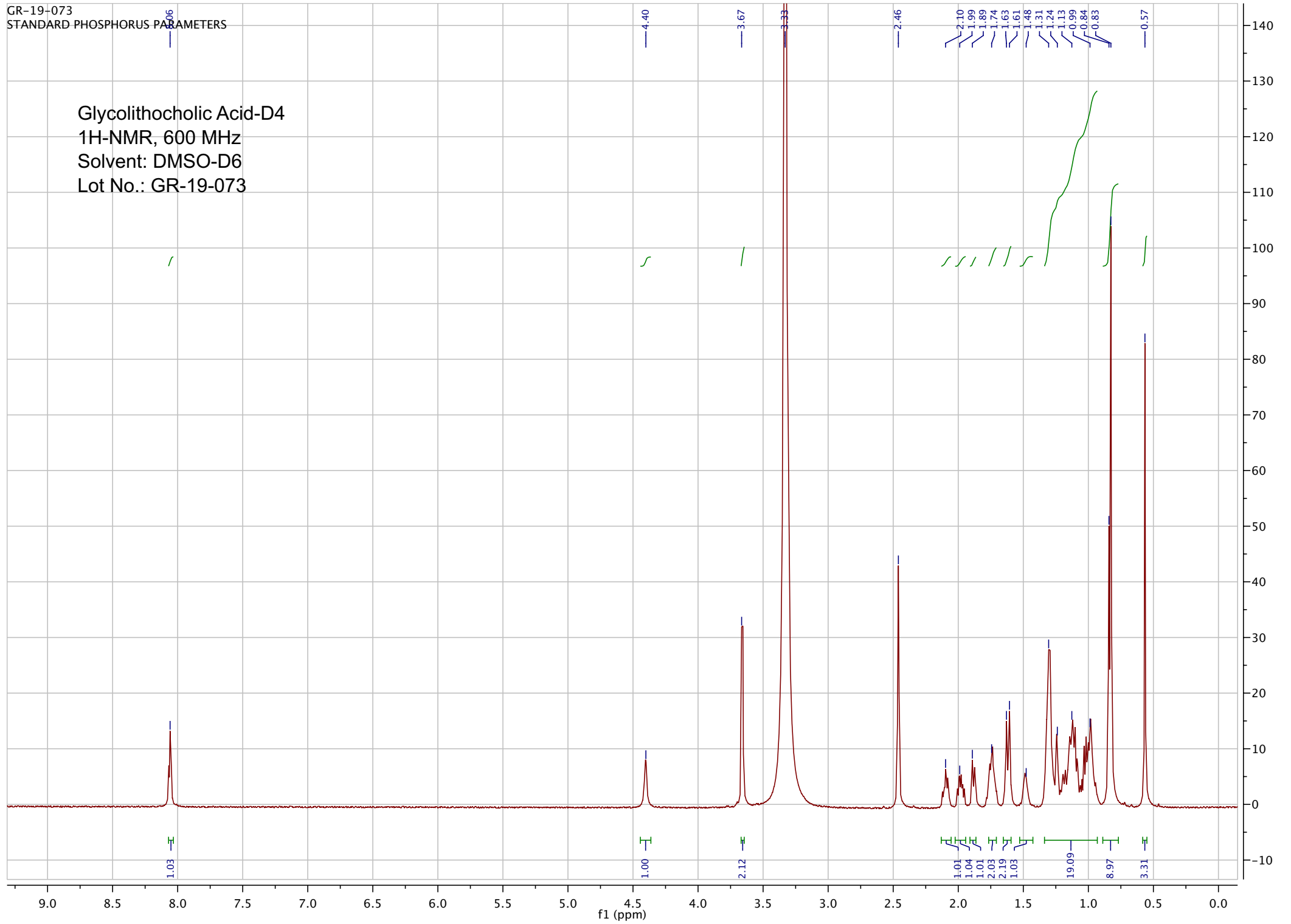
Date: 02/14/2024



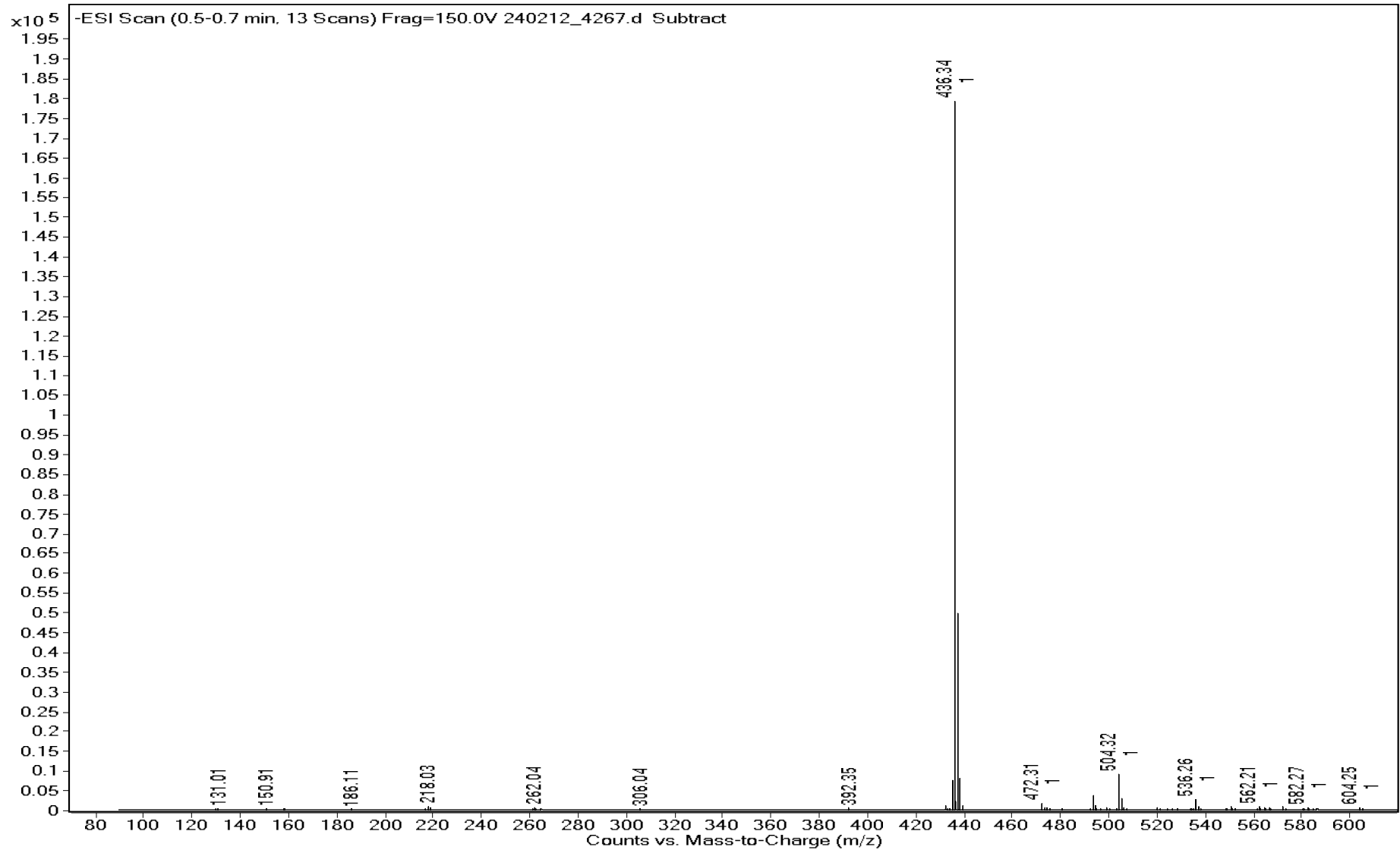
Viorica Rusu, QC/QA Manager

GR-19-073
STANDARD PHOSPHORUS PARAMETERS

Glycolithocholic Acid-D4
1H-NMR, 600 MHz
Solvent: DMSO-D6
Lot No.: GR-19-073



Sample Name	GR-19-073	Data File	240212_4267.d	Acq Method	HRMS_Negative.m
DA Method	AIMS_Accurate_Mass.m	Instrument	Agilent 6538 UHD	Acq Date, Time	12/02/2024 1:44:08 PM
Comment	ESI-				



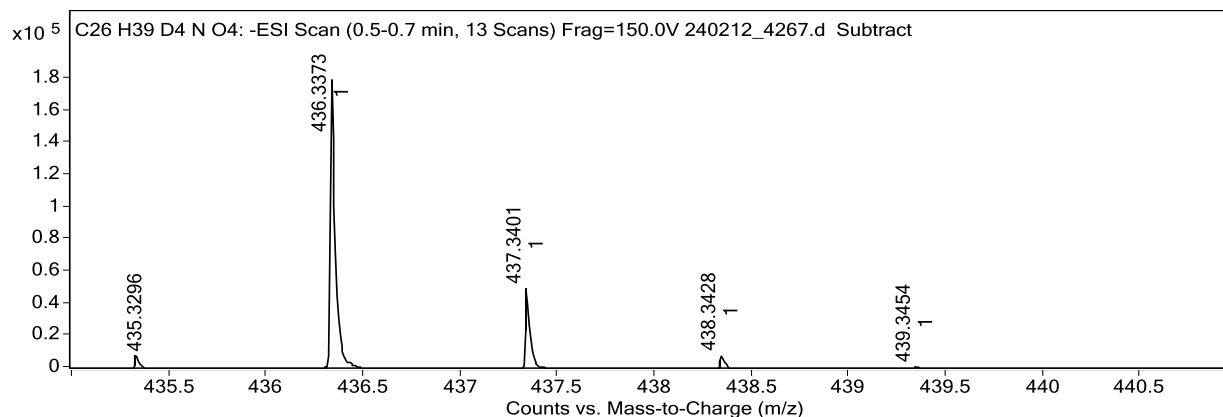
Sample Name	GR-19-073	Data File	240212_4267.d
Acq Method	HRMS_Negative.m	DA Method	AIMS_Accurate_Mass.m
Instrument	Agilent 6538 UHD	Acq Date, Time	12/02/2024 1:44:08 PM
Comment	ESI-		

Target Ion Species

Ion Species	m/z	Ionic Formula
(M-H) ⁻	436.3373	C26 H38 D4 N O4

MFG Calculator Results

Target m/z	Ionic Formula	Calc m/z	+/- (mDa)	+/- (ppm)	DBE	MFG Score
436.3373	C26 H38 D4 N O4	436.3370	0.3	0.7	6.0	99.43
436.3373	C27 H34 D4 N5	436.3384	-1.1	-2.5	11.0	94.93
436.3373	C22 H34 D4 N7 O2	436.3344	2.9	6.6	7.0	82.94
436.3373	C21 H38 D4 N3 O6	436.3330	4.3	9.9	2.0	69.62



Predicted Isotope Match Table

Isotope	m/z	Calc m/z	Diff (mDa)	Abund (%)	Calc Abund (%)	+/-
1	436.3373	436.3370	0.3	100.0	100.0	0.0
2	437.3401	437.3404	-0.3	27.9	29.1	1.2
3	438.3428	438.3433	-0.5	4.5	4.9	0.4

x10⁵ -ESI Scan (0.5-0.7 min, 13 Scans) Frag=150.0V 240212_4267.d Subtract

