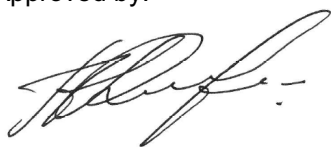


<b>Name:</b>	<b>Lansoprazole Sulfone-D4</b>
<b>Lot#:</b>	GR-9-083
<b>Test Date:</b>	01/14/2022 (re-test date: 01/14/2027)
<b>CAS No.:</b>	1184999-77-6
<b>MF:</b>	C <sub>18</sub> H <sub>10</sub> D <sub>4</sub> F <sub>3</sub> N <sub>3</sub> O <sub>3</sub> S
<b>MW:</b>	389.38
<b>Appearance:</b>	White Solid
<b>Purity:</b>	99.9% by HPLC (average of two sample preparations); 99% atom D
<b><sup>1</sup>H-NMR:</b>	Conforms
<b>MS-ESI (+)</b>	Conforms (shows peak at m/z = 390.10 [M+H] <sup>+</sup> )
<b>Storage</b>	Store at -18°C in a dry place away from direct sunlight

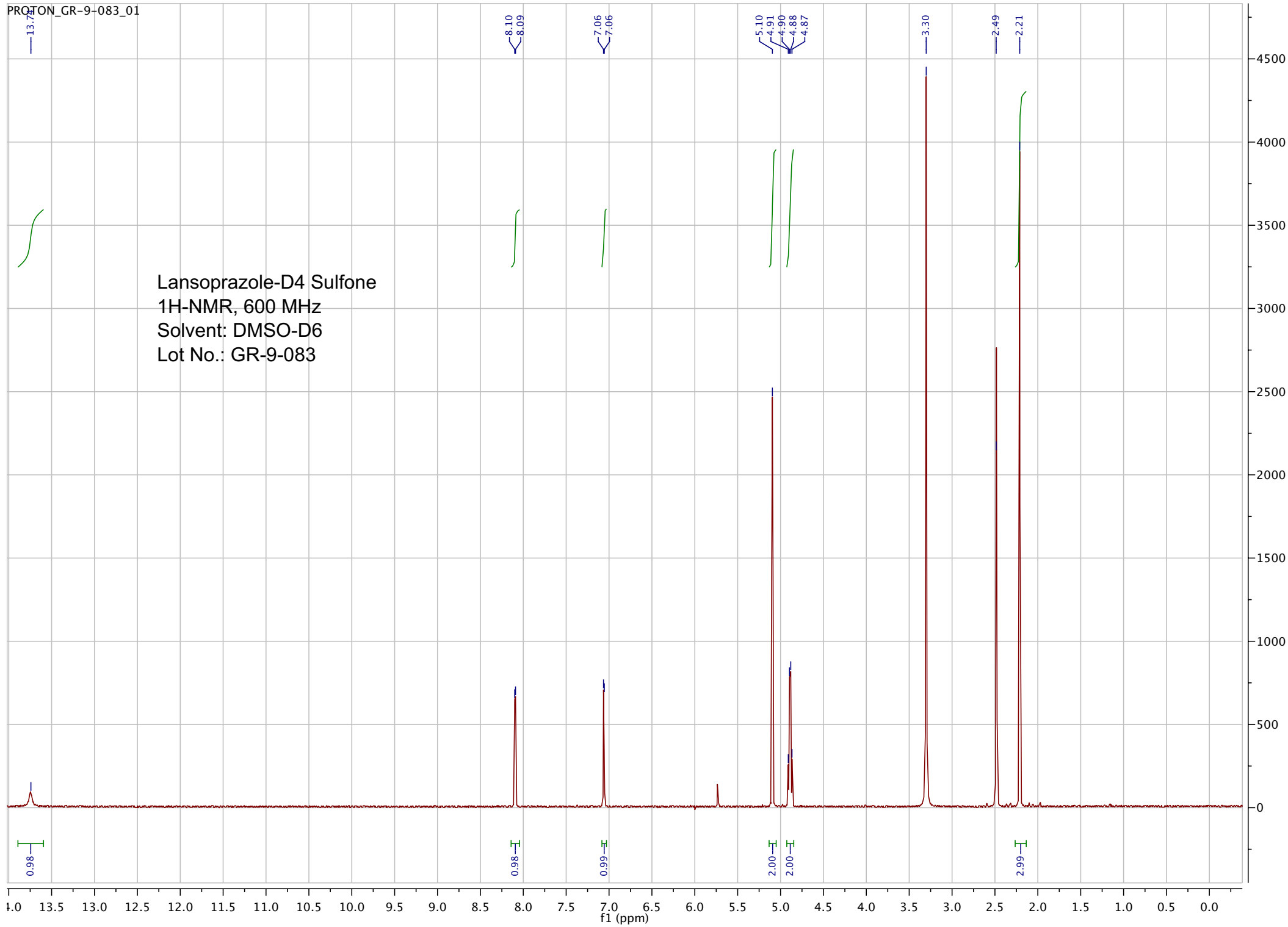
Approved by:

Date: 01/31/2024

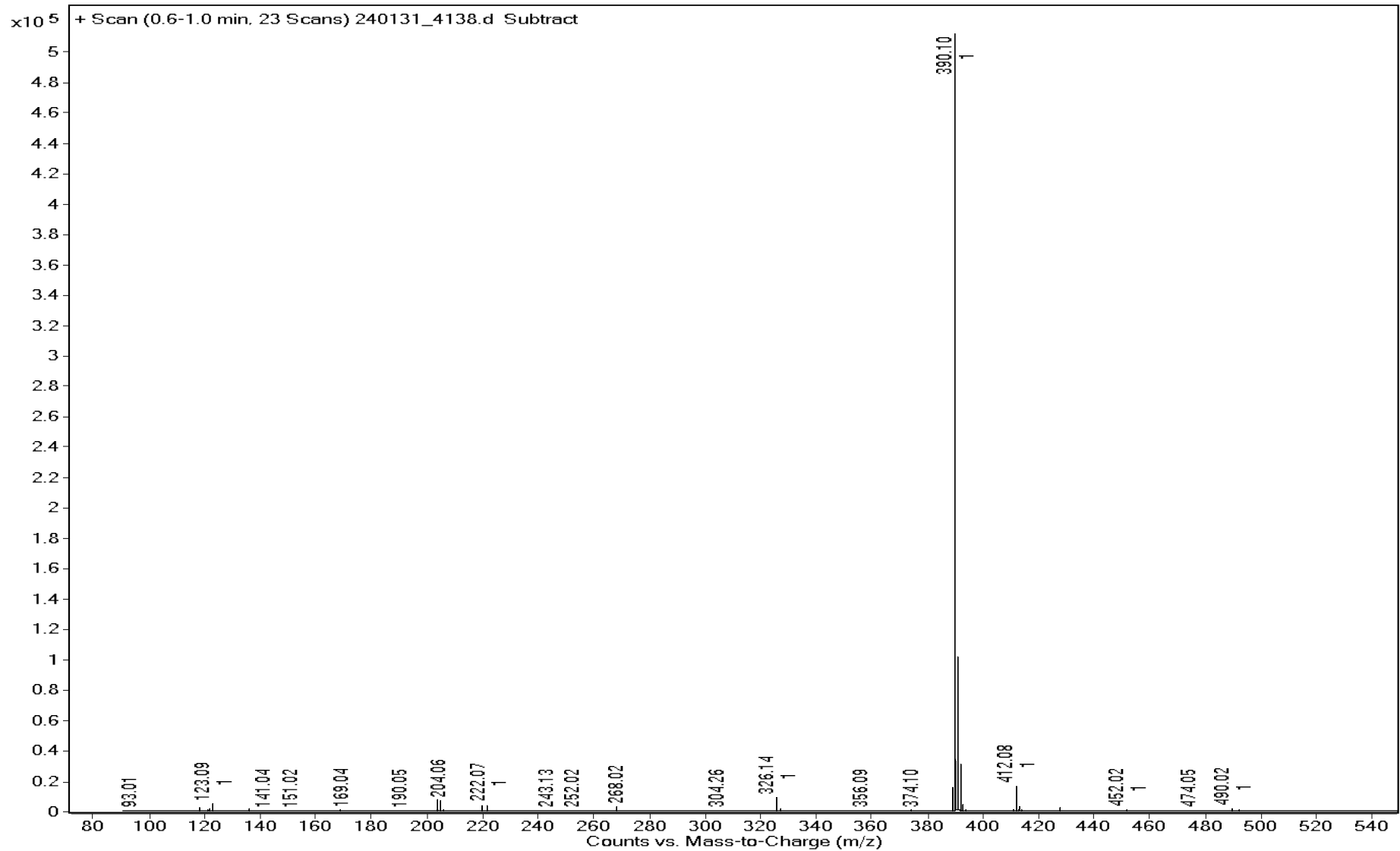


Viorica Rusu, QC/QA Manager

Lansoprazole-D4 Sulfone  
1H-NMR, 600 MHz  
Solvent: DMSO-D6  
Lot No.: GR-9-083



<b>Sample Name</b>	GR-9-083	<b>Data File</b>	240131_4138.d	<b>Acq Method</b>	HRMS.m
<b>DA Method</b>	AIMS_Accurate_Mass.m	<b>Instrument</b>	Agilent 6538 UHD	<b>Acq Date, Time</b>	31/01/2024 12:16:43 PM
<b>Comment</b>	ESI+				



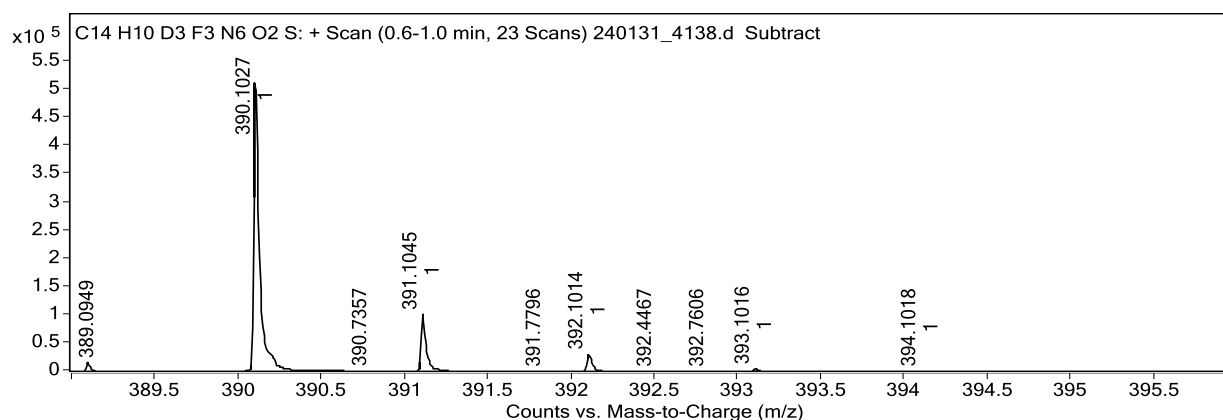
<b>Sample Name</b>	GR-9-083	<b>Data File</b>	240131_4138.d
<b>Acq Method</b>	HRMS.m	<b>DA Method</b>	AIMS_Accurate_Mass.m
<b>Instrument</b>	Agilent 6538 UHD	<b>Acq Date, Time</b>	31/01/2024 12:16:43 PM
<b>Comment</b>	ESI+		

### Target Ion Species

Ion Species	m/z	Ionic Formula
(M+H) <sup>+</sup>	390.1027	C14 H11 D3 F3 N6 O2 S

### MFG Calculator Results

Target m/z	Ionic Formula	Calc m/z	+/- (mDa)	+/- (ppm)	DBE	MFG Score
390.1027	C14 H11 D3 F3 N6 O2 S	390.1034	-0.7	-1.8	10.0	97.33
390.1027	C16 H11 D4 F3 N3 O3 S	390.1032	-0.5	-1.3	10.0	97.24
390.1027	C12 H11 D2 F3 N9 O S	390.1036	-0.9	-2.3	10.0	96.44
390.1027	C13 H15 D3 F3 N2 O6 S	390.1020	0.7	1.8	5.0	94.84
390.1027	C11 H15 D2 F3 N5 O5 S	390.1023	0.4	1.0	5.0	94.22
390.1027	C12 H7 D4 F3 N9 O S	390.1005	2.2	5.6	11.0	87.17
390.1027	C10 H19 D2 F3 N O9 S	390.1009	1.8	4.6	0.0	81.80
390.1027	C16 H15 D2 F3 N3 O3 S	390.1063	-3.6	-9.2	9.0	71.81
390.1027	C18 H15 D3 F3 O4 S	390.1061	-3.4	-8.7	9.0	71.59
390.1027	C11 H11 D4 F3 N5 O5 S	390.0992	3.5	9.0	6.0	71.19

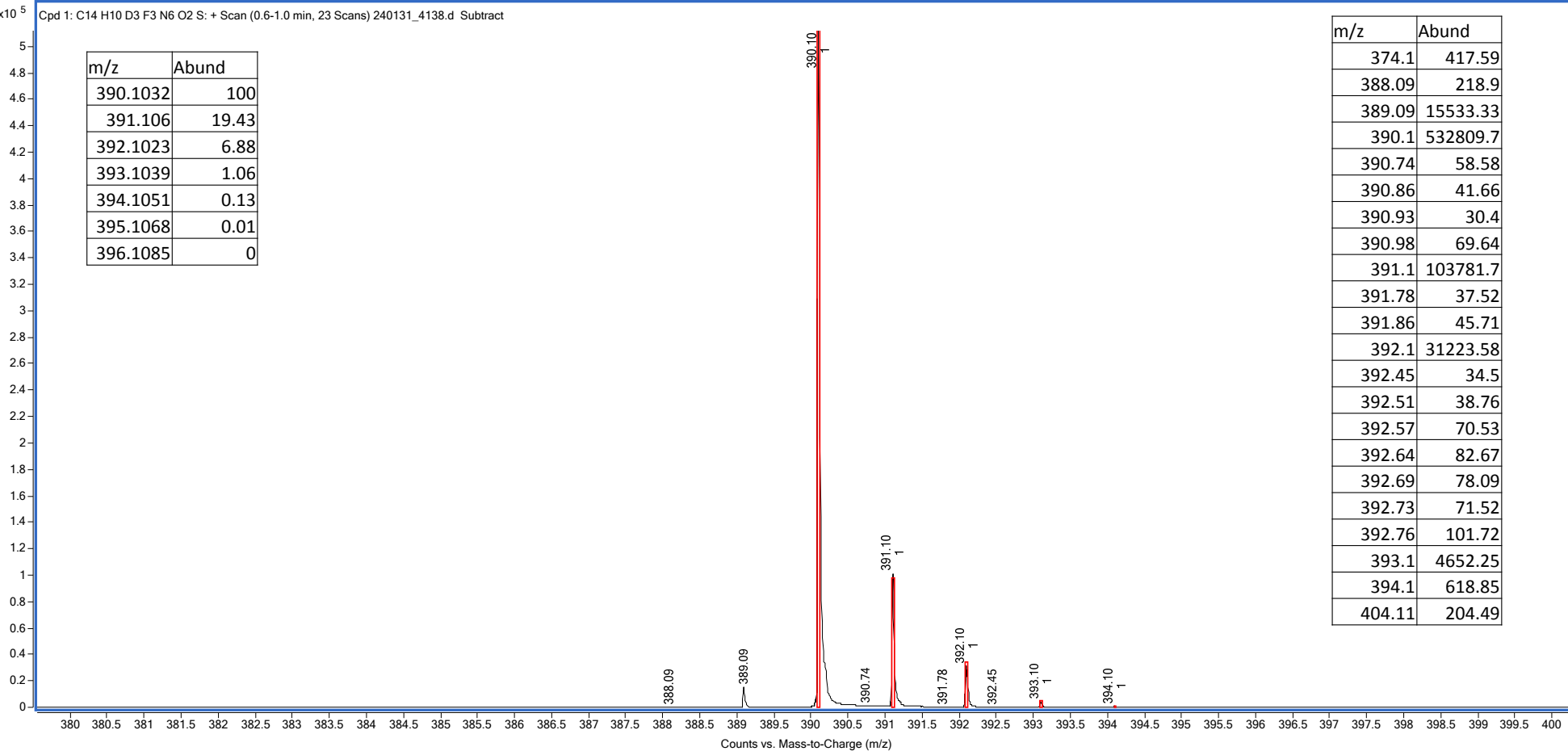


### Predicted Isotope Match Table

Isotope	m/z	Calc m/z	Diff (mDa)	Abund (%)	Calc Abund (%)	+/-
1	390.1027	390.1034	-0.7	100.0	100.0	0.0
2	391.1045	391.1058	-1.3	19.5	18.3	-1.2
3	392.1014	392.1019	-0.5	5.9	6.5	0.6
4	393.1016	393.1032	-1.6	0.9	0.9	0.0
5	394.1018	394.1044	-2.6	0.1	0.1	0.0

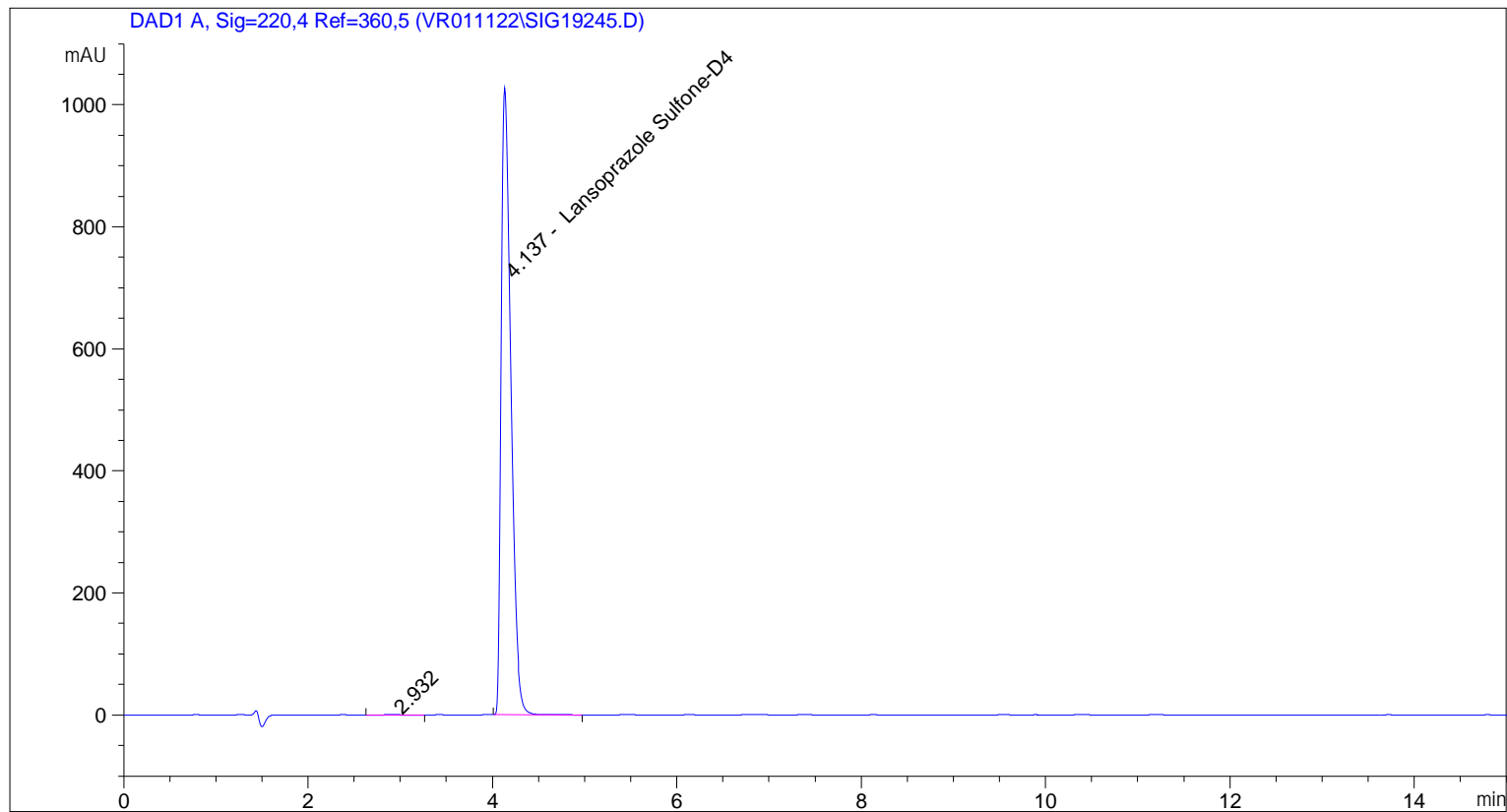
x10<sup>5</sup> Cpd 1: C14 H10 D3 F3 N6 O2 S: + Scan (0.6-1.0 min, 23 Scans) 240131\_4138.d Subtract

m/z	Abund
390.1032	100
391.106	19.43
392.1023	6.88
393.1039	1.06
394.1051	0.13
395.1068	0.01
396.1085	0



m/z	Abund
374.1	417.59
388.09	218.9
389.09	15533.33
390.1	532809.7
390.74	58.58
390.86	41.66
390.93	30.4
390.98	69.64
391.1	103781.7
391.78	37.52
391.86	45.71
392.1	31223.58
392.45	34.5
392.51	38.76
392.57	70.53
392.64	82.67
392.69	78.09
392.73	71.52
392.76	101.72
393.1	4652.25
394.1	618.85
404.11	204.49

=====  
Acq. Operator : vrusu  
Acq. Instrument : Instrument 1 Location : Vial 97  
Injection Date : 1/14/2022 1:37:27 PM Inj Volume : 5.0 µl  
Acq. Method : C:\CHEM32\1\METHODS\VR011422\_083.M  
Last changed : 1/14/2022 1:36:30 PM by vrusu  
Analysis Method : C:\CHEM32\1\METHODS\VR011422\_083PM.M  
Last changed : 1/14/2022 2:31:00 PM by vrusu



=====  
Area Percent Report  
=====

Sorted By : Signal  
Calib. Data Modified : 1/14/2022 2:30:17 PM  
Multiplier: : 1.0000  
Dilution: : 1.0000  
Use Multiplier & Dilution Factor with ISTDs

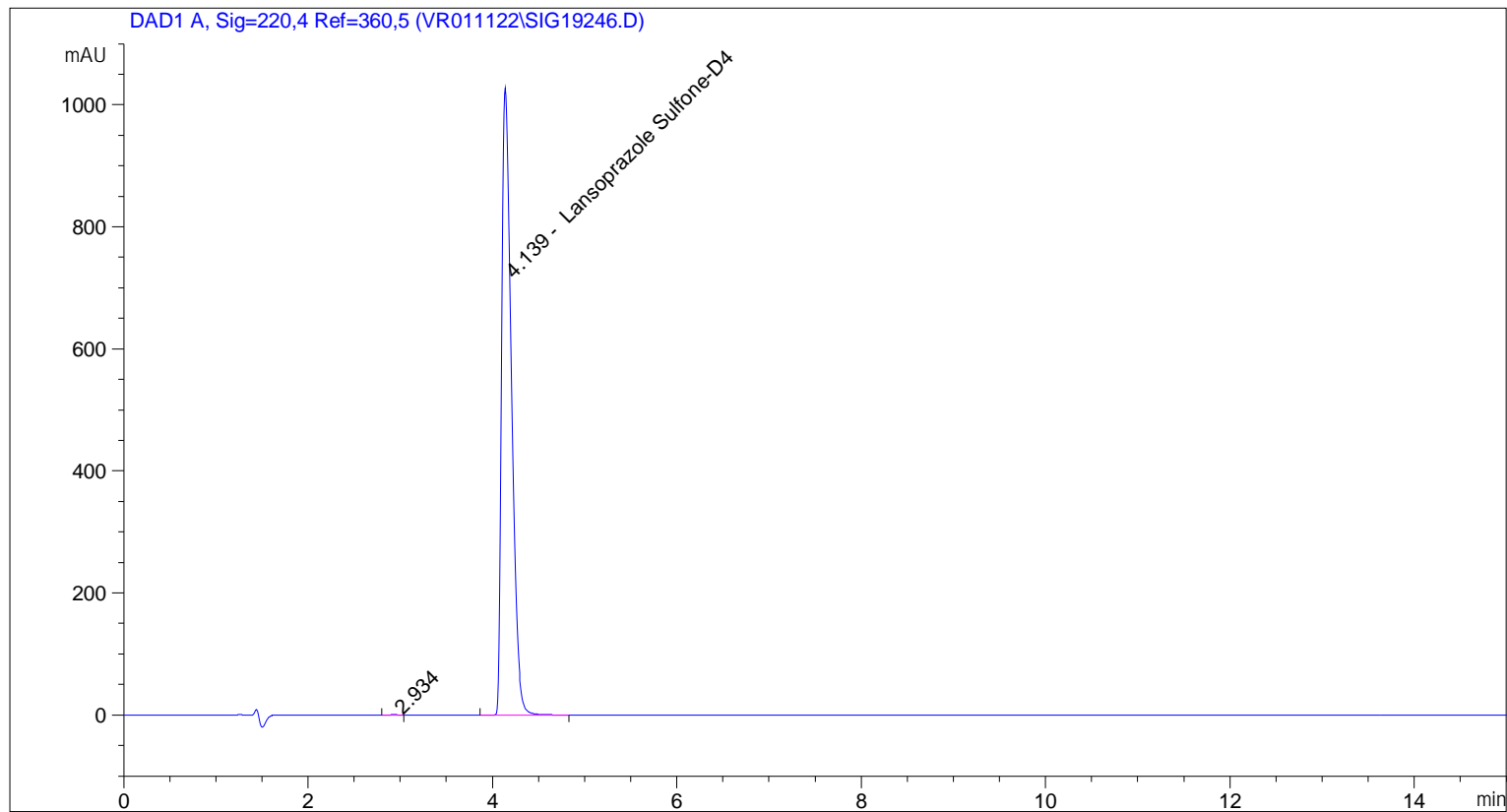
Signal 1: DAD1 A, Sig=220,4 Ref=360,5

Peak #	RetTime [min]	Type	Width [min]	Area [mAU*s]	Area %	Name
1	2.932	BB	0.1160	8.73795	0.1177	?
2	4.137	BB	0.1122	7414.08057	99.8823	Lansoprazole Sulfone-D4

Totals : 7422.81851

=====  
\*\*\* End of Report \*\*\*

=====  
Acq. Operator : vrusu  
Acq. Instrument : Instrument 1 Location : Vial 98  
Injection Date : 1/14/2022 1:55:09 PM Inj Volume : 5.0 µl  
Acq. Method : C:\CHEM32\1\METHODS\VR011422\_083.M  
Last changed : 1/14/2022 1:54:09 PM by vrusu  
Analysis Method : C:\CHEM32\1\METHODS\VR011422\_083PM.M  
Last changed : 1/14/2022 2:31:00 PM by vrusu



=====  
Area Percent Report  
=====

Sorted By : Signal  
Calib. Data Modified : 1/14/2022 2:30:17 PM  
Multiplier: : 1.0000  
Dilution: : 1.0000  
Use Multiplier & Dilution Factor with ISTDs

Signal 1: DAD1 A, Sig=220,4 Ref=360,5

Peak #	RetTime [min]	Type	Width [min]	Area [mAU*s]	Area %	Name
1	2.934	BB	0.0740	2.95277	0.0397	?
2	4.139	BB	0.1125	7439.14990	99.9603	Lansoprazole Sulfone-D4

Totals : 7442.10267

=====  
\*\*\* End of Report \*\*\*