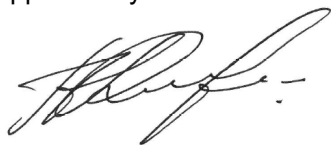


Name: 6-Keto Cortisone-21-Acetate
Lot#: GR-17-007
Test Date: 02/08/2022 (re-test date: 02/08/2027)
CAS No.: 96369-98-1
MF: C₂₃H₂₈O₇
MW: 416.46
Appearance: Off-white solid
Purity: 98.1% by HPLC (average of two sample preparations)
¹H-NMR: Conforms
MS-ESI (+) Conforms (shows peak at m/z = 417.17 [M+H]⁺)
Storage Long term store at 0 - 5° C in a dry place away from direct sunlight

Approved by:

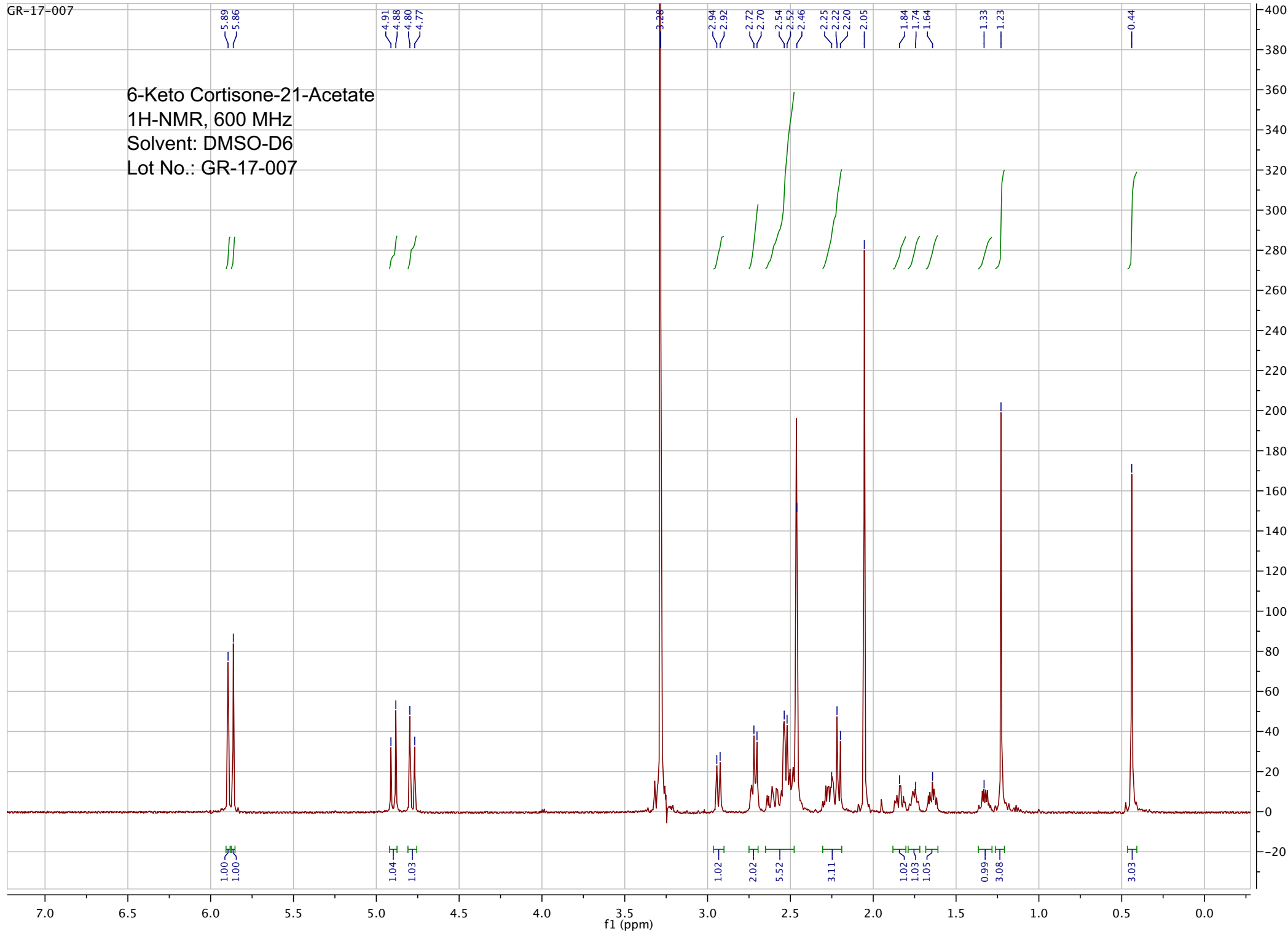
Date: 02/15/2022



Viorica Rusu, QC/QA Manager

GR-17-007

6-Keto Cortisone-21-Acetate
1H-NMR, 600 MHz
Solvent: DMSO-D6
Lot No.: GR-17-007



15-Feb-2022, 15:25:53

TOF MS ES+
3.04e3

PP_2022_012_GR_17_007_1 442 (8.343) Sm (SG, 2x5.00); Sb (2,10.00); Cm ((442+463+468+499)-130:138)

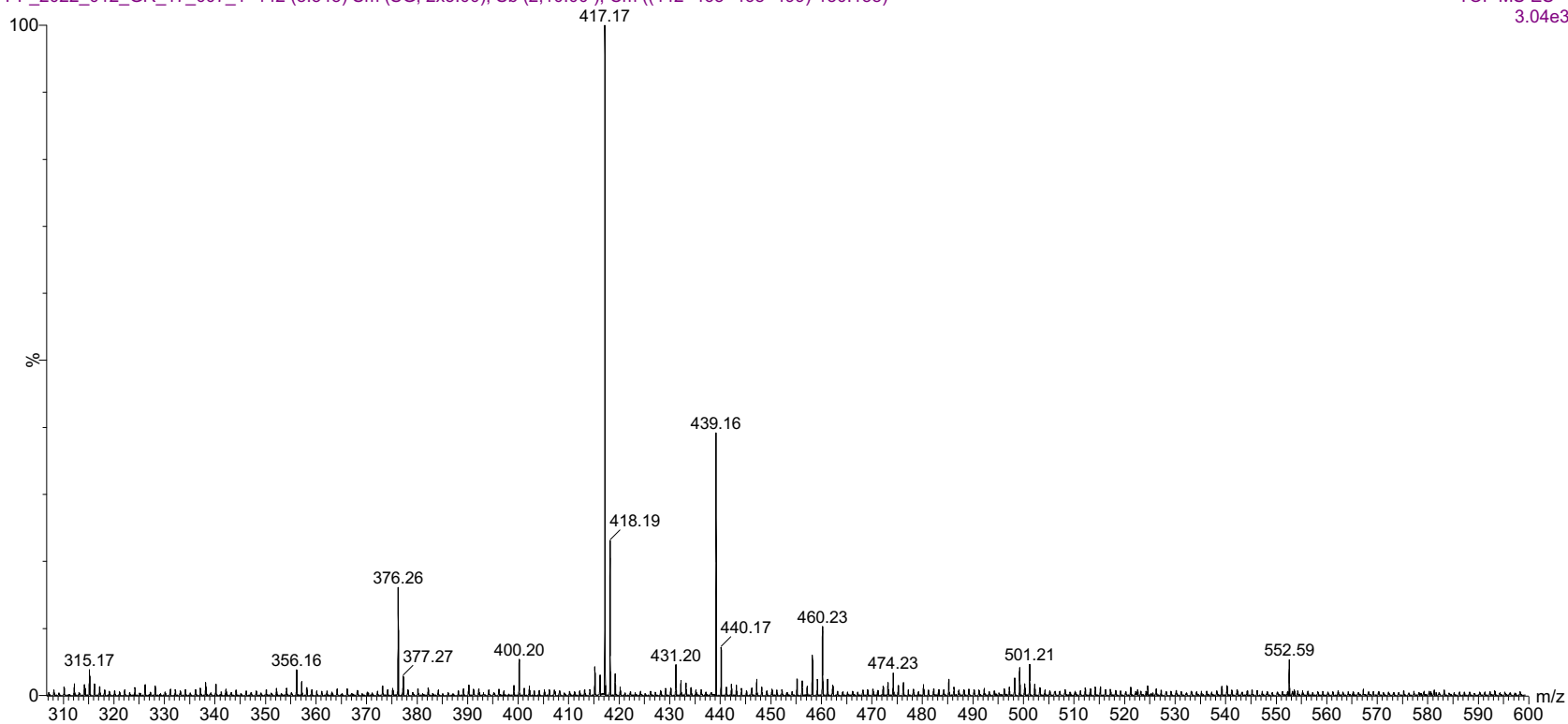
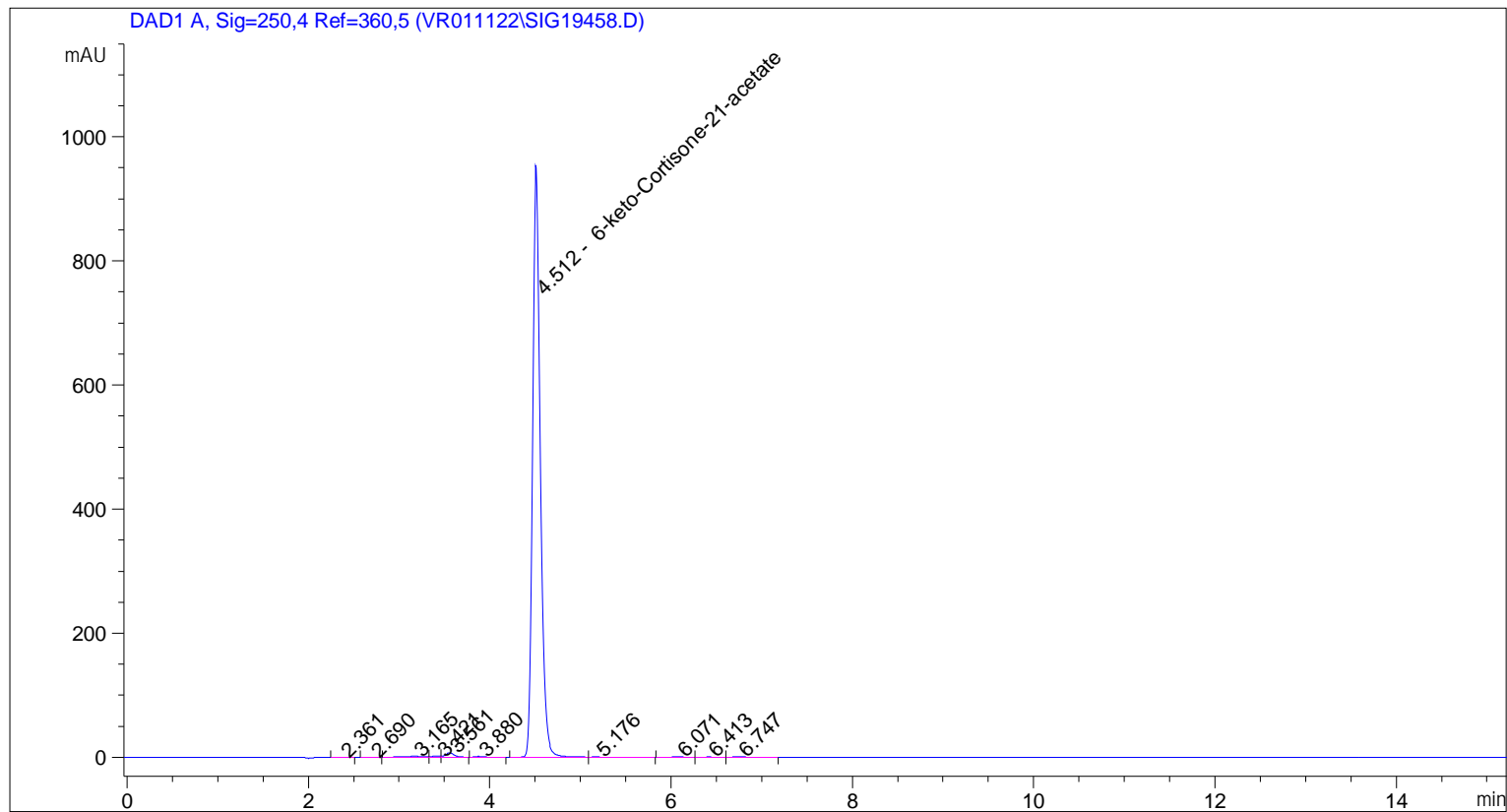


Figure 1 Raw ESI-MS spectrum for sample GR-17-007. Shows monoisotopic [M+H]⁺ mass.

```

=====
Acq. Operator   : vrusu
Acq. Instrument : Instrument 1                Location : Vial 82
Injection Date  : 2/8/2022 9:31:45 AM
                                           Inj Volume : 10.0 µl
Acq. Method     : C:\CHEM32\1\METHODS\VR020822_007.M
Last changed    : 2/8/2022 9:30:51 AM by vrusu
Analysis Method : C:\CHEM32\1\METHODS\VR020822_007PM.M
Last changed    : 2/8/2022 12:36:07 PM by vrusu
  
```



Area Percent Report

```

Sorted By           : Signal
Calib. Data Modified : 2/8/2022 12:34:36 PM
Multiplier:         : 1.0000
Dilution:           : 1.0000
Use Multiplier & Dilution Factor with ISTDs
  
```

Signal 1: DAD1 A, Sig=250,4 Ref=360,5

Peak #	RetTime [min]	Type	Width [min]	Area [mAU*s]	Area %	Name
1	2.361	BB	0.0803	1.29786	0.0220	?
2	2.690	BB	0.1168	1.71814	0.0292	?
3	3.165	BV	0.1612	21.96375	0.3727	?
4	3.421	VV	0.0908	11.80598	0.2003	?
5	3.561	VB	0.0975	46.25166	0.7848	?
6	3.880	BB	0.1076	8.47931	0.1439	?
7	4.512	BV	0.0945	5775.27783	97.9908	6-keto-Cortisone-21-acetate
8	5.176	VB	0.1698	5.35736	0.0909	?

Sample Name: GR-17-007

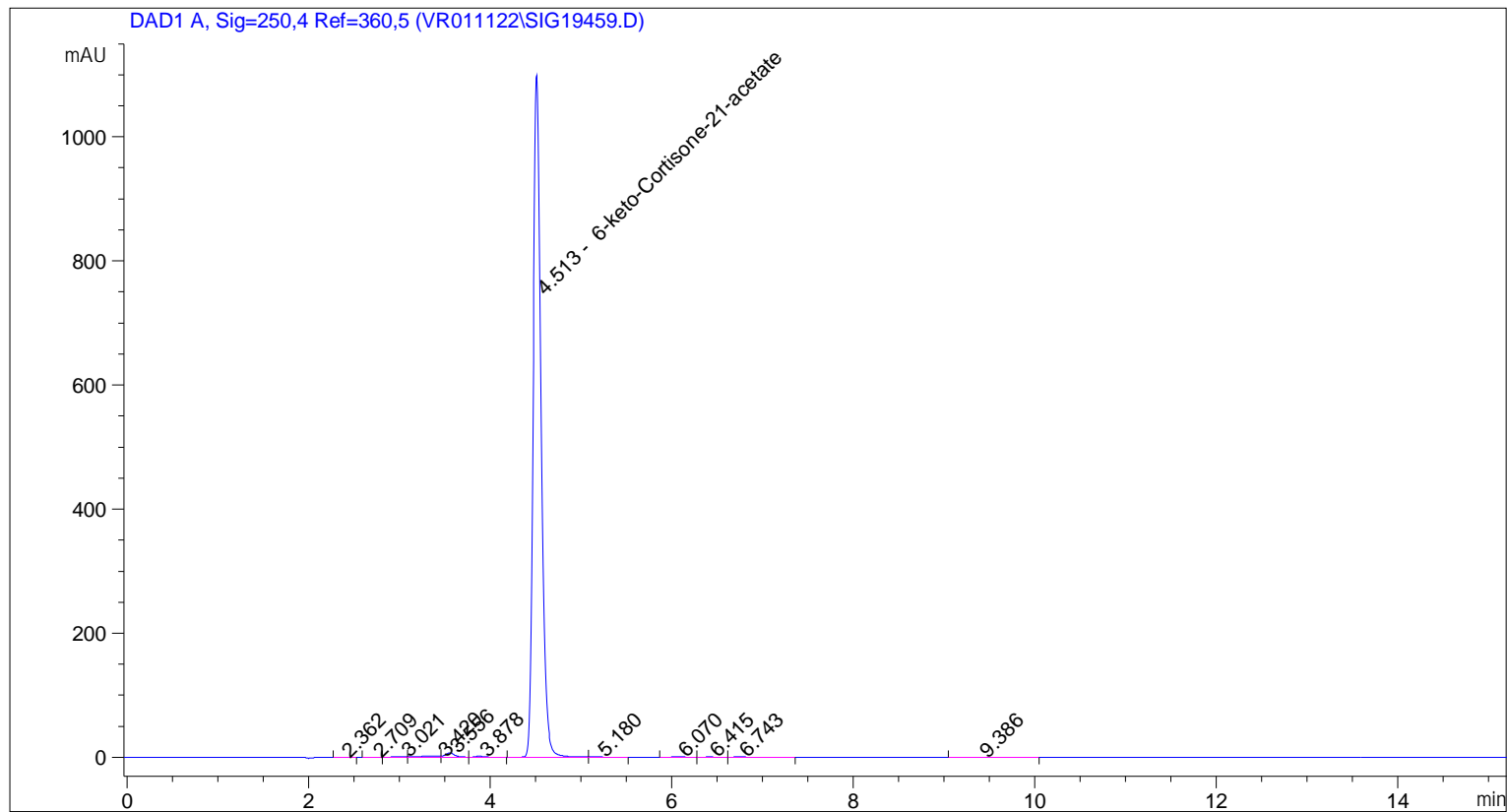
Peak #	RetTime [min]	Type	Width [min]	Area [mAU*s]	Area %	Name
9	6.071	BV	0.1221	7.22665	0.1226	?
10	6.413	VV	0.1441	4.42102	0.0750	?
11	6.747	VB	0.1367	9.89306	0.1679	?

Totals : 5893.69262

=====
*** End of Report ***

```

=====
Acq. Operator   : vrusu
Acq. Instrument : Instrument 1                Location : Vial 83
Injection Date  : 2/8/2022 9:48:48 AM
                                           Inj Volume : 10.0 µl
Acq. Method     : C:\CHEM32\1\METHODS\VR020822_007.M
Last changed    : 2/8/2022 9:47:47 AM by vrusu
Analysis Method : C:\CHEM32\1\METHODS\VR020822_007PM.M
Last changed    : 2/8/2022 12:36:07 PM by vrusu
  
```



Area Percent Report

```

Sorted By           : Signal
Calib. Data Modified : 2/8/2022 12:34:36 PM
Multiplier:         : 1.0000
Dilution:           : 1.0000
Use Multiplier & Dilution Factor with ISTDs
  
```

Signal 1: DAD1 A, Sig=250,4 Ref=360,5

Peak #	RetTime [min]	Type	Width [min]	Area [mAU*s]	Area %	Name
1	2.362	BB	0.0737	1.66897	0.0246	?
2	2.709	BB	0.0831	1.15955	0.0171	?
3	3.021	BV	0.1312	5.40453	0.0797	?
4	3.420	VV	0.1589	26.44111	0.3899	?
5	3.556	VB	0.1031	46.92838	0.6919	?
6	3.878	BB	0.1096	10.30731	0.1520	?
7	4.513	BV	0.0946	6659.24268	98.1848	6-keto-Cortisone-21-acetate
8	5.180	VB	0.1298	5.84424	0.0862	?

Sample Name: GR-17-007 spl-2

Peak #	RetTime [min]	Type	Width [min]	Area [mAU*s]	Area %	Name
9	6.070	BV	0.1249	8.31664	0.1226	?
10	6.415	VV	0.1364	4.88867	0.0721	?
11	6.743	VB	0.1456	8.92108	0.1315	?
12	9.386	BB	0.2004	3.23555	0.0477	?

Totals : 6782.35870

=====
*** End of Report ***