

Name:	Fulvestrant-D5
Lot#:	GR-6-065
Test Date:	10/21/2024 (re-test date:10/21/2029)
CAS No.:	129453-61-8 (unlabeled)
MF:	C ₃₂ H ₄₂ D ₅ F ₅ O ₃ S
MW:	611.81
Appearance:	White Solid
Purity:	99.7% by HPLC; >98% atom D
¹H-NMR:	Conforms (shows a trace of MTBE)
MS-ESI (-)	Conforms (shows peaks at m/z = 610.33 [M-H] ⁻ and 656.34 [M+HCOOH-H] ⁻)
Storage	Store at -18°C in a dry place away from direct sunlight

Approved by:

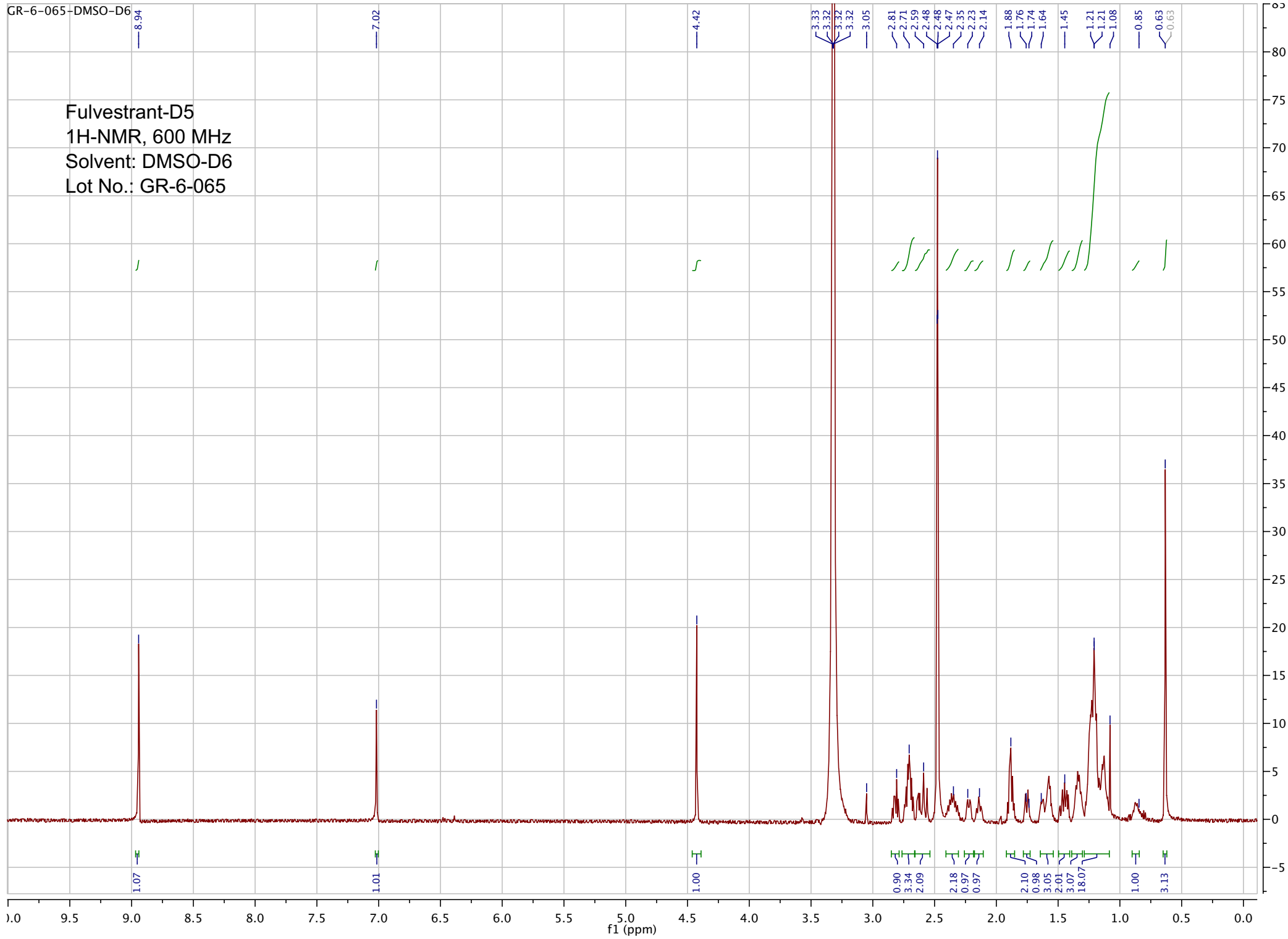
Date: 10/21/2024



Viorica Rusu, QC/QA Manager

GR-6-065-DMSO-D6

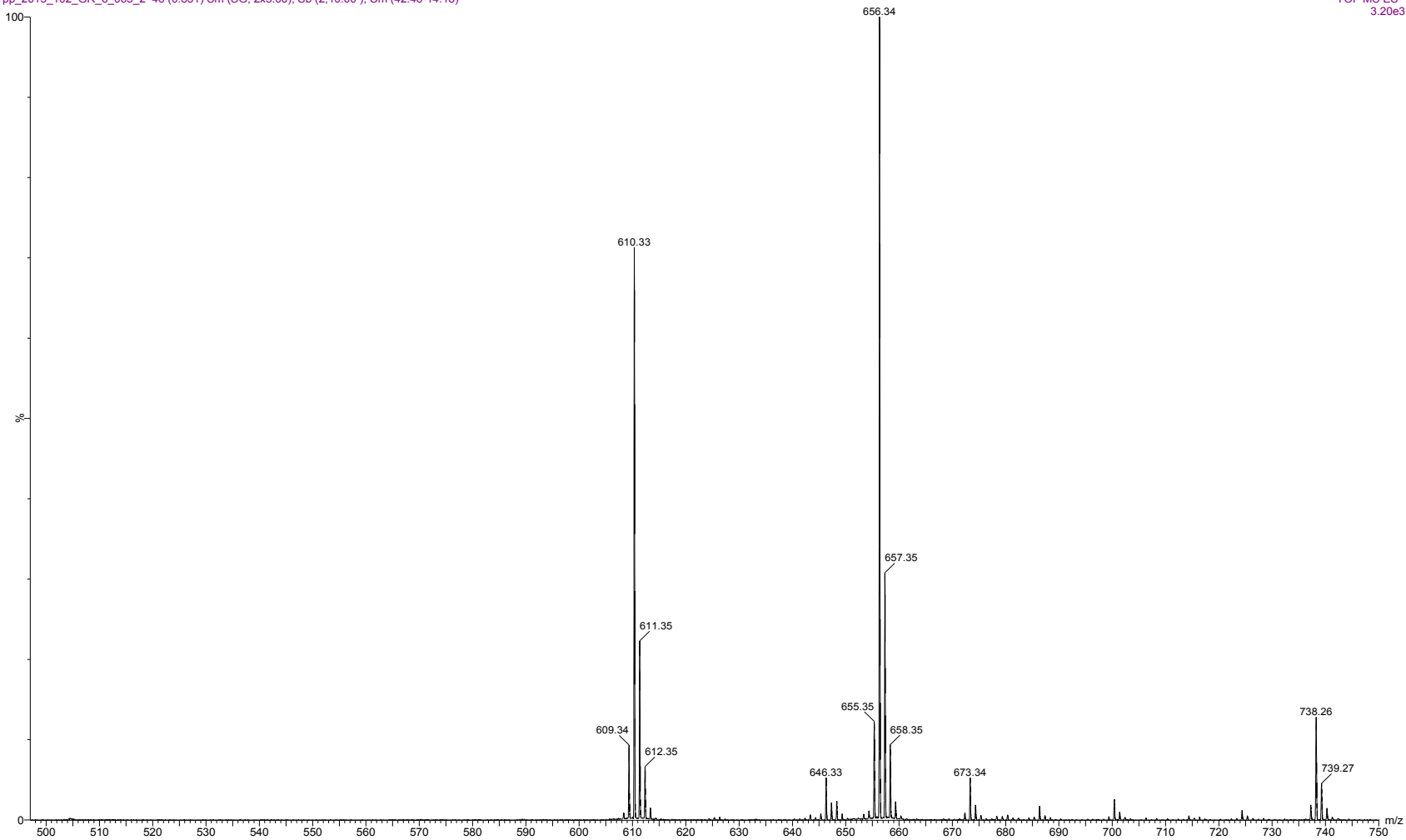
Fulvestrant-D5
1H-NMR, 600 MHz
Solvent: DMSO-D6
Lot No.: GR-6-065



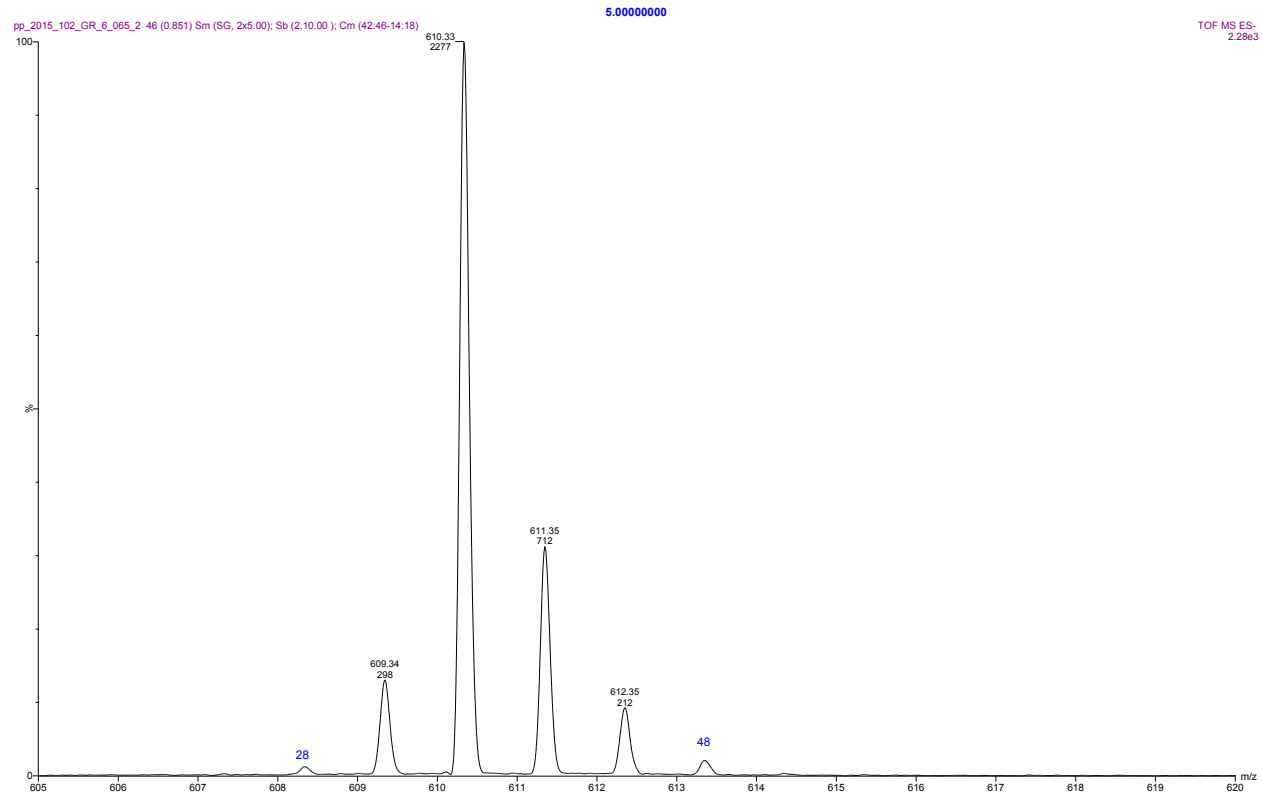
pp_2015_102_GR_6_065_2 46 (0.851) Sm (SG, 2x5.00); Sb (2,10.00); Cm (42:46-14:18)

5.00000000

TOF MS ES-
3.20e3



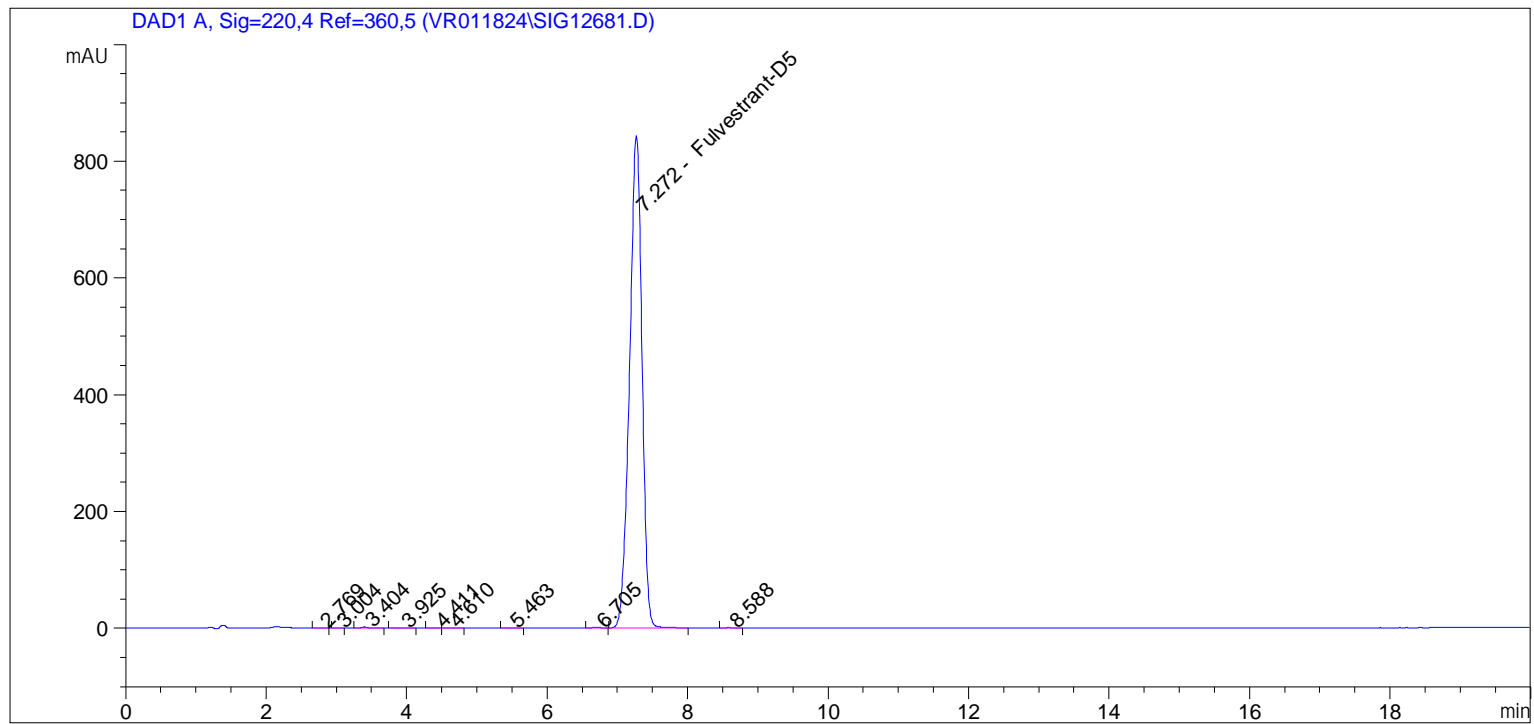
ESI-MS spectrum for sample GR-6-065. Shows monoisotopic [M-H]⁻ mass.



Expansion of above.

```

=====
Acq. Operator   : vrusu
Acq. Instrument : Instrument 1                Location : Vial 62
Injection Date  : 10/21/2024 10:38:46 AM
                                           Inj Volume : 15.0 µl
Acq. Method    : C:\CHEM32\1\METHODS\VR102124_065.M
Last changed   : 10/21/2024 10:37:26 AM by vrusu
Analysis Method: C:\CHEM32\1\METHODS\VR102124_065PM.M
Last changed   : 10/21/2024 2:15:26 PM by vrusu
  
```



Area Percent Report

```

Sorted By           :      Signal
Calib. Data Modified :      10/21/2024 2:14:53 PM
Multiplier          :      1.603e3
Dilution            :      1.0000
Use Multiplier & Dilution Factor with ISTDs
  
```

Signal 1: DAD1 A, Sig=220,4 Ref=360,5

Peak #	RetTime [min]	Type	Width [min]	Area [mAU*s]	Area %	Name
1	2.769	BB	0.0682	1.73340	0.0167	?
2	3.004	BB	0.0605	6.04248e-1	5.834e-3	?
3	3.404	BB	0.0843	9.57518	0.0925	?
4	3.925	BB	0.1249	3.47385	0.0335	?
5	4.411	BV	0.1023	1.76775	0.0171	?
6	4.610	VB	0.1245	4.46718	0.0431	?
7	5.463	BB	0.1302	2.12215	0.0205	?
8	6.705	BB	0.1135	4.50487	0.0435	?
9	7.272	BB	0.1848	1.03265e4	99.7050	Fulvestrant-D5
10	8.588	BV	0.1099	2.30287	0.0222	?

Sample Name: GR-6-065

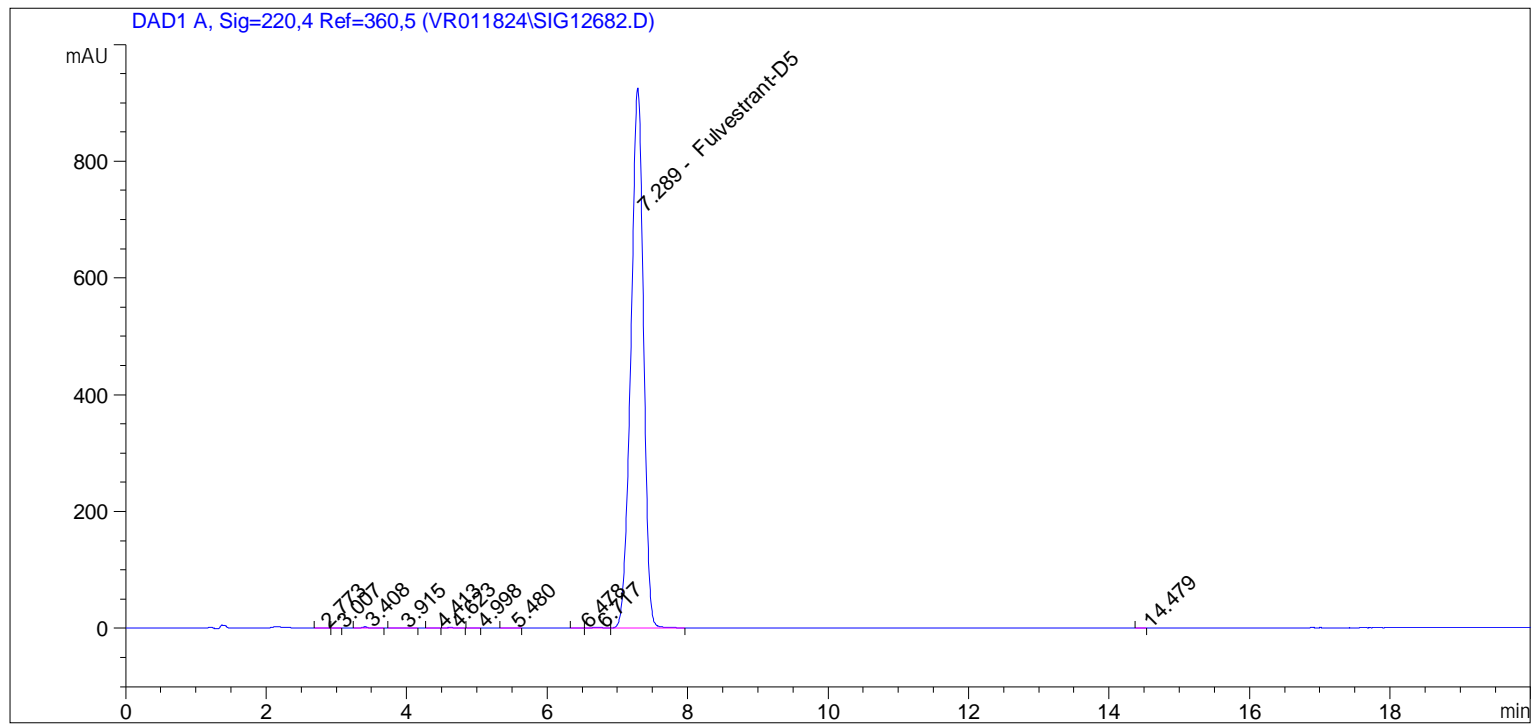
Totals : 1.03571e4

=====

*** End of Report ***

```

=====
Acq. Operator   : vrusu
Acq. Instrument : Instrument 1                Location : Vial 63
Injection Date  : 10/21/2024 11:00:42 AM
                                           Inj Volume : 15.0 µl
Acq. Method    : C:\CHEM32\1\METHODS\VR102124_065.M
Last changed   : 10/21/2024 10:59:24 AM by vrusu
Analysis Method: C:\CHEM32\1\METHODS\VR102124_065PM.M
Last changed   : 10/21/2024 2:15:26 PM by vrusu
  
```



=====
 Area Percent Report
 =====

```

Sorted By           :      Signal
Calib. Data Modified :      10/21/2024 2:14:53 PM
Multiplier:         :      1.603e3
Dilution:           :      1.0000
Use Multiplier & Dilution Factor with ISTDs
  
```

Signal 1: DAD1 A, Sig=220,4 Ref=360,5

Peak #	RetTime [min]	Type	Width [min]	Area [mAU*s]	Area %	Name
1	2.773	BB	0.0939	2.05379	0.0178	?
2	3.007	BB	0.0765	5.39017e-1	4.675e-3	?
3	3.408	BB	0.0870	10.69611	0.0928	?
4	3.915	BB	0.1153	4.10709	0.0356	?
5	4.413	BB	0.0874	9.10997e-1	7.902e-3	?
6	4.623	BB	0.1165	5.23796	0.0454	?
7	4.998	BB	0.1020	9.52911e-1	8.265e-3	?
8	5.480	BB	0.1217	2.53820	0.0220	?
9	6.478	BV	0.0971	2.29741	0.0199	?
10	6.717	VB	0.1711	8.65870	0.0751	?
11	7.289	BB	0.1889	1.14904e4	99.6652	Fulvestrant-D5

Sample Name: GR-6-065 spl-2

Peak #	RetTime [min]	Type	Width [min]	Area [mAU*s]	Area %	Name
12	14.479	BB	0.0928	6.01959e-1	5.221e-3	?

Totals : 1.15290e4

=====
*** End of Report ***