

<b>Name:</b>	<b>Losartan Acid-D4</b>
<b>Lot#:</b>	GR-13-167
<b>Test Date:</b>	12/04/2024 (re-test date: 12/04/2029)
<b>CAS No.:</b>	1246820-62-1
<b>MF:</b>	C <sub>22</sub> H <sub>17</sub> D <sub>4</sub> ClN <sub>6</sub> O <sub>2</sub>
<b>MW:</b>	440.92
<b>Appearance:</b>	Off-White Solid
<b>Purity:</b>	96.7% by HPLC (average of two sample preparations); >98% atom D
<b><sup>1</sup>H-NMR:</b>	Conforms
<b>MS-ESI (+)</b>	Conforms (shows peaks at m/z = 441.17, 443.17 [M+H] <sup>+</sup> ; exhibits the expected isotope pattern for mono-chloro compounds)
<b>Storage</b>	Store at -18°C in a dry place away from direct sunlight

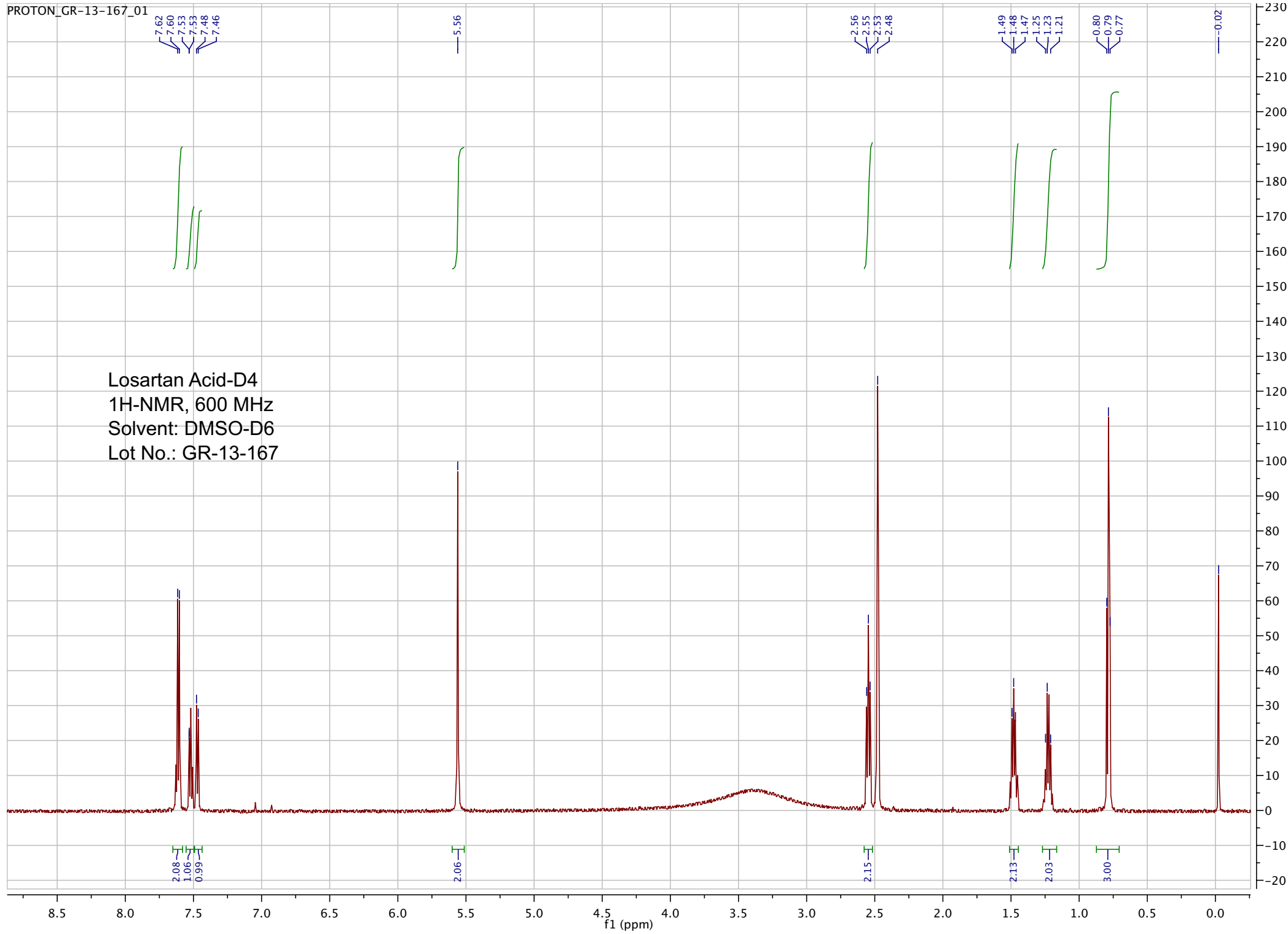
Approved by:

Date: 12/04/2024



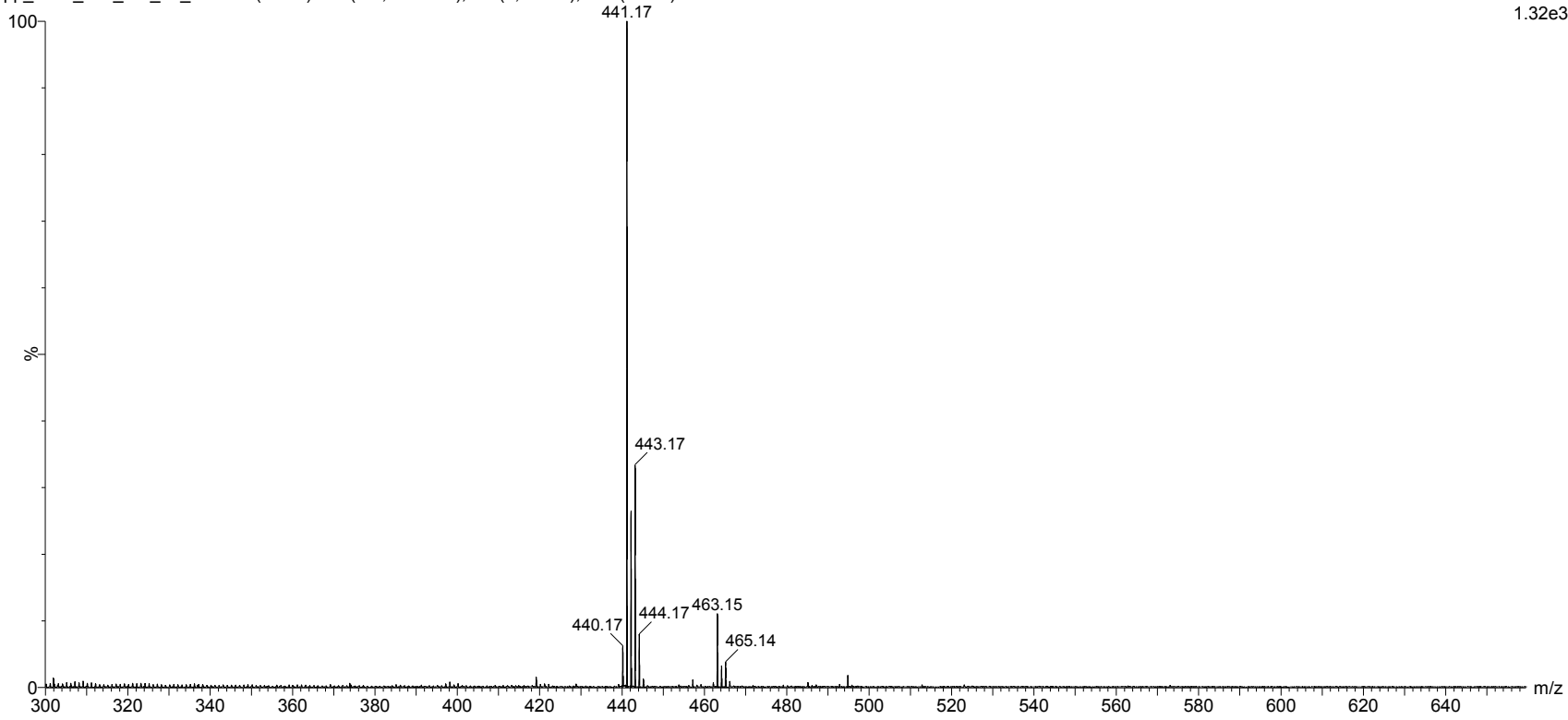
Viorica Rusu, QC/QA Manager

Losartan Acid-D4  
1H-NMR, 600 MHz  
Solvent: DMSO-D6  
Lot No.: GR-13-167



pp\_2019\_076\_GR\_13\_167 69 (1.310) Sm (SG, 2x10.00); Sb (2,10.00 ); Cm (69:77)

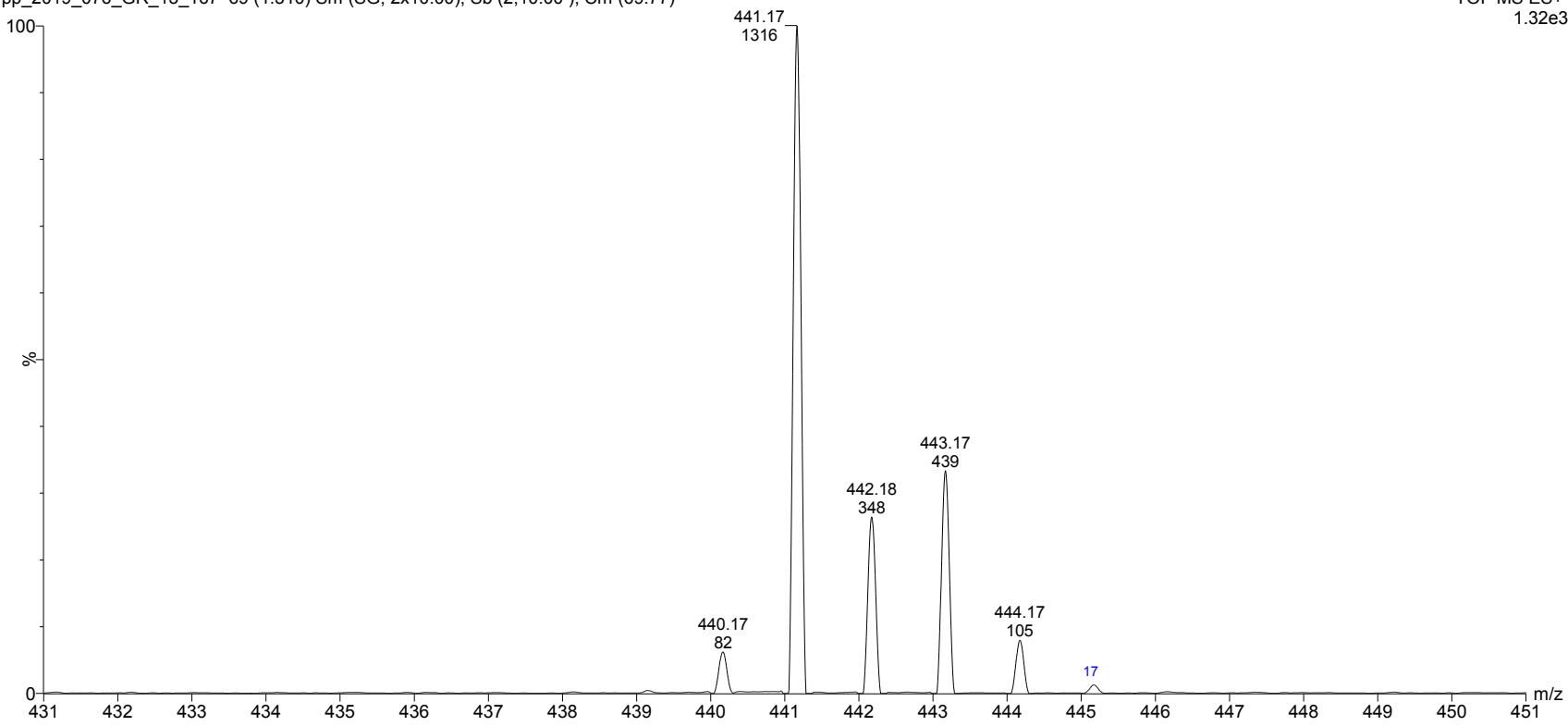
TOF MS ES+  
1.32e3



ESI-MS spectrum for sample GR-13-167. Shows monoisotopic [M+H]<sup>+</sup> mass.

pp\_2019\_076\_GR\_13\_167 69 (1.310) Sm (SG, 2x10.00); Sb (2,10.00 ); Cm (69:77)

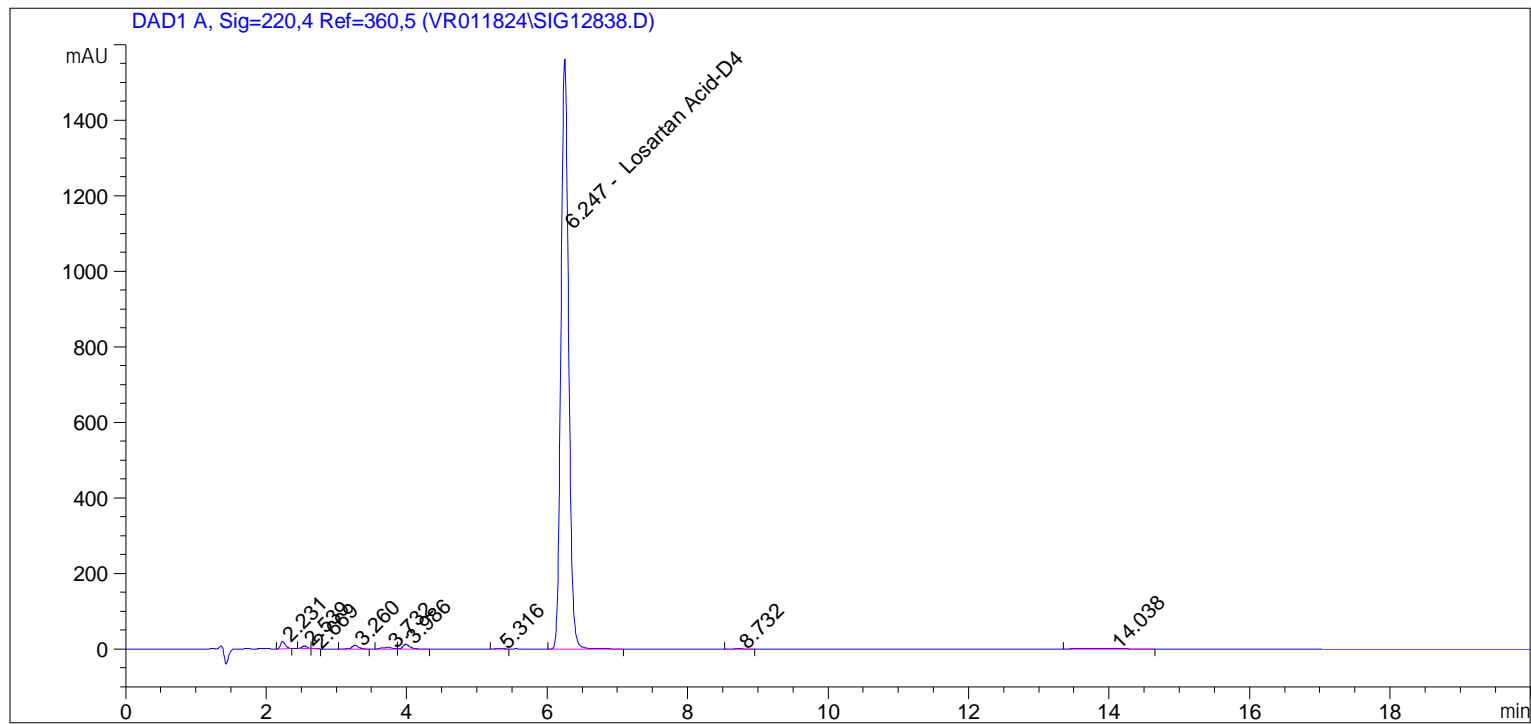
TOF MS ES+  
1.32e3



Expansion of above showing intensity.

```

=====
Acq. Operator   :
Acq. Instrument : Instrument 1                Location : Vial 66
Injection Date  : 12/4/2024 3:36:10 PM
                                           Inj Volume : 10.0 µl
Acq. Method     : C:\CHEM32\1\METHODS\VR120424_167.M
Last changed    : 12/4/2024 3:35:04 PM
Analysis Method : C:\CHEM32\1\METHODS\VR120424_167PM.M
Last changed    : 12/4/2024 4:03:38 PM by vrusu
  
```



Area Percent Report

```

=====
Sorted By           :      Signal
Calib. Data Modified :      12/4/2024 4:00:28 PM
Multiplier:         :      1.603e3
Dilution:           :      1.0000
Use Multiplier & Dilution Factor with ISTDs
  
```

Signal 1: DAD1 A, Sig=220,4 Ref=360,5

Peak #	RetTime [min]	Type	Width [min]	Area [mAU*s]	Area %	Name
1	2.231	BB	0.0718	91.18296	0.7455	?
2	2.539	VV	0.0804	39.28071	0.3212	?
3	2.669	VB	0.0665	4.96509	0.0406	?
4	3.260	BB	0.0928	59.64718	0.4877	?
5	3.732	BV	0.1161	37.36338	0.3055	?
6	3.986	VB	0.1049	84.80716	0.6934	?
7	5.316	BB	0.1003	10.71911	0.0876	?
8	6.247	BB	0.1163	1.18237e4	96.6685	Losartan Acid-D4
9	8.732	BB	0.1701	8.82652	0.0722	?
10	14.038	BB	0.4256	70.68520	0.5779	?

Sample Name: GR-13-167 spl-2

Totals : 1.22312e4

=====

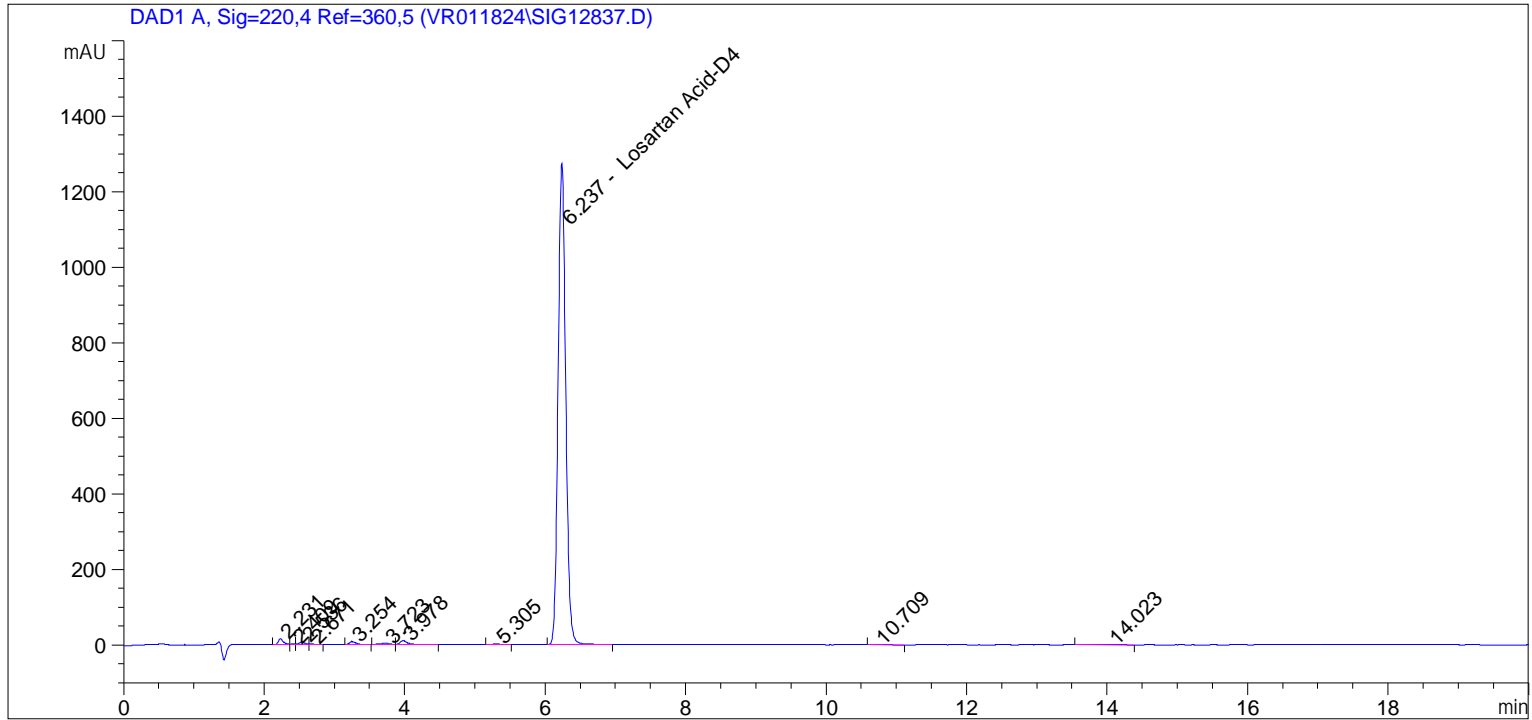
\*\*\* End of Report \*\*\*

Sample Name: GR-13-167

```

=====
Acq. Operator   :
Acq. Instrument : Instrument 1                Location : Vial 65
Injection Date  : 12/4/2024 3:14:02 PM
                                           Inj Volume : 10.0 µl
Acq. Method     : C:\CHEM32\1\METHODS\VR120424_167.M
Last changed    : 12/4/2024 3:12:58 PM
Analysis Method : C:\CHEM32\1\METHODS\VR120424_167PM.M
Last changed    : 12/4/2024 4:03:38 PM by vrusu
=====

```



```

=====
                          Area Percent Report
=====

```

```

Sorted By           :      Signal
Calib. Data Modified :      12/4/2024 4:00:28 PM
Multiplier:         :      1.603e3
Dilution:           :      1.0000
Use Multiplier & Dilution Factor with ISTDs

```

Signal 1: DAD1 A, Sig=220,4 Ref=360,5

Peak #	RetTime [min]	Type	Width [min]	Area [mAU*s]	Area %	Name
1	2.231	BV	0.0732	77.19537	0.7804	?
2	2.409	VV	0.0642	6.03222	0.0610	?
3	2.536	VV	0.0843	37.85715	0.3827	?
4	2.671	VB	0.0730	7.00446	0.0708	?
5	3.254	BB	0.0925	44.50836	0.4500	?
6	3.723	BV	0.1253	31.71719	0.3207	?
7	3.978	VB	0.1098	72.48238	0.7328	?
8	5.305	BB	0.1075	9.89408	0.1000	?
9	6.237	BB	0.1157	9566.27246	96.7130	Losartan Acid-D4
10	10.709	BB	0.1856	5.46603	0.0553	?
11	14.023	BB	0.3104	32.97205	0.3333	?

Sample Name: GR-13-167

Peak #	RetTime [min]	Type	Width [min]	Area [mAU*s]	Area %	Name
Totals :				9891.40176		

=====  
\*\*\* End of Report \*\*\*